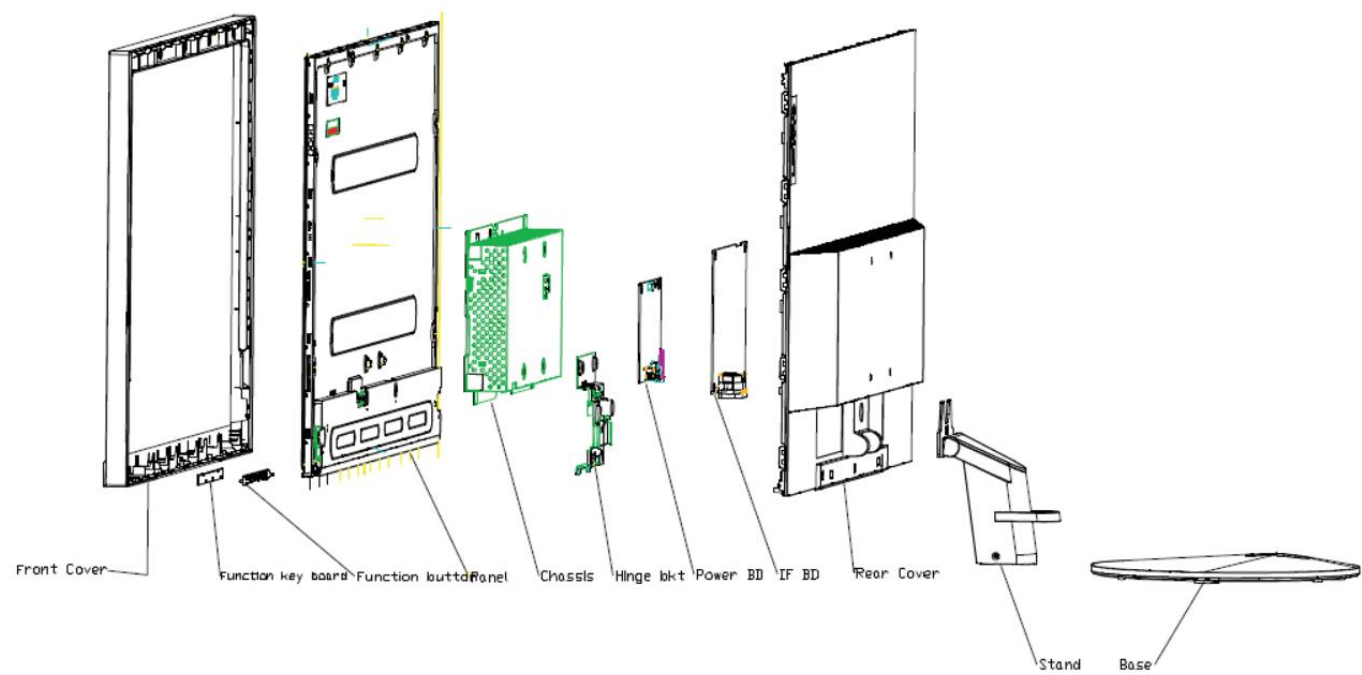


# S28u-10 Simplified service manual for dismantling

Model Name: Lenovo S28u-10

Exploded Diagram



## 1. Precaution




Please read the precaution as follows to prevent any damages to the LCD Monitor.

Make sure all power connector is removed. Be sure that the LCD Monitor is in power off status.


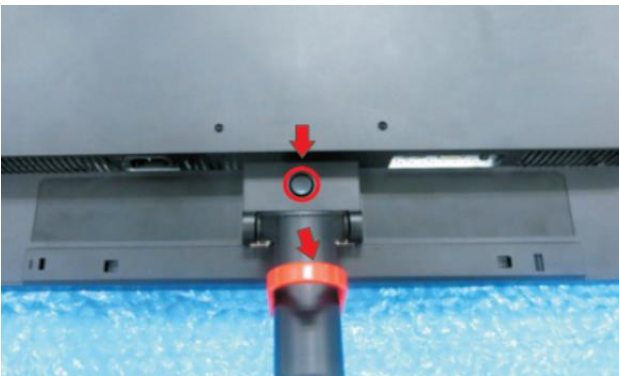

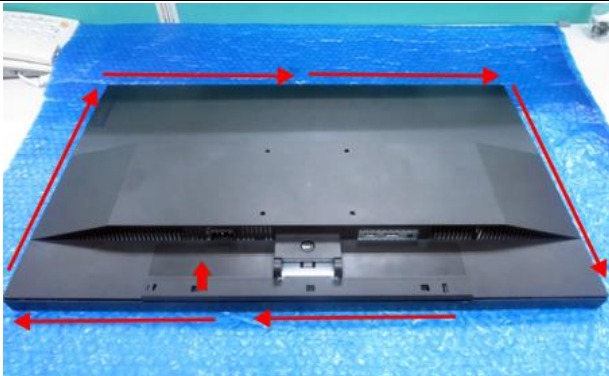
<p>Prepare soft cloth and sponge as working platform to place LCD monitor horizontally.</p>	
<p>Hold LCD by the side carefully and DON'T touch or press panel directly.</p>	

## 2. Appropriate tools

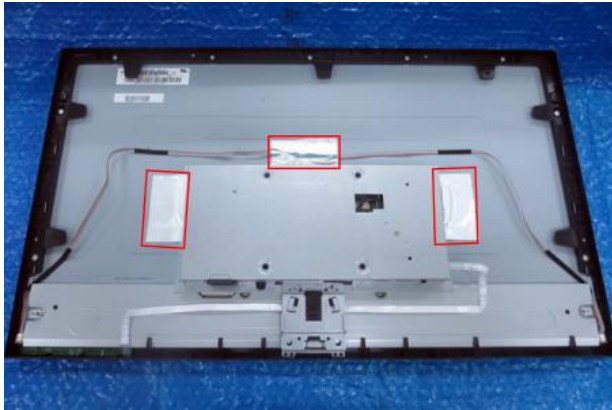
Select the Appropriate tools for disassembly and re-assembly.

Phillips screwdriver (#2)	
C/D disassembly tool	
Gloves or soft cloth	

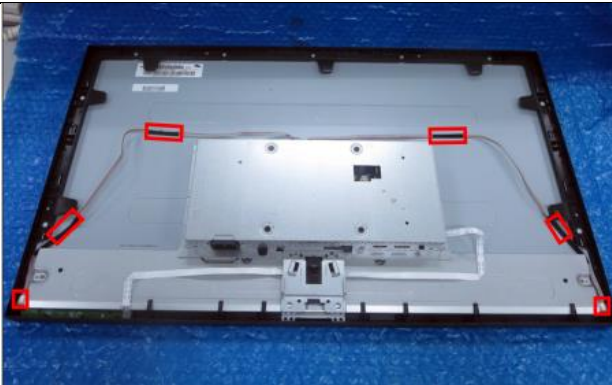
### 3. Disassembly SOP

<p>Put the monitor on a flat surface (Put the EPE on under the monitor)</p>	 A black monitor is shown from the back, resting on a blue bubble wrap surface. The stand base is visible at the bottom center.
<p>Depress the release button to pull out the stand base</p>	 A close-up view of the monitor's rear panel. A red circle highlights a small circular release button. A red arrow points down to the button, and another red arrow points down to the stand base below it.
<p>Use the C/D disassembly tool to release rear cover hook from disassemble hole on bottom</p>	 A close-up view of the bottom edge of the monitor's rear cover. A red square highlights a small rectangular hole. A red square also highlights a small rectangular hole on the bottom edge of the monitor's frame.
<p>Wedge fingers between the rear cover and the middle frame as the arrow direction shown for unlocking the mechanisms</p>	 A top-down view of the monitor's rear cover. Red arrows indicate the direction to wedge fingers between the rear cover and the middle frame. The arrows point outwards from the center towards the corners and edges.

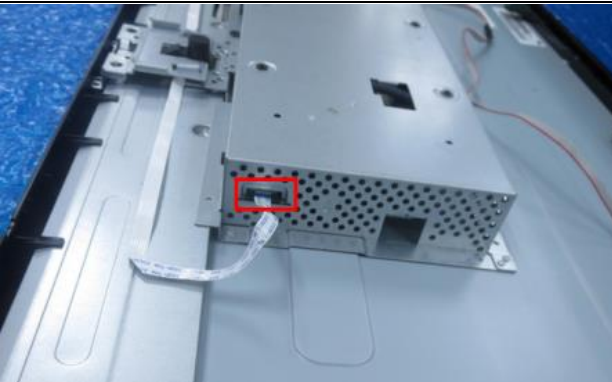
Remove all tape and foil



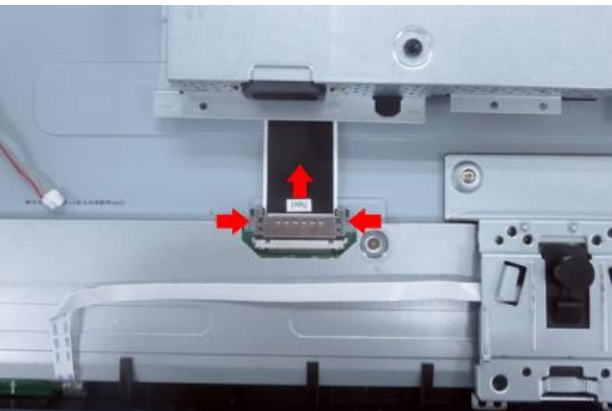
Disconnect lamp cable and remove it



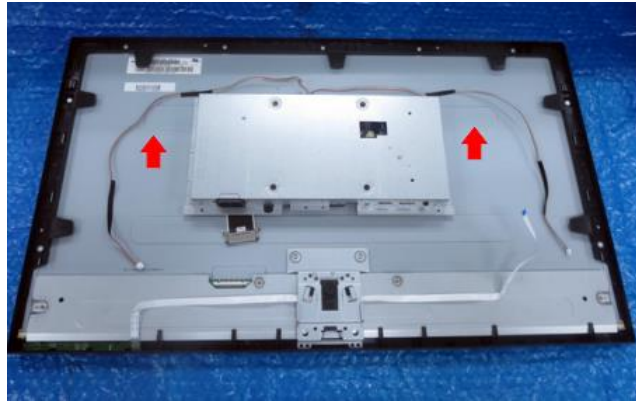
Unplug the keypad cable



Unplug LVDS wire



Lift up the main chassis and put it aside



Remove all screws for unlocking the middle frame and hinge.  
Tool : Screwdriver #2



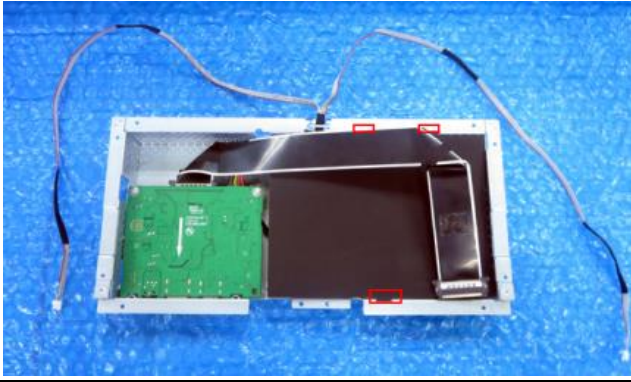
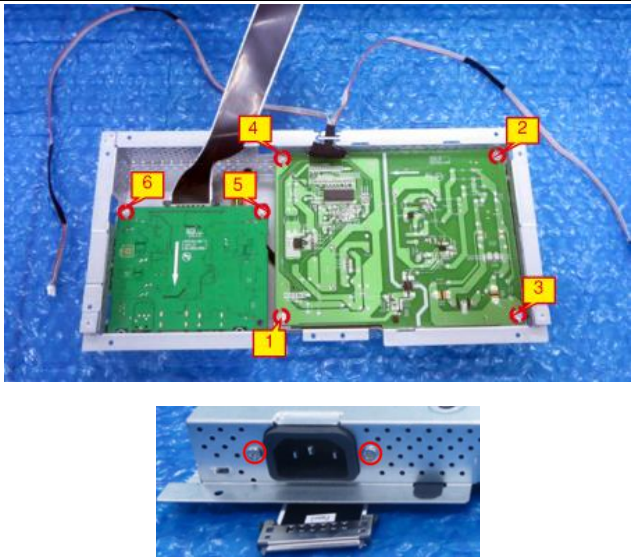
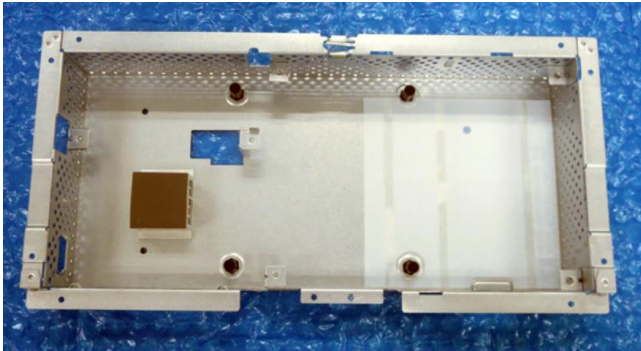
Release the middle frame from the panel



Release the keypad PCB from the middle frame





<p>Take out the mylar sheet from Main chassis</p>	
<p>Release the cables from hook of bracket. Remove 8(6+2)pcs screws. Tool : Screwdriver #2</p>	
<p>Take out PCB and peel off all mylar.</p>	
<p>Take out the thermal pads from power PCB</p>	