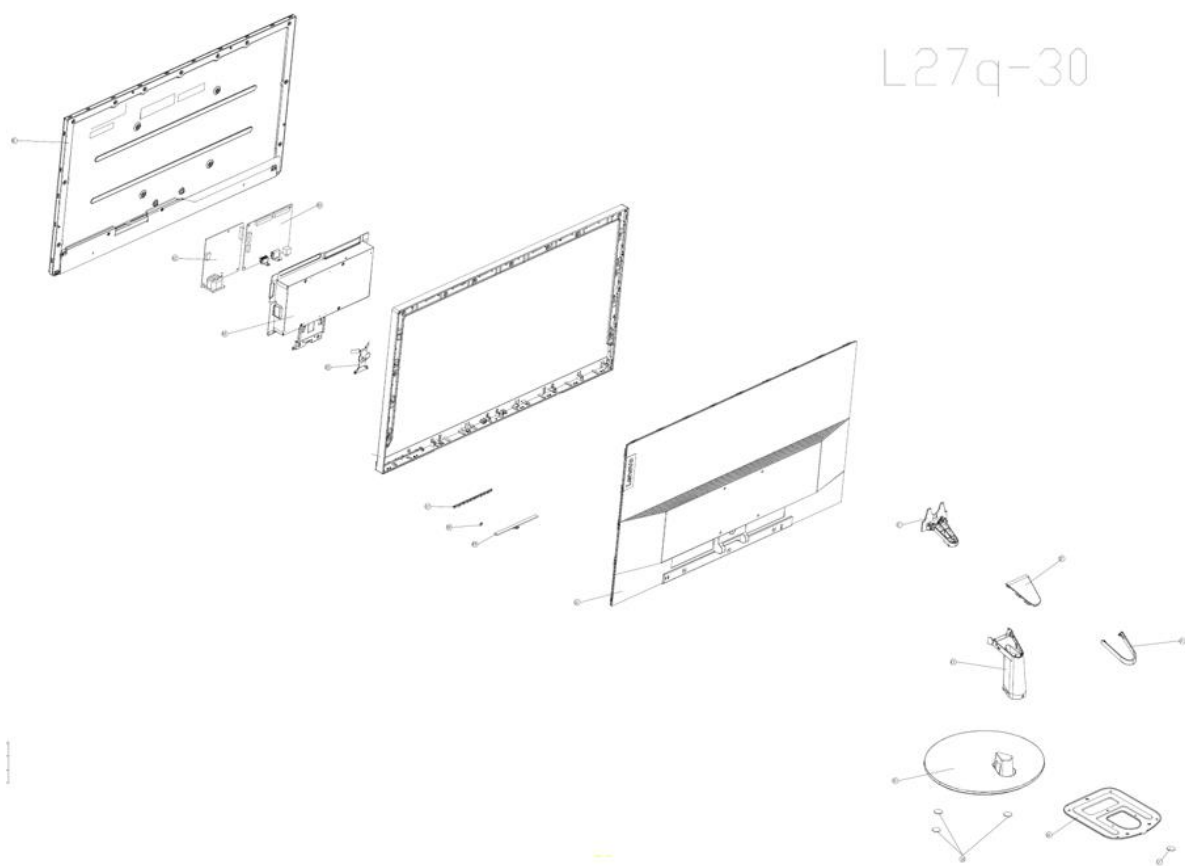


L27q-30 S27q-10 Simplified service manual for dismantling

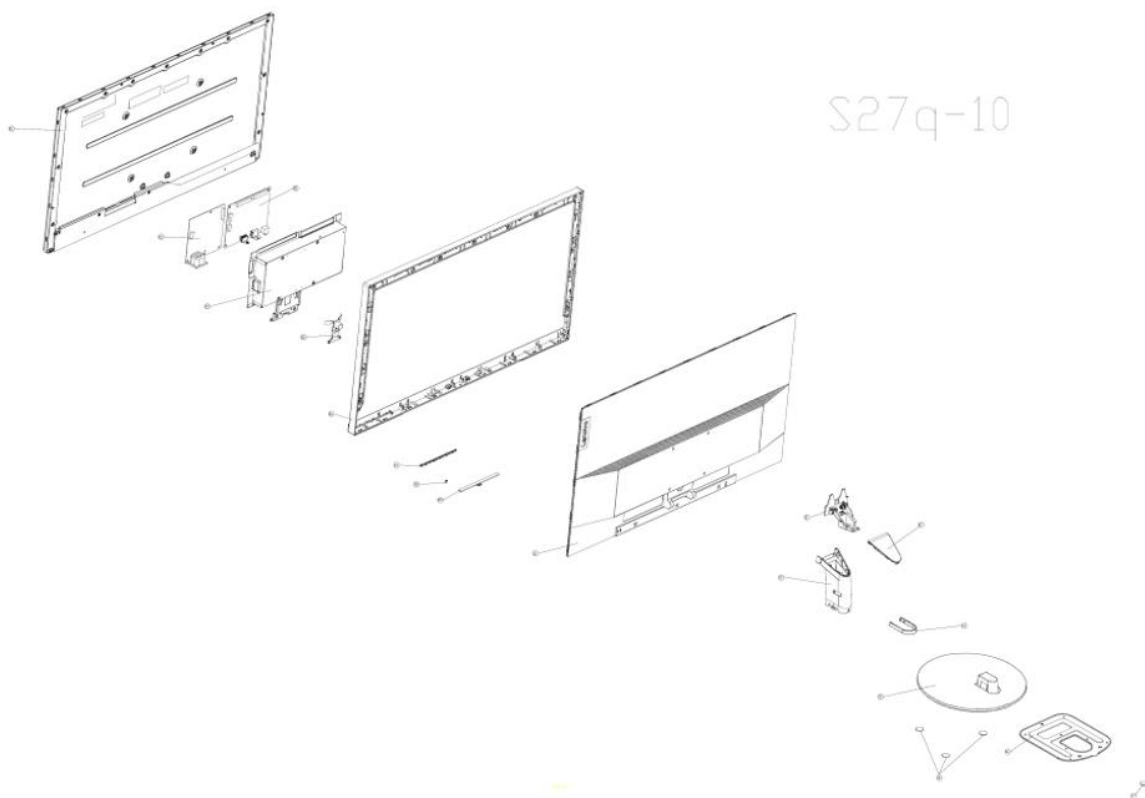
Model Name: Lenovo L27q-30 S27q-10

Exploded Diagram

L27q-30




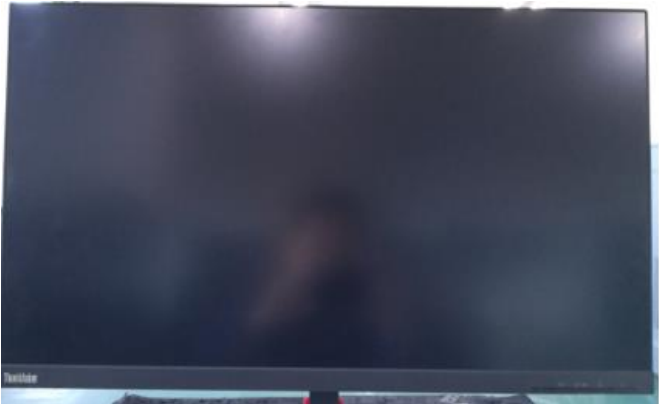
S27q-10



1. Precaution


Please read the precaution as follows to prevent any damages to the LCD Monitor.

Make sure all power connector is removed. Be sure that the LCD Monitor is in power off status.


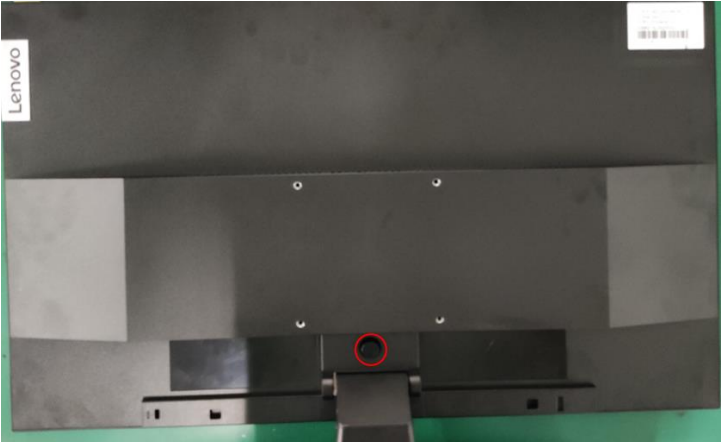


<p>Prepare soft cloth and sponge as working platform to place LCD monitor horizontally.</p>	
<p>Hold LCD by the side carefully and DON'T touch or press panel directly.</p>	

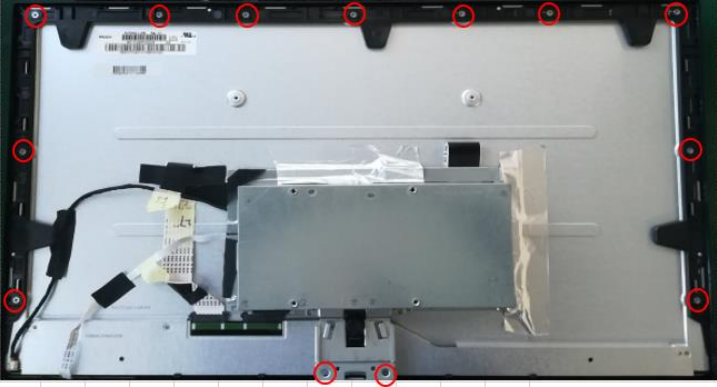
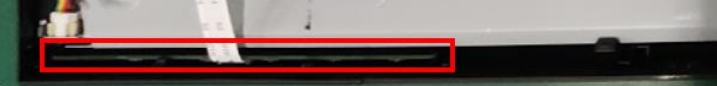

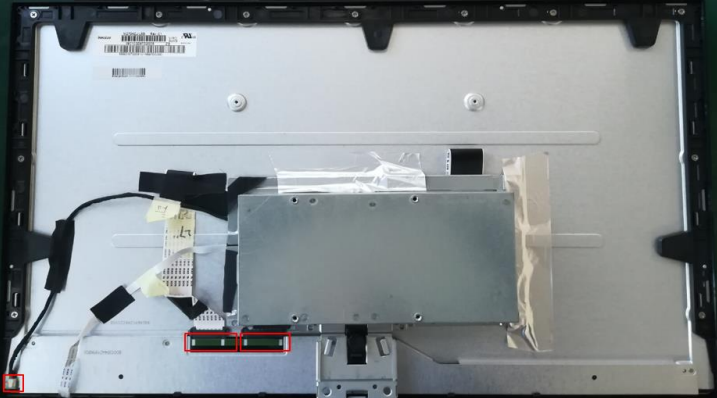
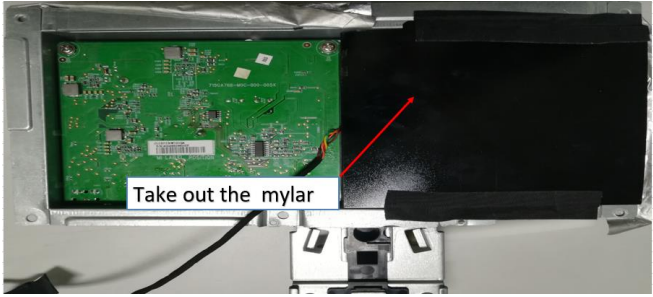
2. Appropriate tools

Select the Appropriate tools for disassembly and re-assembly.

Phillips screwdriver (#2)	
spacer screwdriver	
C/D disassembly tool	
Gloves or soft cloth	

3. Disassembly SOP

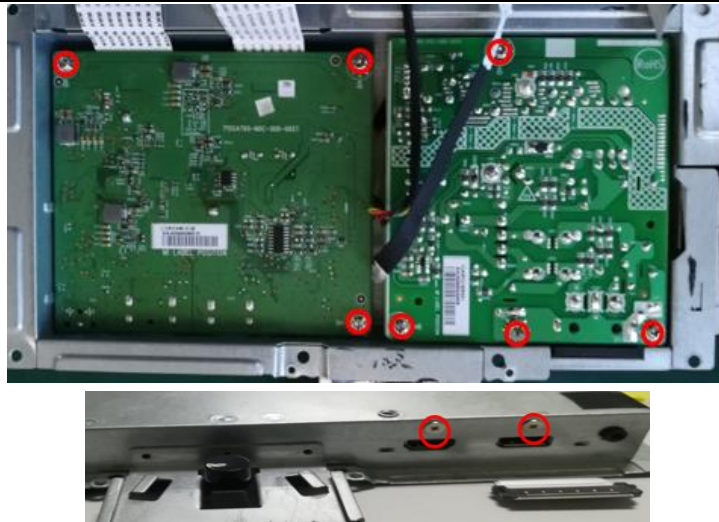
<p>Put the monitor on a flat surface (Put the EPE on under the monitor)</p>	 A photograph showing the back of a black monitor. A red circle is drawn around a small circular feature on the bottom center of the monitor's bezel. A "Lenovo" label is visible on the left side.
<p>Press the button and pull out stand</p>	 A photograph showing the back of a black monitor. A red circle is drawn around a small circular feature on the bottom center of the monitor's bezel. A "Lenovo" label is visible on the left side.
<p>Use the C/D disassembly tool to release Rear cover hook from disassemble hole on bottom</p>	 Two photographs. The left one shows the back of a monitor with a red circle on the bottom bezel. The right one is a close-up of a "Disassemble-hole" with a red circle around it. A label "Disassemble-hole" is placed below the close-up image.
<p>Remove All tape and foil</p>	 A photograph showing the front of a monitor. The screen is white, and the bezel is black. There is a large piece of white tape and a piece of yellow tape on the bezel. A "Lenovo" label is visible on the left side.

<p>Remove All screw.</p> <p>Tool : Screwdriver #2</p>	
<p>Release the middle frame from the Panel</p> <p>Release the keypad pcb from the the middle frame</p>	 
<p>Unplug light bar line and LVDS line</p>	
<p>Take out the mylar sheet from Main chassis</p>	 <p>Take out the mylar</p>

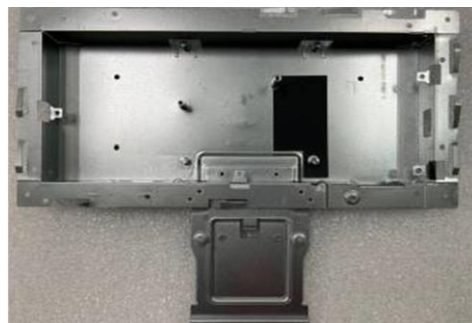
Remove All screw.

Tool : Screwdriver #2

Tool : spacer screwdriver



Take out PCB and Peel off all mylar.



Take out the Thermal pads from Power pcb

