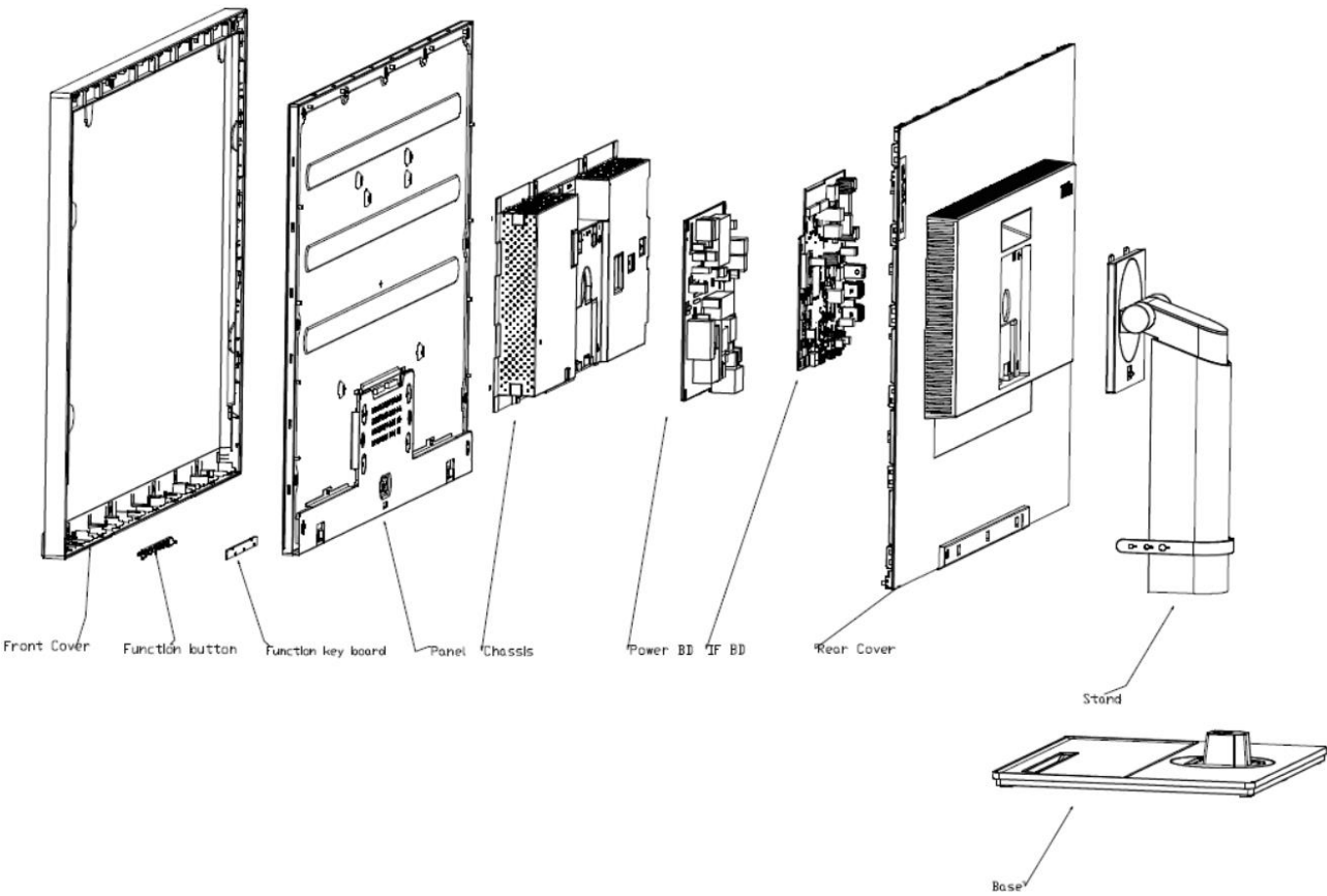


T32h-20 Simplified service manual for dismantling

Model Name: Lenovo T32h-20



Exploded Diagram



1. Precaution




Please read the precaution as follows to prevent any damages to the LCD Monitor.

Make sure all power connector is removed. Be sure that the LCD Monitor is in power off status.


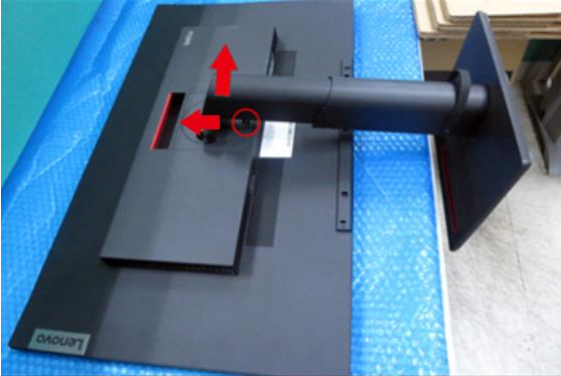

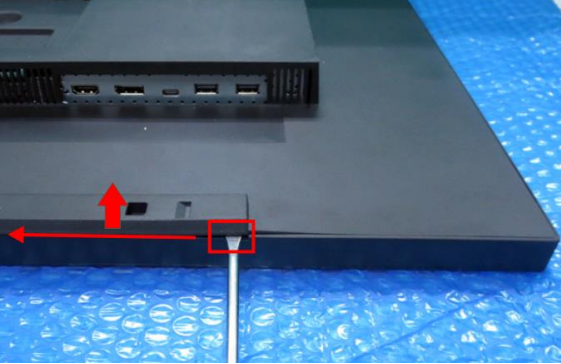
<p>Prepare soft cloth and sponge as working platform to place LCD monitor horizontally.</p>	
<p>Hold LCD by the side carefully and DON'T touch or press panel directly.</p>	

2. Appropriate tools

Select the Appropriate tools for disassembly and re-assembly.

Phillips screwdriver (#2)	
C/D disassembly tool	
Gloves or soft cloth	

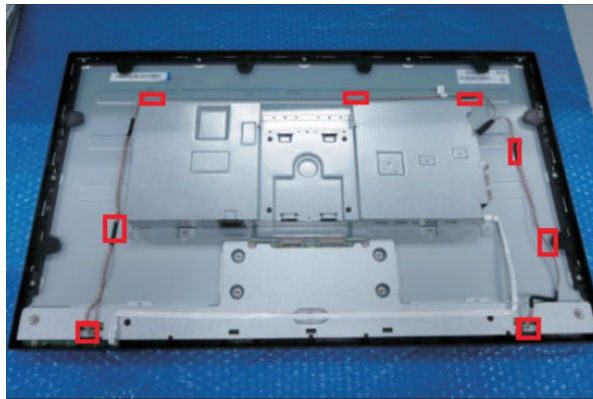
3. Disassembly SOP

<p>Put the monitor on a flat surface (Put the EPE on under the monitor)</p>	
<p>Depress the release button to remove the stand base</p>	
<p>Remove the screw * 4pcs Tool : Screwdriver #2</p>	
<p>Use the C/D disassembly tool to release Rear cover hook from disassemble hole on bottom</p>	

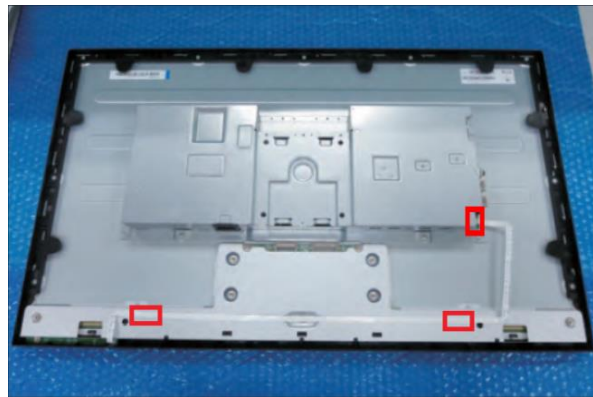
Wedge your fingers between the rear cover and the middle frame on the corners of the top side of the monitor to release the rear cover
Tool: Gloves



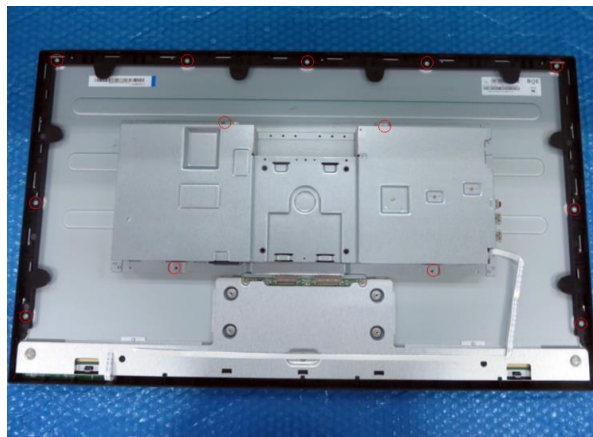
Tear off all tapes and unplug the panel lamp cable



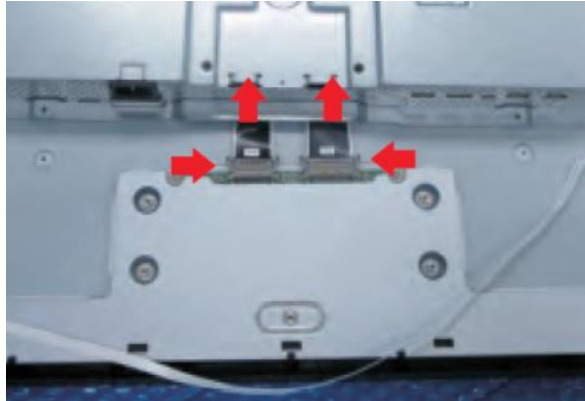
Unplug OSD key cable and tear off the tape for releasing the cable



Remove all screw.
Tool : Screwdriver #2



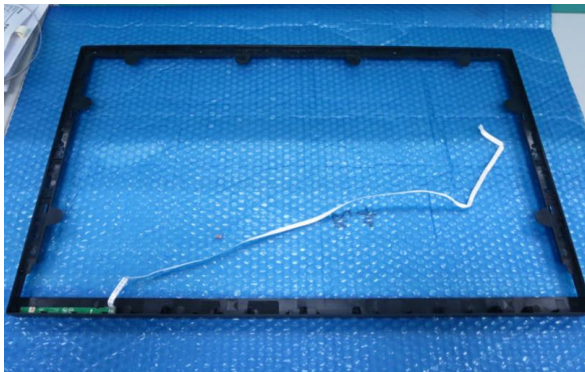
Unplug two LVDS cable from the panel, remove the main chassis



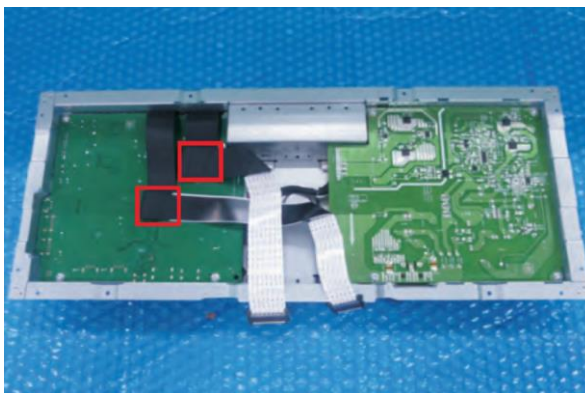
Tear off key cable for releasing the middle frame with panel



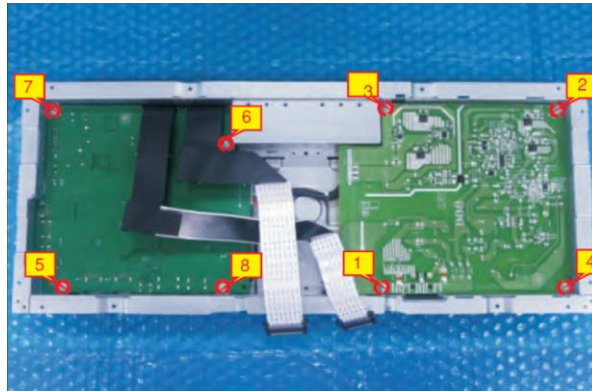
Release the keypad board from the middle frame



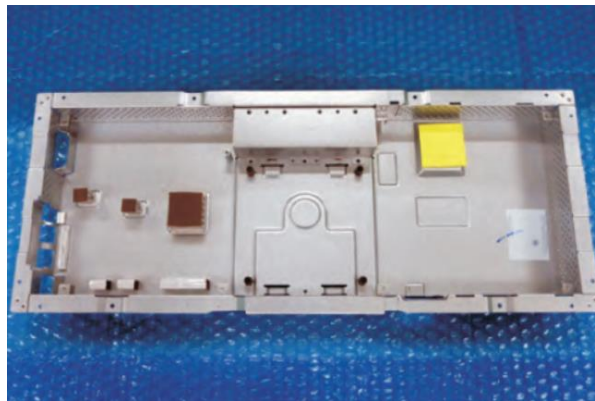
Tear off tape on the back of the LVDS cables



Remove 8pcs screws.
Tool : Screwdriver #2



Take out PCB and peel off all
mylar.



Take out the Thermal pads from
Power PCB

