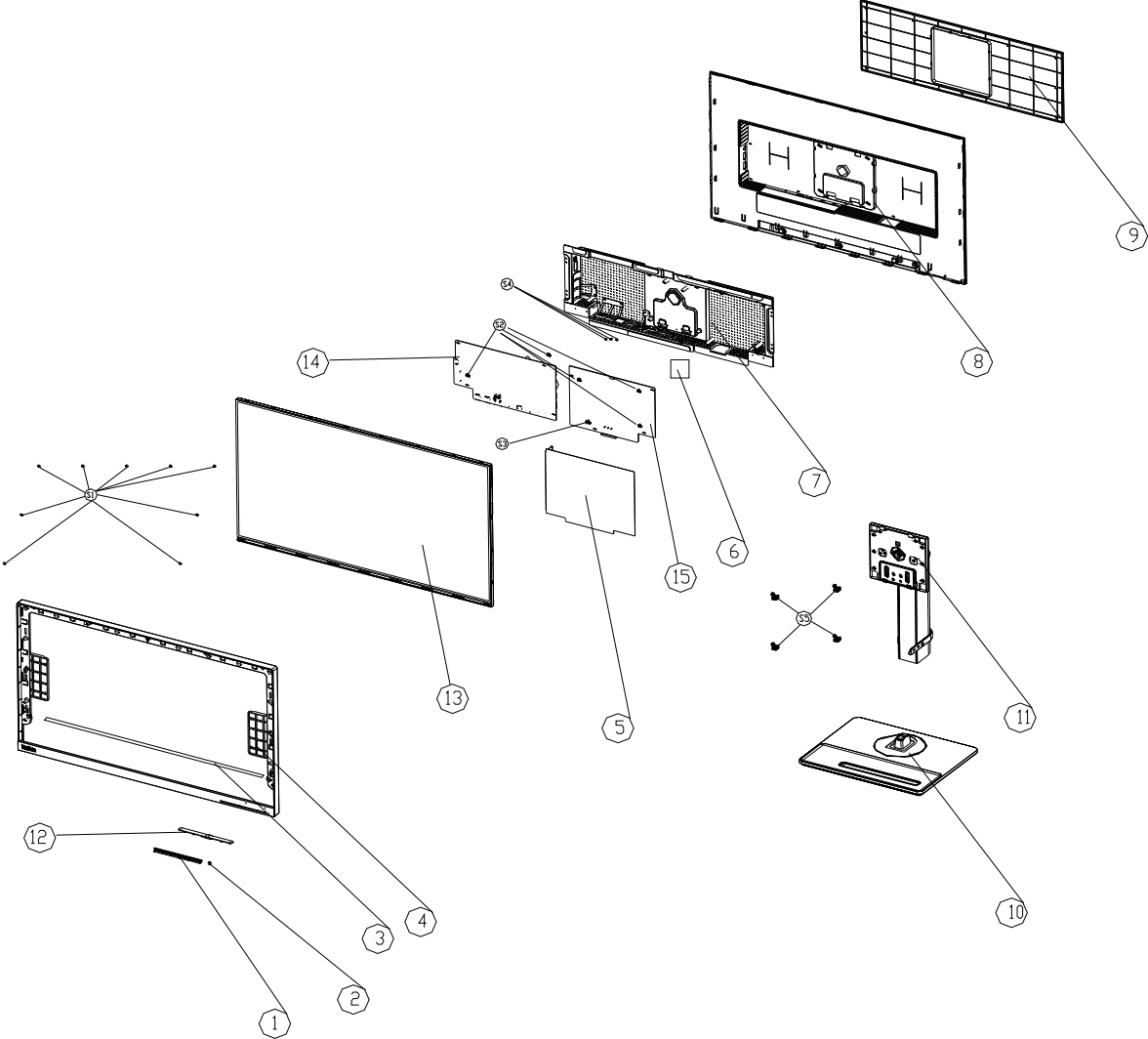


P24H-20 Simplified service manual for dismantling

Model Name: Lenovo P24H-20



Exploded Diagram



1. Precaution

Please read the precaution as follows to prevent any damages to the LCD Monitor.

Make sure all power connector is removed. Be sure that the LCD Monitor is in power off status.

<p>Prepare soft cloth and sponge as working platform to place LCD monitor horizontally.</p>	
<p>Hold LCD by the side carefully and DON'T touch or press panel directly.</p>	

2. Appropriate tools

Select the Appropriate tools for disassembly and re-assembly.

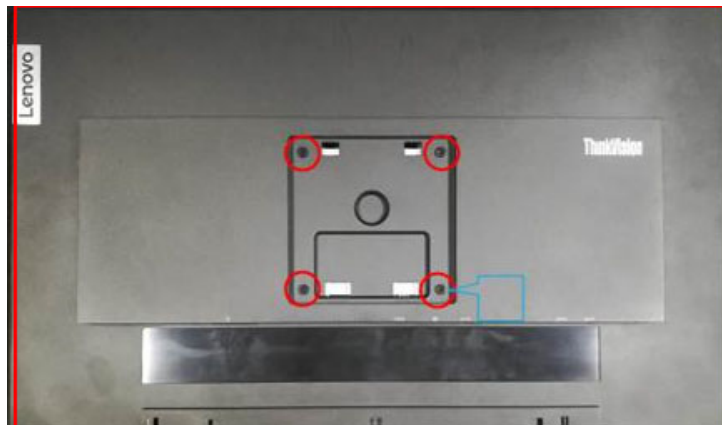
Phillips screwdriver (#2)	
spacer screwdriver	
C/D disassembly tool	
Gloves or soft cloth	

3. Disassembly SOP

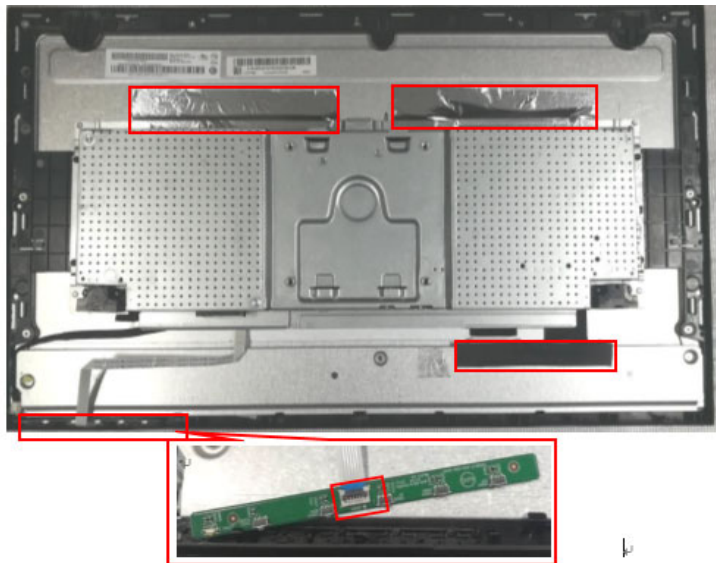
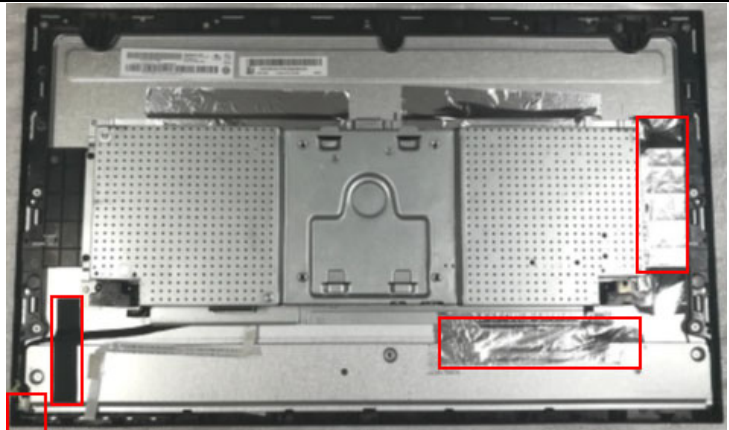
Starting from the back of the monitor, remove the stand assy



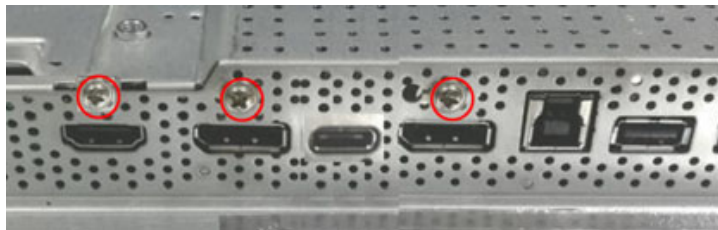
Remove the screw*4pcs
Tool : Screwdriver #2



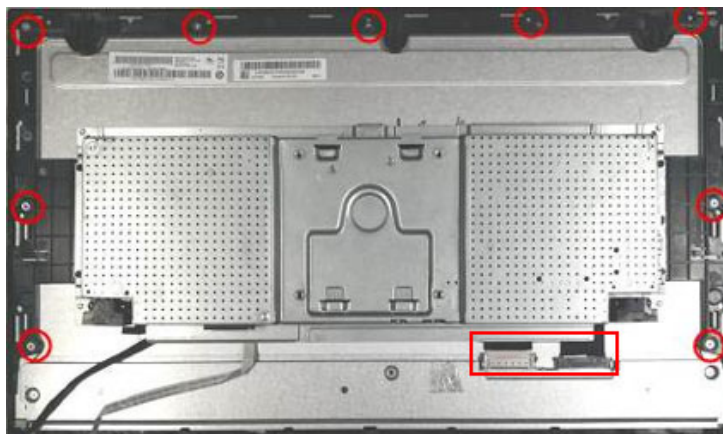
Take off the tape and
disconnect the connector.
Remove the key board.



Remove the screw*3pcs
Tool: Screwdriver #2



Remove the screw*9pcs and
disconnect the pins.
Tool : Screwdriver #2



Separated the panel and the middle frame.



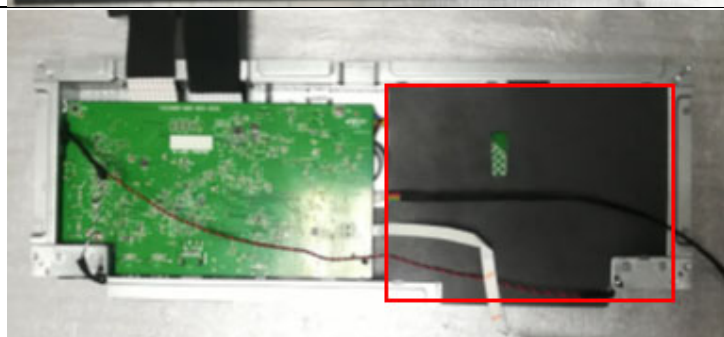
The panel



The middle frame

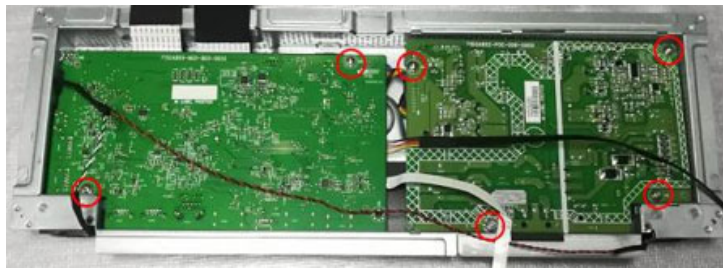


Take off the tape and the mylar.

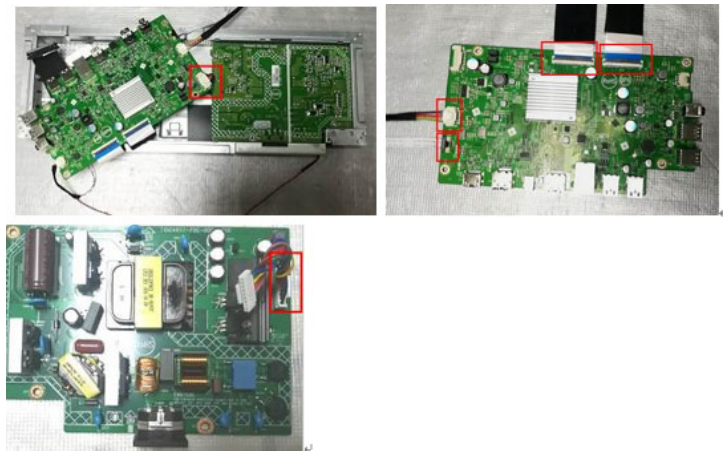


Remove the screw*6pcs to remove the Main board and the power board.

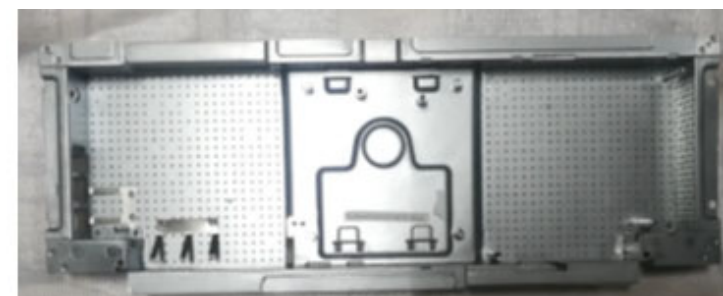
Tool: Screwdriver #2



Remove the pins and boards



The mainframe



The Rear Cover

