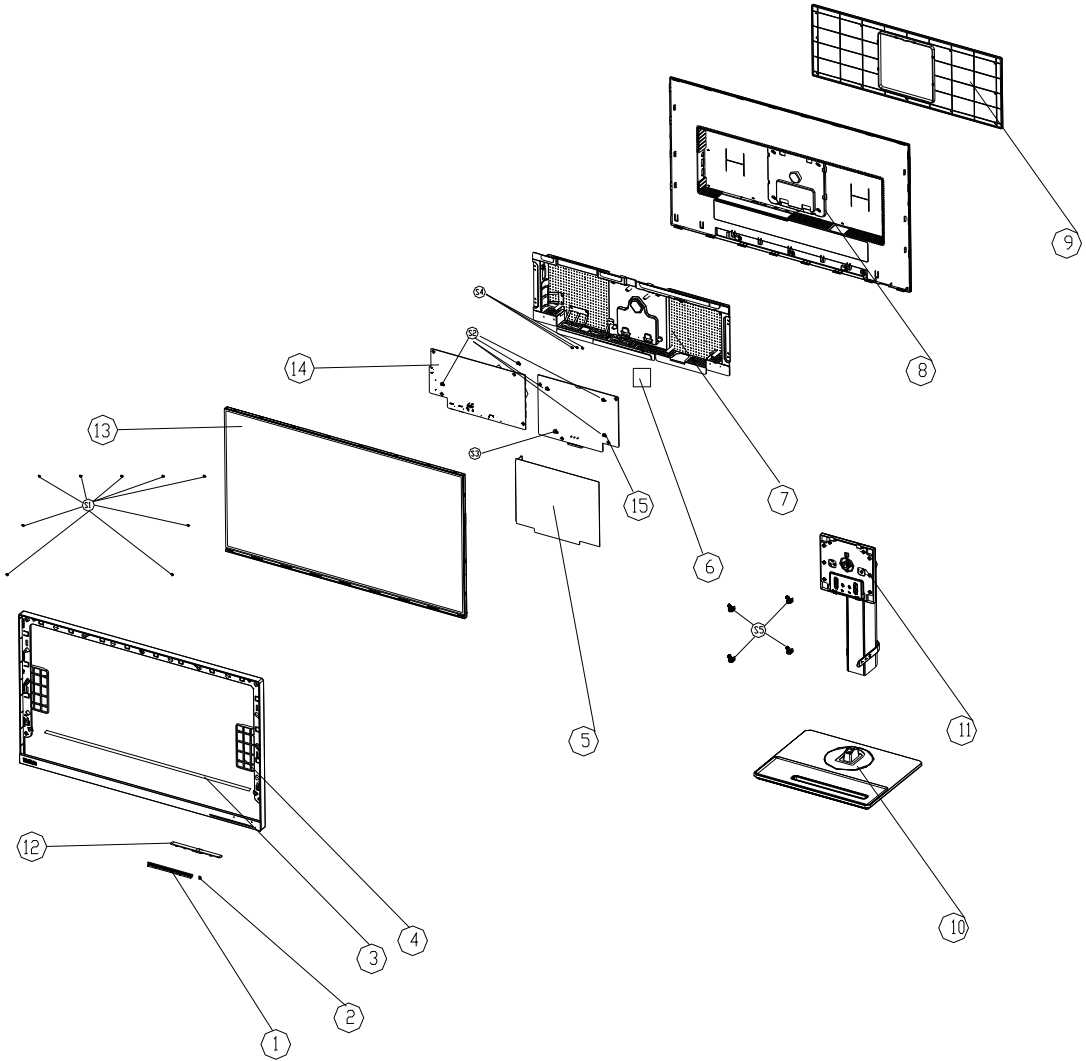


P24q-20 Simplified service manual for dismantling



Model Name: Lenovo P24q-20

Exploded Diagram




1. Precaution

Please read the precaution as follows to prevent any damages to the LCD Monitor.
Make sure all power connector is removed. Be sure that the LCD Monitor is in power off status.

<p>Prepare soft cloth and sponge as working platform to place LCD monitor horizontally.</p>	
<p>Hold LCD by the side carefully and DON'T touch or press panel directly.</p>	

2. Appropriate tools

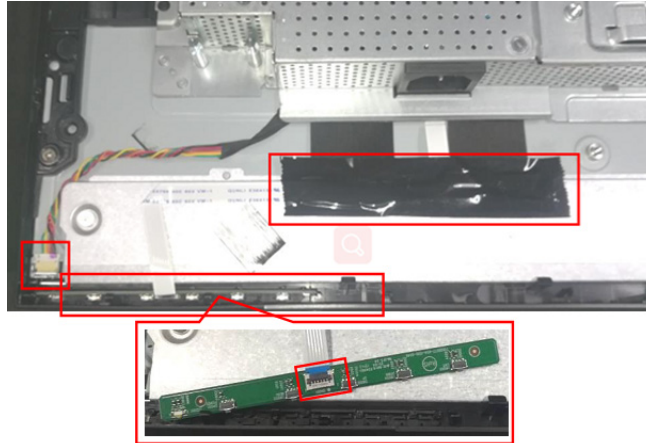
Select the Appropriate tools for disassembly and re-assembly.

Phillips screwdriver (#2)	
spacer screwdriver	
C/D disassembly tool	
Gloves or soft cloth	

3. Disassembly SOP

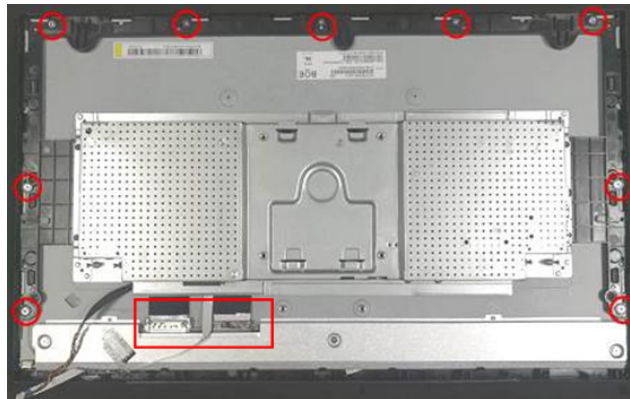
<p>Put the monitor on a flat surface (Put the EPE on under the monitor)</p> <p>Push the button to remove the stand-base assy.</p>	
<p>Remove the screw * 4pcs Tool : Screwdriver #2</p>	
<p>Use the C/D disassembly tool to release Rear cover</p>	
<p>Remove All tape and foil</p>	

Unplug light bar line and remove the key board



Remove All screw.
Tool : Screwdriver #2

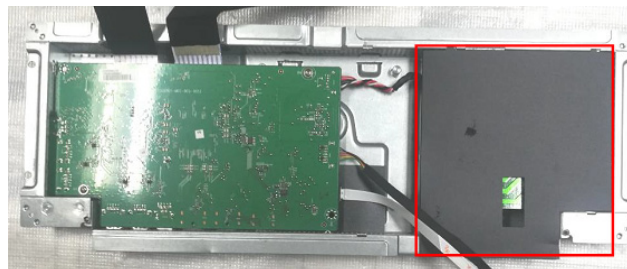
Unplug the LVDS line.



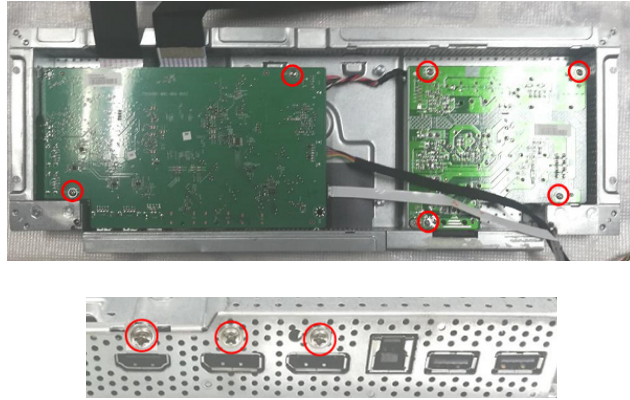
Release the middle frame from the Panel



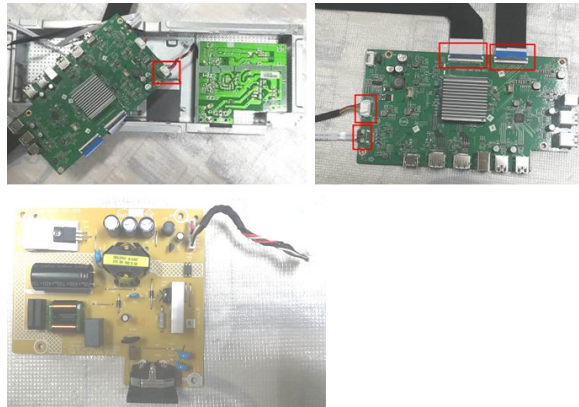
Remove the Mylar



Remove All screw.
Tool : Screwdriver #2



Unplug the connectors



Take out the mylar sheet from
Mainframe

