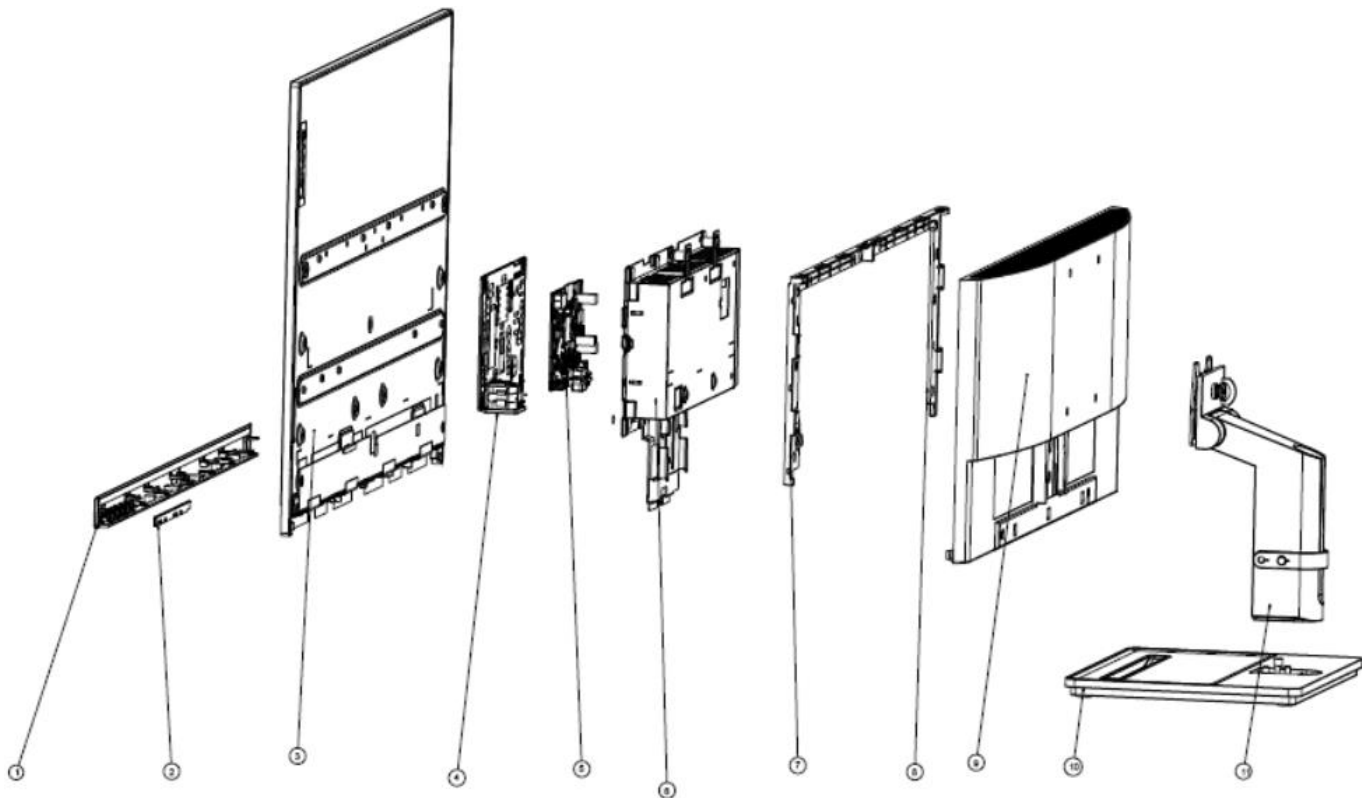


S24e-20 Simplified service manual for dismantling

Model Name: Lenovo S24e-20

Exploded Diagram



ITEM PART NO.	QTY	REMARK
A	5	PCBA SCREW
B	2	VISA SCREW
C	10	INSIDE MIDDLE COVER SCREW
D	4	CHASSIS SCREW

ITEM	PART NO.	PART NAME	QTY	Remark
1	16400000	CHIN ASSY	1	
2	16400000	FUNCTION KEY BD	1	
3	16400000	PANEL	1	
4	16400000	POWER BD	1	
5	16400000	F BD	1	
6	16400000	CHASSIS ASSY	1	
7	16400000	INSIDE MIDDLE COVER LEFT	1	
8	16400000	INSIDE MIDDLE COVER RIGHT	1	
9	16400000	REAR COVER ASSY	1	
10	16400000	STAND ARM	1	
11	16400000	STAND BASE	1	

1. Precaution

Please read the precaution as follows to prevent any damages to the LCD Monitor.

Make sure all power connector is removed. Be sure that the LCD Monitor is in power off status.

Prepare soft cloth and sponge as working platform to place LCD monitor horizontally.



Hold LCD by the side carefully and DON'T touch or press panel directly.



2. Appropriate tools

Select the Appropriate tools for disassembly and re-assembly.

Phillips screwdriver (#2)	
spacer screwdriver	
C/D disassembly tool	
Gloves or soft cloth	

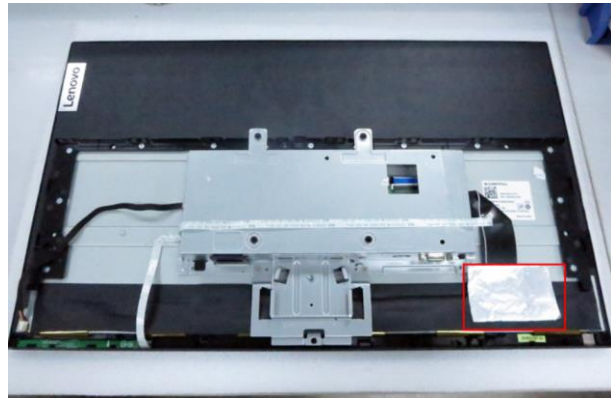
3. Disassembly SOP

<p>Put the monitor on a flat surface (Put the EPE on under the monitor)</p>	
<p>Remove the screw * 1pcs and pull out the stand base Tool : Screwdriver #2</p>	
<p>Remove the screw * 1pcs Tool : Screwdriver #2</p>	
<p>Use the C/D disassembly tool to release Rear cover hook from disassemble hole on bottom</p>	

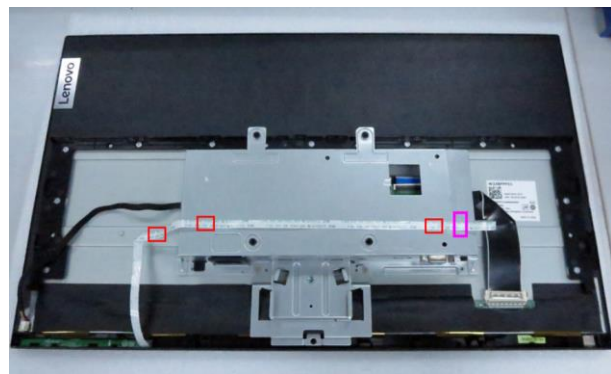
Remove the rear cover



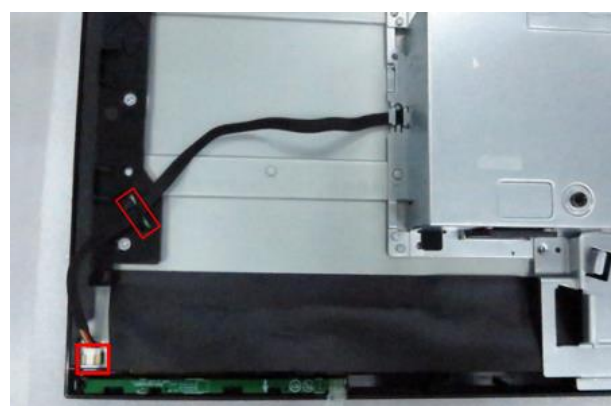
Remove All tape and foil



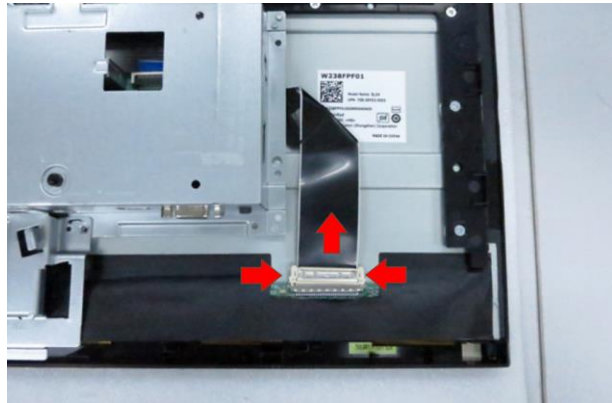
Unplug key cable and release key cable



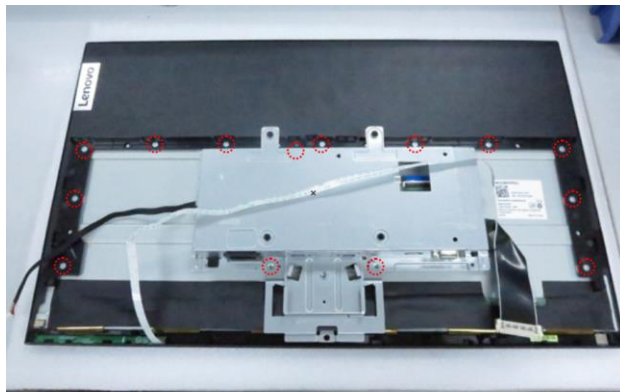
Unplug light bar cable and release light cable from hook of middle frame



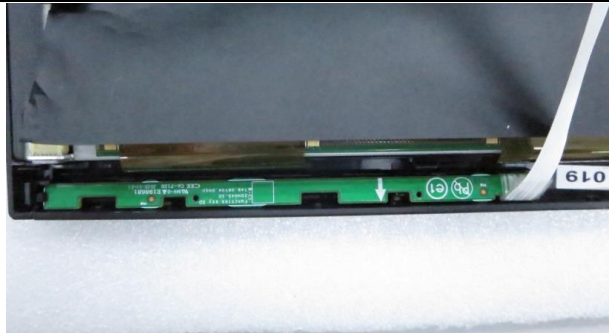
Unplug LVDS cable from the panel connector



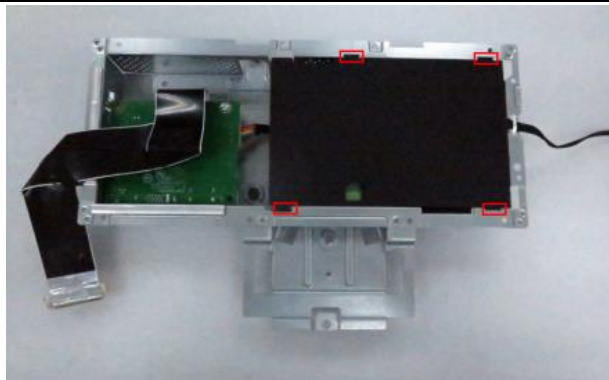
Remove All screw to release middle frame (left & right) and main chassis.
Tool: Screwdriver #2



Release the keypad PCB from the hook of the front bezel



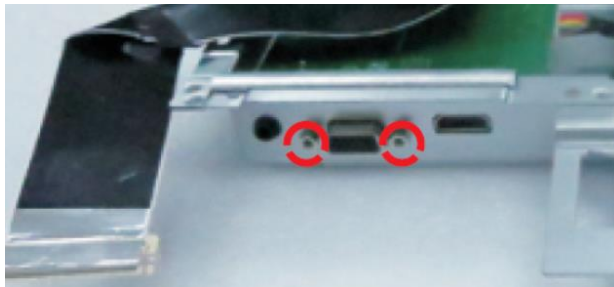
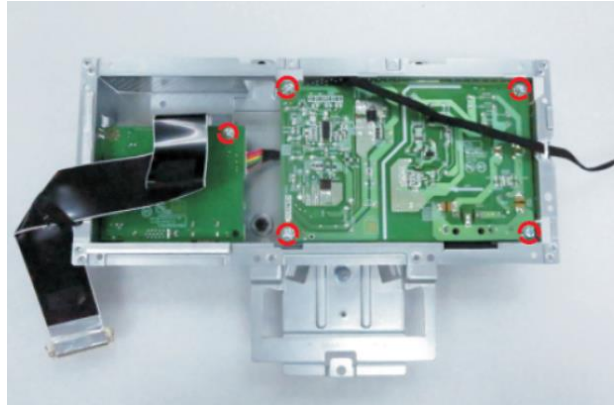
Take out the mylar sheet from Main chassis



Remove All screw.

Tool : Screwdriver #2

Tool : spacer screwdriver



Take out PCB and peel off all mylar.



Take out the thermal pads from Power PCB

