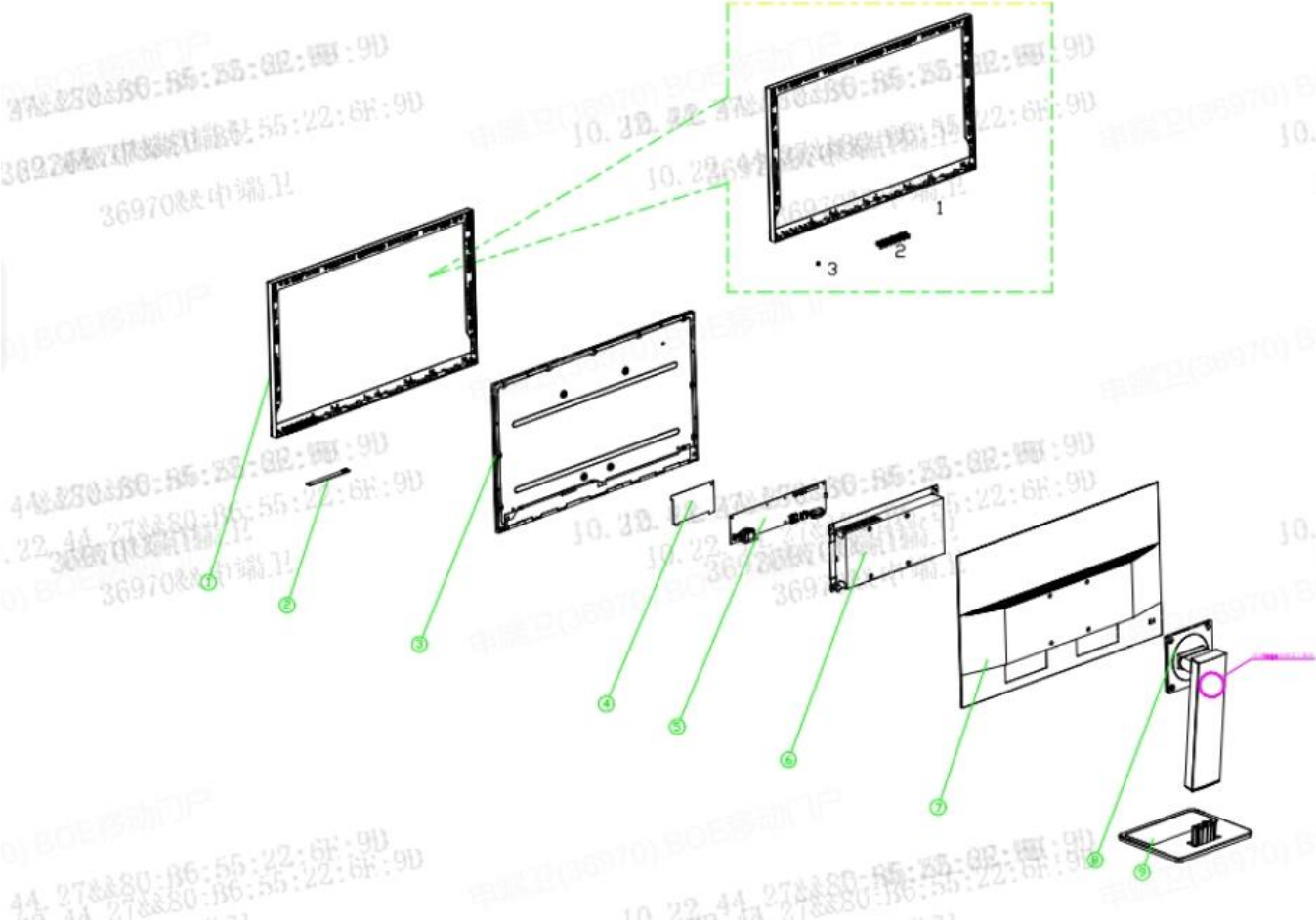


BOE.

E24-28 Simplified service manual for dismantling

Model Name: Lenovo E24-28

Exploded Diagram



| NO. | Part Name |
|-----|-------------------|
| 1 | MIDDLE_FRAME_ASSY |
| 1-1 | MIDDLE_FRAME |
| 1-2 | key function |
| 1-3 | Lens |
| 2 | Key_BOARD |
| 3 | PANEL |
| 4 | Mylar |
| 5 | MAIN_BOARD |
| 6 | SHIELDING |
| 7 | REARCOVER |
| 8 | NECE |
| 9 | Stand |

1. Precaution

Please read the precaution as follows to prevent any damages to the LCD Monitor.

Make sure all power connector is removed. Be sure that the LCD Monitor is in power off status.

Prepare soft cloth and sponge as working platform to place LCD monitor horizontally.



Hold LCD by the side carefully and DON'T touch or press panel directly.



2. Appropriate tools

Select the Appropriate tools for disassembly and re-assembly.

| | |
|---------------------------|--|
| Phillips screwdriver (#2) |  |
| spacer screwdriver |  |
| C/D disassembly tool |  |
| Gloves or soft cloth |  |

3. Disassembly SOP

Put the monitor on a flat surface
(Put the EPE on under the
monitor)



Remove the screw * 4 pcs
Tool : Screwdriver #2



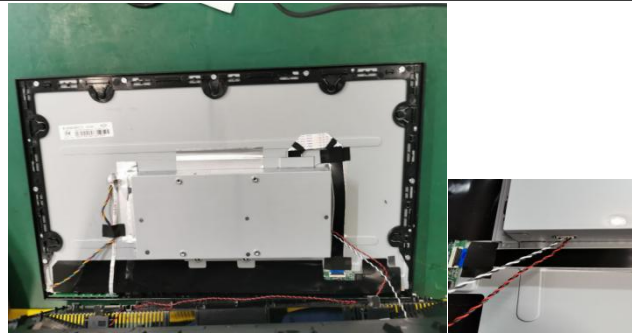
Pull out stand



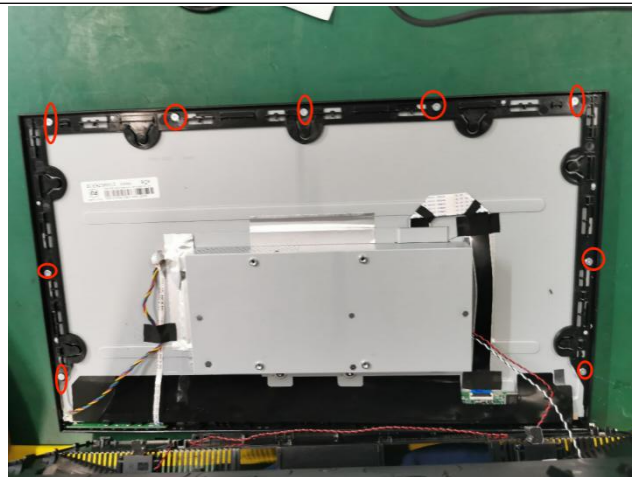
Use the C/D disassembly tool to release Rear cover hook from disassemble hole on bottom



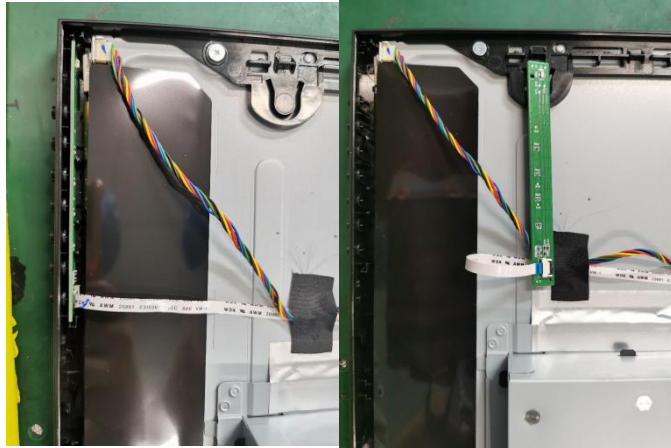
Disassemble the back cover, take out the speaker cable at the side of the isolation cover, and take down the back cover



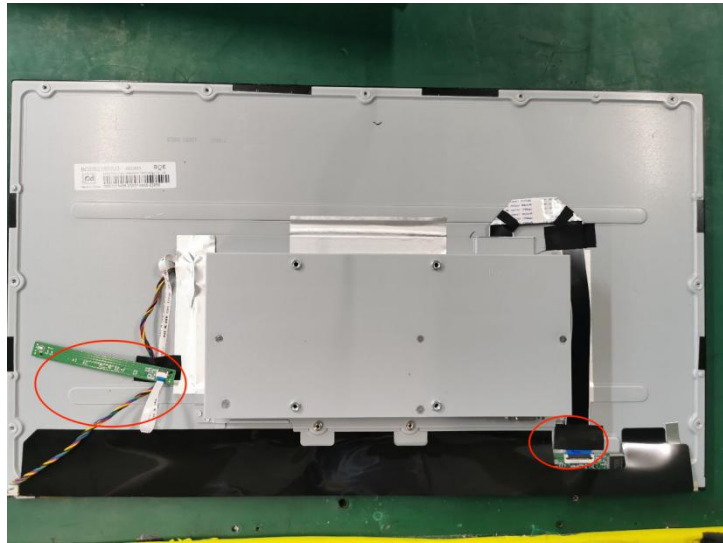
Remove the middle frame screws
Tool : Screwdriver #2



Remove the key board



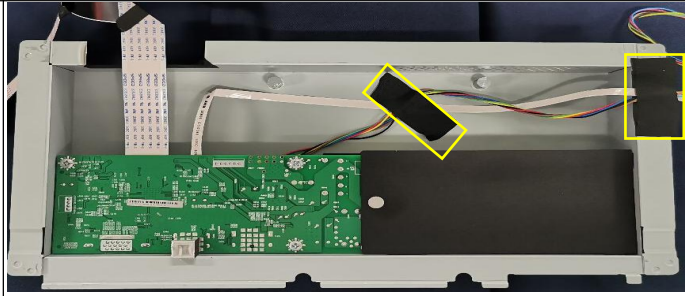
Pull out the left light cable, lift the right interface cover, and take out the FFC cable



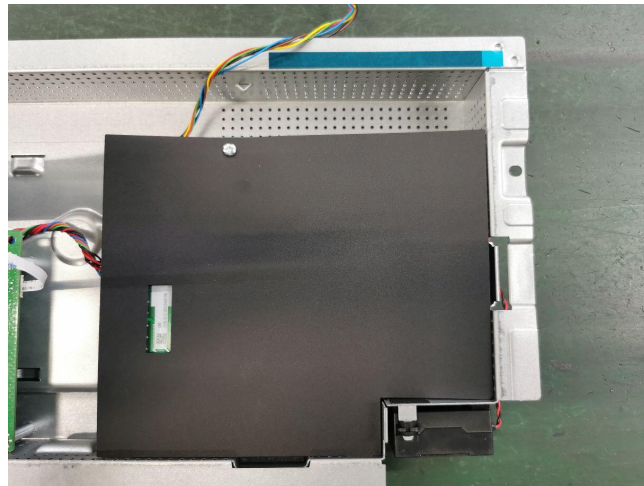
Remove the isolation cover



Remove the acetate tape



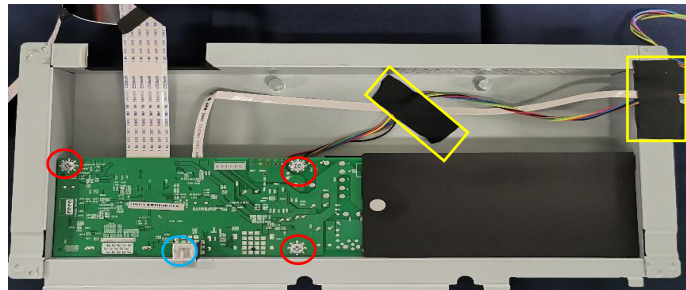
Remove the black Mylar from the power board



Remove All screw.

Tool : Screwdriver #2

Tool : spacer screwdriver



Take out PCB and Peel off all mylar.



Take out the Thermal pads from
Power pcb

