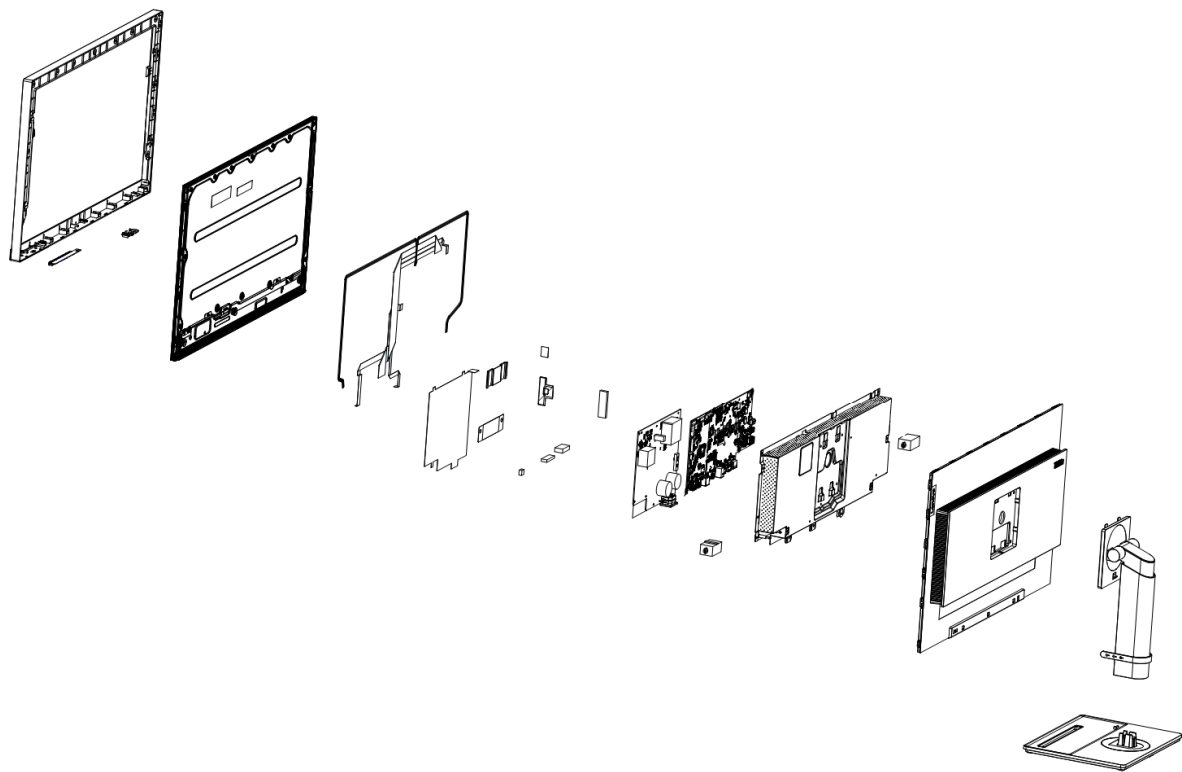


P27u-20 Simplified service manual for dismantling

Model Name: Lenovo P27u-20



Exploded Diagram



1. Precaution




Please read the precaution as follows to prevent any damages to the LCD Monitor.

Make sure all power connector is removed. Be sure that the LCD Monitor is in power off status.

| | |
|---------------------------------------------------------------------------------------------|-------------------------------------------------------------------------------------|
| <p>Prepare soft cloth and sponge as working platform to place LCD monitor horizontally.</p> |  |
| <p>Hold LCD by the side carefully and DON'T touch or press panel directly.</p> |  |

2. Appropriate tools

Select the Appropriate tools for disassembly and re-assembly.

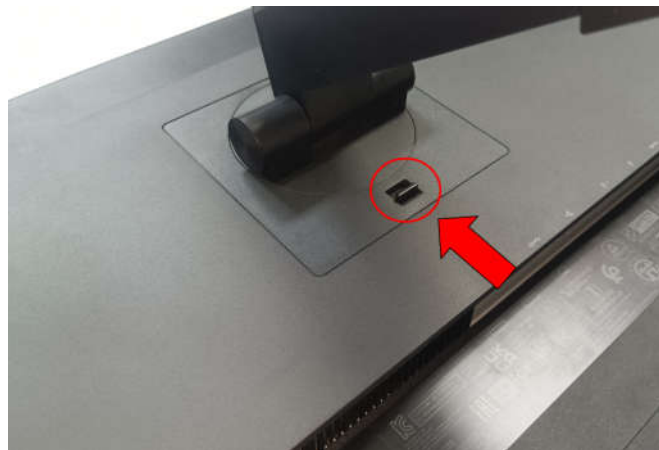
| | |
|---------------------------|-------------------------------------------------------------------------------------|
| Phillips screwdriver (#2) |  |
| C/D disassembly tool |  |
| Gloves or soft cloth |  |

3. Disassembly SOP

Put the monitor on a flat surface
(Put the EPE on under the monitor)



Push the button to release the stand.



Remove the screws * 4pcs.
Tool : Screwdriver #2



Use the C/D disassembly tool to release Rear cover hook from disassemble hole on bottom.



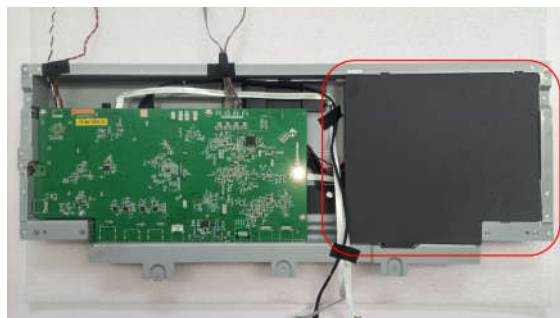
Remove the chassis screws (red) ;
Remove All tapes (blue) ;
Remove All speakers (orange) and
light bar connectors (green) .
Tool : Screwdriver #2



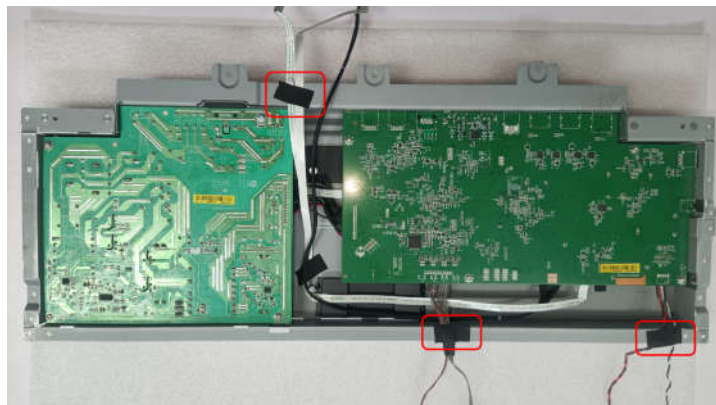
Release the Panel cable;
Release the keypad board and Sensor
structure;
Then take out the chassis.



Take out the mylar sheet from Main
chassis.

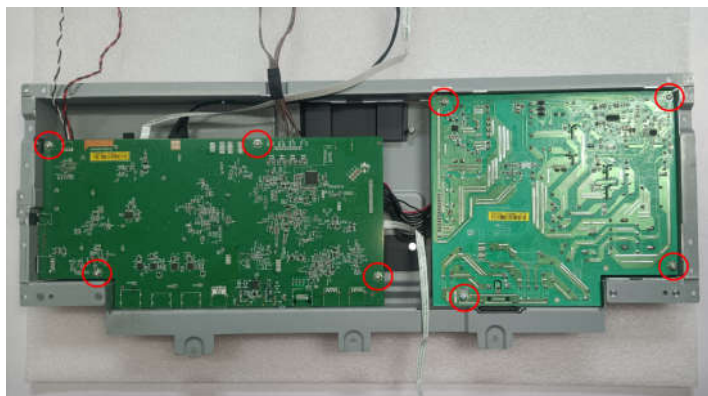


Remove All tapes from Main chassis.

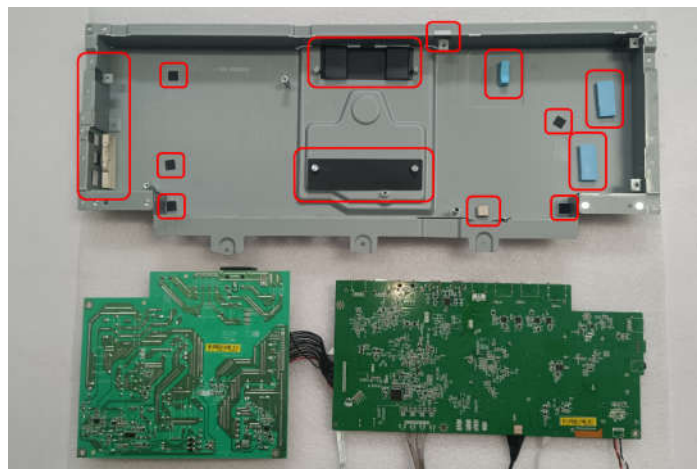


Remove PCBs screws*8pcs.

Tool : Screwdriver #2



Take out PCBs and Peel off all
Thermal pads 、 Gaskets 、 Mylars



Remove screws*10pcs to take out the
Front bezel.

Tool : Screwdriver #2

