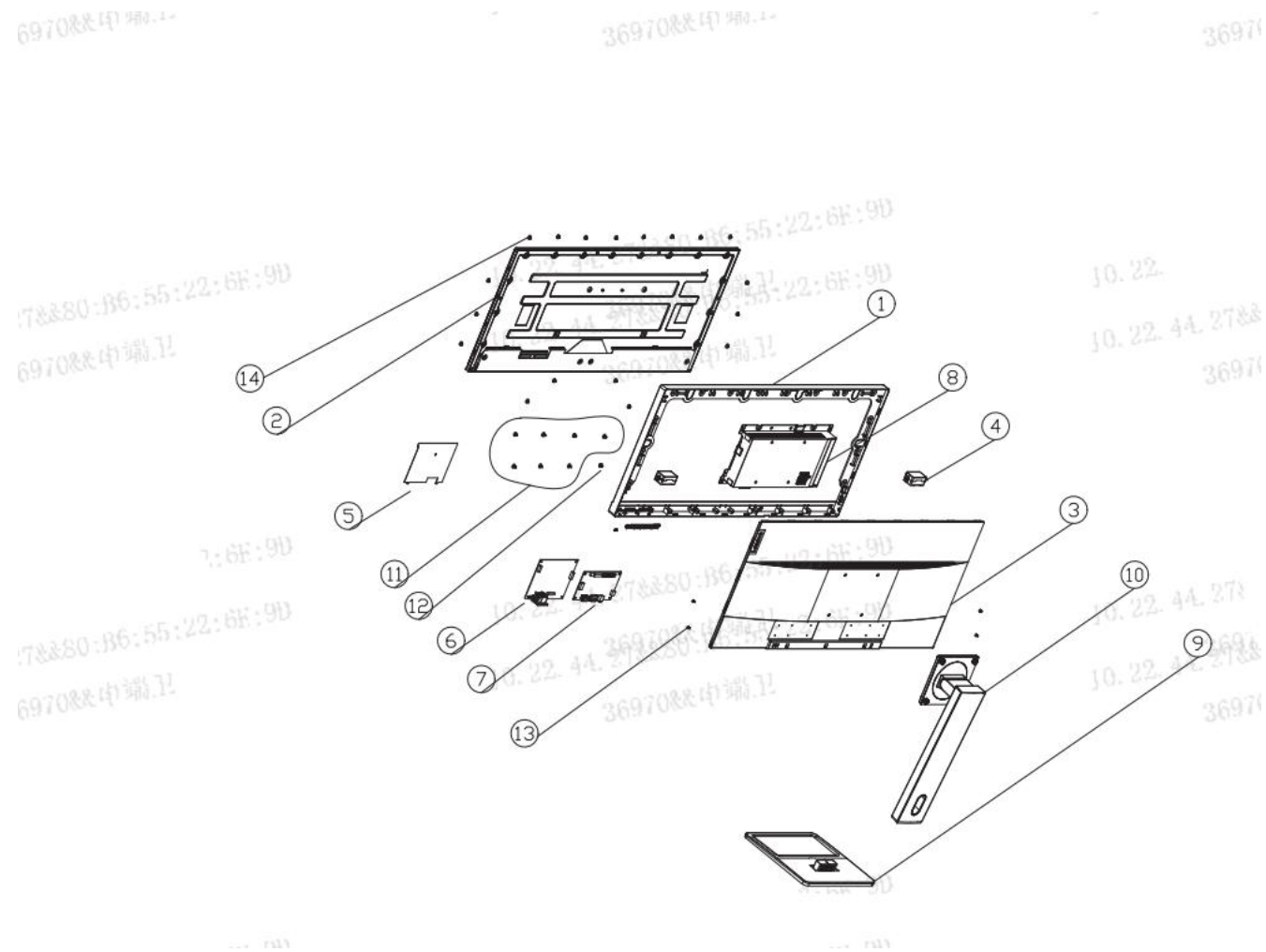


BOE.

E29W-20 Simplified service manual for dismantling

Model Name: Lenovo E29W-20

Exploded Diagram



NO.	Part Name
1	Middle frame
2	Panel
3	Rear shell
4	speaker
5	Power board mylar
6	Power board
7	Main board
8	Isolation cover
9	Base
10	Stand assy
11	Screw
12	Screw
13	Screw
14	Screw
15	Isolation column

1. Precaution

Please read the precaution as follows to prevent any damages to the LCD Monitor.

Make sure all power connector is removed. Be sure that the LCD Monitor is in power off status.

Prepare soft cloth and sponge as working platform to place LCD monitor horizontally.



Hold LCD by the side carefully and DON'T touch or press panel directly.





2. Appropriate tools

Select the Appropriate tools for disassembly and re-assembly.

Phillips screwdriver (#2)	
spacer screwdriver	
C/D disassembly tool	
Gloves or soft cloth	

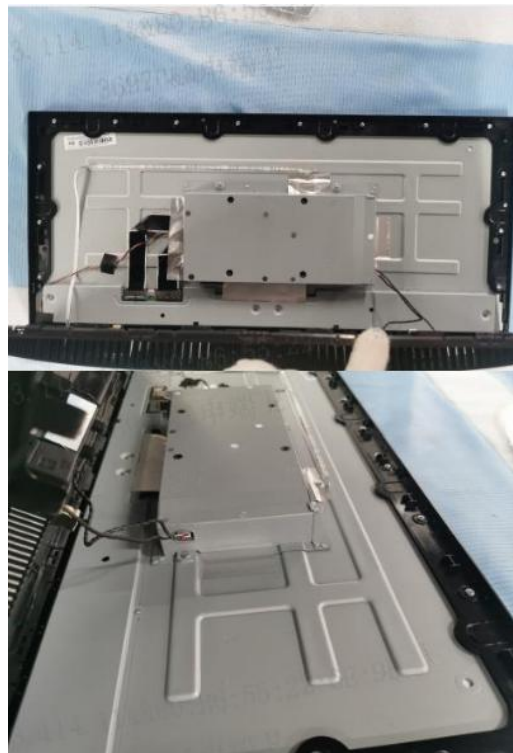
3. Disassembly SOP

<p>Put the monitor on a flat surface (Put the EPE on under the monitor)</p>	
<p>Remove the screw * 4pcs Tool : Screwdriver #2</p>	
<p>Pull out stand</p>	

Use the C/D disassembly tool to release Rear cover hook from disassemble hole on bottom



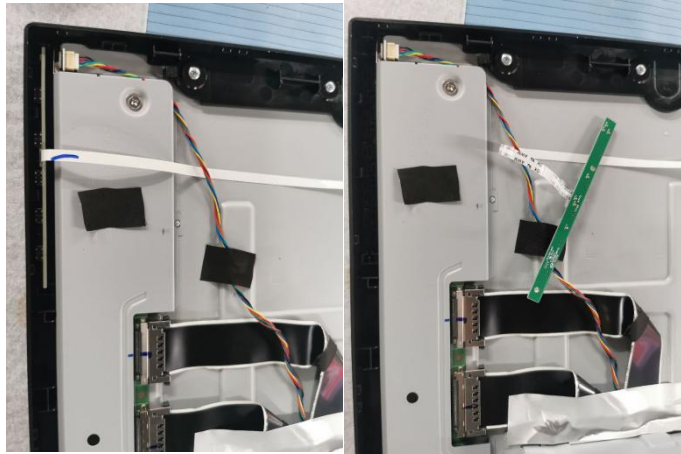
Disassemble the back cover, take out the speaker cable at the side of the isolation cover, and take down the back cover



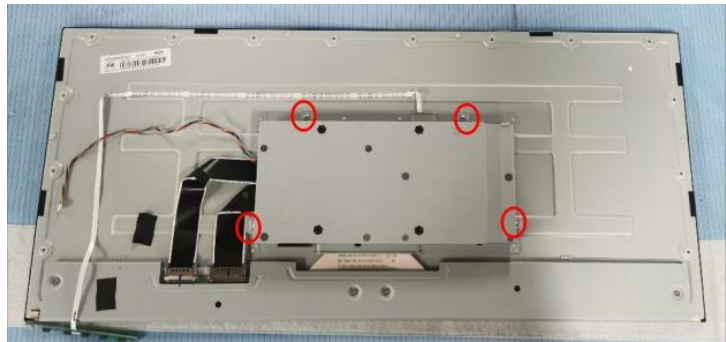
Remove the middle frame screws
Tool : Screwdriver #2



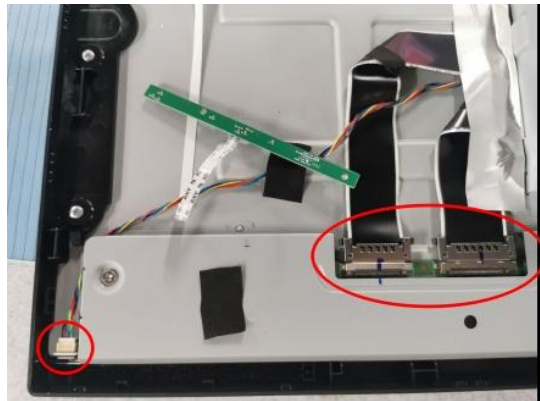
Remove the key board



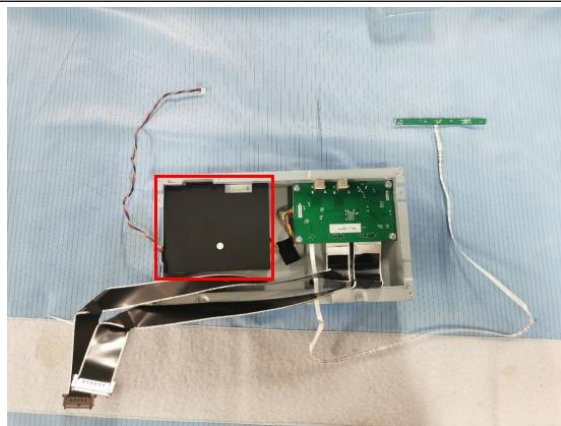
Take out the screws of the isolation cover



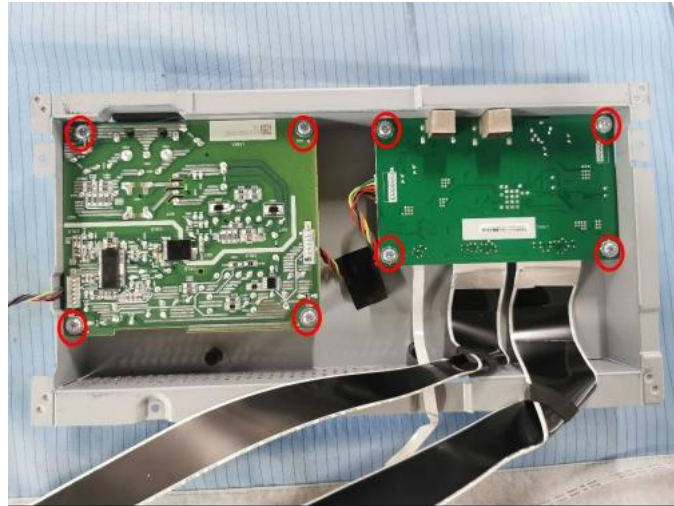
Remove the lamp wire and FFC wire



Remove the black Mylar from the power board



Remove the main board and power board screws



Take out the main board and power board

