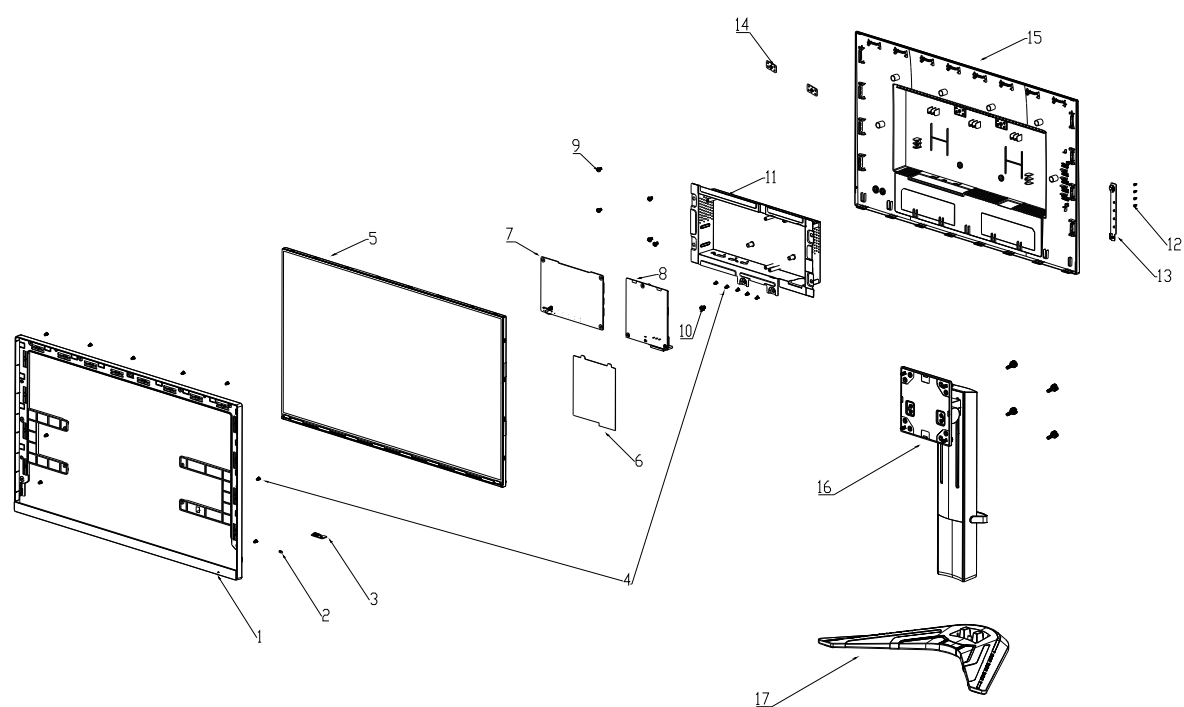


# G24-20 Simplified service manual for dismantling

Model Name: Lenovo G24-20



Exploded Diagram



## 1. Precaution

Please read the precaution as follows to prevent any damages to the LCD Monitor.

Make sure all power connector is removed. Be sure that the LCD Monitor is in power off status.

<p>Prepare soft cloth and sponge as working platform to place LCD monitor horizontally.</p>	
<p>Hold LCD by the side carefully and DON'T touch or press panel directly.</p>	

## 2. Appropriate tools

Select the Appropriate tools for disassembly and re-assembly.

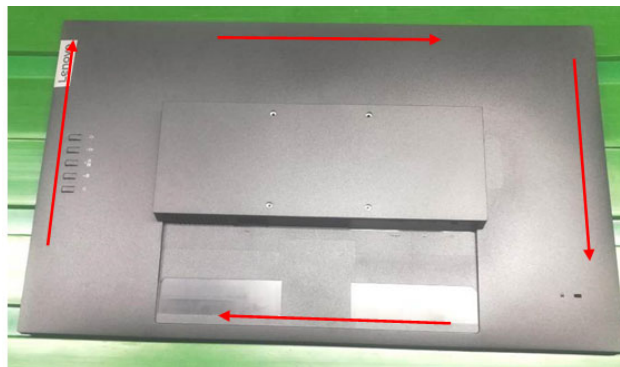
Phillips screwdriver (#2)	
spacer screwdriver	
C/D disassembly tool	
Gloves or soft cloth	

### 3. Disassembly SOP

Starting from the back of the monitor, remove the screw\*4pcs to remove the STAND-BASE ASS'Y  
Tool: Screwdriver #2



Use disassembly tool to open all the latches along the edge of the Rear Cover.



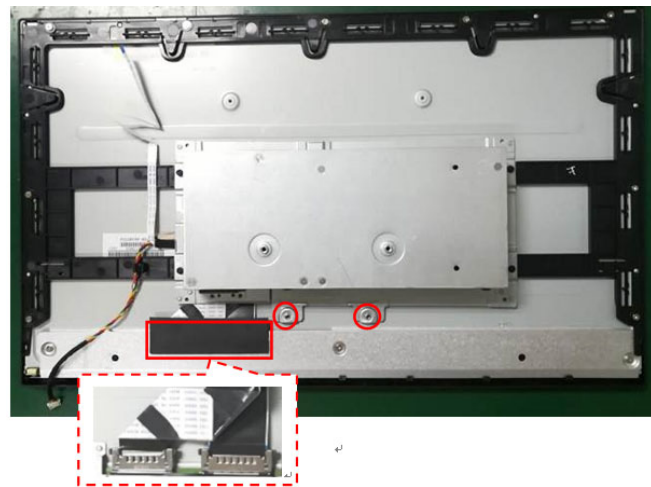
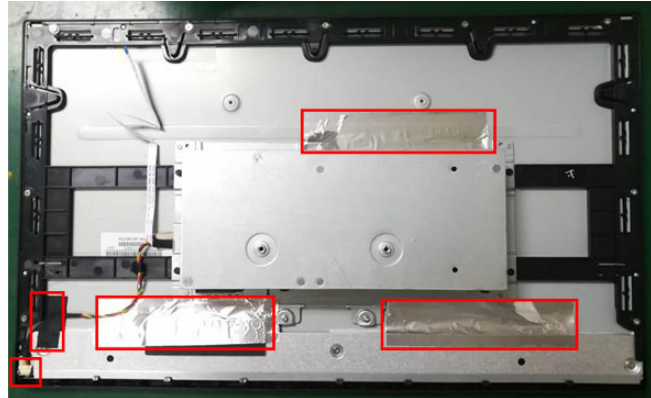
Disconnect the connector of key board. (Note: Don't damage the key board.)



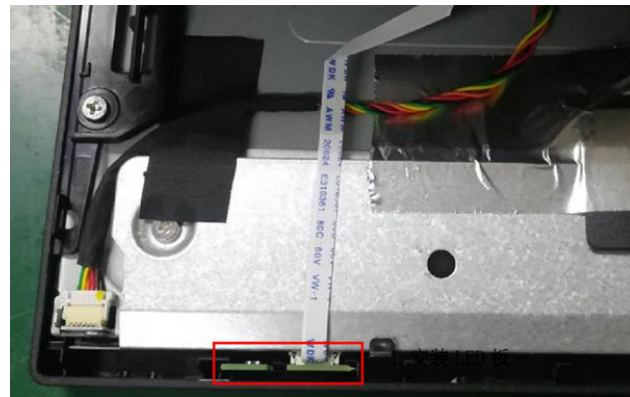
Take off the tape and disconnect the connectors.

Unscrew the screw\*2pcs to remove the main frame.

Tool: Screwdriver #2

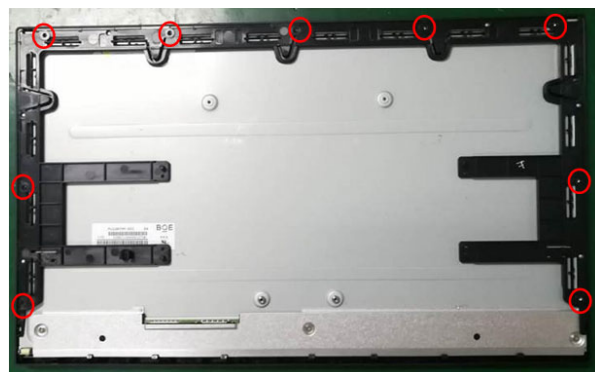


Remove the LED board.



Remove the screw\*9pcs to separate the panel and the middle frame.

Tool : Screwdriver #2



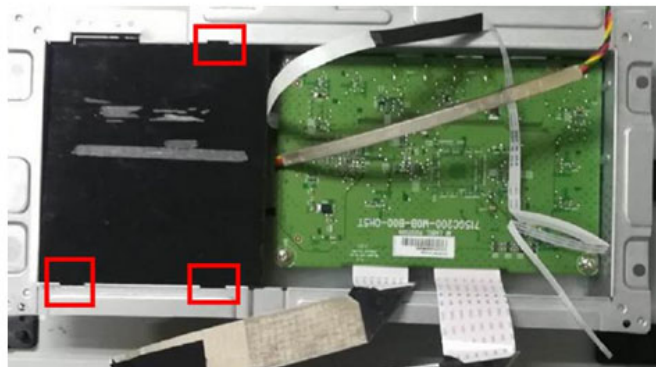
The panel



The middle frame

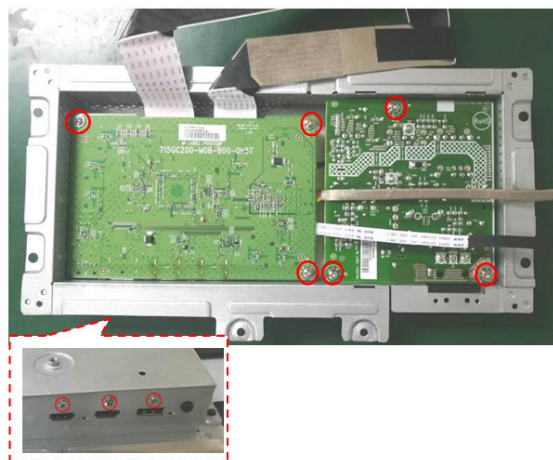


Take off the mylar



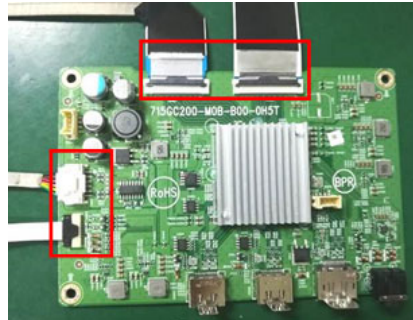
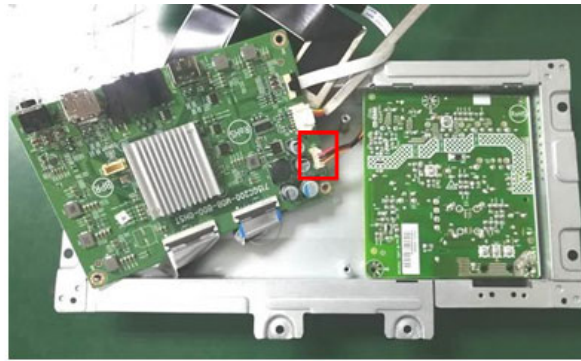
Remove the screw\*9pcs to remove the boards.

Tool: Screwdriver #2

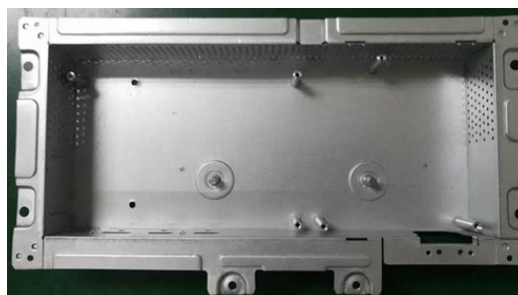
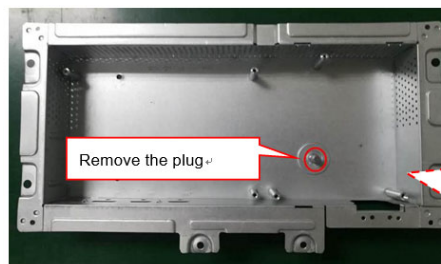




Remove the pins and boards



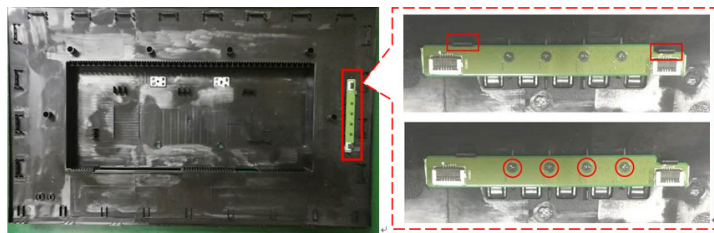
The mainframe





Unscrew the screw\*4pcs to  
remove the key board from rear  
cover

Tool: Screwdriver #2



The rear cover

