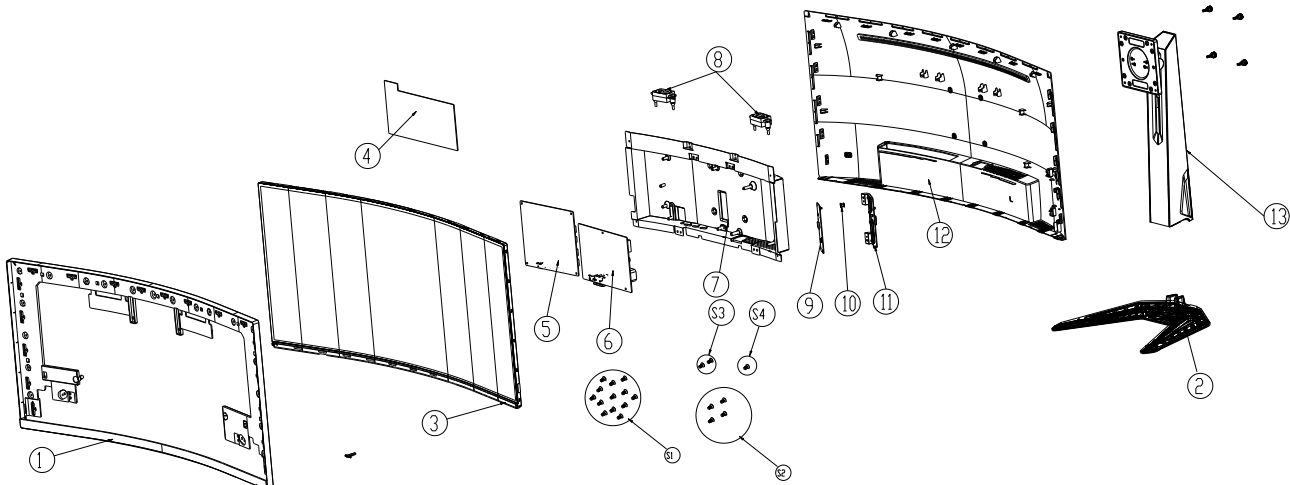


G34w-30 Simplified service manual for dismantling



Model Name: Lenovo G34w-30

Exploded Diagram



1. Precaution

Please read the precaution as follows to prevent any damages to the LCD Monitor.
Make sure all power connector is removed. Be sure that the LCD Monitor is in power off status.

<p>Prepare soft cloth and sponge as working platform to place LCD monitor horizontally.</p>	
<p>Hold LCD by the side carefully and DON'T touch or press panel directly.</p>	

2. Appropriate tools

Select the Appropriate tools for disassembly and re-assembly.

Phillips screwdriver (#2)	
spacer screwdriver	
C/D disassembly tool	
Gloves or soft cloth	

3. Disassembly SOP

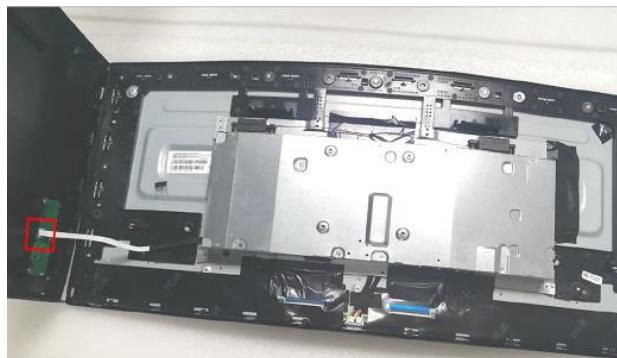
Unscrew the screw*4pcs to
remove the STAND-BASE ASS'Y
Tool: Screwdriver #2



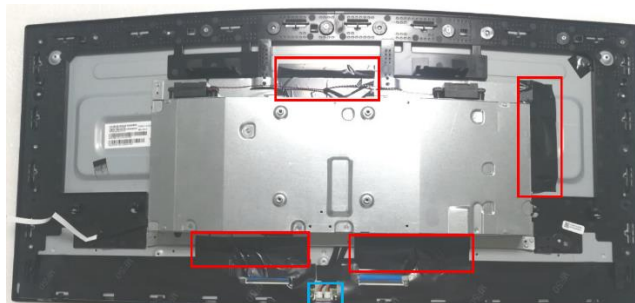
Use disassembly tool to open all
the latches along the edge of the
Rear Cover.



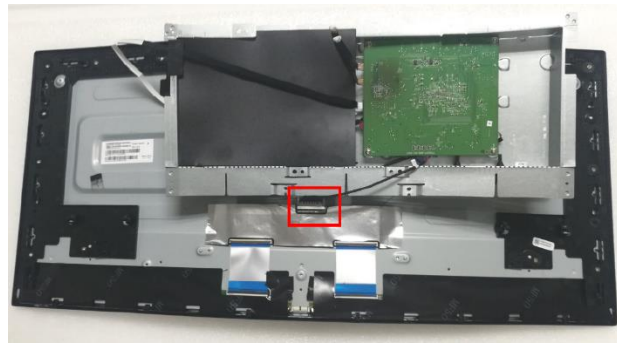
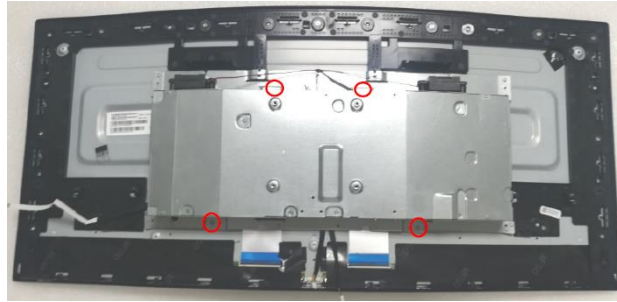
Disconnect the connector of key
board. (Note: Don't damage the
key board.)



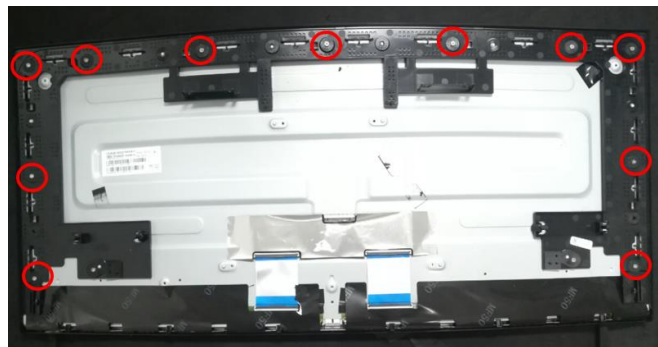
Take off the tape and disconnect
the connectors.



Unscrew the screw*4 pcs to
remove the main frame.
Tool: Screwdriver #2



Remove the screw*11 pcs to
separate the panel and the middle
frame.
Tool: Screwdriver #2



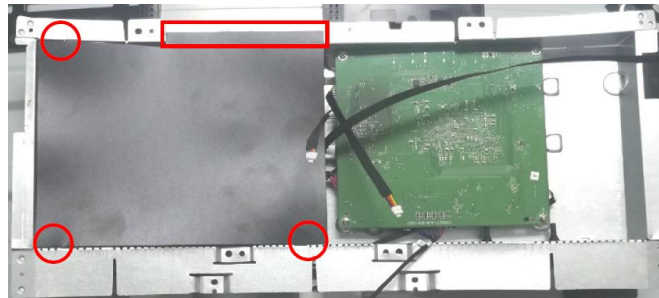
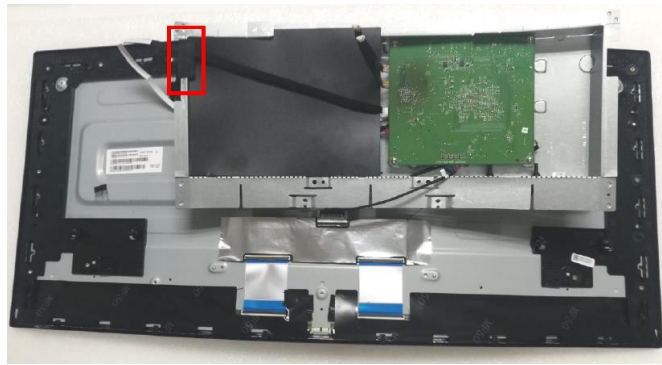
The panel



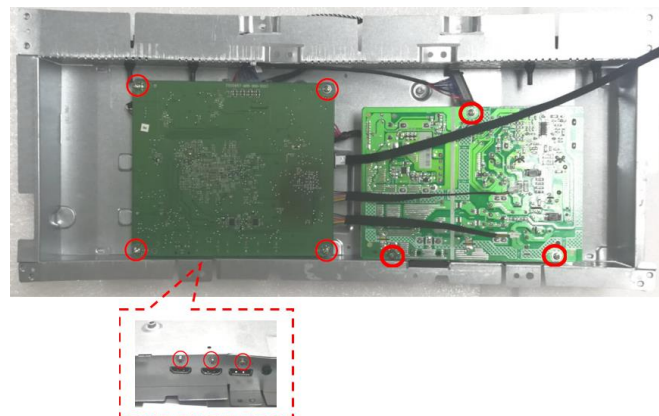
The middle frame



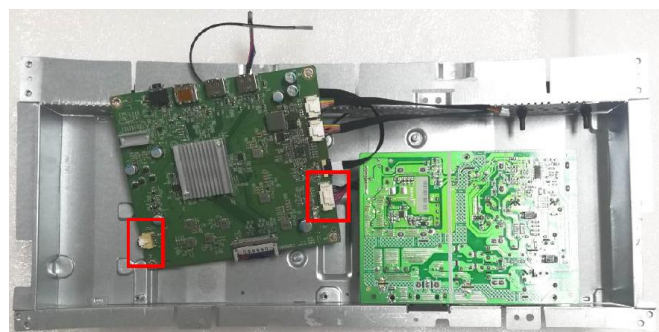
Tear off the tape and take off the mylar.

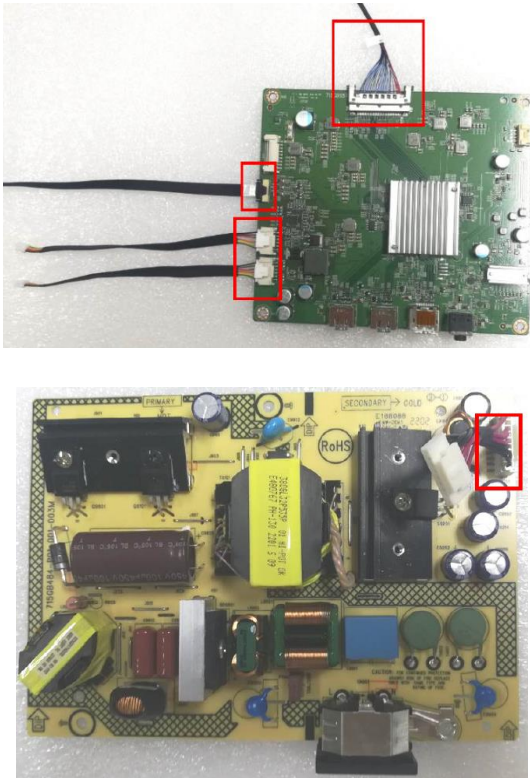
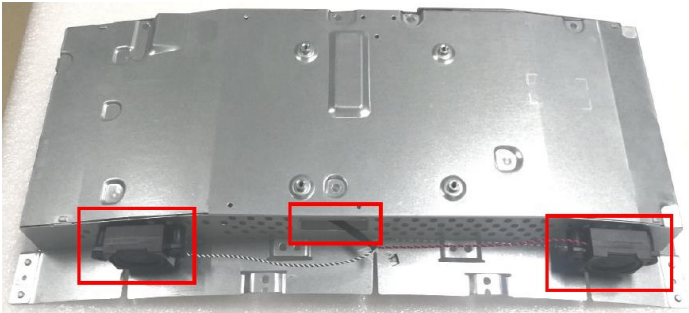
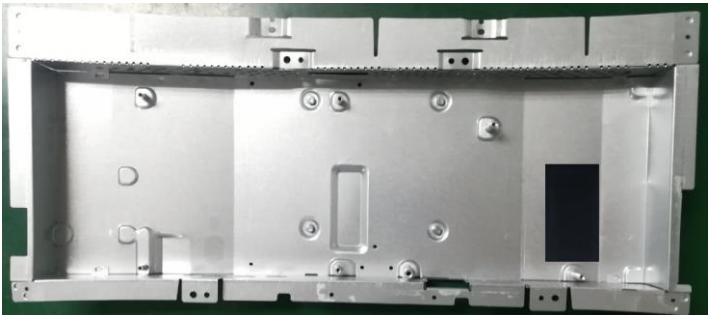


Remove the screw*10pcs
Tool: Screwdriver #2



Remove the pins and boards



	
Remove the speakers	
The mainframe	

Unscrew the screw*2 pcs to
remove the key board from rear
cover

Tool: Screwdriver #2



The rear cover

