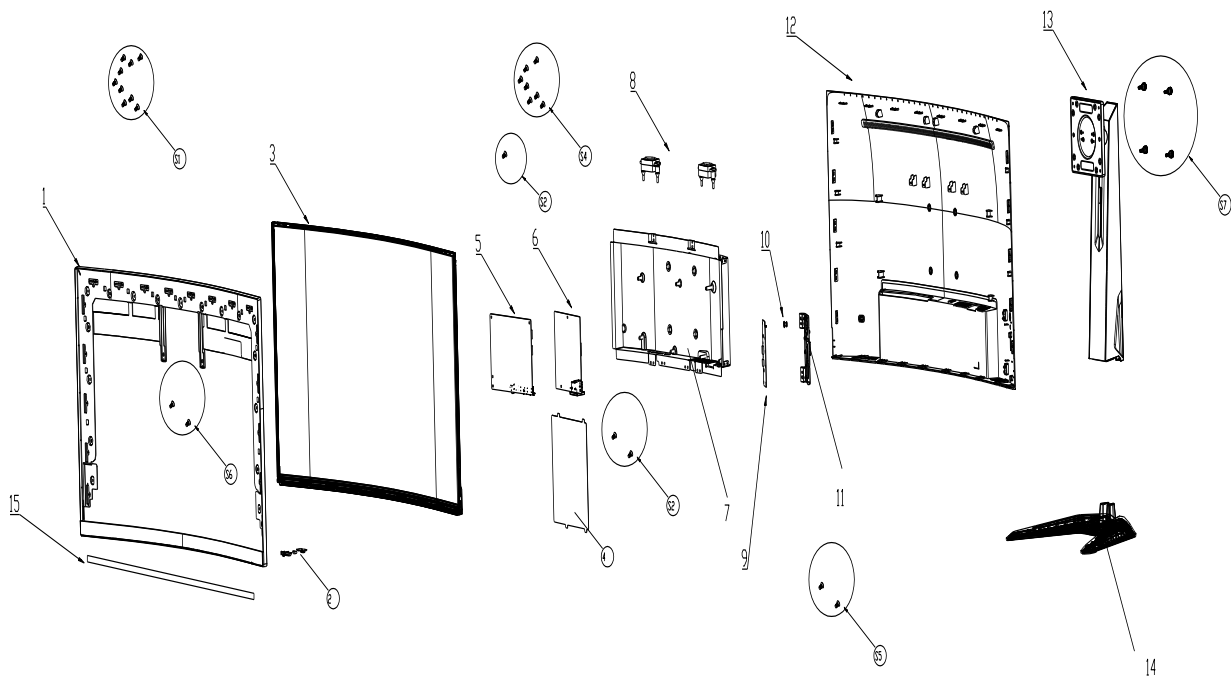


G32qc-30 Simplified service manual for dismantling



Model Name: Lenovo G32qc-30

Exploded Diagram



1. Precaution

Please read the precaution as follows to prevent any damages to the LCD Monitor.
Make sure all power connector is removed. Be sure that the LCD Monitor is in power off status.

<p>Prepare soft cloth and sponge as working platform to place LCD monitor horizontally.</p>	
<p>Hold LCD by the side carefully and DON'T touch or press panel directly.</p>	

2. Appropriate tools

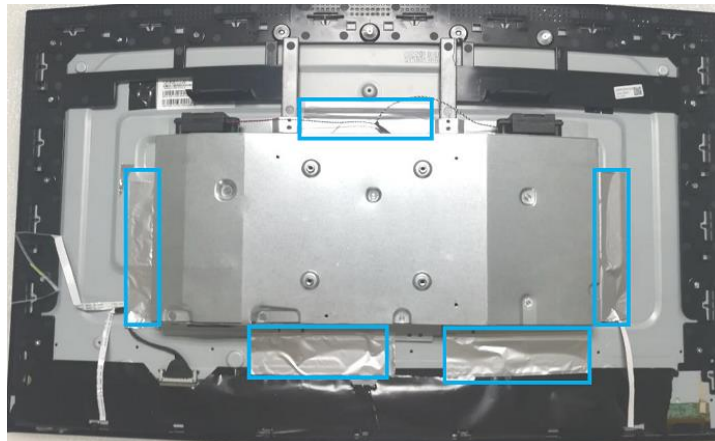
Select the Appropriate tools for disassembly and re-assembly.

Phillips screwdriver (#2)	
spacer screwdriver	
C/D disassembly tool	
Gloves or soft cloth	

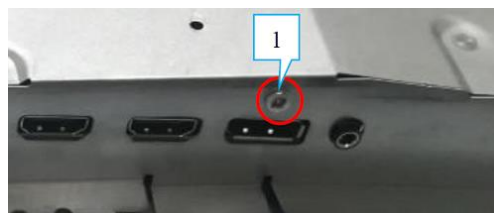
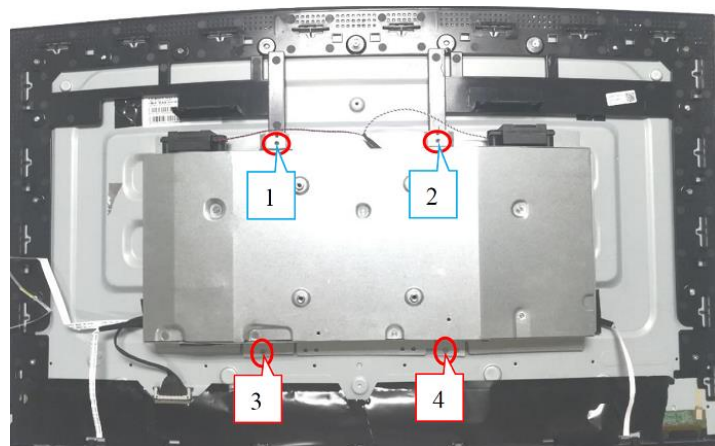
3. Disassembly SOP

<p>Put the monitor on a flat surface (Put the EPE on under the monitor)</p>	
<p>Use the C/D disassembly tool to release Rear cover hook from disassemble hole on bottom</p>	  <p>Disassemble-hook</p>
<p>Unplug the connectors</p>	  

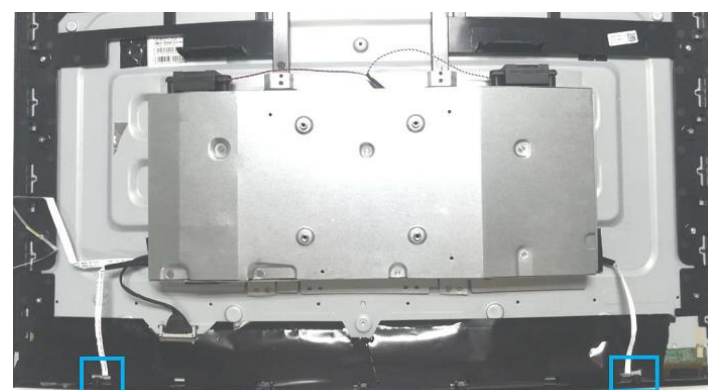
Remove All tape and foil



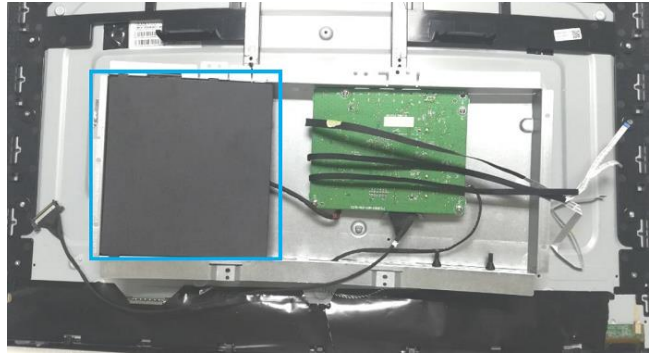
Remove All screw.
Tool : Screwdriver #2



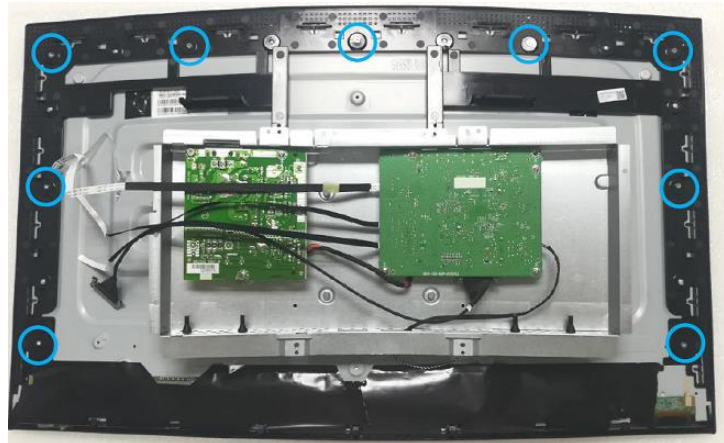
Unplug the connectors.



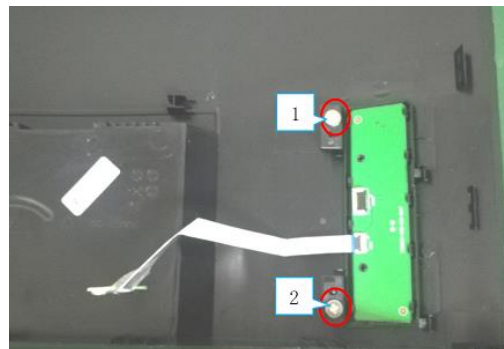
Take out the Mylar.



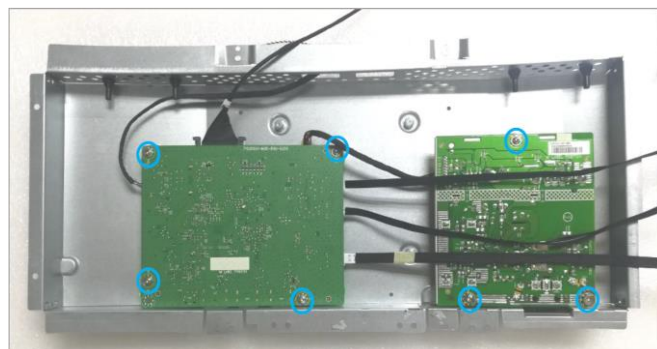
Remove All screw.
Tool : Screwdriver #2



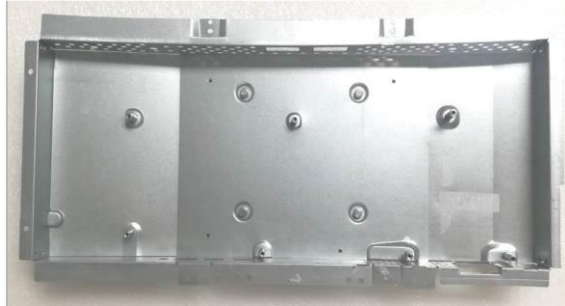
Remove All screw.
Tool : Screwdriver #2



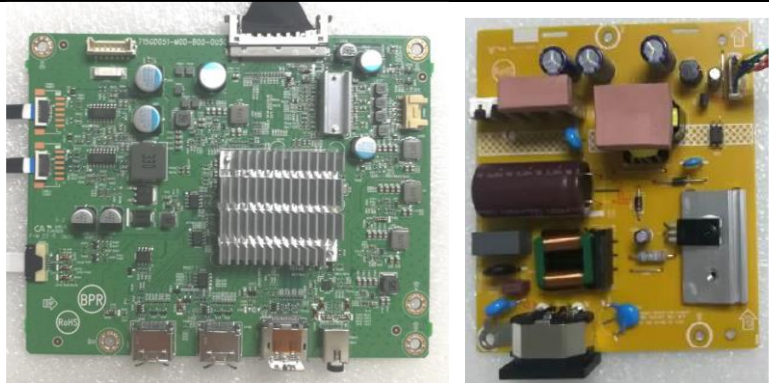
Remove All screw.
Tool : Screwdriver #2



Take out PCB and Peel off all mylar.



The Main board and the Power board



The Panel

