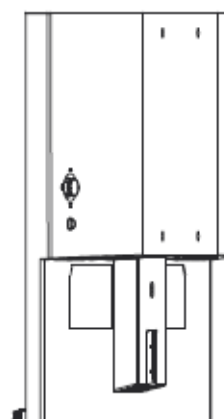
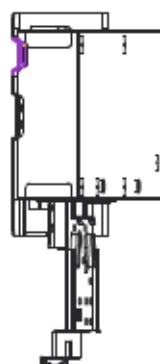
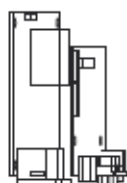
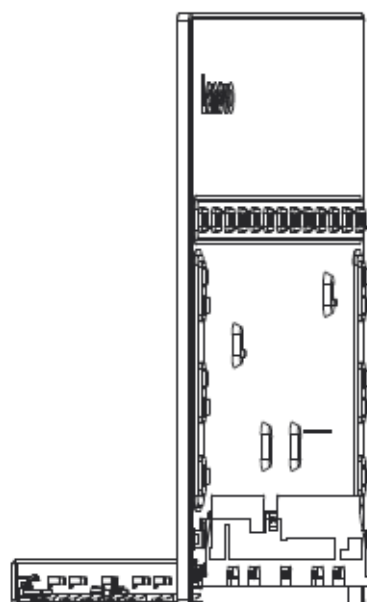


L22e-40 Simplified service manual for dismantling

Model Name: Lenovo L22e-40



Exploded Diagram



1. Precaution


Please read the precaution as follows to prevent any damages to the LCD Monitor.

Make sure all power connector is removed. Be sure that the LCD Monitor is in power off status.

<p>Prepare soft cloth and sponge as working platform to place LCD monitor horizontally.</p>	
<p>Hold LCD by the side carefully and DON'T touch or press panel directly.</p>	

2. Appropriate tools

Select the Appropriate tools for disassembly and re-assembly.

Phillips screwdriver (#2)	
spacer screwdriver	
C/D disassembly tool	
Gloves or soft cloth	

3. Disassembly SOP

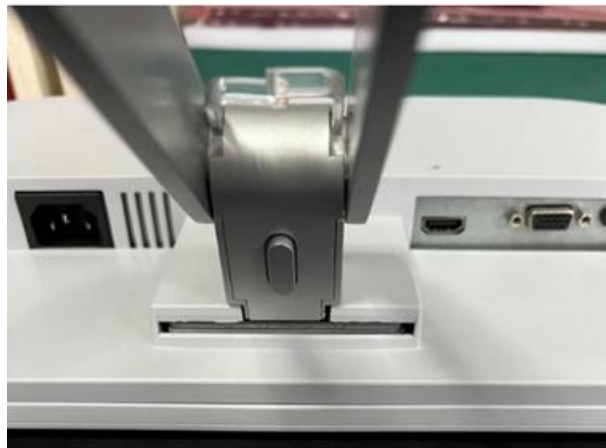
Put the monitor on a flat surface
(Put the EPE on under the monitor)



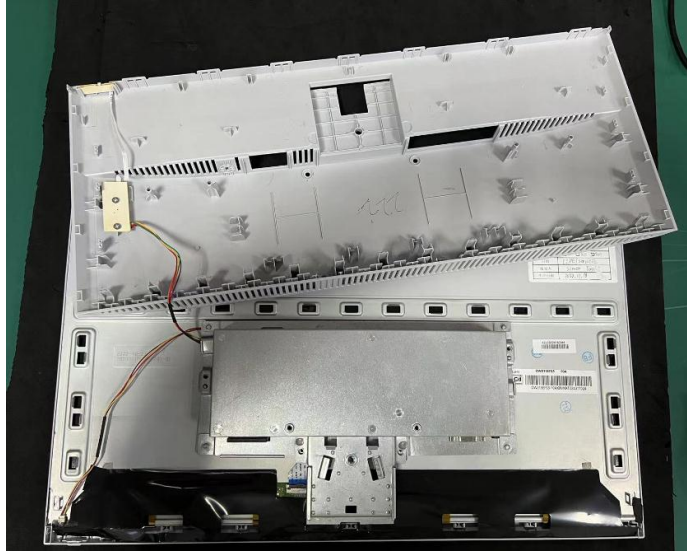
Remove the screw * 1pcs
Tool : Screwdriver #2



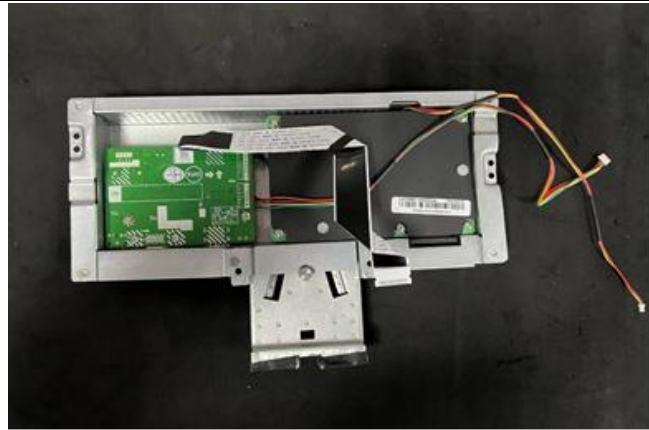
Pull out stand



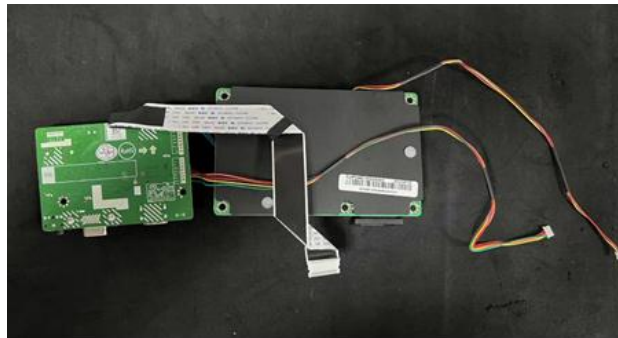
Remove the back cover



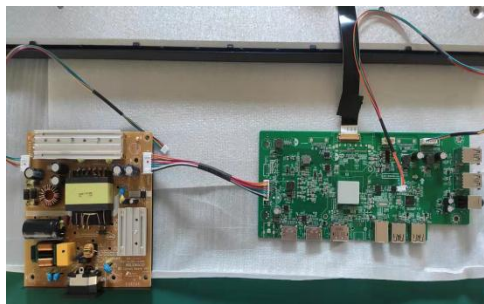
Remove All tape and foil
Unplug light bar line and LVDS
line



Remove shield
Remove the screw of shield and
the Wire
Remove the board



Take out the PCB board



Remove the middle frame.
The panel

