

# **Dismantling information**

The document is intended for use by end-of-life recyclers or treatment facilities. It provides the basic instructions for the disassembly of LG products to remove components and materials requiring selective treatment.

## **Product Identification**

<b>Type of Product</b>	<b>OLED TV</b>
<b>Model name</b>	<b>OLED42/55/65/77C5 Series. This document covers derivation model OLED42/55/65/77C5###, which has same conceptual design and dismantling process.</b>

Displays must be stored in accordance with the requirements stipulated in Appendix VII (1) or (2) of Directive 2012/19/EU and must, amongst other things, be stored in a weatherproof manner. Containers with covers must be used when storing and transporting the Displays.

## **Contents**

- 1. Materials and components for Selective Treatment**
- 2. Tools Required**
- 3. Product Dismantling Process**




# 1. Materials and components for Selective Treatment

Displays may contain hazardous substances like Pb which are covered by exemptions under the RoHS directive. However, the majority is present in the PCB assembly. In order to reduce emissions as much as possible, a complete disposal of the old appliance is required. This treatment may only be performed in authorized handling plants.

Materials and components	Notes	Included
Printed Circuit Boards (PCB) or Printed Circuit Assemblies (PCA)		O
Batteries	For Remote control	O
	Internal coin batteries	-
Mercury containing components	display backlights	-
Liquid Crystal Displays (LCD) with a surface greater than 100 square cm (or OLED module for OLED TV)	LCD Module, LED Module, OLED Module (LED or OLED maybe used depending on model)	O
Capacitors / condensers (Containing PCB / PCT)		-
Electrolytic Capacitors / Condensers measuring greater than 2.5 cm in diameter or height		O
External electric cables cords	Power cord	O
Gas Discharge Lamps		-
Plastics containing Brominated Flame Retardants	Plastic of speaker, cable connector, fan (depend on model)	O
Components and waste containing asbestos		-
Components, parts and materials containing refractory ceramic fibers		-
Components, parts and materials containing radioactive substances		-

## 2. Tools Required

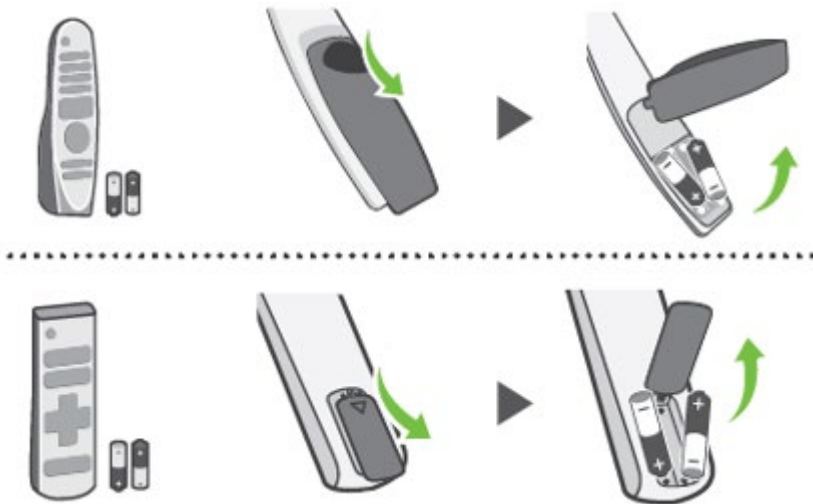
List the type that would typically be used to disassemble the product to a point where components and materials requiring selective treatment can be removed.

Tool Description	Tool information
Screw driver	 
Nipper	

## 3. Product Dismantling Process

### 1) Batteries

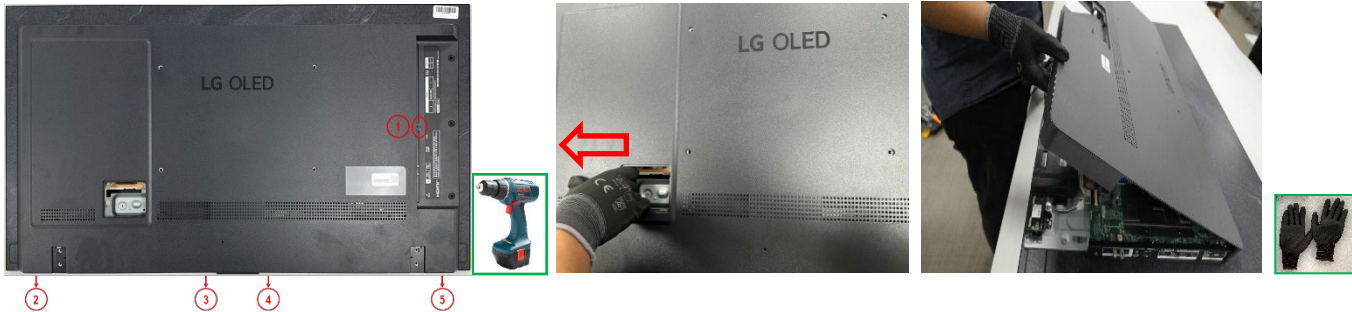
Batteries can easily be removed from the remote control once the back cover of the remote control has been removed.



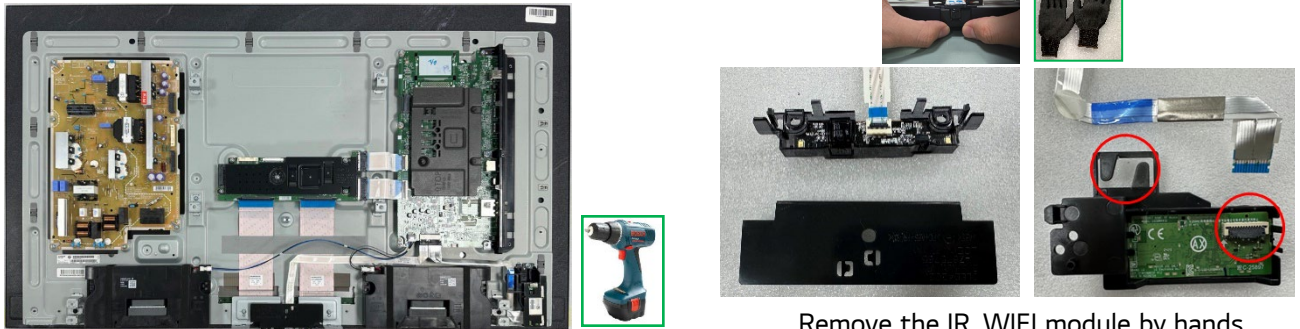
# 3. Product Dismantling Process

## 2) PCBs and WiFi,IR Module (Only for 42C5)

The back cover of the display can easily be removed by screw driver & hand.



Once removed, this will expose the accessible electronic units (PCBs) which can now be easily removed with hand and screwdriver.



Remove the IR, WIFI module by hands

Next, Remove 2Pole/VESA Supporters and IR Braket by hand and screw driver.

Remove the 2Pole Supporter



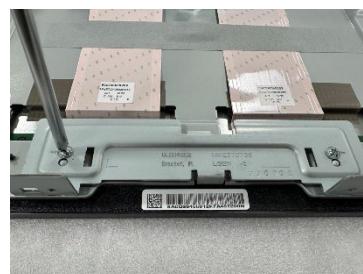
Remove the VESA Supporter



Remove the speaker units. (L/R)



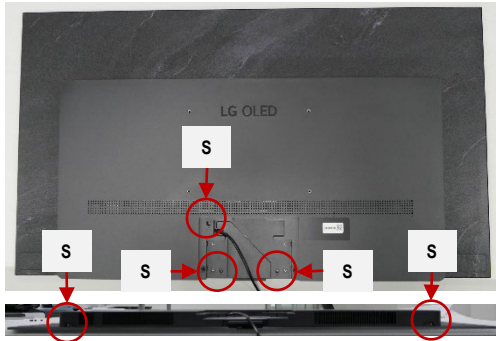
Remove the IR Bracket. (L/R)



# 3. Product Dismantling Process

## 2) PCBs and OLED Module (Only for 55/65/77C5)

The back cover of the display can easily be removed by hand and screwdriver.

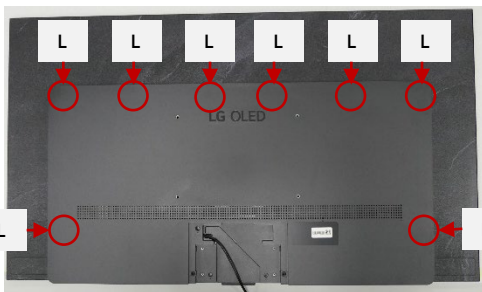


1. After removing the 5 screws, separate the back cover from the module according to the guide below.

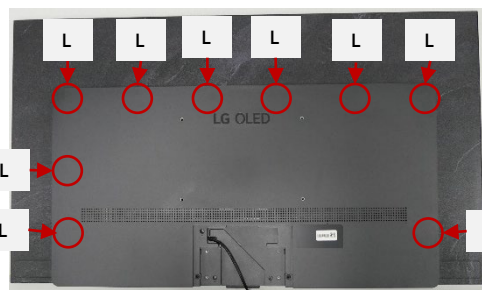
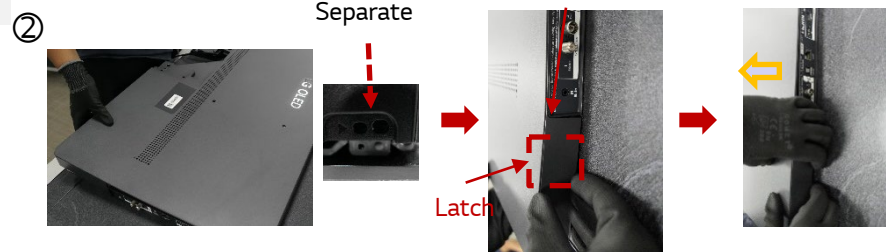
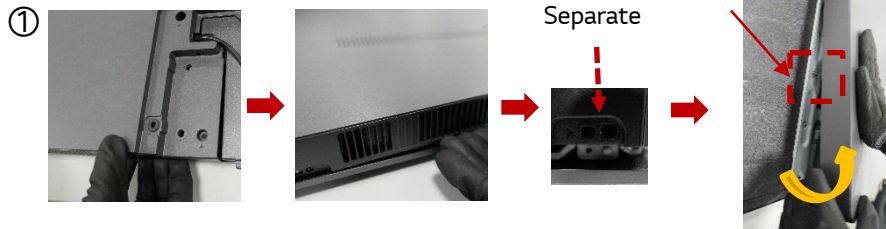
① Put your hand in the side of the IR bracket to release the lower left protrusion, then lift it up and separate the left side latch

② In the same way as in “①”, after releasing the fixing of the lower right protrusion, support the Side AV area of cover rear with your hands and lift it up and separate the right-side latch (Caution, Side AV area of Cover Rear is easily bended when it is separated.)

③ Remove the back cover by lifting it from the bottom with both hands.



Latch : 8ea (55/65)



Latch : 9ea (77)

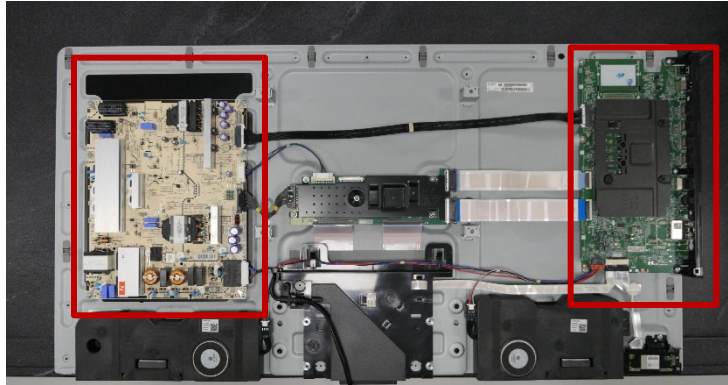
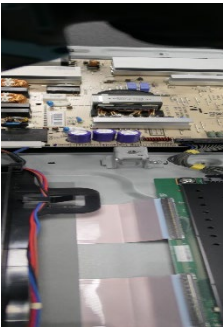




# 3. Product Dismantling Process

## 2) PCBs and OLED Module (Only for 55/65/77C5)

Once removed, this will expose the accessible electronic units (PCBs) which can now be easily removed with hand and screwdriver.



OLED (together with their casing) is only left after all other parts like electronic units have been removed.

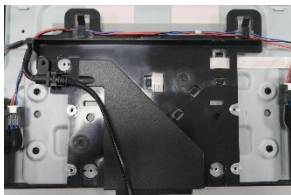
Remove the speaker units.



Remove the Metal with hand and screwdriver.



Remove the IR, WIFI module



## **3. Product Dismantling Process**

### **3) Plastic containing Brominated Flame Retardants**

Plastic of speaker, fan, cable connector may contain brominated flame retardants, remove them all using a common available tool.

### **4) OLED Module**

OLED (together with their casing) is only left after all other parts like electronic units have been removed.

OLED module



55/65/77C5



42C5

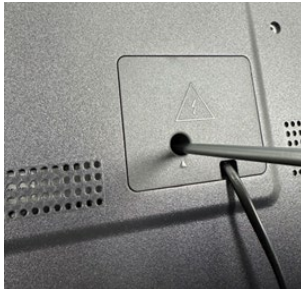


## 3. Product Dismantling Process

### 5) Power cord

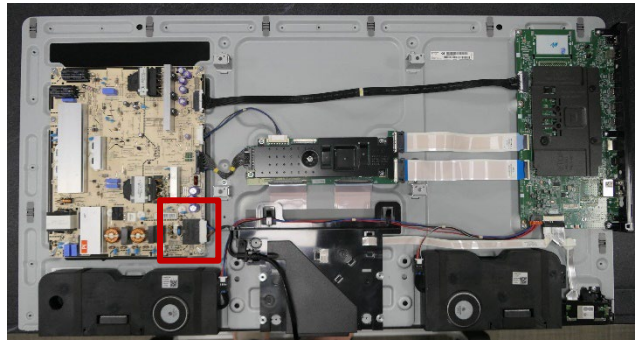
(Only for 42C5)

Attached type



(Only for 55/65/77C5)

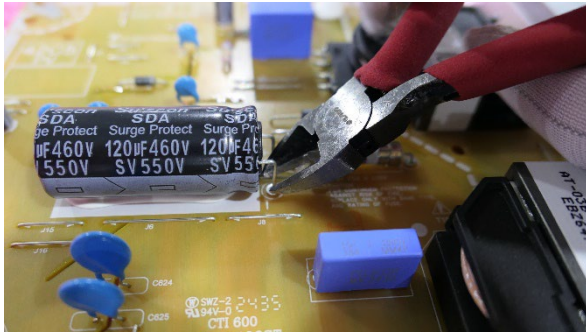
Attached type



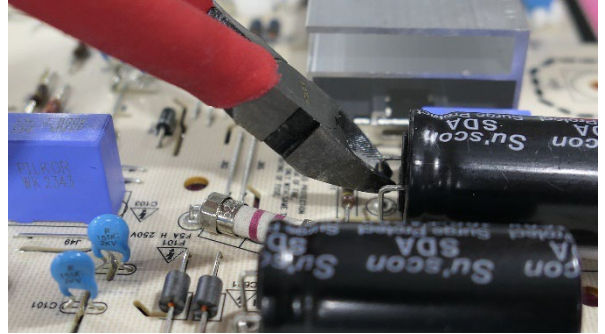
A Power cord plugged into the back of the display can be removed after Back cover be removed .

## 3. Product Dismantling Process

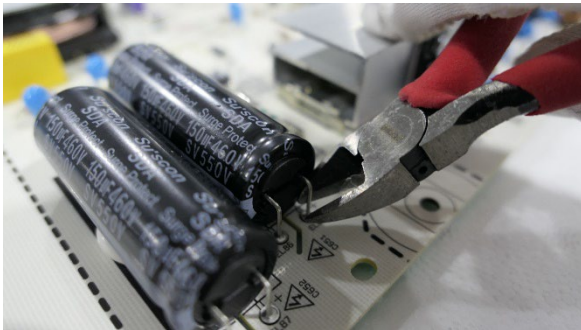
### 6) Capacitors > 25 mm



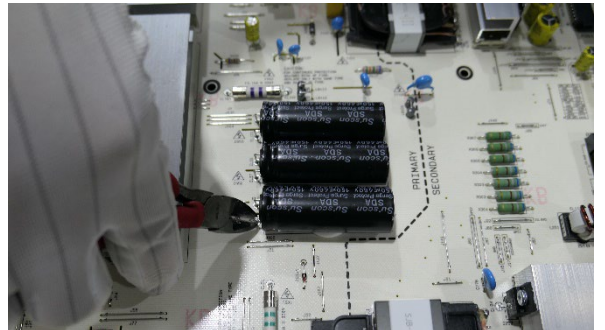
**(42C5)**



**(55C5)**



**(65C5)**



**(77C5)**

Capacitors > 25 mm are located in the power supply units and can be removed by nipper