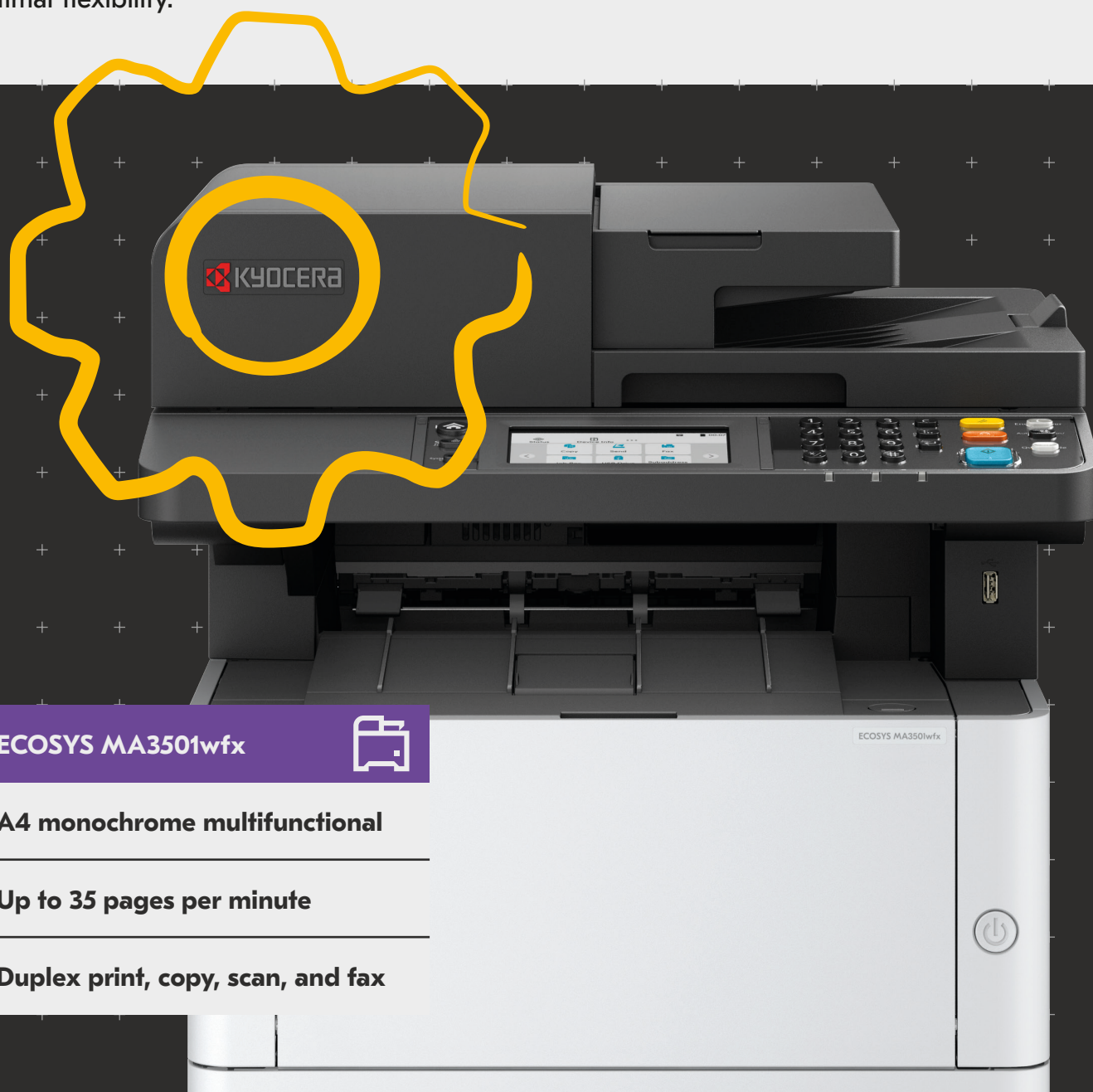


A versatile solution for diverse business needs

Offering super-fast printing speeds and excellent output quality, the ECOSYS MA3501wfx enhances productivity while keeping printing costs remarkably low. This all-rounder is designed to keep up with the demands of large organisations, supporting Wi-Fi Direct for optimal flexibility.

**ECOSYS MA3501wfx****A4 monochrome multifunctional****Up to 35 pages per minute****Duplex print, copy, scan, and fax**

Specifications

GENERAL

KYOCERA ECOSYS Laser Monochrome Multifunctional
Operation panel: 10.9 cm (4.3 inch) full-colour touch panel display
Type: Desktop
Engine speed:
Up to 35 A4 pages per minute simplex (single-sided),
Up to 17.5 A4 pages per minute duplex (both sides)
Resolution: 1200 x 1200 dpi (print),
600 x 600 dpi (scan/copy)
Recommended Print Volume: Average 2,000 pages per month
Maximum Print Volume: 50,000 pages per month
Maximum Life: 170,000 pages or 5 years
Recommended Scan Volume: Average 830 pages per month
Warm-up time: Approx. 29 seconds
or less (after switching on)
Time to first print: Approx. 6.4 seconds or less
Time to first copy: Approx. 7.4 seconds or less (DP),
Approx. 6.4 seconds or less (Platen)
CPU: ARM Cortex-A53, 1.0GHz
Memory: Standard 2GB
Standard interface: USB 2.0 (Hi-Speed), Network
(10BASE-T/100BASE-TX/1000BASE-T), WLAN
(802.11a/b/g/n/ac, Wi-Fi Direct, 2.4/5 GHz), USB host
for USB flash memory, slot for optional SD/SDHC card
Integrated accounting: 100 department codes
Dimensions (W x D x H):
Without packaging: 417 x 412 x 437 mm,
With packaging: 555 x 541 x 572 mm
Weight:
Without packaging: Approx. 19.5 kg (with bundled
toner), Approx. 19.0 kg (without bundled toner)
With packaging: 24 kg
Power source: AC 220 ~ 240 V, 50/60 Hz
Power consumption:
Printing/Copying: 534.4 W
Ready mode: 11.8 W
Sleep-mode: 0.4 W
Noise (sound pressure level: ISO 7779/ISO 9296):
Printing/Copying: 52 dB (A)
Quiet mode: 48 dB (A)
Stand-by: 29 dB (A)
Safety standards: TÜV/GS, CE
This unit is manufactured according to ISO 9001 quality
standard and ISO 14001 environmental standard

PAPER HANDLING

All paper capacities quoted are based on paper thickness of
max. 0.11 mm. Please use paper recommended by KYOCERA
under normal environmental conditions.
Input capacity: Multi-purpose tray: 100 sheets,
60–220 g/m², A6, A5, A4, custom (70 × 148 – 216 × 356 mm).
Standard universal paper cassette: 250 sheets, 60–163 g/m²,
A6, A5, A4, custom (105 × 148 – 216 × 356 mm).
Max. input capacity with options: 850 sheets.
Duplex: Standard duplex unit, two-sided printing,
60–220 g/m², A5, A4, custom (140 × 210 – 216 × 356 mm).
Document Processor: max. 50 originals, 50–160 g/m²,
A6, A5, A4, custom (100 × 148 – 216 × 356 mm).
Output capacity: Max. 150 sheets (face-down) with paper
full detection

PRINT FUNCTIONS

Controller language: PRESCRIBE
Emulations: PCL 6 (Se, XL), KPDL3 (PostScript 3 compatible),
Lineprinter, IBM Proprinter, Epson LQ-850, PDF Direct
Print 1.7, 2.0, XPS/Open XPS Direct Print, TIFF Direct Print

Operating systems: All current Windows operating
systems, MAC OS X Version 10.9 or higher, Chrome OS,
as well as other operating systems on request.
Fonts/barcodes: 93 outline fonts (PCL6, KPDL3), 4
fonts (Calibri), 4 fonts (Cambria), 1 Bitmap font, 45 one-
dimensional barcodes (e.g. EAN-8, EAN-13, EAN-128), as
well as support for two-dimensional barcodes PDF417 under
PRESCRIBE (PCL and other barcodes available an option)
Print features: "Proof and hold", Job storage, Quick
copy, Private print, Data storage method with PIN code or
password, Internet printing IPP 1.0, E-mail printing, WSD
Print, EcoPrint - toner save mode, AirPrint, Mopria, Microsoft
Universal Print, Job batch output, Image Refinement, Pull
print, VPSX, IPP PIN Print, Kyocera Cloud Access, optional
Kyocera Cloud Print and Scan selected function integration
Security features: Secure Boot, Run-time Integrity
Check, Allowlisting, TLS 1.3, IPsec, HTTPS, SNMPv3,
S/MIME, "Confidential printing" with PIN code request,
encrypted PDF direct printing, Security Watermark,
electronic PDF signature, IPP over TLS, WSD, local and
network authentication, Windows authentication (NTLM
v2, Kerberos), Restriction of the user group through
user login administration, IP filtering, port number
restriction, blocking of interfaces, Security Quick Setup,
Administrator Authentication on Firmware Update, SIEM
Support (SysLog), SCEP, OCSP/CRL, Wi-Fi Certified
WPA3, optional TPM (Trusted Platform Module)
Mobile printing support: KYOCERA Mobile Print app for
iOS and Android, AirPrint, Mopria, Microsoft Universal Print,
Wi-Fi Direct

COPY FUNCTIONS

Max. original size: A4/Legal
Continuous copying: 1–999
Zoom range: 25–400% in 1% steps
Preset magnification ratios: 7 Reductions/5 Enlargements
Image adjustments: Text + Photo, Photo, Text, Chart/Map,
Printed document
Features: Multiple copies from memory, electronic sorting,
blank page skip, line skip, duplex copy, 2-in-1 and 4-in-
1 function, split mode, DP auto-cropping, ID card copy
supporting auto crop, folded corner detection, continuous
scan, priority override, Eco Print (copy) - toner save mode,
specific color removal, border erase, auto paper selection,
manual and auto background density adjustment, manual
and auto reduction / enlargement

SCAN FUNCTIONS

Functionality: Scan to Email, Scan to FTP, Scan to PC (SMB),
TWAIN, WIA, WSD Scan, Scan to USB Host, Distributed
File System (Windows 2012 server or later), eSCL support
(AirPrint, Mopria Scan, Chrome OS)
Scan speed Simplex: 40 ipm (300 dpi, A4, b/w)
23 ipm (300 dpi, A4, colour)
Scan resolution: 1,200 (with TWAIN and
WIA driver), 600, 400, 300, 200 dpi
Max. scan size: A4/Legal
Original recognition: Text, photo, text + photo, light text/
fine line, optimised for OCR
File types: PDF, PDF/A-1, PDF/A-2, high compressed PDF,
encrypted PDF, JPEG, TIFF, (Open) XPS
Compression method: MMR/JPEG
Features: Active Directory support, LDAP over TLS, internal
address book, Multi Sending - simultaneous sending
to email, SMB, FTP and fax, file separation, skip blank
pages, line skip, folded corner detection, continuous
scan, digital signature (PDF, Encrypted PDF), auto color
select, scan resolution, specific color removal, border
erase, manual density adjustment, saturation adjustment,
text readability improvement, DP auto-cropping

FAX FUNCTIONS

Compatibility: Super G3
Modern speed: Max. 33.6 kbps
Transmission speed: Max. 3 seconds (JBIG)
Scanning speed: 2 seconds or less
Address book: 300 entries
Scanning density:
Normal: 8 dot/mm x 3.85 line/mm (200 x 100 dpi)
Fine: 8 dot/mm x 7.7 line/mm (200 x 200 dpi)
Superfine: 8 dot/mm x 15.4 line/mm (200 x 400 dpi)
Ultrafine: 16 dot/mm x 15.4 line/mm (400 x 400 dpi)
Halftone: 256 grey scales
Maximum original size: A4/Legal
Compression method: JBIG, MMR, MR, MH
Memory reception: 256 sheets or more
Features: Network Fax, Memory Reception,
Fax Polling, Duplex Receive, Multiple Scan, Fax
Forwarding, Fax Direct, Scheduled transmission, Sub
address, Fax dedicated paper source, Shared Fax
Driver, text readability improvement, Received Fax
preview function, Unread fax display notification

CONSUMABLES

Average continuous toner yield in accordance with
ISO/IEC 19752
TK-1250 Toner Kit: Microfine toner black for 3,000
pages A4. Capacity of starter toner is 1,000 pages A4.

OPTIONS

PF-1100 Paper feeder (max. 2 units): Max. 250 sheets, 60 -
163 g/m²; A6, A5, A4, custom (105 × 148 mm - 216 × 356 mm)
CB-1100-B Cabinet: Wooden desk with storage capacity
and wheels, approx. 375 x 393 x 510 mm (WxDxH)

SECURITY

UG-33: ThinPrint support
UG-50: TPM (Trusted Platform Module),
additional protection of confidential data
USB IC Card Reader + Card Authentication Kit (B):
Support for various authentication keys available

WARRANTY

1-year warranty as standard¹. KYOCERA guarantees
the drum and developer for 3 years or 85,000 pages
(whichever occurs sooner), provided each device is used
and cleaned in accordance with the service instructions.

KYOCERA LIFE

Up to 5-year on-site warranty extensions
available for product and options.

WHAT'S IN THE BOX:

Main unit, starter toner for 1,000 pages, Quick Guide,
safety instructions, power supply cord, fax cable.

DVD with drivers, software and user manual not
included. Computer with internet connection
required to download drivers and software.

¹The device is not designed to achieve the specified volumes in
continuous operation. The maximum volumes relate to the use of the
print or scan unit and include their use for the printing, copying and
scanning functions. Note: In this context, a copied page corresponds to a
scanned and a printed page.

²Optional SD/SDHC memory card is required.

³Depending on the country.

ECOSYS stands for ECOlogy, ECONomy and SYStem printing. With their long-
life components, ECOSYS devices are designed to maximise durability and
minimise the total cost of ownership with regard to maintenance, administration
and consumables. The cartridge-free system means that only the toner has to
be replaced regularly. The modular design concept allows you to add workflow
enhancing functions as required. Integrated system software provides long-term
cross network compatibility. KYOCERA's long-life components cost you and the
environment less.



KYOCERA Document Solutions Europe Management B.V.
Beechavenue 27, 1119 RA, Schiphol-Rijk
Tel +31 (0) 20-654-0000 – Fax +31 (0) 20-653-1256
www.kyoceradocumentsolutions.eu – info@deu.kyocera.com



*KYOCERA Document Solutions does not warrant that any specifications mentioned will be error-free.
Specifications are subject to change without notice. Information is correct at time of going to press.
All other brand and product names may be registered trademarks or trademarks of their respective holders and are hereby acknowledged.

KYOCERA Document Solutions Partner

FEB2025MA3501wfx/VER1.0

kyoceradocumentsolutions.eu