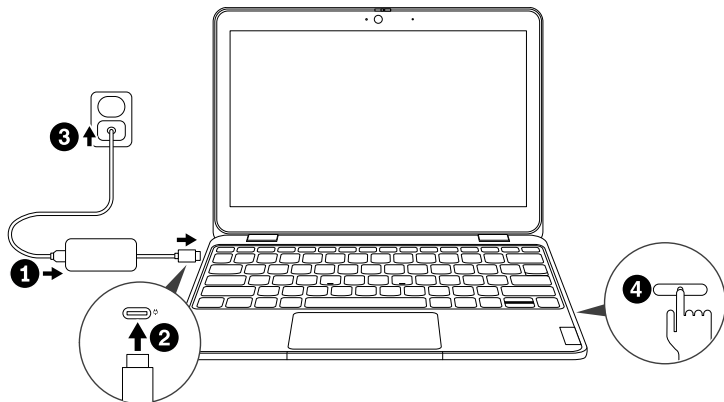


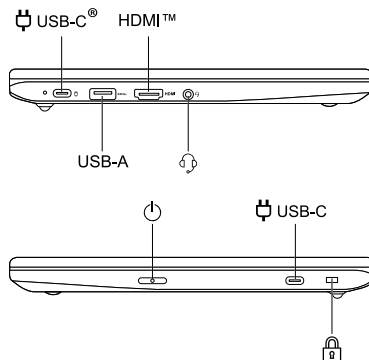
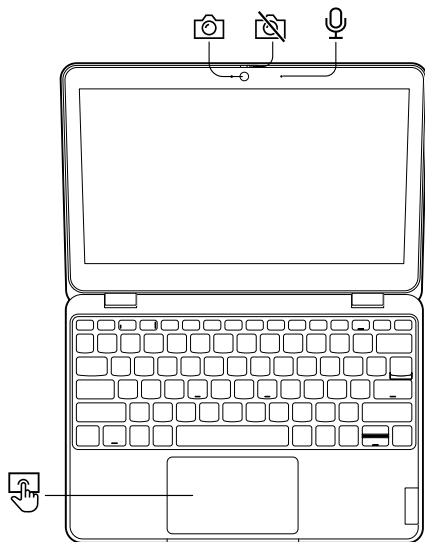
Lenovo 100w Gen 5
Lenovo 300w 2-in-1 Gen 5
Lenovo 500w 2-in-1 Gen 5

Get started

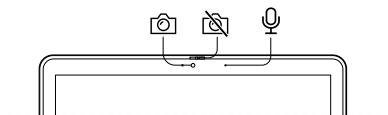


* For selected models

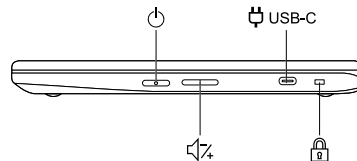
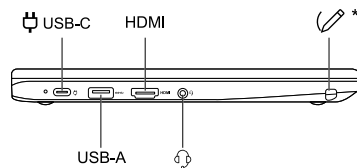
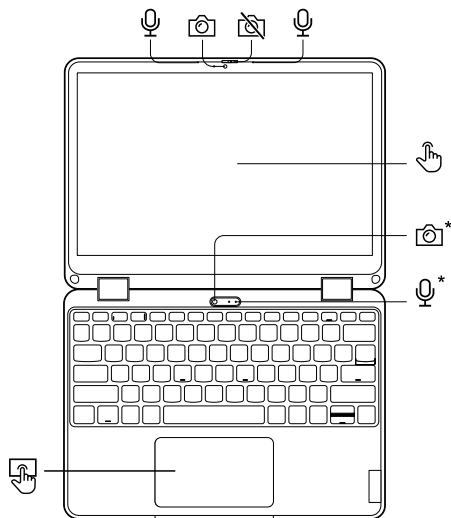
Lenovo 100w Gen 5



Lenovo 300w 2-in-1 Gen 5

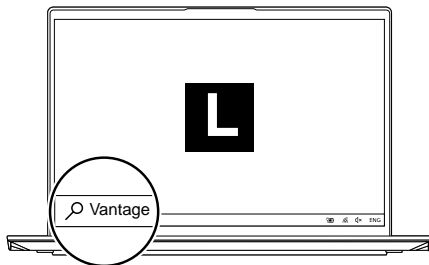


Lenovo 500w 2-in-1 Gen 5



Lenovo Commercial Vantage*

Access Commercial Vantage to adjust device settings and check for system updates.



[English]

USB transfer rate

Read the statement on USB transfer rate in the *User Guide*. To access the *User Guide*, go to <https://pcsupport.lenovo.com>.

Specific absorption rate (SAR)

YOUR DEVICE MEETS INTERNATIONAL GUIDELINES FOR EXPOSURE TO RADIO WAVES.

Refer to the following for 10g SAR limit and maximum reported SAR values:

10g SAR limit: 2 W/kg (body-worn SAR); 4 W/kg (limb SAR)

Maximum SAR with 0 mm separation distance:

| Product name | Body-worn SAR value | Limb SAR value |
|--------------------------|---------------------|----------------|
| Lenovo 100w Gen 5 | 0.004 W/kg | 0.004 W/kg |
| Lenovo 300w 2-in-1 Gen 5 | 0.65 W/kg | 0.97 W/kg |
| Lenovo 500w 2-in-1 Gen 5 | 0.714 W/kg | 1.073 W/kg |

For more information about SAR, refer to the *Safety and Warranty Guide* that came with your device.

European Union (EU) / United Kingdom (UK) — radio frequency and power

This radio equipment operates with the following frequency bands and maximum radio-frequency power:

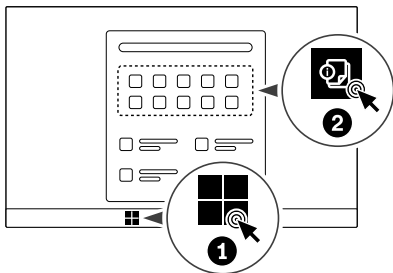
| Technology | Frequency [MHz] / band | Maximum transmit power |
|--|--------------------------|------------------------|
| WLAN 802.11b/g/n/ax Bluetooth BR/EDR/LE | 2400 - 2483.5 | < 20 dBm |
| WLAN 802.11a/n/ac/ax | 5150 - 5350; 5470 - 5725 | < 23 dBm |
| WLAN 802.11a/n/ac/ax | 5725 - 5875 | < 13.98 dBm |
| WLAN 802.11ax | 5945 - 6425 | < 23 dBm |

Note: Not all wireless bands may be enabled depending on your product configuration. Usage of this device is limited to indoor locations in the bands 5150 - 5350 MHz and 5945 - 6425 MHz.

For Decoude Position Only

PN: XXXXXXXXXXXX Printed in China

Access User Guide



First Edition (March 2025)

© Copyright Lenovo 2025.

LIMITED AND RESTRICTED RIGHTS NOTICE: If data or software is delivered pursuant to a General Services Administration "GSA" contract, use, reproduction, or disclosure is subject to restrictions set forth in Contract No. GS-35F-05925.

Lenovo and Lenovo logo are trademarks of Lenovo. The terms HDMI and HDMI High-Definition Multimedia Interface are trademarks or registered trademarks of HDMI Licensing LLC in the United States and other countries. USB-C is a registered trademark of USB Implementers Forum. All other trademarks are the property of their respective owners.



Reduce
Reuse
Recycle

For FSC Mix logo only