

Original Elevate +
Brother Printer Mount

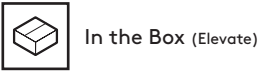
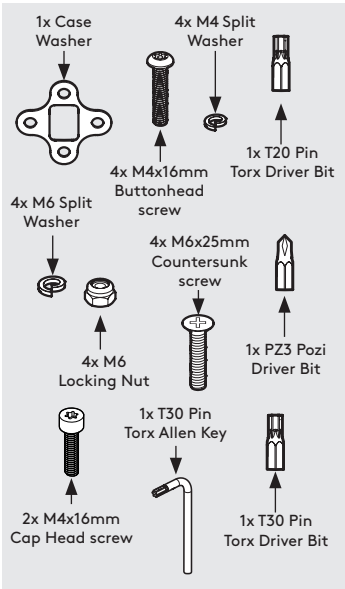
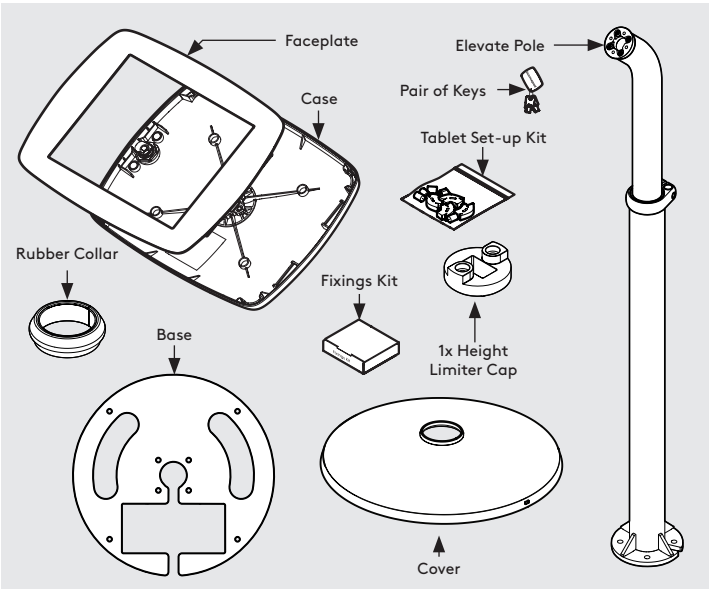
Assembly Instructions

Tools Required:

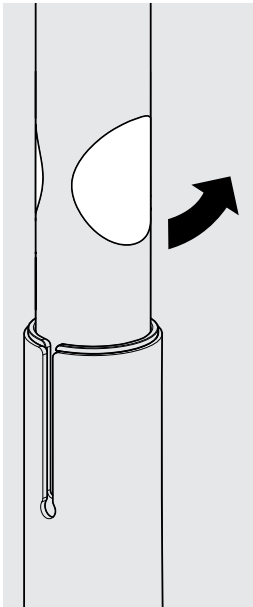
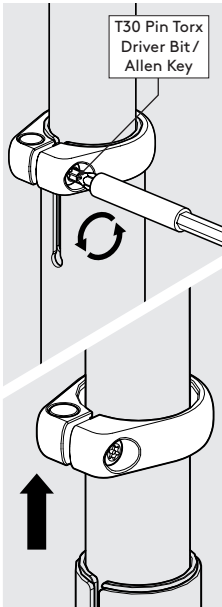
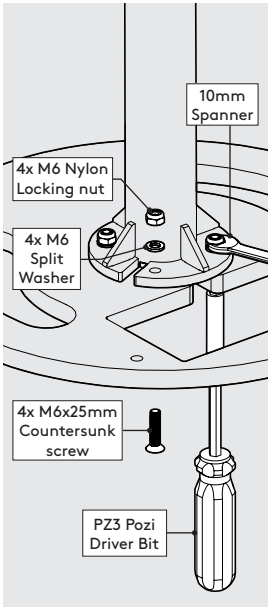
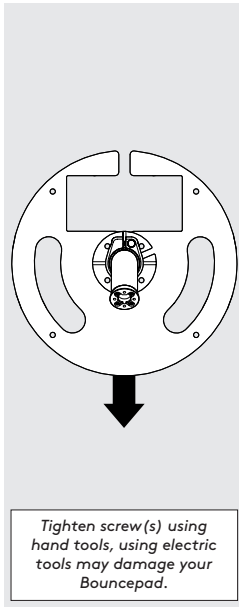
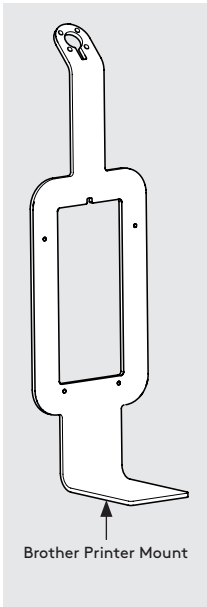
- Socket Driver
- 10mm Spanner *or adjustable spanner

Sheet Code: BP-IM-113_REV0
Release Date: 20/02/2025

Copyright 2025 SpotSpot Ltd. (T/A Bouncepad) all rights reserved. Confidential, no part of this publication may be reproduced or transmitted in any form without the written permission of the copyright holder.



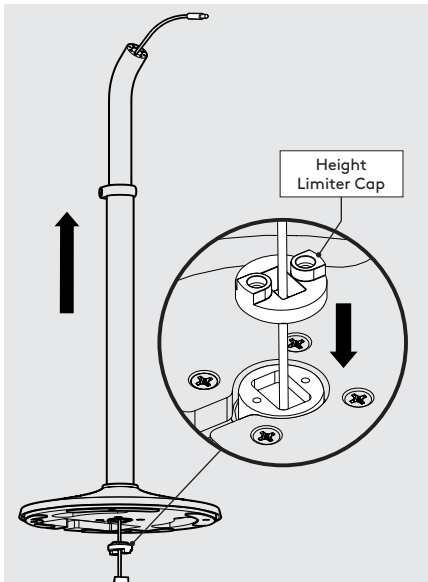
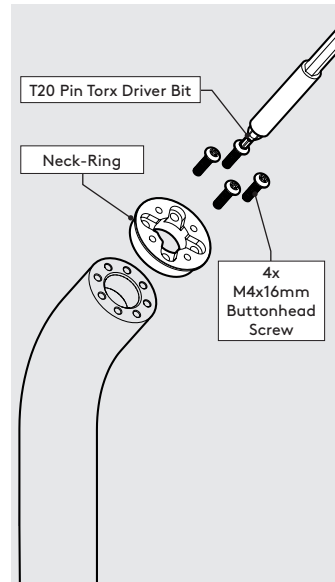
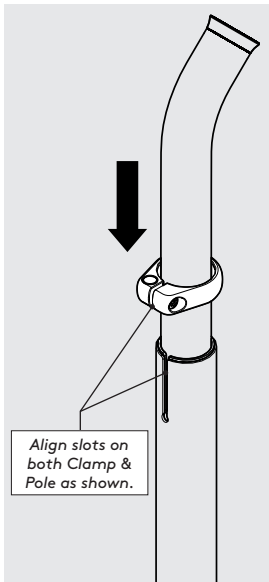
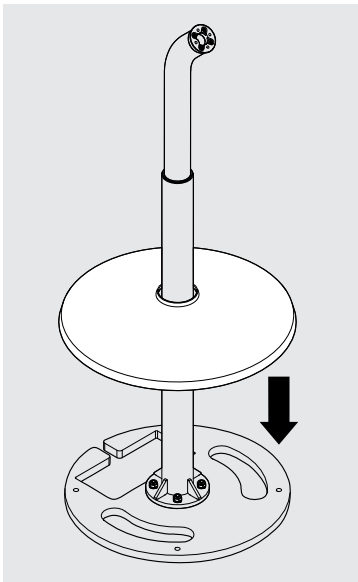
* Due to the modular nature of our product range you may receive additional fixings in the fixings kit



1 Orientate, locate & secure the Elevate Pole to the Base as shown. Ensure that all fixings are installed correctly.

2 Loosen & remove the Clamp.

3 Peel Protective Stickers off the Elevate Pole.

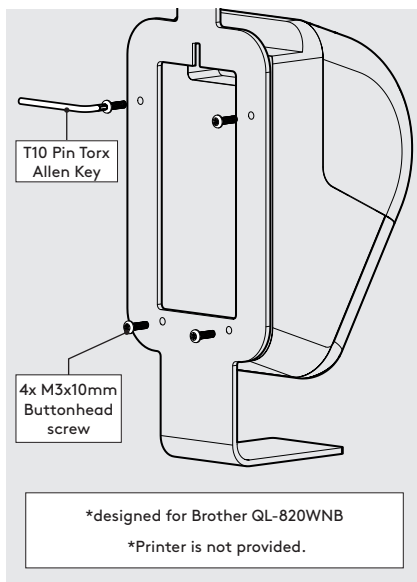


4 Attach the Cover as Shown.

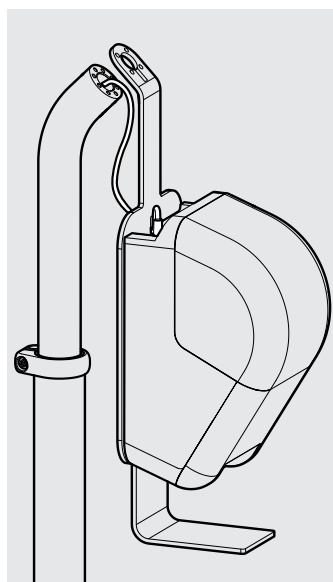
5 Reattach the Clamp without tightening.

6 Remove Neck-Ring using T20 driver bit & Socket Driver

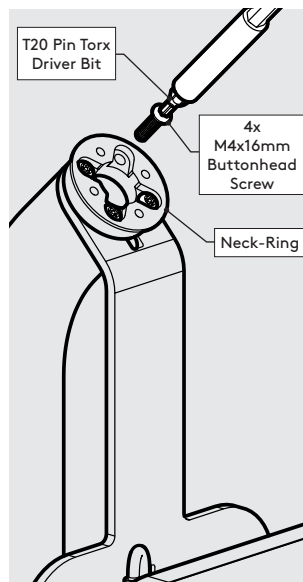
7 Feed the printer's power cable through the Height Limiter Cap & the Elevate Pole.



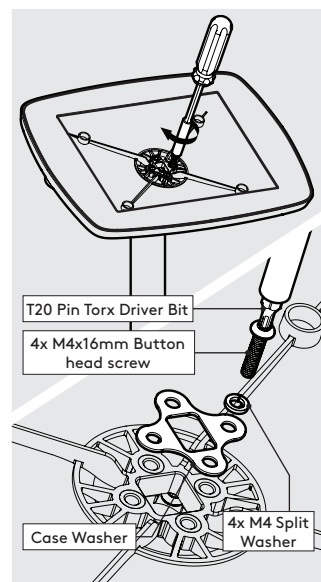
8 Attach the printer to the Printer Mount using M3x10mm Screws



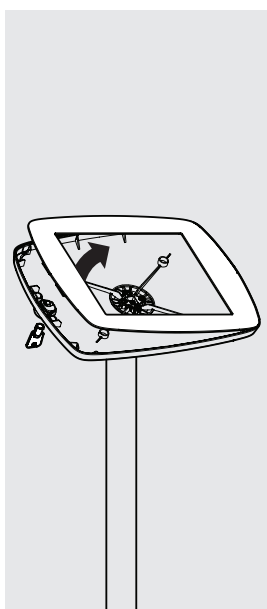
9 Feed power cable through Printer Mount & plug into Printer



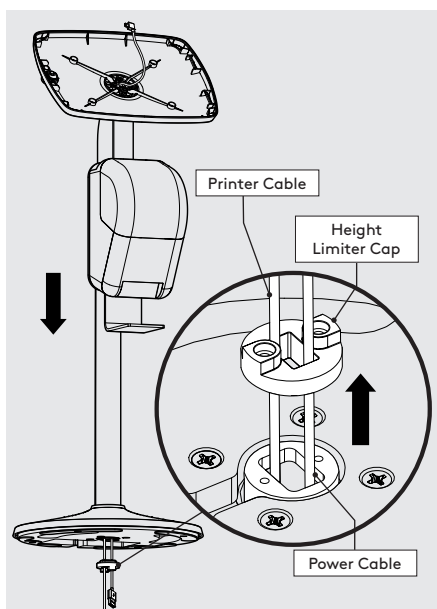
10 Re-attach Neck-Ring using the same fixings.



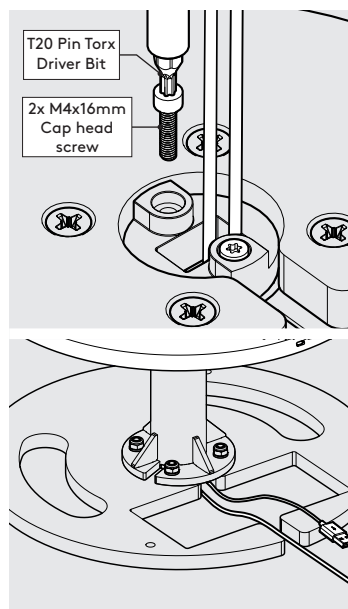
11 Locate & secure the Case onto the Elevate Pole as shown. Tighten by hand.



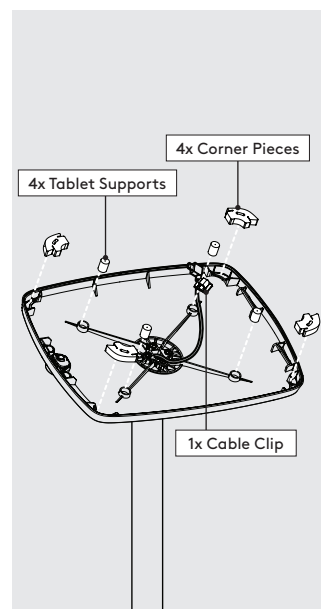
12 Unlock & remove the Faceplate from the Bouncepad Case.



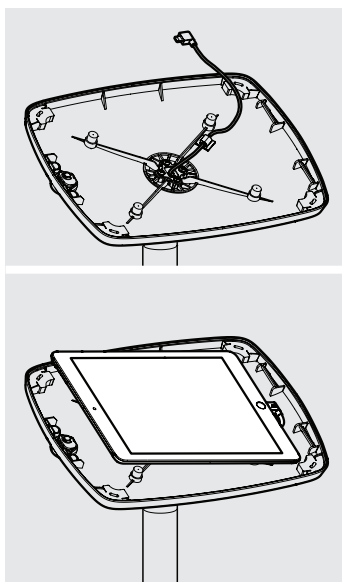
13 Feed the Power Cable through the Case, Elevate Pole & Height Limiter Cap.



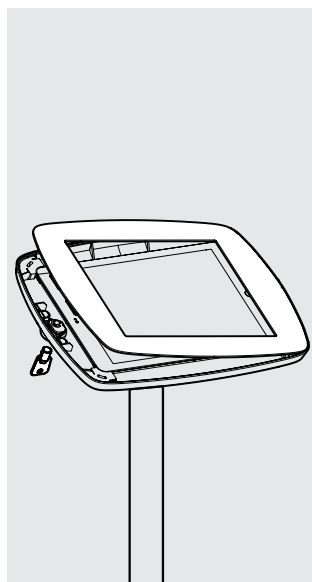
14 Attach the Height Limiter Cap to the Elevate Pole. Feed both Cables through the Base



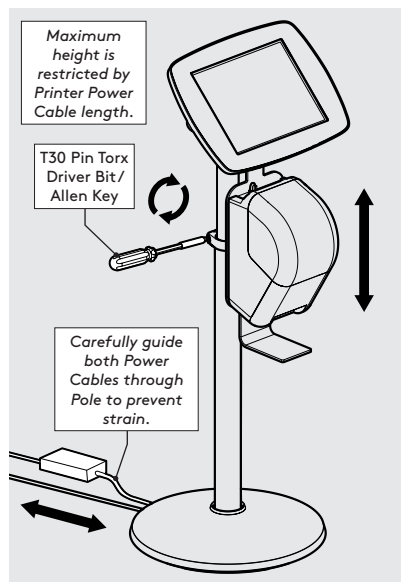
15 Install the Tablet Setup Kit. Each kit is specific per device & case.



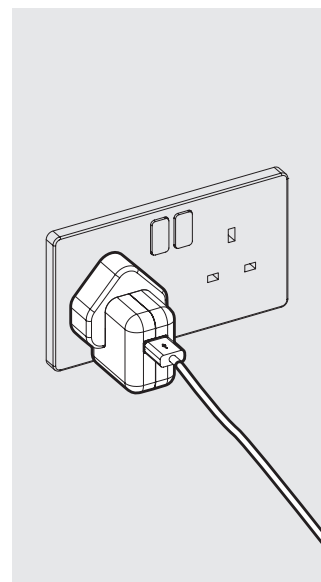
16 Install the Tablet into the Case & connect to Power Cable.



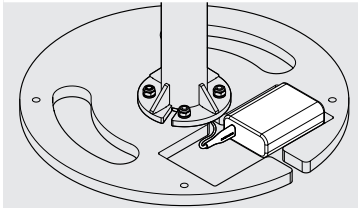
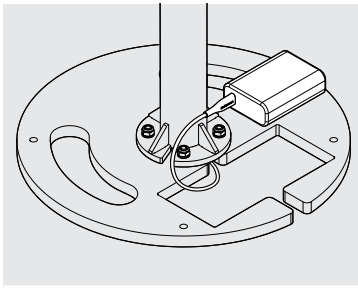
17 Locate & lock the Faceplate to the Case.



18 Adjust the Elevate Pole to your desired height & tighten the Clamp.



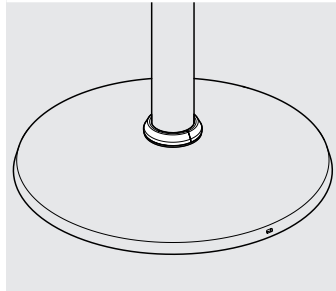
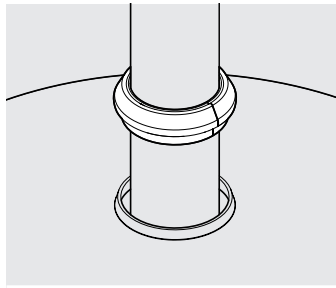
19.1 Connect the Power Cable to its mains power source.



Approximate maximum Battery Pack dimensions: 91mm (length) x 56mm (width) x 25mm (Height).

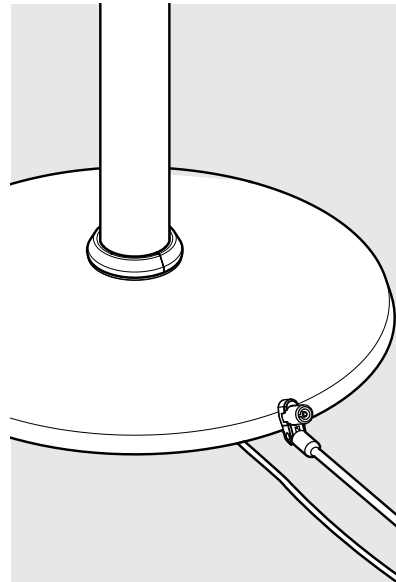
19.2

If installing a Battery Pack, connect the Power Cable & locate into the Base.



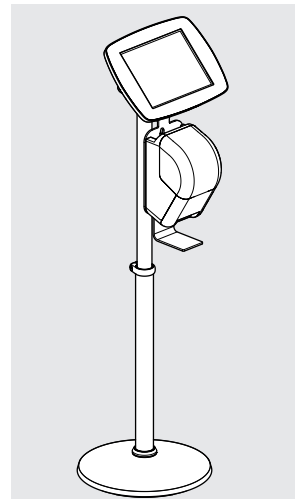
20

With the Cover on the ground, locate & fit the Rubber Collar.



21

Use a Kensington® Microsaver product to tether to a secure object. (refer to your Kensington® instructions for full details)



*We recommend recording the key number so you can purchase additional keys in the future.

22

Installation is now complete.