



The product images are for illustration purposes only. Actual product appearance, ports, keyboard layout, and accessories may vary by model.

- AMD Ryzen AI 7 350 (8C / 16T, 2.0 / 5.0GHz, 8MB L2 / 16MB L3)
- 2x 16GB SODIMM DDR5-5600
- 1TB SSD M.2 2242 PCIe 4.0x4 NVMe
- NVIDIA GeForce RTX 5070 8GB GDDR7, Boost Clock 2347MHz, TGP 115W, 798 AI TOPS
- Windows 11 Pro, English
- Case color - Eclipse Black
- 3Y Legion Ultimate Support with Onsite

Premium Care - Advanced Support from Real People. Real Fast.



REAL PERSON

Choose how you want to reach us - through the phone, chat or email - our expert technicians will take care of you.



REAL FAST

Highly trained technicians will provide you real-time solutions, whatever the issue, on your first contact. If needed, our team will schedule an onsite visit for the next business day.



HASSLE FREE

'Getting started' and 'how-to' assistance for hardware and software. Easy solutions that are simple to reach - that's how Premium Care delivers you the ideal support experience.



PC HEALTH CHECK

Free annual PC Health Check that allows our experts to spot issues before you do so they can resolve them quickly and help you avoid PC problems.

Accidental Damage Protection - Protection of your PC from the unexpected.

Experience shows that a significant portion of devices may be damaged (and not covered under warranty) in the first three years. Lenovo's Accidental Damage Protection service covers accidents beyond the system warranty such as drops, spills, bumps and even electrical surges. Make sure your new device has maximum protection, avoid unplanned costs and get peace of mind.

Base Warranty - Included with the systems you purchase, default 1- or 3-year coverage window.

Warranty Extensions & Upgrades - Service and protection that's right for your circumstances.

- Pick Up & Return Courier
- Onsite Support
- Technician Installed Customer
- Replaceable Unit Service
- International Warranty Upgrade

Recommended Accessories United Kingdom



ThinkPad Bluetooth Presenter Mouse (Aura Edition)

4Y51T62792



Lenovo Analog In-Ear Headphones Gen II Bulk Package (20pcs)

4XD1T54899



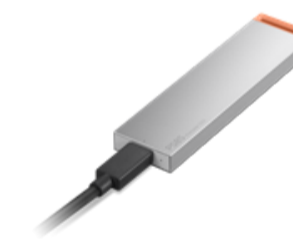
Lenovo Legion 17" Gaming Backpack GB800 (Light Gray)

GX41U39300



Lenovo 245W AC Adapter (Slim tip)-UK

GX21T87706



Lenovo PS8S Portable SSD 4TB

4XB1T91892



Lenovo 310 FHD Webcam Black

GXC1S15024

>> [View More Accessories](#)

PERFORMANCE

Processor

AMD Ryzen™ AI 7 350 (8C / 16T, 2.0 / 5.0GHz, 8MB L2 / 16MB L3)

AI PC Category

AI-Powered Gaming PC

NPU

Integrated AMD Ryzen™ AI, up to 50 TOPS

Graphics

NVIDIA GeForce RTX™ 5070 8GB GDDR7, Boost Clock 2347MHz, TGP 115W, 798 AI TOPS

Chipset

AMD SoC Platform

Memory

2x 16GB SODIMM DDR5-5600

Memory Slots

Two DDR5 SODIMM slots, dual-channel capable

Max Memory^[1]

Up to 32GB DDR5-5600 offering

Storage

1TB SSD M.2 2242 PCIe® 4.0x4 NVMe®

Storage Slot

Two M.2 2280 PCIe® 4.0 x4 slots^[2]

Max Storage Support^[3]

Up to two drives, 2x M.2 SSD • M.2 2242 SSD up to 1TB each

Optical

None

Card Reader

No Card Reader

Audio Chip

High Definition (HD) Audio, Realtek® ALC3287 codec

Speakers

Stereo speakers, 2W x2, audio by HARMAN, optimized with Nahimic Audio

Microphone

2x, Array

Camera

FHD 1080p + IR with E-shutter

Battery

80Wh

Power Adapter

245W Slim Tip (3-pin)

Special Features

AI Chip: LA3

DESIGN

Display

15.1" WQXGA (2560x1600) OLED 1000nits (peak) / 500nits (typical) Glossy, 100% DCI-P3, Dolby Vision®, DisplayHDR™ True Black 600, 165Hz

Touchscreen

None

Screen-to-Body Ratio

OLED models: 90% AAR (active area ratio)

Color Calibration

Factory Color Calibration

Pen

Pen Not Supported

Keyboard

24-Zone RGB Backlit, English

Touchpad

Buttonless Mylar® surface multi-touch touchpad, supports Precision TouchPad (PTP), 75 x 120 mm (2.95 x 4.72 inches)

Dimensions (WxDxH)^[4]

344.9 x 255.35 x 22.50-23.99 mm (13.58 x 10.05 x 0.89-0.94 inches)

Weight^[5]

Around 2 kg (4.4 lbs)

Case Color

Eclipse Black

Case Material

Aluminium (Top), PC-ABS (Bottom)

Surface Treatment

Anodizing Sandblasting

SOFTWARE

Operating System

Windows® 11 Pro, English

Bundled Software

Office Trial + Lenovo® AI Now

CONNECTIVITY

WLAN + Bluetooth^[6]

Wi-Fi® 7, 802.11be 2x2 + BT5.4

WWAN

WWAN Not Supported

Ethernet

100/1000M (RJ-45)

Standard Ports

- 2x USB-A (USB 5Gbps / USB 3.2 Gen 1)
- 1x USB-A (USB 5Gbps / USB 3.2 Gen 1), Always On
- 1x USB-C® (USB 10Gbps / USB 3.2 Gen 2), with USB PD 95-100W and DisplayPort™ 2.1^[7]
- 1x USB-C® (USB4® 40Gbps), with DP 2.1
- 1x HDMI® 2.1, up to 8K/60Hz
- 1x Headphone / microphone combo jack (3.5mm)
- 1x Ethernet (RJ-45)
- 1x Slim tip Power connector

SECURITY & PRIVACY

Security Chip

Firmware TPM 2.0 Enabled

Fingerprint Reader

No Fingerprint Reader

Other Security

- E-shutter
- IR camera for Windows® Hello (facial recognition)

SERVICE

Base Warranty

1-year, Courier or Carry-in

Included Upgrade

3Y Legion Ultimate Support with Onsite

ACCESSORIES

Bundled Accessories

None

CERTIFICATIONS

Green Certifications

- ENERGY STAR® 9.0
- EPEAT™ Gold Registered
- ErP Lot 3
- RoHS compliant

Other Certifications

- TÜV Rheinland® Flicker Free
- TÜV Rheinland® Low Blue Light (Hardware Solution)

MODEL

TopSeller : Yes EAN / UPC / JAN: 198157923041

Announce Date: 2025-06-16 End of Support : 2031-07-16

Note:

[1] The max memory is based on the test results with current Lenovo memory offerings.

[2] The 1st SSD slot supports PCIE 4.0 x4 Lanes, while the 2nd SSD slot supports PCIE 4.0 x2 Lanes.

[3] The storage capacity supported is based on the test results with current Lenovo storage offerings.

[4] The system dimensions may vary depending on configurations.

[5] The system weight is approximate and based on results in Lenovo lab, which varies depending on the source of component, variance of the distribution of each component, and manufacturing process. It may not be the exact weight for each specific model.

[6] Wi-Fi operation (including Wi-Fi 6, Wi-Fi 6E, Wi-Fi 7, etc.) is subject to the regulatory requirements of each country. Bluetooth may operate at a lower version than hardware design depending on the factors such as operating system, driver, etc.

[7] Supports Lenovo protocol for 140W charging but requires a unique Lenovo adapter for operation.

- Please refer to the official [Lenovo store website](#) or contact a local Lenovo sales representative or authorized business partner for current inventory and purchase options.
- Lenovo reserves the right to change specifications without notice.
 - California Electronic Waste Recycling Fee In California, per state law, Lenovo charges an electronic waste recycling fee on this covered device at the time of sale of the product. For more information, go to: <https://www.calrecycle.ca.gov/Electronics/Consumer>