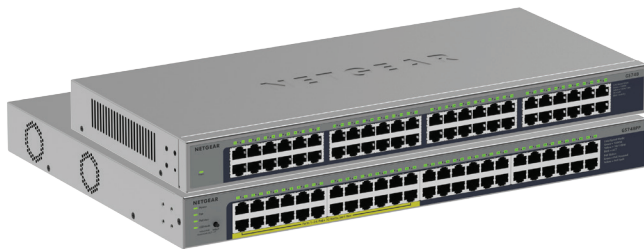


48-port Gigabit Ethernet Unmanaged Switches



Unmanaged Rackmount Gigabit Ethernet Switches for Seamless Network Connectivity

The NETGEAR® Gigabit Ethernet Unmanaged Switch series helps businesses cost-effectively expand their rack-mounted network with a higher port count for more connected devices.

On the GS748PP, all PoE ports fully support PoE/PoE+ and feature Dynamic PoE capability that intelligently optimizes power distribution by detecting each device's actual requirements and allocating resources as necessary over time, rather

than solely based on PoE class reported.

Unlike standard PoE that reserves maximum power based only on PoE class reported per port regardless of usage, Dynamic PoE efficiently reallocates unneeded power back to the switch to power up more devices with the same PoE budget. This makes these switches ideal for deploying a wide range of devices like Wireless Access Points, Pan/Tilt/Zoom and fixed IP cameras, VoIP phones,

security door locks, and virtually any IoT PoE-powered device. In addition, these switches redistribute power where it's needed and maximize your network's capacity without wasting energy.

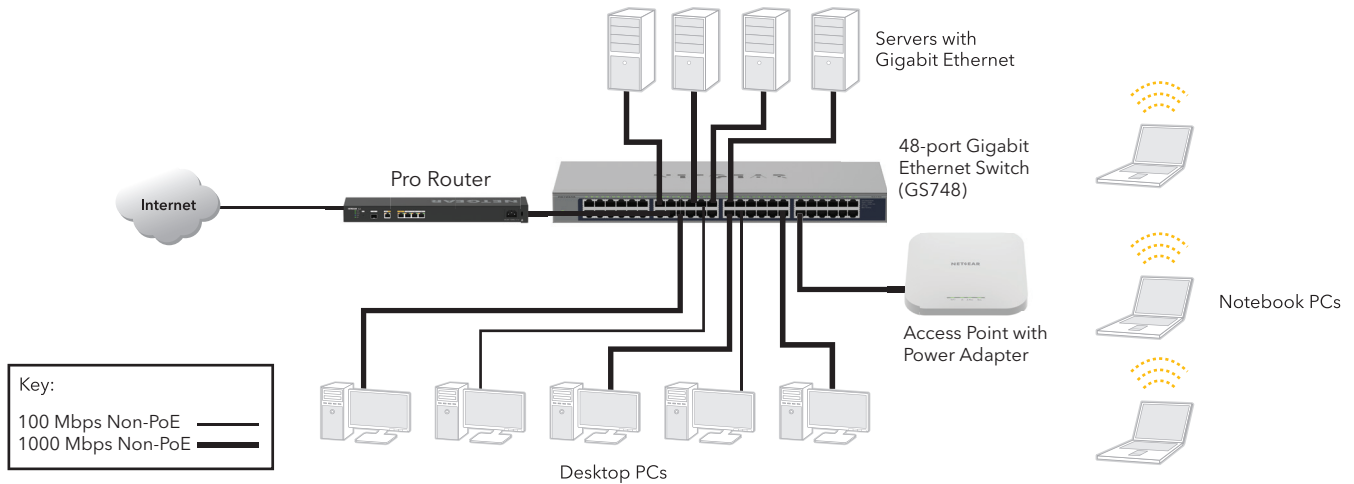
Available with 48 Gigabit copper ports in a durable metal case, these rack-mountable Ethernet switches fit seamlessly on standard 19" racks using the included mounting accessories.

Features and Highlights

- 48-ports deliver up to 2000 Mbps of dedicated, non-blocking bandwidth per port
- Easily combine new or existing 10-, 100- and 1000 Mbps devices within your network
- 802.1p QoS support for prioritizing voice and video in the network
- Jumbo Frame Support up to 12.8 KB
- 48 switched ports provide 96 Gbps of bandwidth for PCs, servers or switches
- Auto Uplink™ automatically adjusts for straight-through or crossover cables
- Plug-and-play begins working as soon as it is powered on
- Secure, durable metal housing includes a Kensington locking slot for theft prevention
- Backed by a NETGEAR Limited Lifetime* Warranty
- Honors TOS/802.1p prioritization
- Up to 50% lower power consumption**
- Auto power-down mode saves energy when port is unused
- Auto green mode detects cable length and adjusts power usage to save energy
- Packaging manufactured with at least 80% recycled materials

48-port Gigabit Ethernet Unmanaged Switches

Example Application



48-port Gigabit Ethernet Unmanaged Switches

| Features | GS748 | GS748PP |
|---|---|---|
| 10/100/1000 Mbps Ports (Auto Uplink) | 48 | 48 |
| Enclosure | Metal | Metal |
| Connector Type | Metal | Metal |
| Form Factor | Rackmount/Desktop | Rackmount/ Desktop |
| LEDs | | |
| Per port | Speed, Link/Activity | Speed, Link/Activity, PoE |
| Per device | Power | Power, PoE Max, Fan |
| PoE Configuration | | |
| 802.3af PoE Ports | NA | 24 |
| 802.3at PoE+ Ports | NA | 24 |
| PoE Max Power Per Port | NA | 30W |
| Total PoE Power Budget** | NA | 380W |
| Power Consumption | | |
| DC Input/Power In | Internal (100-240VAC, 50/60Hz, 3A max) | Internal (110-240VAC, 50/60Hz, 8A max) |
| Power Consumption (Max) | 8.81W | 410W |
| Heat Dissipation (Max and Standby) (BTU/Hr) | 718.2BTU/34.2BTU | 1402.2BTU/34.2BTU |
| Performance Specification | | |
| Bandwidth (Non-Blocking) | 96 Gbps | 96 Gbps |
| Packet Buffer Memory (Dynamically shared across only used ports) | 1.5 MB | 1.5 MB |
| Jumbo Frame Support | 9216 bytes | 12288 bytes |
| Queue WRR (Weighted Round Robin) Ratio | 1:2:4:8 | 1:3:5:7:8:10:12:15 |
| Forwarding Rate (using 64-byte packets) 1000Mbps Port | < 4 µsec | < 4 µsec |
| Latency (using 64-byte packets) - 1000Mbps Port (average) | < 4 µsec | < 4 µsec |
| MAC Address Table Size | 8K | 8K |
| Auto MDI/MDI-X Cable Detection | Yes | Yes |
| Auto-sensing Half/Full Duplex Switched Ports | Yes | Yes |
| Mean Time Between Failures (MTBF) @ 25° C | 1,094,297 hours | 570,972 hours |
| Quality of Service (QoS) | | |
| 802.1P Based (CoS) Supported | Yes | Yes |
| Honors DSCP (DiffServ) Tags | Yes | Yes |

48-port Gigabit Ethernet Unmanaged Switches

| Energy Efficiency | | GS748 | GS748PP |
|--|--|--|---|
| Energy Efficient Ethernet (EEE) IEEE 802.3az compliant | | Yes | Yes |
| Auto Power Down | | Yes | Yes |
| Short Cable Detection | | No | Yes |
| Fan/Fanless | | Fanless | 2 Fans |
| Environmental Specifications | | | |
| Operating Temperature | | 0° to 50° C (32° to 122° F) | 0° to 50° C (32° to 122° F) |
| Humidity | | 10%-90% relative humidity, noncondensing | |
| Altitude | | 3000 M | 3000 M |
| Storage Temperature | | -20° to 70°C (- 4° to 158°F) | |
| Humidity (relative) | | 10%~95%, non-condensing | |
| Physical Specifications | | | |
| Dimensions (W x D x H) | | 440 x 204 x 43 mm (17.3 x 8 x 1.7 in.) | 440 x 310 x 43 mm (17.3 x 12.2 x 1.7 in) |
| Weight | | 3.15 kg (6.95 lb) | 4.56 kg (10.05 lb) |
| Electromagnetic Emissions and Immunity | | | |
| Certifications | CE Mark, FCC Part 15 Class A, IC Class A, RCM, VCCI, KC | CE Mark, FCC Part 15 Class A, IC Class A, RCM, VCCI, KC | |
| | CB, CE LVD, | CB, CE LVD, UL | |
| IEEE Network Protocols | | | |
| <ul style="list-style-type: none">• IEEE 802.3ab 1000BASE-T Gigabit Ethernet• IEEE 802.3u 100BASE-TX Fast Ethernet• IEEE 802.3i 10BASE-T Ethernet• 802.3az Energy Efficient Ethernet• IEEE 802.3x Flow Control• IEEE 802.1p Priority• IEEE 802.3 CSMA/CD | | | |

48-port Gigabit Ethernet Unmanaged Switches

| Warranty and Support * | GS748 | GS748PP |
|-------------------------------------|---|---|
| All Except China and India | NETGEAR Limited Lifetime | NETGEAR Limited Lifetime |
| Power Adapter Warranty | 2-years | 2-years |
| Technical Support (online, phone) | 90 days free from date of purchase | 90 days free from date of purchase |
| ProSUPPORT Category | Category 2 | Category 2 |
| ProSUPPORT OnCall 24x7 Service Plan | PMB0312-10000S (1 yr) | PMB0312-10000S (1 yr) |
| | PMB0332-10000S (3 yrs) | PMB0332-10000S (3 yrs) |
| | PMB0352-10000S (5 yrs) | PMB0352-10000S (5 yrs) |
| Package Contents | | |
| | Unmanaged Gigabit Ethernet switch | Unmanaged PoE++ Gigabit Ethernet switch |
| | Power cord localized to the country of sale | Power cord localized to the country of sale |
| | Rackmount kit | Rackmount kit |
| | Rubber footpads for desktop installation | Rubber footpads for desktop installation |
| | Documentation download flyer | Documentation download flyer |
| Ordering Information | | |
| GS748 | | |
| GS748-100NAS | North America and Latin America | |
| GS748-100EUS | Europe and United Kingdom | |
| GS748PP | | |
| GS748PP-100NAS | North America and Latin America | |
| GS748PP-100EUS | Europe and United Kingdom | |

Actual SKU availability may vary per region. Please check the local website for product availability.

*This product comes with a limited warranty that is valid only if purchased from a NETGEAR authorized reseller, and modifications to product may void the warranty; see <http://www.NETGEAR.com/about/warranty/> for details. 24/7 basic technical support provided for 90 days from purchase date when purchased from a NETGEAR authorized reseller.

**Maximum PoE power supplied is 15.4W per port, but not to exceed 53W total power supplied across all PoE connected devices.

NETGEAR and the NETGEAR Logo are trademarks and/or registered trademarks of NETGEAR, Inc. and/or its subsidiaries in the United States and/or other countries. Other brand names mentioned herein are for identification purposes only and may be trademarks of their respective holder(s). ©NETGEAR, Inc. All Rights reserved.

NETGEAR, Inc., 1-888-NETGEAR (638-4327), E-mail: info@NETGEAR.com, www.NETGEAR.com