



Perfect 3-day beard

Maximum precision, at any length

Trim your hair as short as you desire: the exclusive comb design of the Philips stubble and beard trimmer avoids contact between the blades and your skin. At any length, even 1 mm.

Best performance that feels great

- Contour-following comb for speed and comfort
- Sharper than Titanium*: hardened steel blades for long life
- SteelWave self-sharpening blades for precise results

Create the look you want

- 9 integrated length settings from 1-18 mm

Provides optimal power

- Corded and cordless use for maximum power and freedom

Philips
Stubble and beard trimmer

With zoomring



QT4019/15

PHILIPS



Perfect Stubble



PHILIPS

sense and simplicity

Stubble and beard trimmer
With zoomring

Highlights

9 integrated length settings



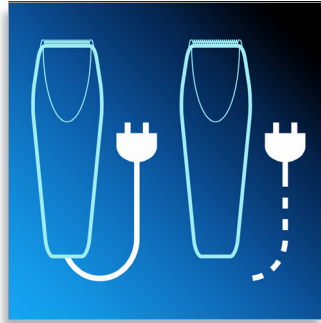
Select and locks your desired length within a versatile range of possible lengths.

Contour-following comb



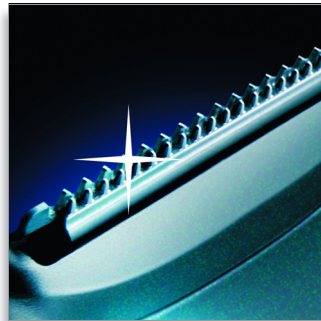
The contour-following comb adjusts to every curve to give fast and comfortable results.

Corded and cordless use



Use your Philips trimmer corded or cordless with the recharged battery for maximum power and freedom.

Sharper than Titanium*



The hardened Inox Steel self-sharpening blades are sharper than Titanium*.

Self-sharpening blades

Revolutionary wave-shaped, self-sharpening blades channel and cut hair for a precise and even result.

QT4019/15

Specifications

Cutting system

- Cutter width: 32 mm
- Number of length settings: 9
- Range of length settings: 1 to 18 mm
- Precision (size of steps): by 2 mm
- Self-sharpening stainless steel blades
- Cutting element: Stainless steel blades
- Comb type: Contour following
- Rounded tips: Skin friendly

Ease of use

- Zoomring: Easily adjust length settings
- Secured length settings
- Charging indicator: 1 LED
- Maintenance free - No Oil need

Power system

- Battery type: NiMH
- Charging time: 10 hour(s)
- Running time: 35 minutes
- Usage: Corded/cordless

Accessories

- Cleaning brush

Service

- 2-year worldwide guarantee

Create the look you want

- Styles: Short beard, Full beard, Stubble look



Issue date 2013-04-24

Version: 3.0.1

© 2013 Koninklijke Philips Electronics N.V.
All Rights reserved.

Specifications are subject to change without notice.
Trademarks are the property of Koninklijke Philips
Electronics N.V. or their respective owners.

www.philips.com