

Hardware Maintenance Manual

Lenovo
LEGION

Lenovo

Legion Pro 7i (16", 9)

First Edition (January 2024)

© Copyright Lenovo 2024.

Contents

About this manualiii

Chapter 1. Safety information1

General safety	1
Electrical safety	1
Safety inspection guide	2
Handling devices that are sensitive to electrostatic discharge	3
Grounding requirements	4
Safety notices (multilingual translations)	4

Chapter 2. General checkout19

What to do first	19
CRU list	20

Chapter 3. Identifying FRUs (CRUs)21

Locate FRUs and CRUs	21
--------------------------------	----

Chapter 4. Removing a FRU or CRU27

Service tools	27
General guidelines	27
Handling thermal interface materials	28
Type, quantity, and areas of thermal interface materials application on the heat sink	28
Areas on the system board where thermal interface materials are applied	29
Remove the lower case	29
Remove the solid-state drive (SSD) plate (L or R)	30
Remove the solid-state drive (SSD)	32
Remove the solid-state drive (SSD) stand off	33
Remove the battery pack	33
Remove the touchpad board cable	34
Remove the speakers	35

Remove the lightingbar (for selected models)	36
Remove the Wi-Fi card	37
Remove the memory module	37
Remove the DC-in bracket	38
Remove the thermal module	39
Remove the CMOS battery	40
Remove the I/O board	41
Remove the system board hook	42
Remove the system board and the I/O board cable	43
Remove or apply the liquid metal	45
Use a Golden Key U1 tool to flash-write key id information	51
Remove the antenna	52
Remove the strip cover	53
Remove the LCD module	54
Remove ceramic keycaps from the replaced upper case (if installed by customers)	56
The keycap kit as a FRU.	56
Remove the upper case	59
Disassemble the LCD module	60
Remove the LCD bezel	60
Remove the hinge cover.	60
Remove the LCD panel	61
Remove the EDP cable	62
Remove the sensor board	63
Remove the camera bracket	64
Remove the microphone rubber.	65
Remove the camera cable	66
Remove the camera board.	66
Remove the LCD cover	67

Appendix A. Label locations.69

Trademarks	lxxi
----------------------	------

About this manual

This manual contains service and reference information for the following Lenovo products.

Model name	Machine type (MT)
• Legion Pro 7 16IRX9H	
• Lenovo Legion Pro 7 16IRX9H D1	83DE
• Lenovo Legion Pro 7 16IRX9H D2	

Important:

- This manual is intended only for trained service technicians who are familiar with Lenovo products.
- Before servicing a Lenovo product, be sure to read all the information under Chapter 1 “Safety information” on page 1.

Chapter 1. Safety information

This chapter presents the following safety information that you need to be familiar with before you service a Lenovo notebook computer.

General safety

Follow these rules to ensure general safety:

- Observe good housekeeping in the area of the machines during and after maintenance.
- When lifting any heavy object:
 1. Make sure that you can stand safely without slipping.
 2. Distribute the weight of the object equally between your feet.
 3. Use a slow lifting force. Never move suddenly or twist when you attempt to lift.
 4. Lift by standing or by pushing up with your leg muscles; this action removes the strain from the muscles in your back. *Do not attempt to lift any object that weighs more than 16 kg (35 lb) or that you think is too heavy for you.*
- Do not perform any action that causes hazards to the customer, or that makes the equipment unsafe.
- Before you start the machine, make sure that other service technicians and the customer's personnel are not in a hazardous position.
- Place removed covers and other parts in a safe place, away from all personnel, while you are servicing the machine.
- Keep your tool case away from walk areas so that other people will not trip over it.
- Do not wear loose clothing that can be trapped in the moving parts of a machine. Make sure that your sleeves are fastened or rolled up above your elbows. If your hair is long, fasten it.
- Insert the ends of your necktie or scarf inside clothing or fasten it with a non-conductive clip, about 8 centimeters (3 inches) from the end.
- Do not wear jewelry, chains, metal-frame eyeglasses, or metal fasteners for your clothing.

Attention: Metal objects are good electrical conductors.

- Wear safety glasses when you are hammering, drilling, soldering, cutting wire, attaching springs, using solvents, or working in any other conditions that might be hazardous to your eyes.
- After service, reinstall all safety shields, guards, labels, and ground wires. Replace any safety device that is worn or defective.
- Reinstall all covers correctly before returning the machine to the customer.
- Fan louvers on the machine help to prevent overheating of internal components. Do not obstruct fan louvers or cover them with labels or stickers.

Electrical safety

Observe the following rules when working on electrical equipment.

Important: Use only approved tools and test equipment. Some hand tools have handles covered with a soft material that does not insulate you when working with live electrical currents. Many customers have, near their equipment, rubber floor mats that contain small conductive fibers to decrease electrostatic discharges. Do not use this type of mat to protect yourself from electrical shock.

- Find the room emergency power-off (EPO) switch, disconnecting switch, or electrical outlet. If an electrical accident occurs, you can then operate the switch or unplug the power cord quickly.
- Do not work alone under hazardous conditions or near equipment that has hazardous voltages.
- Disconnect all power before:
 - Performing a mechanical inspection
 - Working near power supplies

- Removing or installing main units
- Before you start to work on the machine, unplug the power cord. If you cannot unplug it, ask the customer to power-off the wall box that supplies power to the machine, and to lock the wall box in the off position.
- If you need to work on a machine that has *exposed* electrical circuits, observe the following precautions:
 - Ensure that another person, familiar with the power-off controls, is near you.

Attention: Another person must be there to switch off the power, if necessary.

- Use only one hand when working with powered-on electrical equipment; keep the other hand in your pocket or behind your back.

Attention: An electrical shock can occur only when there is a complete circuit. By observing the above rule, you may prevent a current from passing through your body.

- When using testers, set the controls correctly and use the approved probe leads and accessories for that tester.
- Stand on suitable rubber mats (obtained locally, if necessary) to insulate you from grounds such as metal floor strips and machine frames.

Observe the special safety precautions when you work with very high voltages; Instructions for these precautions are in the safety sections of maintenance information. Use extreme care when measuring high voltages.

- Regularly inspect and maintain your electrical hand tools for safe operational condition.
- Do not use worn or broken tools and testers.
- *Never assume* that power has been disconnected from a circuit. First, *check* that it has been powered off.
- Always look carefully for possible hazards in your work area. Examples of these hazards are moist floors, non-grounded power extension cables, power surges, and missing safety grounds.
- Do not touch live electrical circuits with the reflective surface of a plastic dental mirror. The surface is conductive; such touching can cause personal injury and machine damage.
- Do not service the following parts *with the power on* when they are removed from their normal operating places in a machine:
 - Power supply units
 - Pumps
 - Blowers and fans
 - Motor generators
 - Similar units as listed above

This practice ensures correct grounding of the units.

- If an electrical accident occurs:
 - Use caution; do not become a victim yourself.
 - Switch off power.
 - Send another person to get medical aid.

Safety inspection guide

The purpose of this inspection guide is to assist you in identifying potentially unsafe conditions. As each machine was designed and built, required safety items were installed to protect users and service technicians from injury. This guide addresses only those items. You should use good judgment to identify potential safety hazards due to attachment of non-Lenovo features or options not covered by this inspection guide.

If any unsafe conditions are present, you must determine how serious the apparent hazard could be and whether you can continue without first correcting the problem.

Consider these conditions and the safety hazards they present:

- Electrical hazards, especially primary power (primary voltage on the frame can cause serious or fatal electrical shock)
- Explosive hazards, such as a damaged cathode ray tube (CRT) face or a bulging capacitor
- Mechanical hazards, such as loose or missing hardware

To determine whether there are any potentially unsafe conditions, use the following checklist at the beginning of every service task. Begin the checks with the power off, and the power cord disconnected.

Checklist:

1. Check exterior covers for damage (loose, broken, or sharp edges).
2. Power off the computer. Disconnect the power cord.
3. Check the power cord for:
 - a. A third-wire ground connector in good condition. Use a meter to measure third-wire ground continuity for 0.1 ohm or less between the external ground pin and the frame ground.
 - b. The power cord should be the authorized type specified for your computer. Go to: <http://www.lenovo.com/serviceparts-lookup>
 - c. Insulation must not be frayed or worn.
4. Check for cracked or bulging batteries.
5. Remove the cover.
6. Check for any obvious non-Lenovo alterations. Use good judgment as to the safety of any non-Lenovo alterations.
7. Check inside the unit for any obvious unsafe conditions, such as metal filings, contamination, water or other liquids, or signs of fire or smoke damage.
8. Check for worn, frayed, or pinched cables.
9. Check that the power-supply cover fasteners (screws or rivets) have not been removed or tampered with.

Handling devices that are sensitive to electrostatic discharge

Any computer part containing transistors or integrated circuits (ICs) should be considered sensitive to electrostatic discharge (ESD). ESD damage can occur when there is a difference in charge between objects. Protect against ESD damage by equalizing the charge so that the machine, the part, the work mat, and the person handling the part are all at the same charge.

Notes:

1. Use product-specific ESD procedures when they exceed the requirements noted here.
2. Make sure that the ESD protective devices you use have been certified (ISO 9000) as fully effective.

When handling ESD-sensitive parts:

- Keep the parts in protective packages until they are inserted into the product.
- Avoid contact with other people.
- Wear a grounded wrist strap against your skin to eliminate static on your body.
- Prevent the part from touching your clothing. Most clothing is insulative and retains a charge even when you are wearing a wrist strap.
- Use a grounded work mat to provide a static-free work surface. The mat is especially useful when handling ESD-sensitive devices.
- Select a grounding system, such as those listed below, to provide protection that meets the specific service requirement.

Note: The use of a grounding system to guard against ESD damage is desirable but not necessary.

- Attach the ESD ground clip to any frame ground, ground braid, or green-wire ground.
- When working on a double-insulated or battery-operated system, use an ESD common ground or reference point. You can use coax or connector-outside shells on these systems.
- Use the round ground prong of the ac plug on ac-operated computers.

Grounding requirements

Electrical grounding of the computer is required for operator safety and correct system function. Proper grounding of the electrical outlet can be verified by a certified electrician.

Safety notices (multilingual translations)

The safety notices in this section are provided in the following languages:

- English
- Arabic
- Brazilian Portuguese
- French
- German
- Hebrew
- Japanese
- Korean
- Spanish
- Traditional Chinese



DANGER

Before the computer is powered on after FRU replacement, make sure that all screws, springs, and other small parts are in place and are not left loose inside the computer. Verify this by shaking the computer and listening for rattling sounds. Metallic parts or metal flakes can cause electrical short circuits.



DANGER

Some standby batteries contain a small amount of nickel and cadmium. Do not disassemble a standby battery, recharge it, throw it into fire or water, or short-circuit it. Dispose of the battery as required by local ordinances or regulations. Use only the battery in the appropriate parts listing. Use of an incorrect battery can result in ignition or explosion of the battery.



DANGER

The battery pack contains small amounts of nickel. Do not disassemble it, throw it into fire or water, or short-circuit it. Dispose of the battery pack as required by local ordinances or regulations. Use only the battery in the appropriate parts listing when replacing the battery pack. Use of an incorrect battery can result in ignition or explosion of the battery.



DANGER

The lithium battery can cause a fire, an explosion, or a severe burn. Do not recharge it, remove its polarized connector, disassemble it, heat it above 100°C (212°F), incinerate it, or expose its cell contents to water. Dispose of the battery as required by local ordinances or regulations. Use only the battery in the appropriate parts listing. Use of an incorrect battery can result in ignition or explosion of the battery.



DANGER

If the LCD breaks and the fluid from inside the LCD gets into your eyes or on your hands, immediately wash the affected areas with water for at least 15 minutes. Seek medical care if any symptoms from the fluid are present after washing.



DANGER

To avoid shock, do not remove the plastic cover that protects the lower part of the inverter card.



DANGER

Though the main batteries have low voltage, a short-circuited or grounded battery can produce enough current to burn personnel or combustible materials.



DANGER

Unless hot swap is allowed for the FRU being replaced, do as follows before removing it: power off the computer, unplug all power cords from electrical outlets, remove the battery pack, and disconnect any interconnecting cables.



قبل إعادة تشغيل الحاسب بعد الانتهاء من استبدال FRU، تأكد من أنه قد تم إعادة كل من المسامير و السوست وكل الأجزاء الصغيرة الأخرى في أماكنهم ولم يتم فقدهم داخل الحاسب. ويمكن التحقق من ذلك عن طريق هز الحاسب والاستماع لأي صوت صاخب يصدر منه. قد تؤدي الأجزاء أو الرقائق المعدنية إلى حدوث دائرة قصر.



تحتوي بعض البطاريات الاحتياطية على كمية صغيرة من مادتى النيكل والكادميوم. لا تقم بفك أو إعادة شحن البطارية الاحتياطية ولا تقم أيضا بالقائها في النار أو الماء ولا تتسبب في احداث دائرة قصر بها. قم بالتخلص من البطارية كما هو موضح في القوانين المحلية. استخدم نوع البطارية المحدد والذي يوصى باستخدامه. حيث أنه قد يؤدي استخدام نوع بطارية غير صحيح الى اشتعالها أو انفجارها.



تحتوي حزمة البطارية على كمية صغيرة من مادة النيكل. لا تقم بفكها أو القاءها في النار أو الماء ولا تتسبب في احداث دائرة قصر بها. تخلص من حزمة البطارية وفقا لما هو موضح في القوانين المحلية. قم، عند استبدال حزمة البطارية، باستخدام الأنواع المحددة فقط والتي يوصى باستخدامها. حيث أنه قد يؤدي استخدام نوع بطارية غير صحيح الى اشتعالها أو انفجارها.



قد تتسبب بطارية الليثيوم في حدوث حريق أو انفجار أو حدوث حروق شديدة. لا تقم بإعادة شحن البطارية أو إزالة موصل الاستقطاب الخاص بها ولا تحاول أيضا فكها أو تسخينها لأكثر من ١٠٠ درجة مئوية (٢١٢ فهرنهايت) أو حرقها أو تعريض محتويات الخاتة الخاصة بها للماء. قم بالتخلص من البطارية وفقا لما هو موضح في القوانين المحلية. استخدم نوع البطارية المحدد والذي يوصى باستخدامه. حيث أنه قد يؤدي استخدام نوع بطارية غير صحيح الى اشتعالها أو انفجارها.



إذا ما انكسرت شاشة LCD ولامس السائل الداخلي عينيك أو يديك، قم في الحال بغسلهما بالماء لمدة لا تقل عن ١٥ دقيقة. إذا ما وجدت أي أعراض بعد الغسل اطلب عندئذ المساعدة الطبية.



لتجنب التعرض لأي صدمات، لا تقم بإزالة الغطاء البلاستيكي الذي يحمي الجزء الأسفل من بطاقة العاكس.



على الرغم من أن البطاريات الرئيسية يكون لها جهد منخفض، إلا أنه قد تقوم البطاريات التي حدث قصور بها أو التي تم توصيلها أرضيا بإصدار تيار يكفي لحدوث حروق للأفراد أو تعرض المواد القابلة للاشتعال للحريق.



ما لم يتم السماح بالتبديل الفوري لأي FRU الجاري استبداله بدون ضرورة اغلاق النظام، قم بتنفيذ ما يلي قبل ازالته. قم بإيقاف تشغيل الحاسب ونزع كل أسلاك الطاقة من المخارج الكهربائية وقم أيضا بإزالة حزمة البطارية ثم قم بفصل أي كابلات متصلة.



PERIGO

Antes de ligar o computador após a substituição da FRU, certifique-se de que todos os parafusos, molas e outras peças pequenas estejam no lugar e não estejam soltos dentro do computador. Verifique isso sacudindo o computador e procurando ouvir sons de peças soltas. Peças metálicas ou lascas de metal podem causar curto-circuito.



PERIGO

Algumas baterias reserva contêm uma pequena quantidade de níquel e cádmio. Não desmonte uma bateria reserva, recarregue-a, jogue-a no fogo ou na água, ou deixe-a entrar em curto-circuito. Descarte a bateria conforme requerido pelas leis ou regulamentos locais. Use somente a bateria nas partes listadas apropriadas. O uso de uma bateria incorreta pode resultar em combustão ou explosão da bateria.



PERIGO

O pacote da bateria contém uma pequena quantidade de níquel. Não o desmonte, jogue-o no fogo ou na água, ou deixe-o entrar em curto-circuito. Descarte o pacote da bateria conforme requerido pelas leis ou regulamentos locais. Use somente a bateria nas partes listadas apropriadas ao substituir o pacote da bateria. O uso de uma bateria incorreta pode resultar em combustão ou explosão da bateria.



PERIGO

A bateria de lítio pode causar incêndio, explosão ou graves queimaduras. Não a recarregue, remova seu conector polarizado, desmonte-a, aqueça-a acima de 100°C (212°F), incinere-a, ou exponha o conteúdo de sua célula à água. Descarte a bateria conforme requerido pelas leis ou regulamentos locais. Use somente a bateria nas partes listadas apropriadas. O uso de uma bateria incorreta pode resultar em combustão ou explosão da bateria.



PERIGO

Se o LCD quebrar e o fluido de dentro dele entrar em contato com seus olhos ou com suas mãos, lave as áreas afetadas imediatamente com água durante pelo menos 15 minutos. Procure cuidados médicos se algum sintoma causado pelo fluido surgir após a lavagem.



PERIGO

Para evitar choque elétrico, não remova a capa plástica que protege a parte inferior da placa inversora.



PERIGO

Embora as principais baterias possuam baixa voltagem, uma bateria em curto-circuito ou aterrada pode produzir corrente o bastante para queimar materiais de pessoal ou inflamáveis.



PERIGO

A menos que uma hot swap seja permitida para a FRU que está sendo substituída, faça o seguinte antes de removê-la: desligue o computador, desconecte todos os cabos de energia das tomadas, remova o pacote de baterias e desconecte quaisquer cabos de interconexão.



DANGER

Avant de remettre l'ordinateur sous tension après remplacement d'une unité en clientèle, vérifiez que tous les ressorts, vis et autres pièces sont bien en place et bien fixées. Pour ce faire, secouez l'unité et assurez-vous qu'aucun bruit suspect ne se produit. Des pièces métalliques ou des copeaux de métal pourraient causer un court-circuit.



DANGER

Certaines batteries de secours contiennent du nickel et du cadmium. Ne les démontez pas, ne les rechargez pas, ne les exposez ni au feu ni à l'eau. Ne les mettez pas en court-circuit. Pour les mettre au rebut, conformez-vous à la réglementation en vigueur. Lorsque vous remplacez la pile de sauvegarde ou celle de l'horloge temps réel, veillez à n'utiliser que les modèles cités dans la liste de pièces détachées adéquate. Une batterie ou une pile inappropriée risque de prendre feu ou d'exploser.



DANGER

La batterie contient du nickel. Ne la démontez pas, ne l'exposez ni au feu ni à l'eau. Ne la mettez pas en court-circuit. Pour la mettre au rebut, conformez-vous à la réglementation en vigueur. Lorsque vous remplacez la batterie, veillez à n'utiliser que les modèles cités dans la liste de pièces détachées adéquate. En effet, une batterie inappropriée risque de prendre feu ou d'exploser.



DANGER

La pile de sauvegarde contient du lithium. Elle présente des risques d'incendie, d'explosion ou de brûlures graves. Ne la rechargez pas, ne retirez pas son connecteur polarisé et ne la démontez pas. Ne l'exposez pas à une température supérieure à 100°C, ne la faites pas brûler et n'en exposez pas le contenu à l'eau. Mettez la pile au rebut conformément à la réglementation en vigueur. Une pile inappropriée risque de prendre feu ou d'exploser.



DANGER

Si le panneau d'affichage à cristaux liquides se brise et que vous recevez dans les yeux ou sur les mains une partie du fluide, rincez-les abondamment pendant au moins quinze minutes. Consultez un médecin si des symptômes persistent après le lavage.



DANGER

Afin d'éviter tout risque de choc électrique, ne retirez pas le cache en plastique protégeant la partie inférieure de la carte d'alimentation.



DANGER

Bien que le voltage des batteries principales soit peu élevé, le court-circuit ou la mise à la masse d'une batterie peut produire suffisamment de courant pour brûler des matériaux combustibles ou causer des brûlures corporelles graves.



DANGER

Si le remplacement à chaud n'est pas autorisé pour l'unité remplaçable sur site que vous remplacez, procédez comme suit avant de retirer l'unité : mettez l'ordinateur hors tension, débranchez tous les cordons d'alimentation des prises de courant, retirez le bloc de batterie et déconnectez tous les câbles d'interconnexion.



VORSICHT

Bevor nach einem FRU-Austausch der Computer wieder angeschlossen wird, muß sichergestellt werden, daß keine Schrauben, Federn oder andere Kleinteile fehlen oder im Gehäuse vergessen wurden. Der Computer muß geschüttelt und auf Klappergeräusche geprüft werden. Metallteile oder-splitter können Kurzschlüsse erzeugen.



VORSICHT

Die Bereitschaftsbatterie, die sich unter dem Diskettenlaufwerk befindet, kann geringe Mengen Nickel und Cadmium enthalten. Sie darf nur durch die Verkaufsstelle oder den IBM Kundendienst ausgetauscht werden. Sie darf nicht zerlegt, wiederaufgeladen, kurzgeschlossen, oder Feuer oder Wasser ausgesetzt werden. Die Batterie kann schwere Verbrennungen oder Verätzungen verursachen. Bei der Entsorgung die örtlichen Bestimmungen für Sondermüll beachten. Beim Ersetzen der Bereitschafts-oder Systembatterie nur Batterien des Typs verwenden, der in der Ersatzteilliste aufgeführt ist. Der Einsatz falscher Batterien kann zu Entzündung oder Explosion führen.



VORSICHT

Akkus enthalten geringe Mengen von Nickel. Sie dürfen nicht zerlegt, wiederaufgeladen, kurzgeschlossen, oder Feuer oder Wasser ausgesetzt werden. Bei der Entsorgung die örtlichen Bestimmungen für Sondermüll beachten. Beim Ersetzen der Batterie nur Batterien des Typs verwenden, der in der Ersatzteilliste aufgeführt ist. Der Einsatz falscher Batterien kann zu Entzündung oder Explosion führen.



VORSICHT

Die Systembatterie ist eine Lithiumbatterie. Sie kann sich entzünden, explodieren oder schwere Verbrennungen hervorrufen. Batterien dieses Typs dürfen nicht aufgeladen, zerlegt, über 100°C erhitzt oder verbrannt werden. Auch darf ihr Inhalt nicht mit Wasser in Verbindung gebracht oder der zur richtigen Polung angebrachte Verbindungsstecker entfernt werden. Bei der Entsorgung die örtlichen Bestimmungen für Sondermüll beachten. Beim Ersetzen der Batterie nur Batterien des Typs verwenden, der in der Ersatzteilliste aufgeführt ist. Der Einsatz falscher Batterien kann zu Entzündung oder Explosion führen.



VORSICHT

Die Leuchtstoffröhre im LCD-Bildschirm enthält Quecksilber. Bei der Entsorgung die örtlichen Bestimmungen für Sondermüll beachten. Der LCD-Bildschirm besteht aus Glas und kann zerbrechen, wenn er unsachgemäß behandelt wird oder der Computer auf den Boden fällt. Wenn der Bildschirm beschädigt ist und die darin befindliche Flüssigkeit in Kontakt mit Haut und Augen gerät, sollten die betroffenen Stellen mindestens 15 Minuten mit Wasser abgespült und bei Beschwerden anschließend ein Arzt aufgesucht werden.



VORSICHT

Aus Sicherheitsgründen die Kunststoffabdeckung, die den unteren Teil der Spannungswandlerplatine umgibt, nicht entfernen.



VORSICHT

Obwohl Hauptbatterien eine niedrige Spannung haben, können sie doch bei Kurzschluß oder Erdung genug Strom abgeben, um brennbare Materialien zu entzünden oder Verletzungen bei Personen hervorzurufen.



VORSICHT

Wenn ein Austausch der FRU bei laufendem Betrieb nicht erlaubt ist, gehen Sie beim Austausch der FRU wie folgt vor: Schalten Sie den Computer aus, ziehen Sie alle Netzkabel von den Netzsteckdosen ab, entfernen Sie den Akku und ziehen Sie alle miteinander verbundenen Kabel ab.



סכנה

למני הפעלת המחשב לאחר החלפת FRU יש לוודא שכל חברגים, חקפזים, וחלקים קטנים אחרים נמצאים במקומם ואינם חופשיים לזוז בתוך המחשב. כדי לוודא זאת, יש לטלטל את המחשב ולחשיב לגילוי קולות שקשוק. חלקי או שבבי מתכת עלולים לגרום לקצרים חשמליים.



סכנה

סוללות המתנה מסוימות מכילות כמויות קטנות של ניקל וקדמיום. אין לפרק סוללות המתנה, לטעון אותה מחדש, להשליך אותה לאש או למים או לקצר אותה. יש לסלק את הסוללה כנדרש על ידי התקנות והחוקים המקומיים. יש להשתמש רק בסוללה המופיעה ברשימת החלקים המתאימה. שימוש בסוללה לא מתאימה עלול לגרום להצתה או התפוצצות של הסוללה.



סכנה

מארו הסוללה מכיל כמויות קטנות של ניקל וקדמיום. אין לפרק את מארו הסוללה, להשליך אותה לאש או למים או לקצר אותה. יש לסלק את מארו הסוללה כנדרש על ידי התקנות והחוקים המקומיים. יש להשתמש רק בסוללה המופיעה ברשימת החלקים המתאימה בזמן החלפת מארו הסוללה. שימוש בסוללה לא מתאימה עלול לגרום להצתה או התפוצצות של הסוללה.



סכנה

סוללות הליתיום עלולות לגרום לשריפה, להתפוצצות או לכוויות קשות. אין לטעון אותה מחדש, לסלק את המחבר המקוטב שלה, לפרק אותה או לחמם אותה לטמפרטורה העולה על 100 מעלות צלזיוס. אין לשרוף את הסוללה ואין לחשוף את תוכן התא למים. יש לסלק את הסוללה כנדרש בתקנות ובחוקים המקומיים. יש להשתמש רק בסוללה המופיעה ברשימת החלקים המתאימים. שימוש בסוללה אחרת עלול לגרום לסכנת שריפה או התפוצצות.



סכנה

אם מסך הנביש חנוזלי (LCD) נשבר וחנוזל מתוך חמסך בא במגע עם עיניכם או ידיכם, שטפו את חאזורים הננועים מיד במים במשך 15 דקות לפחות. פנו לקבלת עזרה רפואית אם תסמינים חנובעים מחמגע עם חנוזל נמשכים לאחר חשטיפו.



סכנה

כדי למנוע התחשמלות, אין להסיר את מכסה הפלסטיק המגן על חלקו התחתון של הכרטיס החפוף.



סכנה

אף שהסוללות הראשיות הן בעלות מתח נמוך, סוללה מקוצרת או מוארכת עלולה להפיק זרם מספיק לגרימת כוויות או להצתת חומרים דליקים.



סכנה

אלא אם כן מותרת 'החלפה חמה' של ה-FRU ממוחלף, פעלו כדלהלן לפני חסרתו: כבו את המחשב, נתקו את כל כבלי החשמל מחשקעים, הוציאו את מארז הסוללות ונתקו את כל הכבלים מחוברים.



危険

FRU の交換後、ThinkPad の電源を入れる前に、ねじ、バネ、その他の小さな部品がすべて正しい位置にあり、また ThinkPad の内部で緩んでいないことを確認してください。
これを確認するには、ThinkPad を振って、カチャカチャと音がしないか確かめます。金属部品や金属破片はショートの原因になることがあります。



危険

予備バッテリーの中には少量のニッケルとカドミウムが含まれているものがあります。したがって、予備バッテリーの分解、再充電、火または水の中への投棄、またはショートさせることは決して行わないでください。バッテリーを廃棄する場合は地方自治体の条例に従ってください。適切なパーツ・リストにあるバッテリーだけを使用してください。誤ったバッテリーを使用すると、バッテリーが発火したり、爆発したりすることがあります。



危険

バッテリー・パックには少量のニッケルが含まれています。バッテリー・パックを分解したり、火または水の中に投げ込んだり、ショートさせないでください。バッテリー・パックの廃棄にあたっては、地方自治体の条例または規則に従ってください。バッテリー・パックを交換するときは、適切なパーツ・リストにあるバッテリーだけを使用してください。誤ったバッテリーを使用すると、バッテリーが発火したり、爆発したりすることがあります。



危険

リチウム・バッテリーは、火災、爆発、または重症のやけどを引き起こすことがあります。バックアップ・バッテリーの充電、その極性コネクターの取り外し、バッテリー本体の分解、100℃ (212°F) 以上への加熱、焼却、電池の中身を水に浸すことはしないでください。バッテリーを廃棄する場合は地方自治体の条例に従ってください。適切なパーツ・リストにあるバッテリーだけを使用してください。誤ったバッテリーを使用すると、バッテリーが発火したり、爆発したりすることがあります。



危険

LCD が破損し、LCD 中の液体が目に入ったり、手に触れたりした場合は、液体が触れた部分を少なくとも 15 分間洗い流してください。洗い流した後に、液体によって何らかの症状が現れた場合は、医師の治療を受けてください。



危険

感電を防ぐため、インバーター・カードの下部を保護しているプラスチック・カバーを外さないでください。



危険

メイン・バッテリーの電圧は低くても、ショートしたり、接地したバッテリーが、作業者にやけどを負わせたり、可燃物を燃やすだけの電流を発生させる場合があります。



危険

交換しようとしている FRU がホット・スワップに対応していない場合、それを取り外す前に、コンピューターの電源をオフにし、すべての電源コードをコンセントから抜き、バッテリー・パックを取り外して、相互接続しているケーブルをすべて切り離してください。



위험

FRU를 교체하고 나서 컴퓨터 전원을 켜기 전에 모든 나사, 스프링 및 기타 작은 부품들이 올바른 위치에 있는지, 컴퓨터 내부에 단단하게 연결되어 있는지 확인하십시오. 컴퓨터를 흔들어 달각거리는 소리가 나지 않는지 확인하십시오. 금속 부품 또는 금속 조각은 누전을 일으킬 수 있습니다.



위험

일부 보조 배터리에는 소량의 니켈 및 카드뮴이 포함되어 있습니다. 보조 배터리를 분해하거나, 다시 충전하거나, 불 또는 물에 던지거나, 단락시키지 마십시오. 배터리 팩을 폐기할 때에는 해당 지역의 법률 규정을 따르십시오. 배터리 팩을 교체할 때에는 올바른 배터리만 사용하십시오. 올바르게 않은 배터리를 사용하면 배터리가 발화되거나 폭발할 수 있습니다.



위험

배터리 팩에는 소량의 니켈이 포함되어 있습니다. 배터리 팩을 분해하거나, 불 또는 물에 던지거나, 단락시키지 마십시오. 배터리 팩을 폐기할 때에는 해당 지역의 법률 규정을 따르십시오. 배터리 팩을 교체할 때에는 올바른 배터리만 사용하십시오. 올바르게 않은 배터리를 사용하면 배터리가 발화되거나 폭발할 수 있습니다.



위험

리튬 배터리는 화재, 폭발 또는 심각한 화상을 일으킬 수 있습니다. 리튬 배터리를 다시 충전하거나, 극성 커넥터를 제거하거나, 분해하거나, 100C(212F) 이상으로 가열하거나, 소각하거나, 전지 내용물을 물에 노출시키지 마십시오. 배터리를 폐기할 때에는 해당 지역을 법률 규정을 따르십시오. 올바른 배터리만 사용하십시오. 올바르게 않은 배터리를 사용하면 배터리가 발화되거나 폭발할 수 있습니다.



위험

LCD가 파손되어 LCD 내부의 액체가 눈에 들어가거나 손에 묻으면 즉시 깨끗한 물로 15분 이상 닦아 내십시오. 씻은 후에 조금이라도 이상을 느끼면 즉시 병원에 가서 의사의 진찰을 받아야 합니다.



위험

전기적 위험을 방지하려면 인버터 카드의 아래 부분을 보호하는 플라스틱 덮개를 제거하지 마십시오.



위험

기본 배터리의 전압은 낮지만, 단락되거나 접지된 배터리는 화상을 입히기에 충분한 전류와 가연성 물질을 발생시킬 수 있습니다.



위험

FRU 교체 시 Hot Swap이 지원되지 않는 경우, FRU를 제거하기 전에 컴퓨터의 전원을 끄고, 전기 콘센트에서 전원 코드를 분리하고, 배터리를 제거한 후, 연결된 모든 케이블을 분리하십시오.



PELIGRO

Antes de encender el sistema despues de sustituir una FRU, compruebe que todos los tornillos, muelles y demás piezas pequeñas se encuentran en su sitio y no se encuentran sueltas dentro del sistema. Compruébelo agitando el sistema y escuchando los posibles ruidos que provocarían. Las piezas metálicas pueden causar cortocircuitos eléctricos.



PELIGRO

Algunas baterías de reserva contienen una pequeña cantidad de níquel y cadmio. No las desmonte, ni recargue, ni las eche al fuego o al agua ni las cortocircuite. Deséchelas tal como dispone la normativa local. Utilice sólo baterías que se encuentren en la lista de piezas. La utilización de una batería no apropiada puede provocar la ignición o explosión de la misma.



PELIGRO

Las baterías contienen pequeñas cantidades de níquel. No las desmonte, ni recargue, ni las eche al fuego o al agua ni las cortocircuite. Deséchelas tal como dispone la normativa local. Utilice sólo baterías que se encuentren en la lista de piezas al sustituir la batería. La utilización de una batería no apropiada puede provocar la ignición o explosión de la misma.



PELIGRO

La batería de repuesto es una batería de litio y puede provocar incendios, explosiones o quemaduras graves. No la recargue, ni quite el conector polarizado, ni la desmonte, ni caliente por encima de los 100°C (212°F), ni la incinere ni exponga el contenido de sus celdas al agua. Deséchela tal como dispone la normativa local.



PELIGRO

Si la LCD se rompe y el fluido de su interior entra en contacto con sus ojos o sus manos, lave inmediatamente las áreas afectadas con agua durante 15 minutos como mínimo. Obtenga atención medica si se presenta algún síntoma del fluido despues de lavarse.



PELIGRO

Para evitar descargas, no quite la cubierta de plástico que rodea la parte baja de la tarjeta invertida.



PELIGRO

Aunque las baterías principales tienen un voltaje bajo, una batería cortocircuitada o con contacto a tierra puede producir la corriente suficiente como para quemar material combustible o provocar quemaduras en el personal.



PELIGRO

Salvo que se permita el intercambio en caliente para la unidad sustituible localmente, realice lo siguiente antes de extraerla: apague el sistema, desconecte todos los cables de alimentación de las tomas de alimentación eléctrica, extraiga la batería y desconecte los cables de interconexión.



危險

完成 FRU 更換之後，在開啟電腦的電源之前，請確定所有螺絲、彈簧及其他小零件都已歸位，沒有遺留在電腦內部。
若要確認這一點，請搖晃電腦，聽聽看是否有卡嗒的聲音。
金屬零件或儀錶的火花會造成電線短路。



危險

部分備用電池含有微量的鎳和鎘。請勿拆開備用電池、再充電、丟入火或水中，或使其形成短路。請按照當地法令或規定來棄置電池。
僅限使用零件清單中的電池。使用不適當的電池會導致電池起火或爆炸。



危險

電池套件含有微量的鎳。請勿拆開電池套件、丟入火或水中，或使其形成短路。請按照當地法令或規定來棄置電池套件。
更換電池套件時，僅限使用零件清單中的電池。使用不適當的電池會導致電池起火或爆炸。



危險

鋰電池會導致起火、爆炸或嚴重燒傷。請勿再充電、拔除其電極接頭、拆開、加熱超過 100°C (212°F)、焚燒，或讓電池組成物浸到水。請按照當地法令或規定來棄置電池。
僅限使用零件清單中的電池。使用不適當的電池會導致電池起火或爆炸。



危險

如果 LCD 破裂導致 LCD 流出的液體沾到您的眼睛或手，請立即以清水沖洗沾染部位至少 15 分鐘。如果在清洗後出現該液體所造成的任何症狀，請就醫治療。



危險

為避免電擊，請勿拆下轉換卡下面的塑膠護蓋。



危險

雖然主電池的電壓很低，但短路或接地電池所產生的電流，仍足以使人燒傷或使可燃物質起火。



危險

除非 FRU 允許以熱抽換來替換，否則請依下列方式將其移除：將電腦關機，拔除插座上所有電源線，移除電池包，並拔開任何交互連接的線材。

Chapter 2. General checkout

This chapter contains the following topics:

Before you go to the checkout instructions, ensure that you read the following important notes.

Important notes:

- **Only certified trained personnel should service the computer.**
- **Before replacing any FRU, read the entire page on removing and replacing FRUs.**
- **Be extremely careful during such write operations as copying, saving, or formatting.** Drives in the computer that you are servicing sequence might have been altered. If you select an incorrect drive, data or programs might be overwritten.
- **Replace a FRU only with another FRU of the correct model.** When you replace a FRU, make sure that the model of the machine and the FRU part number are correct by referring to the FRU parts list.
- **A FRU should not be replaced because of a single, unreproducible failure.** Single failures can occur for a variety of reasons that have nothing to do with a hardware defect, such as cosmic radiation, electrostatic discharge, or software errors. Consider replacing an FRU only when a problem recurs. If you suspect that a FRU is defective, clear the error log and run the test again. If the error does not recur, do not replace the FRU.
- **Be careful not to replace a nondefective FRU.**

What to do first

When you return a FRU, you must include the following information in the parts exchange form or parts return form that you attach to it:

1. Name and phone number of service technician
2. Date of service
3. Date on which the machine failed
4. Date of purchase
5. Failure symptoms, error codes appearing on the display, and beep symptoms
6. Procedure index and page number in which the failing FRU was detected
7. Failing FRU name and part number
8. Machine type, model number, and serial number
9. Customer's name and address

Note: During the warranty period, the customer may be responsible for repair costs if the computer damage was caused by misuse, accident, modification, unsuitable physical or operating environment, or improper maintenance by the customer. Following is a list of some common items that are not covered under warranty and some symptoms that might indicate that the system was subjected to stress beyond normal use.

Before checking problems with the computer, determine whether the damage is covered under the warranty by referring to the following list:

The following are not covered under warranty:

- LCD panel cracked from the application of excessive force or from being dropped
- Scratched (cosmetic) parts
- Distortion, deformation, or discoloration of the cosmetic parts
- Plastic parts, latches, pins, or connectors that have been cracked or broken by excessive force

- Damage caused by liquid spilled into the system
- Damage caused by the improper insertion of a personal-computer card (PC card) or the installation of an incompatible card
- Improper disc insertion or use of an external optical drive
- Fuses blown by attachment of a non-supported device
- Forgotten computer password (making the computer unusable)
- Sticky keys caused by spilling a liquid onto the keyboard
- Use of an incorrect ac power adapter on laptop products

The following symptoms might indicate damage caused by non-warranted activities:

- Missing parts might be a symptom of unauthorized service or modification.
- Check for obvious damage to a hard disk drive. If the spindle of a hard disk drive becomes noisy, the hard disk drive might have been dropped or subject to excessive force.

CRU list

Table 1. Models: All

CRU	Type
ac power adapter	self-service
Power cord	self-service

Chapter 3. Identifying FRUs (CRUs)

Locate FRUs and CRUs

The exploded illustrations help Lenovo service technicians identify FRUs or CRUs that they may need to replace when servicing a customer's computer.

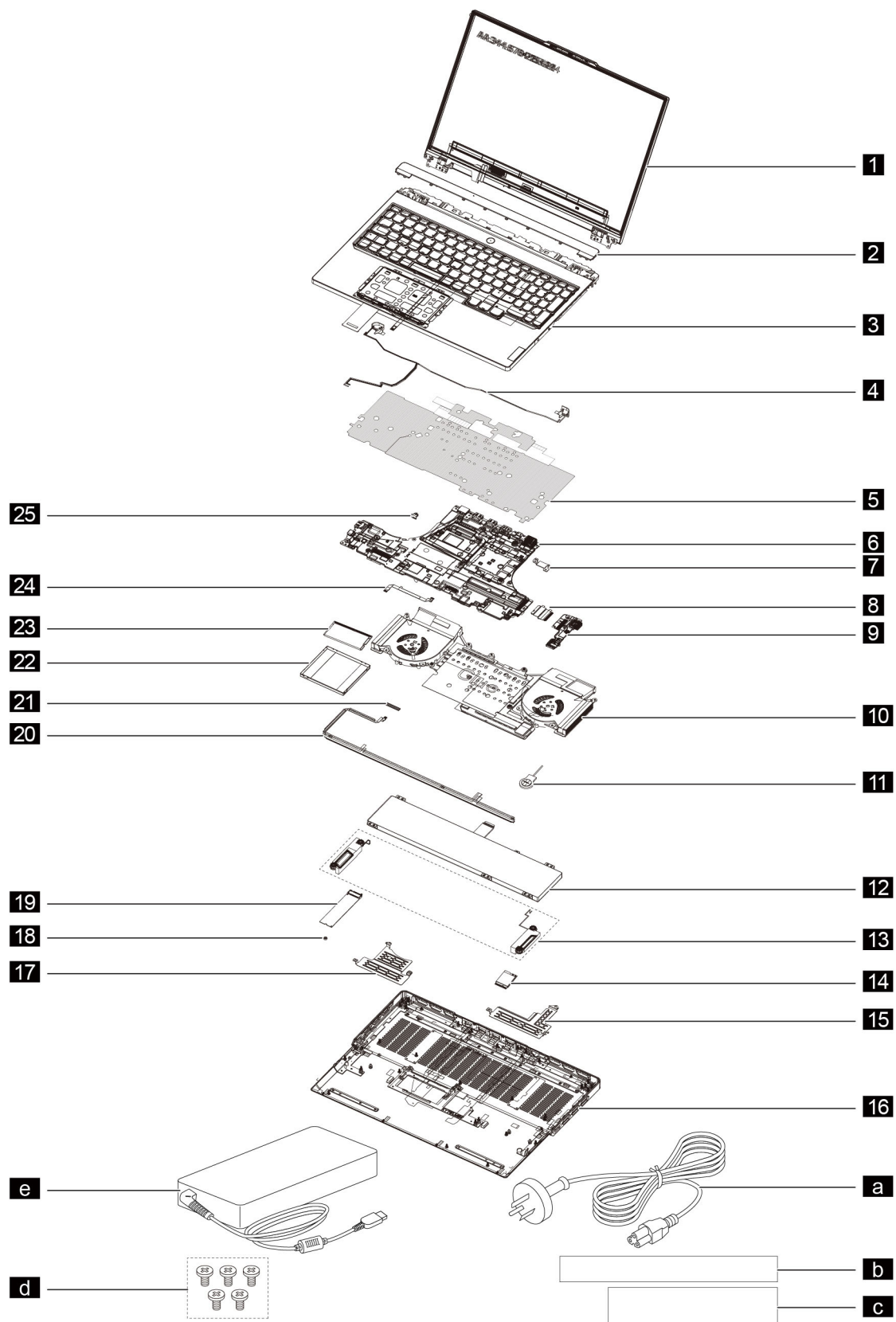


Figure 1. Exploded view

Table 2. FRU (CRU) categories

No.	FRU (CRU) category
1	LCD module Note: The LCD module as a whole is not a FRU, it contains FRUs as its components.
2	Strip cover
3	Upper case
4	Antenna
5	Keyboard bracket mylar
6	System board
7	DC-in bracket
8	I/O board cable
9	I/O board
10	Thermal module Note: The computer with a white backlight keyboard has a different thermal module.
11	CMOS battery
12	Battery pack
13	Speakers
14	Wi-Fi card
15	Solid-state drive (SSD) plate (R)
16	Lower case
17	Solid-state drive (SSD) plate (L)
18	Solid-state drive (SSD) standoff
19	Solid-state drive (SSD)
20	Lightingbar *
21	Backlight connector mylar
22	Memory module shielding
23	Memory module
24	Touchpad board cable
25	System board hook
a	Power cord
b	Liquid metal service kit
c	Keycaps DIY kit
d	Screw pack
e	ac power adapter

* for selected models

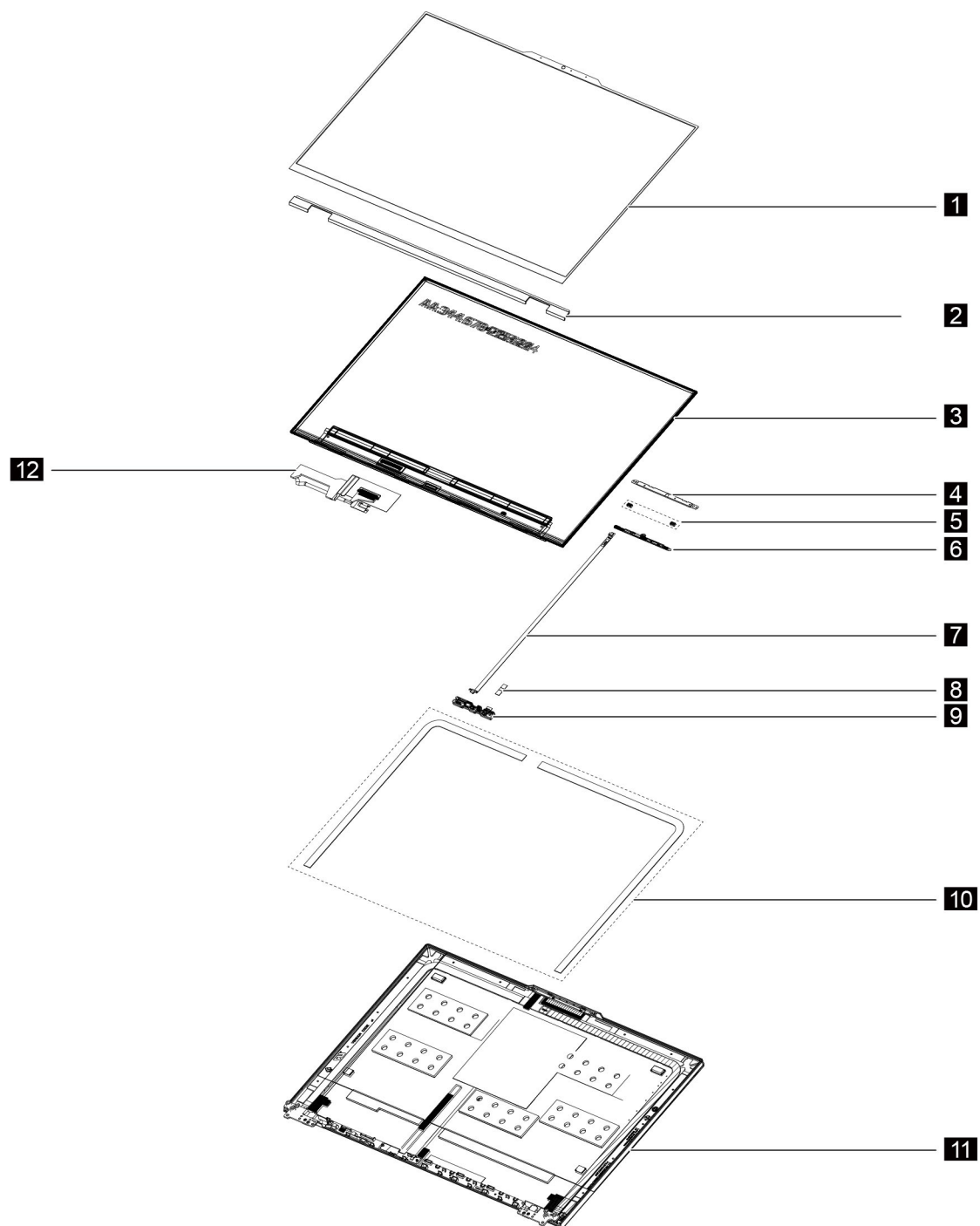


Figure 2. LCD module - exploded view

Table 3. FRU categories for the LCD module

No.	FRU (CRU) category
1	LCD bezel
2	Hinge cover
3	LCD panel

Table 3. FRU categories for the LCD module (continued)

No.	FRU (CRU) category
4	Camera bracket
5	Microphone rubber
6	Camera board
7	Camera cable
8	Conductive tape
9	Sensor board
10	Removable tape
11	LCD cover
12	EDP cable

Chapter 4. Removing a FRU or CRU

Service tools

The following table lists tools for servicing Lenovo computers. Tools with a cross mark are needed for servicing the product models as described by this publication. Prepare them before you service the product.

Table 4. Service tools

Service tool and consumable	Model applicability
Screw driver (Phillips head) (PH1/PH0)	X
Screw driver (Torx head) (T5)	
Screw driver (Torx head) (T30)	
Pry tool 1	X
Tweezers (conductive)	X
Tweezers (isolated)	
Suction cup	
Hexagonal socket	
Thermal interface materials	X
Acetate tape	X
Polyamide tape	
Mylar tape	
Electrical tape	
Double-sided tape	
Conductive tape	
Eraser	
Heat gun	
Brown brush	

Notes:

- T30 screw drivers are used to service the new Intel Xeon CPUs.
- Hexagonal sockets are used to remove antenna connectors.

General guidelines

When removing or replacing a FRU, ensure that you observe the following general guidelines:

1. Do not try to service any computer unless you have been trained and certified. An untrained person runs the risk of damaging parts.
2. Begin by removing any FRUs that have to be removed before replacing the failing FRU. Any such FRUs are listed at the beginning of each FRU replacement procedure. Remove them in the order in which they are listed.

3. Follow the correct sequence in the steps for removing a FRU, as shown in the illustrations by the numbers in square callouts.
4. When removing a FRU, move it in the direction as shown by the arrow in the illustration.
5. To install a new FRU in place, perform the removal procedure in reverse and follow any notes that pertain to replacement.
6. When replacing a FRU, carefully retain and reuse all screws.
7. When replacing the base cover, reapply all labels that come with the replacement base cover. If some original labels are not included with the replacement base cover, peel them off from the original base cover and paste them on the replacement base cover.



Before removing any FRU or CRU, shut down the computer and unplug all power cords from electrical outlets.

Attention: After replacing a FRU, do not turn on the computer until you have ensured that all screws, springs, and other small parts are in place and none are loose inside the computer. Verify this by shaking the computer gently and listening for rattling sounds. Metallic parts or metal flakes can cause electrical short circuits.

Attention: The system board is sensitive to and can be damaged by ESD. Before touching it, establish personal grounding by touching a ground point with one hand or by using an ESD strap (P/N 6405959).

Handling thermal interface materials

Thermal interface materials are typically applied between a heat sink and a CPU (and/or GPU) die to enhance the heat transfer capability of the heat sink. If thermal interface materials are exposed during computer servicing, such as when replacing the heat sink or system board, it is important to handle the thermal interface materials properly.

- You need to completely remove the old thermal interface materials from the CPU and/or GPU die.
- You need to apply new thermal interface materials onto the heat sink according to the type, quantity, and application areas specified in this publication.

Type, quantity, and areas of thermal interface materials application on the heat sink

The table and figure below provide information on the type and quantity of thermal interface materials, as well as the specific areas on the heat sink where these materials should be applied.

Area	Type	Quantity
a	7958PCM	0.24g, 25 mm x 16 mm x 0.18 mm

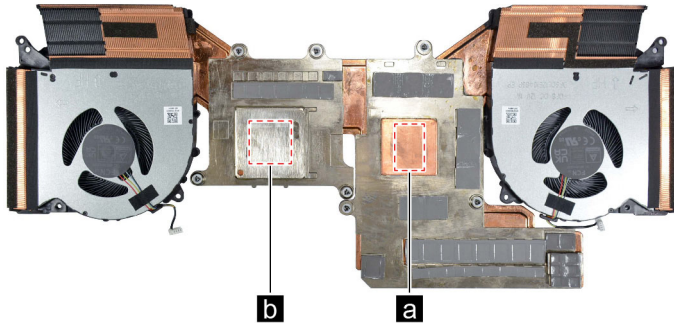


Figure 3. Areas on the heat sink where thermal interface materials should be applied

Notes:

- The area marked **a** indicates the GPU contact area. Apply thermal interface materials only on area **a**.
- The area marked **b** indicates the CPU contact area. Apply liquid metal on the CPU die surface. Do not apply thermal interface materials on area **b**.

Areas on the system board where thermal interface materials are applied

The following figure shows the areas on the system board where thermal interface materials are applied.

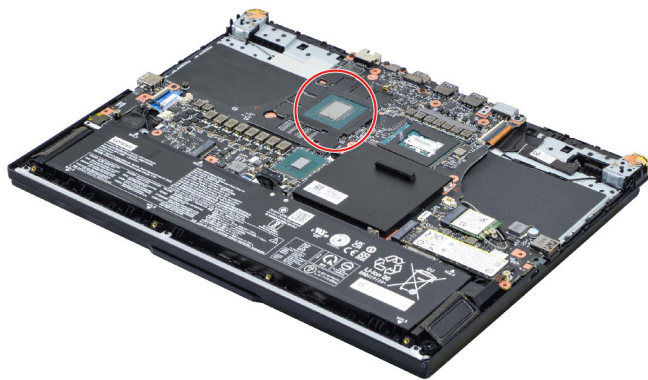


Figure 4. Areas on the system board where thermal interface materials are applied

Remove the lower case

Make sure the computer has been shut down before servicing the computer.

Step 1. Place the computer upside down on a flat surface.

Step 2. Remove ten screws.

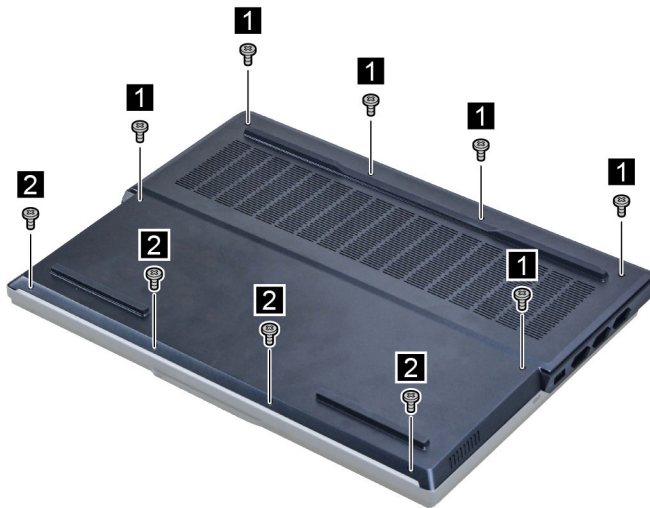


Figure 5. Remove ten screws

Screw specifications	Number of screws	Torque force (kgf.cm)
M2 x L12.6	6	1.85 ± 0.15
M2 x L4	4	1.85 ± 0.15

Step 3. Pry up the latches and then remove the lower case.

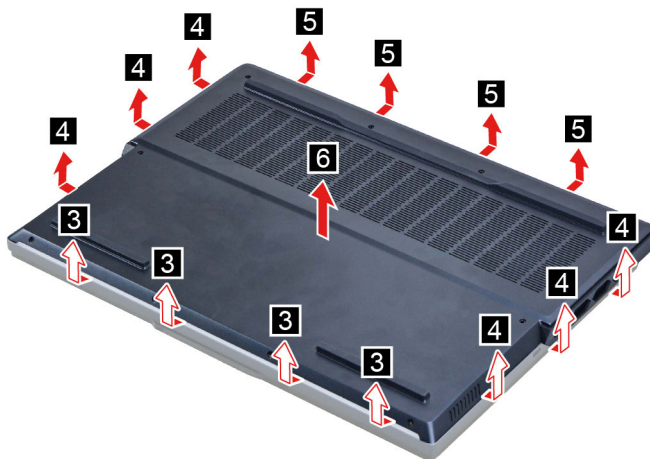


Figure 6. Pry up the latches and remove the lower case

Go to <https://support.lenovo.com/partslookup> to look up the Lenovo part number of the following replacement part:

Lower case

Remove the solid-state drive (SSD) plate (L or R)

Make sure the following FRU (or CRU) has been removed.

“Remove the lower case” on page 29

Step 1. Disconnect the battery pack cable from the system board.

Attention: Use your fingernails to pull the connector to unplug it. Do not pull the cable.

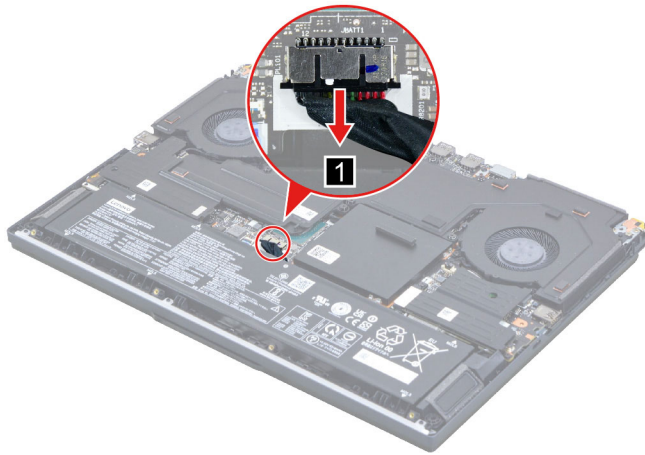


Figure 7. Disconnect the battery pack cable from the system board

Step 2. Remove the screws and then remove the SSD plate (L or R) carefully.

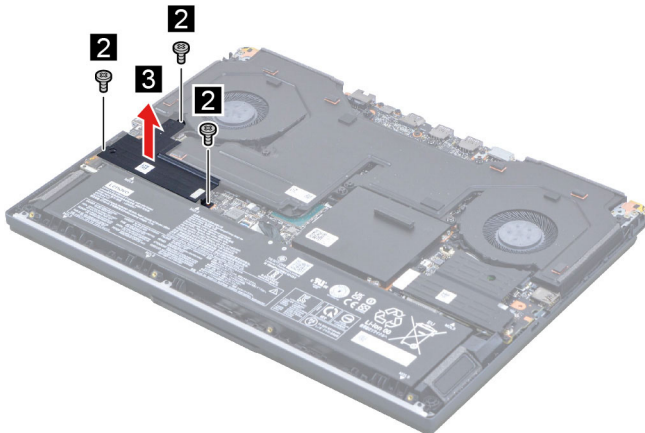


Figure 8. Remove the SSD plate (R)

Screw specifications	Number of screws	Torque force (kgf.cm)
M2 x L5	3	1.85 ± 0.15

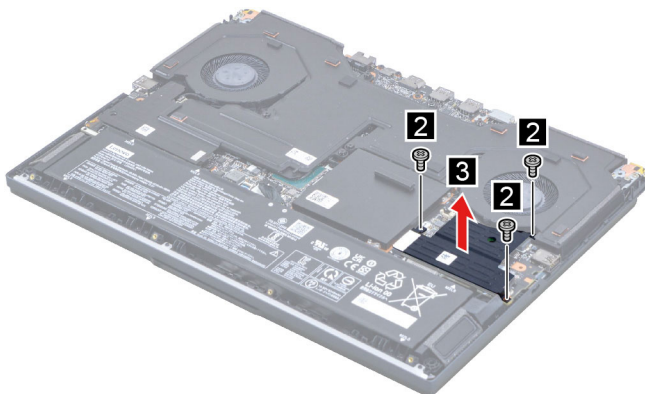


Figure 9. Remove the SSD plate (L)

Screw specifications	Number of screws	Torque force (kgf.cm)
M2 x L5	3	1.85 ± 0.15

Go to <https://support.lenovo.com/partslookup> to look up the Lenovo part numbers of the following replacement parts:

Solid-state drive (SSD) plate (L)

Solid-state drive (SSD) plate (R)

Remove the solid-state drive (SSD)

Make sure the following FRUs (or CRUs) have been removed.

“Remove the lower case” on page 29

“Remove the solid-state drive (SSD) plate (L or R)” on page 30

Step 1. Remove two screws.

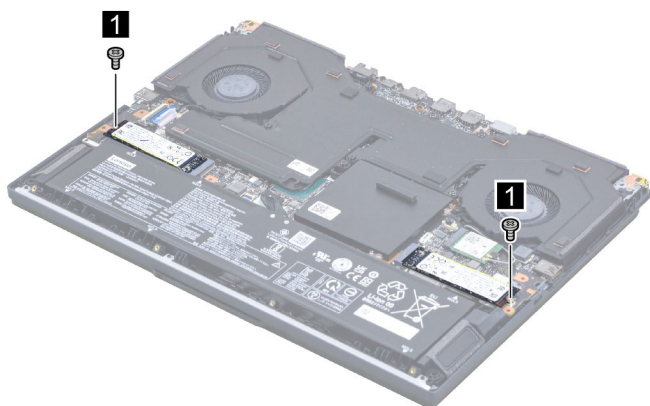


Figure 10. Remove two screws

Screw specifications	Number of screws	Torque force (kgf.cm)
M2 x L1.8	2	1.85 ± 0.15

Step 2. Remove the SSD by pulling it away from the slot.

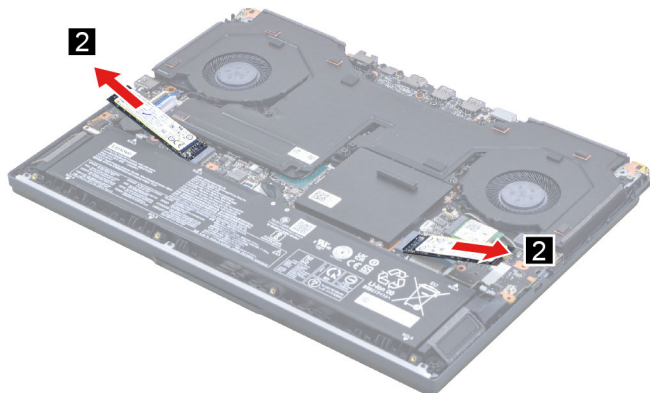


Figure 11. Remove the SSD

Notes: For LCD panel with the factory color calibration feature, do the following to install new color profiles:

1. Go to <https://pcsupport.lenovo.com/us/en/downloads/DS543953> to download the installation software. Double-click the EXE file and follow the on-screen instructions to finish the installation.
2. X-RiteColorAssistant.exe will auto run. Click **Restore Profile** button from prompted window to restore the profile from Lenovo cloud.

Go to <https://support.lenovo.com/partslookup> to look up the Lenovo part number of the following replacement part:

Solid-state drive (SSD)

Remove the solid-state drive (SSD) stand off

Make sure the following FRUs (or CRUs) have been removed.

“Remove the lower case” on page 29

Step 1. Remove the SSD plate (R) and then remove the SSD. For details, see “Remove the solid-state drive (SSD) plate (L or R)” on page 30 and “Remove the solid-state drive (SSD)” on page 32.

Step 2. Remove the SSD stand off.

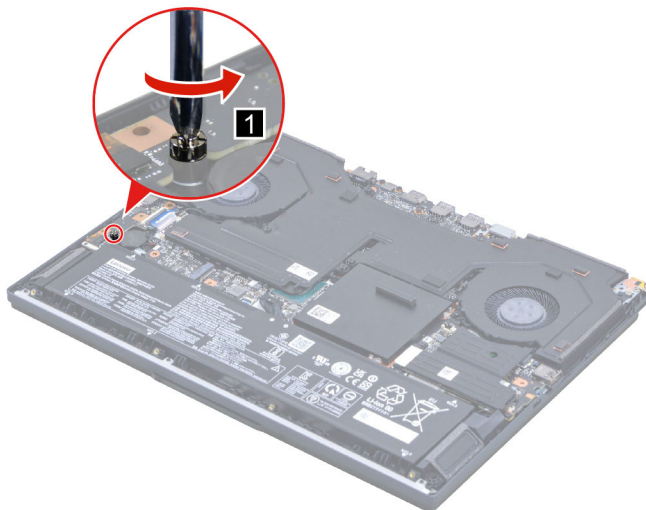


Figure 12. Remove the SSD stand off

Screw specifications	Number of screws	Torque force (kgf.cm)
M2.5 x L3.2	1	3.0 ± 0.15

Go to <https://support.lenovo.com/partslookup> to look up the Lenovo part number of the following replacement part:

Solid-state drive (SSD) stand off

Remove the battery pack

Make sure the following FRUs (or CRUs) have been removed.

“Remove the lower case” on page 29

“Remove the solid-state drive (SSD) plate (L or R)” on page 30

“Remove the solid-state drive (SSD)” on page 32

Step 1. Remove six screws and then remove the battery pack.

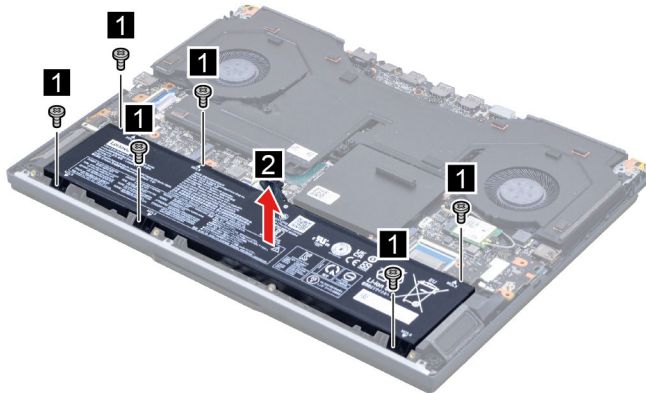


Figure 13. Remove the battery pack

Screw specifications	Number of screws	Torque force (kgf.cm)
M2 x L5	6	1.85 ± 0.15

Go to <https://support.lenovo.com/partslookup> to look up the Lenovo part number of the following replacement part:

Battery pack

Remove the touchpad board cable

Make sure the following FRUs (or CRUs) have been removed.

“Remove the lower case” on page 29

“Remove the solid-state drive (SSD) plate (L or R)” on page 30

“Remove the solid-state drive (SSD)” on page 32

“Remove the battery pack ” on page 33

Step 1. Remove the touchpad board cable from the system board and the touchpad board.

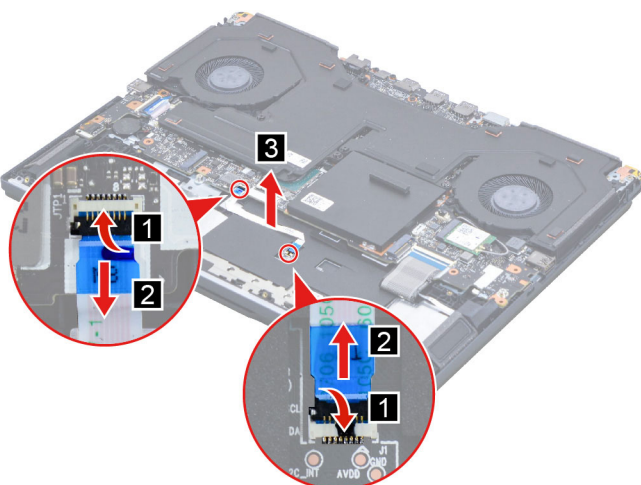


Figure 14. Remove the touchpad board cable

Go to <https://support.lenovo.com/partslookup> to look up the Lenovo part number of the following replacement part:

Touchpad board cable

Remove the speakers

Make sure the following FRUs (CRUs) have been removed.

“Remove the lower case” on page 29

“Remove the solid-state drive (SSD) plate (L or R)” on page 30

“Remove the solid-state drive (SSD)” on page 32

“Remove the battery pack ” on page 33

Step 1. Detach the speaker cable connectors and release the speaker cable. Remove the speakers.

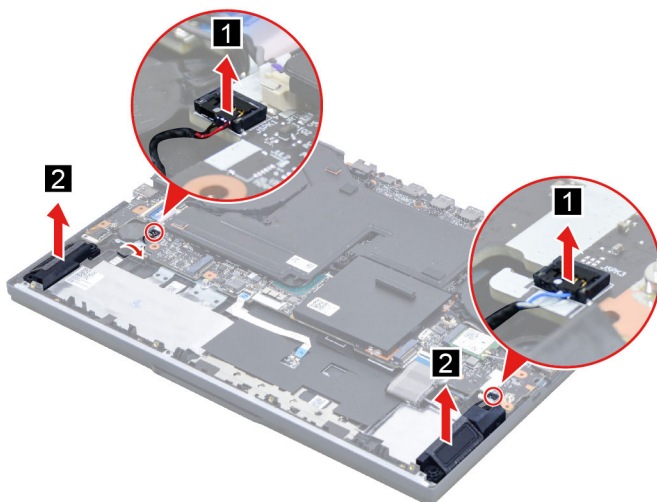


Figure 15. Remove the speakers

Go to <https://support.lenovo.com/partslookup> to look up the Lenovo part number of the following replacement part:

Remove the lightingbar (for selected models)

Make sure the following FRU (or CRU) has been removed.

- “Remove the lower case” on page 29
- “Remove the solid-state drive (SSD) plate (L or R)” on page 30
- “Remove the solid-state drive (SSD)” on page 32
- “Remove the battery pack ” on page 33

Step 1. Disconnect the keyboard cable from the system board and then peel off the backlight connector mylar.

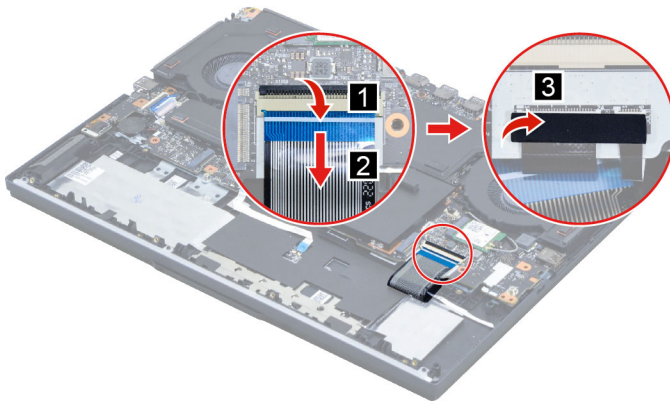


Figure 16. Peel off the backlight connector mylar

Step 2. Disconnect the lighting bar cable from the system board and then remove the lightingbar.

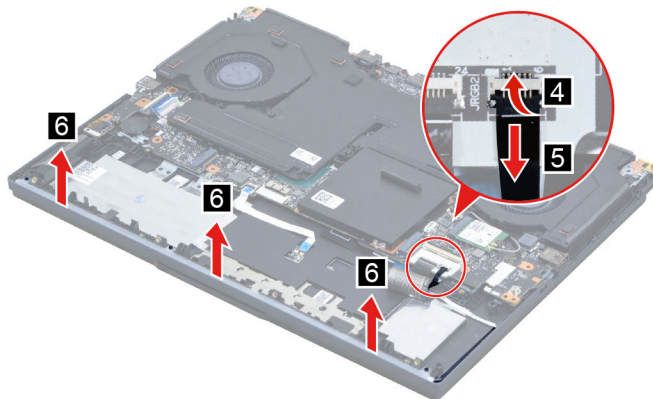


Figure 17. Remove the lightingbar

Go to <https://support.lenovo.com/partslookup> to look up the Lenovo part numbers of the following replacement parts:

- Lightingbar
- Backlight connector mylar

Remove the Wi-Fi card

Make sure the following FRU (or CRU) has been removed.

“Remove the lower case” on page 29

- Step 1. Remove the SSD plate (L). For details, see “Remove the solid-state drive (SSD) plate (L or R)” on page 30.
- Step 2. Detach the main and auxiliary antenna cable connectors. Remove one screw and then remove the Wi-Fi card by pulling it away from the slot.

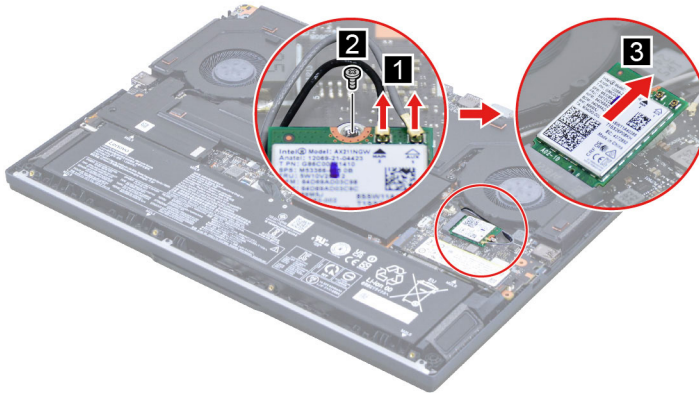


Figure 18. Remove the Wi-Fi card

Screw specifications	Number of screws	Torque force (kgf.cm)
M2 x L1.8	1	1.85 ± 0.15

Go to <https://support.lenovo.com/partslookup> to look up the Lenovo part number of the following replacement part:

Wi-Fi card

Remove the memory module

Make sure the following FRU (or CRU) has been removed.

“Remove the lower case” on page 29

- Step 1. Disconnect the battery pack cable from the system board.

Attention: Use your fingernails to pull the connector to unplug it. Do not pull the cable.

- Step 2. Remove the memory module shielding.

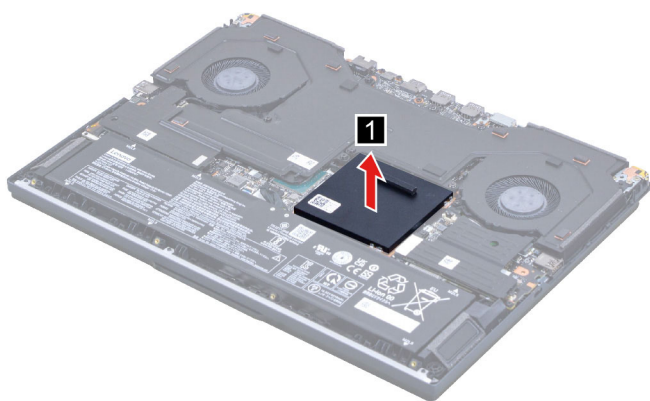


Figure 19. Remove the memory module shielding

Step 3. Release the latches on both edges of the socket at the same time. Then, remove the memory module.

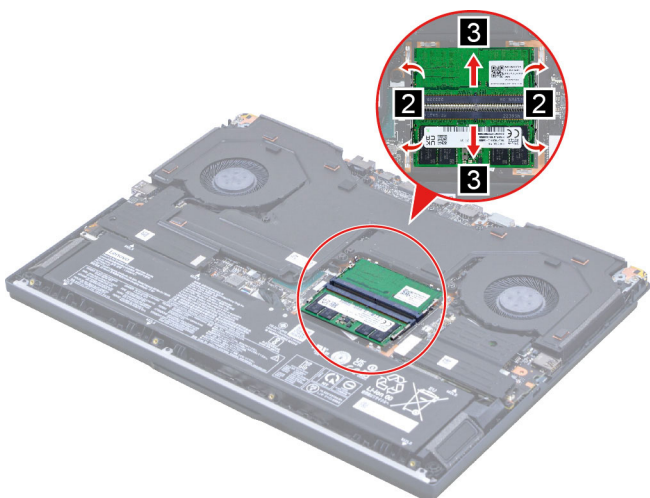


Figure 20. Remove the memory module

Go to <https://support.lenovo.com/partslookup> to look up the Lenovo part numbers of the following replacement parts:

Memory module

Memory module shielding

Remove the DC-in bracket

Make sure the following FRU (or CRU) has been removed.

“Remove the lower case” on page 29

Step 1. Disconnect the battery pack cable from the system board.

Attention: Use your fingernails to pull the connector to unplug it. Do not pull the cable.

Step 2. Remove one screw and then remove the DC-in bracket.

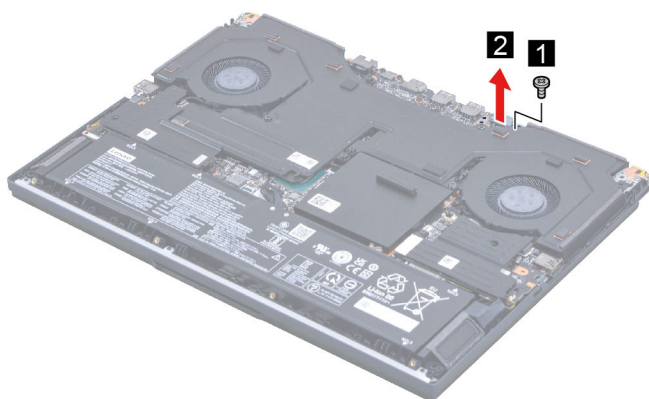


Figure 21. Remove the DC-in bracket

Screw specifications	Number of screws	Torque force (kgf.cm)
M2 x L6	1	1.85 ± 0.15

Go to <https://support.lenovo.com/partslookup> to look up the Lenovo part number of the following replacement part:

DC-in bracket

Remove the thermal module

Make sure the following FRUs (or CRUs) have been removed.

“Remove the lower case” on page 29

“Remove the solid-state drive (SSD) plate (L or R)” on page 30

Note: Place the computer on a level table. After removing the thermal module, place it horizontally on the table. Make sure that the side of the thermal module that touches the liquid metal is facing upwards to prevent the liquid metal from flowing onto other components.

Step 1. Detach the thermal module cable connectors and then remove four screws.

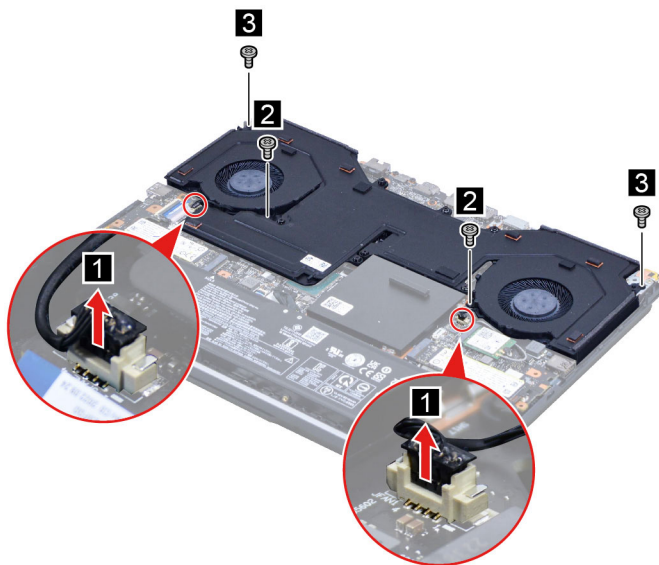


Figure 22. Detach the thermal module cable connectors and remove four screws

Screw specifications	Number of screws	Torque force (kgf.cm)
M2 x L5	2	1.85 ± 0.15
M2.5 x L7	2	3.0 ± 0.15

Step 2. Loosen six screws and then remove the thermal module.

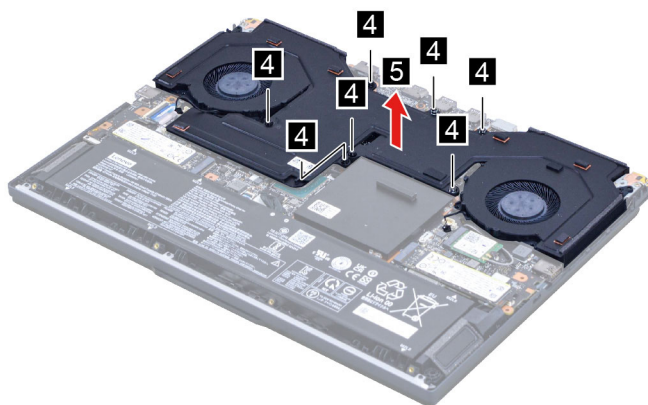


Figure 23. Remove the thermal module

Note: After removing the thermal module, it is recommended to supplement a little liquid metal. Refer to “Remove or apply the liquid metal” on page 45 for specific steps of how to apply the clean liquid metal.

Go to <https://support.lenovo.com/partslookup> to look up the Lenovo part number of the following replacement part:

Thermal module

Related topics

“Handling thermal interface materials ” on page 28

Remove the CMOS battery

Make sure the following FRUs (or CRUs) have been removed.

“Remove the lower case” on page 29

- Step 1. Remove the SSD plate (R) and then remove the SSD. For details, see “Remove the solid-state drive (SSD) plate (L or R)” on page 30 and “Remove the solid-state drive (SSD)” on page 32.
- Step 2. Detach the CMOS battery cable connector and then remove the CMOS battery.

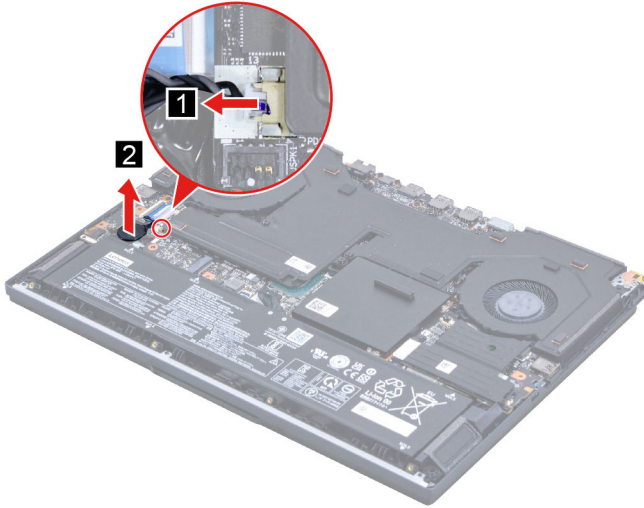


Figure 24. Remove the CMOS battery

Go to <https://support.lenovo.com/partslookup> to look up the Lenovo part number of the following replacement part:

CMOS battery

Remove the I/O board

Make sure the following FRUs (or CRUs) have been removed.

“Remove the lower case” on page 29

- Step 1. Remove the SSD plate (R) and then remove the SSD. For details, see “Remove the solid-state drive (SSD) plate (L or R)” on page 30 and “Remove the solid-state drive (SSD)” on page 32.
- Step 2. Disconnect the I/O board cable from the I/O board.

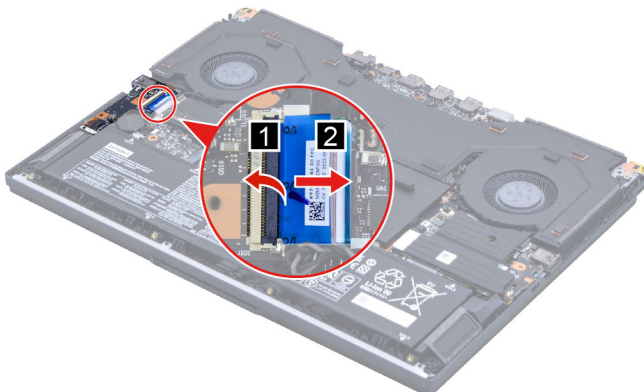


Figure 25. Disconnect the I/O board cable from the I/O board

- Step 3. Remove one screw and then remove the I/O board.

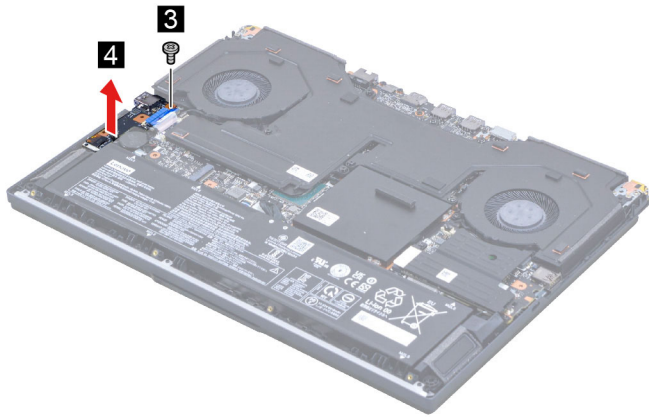


Figure 26. Remove the I/O board

Screw specifications	Number of screws	Torque force (kgf.cm)
M2 x L3.5	1	1.85 ± 0.15

Go to <https://support.lenovo.com/partslookup> to look up the Lenovo part number of the following replacement part:

I/O board

Remove the system board hook

Make sure the following FRUs (or CRUs) have been removed.

“Remove the lower case” on page 29

Step 1. Disconnect the battery pack cable from the system board.

Attention: Use your fingernails to pull the connector to unplug it. Do not pull the cable.

Step 2. Remove one screw and then remove the system board hook.

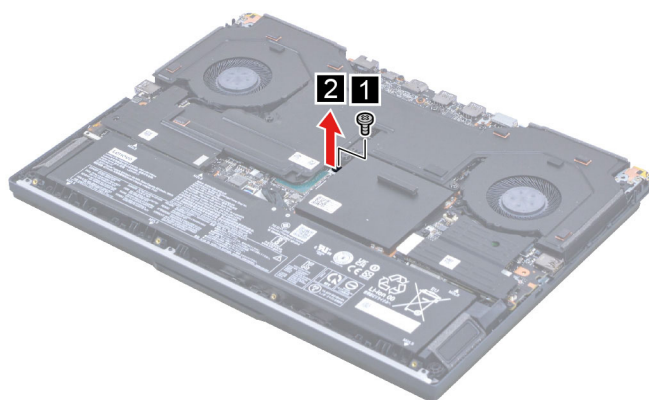


Figure 27. Remove the system board hook

Screw specifications	Number of screws	Torque force (kgf.cm)
M2 x L5	1	1.85 ± 0.15

Go to <https://support.lenovo.com/partslookup> to look up the Lenovo part number of the following replacement part:

System board hook

Remove the system board and the I/O board cable

Make sure the following FRUs (or CRUs) have been removed.

- “Remove the lower case” on page 29
- “Remove the solid-state drive (SSD) plate (L or R)” on page 30
- “Remove the solid-state drive (SSD)” on page 32
- “Remove the solid-state drive (SSD) stand off” on page 33
- “Remove the battery pack ” on page 33
- “Remove the Wi-Fi card” on page 37
- “Remove the memory module” on page 37
- “Remove the DC-in bracket” on page 38
- “Remove the thermal module” on page 39

Step 1. Disconnect cables connected to the system board.

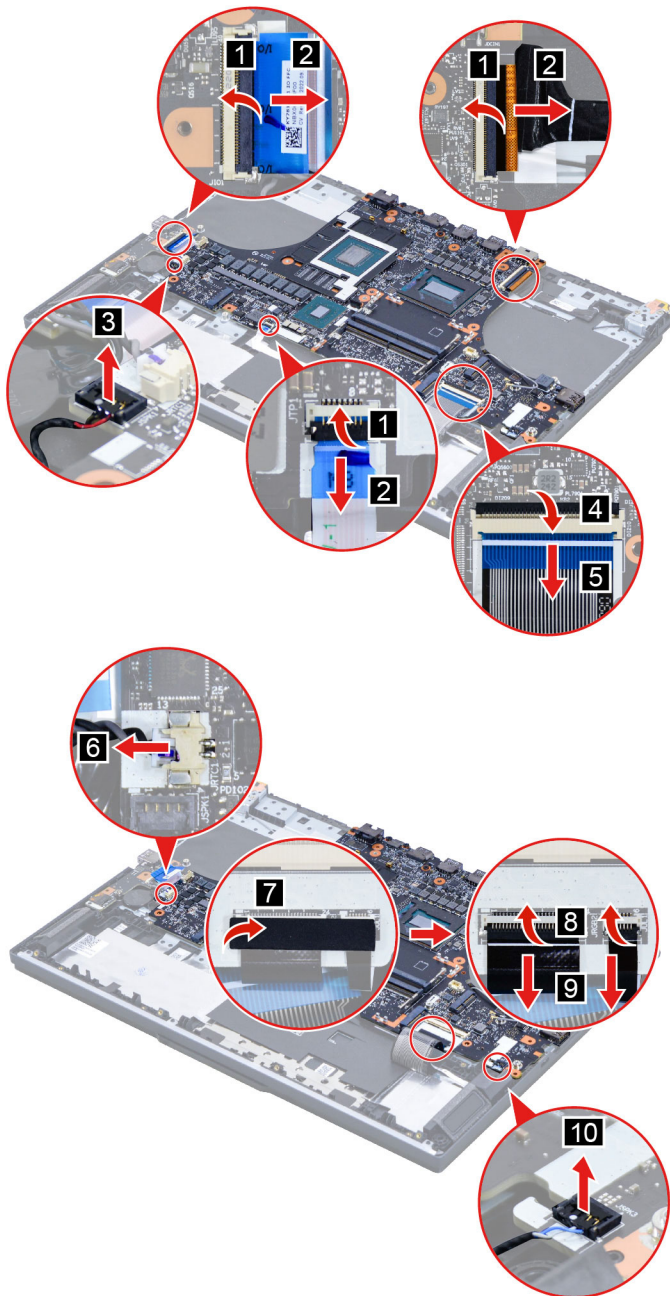


Figure 28. Disconnect cables connected to the system board

Step 2. Remove four screws and then remove the system board carefully.

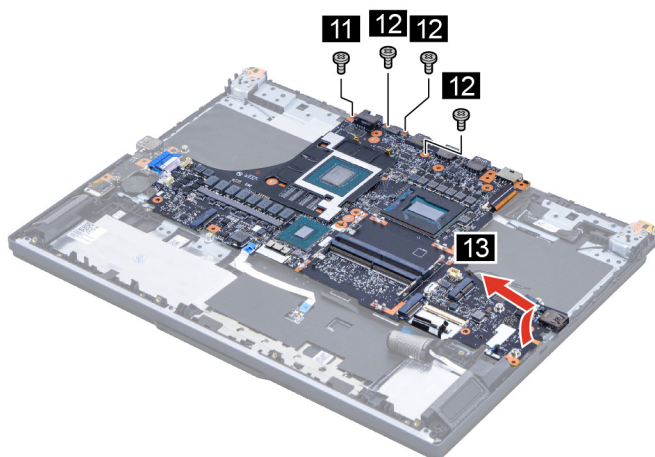


Figure 29. Remove four screws and remove the system board

Screw specifications	Number of screws	Torque force (kgf.cm)
M2 x L5	3	1.85 ± 0.15
M2 x L6	1	1.85 ± 0.15

Step 3. Remove the I/O board cable from the system board.

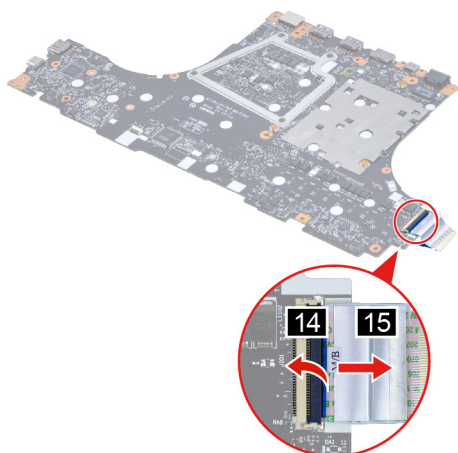


Figure 30. Remove the I/O board cable from the system board

Go to <https://support.lenovo.com/partslookup> to look up the Lenovo part numbers of the following replacement parts:

System board

I/O board cable

Related topics

“Handling thermal interface materials ” on page 28

Remove or apply the liquid metal

Liquid metal is applied as thermal interface material between the surfaces of the CPU die and the heat sink. Sometimes when you examine the system board, you may need to remove or apply the liquid metal.

If the system board has no defects, you only need to supplement some liquid metal.

If the system board is defective, you need to completely remove the original liquid metal before returning it to the Reverse Hub for RMA. When the system board has been replaced, you need to apply the clean liquid metal.

Before removing or applying the liquid metal, make sure the following FRUs (or CRUs) have been removed.

“Remove the lower case” on page 29

“Remove the solid-state drive (SSD) plate (L or R)” on page 30

“Remove the solid-state drive (SSD)” on page 32

“Remove the battery pack ” on page 33

“Remove the thermal module” on page 39

Attention:

Be sure to wear the antistatic gloves for protecting you and your computer.

The sponge should be replaced only when it is stained or damaged.

Liquid metal is electrically conductive. Make sure the liquid metal only be applied on the CPU die surface within the sponge. Clean the liquid metal immediately when it was accidentally spilled on the system board.

Liquid metal should only be applied to CPU. Do not use it on GPU or any other components.

Liquid metal service tools

The following table lists tools for removing or applying the liquid metal. These tools are provided in a liquid metal service kit. Prepare them when the liquid metal needs to be removed or applied.

Table 5. Liquid metal service tools

Service tool	Quantity
Liquid metal injector	1
Needle	1
Brush	2
Cleaning solution	1
Wet and dry wipes	3
Sponge for Intel CPU	2
Sponge for AMD CPU	2
Straw	1
Protection card	2
Antistatic gloves	1

Note: The protection card has two holes in different shapes. The rectangle hole is for the Intel CPU, and the T-shaped hole is for the AMD CPU.

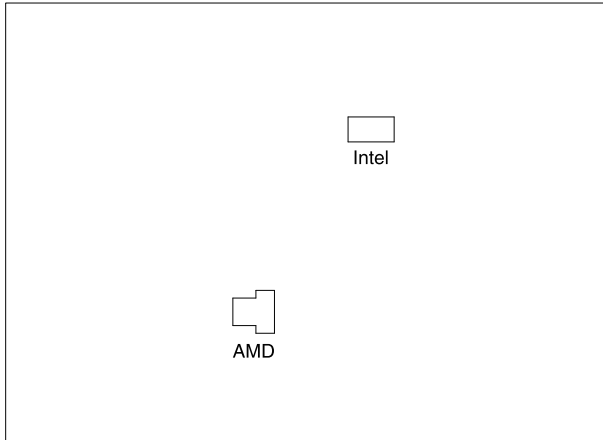


Figure 31. The protection card

Remove the original liquid metal

Note: The illustrations are for your reference. The Intel and AMD CPU are different in shape.

Step 1. Put the protection card to avoid other components being stained by the liquid metal.

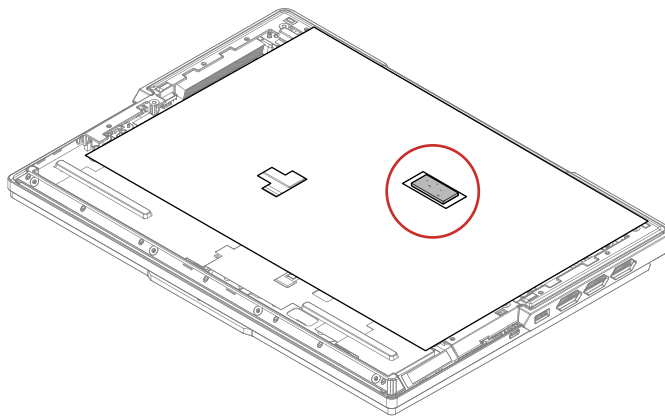


Figure 32. Put the protection card

Step 2. Drop about 2 to 3 drips of cleaning solution on the CPU die surface.

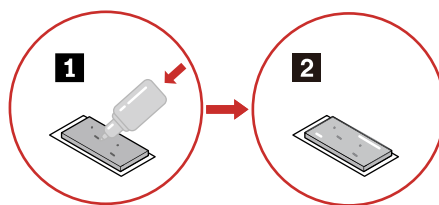


Figure 33. Drop some drips of cleaning solution

Step 3. Use the brush to gather the original liquid metal into a ball.

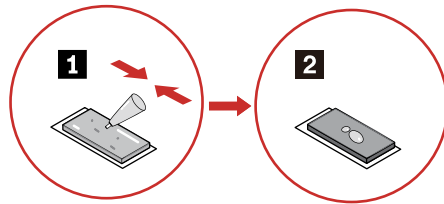


Figure 34. Gather the original liquid metal into a ball

Step 4. Use the straw to draw the liquid metal as much as possible.

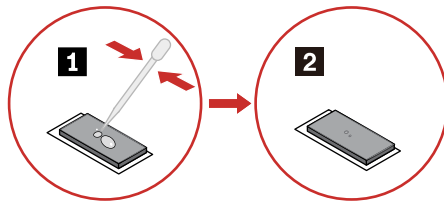


Figure 35. Use the straw to draw the liquid metal

Step 5. Use the wet wipe to remove the residual liquid metal, and use the dry wipe to clean the CPU die surface.

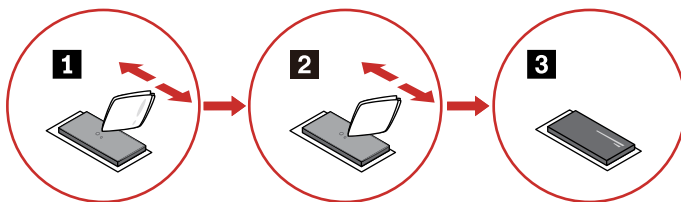


Figure 36. Use wipes to clean up the CPU die surface

Step 6. Take the protection card away.

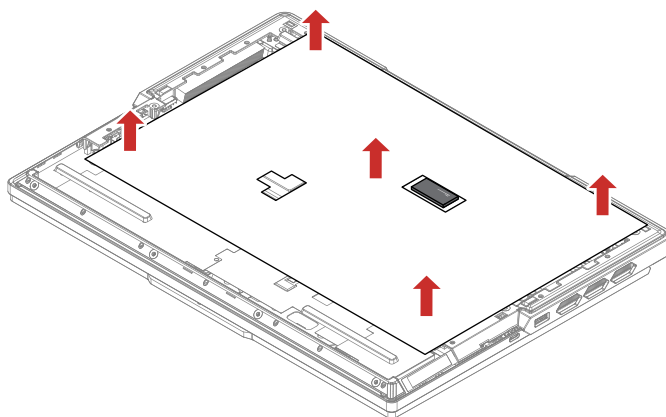


Figure 37. Take the protection card away

Step 7. Tear the original sponge off.

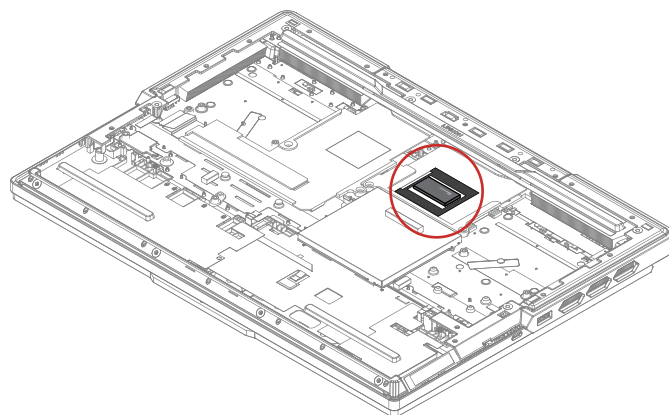


Figure 38. Locate the sponge

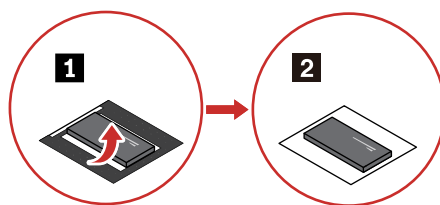


Figure 39. Tear the original sponge off

Apply the clean liquid metal

Note: The illustrations are for your reference. The Intel and AMD CPU are different in shape.

Step 1. Stick a new sponge around the CPU.

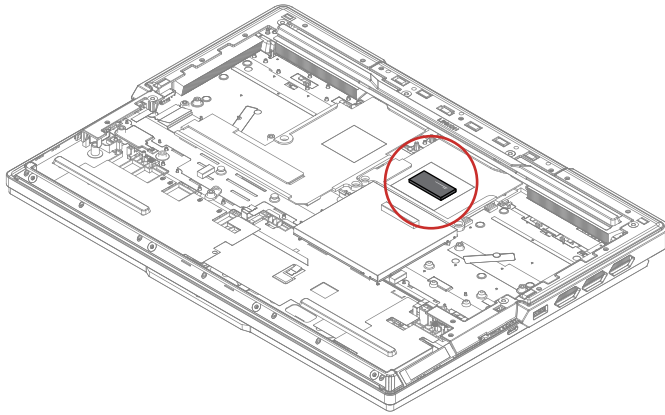


Figure 40. Locate the CPU

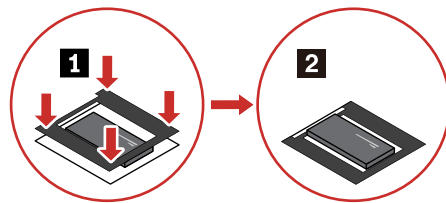


Figure 41. Stick a new sponge

Step 2. Put the protection card to avoid other components being stained by the liquid metal.

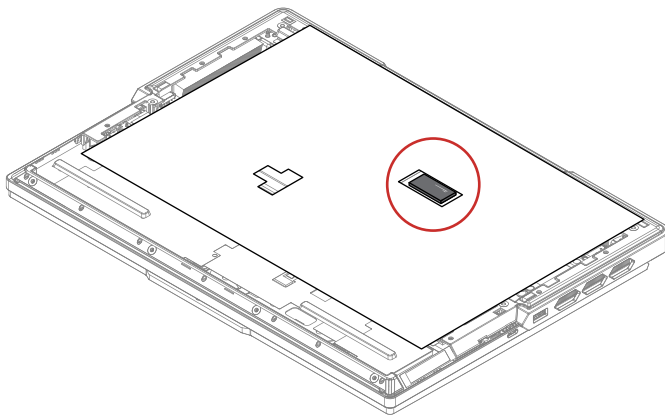


Figure 42. Put the protection card

Step 3. Unscrew the cap of the liquid metal injector. Screw the needle into the injector.

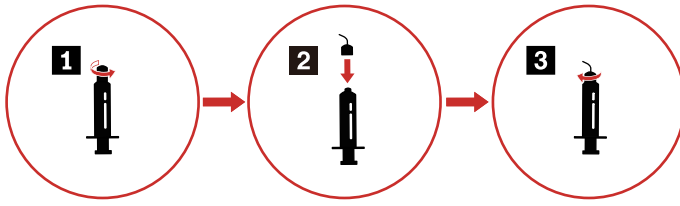


Figure 43. Screw the needle into the injector

- Step 4. Squeeze the clean liquid metal out on the CPU die surface. Use a new brush to spread the liquid metal thinly and evenly on the whole surface.

Note: It would be difficult to spread the liquid metal if the brush has cleaning solution residue. Therefore, you must use a new clean brush to spread the liquid metal.

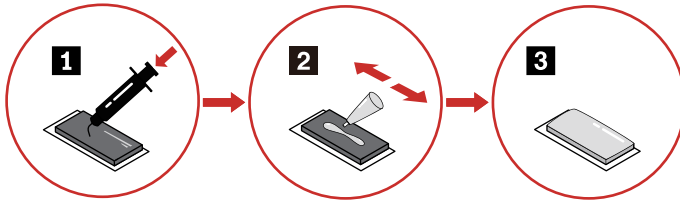


Figure 44. Apply the clean liquid metal

- Step 5. Take the protection card away.

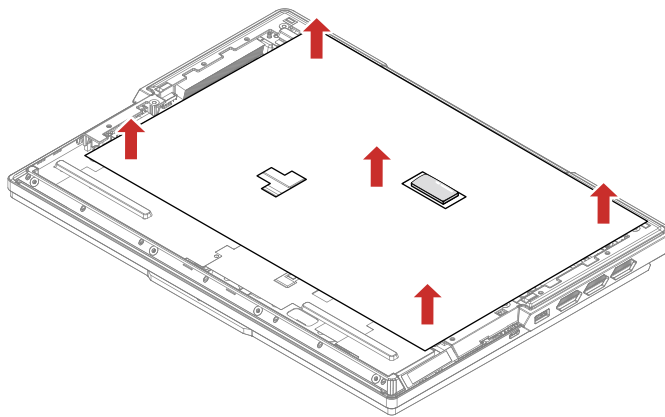


Figure 45. Take the protection card away

Use a Golden Key U1 tool to flash-write key id information

After replacing the system board and re-assembling the computer, use a pre-made Golden Key U1 tool to start the computer and flash-write the serial number (SN), machine type (MT), product name (PN), and UUID to the new system board.

The Golden Key U1 tool is prepared by running the U1 Update software on a FAT32-formatted USB thumb drive. Go to <https://support.lenovo.com/us/en/solutions/ht102004> for detailed instructions on how to create and use a Golden Key U1 tool.

Remove the antenna

Make sure the following FRUs (or CRUs) have been removed.

- “Remove the lower case” on page 29
- “Remove the solid-state drive (SSD) plate (L or R)” on page 30
- “Remove the solid-state drive (SSD)” on page 32
- “Remove the solid-state drive (SSD) stand off” on page 33
- “Remove the battery pack ” on page 33
- “Remove the Wi-Fi card” on page 37
- “Remove the memory module” on page 37
- “Remove the DC-in bracket” on page 38
- “Remove the thermal module” on page 39
- “Remove the system board and the I/O board cable” on page 43

Step 1. Remove the keyboard bracket mylar.

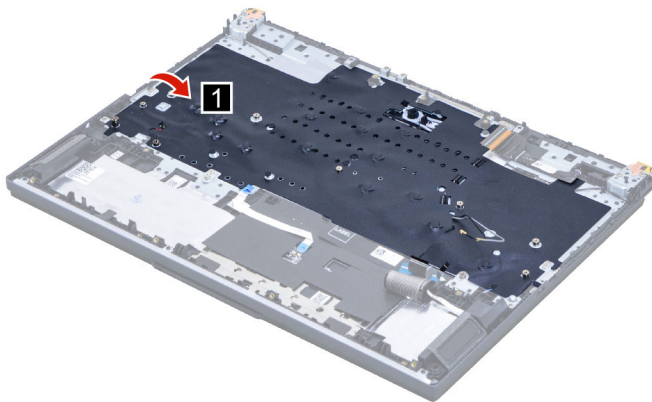


Figure 46. Remove the keyboard bracket mylar

Step 2. Remove the main and auxiliary antenna.

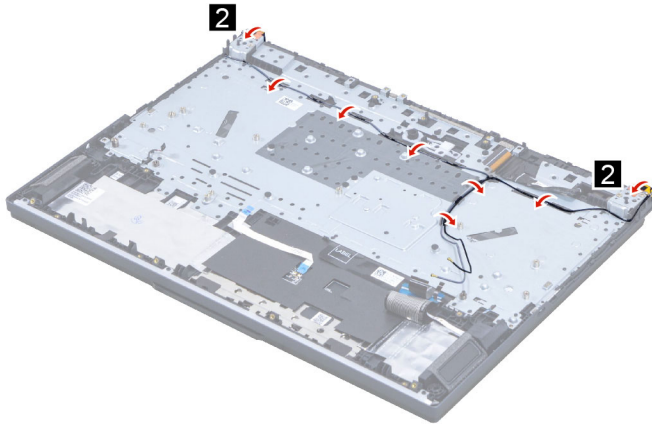


Figure 47. Remove the main and auxiliary antenna

Go to <https://support.lenovo.com/partslookup> to look up the Lenovo part numbers of the following replacement parts:

Antenna

Keyboard bracket mylar

Remove the strip cover

Make sure the following FRUs (or CRUs) have been removed.

- “Remove the lower case” on page 29
- “Remove the solid-state drive (SSD) plate (L or R)” on page 30
- “Remove the solid-state drive (SSD)” on page 32
- “Remove the solid-state drive (SSD) stand off” on page 33
- “Remove the battery pack ” on page 33
- “Remove the Wi-Fi card” on page 37
- “Remove the memory module” on page 37
- “Remove the DC-in bracket” on page 38
- “Remove the thermal module” on page 39
- “Remove the system board and the I/O board cable” on page 43

Step 1. Remove two screws.

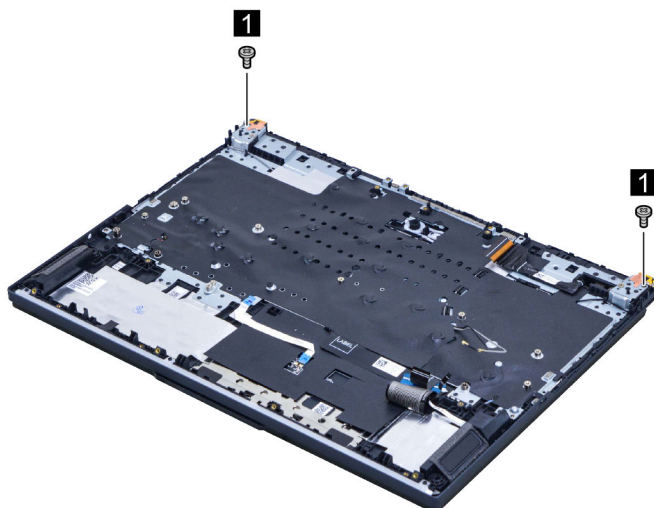


Figure 48. Remove two screws

Screw specifications	Number of screws	Torque force (kgf.cm)
M2.5 x L7	2	3.0 ± 0.15

Step 2. Remove the strip cover.



Figure 49. Remove the strip cover

Go to <https://support.lenovo.com/partslookup> to look up the Lenovo part number of the following replacement part:

Strip cover

Remove the LCD module

Make sure the following FRUs (CRUs) have been removed.

- “Remove the lower case” on page 29
- “Remove the solid-state drive (SSD) plate (L or R)” on page 30
- “Remove the solid-state drive (SSD)” on page 32
- “Remove the solid-state drive (SSD) stand off” on page 33
- “Remove the battery pack ” on page 33
- “Remove the Wi-Fi card” on page 37

- “Remove the memory module” on page 37
- “Remove the DC-in bracket” on page 38
- “Remove the thermal module” on page 39
- “Remove the system board and the I/O board cable” on page 43
- “Remove the strip cover” on page 53

Step 1. Remove four screws.

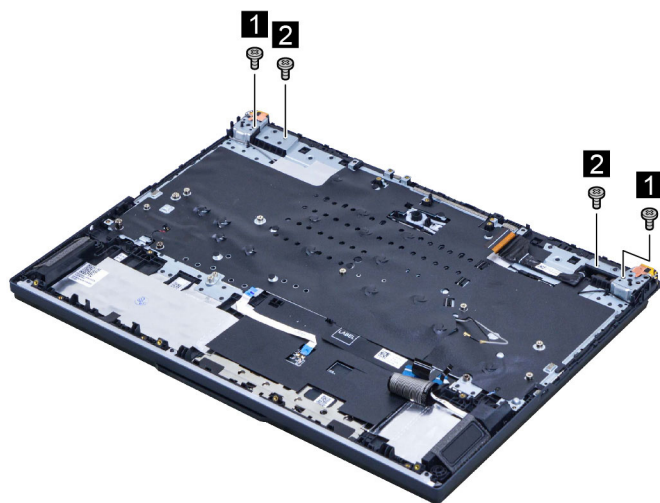


Figure 50. Remove four screws

Screw specifications	Number of screws	Torque force (kgf.cm)
M2 x L3.5	2	1.85 ± 0.15
M2.5 x L7	2	3.0 ± 0.15

Step 2. Remove two screws and then lift the LCD module.

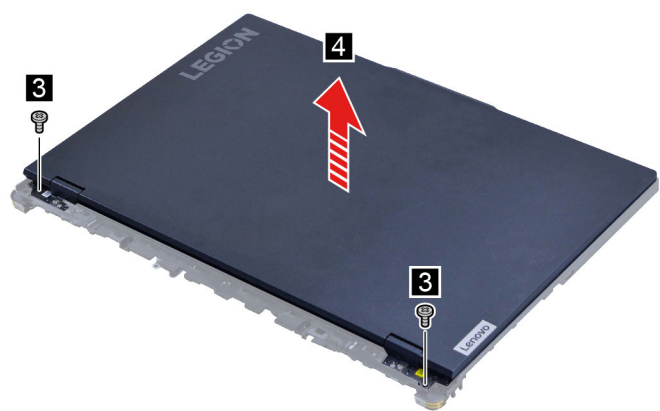


Figure 51. Lift the LCD module

Screw specifications	Number of screws	Torque force (kgf.cm)
M2.5 x L7	2	3.0 ± 0.15

Step 3. Take out the EDP cable and then remove the LCD module.



Figure 52. Take out the EDP cable and remove the LCD module

Remove ceramic keycaps from the replaced upper case (if installed by customers)

This computer model came with a factory-supplied keycap kit in the product package. The kit contains 4 ceramic keycaps, along with scissors and a detachment tool, that users can use to swap keys of the same shape and size. If the keyboard of the replaced upper case includes ceramic keycaps, remove them from the keyboard and return them to customers.

Note: The factory supplied 4, white, ceramic keycaps without printed legend. The 4 keycaps are of the same shape and size. They can be used to swap letter and numeric keys on the keyboard, though most users are likely to use them to swap the W, A, S, and D keys.

Step 1. Use a pair of tweezers to carefully lift up the upper left and upper right of the ceramic keycap.

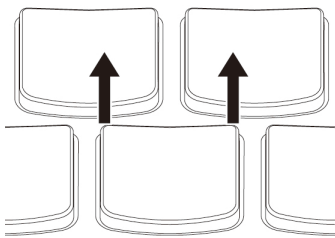


Figure 53. Remove the keycap by detaching from the upper corners

Step 2. Remove the keycap and collect all ceramic keycaps for returning to the customer.

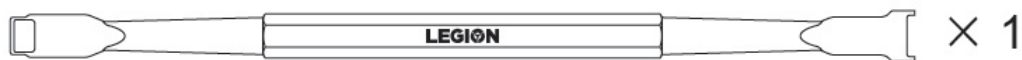
The keycap kit as a FRU

The keycap kit supplied with the computer is not covered by any warranty. If its items are damaged, customer can get the kit replaced by paying a service fee. The kit is available as a FRU and contains the following items:

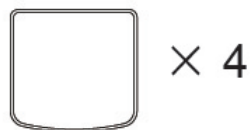
Ceramic keycaps × 4

Scissors × 8

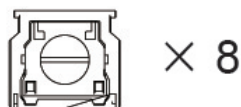
Double-sided detachment tool × 1



Two-sided detachment tool



Ceramic keycap



Scissors

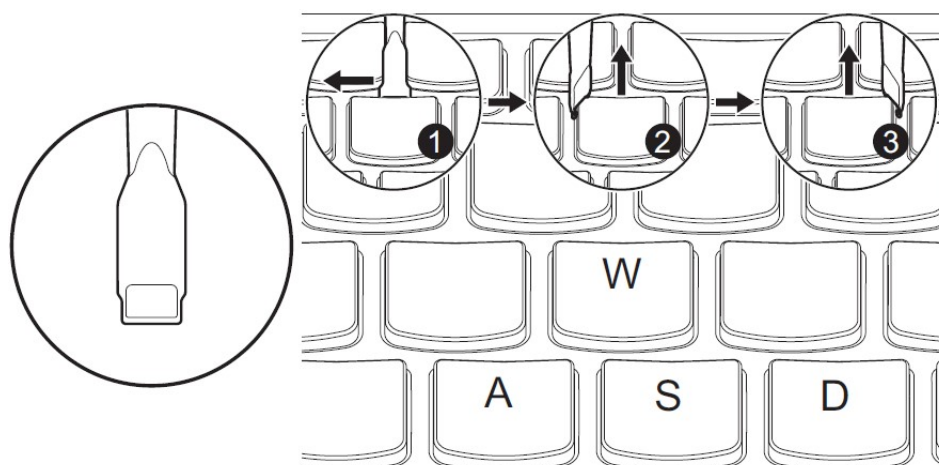
Figure 54. Keycap kit contents

Note: The scissors can only be used to replace those underneath keys W, A, S, and D. They are not compatible with other keys.

The kit also came with a printed instruction. Customers should be able to swap keys by following the instructions. The instructions are also provided below.

Remove a keycap

Step 1. Insert one end (with a hollow rectangle) of the detachment tool into the slot above the key.



Step 2. Slid the tool to the upper left corner of the key and carefully lift up the keycap.

Step 3. Slid the tool to the upper right corner of the key and carefully lift up the keycap.

Step 4. Carefully remove the keycap.

Install a keycap

Before installing a keycap, check the scissors mechanism and make sure it is not damaged.

Step 1. Install the lower edge of the keycap by pushing down it and then little upward.

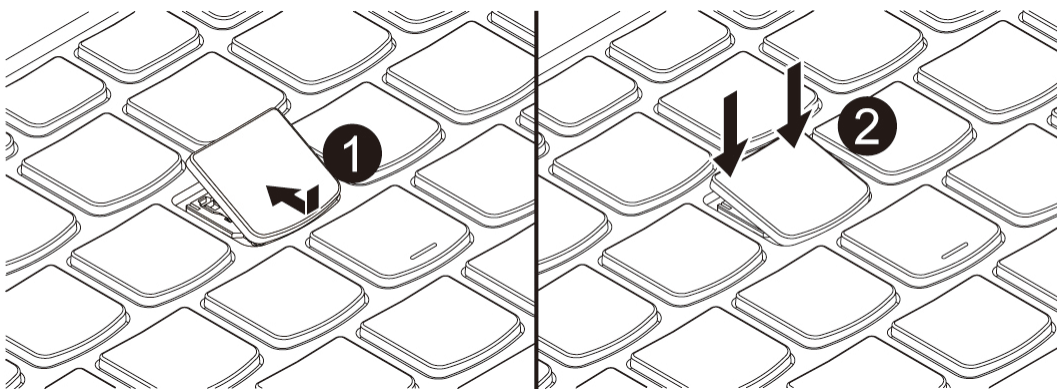


Figure 55. Install a new keycap

Step 2. Push down the upper edge of the keycap until it fits into place.

Note: Make sure the keycap is firmly installed and does not move easily.

Remove scissors

The scissors supplied in the keycap kit can only be used to replace those underneath keys W, A, S, and D.

Step 1. Use one end (with two prongs) of the detachment tool to detach the lower part of the scissors.

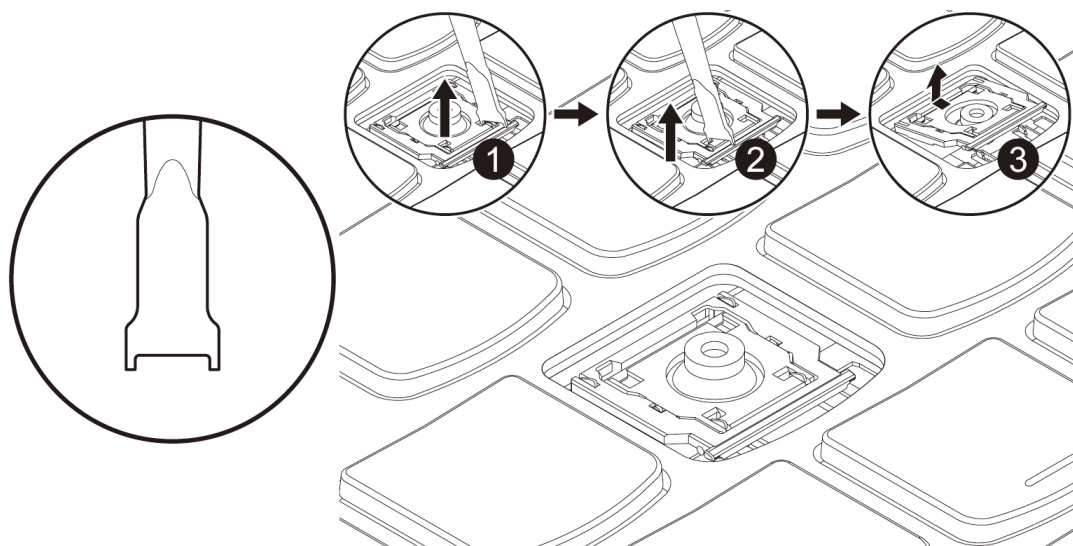


Figure 56. Remove damaged scissors

Step 2. Take the damaged scissors out.

Install new scissors

Step 1. Choose the right replacement scissors and make sure the damaged scissors are removed. The scissors underneath the keys W, A, S, and D are not compatible with those for other keys. Scissors supplied with the keycap kit can only be used to replace those underneath keys W, A, S, and D.

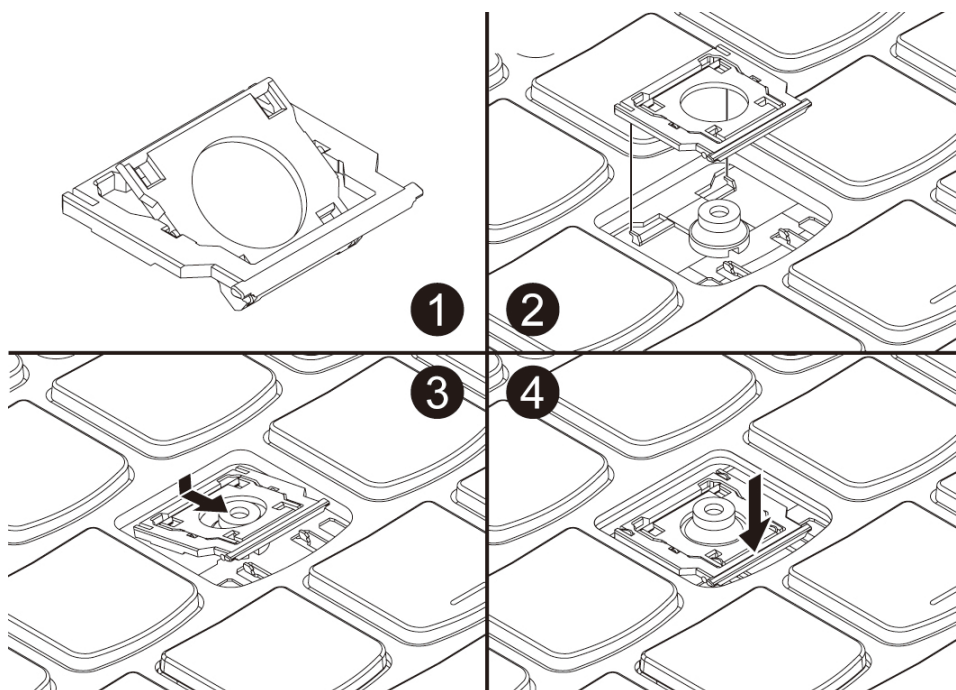


Figure 57. Install new scissors

- Step 2. Align the replacement scissors with the installation position.
- Step 3. Install the upper edge of the scissors by pushing it down and then a little inward.
- Step 4. Push down the lower part of the scissors until it fits into place.

Remove the upper case

Make sure the following FRUs (CRUs) have been removed.

- “Remove the lower case” on page 29
- “Remove the solid-state drive (SSD) plate (L or R)” on page 30
- “Remove the solid-state drive (SSD)” on page 32
- “Remove the solid-state drive (SSD) stand off” on page 33
- “Remove the battery pack ” on page 33
- “Remove the touchpad board cable” on page 34
- “Remove the speakers” on page 35
- “Remove the lightingbar (for selected models)” on page 36
- “Remove the Wi-Fi card” on page 37
- “Remove the memory module” on page 37
- “Remove the DC-in bracket” on page 38
- “Remove the thermal module” on page 39
- “Remove the CMOS battery” on page 40
- “Remove the I/O board” on page 41
- “Remove the system board hook” on page 42
- “Remove the system board and the I/O board cable” on page 43

“Remove the antenna” on page 52

“Remove the strip cover” on page 53

“Remove the LCD module” on page 54

Go to <https://support.lenovo.com/partslookup> to look up the Lenovo part number of the following replacement part:

Upper case

Disassemble the LCD module

The LCD module as a whole is not a FRU. Instead, it contains FRUs as its components. Before disassembling the LCD module, make sure it has been detached from the upper case.

Remove the LCD bezel

Make sure the following FRU (or CRU) have been removed.

“Remove the LCD module” on page 54

Step 1. Remove the LCD bezel.

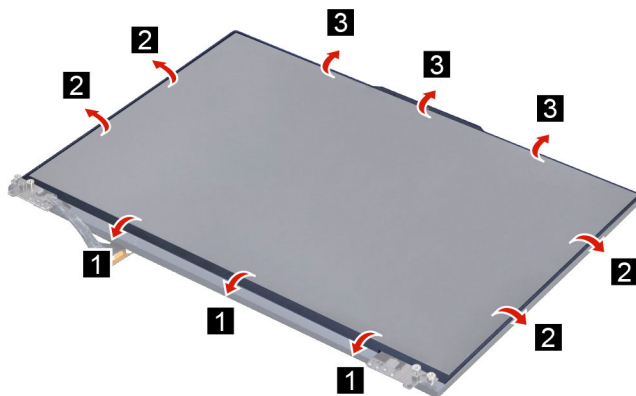


Figure 58. Remove the LCD bezel

Go to <https://support.lenovo.com/partslookup> to look up the Lenovo part number of the following replacement part:

LCD bezel

Remove the hinge cover

Make sure the following FRUs (or CRUs) have been removed.

“Remove the LCD module” on page 54

“Remove the LCD bezel” on page 60

Step 1. Remove the hinge cover.

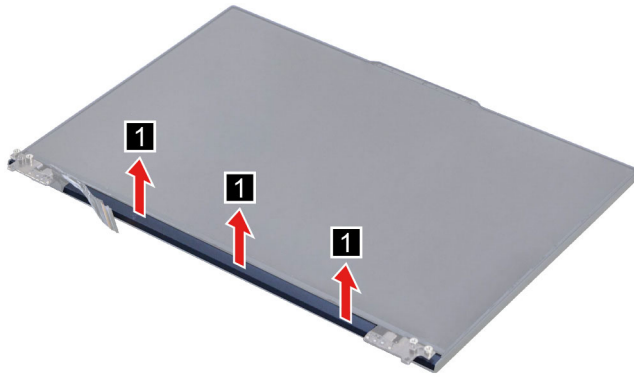


Figure 59. Remove the hinge cover

Go to <https://support.lenovo.com/partslookup> to look up the Lenovo part number of the following replacement part:

Hinge cover

Remove the LCD panel

Make sure the following FRUs (CRUs) have been removed.

“Remove the LCD module” on page 54

“Remove the LCD bezel” on page 60

“Remove the hinge cover” on page 60

Step 1. Disconnect the EDP cable from the sensor board and release the EDP cable.



Figure 60. Disconnect the EDP cable from the sensor board and release the EDP cable

Step 2. Remove the two pieces of removable tape with tweezers and then remove the LCD panel.

Note: The removable tape is not reusable. Replace it when replacing related FRUs.

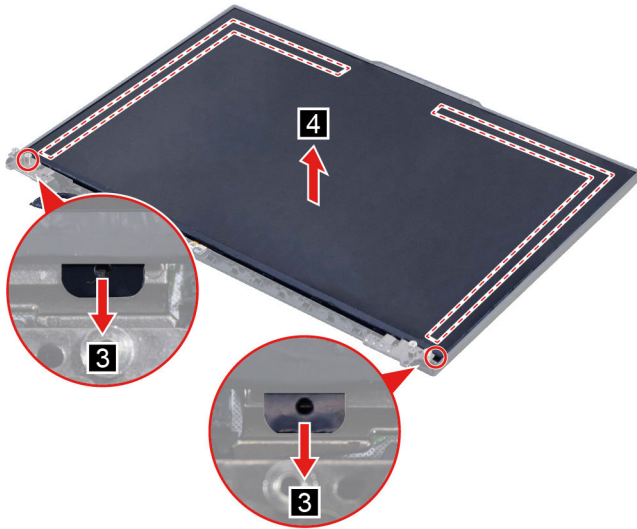


Figure 61. Remove the LCD panel

Notes: For LCD panel with the factory color calibration feature, do the following to install new color profiles:

1. Connect your computer to the network and close the X-Rite Color Assistant program.
2. Go to <https://pcsupport.lenovo.com/us/en/downloads/DS543953> to download the installation software. Double-click the EXE file and follow the on-screen instructions to finish the installation.
3. Go to C:\Program files (x86)\X-Rite Color Assistant and locate the ProfileUpdaterForDisplayReplacement.exe file. Double-click the EXE file. Follow the on-screen instructions to input the display serial number and click Submit. You can find the display serial number and instructions on a sticker fixed to the front of the new LCD part. When the new color profiles are installed successfully, a prompted window will be displayed.

Go to <https://support.lenovo.com/partslookup> to look up the Lenovo part numbers of the following replacement parts:

LCD panel

Removable tape

Remove the EDP cable

Make sure the following FRUs (CRUs) have been removed.

“Remove the LCD module” on page 54

“Remove the LCD bezel” on page 60

“Remove the hinge cover” on page 60

“Remove the LCD panel” on page 61

Step 1. Peel off the tape.



Figure 62. Peel off the tape

Step 2. Remove the EDP cable from the LCD panel.



Figure 63. Remove the EDP cable

Go to <https://support.lenovo.com/partslookup> to look up the Lenovo part numbers of the following replacement parts:

EDP cable

Removable tape

Remove the sensor board

Make sure the following FRUs (CRUs) have been removed.

“Remove the LCD module” on page 54

“Remove the LCD bezel” on page 60

“Remove the hinge cover” on page 60

“Remove the LCD panel” on page 61

Step 1. Peel off the conductive tape.

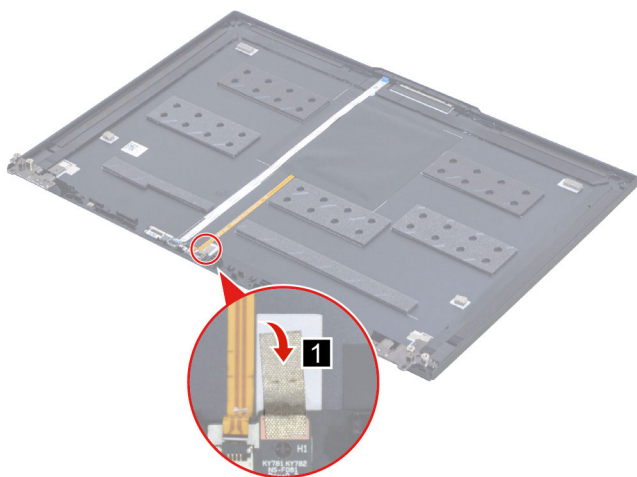


Figure 64. Peel off the conductive tape

Step 2. Disconnect cables connected to the sensor board and then remove the sensor board.

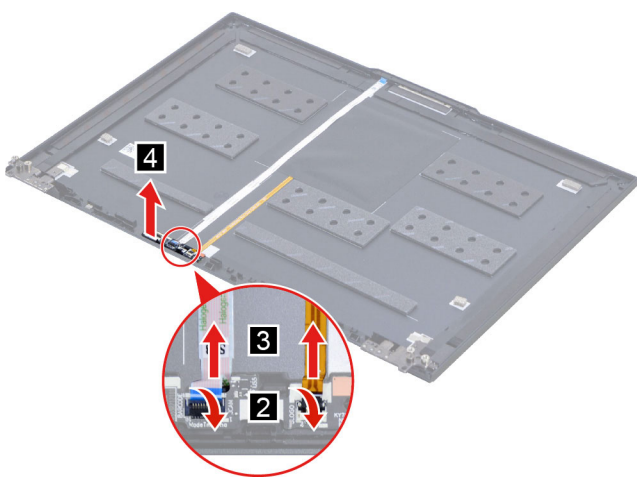


Figure 65. Remove the sensor board

Go to <https://support.lenovo.com/partslookup> to look up the Lenovo part numbers of the following replacement parts:

- Sensor board
- Conductive tape
- Removable tape

Remove the camera bracket

Make sure the following FRUs (CRUs) have been removed.

- “Remove the LCD module” on page 54
- “Remove the LCD bezel” on page 60
- “Remove the hinge cover” on page 60
- “Remove the LCD panel” on page 61

Step 1. Remove two screws and then remove the camera bracket.

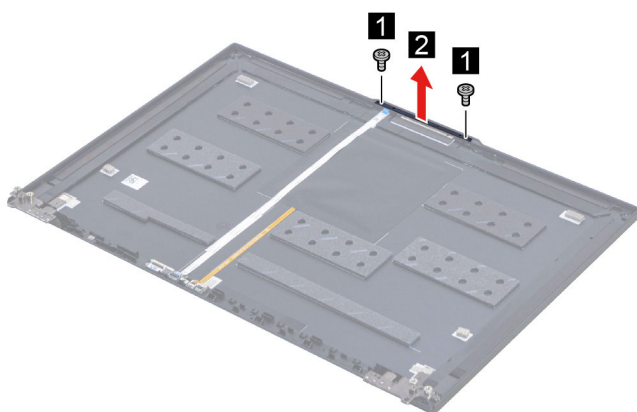


Figure 66. Remove the camera bracket

Screw specifications	Number of screws	Torque force (kgf.cm)
M1.6 x L2.4	2	1.2 ± 0.15

Go to <https://support.lenovo.com/partslookup> to look up the Lenovo part numbers of the following replacement parts:

Camera bracket

Removable tape

Remove the microphone rubber

Make sure the following FRUs (CRUs) have been removed.

“Remove the LCD module” on page 54

“Remove the LCD bezel” on page 60

“Remove the hinge cover” on page 60

“Remove the LCD panel” on page 61

“Remove the camera bracket” on page 64

Step 1. Remove the microphone rubber.

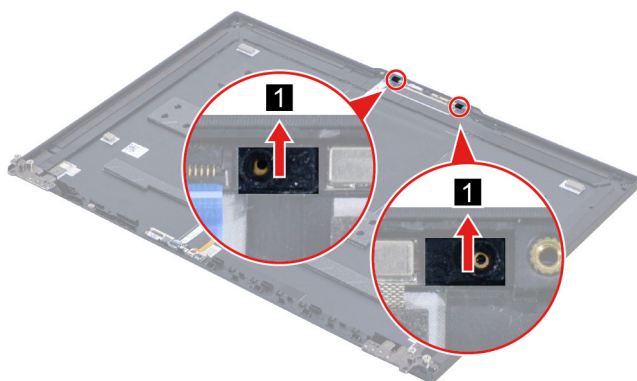


Figure 67. Remove the microphone rubber

Go to <https://support.lenovo.com/partslookup> to look up the Lenovo part numbers of the following replacement parts:

Microphone rubber

Removable tape

Remove the camera cable

Make sure the following FRUs (CRUs) have been removed.

“Remove the LCD module” on page 54

“Remove the LCD bezel” on page 60

“Remove the hinge cover” on page 60

“Remove the LCD panel” on page 61

“Remove the camera bracket” on page 64

Step 1. Remove the camera cable from the camera board and the sensor board.

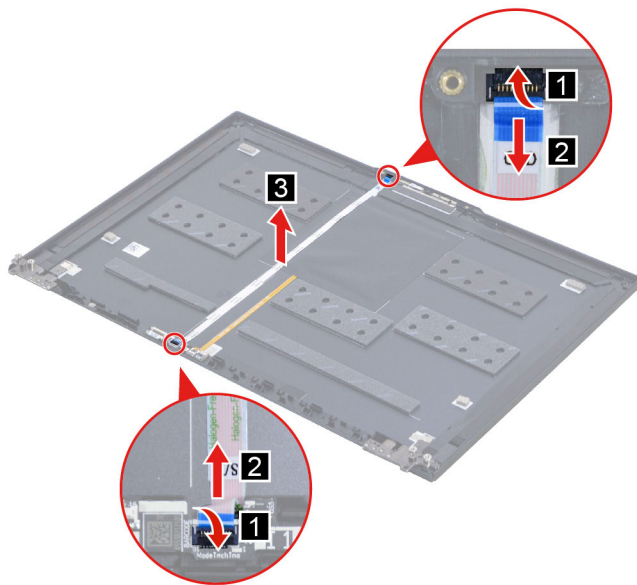


Figure 68. Remove the camera cable

Go to <https://support.lenovo.com/partslookup> to look up the Lenovo part numbers of the following replacement parts:

Camera cable

Removable tape

Remove the camera board

Make sure the following FRUs (CRUs) have been removed.

“Remove the LCD module” on page 54

“Remove the LCD bezel” on page 60

“Remove the hinge cover” on page 60

“Remove the LCD panel” on page 61

“Remove the camera bracket” on page 64

“Remove the microphone rubber” on page 65

Step 1. Disconnect camera cable from the camera board and then remove the camera board.

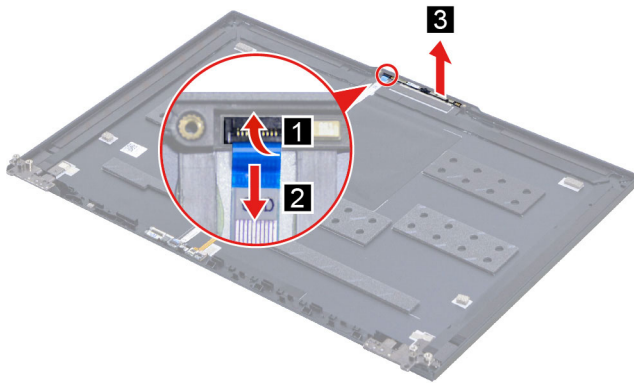


Figure 69. Remove the camera board

Go to <https://support.lenovo.com/partslookup> to look up the Lenovo part numbers of the following replacement parts:

Camera board

Removable tape

Remove the LCD cover

Make sure the following FRUs (CRUs) have been removed.

“Remove the LCD module” on page 54

“Remove the LCD bezel” on page 60

“Remove the hinge cover” on page 60

“Remove the LCD panel” on page 61

“Remove the EDP cable” on page 62

“Remove the sensor board” on page 63

“Remove the camera bracket” on page 64

“Remove the microphone rubber” on page 65

“Remove the camera cable” on page 66

“Remove the camera board” on page 66

You can get the LCD cover after removing the FRUs (CRUs) above.

Go to <https://support.lenovo.com/partslookup> to look up the Lenovo part number of the following replacement part:

LCD cover

Appendix A. Label locations

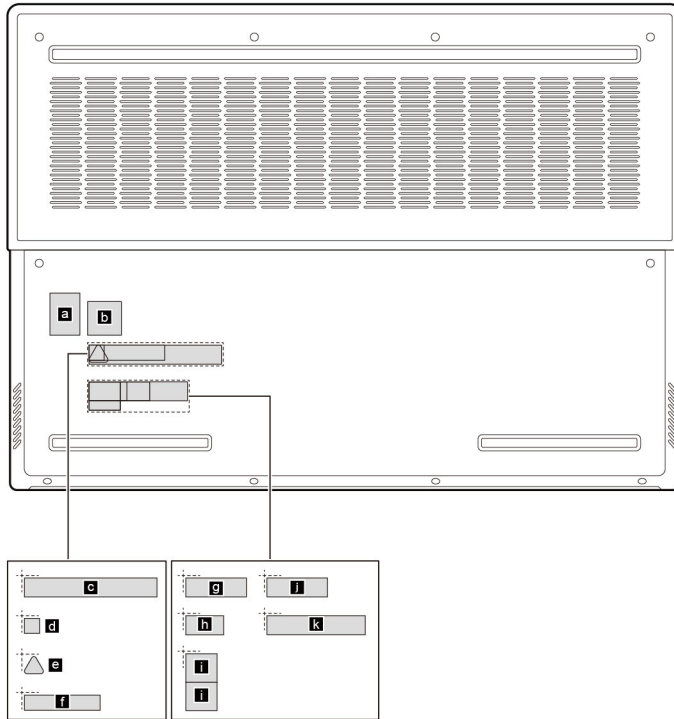


Figure 70. Label layout on the back side of the base cover

Labels attached to the base cover are country/region specific. Make sure to apply the appropriate labels to the replacement base cover.

Table 6. All base cover labels

Label	Label name	Applied country/region	Label dimensions
a	OS label	All	16.077 mm x 22.501 mm
b	CO ₂ Offset Service label	All	18 mm x 18 mm
c	Country label	TW	70 mm x 10 mm
d		Malaysia	8 mm x 8 mm
e		Vietnam	10 mm x 9 mm
f		Belarus	40 mm x 8 mm
g	WL/BT label	Argentina	32 mm x 10 mm
h		South Africa	20 mm x 10 mm
i		Brazil	16.5 mm x 15 mm
j		TW	32 mm x 10 mm
k		JP	52 mm x 10 mm

Trademarks

LENOVO and the LENOVO logo are trademarks of Lenovo.

All other trademarks are the property of their respective owners. © 2024 Lenovo.

Lenovo