

Alienware 34 240Hz QD-OLED Gaming Monitor AW3425DW

Teardown Instructions

Notes, cautions, and warnings

- ① **NOTE:** A NOTE indicates important information that helps you make better use of your product.
- ⚠ **CAUTION:** A CAUTION indicates either potential damage to hardware or loss of data and tells you how to avoid the problem.
- ⚠ **WARNING:** A WARNING indicates a potential for property damage, personal injury, or death.

Contents

Safety Instructions	4
Before working inside your monitor	4
After working inside your monitor	4
Disassembly and reassembly	5
Recommended tools	5
Screw list	5
Stand	6
Removing the stand	6
Installing the stand	7
Back Cover	8
Removing the back cover	8
Installing the back cover	10
Metal shield	12
Removing the metal shield	12
Installing the metal shield	15
Interface board	17
Removing the interface board	17
Installing the interface board	20
DC-DC board	23
Removing the DC-DC board	23
Installing the DC-DC board	25
Power board	27
Removing the power board	27
Installing the power board	29
Regulatory information	31
FCC notices (U.S. only) and other regulatory information	31
EU product database for energy label and product information sheet	31
Contacting Dell	32

Safety Instructions

Use the following safety guidelines to protect your monitor from potential damage and to ensure your personal safety. Unless otherwise noted, each procedure included in this document assumes that you have read the safety information that shipped with your monitor.

- ① **NOTE:** Before using the monitor, read the safety information that is shipped with your monitor and printed on the product. Keep the documentation at a secure location for future reference.
- ⚠ **WARNING:** Use of controls, adjustments or procedures other than those specified in this documentation may result in exposure to shock, electrical hazards and/or mechanical hazards.
- ⚠ **CAUTION:** The possible long-term effect of listening to audio at high volume through the headphones (on monitor that support it) may cause damage to your hearing ability.
- Place the monitor on a solid surface and handle it carefully.
 - The screen is fragile and can be damaged if dropped or hit with a sharp object.
 - Ensure that your monitor is electrically rated to operate with the AC power available in your location.
 - Keep the monitor in room temperature. Excessive cold or hot conditions can have an adverse effect on the QD-OLED of the display.
 - Connect the power cable from the monitor to a wall outlet that is near and accessible. See *Connecting the cables* in the User's Guide of AW3425DW.
- Do not place and use the monitor on a wet surface or near water.
- Do not subject the monitor to severe vibration or high impact conditions. For example, do not place the monitor inside a car trunk.
- Unplug the monitor when it is going to be left unused for an extended period.
- To avoid electric shock, do not attempt to remove any cover or touch the inside of the monitor.
- Read these instructions carefully. Keep this document for future reference. Follow all warnings and instructions marked on product.
- Certain monitors can be wall mounted using the VESA mount that is sold separately. Ensure to use the correct VESA specifications as mentioned in the wall mounting section of the User's Guide.

For information on safety instructions, see the Safety, Environmental and Regulatory Information (SERI) document that is shipped with your monitor.

Before working inside your monitor

Steps

1. Save and close all open files and exit all open applications.
2. Turn off your monitor.
3. Disconnect your monitor and all attached devices from their electrical outlets.
4. Disconnect all attached network devices and peripherals, such as keyboard, mouse, and dock from your monitor.
 - ⚠ **CAUTION:** To disconnect a network cable, first unplug the cable from your monitor and then unplug the cable from the network device.
5. Remove any media card and optical disc from your monitor, if applicable.

After working inside your monitor

- ⚠ **CAUTION:** Leaving stray or loose screws inside your monitor may severely damage your monitor.

Steps

1. Replace all screws and ensure that no stray screws remain inside your monitor.
2. Connect any external devices, peripherals, or cables you removed before working inside your monitor.
3. Replace any media cards, discs, or any other parts that you removed before working inside your monitor.
4. Connect your monitor and all attached devices to the respective electrical outlets.
5. Turn on your monitor.

Disassembly and reassembly

△ **CAUTION:** The information in this section is intended for authorized service technicians in the EMEA region. Dell prohibits users from disassembling the monitor, and any damage caused by unauthorized servicing will not be covered under the warranty.

Recommended tools







The procedures in this document may require the following tools:

- Phillips screwdriver #0
- Phillips screwdriver #2
- Plastic scribe

Screw list

- ① **NOTE:** When removing screws from a component, it is recommended to note the screw type, the quantity of screws, and then place them in a screw storage box. This is to ensure that the correct number of screws and correct screw type is restored when the component is replaced.
- ① **NOTE:** Some computers have magnetic surfaces. Ensure that the screws are not left attached to such surfaces when replacing a component.
- ① **NOTE:** Screw color may vary with the configuration ordered.

Table 1. Screw list.

Component	Screw type	Quantity	Screw image
Back Cover	M4x10	4	
Metal shield	M3x3	4	
Fan	M3x9	3	
Interface board	M3x9	4	
Power board	M3x9	4	
DC-DC board	M3x9	1	

Stand

Removing the stand

Prerequisites

1. Follow the procedure in [Before working inside your monitor.](#)
- △ **CAUTION:** To prevent scratches on the screen when removing the stand, ensure that the monitor is placed on a soft surface and handle it carefully.
 - △ **CAUTION:** The following steps are specifically for removing the stand that is shipped with your monitor. If you are removing a stand that you purchased from any other source, follow the setup instructions that are included with the stand.
 - ① **NOTE:** Before removing the stand, ensure that you have disconnected all the cables from the monitor.

Steps

1. Set the monitor on a clean, flat surface with a soft cloth or cushion underneath.
2. Press and hold the stand release button at the back of the display.

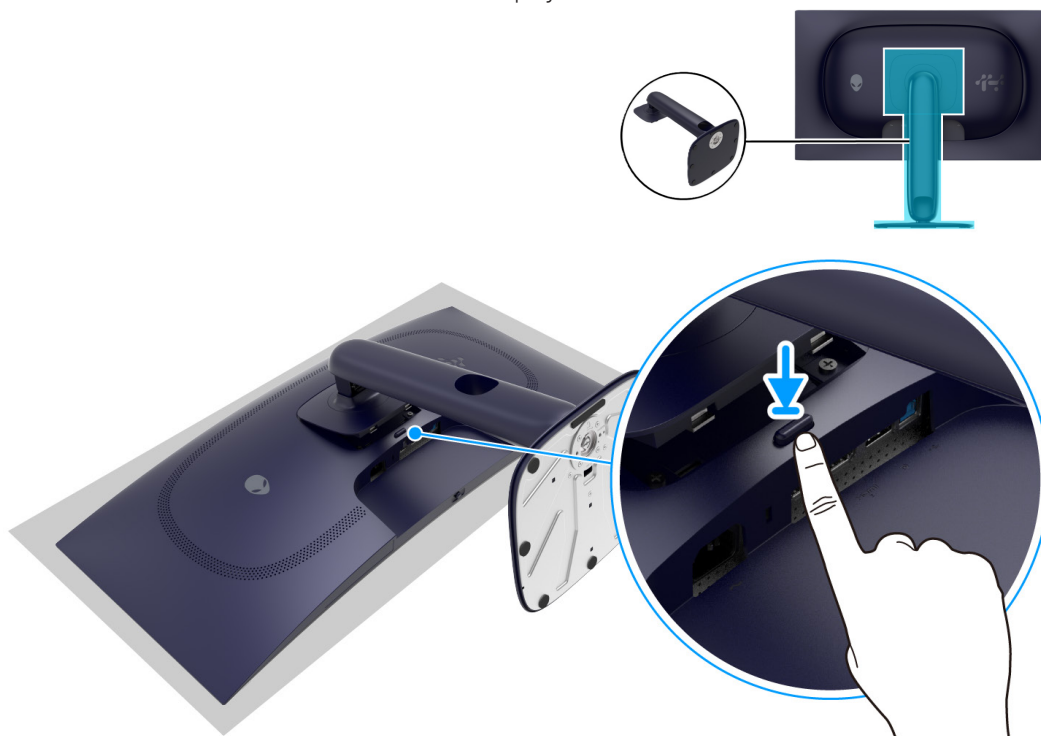


Figure 1. Removing the stand

3. Lift the stand assembly up and away from the monitor.



Figure 2. Removing the stand

Installing the stand

Steps

1. Align the tabs on the stand with the grooves at the back of the monitor.
2. Slide and gently press the stand assembly until it snaps into place.

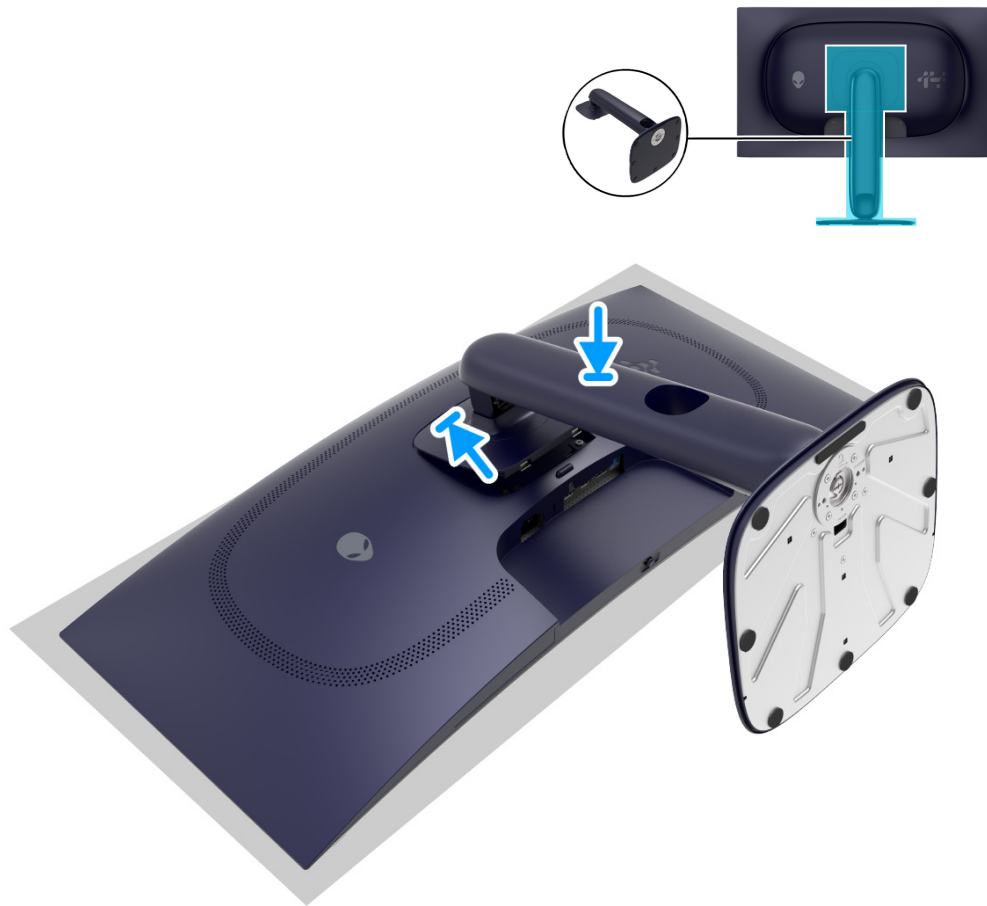


Figure 3. Installing the stand

Next steps

1. Follow the procedure in [After working inside your monitor.](#)

Back Cover

Removing the back cover

Prerequisites

1. Follow the procedure in [Before working inside your monitor.](#)
2. Remove the [stand.](#)

Steps

1. Remove the four screws (M4x10) that secure the back cover to the display assembly.



4x
M4x10



Figure 4. Removing the back cover

- Using a plastic scribe, pry the back cover starting from the bottom edge of the monitor.



Figure 5. Removing the back cover

- Lift the back cover partially from the bottom edge.
- Disconnect the control-board cable from the connector on the interface board.
- Disconnect the LED-board cable from the connector on the interface board.
- Remove the back cover from the display assembly.

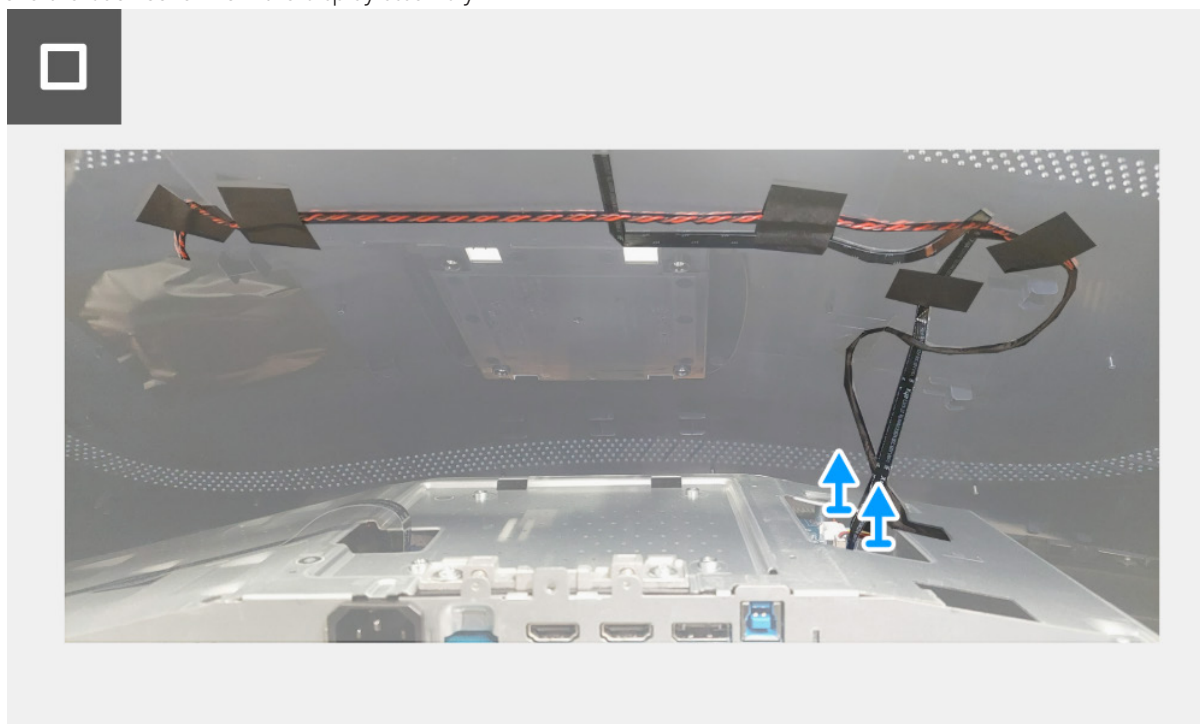


Figure 6. Removing the back cover

Installing the back cover

Steps

1. Connect the LED-board cable to the connector on the interface board.
2. Connect the control-board cable to the connector on the interface board.

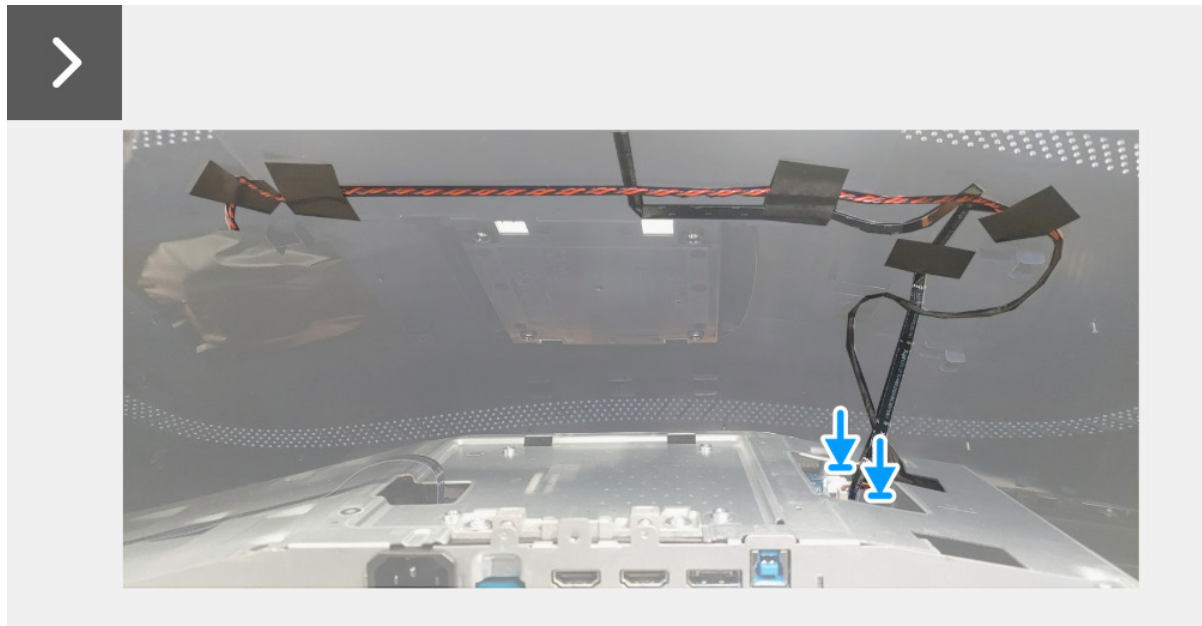


Figure 7. Installing the back cover

3. Align the screw holes on the back cover with the screw holes on the monitor, and gently press along the sides to snap the back cover into place.



Figure 8. Installing the back cover

4. Replace the four screws (M4x10) to secure the back cover to the display assembly.



4x
M4x10



Figure 9. Installing the back cover

Next steps

1. Install the [stand](#).
2. Follow the procedure in [After working inside your monitor](#).

Metal shield

Removing the metal shield

Prerequisites

1. Follow the procedure in [Before working inside your monitor.](#)
2. Remove the [stand.](#)
3. Remove the [back cover.](#)

Steps

1. Disconnect the lens-board cable from the connector on the interface board.
2. Disconnect the USB-board cable from the connector on the USB board.

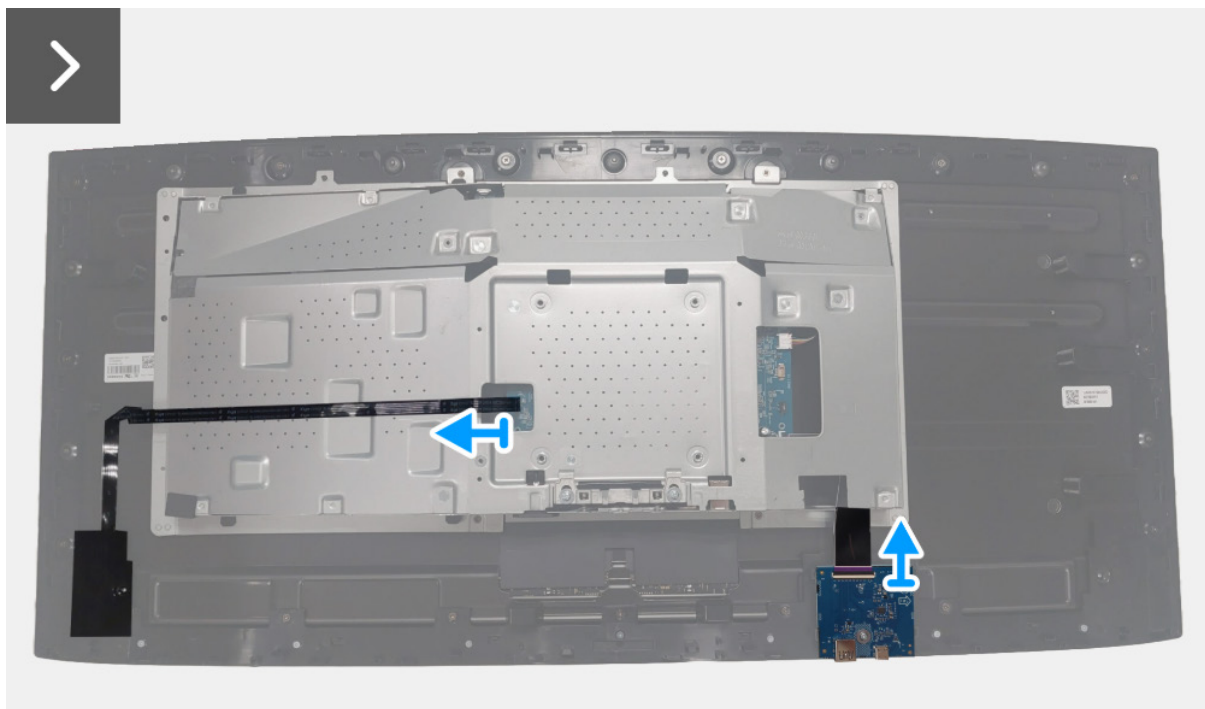
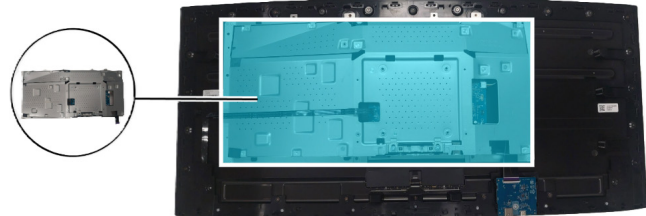


Figure 10. Removing the metal shield

3. Remove the four screws (M3x3) that secure the metal shield to the middle frame.



4x
M3x3

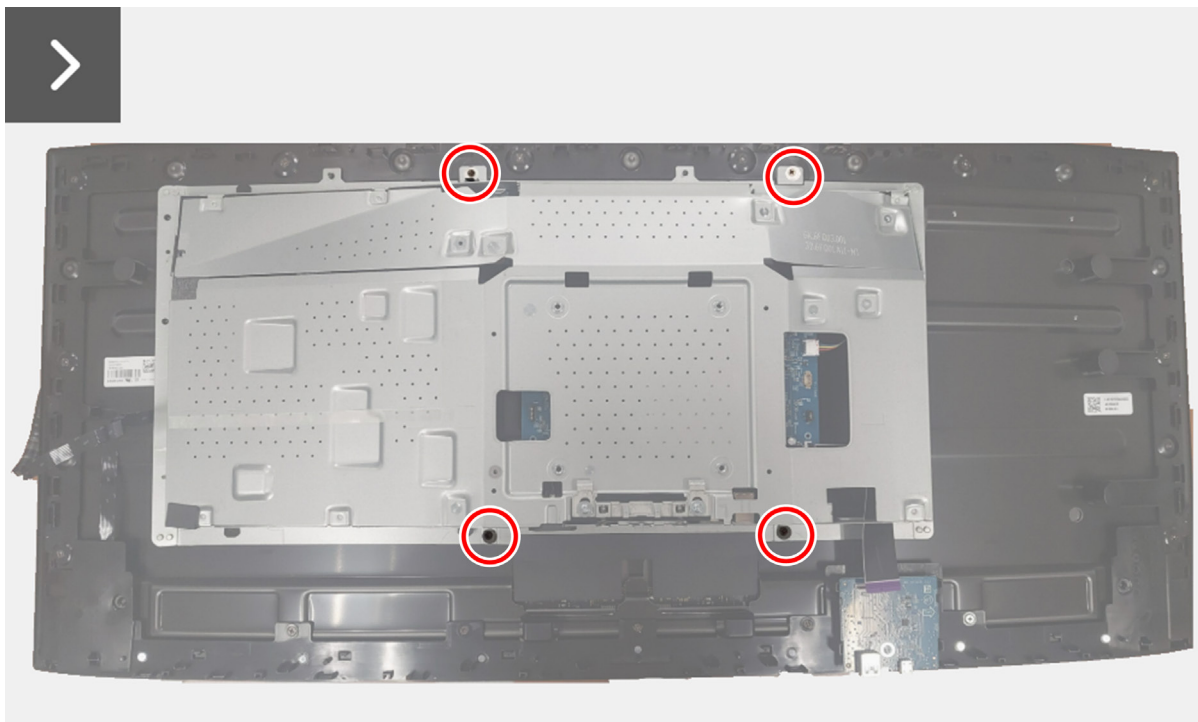


Figure 11. Removing the metal shield

4. Partially lift the metal shield and disconnect the DC-DC board cable from the connector on the display panel.
5. Disconnect the two LVDS cables from the connectors on the display panel.



Figure 12. Removing the metal shield

6. Remove the metal shield from the display panel.

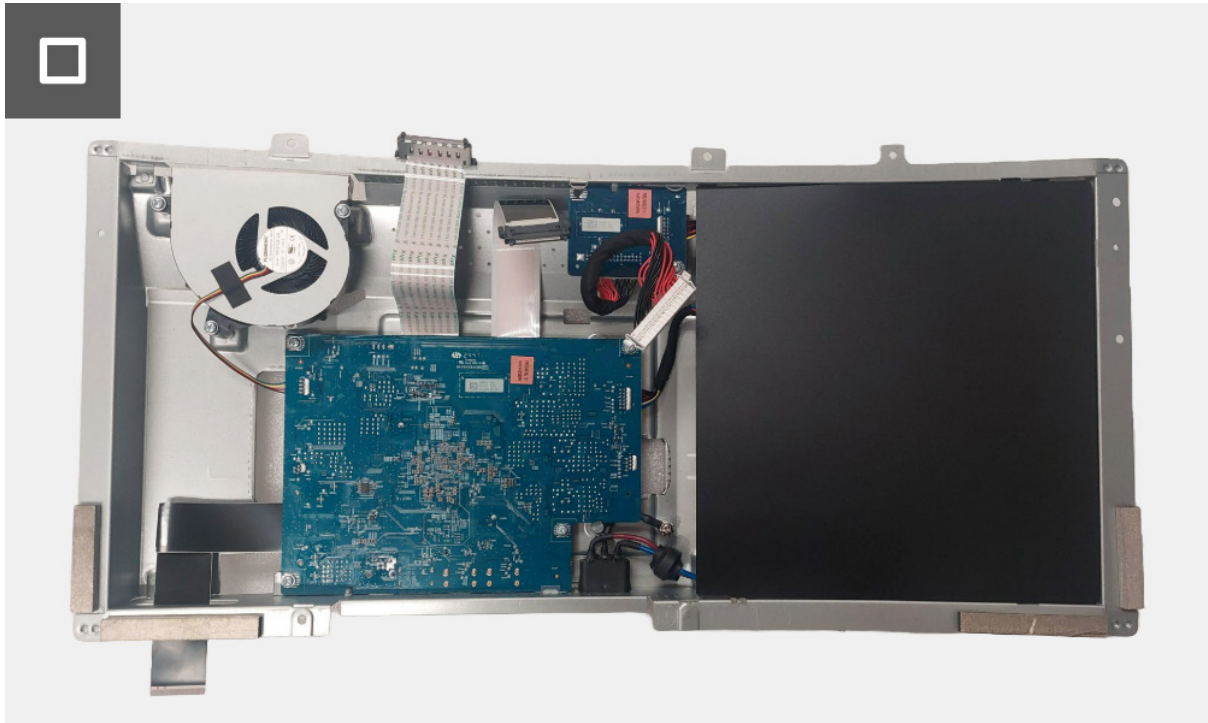


Figure 13. Removing the metal shield

Installing the metal shield

Steps

1. Connect the two LVDS cables to the connectors on the display panel.
2. Connect the DC-DC board cable to the connector on the display panel.

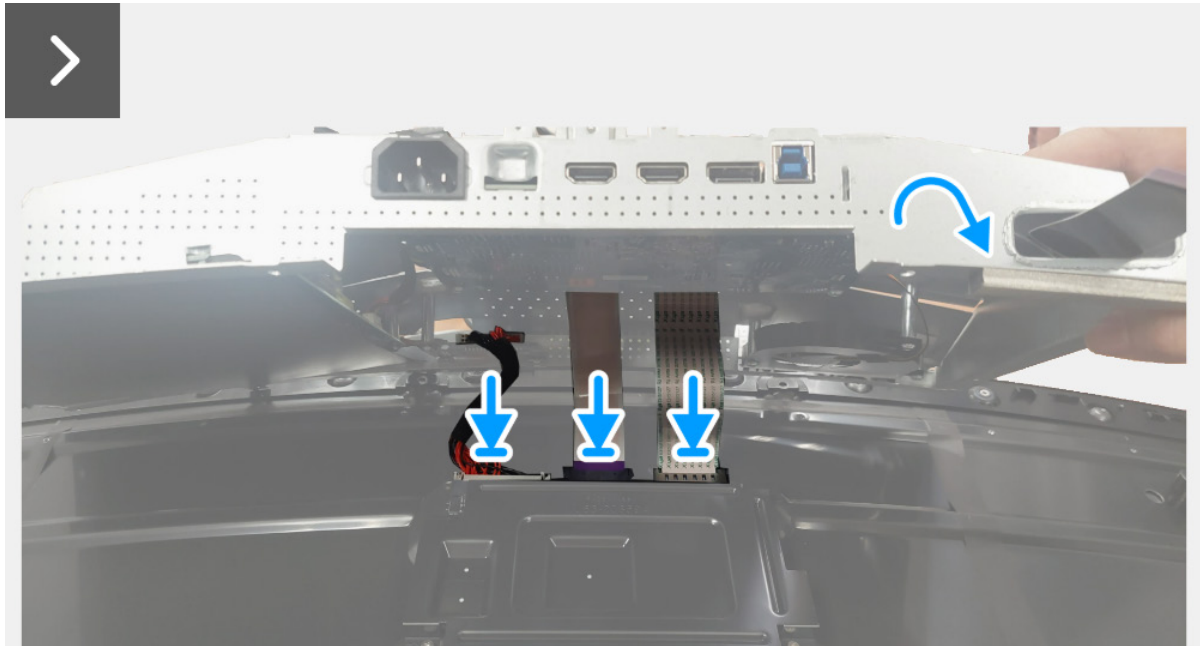
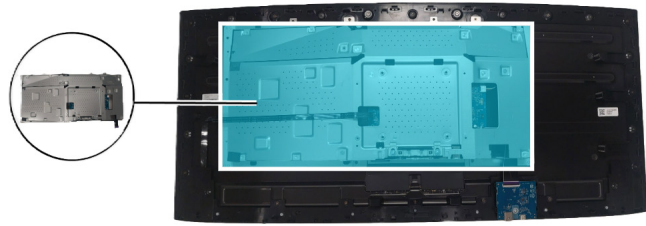


Figure 14. Installing the metal shield

3. Align and place the metal shield on the display panel.
4. Replace the four screws (M3x3) to secure the metal shield to the middle frame.



4x
M3x3

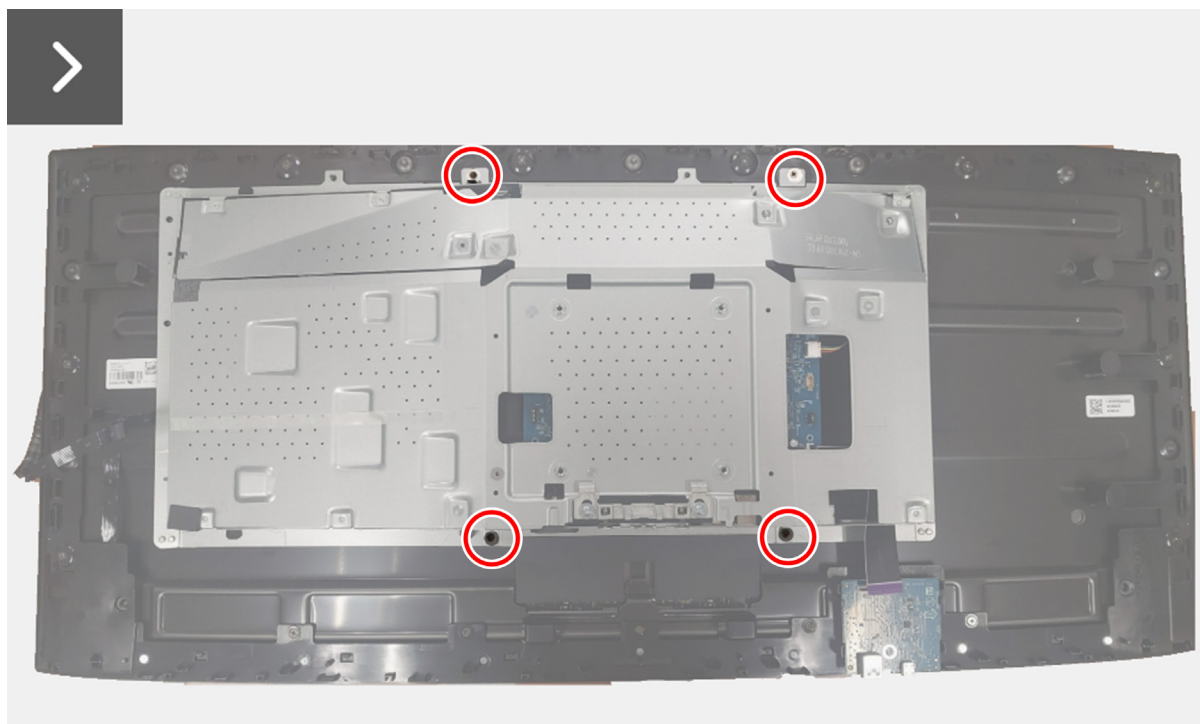


Figure 15. Installing the metal shield

5. Connect the USB-board cable to the connector on the USB board.
6. Connect the lens-board cable to the connector on the interface board.

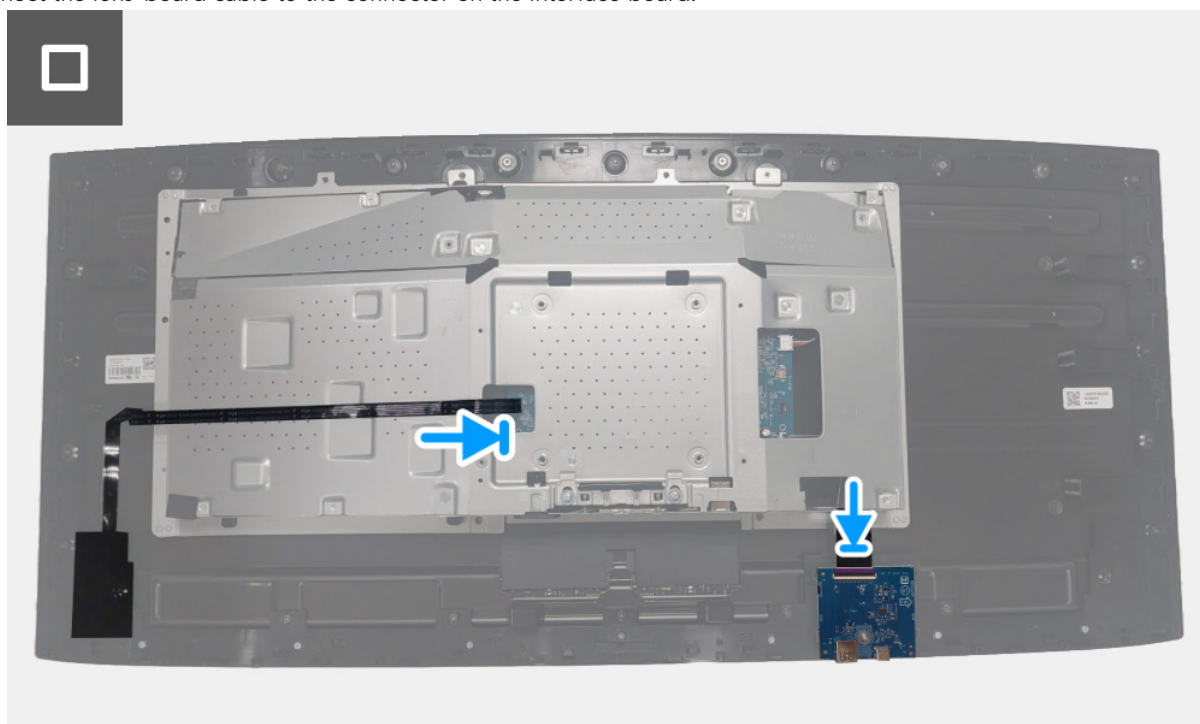


Figure 16. Installing the metal shield

Next steps

1. Install the [back cover](#).
2. Install the [stand](#).
3. Follow the procedure in [After working inside your monitor](#).

Interface board

Removing the interface board

Prerequisites

1. Follow the procedure in [Before working inside your monitor.](#)
2. Remove the [stand](#).
3. Remove the [back cover](#).
4. Remove the [metal shield](#).

Steps

1. Lift the Mylar sheet from the power board.

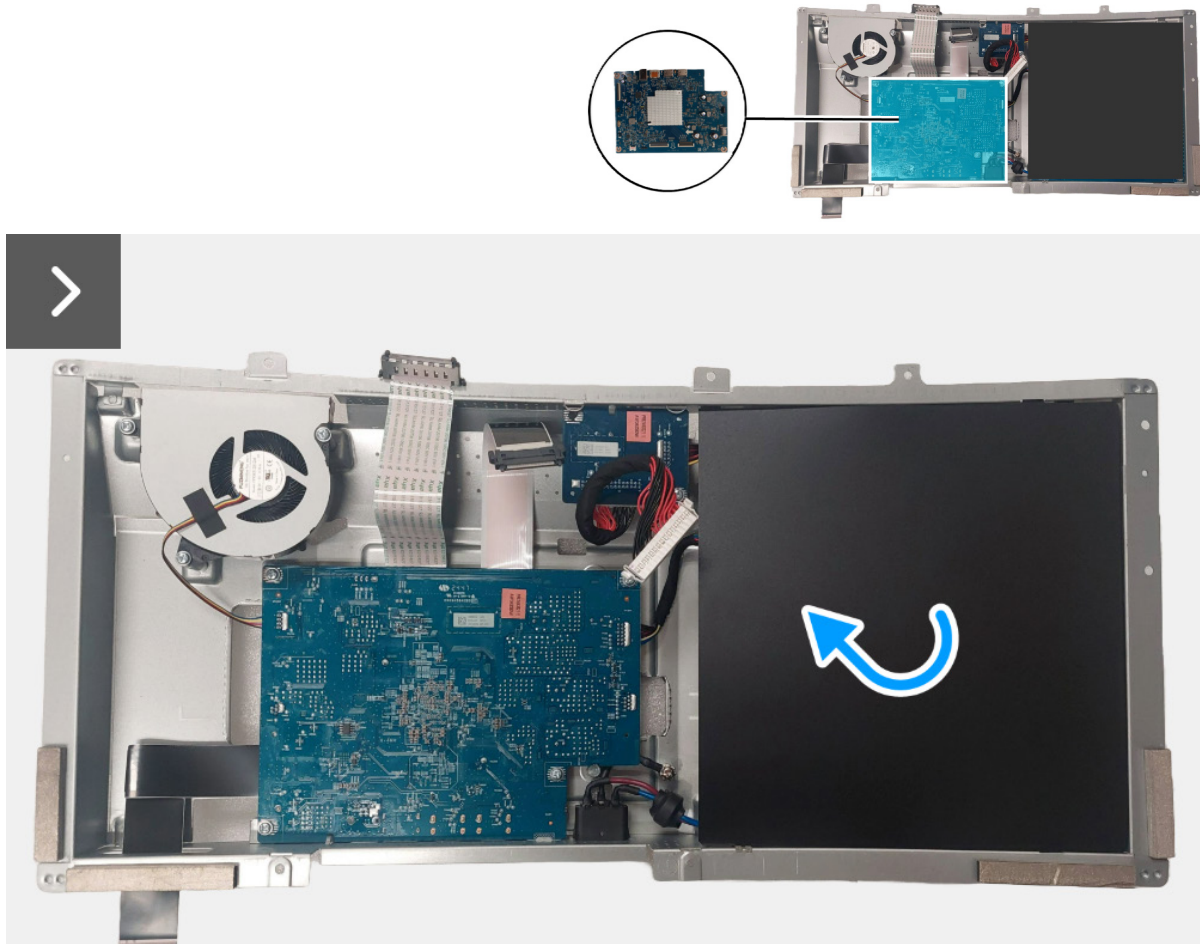


Figure 17. Removing the interface board

2. Remove the seven screws (M3x9) that secures the fan and interface board to the metal shield.



7x
M3x9

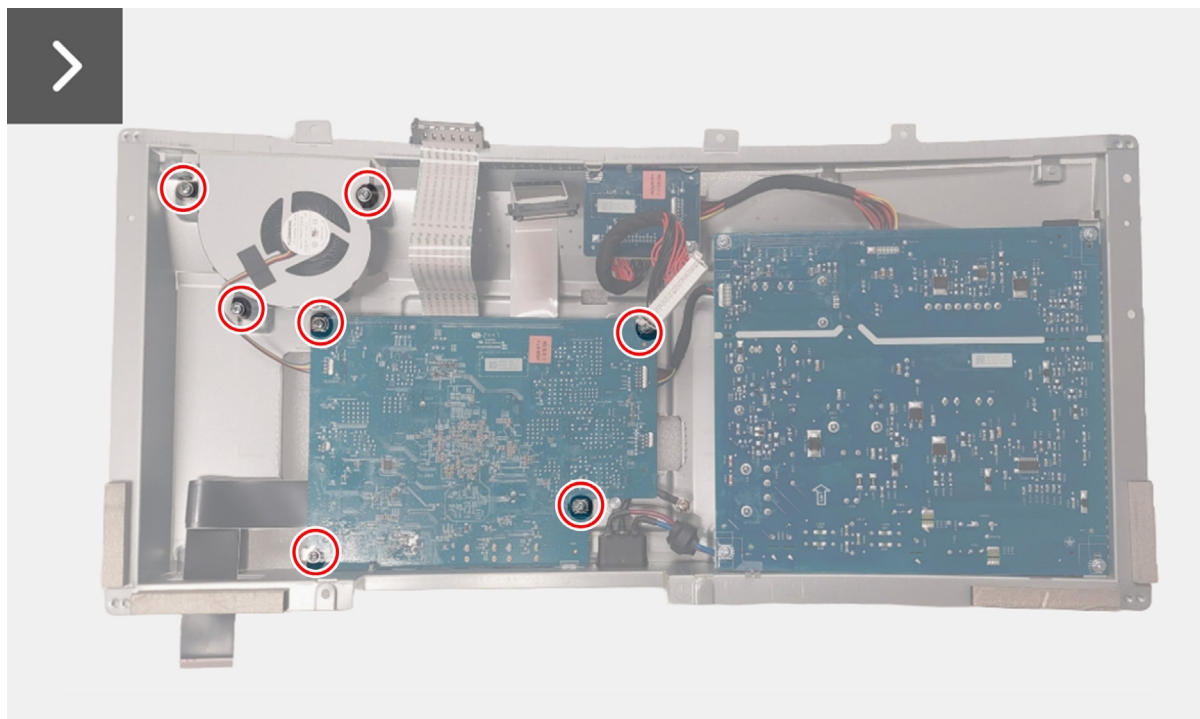


Figure 18. Removing the interface board

3. Lift and turn the fan away from the metal shield.
4. Lift and turn the interface board away from the metal shield.
5. Disconnect the power cable from the connector on the interface board.
6. Disconnect the fan cable from the connector on the interface board.
7. Open the latches and disconnect the LVDS cables from the connector on the interface board.
8. Open the latch and disconnect the USB board cable from the connector on the interface board.

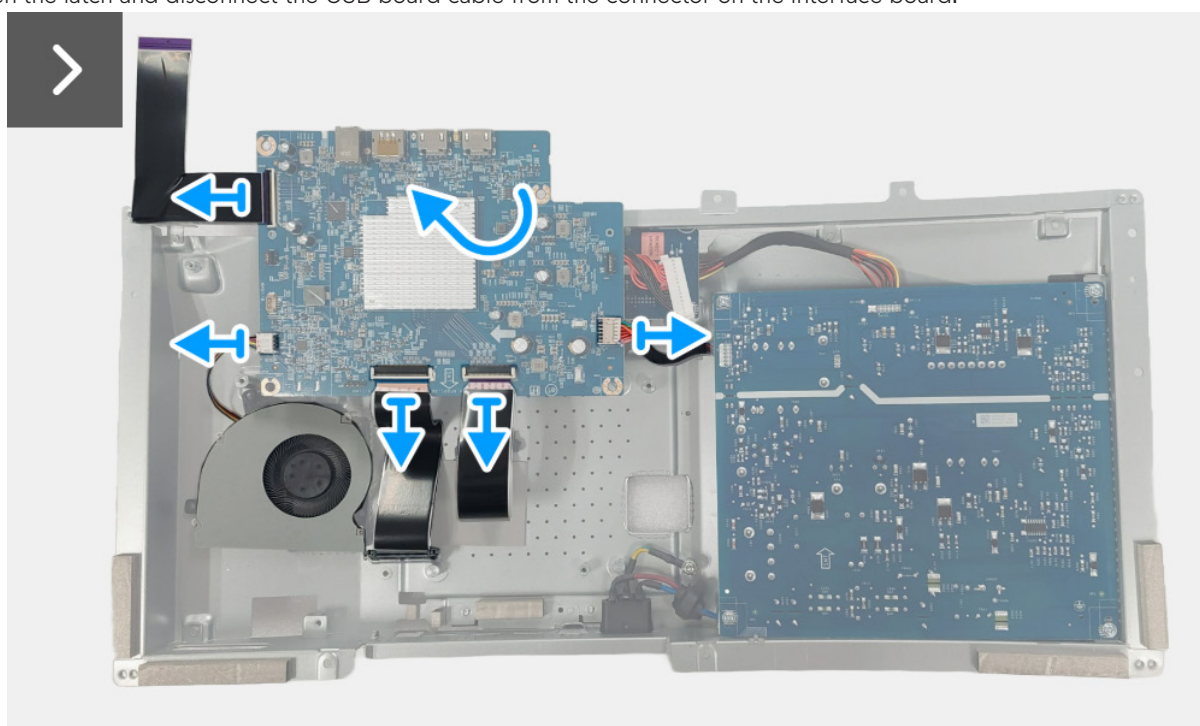


Figure 19. Removing the interface board

9. Remove the interface board from the metal shield.

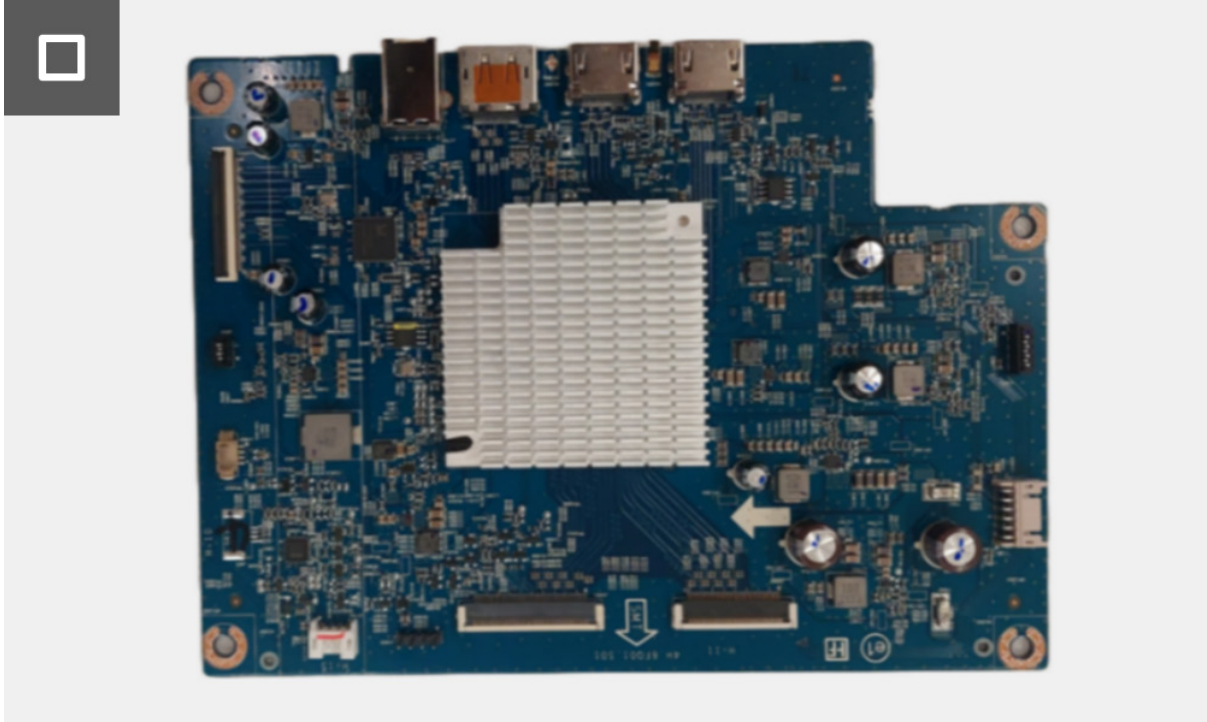


Figure 20. Removing the interface board

Installing the interface board

Steps

1. Slide the USB board cable into the connector on the interface board and close the latch to secure it in place.
2. Slide the LVDS cables into the connectors on the interface board and close the latches to secure them in place.
3. Connect the fan cable to the connector on the interface board.

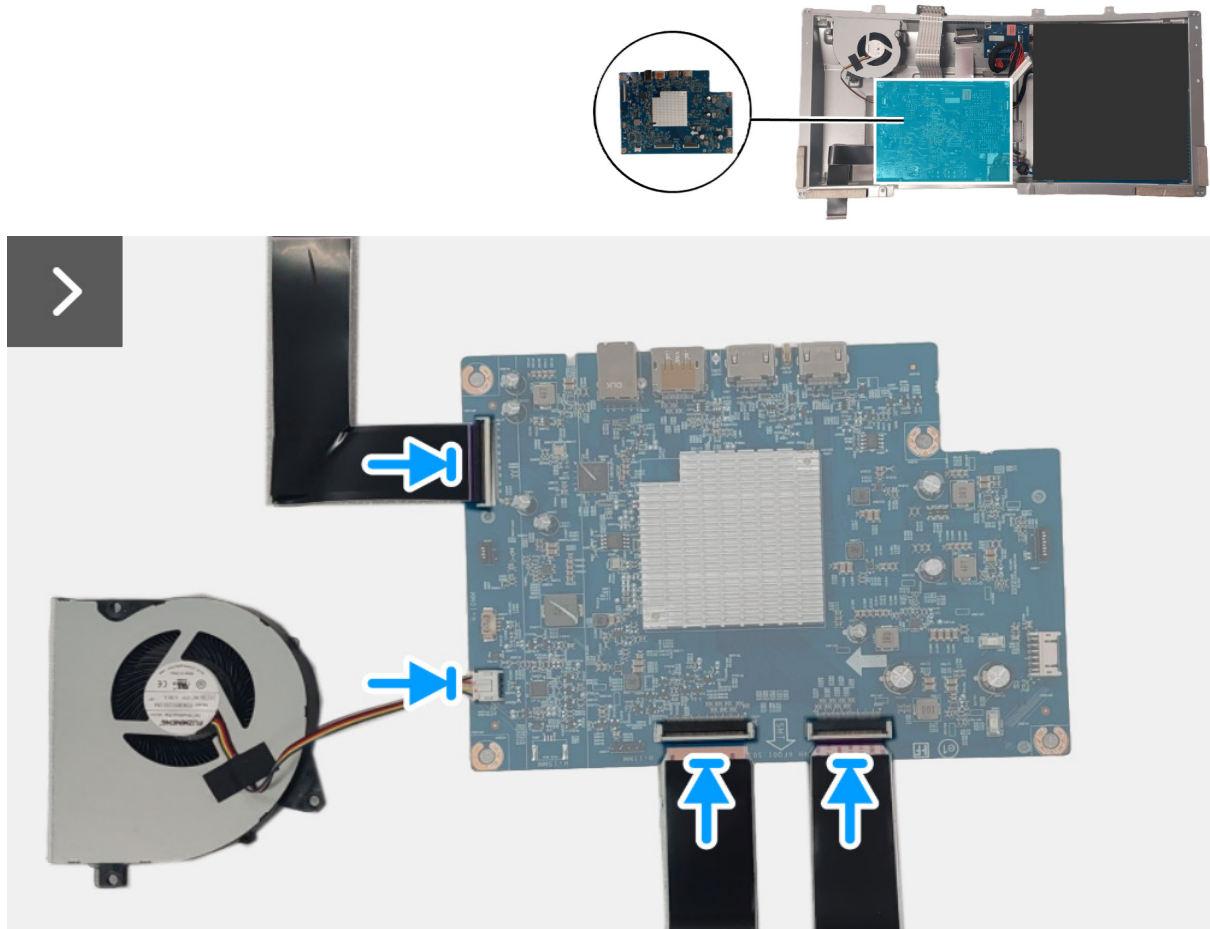


Figure 21. Installing the interface board

4. Connect the power cable to the connector on the interface board.

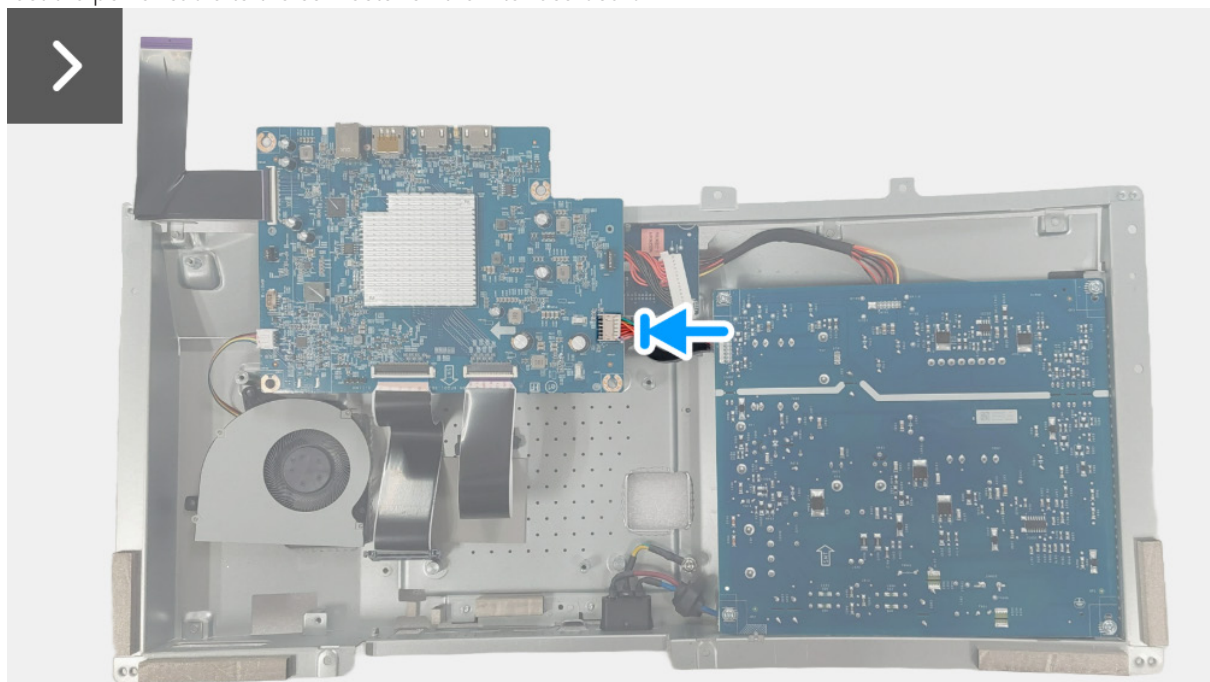


Figure 22. Installing the interface board

5. Place the interface board on the metal shield.
6. Align the screw holes on the interface board with the screw holes on the metal shield.
7. Replace the 4 screws (M3X9) that secure the interface board to the metal shield.
8. Place the fan on the metal shield.
9. Align the screw holes on the fan with the screw holes on the metal shield.
10. Replace the 3 screws (M3X9) that secure the fan to the metal shield.



7x
M3x9

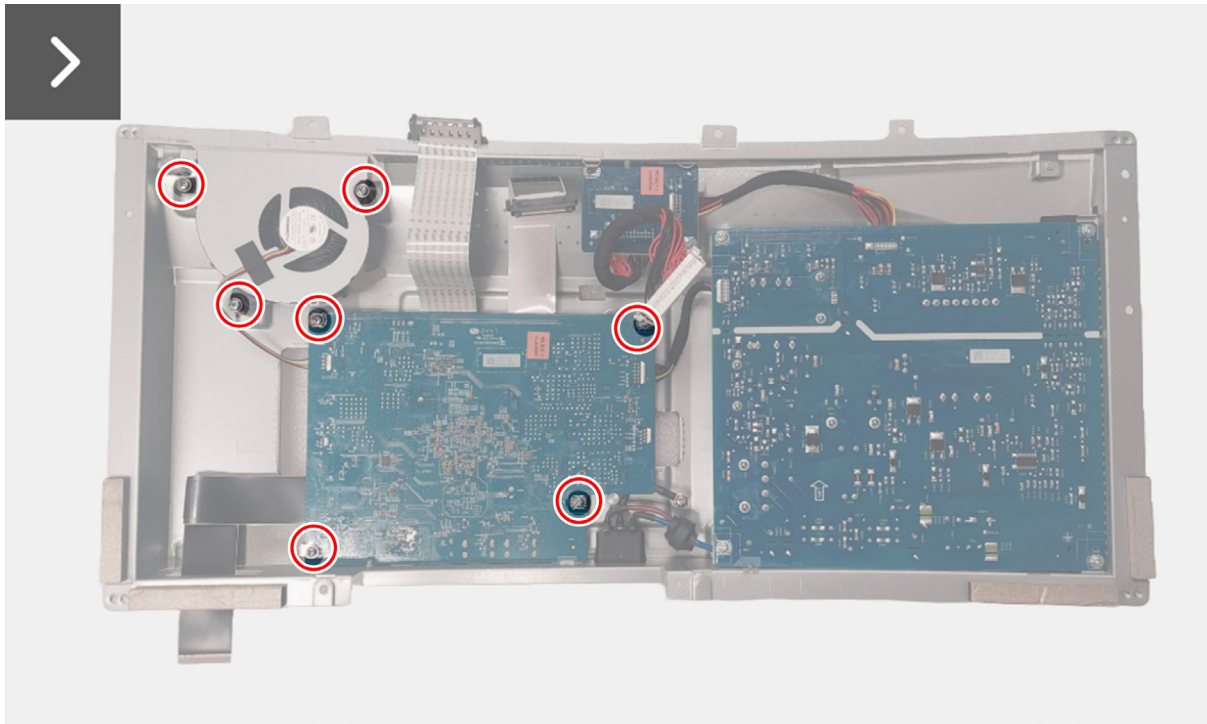


Figure 23. Installing the interface board

11. Align and place the Mylar sheet on the power board.

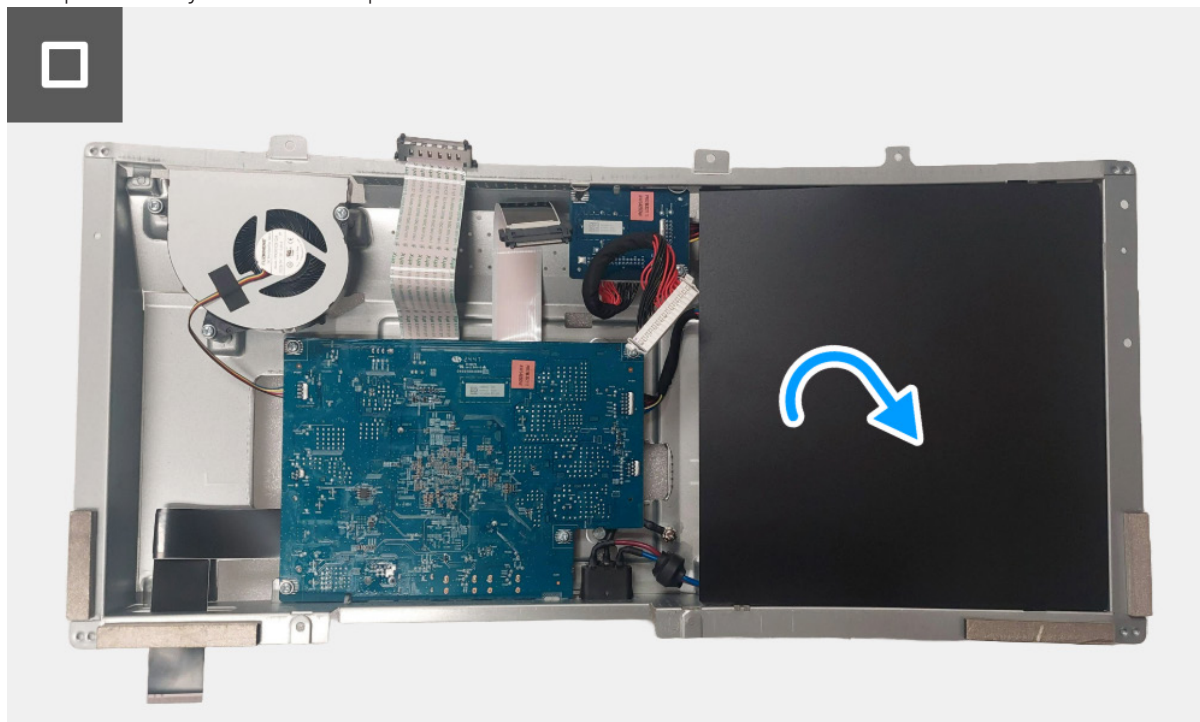


Figure 24. Installing the interface board

Next steps

1. Install the [metal shield](#).
2. Install the [back cover](#).
3. Install the [stand](#).
4. Follow the procedure in [After working inside your monitor](#).

DC-DC board

Removing the DC-DC board

Prerequisites

1. Follow the procedure in [Before working inside your monitor.](#)
2. Remove the [stand.](#)
3. Remove the [back cover.](#)
4. Remove the [metal shield.](#)
5. Remove the [interface board.](#)

Steps

1. Remove the screw (M3x9) that secures the DC-DC board to the metal shield.
2. Lift and turn the DC-DC board away from the metal shield.
3. Disconnect the power cable from the connector on the DC-DC board.



1x
M3x9

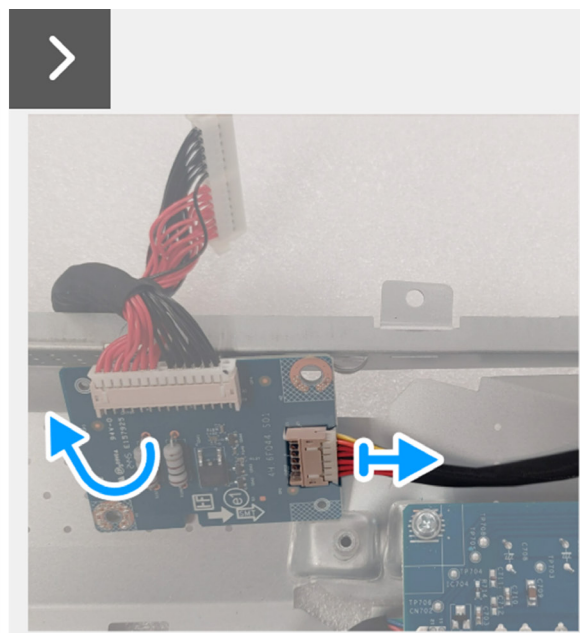
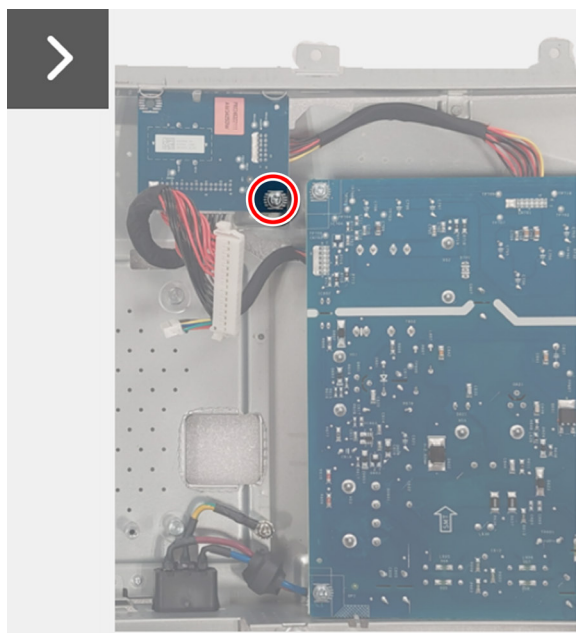
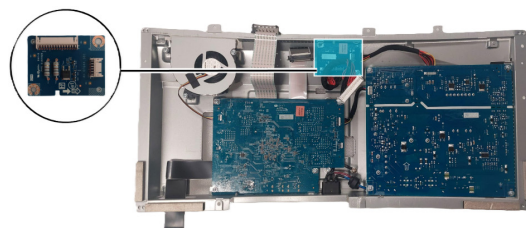


Figure 25. Removing the DC-DC board

4. Remove the DC-DC board from the metal shield.
5. Disconnect the DC-DC board cable from the connector on the DC-DC board.

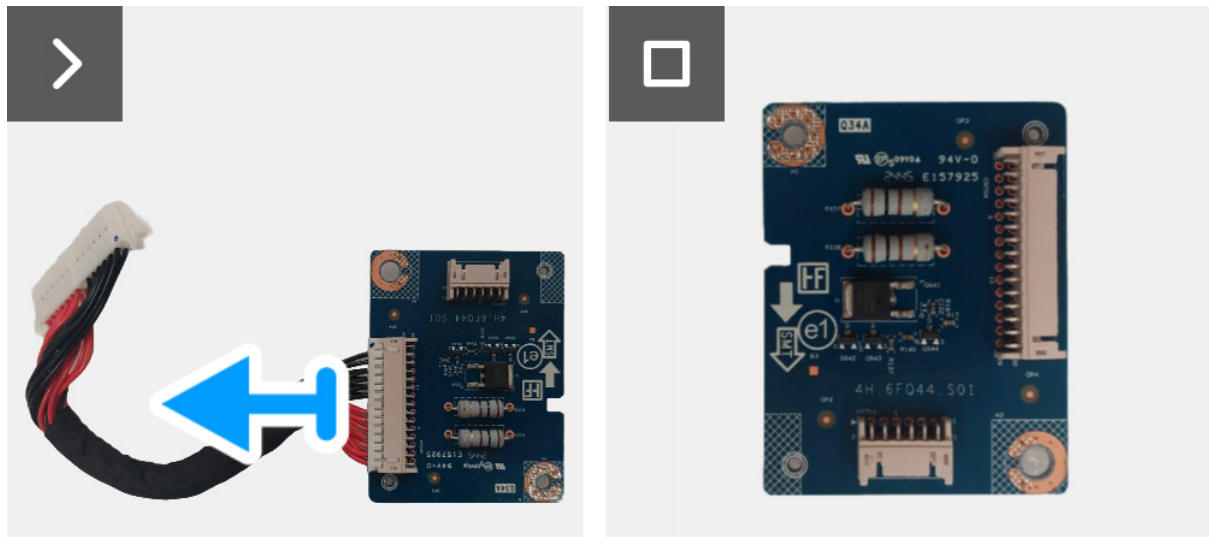


Figure 26. Removing the DC-DC board

Installing the DC-DC board

Steps

1. Connect the DC-DC board cable to the connector on the DC-DC board.
2. Connect the power cable to the connector on the DC-DC board.

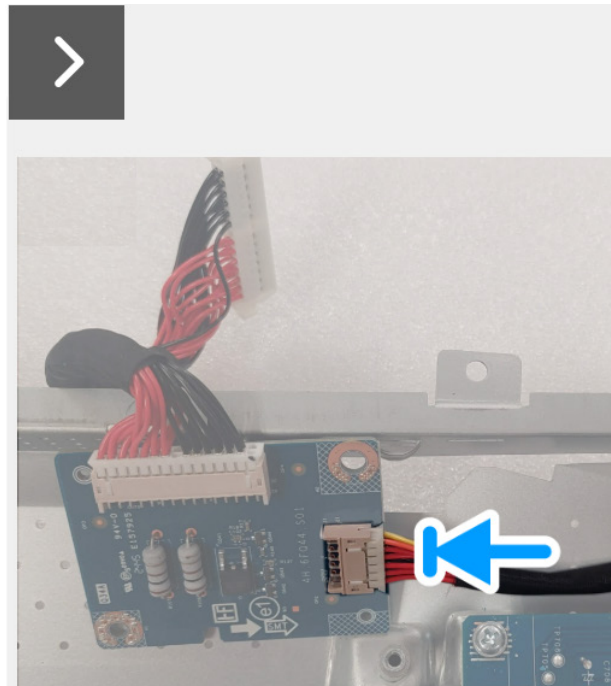
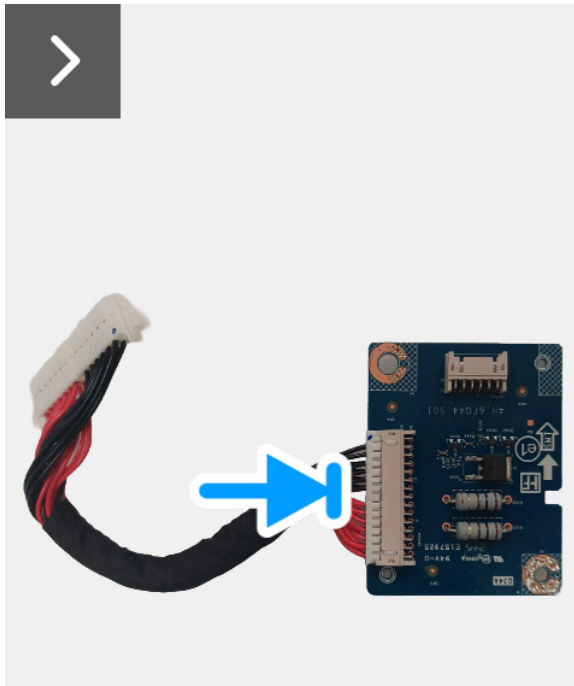
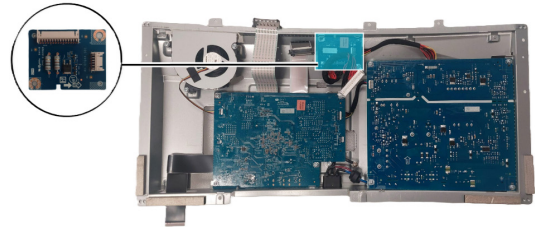


Figure 27. Installing the DC-DC board

3. Align and place the DC-DC board in the slot inside the metal shield.
4. Replace the screw (M3x9) to secure the DC-DC board to the metal shield



1x
M3x9

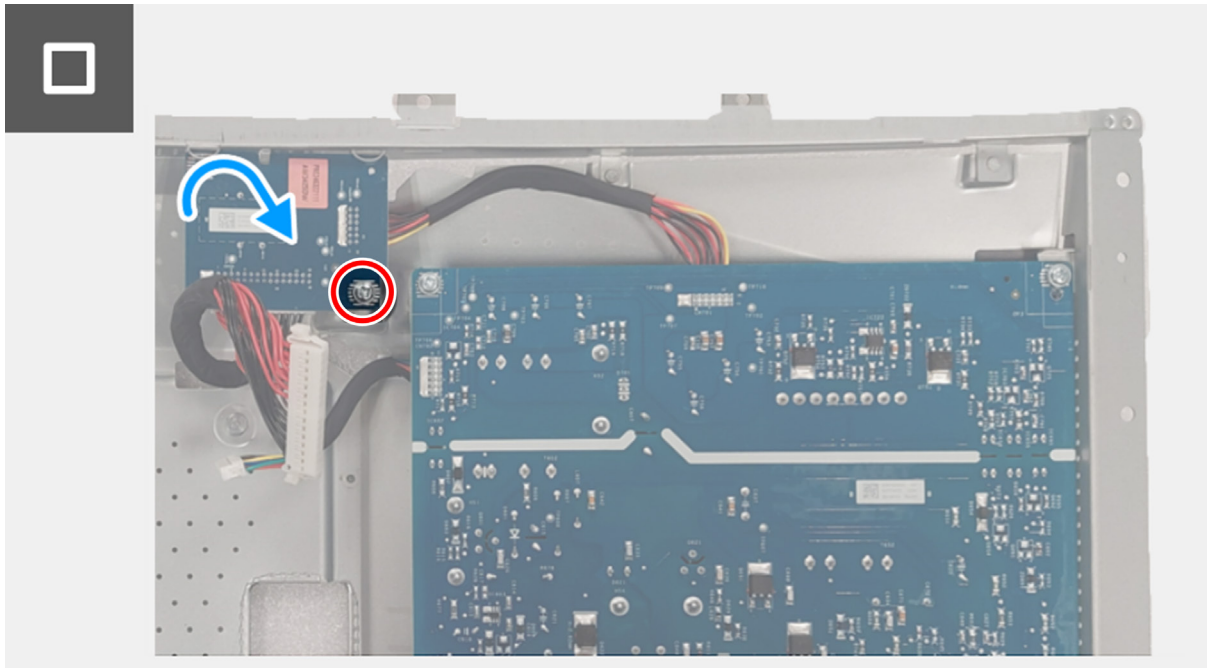


Figure 28. Installing the DC-DC board

Next steps

1. Install the [interface board](#).
2. Install the [metal shield](#).
3. Install the [back cover](#).
4. Install the [stand](#).
5. Follow the procedure in [After working inside your monitor](#)

Power board

Removing the power board

Prerequisites

1. Follow the procedure in [Before working inside your monitor.](#)
2. Remove the [stand.](#)
3. Remove the [back cover.](#)
4. Remove the [metal shield.](#)
5. Remove the [interface board.](#)
6. Remove the [DC-DC board.](#)

Steps

1. Remove the four screws (M3x9) that secure the power board to the metal shield.

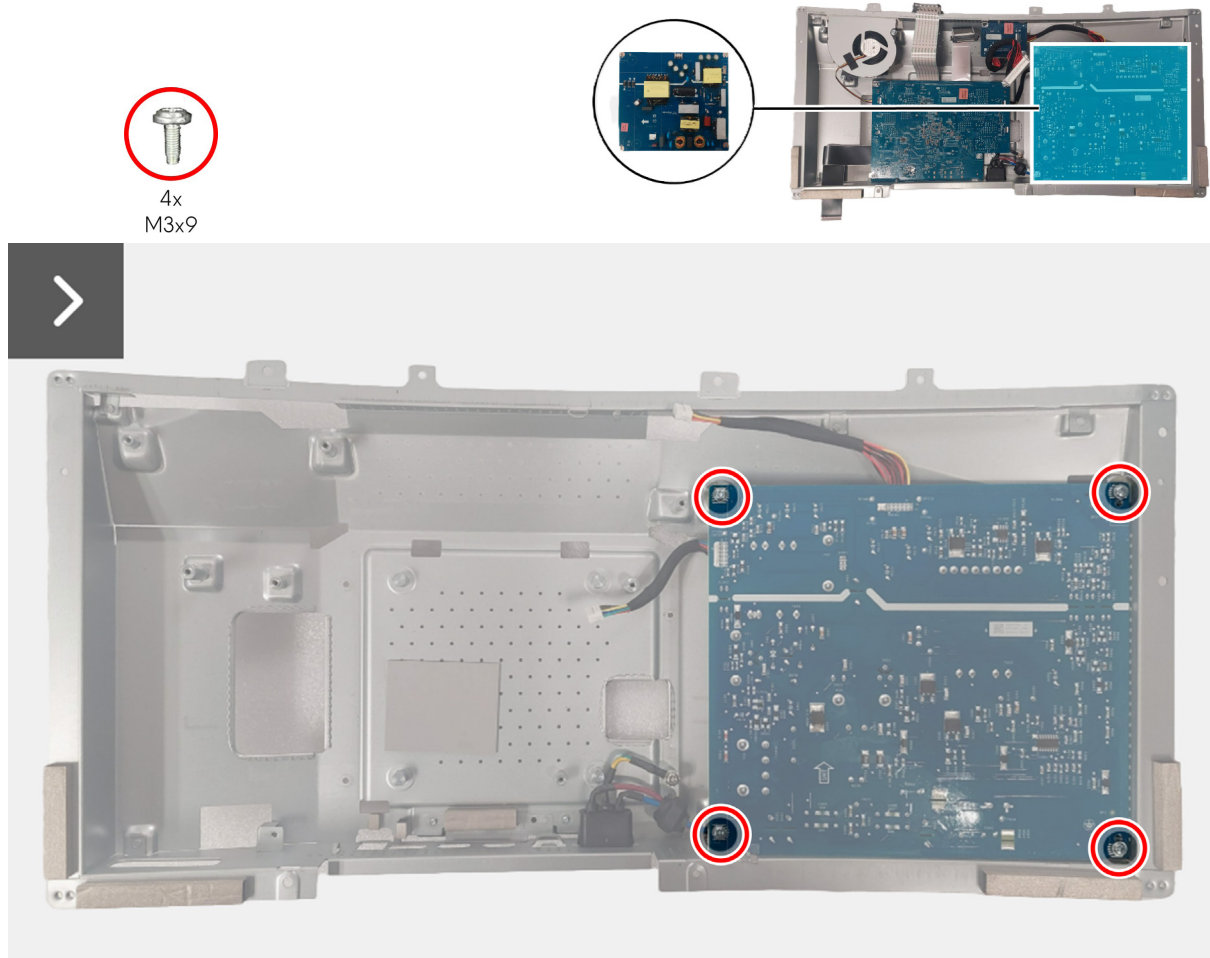


Figure 29. Removing the power board

2. Partially lift the power board from the metal shield.
3. Disconnect the AC-socket cable from the connector on the power board.

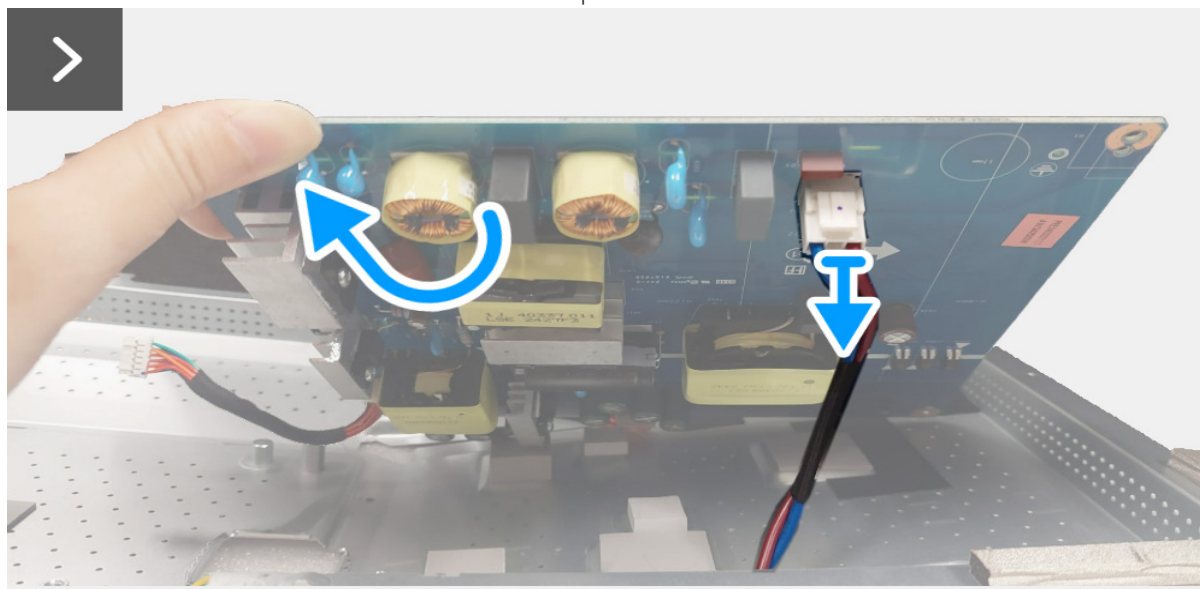


Figure 30. Removing the power board

4. Remove the power board from the metal shield.
5. Disconnect the power cables from the connectors on the power board.

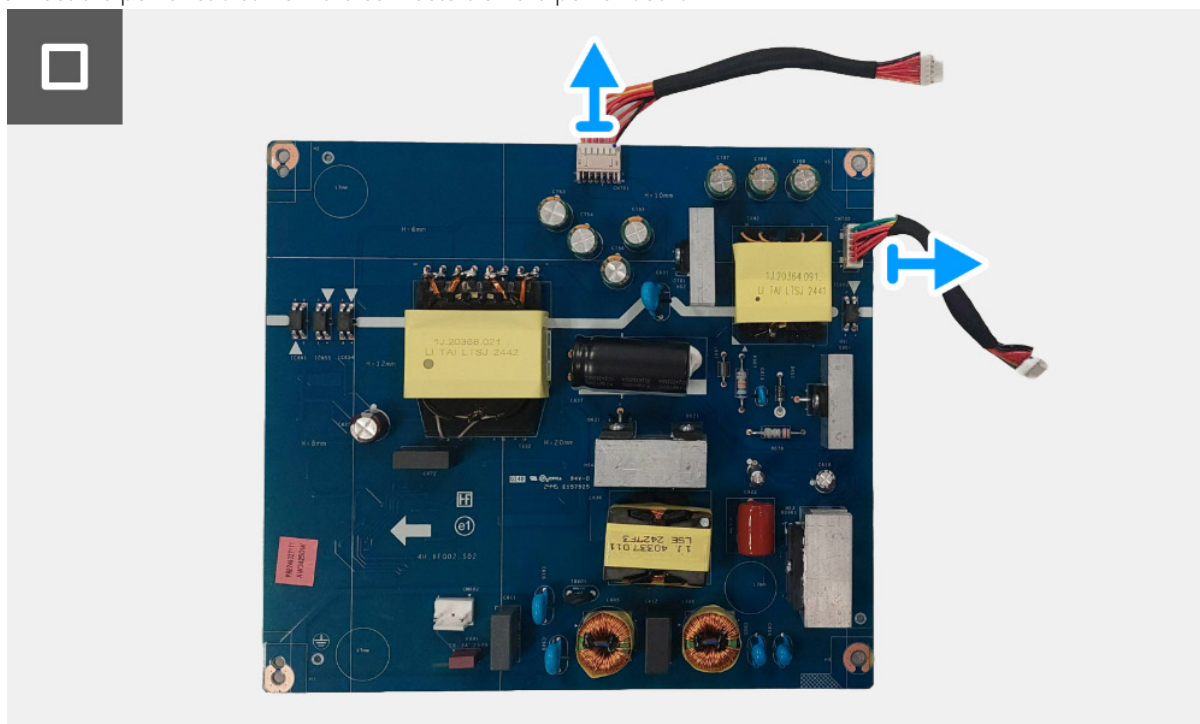


Figure 31. Removing the power board

Installing the power board

Steps

1. Connect the power cables to the connectors on the power board.

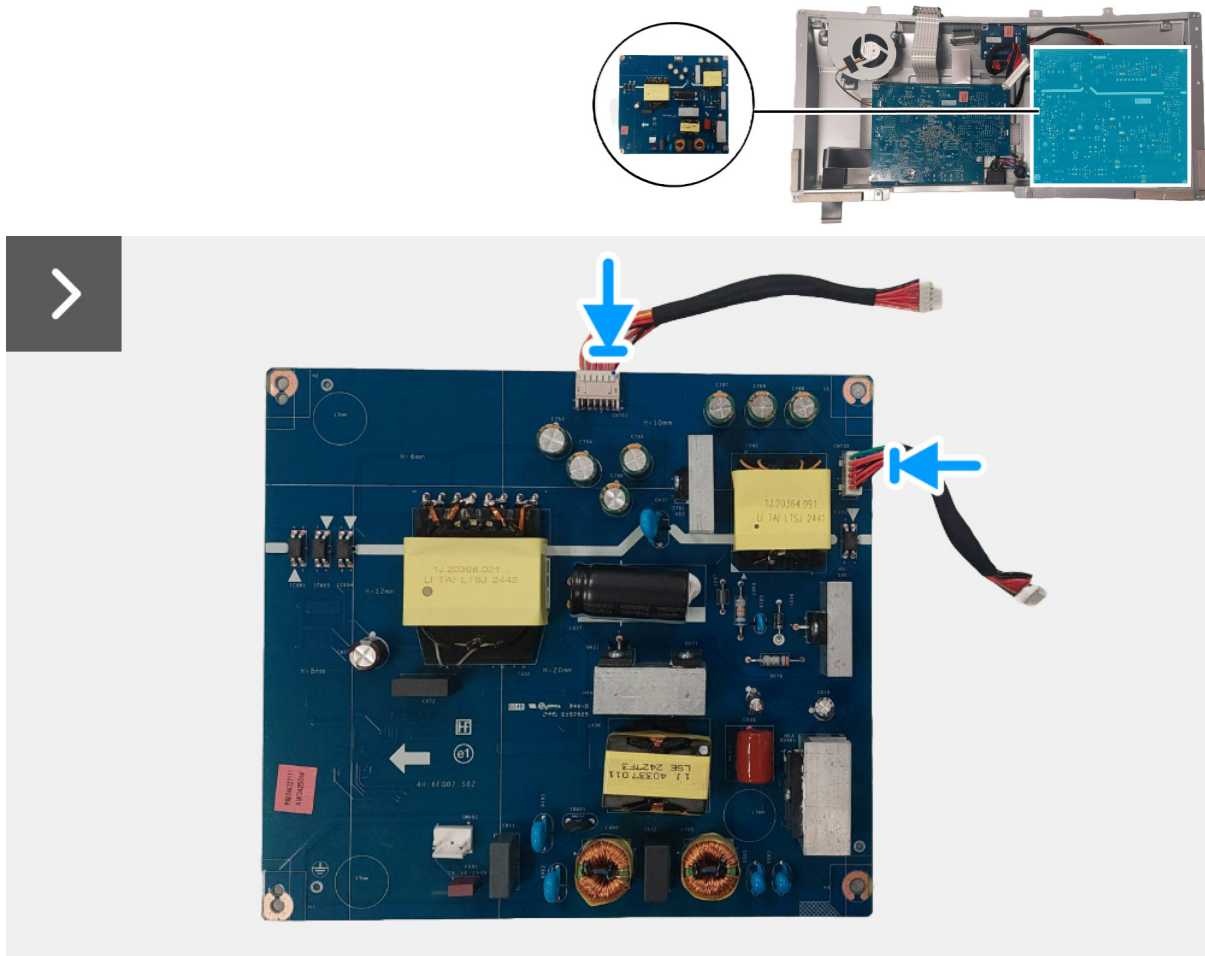


Figure 32. Installing the power board

2. Turn the power board with the connectors facing down and connect the AC-socket cable to the connector on the power board.



Figure 33. Installing the power board

3. Align and place the power board in the slot inside the metal shield.
4. Replace the four screws (M3x9) to secure the power board to the metal shield.



4x
M3x9

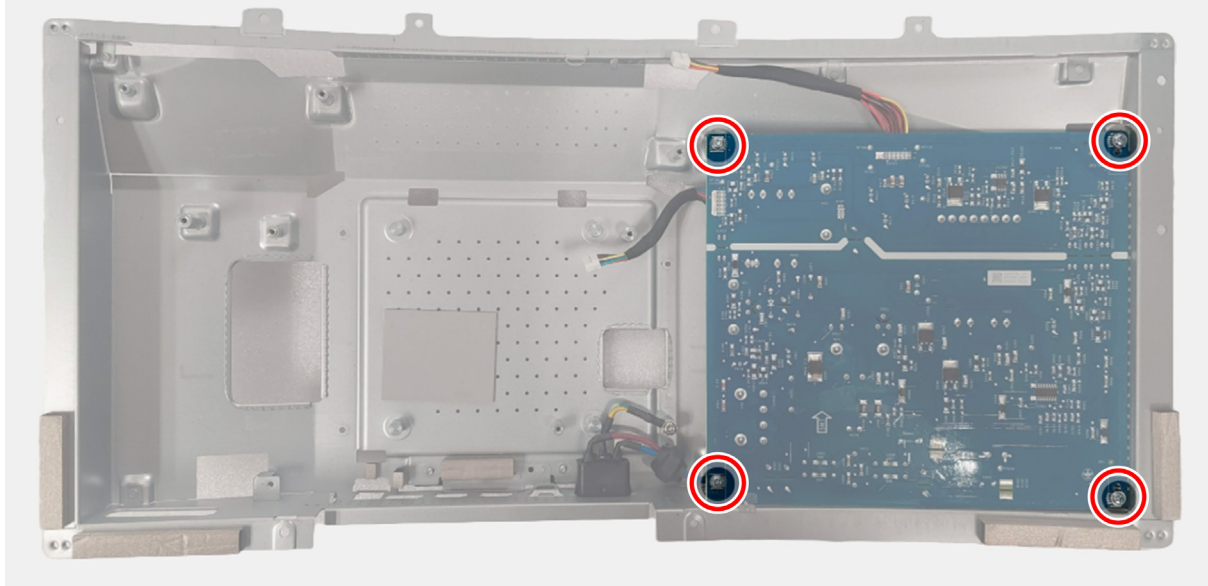


Figure 34. Installing the power board

Next steps

1. Install the [DC-DC board](#).
2. Install the [interface board](#).
3. Install the [metal shield](#).
4. Install the [back cover](#).
5. Install the [stand](#).
6. Follow the procedure in [After working inside your monitor](#).

Regulatory information

FCC notices (U.S. only) and other regulatory information

For FCC notices and other regulatory information, see the regulatory compliance website located at [Dell Regulatory Compliance Home Page](#).

EU product database for energy label and product information sheet

AW3425DW: <https://eprel.ec.europa.eu/qr/2220414>

Contacting Dell

To contact Dell for sales, technical support, or customer service issues, see www.dell.com/contactdell.

- ① **NOTE:** Availability varies by country, region, or product, and some services may not be available in your country.
- ① **NOTE:** If you do not have an active Internet connection, you can find contact information about your purchase invoice, packing slip, bill, or Dell product catalog.