



Easy Rack Power Distribution

- Easy Basic Rack PDU
- Easy Metered Rack PDU with NMC3
- Easy Switched Rack PDU with NMC3
- Easy Metered-by-Outlet Rack PDU with APC NMC3 Integration



se.com

Life Is On

Schneider
Electric



Make Power Distribution Easy

The APC Easy Rack PDU is an easy-to-install, easy-to-use rack mount PDU that helps manage power distribution to the equipment in the rack and provides monitoring and control functionalities.

Easy Basic Rack PDU

- More than a power strip, helps in reliable power distribution

Easy Metered Rack PDU with NMC3

- Real-time remote monitoring of connected loads
- User-defined alarms warn IT and data center managers of potential circuit overloads to prevent accidental power loss to critical equipment

Easy Switched Rack PDU with NMC3

- Metered functionality
- Switch on/off the connected power load remotely

Easy Metered by Outlet Rack PDU

- Enhanced security protocols and functions with APC NMC3 integration
- Network Port Sharing with CAN(Controller Area Network) protocol
- Communication I/O upto 3 T/H sensor & 1 serial port
- Individual outlet level power metering
- User resettable energy (kWh) logs for capacity planning and energy efficiency initiatives

EPDU1xxxMBO ---> EPDU2xxxMBO
EPDU1xxxSMBO ---> EPDU2xxxSMBO
EPDU1xxxM ----> EPDU2xxxM
EPDU1xxxS ---> EPDU2xxxS

Easy for installation

- Ultra-lightweight, thanks to aluminum housing
- Support both toolless mounting and bracket mounting
- Built-in input cord with Industrial connector for vertical PDU
- Low-profile in-depth, more convenience for equipment installation

Easy for operation and maintenance

- User-friendly & simple web interface and LCD screen
- Support network port, easy for data communication
- Field-replaceable control module, easy for maintenance

Typical applications

- Small and medium data centers and computer rooms
- Colocation and large enterprise data centres
- Manufacturing facilities
- Telecommunication
- Commercial buildings
- Healthcare
- Transportation

Product feature by series

	Basic	Metered	Switched	Metered-by-Outlet	Metered-by-Outlet with switching
	EPDU1xxxB	EPDU2xxxM	EPDU2xxxS	EPDU2xxxMBO	EPDU2xxxSMBO
Design feature					
Ultralow-profile, space-saving design	√	√	√	√	√
Hydraulic-magnetic circuit breakers (in units with 32A input current)	√	√	√	√	√
Environmental monitoring port for external temperature/humidity monitoring		√	√	√	√
Availability for regional outlets socket type	√				
Display and network management					
Full-featured network management capability via Web and SNMP		√	√	√	√
User-interactive LCD display for local access		√	√	√	√
Network port sharing		16	16	16	16
Enhanced security with APC NMC3 integration and Ecostruxure IT ready		√	√	√	√
Metering capability					
Metering Accuracy		±1%	±1%	±1%	±1%
Active current measurements (amps)		√	√	√	√
Active power measurements (including volts, amps, real power (kW) and energy (kWh))		√	√	√	√
User-customizable alarms and warnings		√	√	√	√
Embedded log memory to record/review/report		√	√	√	√
Individual outlet power metering				√	√
Use access control with two levels		√	√	√	√
Outlet control					
Individual outlet remote power on/off control			√		√
Power-on sequencing and time delays with full user customization			√		√
Outlet level grouping (multiple outlets in same or multiple units follow single command)			√		√
Use access control with two levels		√	√	√	√
Environmental					
Maximum operating temperature	45°C	50°C	50°C	50°C	50°C
Maintenance					
Warranty	1 year	2 year	2 year	2 year	2 year



Easy Basic Rack PDU

APC Easy Basic Rack PDU provides rack power distribution via a single input with multiple output receptacles and distributes power from low amperage single-phase circuits to higher-power 3-phase solutions.



		EPDU1010B-SCH	EPDU1016B	EPDU1116B	EPDU1116B-SCH	EPDU1132B	EPDU1132B-SCH	EPDU1216B	EPDU1232B	
Electrical	Nominal Voltage	230VAC, 1 phase						400VAC, 3 phase		
	Input Circuit	10A	16A			32A			16A, 3phase	32A, 3phase
	Input frequency	50/60 Hz								
	Input Connector	IEC-320 C14 200-240V Inlet	IEC-320 C20 200-240V Inlet	IEC 309 16A 2P+E	SCHUKO TYPE 16A	IEC 309 32A 2P+E		IEC 309 16A 3P+N+E	IEC 309 32A 3P+N+E	
	Input Cord Length	2.5 m			3 m			2 m		
	Output Voltage	200-240VAC, 1PH								
	Output Receptacles	(1) C13 (6) SCHUKO	(8) C13	(20) C13 (4) C19	(14) SCHUKO , 45° orientation	(20) C13 (4) C19	(21) SCHUKO , 45° orientation	(36) C13 (6) C19	(30) C13 (12) C19	
	Circuit Breakers	NA				2 X 16A 1-pole hydraulic-magnetic circuit breakers		NA	6X 16A 1-pole hydraulic-magnetic circuit breakers	
Physical	Mount Style	Horizontal (19" rackmountable)			Vertical					
	Width	482mm	488mm	62mm						
	Height	44.4mm			902mm	1175mm	1506mm		1794mm	
	Depth	44.4mm								
	Housing material	Aluminum extrusion								
	Tool-less mounting	NA			Yes					
	Color	Black								
Environmental	Operating Temp	-5° to +45°C								
	Operating Humidity	5-95%RH, non-condensing								
	Elevation Operating/Storage	0—3 000 m / 0—15 000 m								
Regulatory	EMC	CE ,followed by standard EN55035, EN55032, EN55024								
	Safety	CE TÜV, followed by standard EN/IEC62368-1								
	Environment	RoHS, REACH								
Package	Rack Mounting Brackets	M6x16mm screw (4pcs), M6 cage nut (4pcs)			M5x10mm,self-tapplng screw (4pcs), L type Bracket 2pcs, included screw					
	Safety Sheet	included								
	Installations Instructions	included								
	Package Dimension	560*150*80mm			1320*160*110			1660*160*110		1950*160*110
	Weight/shipping weight	0.6KG/1.1KG	0.58KG/1.18KG	2.2KG/2.98KG	1.94KG/2.84KG	3.58KG/4.36KG	4.3KG/5.5KG	3.08KG/4.28KG	5.14KG/6.2KG	
Warranty	2 year									

Easy Metered Rack PDU with NMC3

APC Easy Metered Rack PDU provides real-time remote monitoring of connected loads. User-defined alarms warn of potential circuit overloads before critical IT failures occur.









		EPDU2016M <div>NEW</div>	EPDU2116M <div>NEW</div>	EPDU2132M <div>NEW</div>	EPDU2216M <div>NEW</div>	EPDU2232M <div>NEW</div>
Electrical	Nominal Voltage	230VAC, 1 phase			400VAC, 3 phase	
	Input Circuit	16A		32A	16A, 3phase	32A, 3phase
	Input frequency	50/60 Hz				
	Input Connector	IEC-320 C20 200-240V Inlet	IEC 309 16A 2P+E	IEC 309 32A 2P+E	IEC 309 16A 3P+N+E	IEC 309 32A 3P+N+E
	Input Cord Length	2.5 m	3 m		2 m	
	Output Voltage	200-240VAC, 1PH				
	Output Receptacles	(8)C13	(18) C13 (3) C19	(20) C13 (4) C19	(21) C13 (3) C19	(18) C13 (6) C19
	Circuit Breakers	NA		2 X 16A 1-pole hydraulic-magnetic circuit breakers	NA	6X 16A 1-pole hydraulic-magnetic circuit breakers
Physical	Mount Style	Horizontal (19" rackmountable)	Vertical			
	Width	482mm	62mm			
	Height	44.4mm	902mm	1175mm		1506mm
	Depth	44.4mm				
	Housing material	Aluminum extrusion				
	Tool-less mounting	NA	Yes			
	Color	Black				
User Interface	Local User Interface	LCD Display, language:English				
	Local User Control	2 Button for scroll/select/Reset			2 Buttons for scroll/select/Reset	
	Communication I/O	1 Network port , 1 Temperature/Humidity port				
	Remote Management Capabilities	http/https, SNMP V1,V2,V3				
Environmental	Operating Temp	-5° to +50°C				
	Operating Humidity	5-95%RH, non-condensing				
	Elevation Operating/Storage	0–3 000 m / 0–15 000 m				
Regulatory	EMC	CE , followed by standard EN55035, EN55032, EN55024				
	Safety	CE TÜV, followed by standard EN/IEC62368-1				
	Environment	RoHS, REACH				
Package	Rack Mounting Brackets	M6x16mm screw (4pcs), M6 cage nut (4pcs)	M5x10mm,self-tapping screw (4pcs), L type Bracket 2pcs, includedd screw			
	Safety Sheet	included				
	Installations Instructions	included				
	Package Dimension	560*150*80mm	1320*160*110			1660*160*110
	Weight/shipping weight	0.68KG/1.32KG	2.5KG/3KG	3.72KG/4.48KG	2.74KG/3.26KG	4.64KG/5.48KG
Accessory	EPDU-TH3 (need to be ordered separately)					
Warranty	1 year					

Easy Switched Rack PDU with NMC3

APC Easy Switched Rack PDU provides advanced load monitoring combined with remote on/off switching control of individual outlets for power cycling.



		EPDU2016S 	EPDU2116S 	EPDU2132S 	EPDU2216S 	EPDU2232S 	EPDU2232SX3620 		
Electrical	Nominal Voltage	230VAC, 1 phase			400VAC, 3 phase				
	Input Circuit	16A		32A		16A		32A	
	Input frequency	50/60 Hz							
	Input Connector	IEC-320 C20 200-240V Inlet	IEC 309 16A 2P+E	IEC 309 32A 2P+E	IEC 309 16A 3P+N+E	IEC 309 32A 3P+N+E			
	Input Cord Length	2.5m	3m			2m			
	Output Voltage	200-240VAC, 1PH							
	Output Receptacles	(8)C13	(20) C13 (4) C19			(21) C13 (6) C19		(18) C13 (6) C19 (30) C13 (6) C19	
	Circuit Breakers	NA		2 X 16A 1-pole hydraulic-magnetic circuit breakers		NA		6 X 16A 1-pole hydraulic-magnetic circuit breakers	
Physical	Mount Style	Horizontal (19" rackmountable)		Vertical					
	Width	482mm				55mm			
	Height	44.4mm	1738mm			1794mm			
	Depth	200mm				62mm			
	Housing material	Sheetmetal							
	Tool-less mounting	NA	Yes						
	Color	Black							
User Interface	Local User Interface	LCD Display, language:English							
	Local User Control	2 Buttons for scroll/select/Reset							
	Communication I/O	1 Network port , 1 Temperature/Humidity port, 2RS485 port sharing connection							
	Remote Management Capabilities	http/https, SNMP V1,V2,V3							
Environmental	Operating Temp	-5° to +50°C							
	Operating Humidity	5-95%RH, non-condensing							
	Elevation Operating/Storage	0–3 000 m / 0–15 000 m							
Regulatory	EMC	CE ,followed by standard EN55035, EN55032, EN55024							
	Safety	CE TÜV, followed by standard EN/IEC62368-1							
	Environment	RoHS, REACH							
Package	Rack Mounting Brackets	M6x16mm screw (4pcs), M6 cage nut (4pcs)	M5x10mm, self-tapping screw (4pcs), L type Bracket 2pcs, included screw						
	Safety Sheet	included							
	Installations Instructions	included							
	Package Dimension	560*220*80mm	1950*160*110mm						
	Weight/shipping weight	2.8KG/3.6KG	7.3KG/8.5KG	7.9 KG/9.0KG		6.2KG/7.78KG		8.17KG/9.45KG	8.28KG/9.56KG
Accessory	EPDU-TH3 (need to be ordered separately)								
Warranty		2 year							

Easy Metered by Outlet Rack PDU with NMC3

Easy Metered by Outlet Rack PDU range is now upgraded with APC NMC3 which makes it more secure and Ecostruxure IT ready. This offers advanced load monitoring combined with individual outlets metering for greater power management.



		EPDU2116MBO	EPDU2132MBO	EPDU2216MBO	EPDU2232MBO
Electrical	Nominal Voltage	230VAC 1 phase		400VAC 3 phase	
	Input Circuit	16A	32 A	16 A	32 A
	Input frequency	50/60 Hz			
	Input Connector	IEC309 16 A 2P+E	IEC309 32 A 2P+E	IEC309 16 A 3P+N+PE	IEC309 32A 3P+N+PE
	Input Cord Length	3m			
	Output Voltage	200-240VAC			
	Output Receptacles	(20) C13 & (4) C19		(18) C13 & (6) C19	
	Circuit Breakers	NA	2 x 16 A 1 Pole Hydraulic-Magnetic Circuit Breakers	NA	6 x 16 A 1 Pole Hydraulic-Magnetic Circuit Breakers
Physical	Mount Style	Vertical			
	Width	55 mm (2.16 in)			
	Height	1800 mm (70.86 in)			
	Depth	56 mm (2.20 in)			
	Housing material	Sheet metal			
	Tool-less mounting	Yes			
	Color	Black			
User Interface	Local User Interface	LCD Display; language: English			
	Local User Control	3 Buttons to scroll/select/Reset			
	Communication I/O	1 x 10/100M T-Base, upto 3 T&H sensor port, 2 x RS485 ports, 1 x RJ45 port, 1 USB port			
	Remote Management Capabilities	http/https; SNMP V1, V2, V3			
Environmental	Operating Temp	-5 - 50°C			
	Operating Humidity	5-95%RH, non-condensing			
	Elevation Operating/Storage	0–3000 m / 0–15000 m			
Regulatory	EMC	EN55035, EN55032, EN61000-3-3, EN61000-3-2, BSEN55035, BS EN55032, BS EN61000-3-3, BS EN61000-3-2			
	Safety	CE, TÜV (EN62368-1), RCM, UKCA, EAC			
	Environment	RoHS, REACH			
Package	Rack Mounting Brackets	M5 x 10mm, self-tapping screw (4pcs), L type Bracket 2pcs (incl. screw)			
	Safety Sheet	Print version included			
	Installations Instructions	Print version included			
	Package Dimension	2030 x 195 x 130 mm			
	Weight/shipping weight	6.37 kg/7.54 kg	7.12 kg/8.29 kg	6.82 kg/7.99 kg	8.38 kg/9.55 kg
Accessory	EPDU-TH3 (need to be ordered separately)				
Warranty	2 year				

Easy Metered by Outlet with Switching Rack PDU (APC NMC3 integrated)

Easy Metered by Outlet with Switching Rack PDU range is now upgraded with APC NMC3 which makes it more secure and Ecostruxure IT ready. This offers advanced load monitoring combined with remote on/off switching control & power metering on individual outlets.

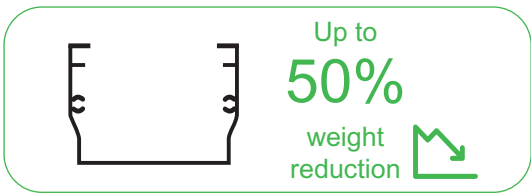


		EPDU2116SMBO	EPDU2132SMBO	EPDU2216SMBO	EPDU2232SMBO
Electrical	Nominal Voltage	230VAC 1 Phase		400VA 3 phase	
	Input Circuit	16A	32 A	16 A	32 A
	Input frequency	50/60 Hz			
	Input Connector	IEC309 16 A 2P+E	IEC309 32 A 2P+E	IEC309 16 A 3P+N+PE	IEC309 32A 3P+N+PE
	Input Cord Length	3m			
	Output Voltage	200-240VAC			
	Output Receptacles	(20) C13 & (4) C19		(18) C13 & (6) C19	
	Circuit Breakers	NA	2 x 16 A 1 Pole Hydraulic-Magnetic Circuit Breakers	NA	6 x 16 A 1 Pole Hydraulic-Magnetic Circuit Breakers
Physical	Mount Style	Vertical			
	Width	55 mm (2.16 in)			
	Height	1800 mm (70.86 in)			
	Depth	56 mm (2.20 in)			
	Housing material	Sheet metal			
	Tool-less mounting	Yes			
	Color	Black			
User Interface	Local User Interface	LCD Display; language: English			
	Local User Control	3 Buttons to scroll/select/Reset			
	Communication I/O	1 x 10/100M T-Base, upto 3 T&H sensor port, 2 x RS485 ports, 1 x RJ45 port, 1 USB port			
	Remote Management Capabilities	http/https; SNMP V1, V2, V3			
Environmental	Operating Temp	-5 - 50°C			
	Operating Humidity	5-95%RH, non-condensing			
	Elevation Operating/Storage	0–3000 m / 0–15000 m			
Regulatory	EMC	EN55035, EN55032, EN61000-3-3, EN61000-3-2, BSEN55035, BS EN55032, BS EN61000-3-3, BS EN61000-3-2			
	Safety	CE, TÜV (EN62368-1), RCM, UKCA, EAC			
	Environment	RoHS, REACH			
Package	Rack Mounting Brackets	M5 x 10mm, self-tapping screw (4pcs), L type Bracket 2pcs (incl. screw)			
	Safety Sheet	Print version included			
	Installations Instructions	Print version included			
	Package Dimension	2030 x 195 x 130 mm			
	Weight/shipping weight	6.67 kg/7.84 kg	7.42 kg/8.59 kg	7.12kg/8.29kg	8.68 kg/9.85 kg
Accessory		EPDU-TH3 (need to be ordered separately)			
Warranty		2 year			

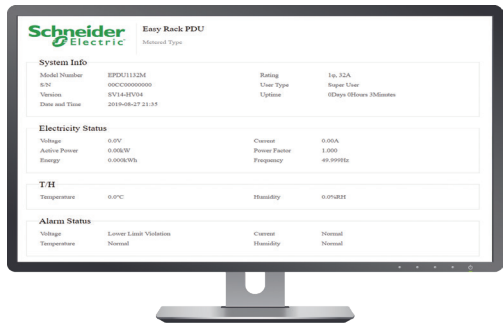
What's NEW

Ultra Light Weight

Reduce 50% weight, thanks to Aluminum housing



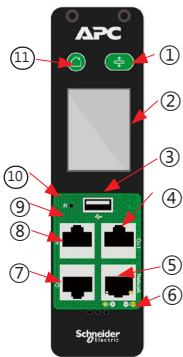
User-Friendly Web Interface



New-designed Display Module

- Smart, easy-to-use, multifunctional

NEW NMC3 Rack PDU display:



Item	Function	Description
①	Scroll button	Use the scroll button to move through displayed information
②	LCD Display	Show information about the Rack PDU
③	USB Port OK Button	Connect a flash drive for firmware upgrades or to download data logs With a menu option highlighted, press the OK button to display Rack PDU information
④	Out Port	RS485 port sharing connection
⑤	10/100/1000 Base-T Connector	Connect the Rack PDU to the network
⑥	Speakers	Speakers for audio
⑦	RJ45 Serial Port	Port for connecting the Rack PDU to a terminal emulator program for local access to the command line interface
⑧	In Port	RS485 port sharing connection
⑨	Temp/Humidity Port	Temp/Humidity sensor connection port
⑩	Reset Button	Reset the Rack PDU without affecting the status of individual outlets
⑪	Main Menu Button	Press to view the Rack PDU electrical input

Available Accessories

EPDU-TH / EPDU-TH3

Easy Rack PDU Temperature/Humidity Sensor



Easy Rack PDU environmental sensor with 2-meter cable and RJ45 connector that monitors temperature and humidity in your Data Center or Network Closet.

EPDU-BRKT

Easy Rack PDU Mounting Bracket one pair



Easy Rack PDU Bracket is used for mounting 2 Easy Basic Rack PDUs or Easy Metered Rack PDUs on the side of a NetShelter rack.

EPDU-PCG0B

Easy Rack PDU Power Cord, IEC309 (16A) to C20, 0.5m



Easy Rack PDU compatible cable connects an IEC 309-16A connector to an IEC C19 outlet. It can be used as a means to connect an Easy Rack PDU with IEC 309-16A connector to an APC single-phase UPS.

EPDU-PCC0B

Easy Rack PDU Power Cord , Schuko to C20, 0.5m



Easy Rack PDU compatible cable connects a Schuko CEE 7 connector to an IEC C19 outlet. It can be used as a means to connect an Easy Rack PDU with Schuko connector to an APC single-phase UPS.

Custom Easy Rack PDUs

Pre-configured or custom Easy Rack PDU designs to suit unique project and end-user requirements.

Make Power Distribution and Custom Easy

The APC Easy Rack PDU is an easy-to-install, easy-to-use, easy-to-customize rack mount PDU that helps manage power distribution to the equipment efficiently in the rack.

Ability to customize Rack PDUs and pre-configure them to meet your needs. Some options are configured in quick turnaround with a minimum order quantity of 50!

Length Pre-configuration of Input Cord

Lengthen or shorten the length of a power cord. It is flexible for the customers to choose the right power cord length according to the actual situation of the data center site.

Lockable outlets

Custom Easy Rack PDU provides the ability to choose the lockable C13/C19 outlets. It can prevent the power line from loosening accidentally, which leads to power failure of the equipment.

Color Coding Rack PDUs

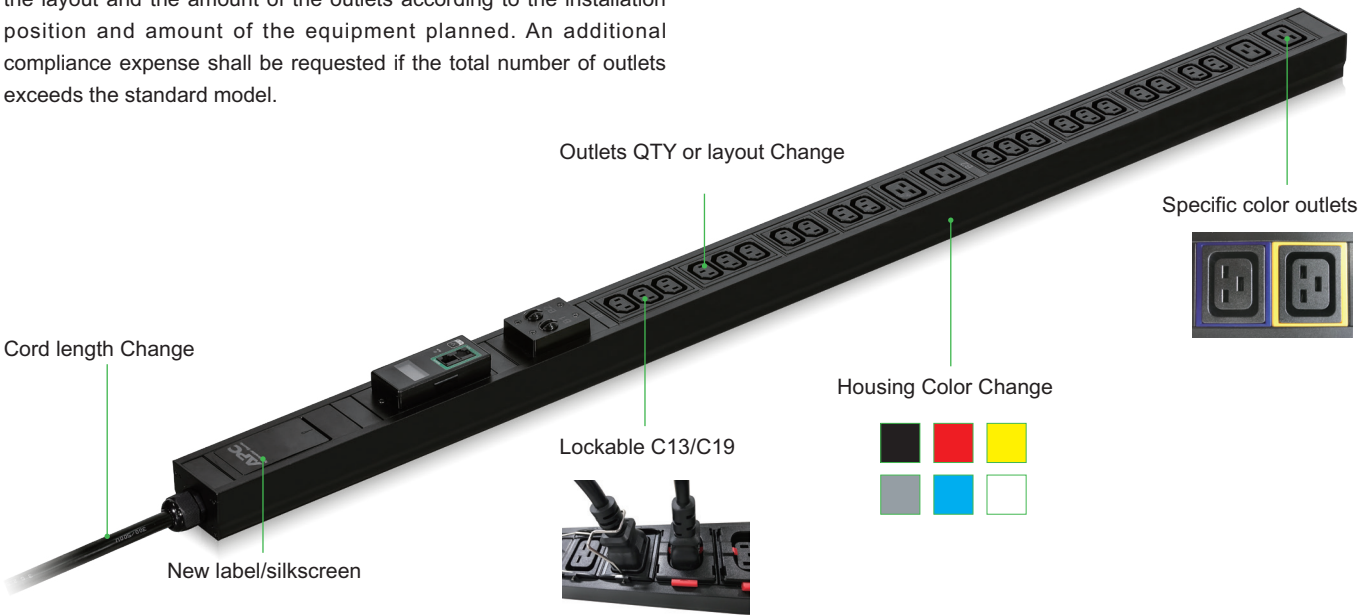
Including housing color change or the outlets surrounding color change. Color coding is proven to provide many benefits, most importantly reducing human error, the major culprit of downtime.

Specific labels/silkscreen

Custom Easy PDU provides the ability to specify the labels/silkscreen according to customer needs.

Outlet layout and amount

New flexible Rack PDU architecture provides the ability to adjust the layout and the amount of the outlets according to the installation position and amount of the equipment planned. An additional compliance expense shall be requested if the total number of outlets exceeds the standard model.



Addressing unique needs with the service you expect from Schneider Electric

- Dedicated team to assist from design to delivery
- Competitive pricing model
- Optimized lead times for special orders
- Fast turn around times for product modifications
- Global supply chain with Schneider Electric

For requests and more details e-mail: easycustomracks@se.com

Life Is On



Find out more:

The Rack PDU Selector tool is located at:

<https://www.apc.com/shop/uk/en/rack-pdu-selector/>

Schneider Electric

One Boston Place
Floor 27
Boston, MA 02108
United States
www.apc.com

April 2025

©2024 Schneider Electric. All Rights Reserved.
Schneider Electric | Life Is On and APC are trademarks and the property of Schneider Electric SE, its subsidiaries, and affiliated companies.
• 998-21912450_GMA-US