

**INFORMATION****55" 4K UHD professional digital signage display with advanced control and connectivity options**

Elevate your visual communication with the LH5560UHS-B2AG and unlock the new possibilities for your business. This 500cd/m<sup>2</sup> high brightness display is a powerful business tool that takes your marketing and communication efforts to the next level. With its Android 11 OS, [iiSignage<sup>2</sup>](#) (Content Management Software), Signal FailOver, and [EShare](#) features, this display offers a straightforward user experience, making content creation, management, and sharing a breeze.

This ELED VA display consumes significantly less power compared to DLED IPS while maintaining the same level of brightness. Its versatile orientation, sleek design, and 24/7 reliability ensure it seamlessly integrates into any business environment. Whether it's used in retail, corporate, hospitality, or educational settings, the LH5560UHS-B2AG will undoubtedly captivate your audience and leave a lasting impression.



## Android OS

Thanks to Android OS, you can easily customize the display to your needs by installing applications directly to it.

## 4 SIMPLE STEPS

TO REACH YOUR AUDIENCE



## iiSignage<sup>2</sup>

iiSignage<sup>2</sup> is our digital signage content management platform to easily show and control your content and to manage your displays in a secure way. The Content Management System (CMS) gives you total control of your messaging and advertising remotely and safely.



## Signal FailOver

FailOver is a feature which automatically detects input sources. When there is no signal on the default input it will automatically switch to the next available input. FailOver allows customers to prioritize a number of inputs (incl. Browser, Media Player and Custom) and ensures your content is always actively displayed, assuring active content at all times.



## Ultra Slim

With 50 percent depth saving over similar models, the jaw-dropping and best in class 40mm total depth display can be installed discretely and elegantly in all areas.

## SPECIFICATION

### 01 DISPLAY CHARACTERISTICS

<b>Design</b>	Thin bezel
<b>Diagonal</b>	54.6", 139cm
<b>Panel</b>	VA, Anti-Glare Coated Glass, Hard Coating (3H), haze 25%
<b>Native resolution</b>	3840 x 2160 @60Hz (8.3 MegaPixels 4K UHD)
<b>Aspect ratio</b>	16:9
<b>Panel brightness</b>	500 cd/m <sup>2</sup>
<b>Static contrast</b>	4000:1
<b>Response time (GTG)</b>	6.5ms
<b>Viewing zone</b>	horizontal/vertical: 178°/178°, right/left: 89°/89°, up/down: 89°/89°
<b>Colour support</b>	1.07G (8 Bits+FRC) (NTSC 87%)
<b>Horizontal Sync</b>	28 - 160kHz
<b>Viewable area W x H</b>	1209.6 x 680.4mm, 47.6 x 28.8"
<b>Bezel width (sides, top, bottom)</b>	13.3mm, 13.3mm, 15.3mm
<b>Pixel pitch</b>	0.315mm
<b>Bezel colour and finish</b>	black, matte

### 02 INTERFACES / CONNECTORS / CONTROLS

<b>Digital signal input</b>	HDMI x3 (2.0, max. 3840x2160 @60Hz)
<b>Monitor control input</b>	RS-232c x1 RJ45 (LAN) x1
<b>Audio output</b>	Mini jack x1 (3.5mm) Speakers 2 x 10W
<b>HDCP</b>	1.4 & 2.2
<b>USB ports</b>	x2 (2.0)

### 03 FEATURES

<b>Integrated software</b>	Android 11 OS, FailOver, iiSignage <sup>2</sup> , EShare
<b>WiFi</b>	yes (Built-in, 802.11ac)
<b>Hardware</b>	CPU: A53*4, GPU: G52 MP2, RAM: 2GB, ROM: 16GB
<b>Extra</b>	Wall mounting kit included (VESA 300x400mm)
<b>Max. non-stop operating time</b>	24/7
<b>Anti image retention</b>	yes
<b>Media playback</b>	yes
<b>Housing (bezel)</b>	metal (front)

### 04 GENERAL

<b>OSD languages</b>	EN, DE, FR, ES, IT, CN, RU, JP, CZ, NL, PL, SV, FI, DA, NB
<b>Control buttons</b>	Power button, Power Indicator, Remote Sensor
<b>User controls</b>	picture (brightness, contrast, sharpness, black level, tint, colour, noise reduction, gamma selection, colour temperature, colour control, over scan, picture reset), screen (zoom mode, custom zoom, screen reset), Audio (balance, treble, bass, volume, audio out, maximum volume, minimum volume, mute, audio out sync, speaker setting, audio reset), configuration 1 (switch on state, panel saving, RS232-routing, boot on source, WOL, configuration 1 reset, factory reset), Configuration 2 (OSD timeout, OSD H-Position, OSD V-position, system rotation, information OSD, logo and animation logo setting, animation setting, monitor ID, monitor information, HDMI version, configuration 2 reset), advanced option (IR control, off timer, schedule, HDMI with one wire, HDMI with one wire power off, FailOver, language, OSD transparency, power saving, advanced option reset), Android settings (network & internet, apps & notifications, display, signage display, security, language & input, date & time, about device)
<b>Plug&amp;Play</b>	DDC2B

## 05 MECHANICAL

<b>Orientation</b>	landscape, portrait
<b>Fanless design</b>	yes
<b>VESA mounting</b>	300 x 400mm
<b>Operation temperature range</b>	0°C - 40°C
<b>Storage temperature range</b>	- 20°C - 60°C
<b>MTBF</b>	50.000 hours (excluding backlight)

## 06 ACCESSORIES INCLUDED

<b>Cables</b>	power (1.8m), HDMI (1.8m), RS-232c (1.8m)
<b>Guides</b>	quick start guide, safety guide
<b>Other</b>	Wall mount bracket, Wall mount guide, Screws, Screw anchors, Stickers for screw holes
<b>Remote control</b>	yes (batteries included)

## 07 POWER MANAGEMENT

<b>Energy Star 8.0 (POn at 230V)</b>	56.2W
<b>Power supply unit</b>	internal
<b>Power supply</b>	AC 100 - 240V, 50/60Hz
<b>Power usage</b>	55W typical, 0.5W stand by, 0.3W off mode

## 08 SUSTAINABILITY

<b>Regulations</b>	CB, CE, TÜV-Bauart, EAC, RoHS support, ErP, WEEE, REACH, UKCA
<b>Energy efficiency class (Regulation (EU) 2017/1369)</b>	E
<b>REACH SVHC</b>	above 0.1%: Lead, Lead monoxide, Diboron trioxide

## 09 DIMENSIONS / WEIGHT

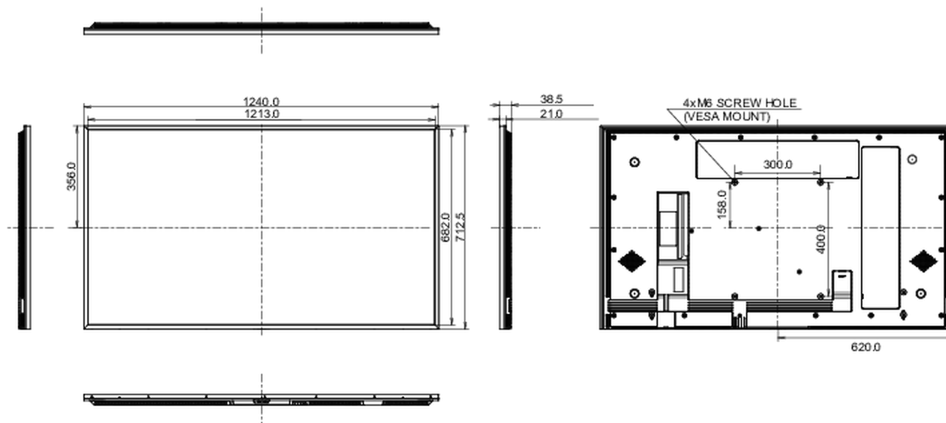
**Product dimensions** 1239.7 x 712.5 x 38.6mm  
W x H x D

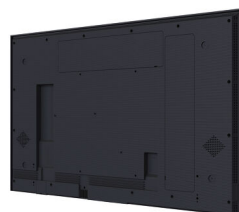
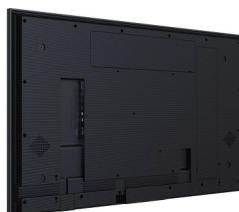
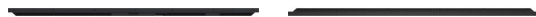
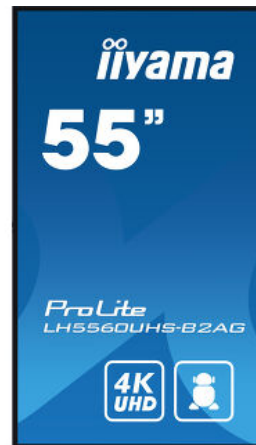
**Box dimensions W x H x D** 1390 x 850 x 136mm

**Weight (without box)** 17.6kg

**Weight (with box)** 22.9kg

**EAN code** 4948570125685







All trademarks and registered trademarks acknowledged. E & O E. Specification subject to change without notice. All LCD's comply with ISO-9241-307:2008 in connection with pixel defects. © **IYAMA CORPORATION. ALL RIGHTS RESERVED**