

Alienware 27 280Hz QD-OLED Gaming Monitor AW2725D

Teardown Instructions

Notes, cautions, and warnings

- ① **NOTE:** A NOTE indicates important information that helps you make better use of your product.
- △ **CAUTION:** A CAUTION indicates either potential damage to hardware or loss of data and tells you how to avoid the problem.
- ⚠ **WARNING:** A WARNING indicates a potential for property damage, personal injury, or death.

Contents

Safety instructions	4
Before working inside your monitor	4
After working inside your monitor	4
Disassembly and reassembly	5
Recommended tools	5
Screw list	5
Stand	6
Removing the stand	6
Installing the stand	7
Back cover	8
Removing the back cover	8
Installing the back cover	9
Backlight module	10
Removing the backlight module	10
Installing the backlight module	11
USB board	12
Removing the USB board	12
Installing the USB board	13
Joystick board	14
Removing the joystick board	14
Installing the joystick board	15
Main chassis	16
Removing the main chassis	16
Installing the main chassis	17
Middle frame	18
Removing the middle frame	18
Installing the middle frame	19
Keypad board	20
Removing the keypad board	20
Installing the keypad board	21
Front trim	22
Removing the front trim	22
Installing the front trim	23
Main board	24
Removing the main board	24
Installing the main board	25
Power board	26
Removing the power board	26
Installing the power board	27
Fan	28
Removing the fan	28
Installing the fan	29
Contacting Dell	30

Safety instructions

Use the following safety guidelines to protect your monitor from potential damage and to ensure your personal safety. Unless otherwise noted, each procedure included in this document assumes that you have read the safety information that shipped with your monitor.

- ① **NOTE:** Before using the monitor, read the safety information that is shipped with your monitor and printed on the product. Keep the documentation at a secure location for future reference.
- ⚠ **WARNING: Use of controls, adjustments, or procedures other than those specified in this documentation may result in exposure to shock, electrical hazards and/or mechanical hazards.**
- ⚠ **CAUTION: The possible long-term effect of listening to audio at high volume through the headphones (on monitor that supports it) can damage to your hearing ability.**
- Place the monitor on a solid surface and handle it carefully.
 - The screen is fragile and can be damaged if dropped or press with a sharp object.
 - Ensure that your monitor is electrically rated to operate with the AC power available in your location.
 - Keep the monitor in room temperature. Excessive cold or hot conditions can have an adverse effect on the liquid crystal of the display.
 - Connect the power cable from the monitor to a wall outlet that is near and accessible. See Connecting your monitor.
- Do not place and use the monitor on a wet surface or near water.
- Do not subject the monitor to severe vibration or high impact conditions. For example, do not place the monitor inside a car trunk.
- Unplug the monitor when it is going to be left unused for an extended period.
- To avoid electric shock, do not attempt to remove any cover or touch the inside of the monitor.
- Read these instructions carefully. Keep this document for future reference. Follow all warnings and instructions marked on the product.
- Certain monitors can be wall mounted using the VESA mount that is sold separately. Ensure to use the correct VESA specifications as mentioned in the wall mounting section of the User's Guide.

For information about safety instructions, see the Safety, Environmental, and Regulatory Information (SERI) document that is shipped with your monitor.

Before working inside your monitor

Steps

1. Save and close all open files and exit all open applications.
2. Turn off your monitor.
3. Disconnect your monitor and all attached devices from their electrical outlets.
4. Disconnect all attached network devices and peripherals, such as keyboard, mouse, and dock from your monitor
- ⚠ **CAUTION: To disconnect a network cable, first unplug the cable from your monitor and then unplug the cable from the network device.**
5. Remove any media card and optical disc from your monitor, if applicable.

After working inside your monitor

- ⚠ **CAUTION: Leaving stray or loose screws inside your monitor may severely damage your monitor.**

Steps

1. Replace all screws and ensure that no stray screws remain inside your monitor.
2. Connect any external devices, peripherals, or cables you removed before working on your monitor.
3. Replace any media cards, discs, or any other parts that you removed before working on your monitor.
4. Connect your monitor and all attached devices to their electrical outlets.
5. Turn on your monitor.

Disassembly and reassembly

⚠ **CAUTION:** The information in this section is intended for authorized service technicians in the EMEA region. Dell prohibits users from disassembling the monitor, and any damage caused by unauthorized servicing will not be covered under the warranty.

Recommended tools












The procedures in this document may require the following tools:

- Phillips screwdriver #0
- Phillips screwdriver #2
- Penknife

Screw list

- ① **NOTE:** When removing screws from a component, it is recommended to note the screw type, the quantity of screws, and then place them in a screw storage box. This is to ensure that the correct number of screws and correct screw type is restored when the component is replaced.
- ① **NOTE:** Some monitors have magnetic surfaces. Ensure that the screws are not left attached to such surfaces when replacing a component.
- ① **NOTE:** Screw color may vary with the configuration ordered.

Table 1. Screw List

Component	Screw type	Quantity	Screw image
Back cover	M4x11	4	
Backlight module	M2x3.8	2	
USB board	M3x6	1	
Joystick board	M3x6	2	
Main chassis	M3x4	4	
Middle frame	M3x5	20	
Keypad Board	M2x2.4	2	
Grounding wire	M4x8	1	
Power board	M3x6	4	
Main board	M3x6	4	
Fan	M3x6	2	

Stand

Removing the stand

Prerequisites

1. Follow the procedure in [Before working inside your monitor.](#)
- △ **CAUTION:** To prevent scratches on the screen when removing the stand, ensure that the monitor is placed on a soft surface and handle it carefully.
 - △ **CAUTION:** The following steps are specifically for removing the stand that is shipped with your monitor. If you are removing a stand that you purchased from any other source, follow the setup instructions that are included with the stand.
 - ① **NOTE:** Before removing the stand, ensure that you have disconnected all the cables from the monitor.

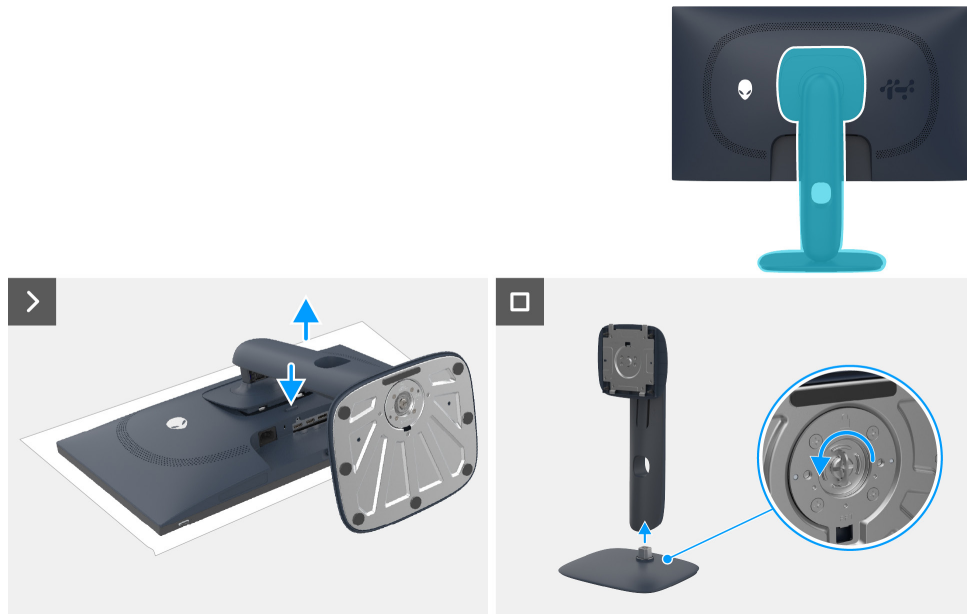


Figure 1. Removing the stand

Steps

1. Set the monitor on a clean, flat surface with a soft cloth or cushion underneath.
2. Press and hold the stand release button at the back of the display.
3. Lift the stand assembly up and away from the monitor.
4. Open the screw handle at the bottom of the stand base and turn it anticlockwise to unlock the riser with the base.
5. Detach the stand riser from the stand base.

Installing the stand



Figure 2. Installing the stand

Steps

1. Align and insert the stand riser into the stand base until it snaps into place.
2. Open the screw handle at the bottom of the stand base and turn it clockwise to secure the stand assembly.
3. Close the screw handle.
4. Align the tabs on the stand with the grooves at the back of the monitor.
5. Slide and gently press the stand assembly until it snaps into place.

Next steps

1. Follow the procedure in [After working inside your monitor.](#)

Back cover

Removing the back cover

Prerequisites

1. Follow the procedure in [Before working inside your monitor.](#)
2. Remove the [stand](#).

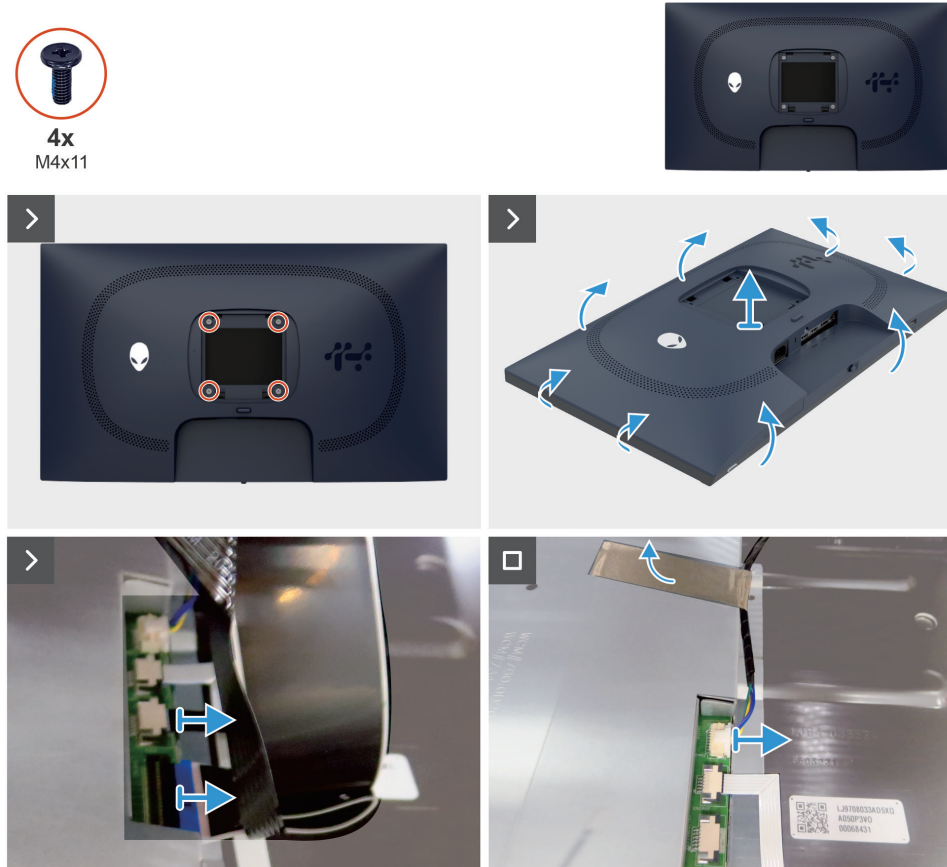


Figure 3. Removing the back cover

Steps

1. Remove the four screws (M4x11) that secure the back cover to the display assembly.
2. Using both hands, start prying the back cover off from the left and right sides, then proceed to the top and bottom.
3. Lift the back cover partially from the bottom edge.
4. Disconnect the USB cable and the Joystick cable from the connector on the main board.
5. Peel the tape away from the chassis and disconnect the backlight cable from the connector on the main board.
6. Remove the back cover from the display assembly.

Installing the back cover

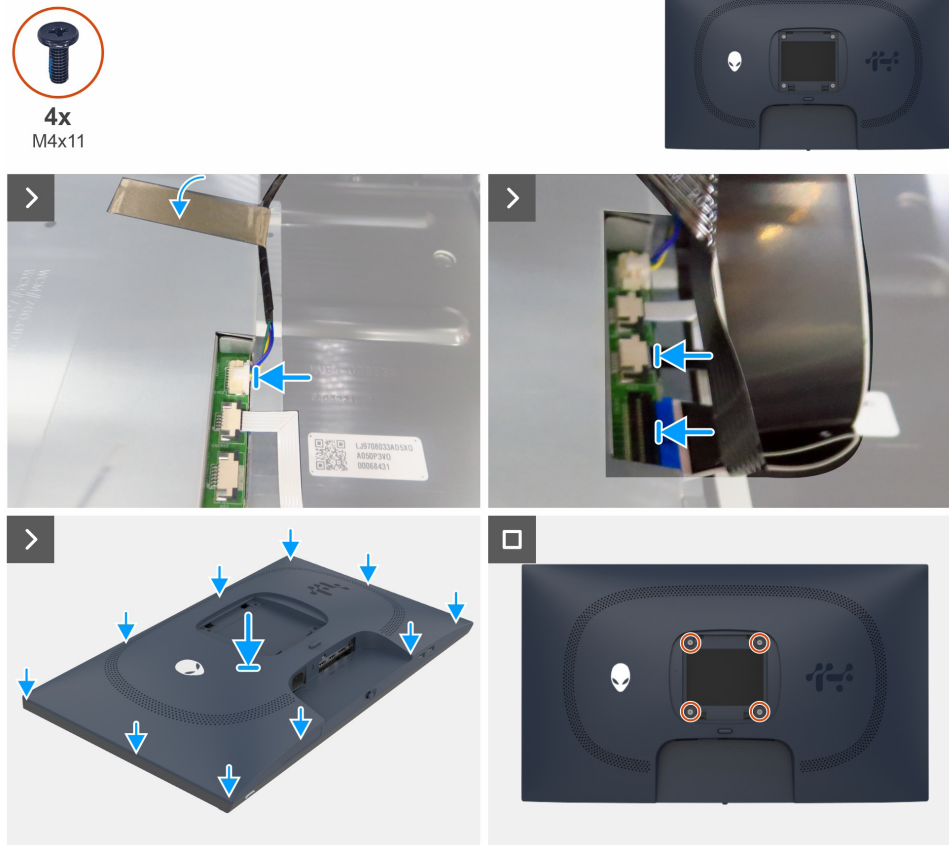


Figure 4. Installing the back cover

Steps

1. Connect the backlight cable to the connector on the main board.
2. Adhere the tape to the back light cable on the main chassis.
3. Connect the joystick cable and USB cable to the connector on the main board.
4. Align the slots on the back cover with the slots on the chassis, then press along the sides to snap the back cover into place.
5. Replace the four screws (M4x11) that secure the back cover to the display assembly.

Next steps

1. Install the [stand](#).
2. Follow the procedure in [After working inside your monitor](#).

Backlight module

Removing the backlight module

Prerequisites

1. Follow the procedure in [Before working inside your monitor.](#)
2. Remove the [stand](#).
3. Remove the [back cover](#).

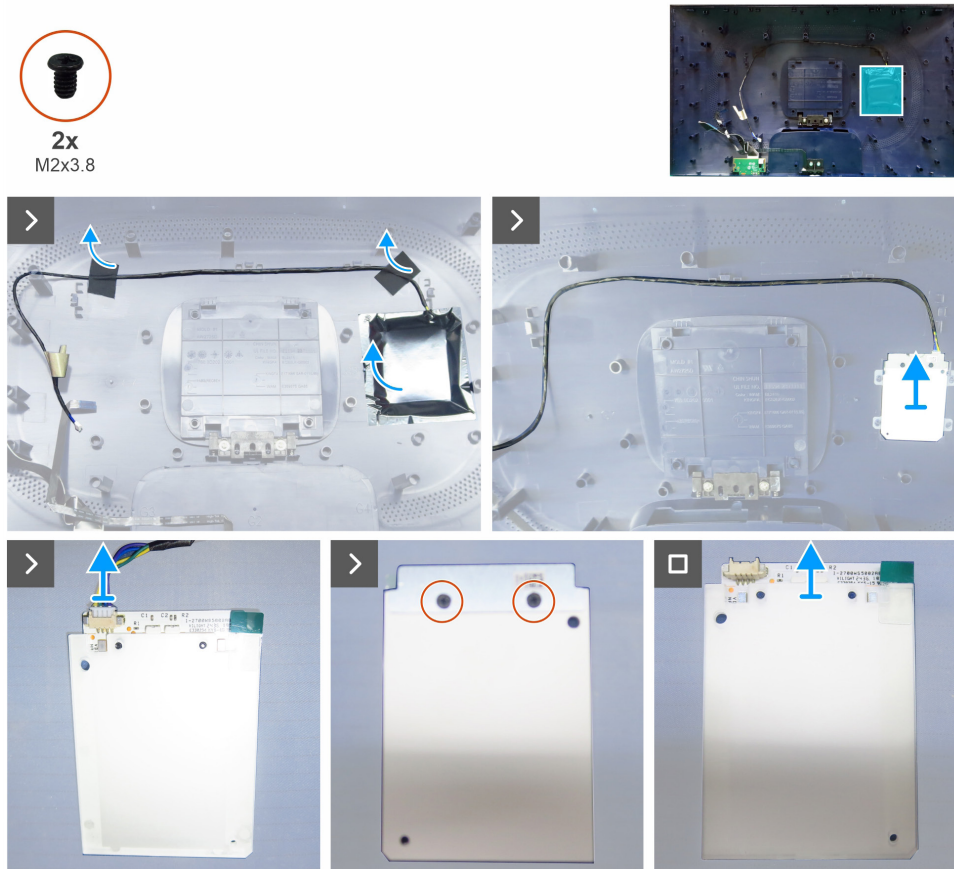


Figure 5. Removing the backlight module

Steps

1. Peel the shading tape that secures the backlight module to the back cover.
2. Peel all the tapes on the backlight cable.
3. Remove the backlight module from the slots on the back cover.
4. Disconnect the backlight cable from the backlight module.
5. Remove the two screws (M2x3.8) that secures the backlight board to the light guide plate (LGP).

Installing the backlight module



Figure 6. Installing the backlight module

Steps

1. Peel the release paper of the double-sided tape on the backlight board and adhere the backlight board to the light guide plate (LGP).
2. Replace the two screws (M2x3.8) that secure the backlight to the LGP.
3. Connect the light cable to the backlight board.
4. Replace the backlight module into the slots on the back cover.
5. Adhere the tape to secure the backlight cable.
6. Adhere the shading tape that secures the backlight module to the back cover.

Next steps

1. Install the [back cover](#).
2. Install the [stand](#).
3. Follow the procedure in [After working inside your monitor](#).

USB board

Removing the USB board

Prerequisites

1. Follow the procedure in [Before working inside your monitor](#).
2. Remove the [stand](#).
3. Remove the [back cover](#).
4. Remove the [backlight module](#).

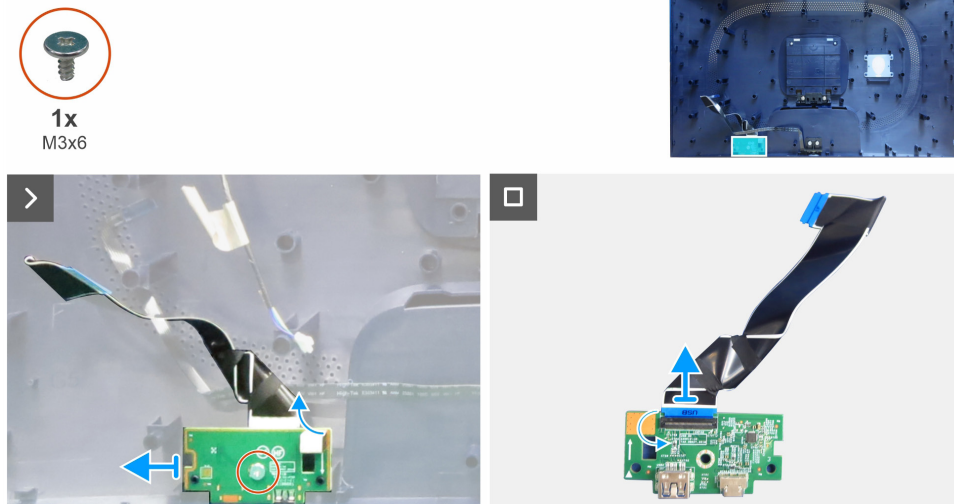


Figure 7. Removing the USB board

Steps

1. Peel the foam from the back of the USB board.
2. Remove the screw (M3x6) that secures the USB board to the back cover.
3. Remove the USB board from the back cover.
4. Open the latch and disconnect the USB cable from the USB board.

Installing the USB board

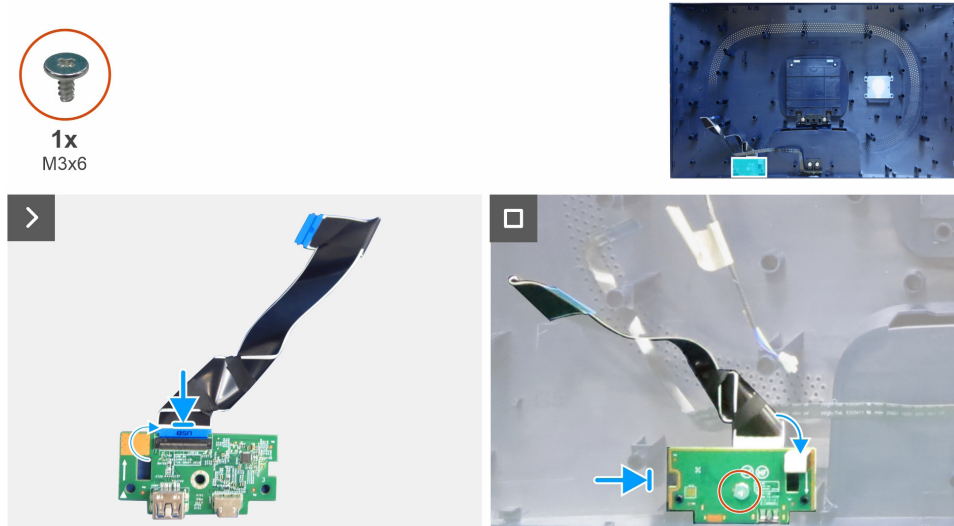


Figure 8. Installing the USB board

Steps

1. Connect the USB cable to the USB board and close the latch.
2. Align the screw hole on the USB board with the screw hole on the back cover.
3. Replace the screw (M3x6) that secures the USB board to the back cover.
4. Adhere the foam on the back of the USB board.

Next steps

1. Install the the [backlight module](#).
2. Install the [back cover](#).
3. Install the [stand](#).
4. Follow the procedure in [After working inside your monitor](#).

Joystick board

Removing the joystick board

Prerequisites

1. Follow the procedure in [Before working inside your monitor](#).
2. Remove the [stand](#).
3. Remove the [back cover](#).
4. Remove the [backlight module](#).
5. Remove the [USB board](#).



Figure 9. Removing the joystick board

Steps

1. Remove the two screws (M3x6) that secure the joystick board to the back cover.
2. Remove the joystick board from the holder.
3. Pull the joystick cap off the joystick board.

Installing the joystick board

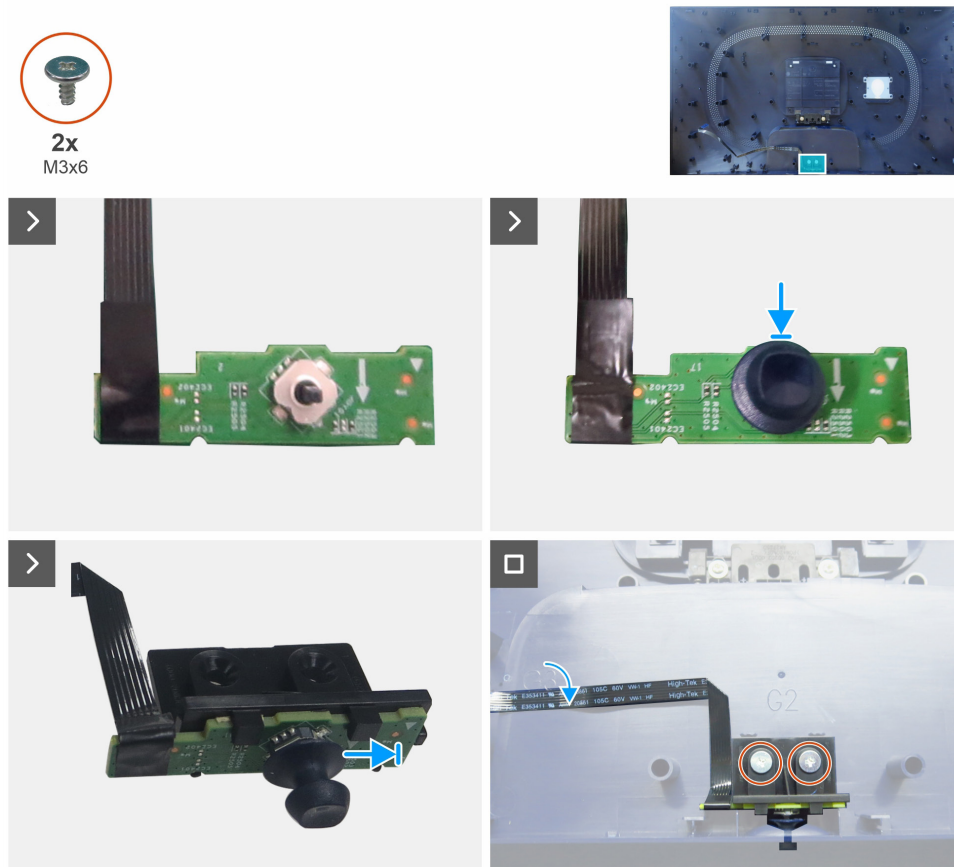


Figure 10. Installing the joystick board

Steps

1. Attach the joystick cap to the joystick board.
2. Reattach the joystick board to the holder.
3. Replace the two screws (M3x6) that secure the joystick board to the back cover.
4. Adhere the joystick cable to the back cover.

Next steps

1. Install the [USB board](#).
2. Install the [backlight module](#).
3. Install the [back cover](#).
4. Install the [stand](#).
5. Follow the procedure in [After working inside your monitor](#).

Main chassis

Removing the main chassis

Prerequisites

1. Follow the procedure in [Before working inside your monitor](#).
2. Remove the [stand](#).
3. Remove the [back cover](#).
4. Remove the [backlight module](#).
5. Remove the [USB board](#).
6. Remove the [joystick board](#).

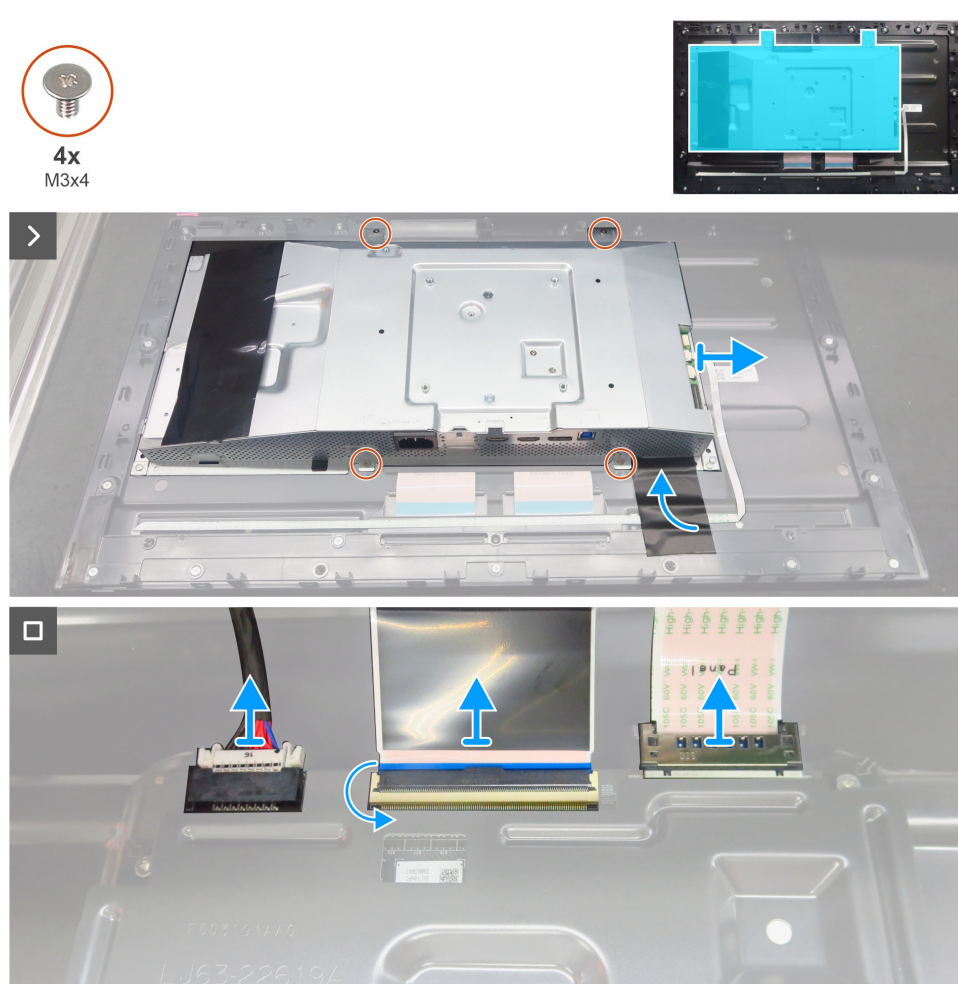


Figure 11. Removing the main chassis

Steps

1. Peel the tape and disconnect the keypad cable from the main board.
2. Remove four screws (M3x4) that secure the main chassis to the display panel.
3. Lift the main chassis and disconnect power connective cable, FFC cable and LVDS cable from the display panel.
4. Remove the main chassis away from the display panel.

Installing the main chassis

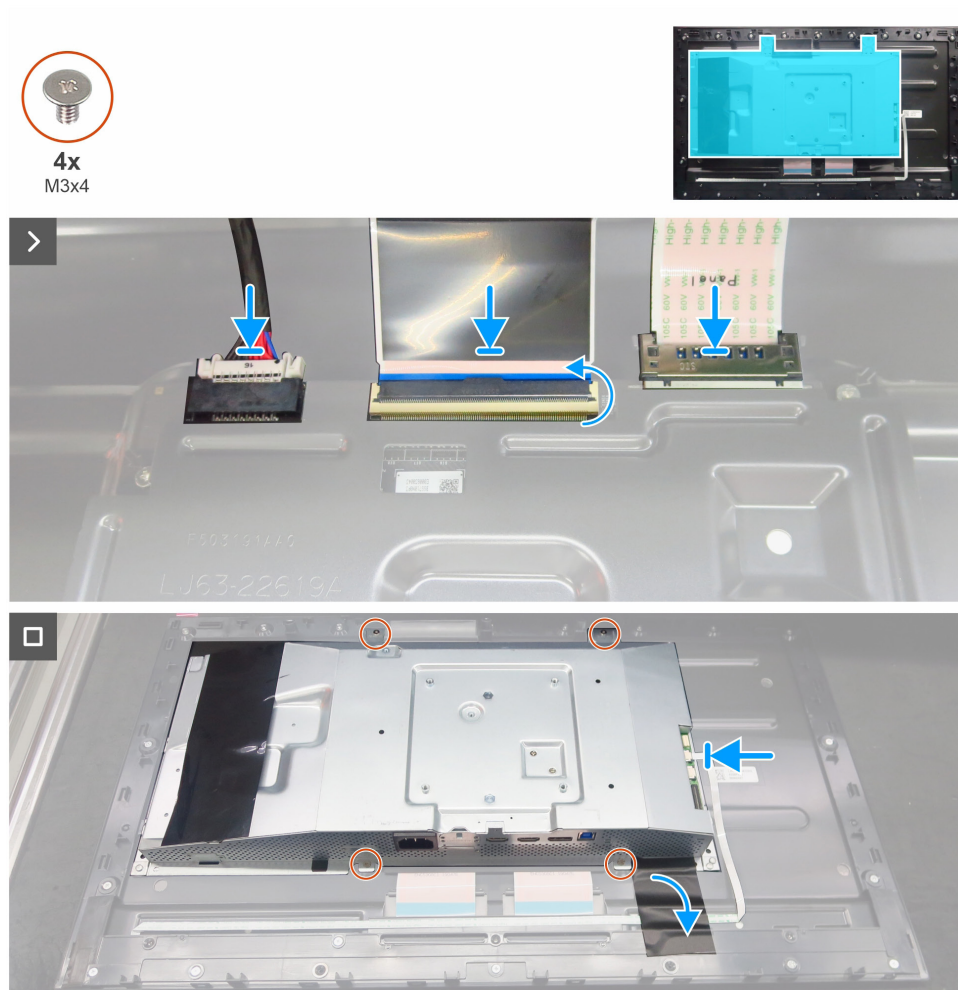


Figure 12. Installing the main chassis

Steps

1. Lift the main chassis and connect the LVDS cable, FFC cable and power connective to the connectors on the display panel.
2. Align the screw holes on the main chassis with the screw holes on the display panel.
3. Replace the four screws (M3x4) that secure the main chassis to the display panel.
4. Connect the keypad cable to the main board and adhere the tape to secure the cable.

Next steps

1. Install the [joystick board](#).
2. Install the [USB board](#).
3. Install the [backlight module](#).
4. Install the [back cover](#).
5. Install the [stand](#).
6. Follow the procedure in [After working inside your monitor](#).

Middle frame

Removing the middle frame

Prerequisites

1. Follow the procedure in [Before working inside your monitor.](#)
2. Remove the [stand.](#)
3. Remove the [back cover.](#)
4. Remove the [backlight module.](#)
5. Remove the [USB board.](#)
6. Remove the [joystick board.](#)
7. Remove the [main chassis.](#)

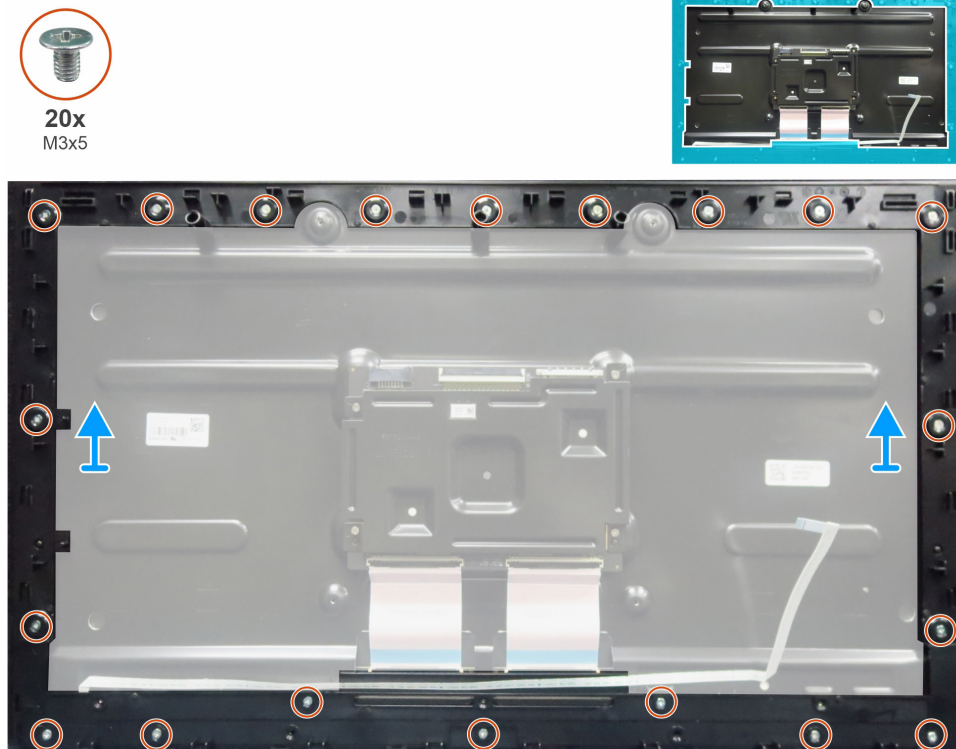


Figure 13. Removing the middle frame

Steps

1. Remove the 20 screws (M3x5) that secure the middle frame to the display panel.
2. Peel the tape and remove the keypad cable from the display panel.
3. Lift and remove the middle frame away from the display panel.

Installing the middle frame

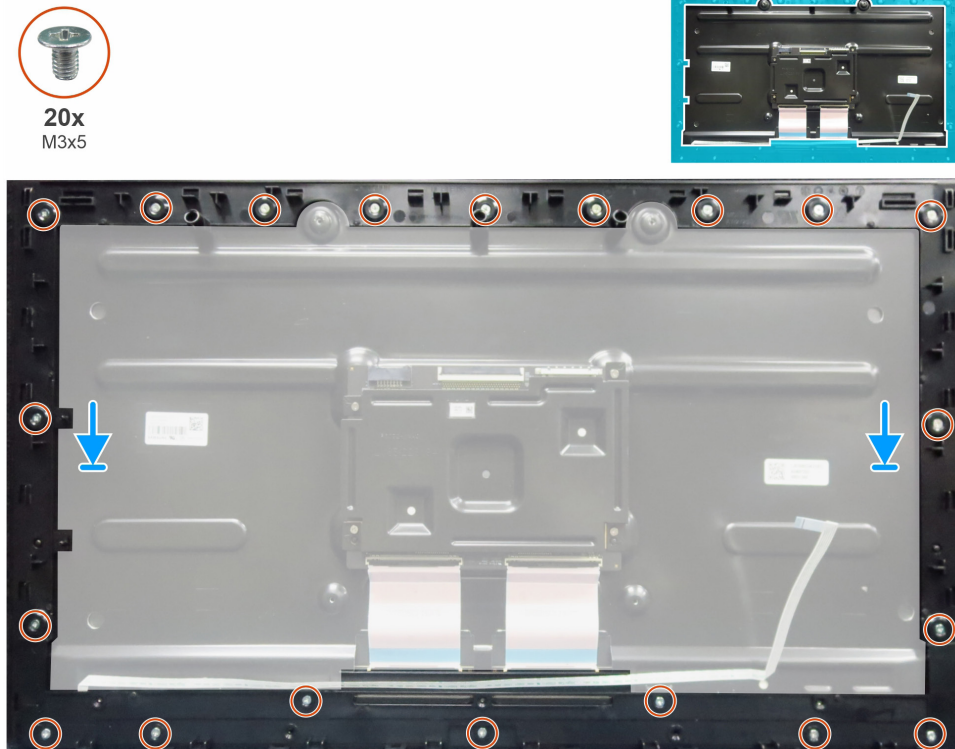


Figure 14. Installing the middle frame

Steps

1. Align the screw holes of the middle frame with the screw holes on the display panel and place it down.
2. Replace the 20 screws (M3x5) that secure the middle frame to the display panel.
3. Adhere the keypad cable on the back of display panel.

Next steps

1. Install the [main chassis](#).
2. Install the [joystick board](#).
3. Install the [USB board](#).
4. Install the [backlight module](#).
5. Install the [back cover](#).
6. Install the [stand](#).
7. Follow the procedure in [After working inside your monitor](#).

Keypad board

Removing the keypad board

Prerequisites

1. Follow the procedure in [Before working inside your monitor](#).
2. Remove the [stand](#).
3. Remove the [back cover](#).
4. Remove the [backlight module](#).
5. Remove the [USB board](#).
6. Remove the [joystick board](#).
7. Remove the [main chassis](#).
8. Remove the [middle frame](#).

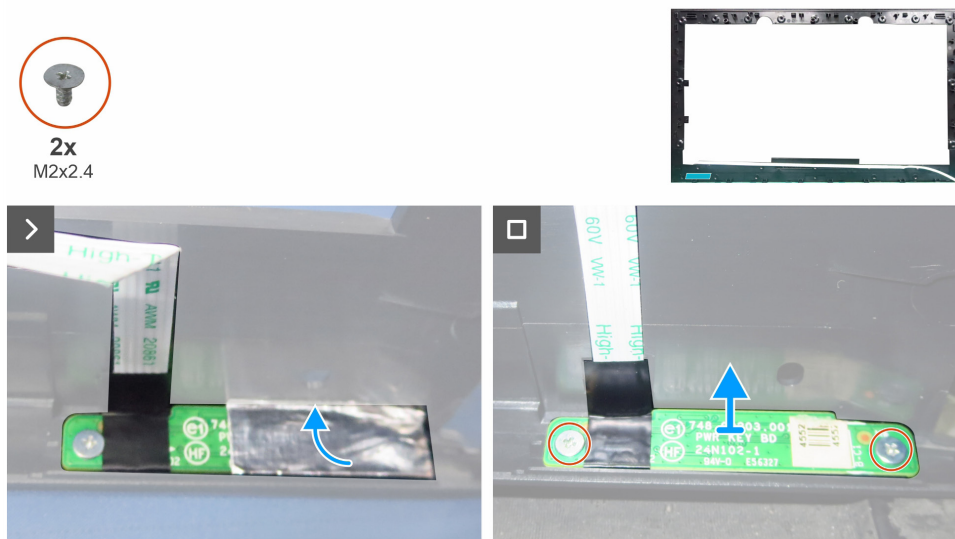


Figure 15. Removing the keypad board

Steps

1. Peel the aluminum foil from the keypad board.
2. Remove the two screws (M2x2.4) that secure the keypad board to the middle frame.
3. Remove the keypad board from the middle frame.

Installing the keypad board

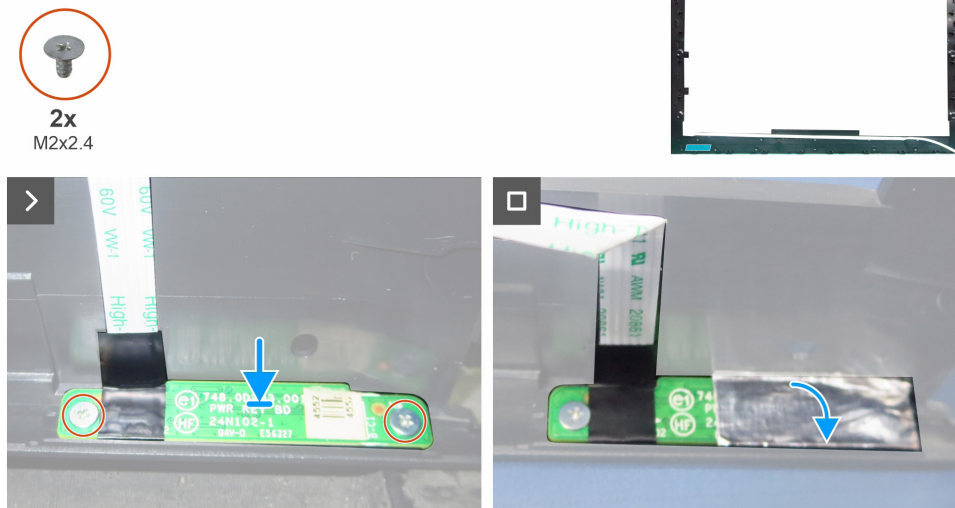


Figure 16. Installing the keypad board

Steps

1. Align the screw holes of the keypad with the holes on the middle frame and place it down.
2. Replace the two screws (M2x2.4) that secure the keypad board to the middle frame.
3. Adhere the aluminum foil on the keypad board.

Next steps

1. Install the [middle frame](#).
2. Install the [main chassis](#).
3. Install the [joystick board](#).
4. Install the [USB board](#).
5. Install the [backlight module](#).
6. Install the [back cover](#).
7. Install the [stand](#).
8. Follow the procedure in [After working inside your monitor](#).

Front trim

Removing the front trim

Prerequisites

1. Follow the procedure in [Before working inside your monitor.](#)
2. Remove the [stand.](#)
3. Remove the [back cover.](#)
4. Remove the [backlight module.](#)
5. Remove the [USB board.](#)
6. Remove the [joystick board.](#)
7. Remove the [main chassis.](#)
8. Remove the [middle frame.](#)
9. Remove the [keypad board.](#)



Figure 17. Removing the front trim

Steps

1. Lift the display panel and remove the front bezel from the display panel.

Installing the front trim



Figure 18. Installing the front trim

Steps

1. Lift the display panel and replace the front trim with the bottom side of the display panel.

Next steps

1. Install the [keypad board](#).
2. Install the [middle frame](#).
3. Install the [main chassis](#).
4. Install the [joystick board](#).
5. Install the [USB board](#).
6. Install the [backlight module](#).
7. Install the [back cover](#).
8. Install the [stand](#).
9. Follow the procedure in [After working inside your monitor](#).

Main board

Removing the main board

Prerequisites

1. Follow the procedure in [Before working inside your monitor](#).
2. Remove the [stand](#).
3. Remove the [back cover](#).
4. Remove the [backlight module](#).
5. Remove the [USB board](#).
6. Remove the [joystick board](#).
7. Remove the [main chassis](#).
8. Remove the [middle frame](#).
9. Remove the [keypad board](#).
10. Remove the [front trim](#).

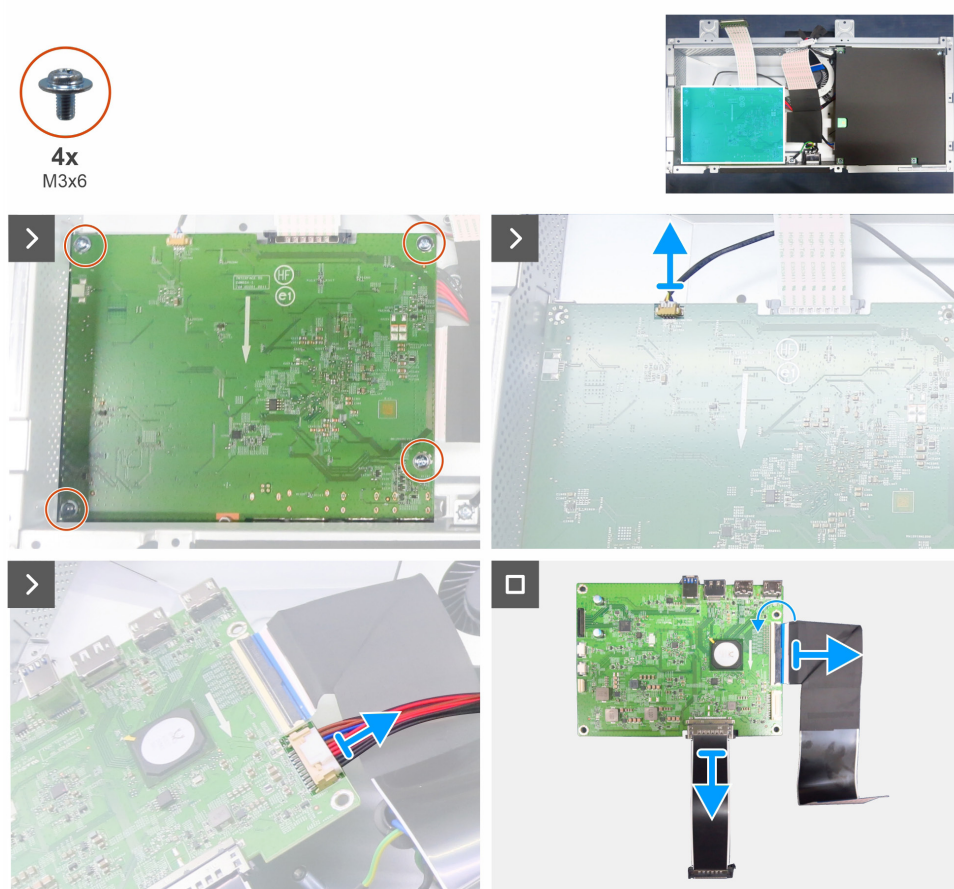


Figure 19. Removing the main board

Steps

1. Remove the four screws (M3x6) that secure the main board to the main chassis.
2. Disconnect the fan cable from the connector on the main board.
3. Disconnect the power connector cable from the connector on the main board.
4. Remove the main board and disconnect the FFC cable and LVDS cable from the connectors on the main board.

Installing the main board

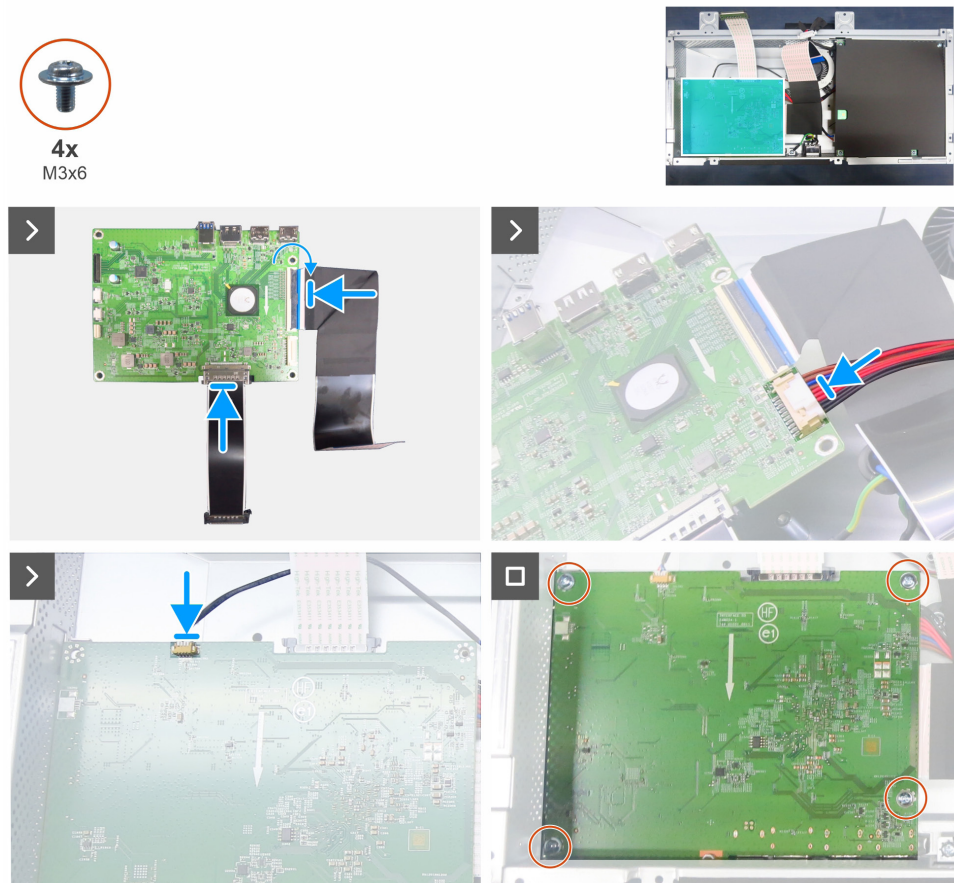


Figure 20. Installing the main board

Steps

1. Connect the FFC cable and LVDS cable to the connectors on the main board.
2. Connect the power connective cable to the main board and place the main board to the main chassis.
3. Replace the four screws (M3x6) that secure the main board to the main chassis.
4. Connect the fan cable to the connector on the main board.

Next steps

1. Install the [front trim](#).
2. Install the [keypad board](#).
3. Install the [middle frame](#).
4. Install the [main chassis](#).
5. Install the [joystick board](#).
6. Install the [USB board](#).
7. Install the [backlight module](#).
8. Install the [back cover](#).
9. Install the [stand](#).
10. Follow the procedure in [After working inside your monitor](#).

Power board

Removing the power board

Prerequisites

1. Follow the procedure in [Before working inside your monitor](#).
2. Remove the [stand](#).
3. Remove the [back cover](#).
4. Remove the [backlight module](#).
5. Remove the [USB board](#).
6. Remove the [joystick board](#).
7. Remove the [main chassis](#).
8. Remove the [middle frame](#).
9. Remove the [keypad board](#).
10. Remove the [front trim](#).
11. Remove the [main board](#).

Steps

1. Remove the four screws (M3x6) that secure the Mylar sheet to the power board.
2. Remove the Mylar sheet from the power board.
3. Disconnect the AC switch cable from the connector on the main board.
4. Remove the power board from the main chassis.
5. Remove the screw (M4x8) that secures the grounding wire to the main chassis.
6. Remove the AC switch module from the main chassis.

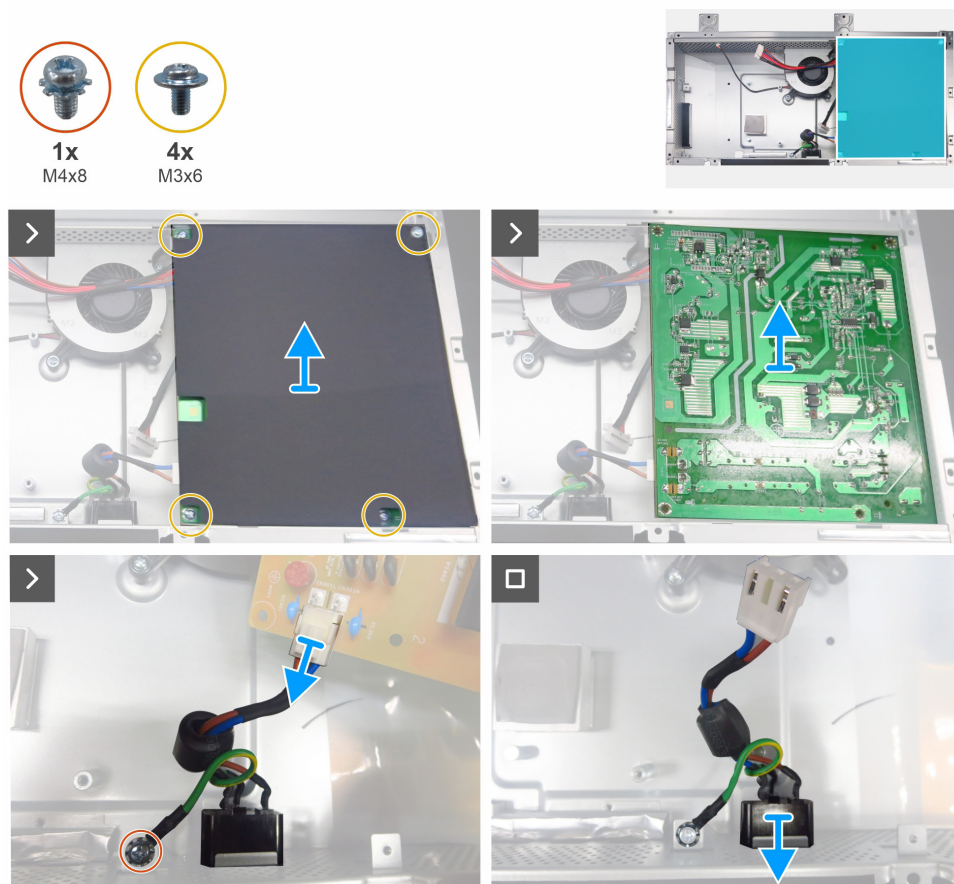


Figure 21. Removing the power board

Installing the power board

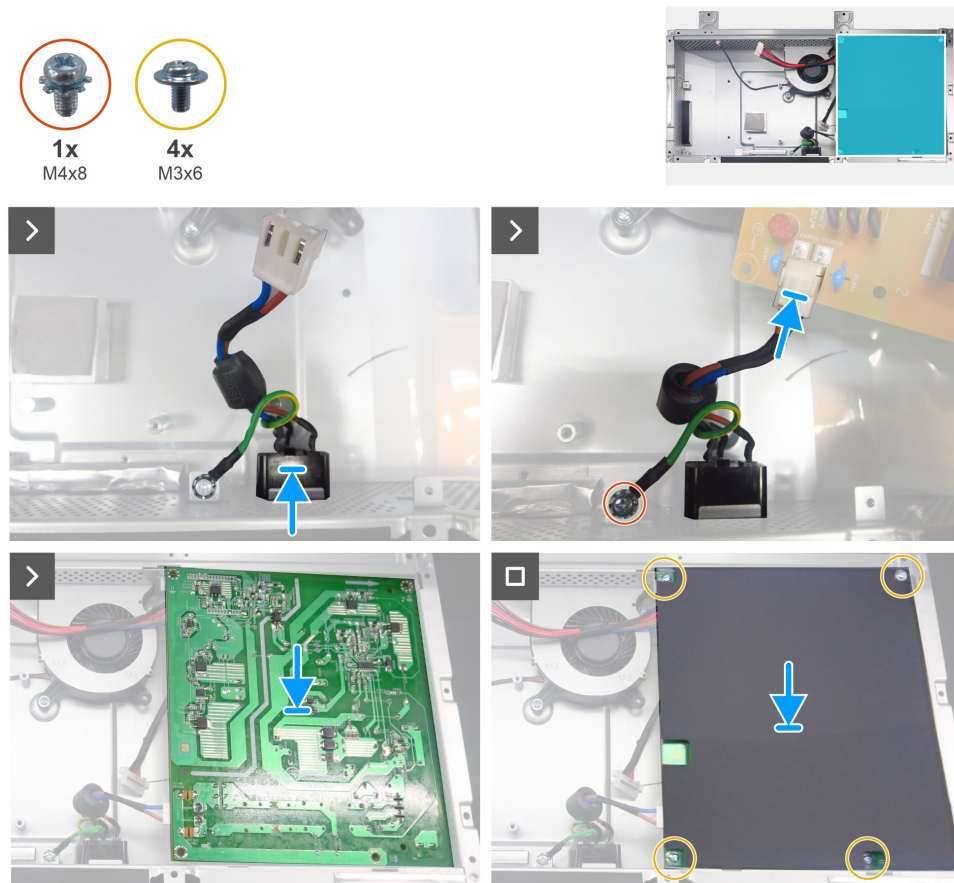


Figure 22. Installing the power board

Steps

1. Replace the AC switch module to the main chassis.
2. Replace the screw (M4x8) that secures the grounding wire to the main chassis.
3. Connect the AC switch cable to the connector on the power board
4. Align the screw holes on power board with the screw holes on the main chassis and place it down.
5. Insert the Mylar sheet to the slots on the main chassis.
6. Replace four screws (M3x6) that secure the power board to the main chassis.

Next steps

1. Install the [main board](#).
2. Install the [front trim](#).
3. Install the [keypad board](#).
4. Install the [middle frame](#).
5. Install the [main chassis](#).
6. Install the [joystick board](#).
7. Install the [USB board](#).
8. Install the [backlight module](#).
9. Install the [back cover](#).
10. Install the [stand](#).
11. Follow the procedure in [After working inside your monitor](#).

Fan

Removing the fan

Prerequisites

1. Follow the procedure in [Before working inside your monitor](#).
2. Remove the [stand](#).
3. Remove the [back cover](#).
4. Remove the [backlight module](#).
5. Remove the [USB board](#).
6. Remove the [joystick board](#).
7. Remove the [main chassis](#).
8. Remove the [middle frame](#).
9. Remove the [keypad board](#).
10. Remove the [front trim](#).
11. Remove the [main board](#).
12. Remove the [power board](#).

Steps

1. Remove the two screws (M3x6) that secure the fan to the chassis.
2. Remove the fan from the chassis.

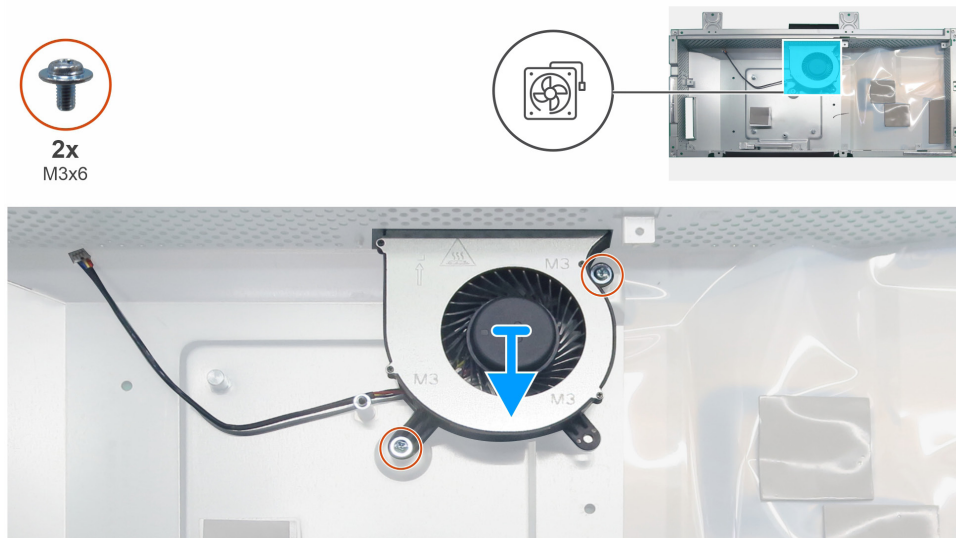


Figure 23. Removing the fan

Installing the fan

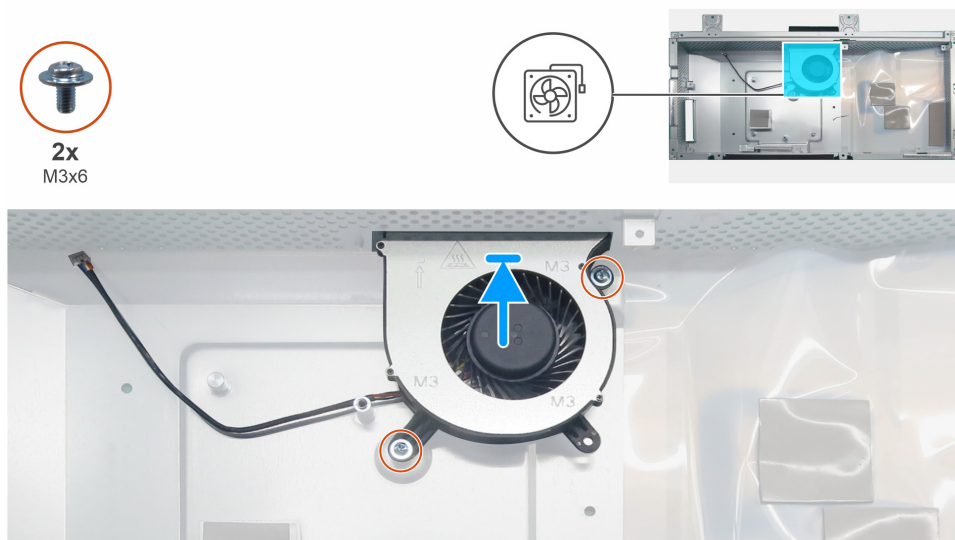


Figure 24. Installing the fan

Steps

1. Align the screw holes on the fan with the screw holes on the chassis and place it down.
2. Replace the two screws (M3x6) that secure the fan to the chassis.

Next steps

1. Install the [power board](#).
2. Install the [main board](#).
3. Install the [front trim](#).
4. Install the [keypad board](#).
5. Install the [middle frame](#).
6. Install the [main chassis](#).
7. Install the [joystick board](#).
8. Install the [USB board](#).
9. Install the [backlight module](#).
10. Install the [back cover](#).
11. Install the [stand](#).
12. Follow the procedure in [After working inside your monitor](#).

Contacting Dell

To contact Dell for sales, technical support, or customer service issues, see www.dell.com/contactdell.

- ① **NOTE:** Availability varies by country and product, and some services may not be available in your country.
- ① **NOTE:** If you do not have an active Internet connection, you can find contact information about your purchase invoice, packing slip, bill, or Dell product catalog.