

PERFORMANCE

**Processor**  
Intel® Core™ Ultra 9 285H, 16C (6P + 8E + 2LPE) / 16T, Max Turbo up to 5.4GHz, 24MB

**AI PC Category**<sup>[1]</sup>  
Lenovo® AI PC

**NPU**  
Integrated Intel® AI Boost, up to 13 TOPS

**Graphics**  
Integrated Intel® Arc™ 140T GPU

**Chipset**  
Intel® SoC Platform

**Memory**  
32GB Soldered LPDDR5x-7467

**Memory Slots**  
Memory soldered to systemboard, no slots, dual-channel

**Max Memory**<sup>[2]</sup>

- 16GB soldered memory, not upgradable
- 32GB soldered memory, not upgradable

**Storage**  
1TB SSD M.2 2280 PCIe® 4.0x4 NVMe®

**Max Storage Support**<sup>[3]</sup>  
One drive, up to 1TB M.2 SSD

**Card Reader**  
None

**Optical**  
None

**Audio Chip**  
High Definition (HD) Audio

**Speakers**  
3Wx2 tweeter + 5Wx2 woofer, JBL®

**Camera**  
5.0MP + IR

**Microphone**  
Dual Microphone

**Power Supply**  
170W 89% Adapter

**DESIGN**

**Display**<sup>[4]</sup>  
27" QHD (2560x1440) IPS 400nits, 99% sRGB, 4 side like, 120Hz, Touch

**Touchscreen**  
OGM, 10-point Multi-touch

**Keyboard**  
Euterpe Wireless Keyboard, Grey, German

**Mouse**  
Wireless Euterpe Mouse, Grey

**Expansion Slots**  
Two M.2 slots (one for WLAN, one for SSD)

**Case Color**  
Luna Grey

**System Lighting**  
Default

**Cooler**  
Default

**Stand**  
AIO Stand

**Wireless Charger**  
Wireless Charger

**Pen**  
Pen Not Supported

**Form Factor**  
AIO (27 inches)

**Dimensions (WxDxH)**<sup>[5]</sup>  
613.6 x 235 x 565.5 mm (24.15 x 9.25 x 22.26 inches)

**Weight**<sup>[6]</sup>  
Around 8.4 kg (18.51 lbs)

**CONNECTIVITY**

**WLAN + Bluetooth**<sup>[7]</sup>  
Wi-Fi® 7, 802.11be 2x2 + BT5.4

**WWAN**  
Non-WWAN

**Ethernet**  
Integrated 100/1000M

**Rear Ports**

- 1x USB-C® (USB 10Gbps / 3.2 Gen 2)
- 2x USB-A (USB 10Gbps / USB 3.2 Gen 2)
- 1x HDMI®-in 2.1
- 1x HDMI®-out 2.1 TMDS
- 1x Ethernet (RJ-45)
- 1x power connector

**Left Ports**

- 1x USB-C® (USB 10Gbps / USB 3.2 Gen 2)
- 1x USB-A (USB 10Gbps / USB 3.2 Gen 2)
- 1x headphone / microphone combo jack (3.5mm)

**SECURITY & PRIVACY**

**Security Chip**  
Firmware TPM 2.0 integrated in SoC

**SERVICE**

**Base Warranty**  
2-year, Courier or Carry-in

**Included Upgrade**  
2Y Premium Care with Onsite upgrade from 2Y Courier/Carry-in

**CERTIFICATIONS**

**Green Certifications**

- ENERGY STAR® 8.0
- ErP Lot 3/7
- REACH
- RoHS compliant

**Other Certifications**

- Eyesafe® Certified 2.0
- TÜV Rheinland® Flicker Free
- TÜV Rheinland® Low Blue Light (Hardware Solution)

**SOFTWARE**

**Operating System**  
Windows® 11 Pro, German

**Bundled Software**  
None

**ACCESSORIES**

**Bundled Accessories**  
None

**MODEL**

<b>TopSeller</b>	: No	<b>Announce Date</b>	: 2025-06-04
<b>EAN / UPC / JAN</b>	: 199271761038	<b>End of Support</b>	: 2031-03-17



Product image is a sample, it may not match the real color of this model

Note:  
<sup>[1]</sup> AI PCs have a NPU capable of 10+ TOPs to run the Copilot.....  
· Lenovo reserves the right to change specifications without notice.  
To see more note information, please access the [web page](#).

## Premium Care - Advanced Support from Real People. Real Fast.



### REAL PERSON

Choose how you want to reach us - through the phone, chat or email - our expert technicians will take care of you.



### REAL FAST

Highly trained technicians will provide you real-time solutions, whatever the issue, on your first contact. If needed, our team will schedule an onsite visit for the next business day.



### HASSLE FREE

'Getting started' and 'how-to' assistance for hardware and software. Easy solutions that are simple to reach - that's how Premium Care delivers you the ideal support experience.



### PC HEALTH CHECK

Free annual PC Health Check that allows our experts to spot issues before you do so they can resolve them quickly and help you avoid PC problems.

## Accidental Damage Protection - Protection of your PC from the unexpected.

Experience shows that a significant portion of devices may be damaged (and not covered under warranty) in the first three years. Lenovo's Accidental Damage Protection service covers accidents beyond the system warranty such as drops, spills, bumps and even electrical surges. Make sure your new device has maximum protection, avoid unplanned costs and get peace of mind.

## Base Warranty – Included with the systems you purchase, default 1- or 3-year coverage window.

## Warranty Extensions & Upgrades – Service and protection that's right for your circumstances.

- Pick Up & Return Courier
- Onsite Support
- Technician Installed Customer
- Replaceable Unit Service
- International Warranty Upgrade

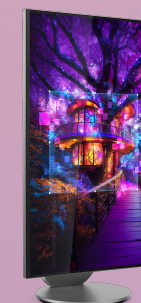
Lenovo may not offer the products, services or features discussed in this document in all regions. Lenovo may withdraw an offering at any time. Consult your local representative for information on offerings available in your area. Lenovo reserves the right to change specifications or other product information without notice. Lenovo is not responsible for photographic or typographical errors. Lenovo provides this publication "as is" without warranty of any kind, either express or implied, including the implied warranties of merchantability or fitness for a particular purpose.



intel



intel



intel

**Lenovo**

**PSREF**  
Product Specifications  
Reference