

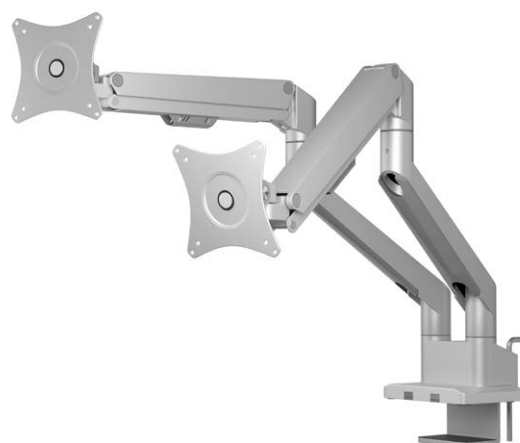


ICY BOX IB-MS524-T

Dual Monitor Stand

Key features

- Space-saving – for a more flexible and productive workplace
- Sophisticated design – slim and ergonomic construction
- Smart Torque Adjust™ – can be adjusted to different monitor weights
- Comfortable height adjustment – thanks to gas pressure spring support
- Easy Cable™ Management – for organised and clear cable management
- Metal base with clamping device or table grommet guarantees high stability
- Can be mounted from the top of the desk surface
- Removable VESA® plate – enables easy installation
- Supports 75x75 and 100x100 VESA® standards
- Easy assembly and compact packaging – optimised for e-commerce



Packing content

IB-MS524-T, allen wrench, screw set, quick installation guide

Technical data

| | | | |
|---|--|------------------------------------|---|
| Model | IB-MS524-T | Swivel (Hinge) - VESA® | +90° to -90° |
| Article no. | 61085 | Tilt (Hinge) - VESA® | +90° to -45° |
| EAN code | 4250078174189 | Rotate (Pivot) - VESA® | +180° to -180° |
| Colour | Silver/grey | Base - Rotate (Pivot) | +90° to -90° |
| Material | Aluminium, steel, plastic | Tilt (arm) | +45° to -45° |
| Maximum size of monitor (diagonal) | 32" (81 cm) | Swivel (Hinge) | +180° to -180° |
| Number of monitors | 2 | Max arm extend | 550 mm |
| Max. weight of monitor | 1 - 9 kg | Max arm height | 495 mm |
| Mounting | Full metall base with clamping device or table grommet | Arm height adjustment range | 280 mm |
| VESA® compatible | 75x75 / 100x100 mm | Table thickness | 10 - 50 mm (clamping device), 10 - 45 mm (table grommet) |

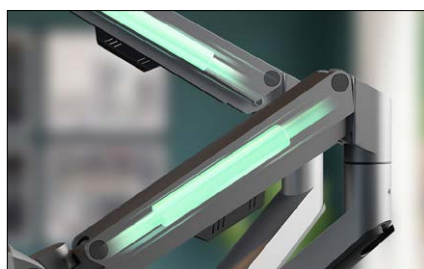


ICY BOX **IB-MS524-T** Dual Monitor Stand



Firm hold

The monitor holder can either be attached to the edge of a table using a clamp base or alternatively directly to the table top using a table grommet. In both cases, it can be conveniently mounted from above the table-top and the necessary accessories are included in the scope of delivery.



Advanced Gas Spring Technology

Customize your viewing comfort to fit your preferences, designed with a high-quality gas spring for smooth height adjustments. This feature lets you position your monitor at the desired height, creating a workspace that aligns with your unique needs for comfort and productivity.



Snap-and-Lock

The detachable VESA® adapter, crafted from premium steel, offers a practical solution for monitor mounting. After a simple unlocking, it can be lifted out, allowing you to attach it to your monitor first. Once done, it hooks smoothly into the support arm, ensuring a secure and stable connection.

Logistical data

Packing unit: 4 pcs. / carton
Total weight: 20.80 kg
Gross weight (with packing): 4.98 kg
Net weight: 4.15 kg

Dimension/carton: 450x415x320 mm
Dimension (with packing): 200x435x150 mm
Dimension of article: 195x435x145 mm
Country of origin: China