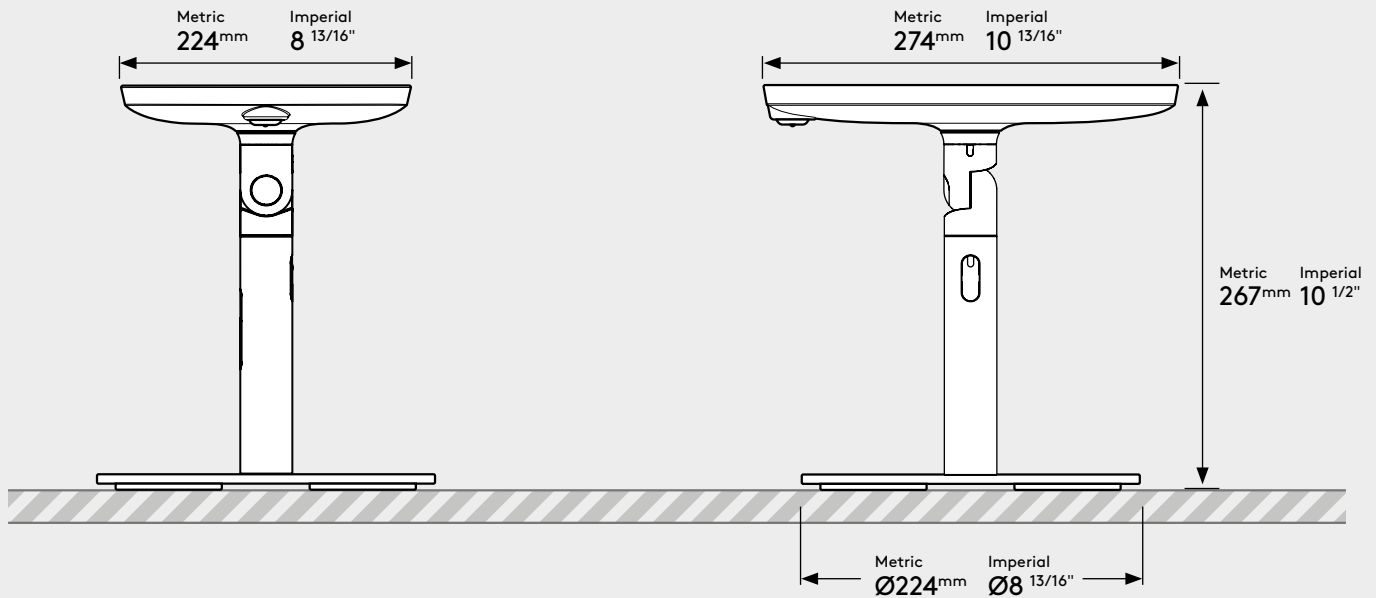


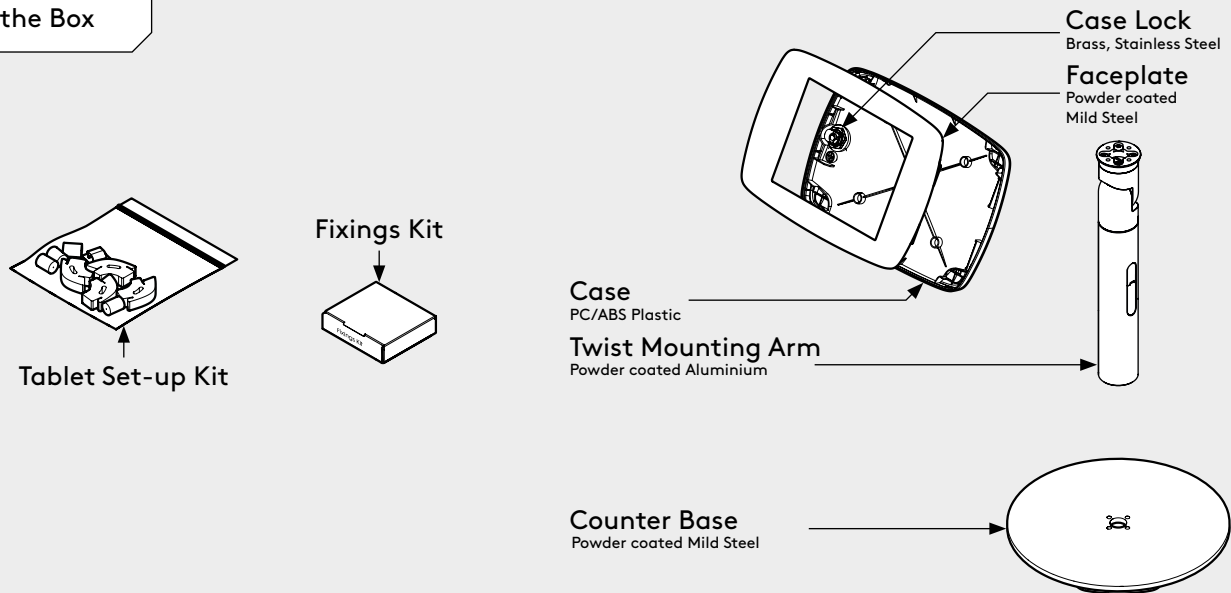
# PRODUCT DATA SHEET - ORIGINAL TWIST + COUNTER BASE (MINI CASE) **bouncepad®**

**Case:** Mini    **Arm:** Twist    **Mounting:** Counter Base    **Packaged weight:** 3.91kg    **Colour:** White  
 Black

## Dimensions



## Parts in the Box

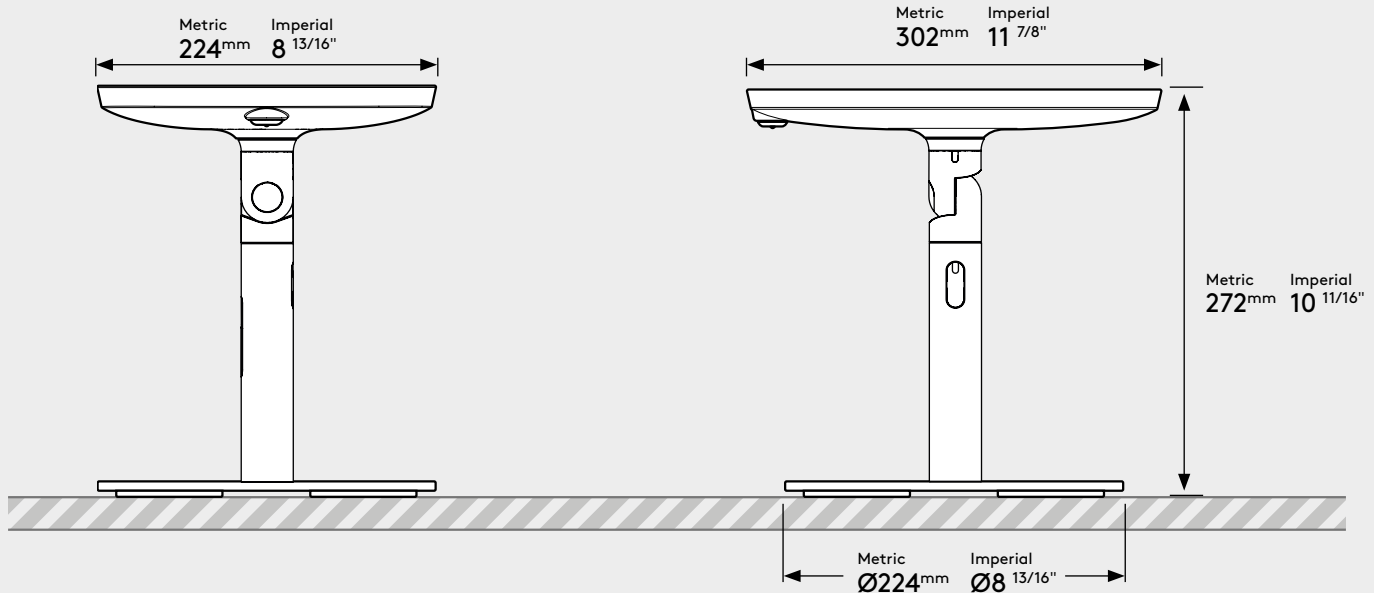


# PRODUCT DATA SHEET - ORIGINAL TWIST + COUNTER BASE (MIDI CASE)

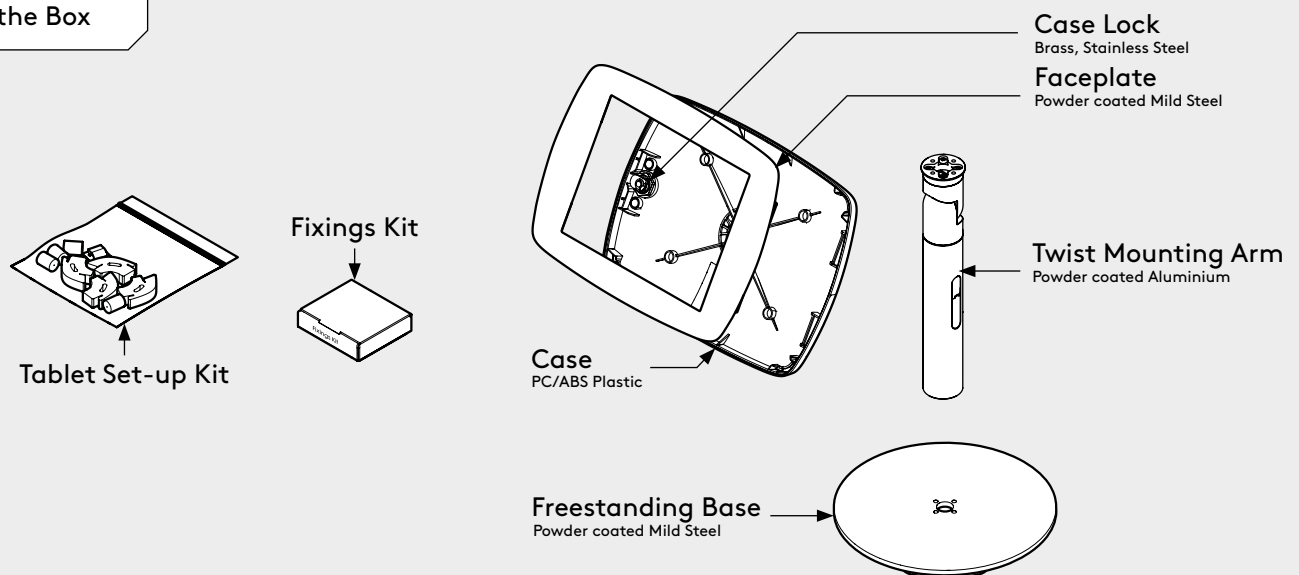
**bouncepad®**

**Case:** Midi    **Arm:** Twist    **Mounting:** Counter Base    **Packaged weight:** 4.23kg    **Colour:** White  
Black

## Dimensions



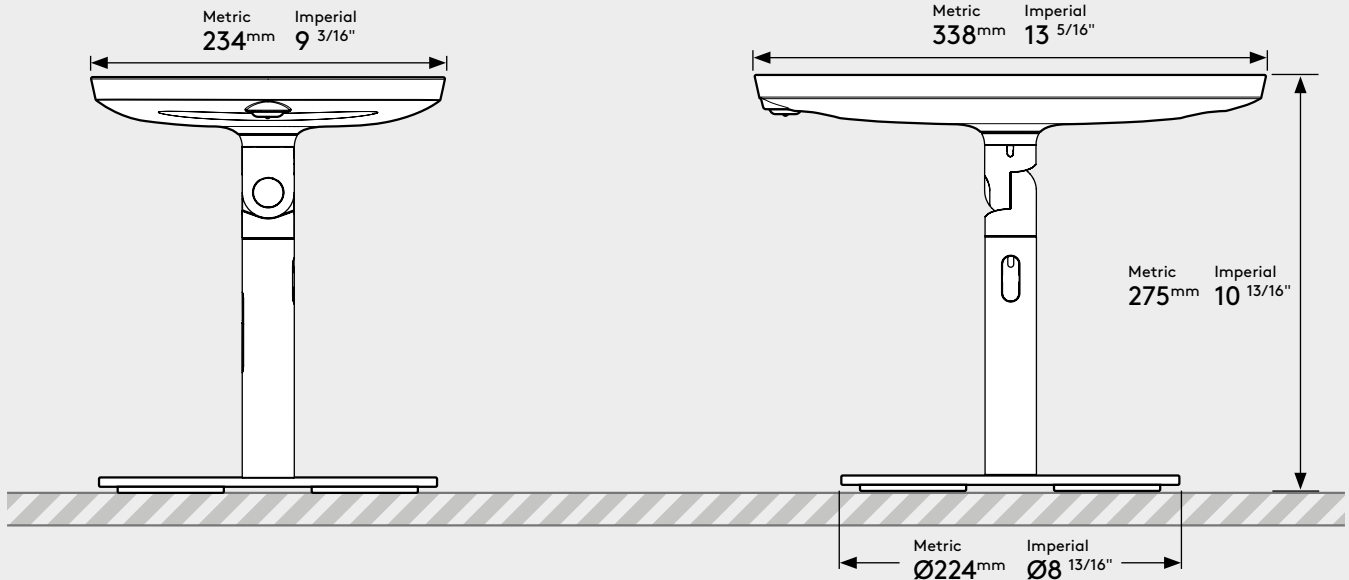
## Parts in the Box



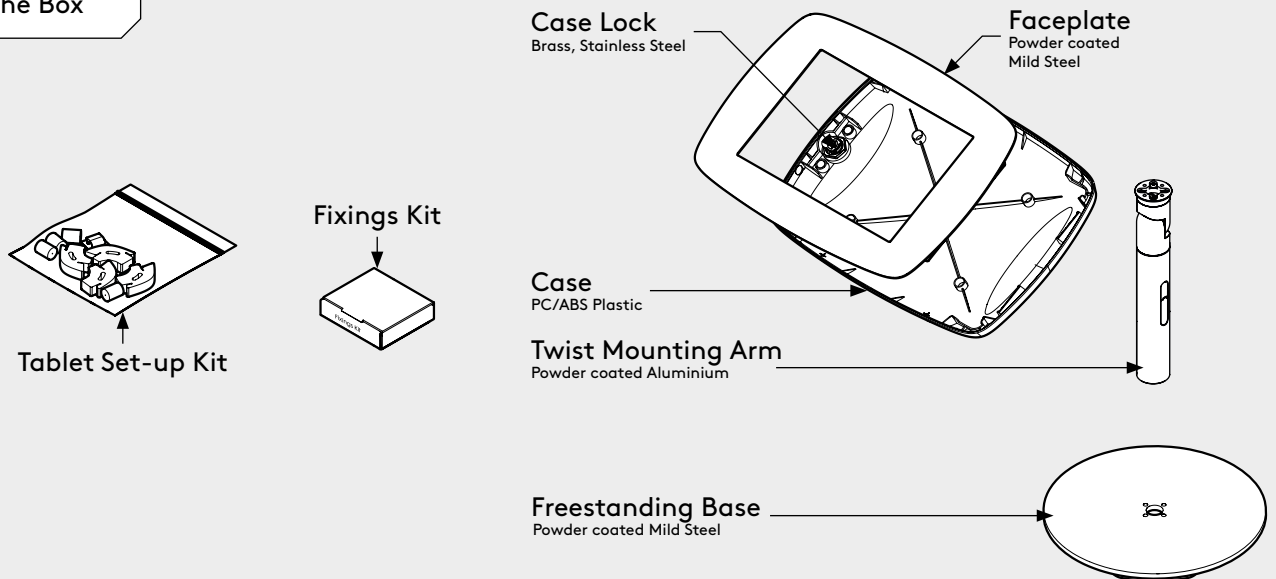
# PRODUCT DATA SHEET - ORIGINAL TWIST + COUNTER BASE (MAXI CASE) **bouncepad®**

**Case:** Maxi    **Arm:** Twist    **Mounting:** Counter Base    **Packaged weight:** 4.37kg    **Colour:** White  
Black

## Dimensions



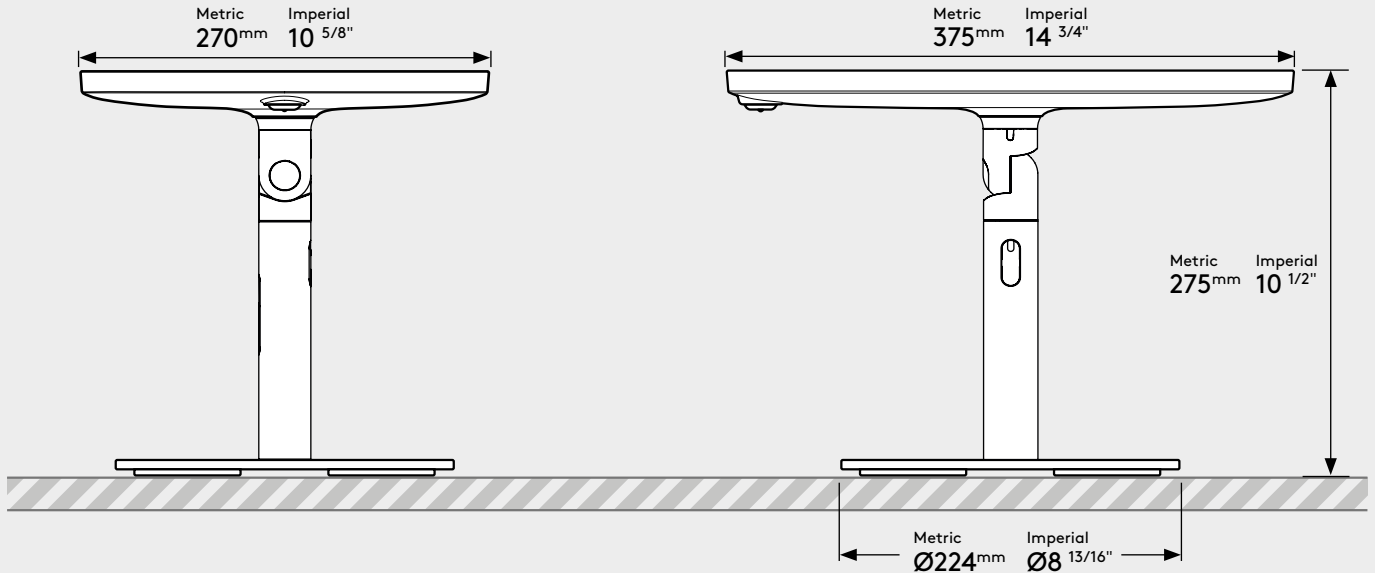
## Parts in the Box



# PRODUCT DATA SHEET - ORIGINAL TWIST + COUNTER BASE (MEGA CASE) **bouncepad®**

**Case:** Mega    **Arm:** Twist    **Mounting:** Counter Base    **Packaged weight:** 4.46kg    **Colour:** White  
Black

## Dimensions



## Parts in the Box

