

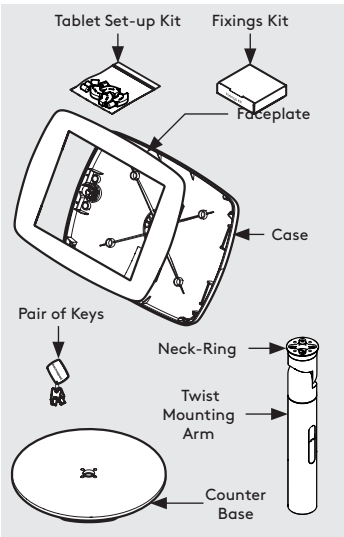
Original Twist + Counter Base
Assembly Instructions

Tools Required:

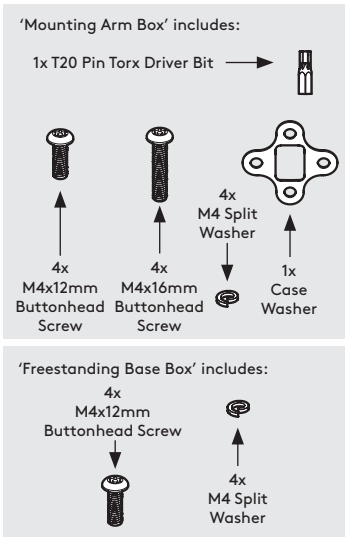
- Socket Driver

Sheet Code: BP-IM-103_REV0
Release Date: 01/02/2025

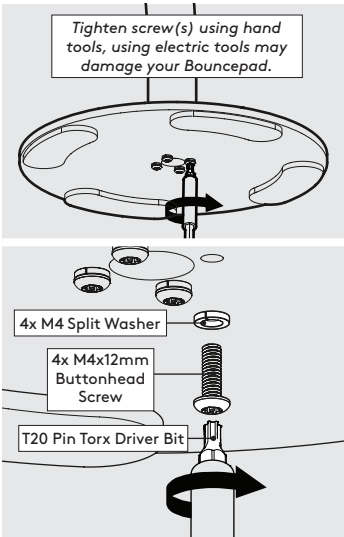
Copyright 2025 Spotspot Ltd. (T/A Bouncepad) all rights reserved. Confidential, no part of this publication may be reproduced or transmitted in any form without the written permission of the copyright holder.



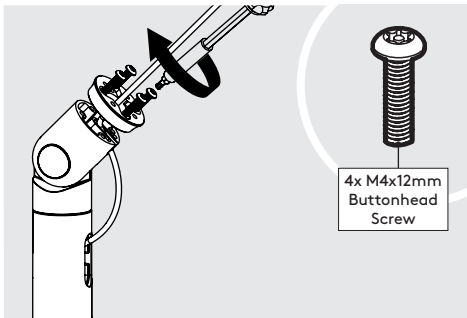
In the Box



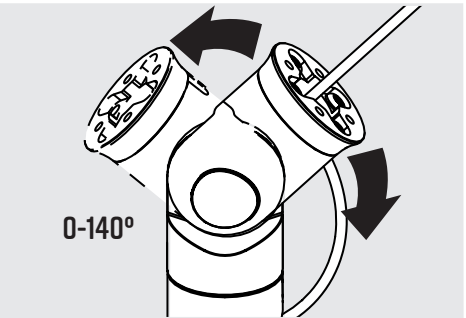
Fixings List
* Due to the modular nature of our product range you may receive additional fixings in the fixings kit



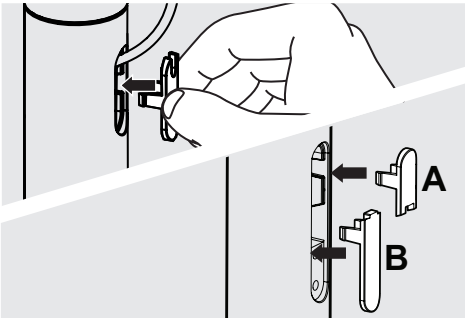
1 Locate & secure the Twist to the Counter Base.



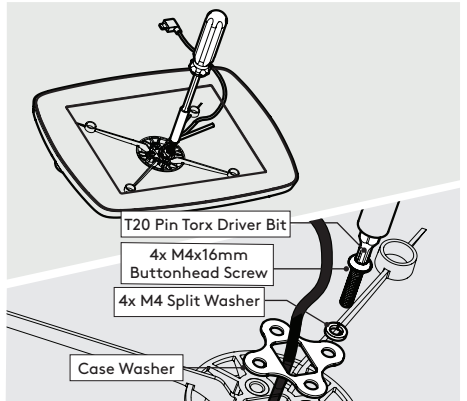
2 Feed Cable through Neck-Ring & cable channel. Use 4 x M4x12mm Buttonhead Screws to attach Neck-Ring.



3 Feed Cable through channel. Test rotate & tilt to ensure enough cable slack through the full range of tilt.



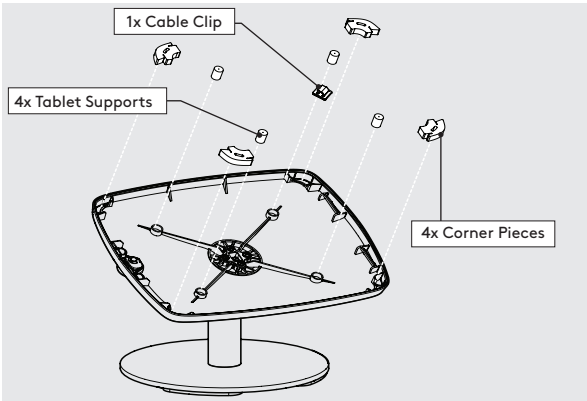
4 Fit cable all Cable Covers. Fit cover 'B' before cover 'A'.



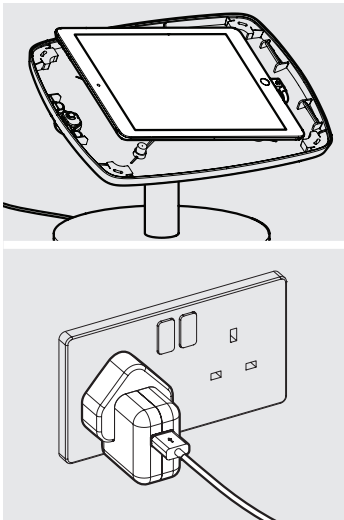
5 Locate and attach the Case to the Twist as shown.



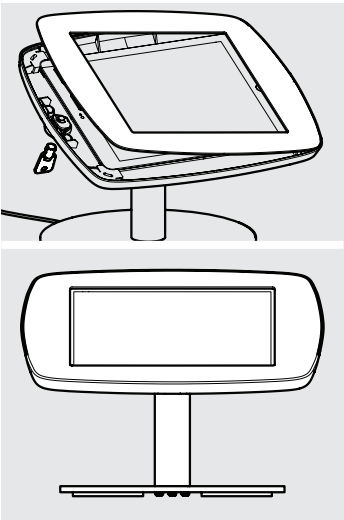
6 Unlock & remove the Faceplate from the Case.



7 Install the Tablet Setup Kit. Each kit is specific per Tablet & Case.



8 Place the Tablet into the Case & connect to power.



9 Locate & lock the Faceplate onto the Case.



10 Installation is now complete.