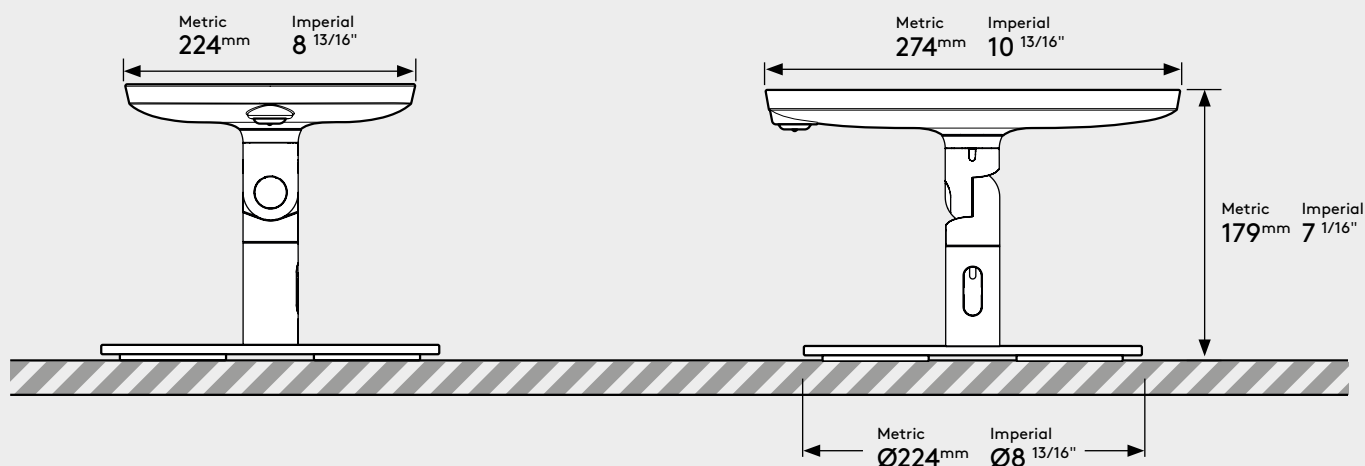


PRODUCT DATA SHEET - ORIGINAL TWIST-MINI + COUNTER BASE (MINI)

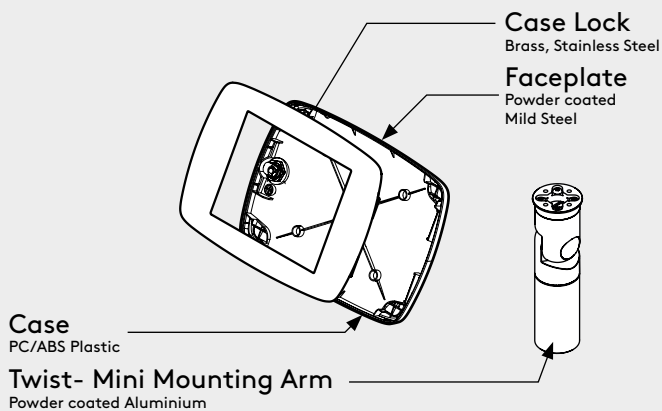
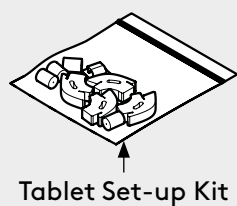
bouncepad®

Case: Mini **Arm:** Twist-Mini **Mounting:** Counter Base **Packaged weight:** 3.77kg **Colour:** White
Black

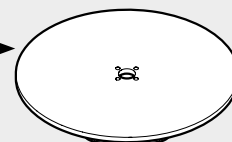
Dimensions



Parts in the Box



Counter Base
Powder coated Mild Steel

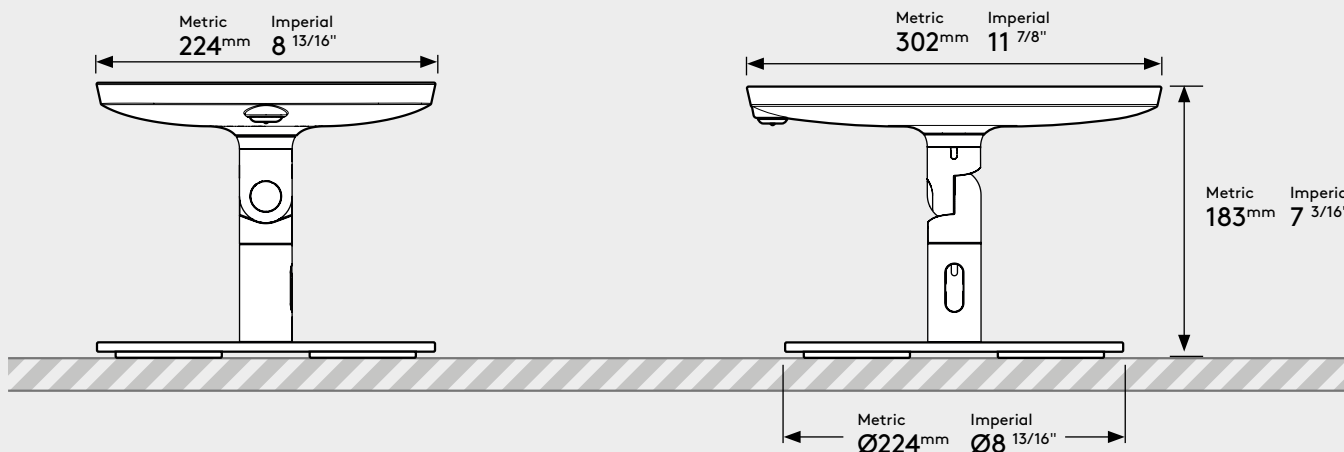


PRODUCT DATA SHEET - ORIGINAL TWIST-MINI + COUNTER BASE (MIDI)

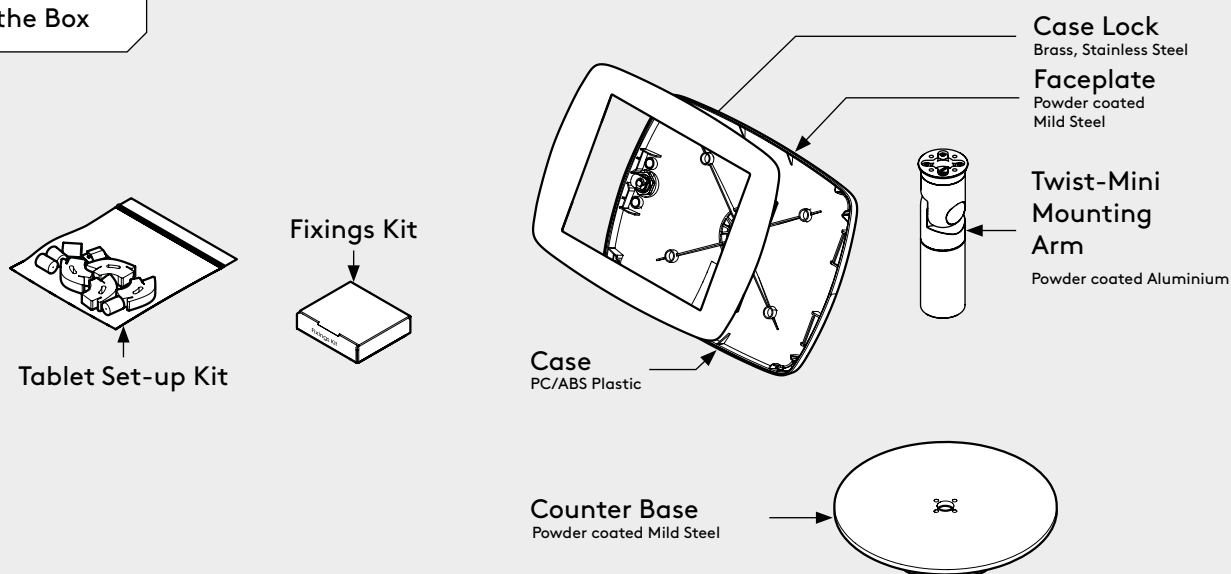
bouncepad®

Case: Midi **Arm:** Twist-Mini **Mounting:** Counter Base **Packaged weight:** 4.09kg **Colour:** White
Black

Dimensions



Parts in the Box

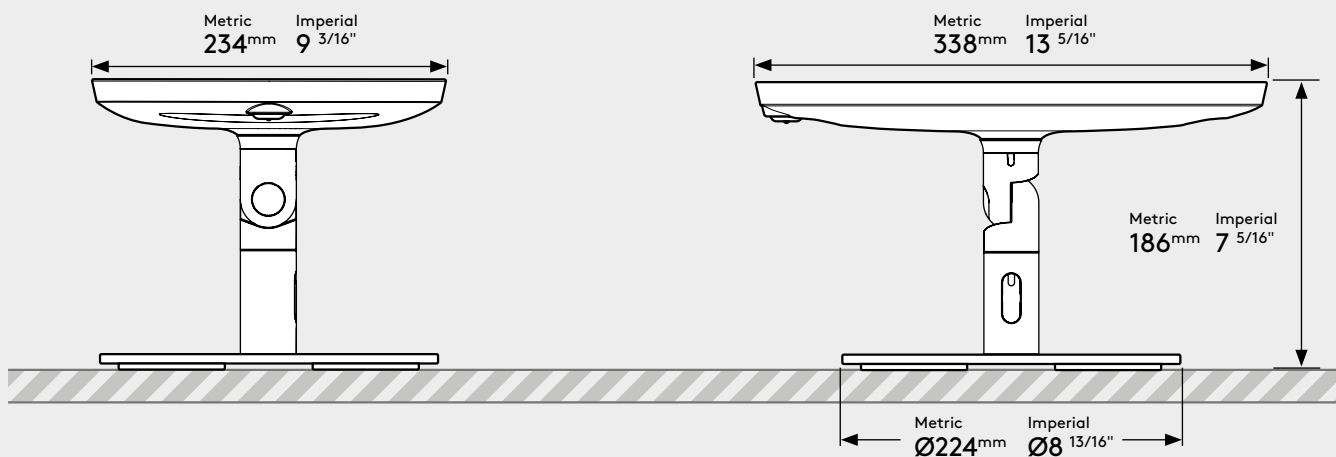


PRODUCT DATA SHEET - ORIGINAL TWIST-MINI + COUNTER BASE (MAXI)

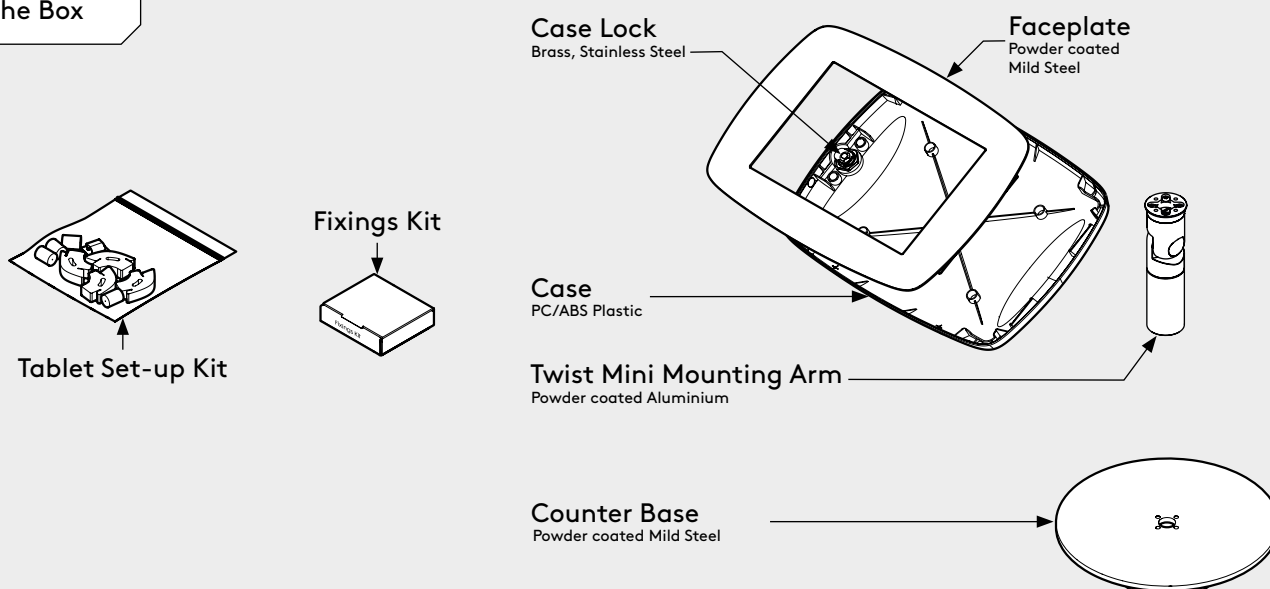
bouncepad®

Case: Maxi **Arm:** Twist-Mini **Mounting:** Counter Base **Packaged weight:** 4.23kg **Colour:** White
Black

Dimensions



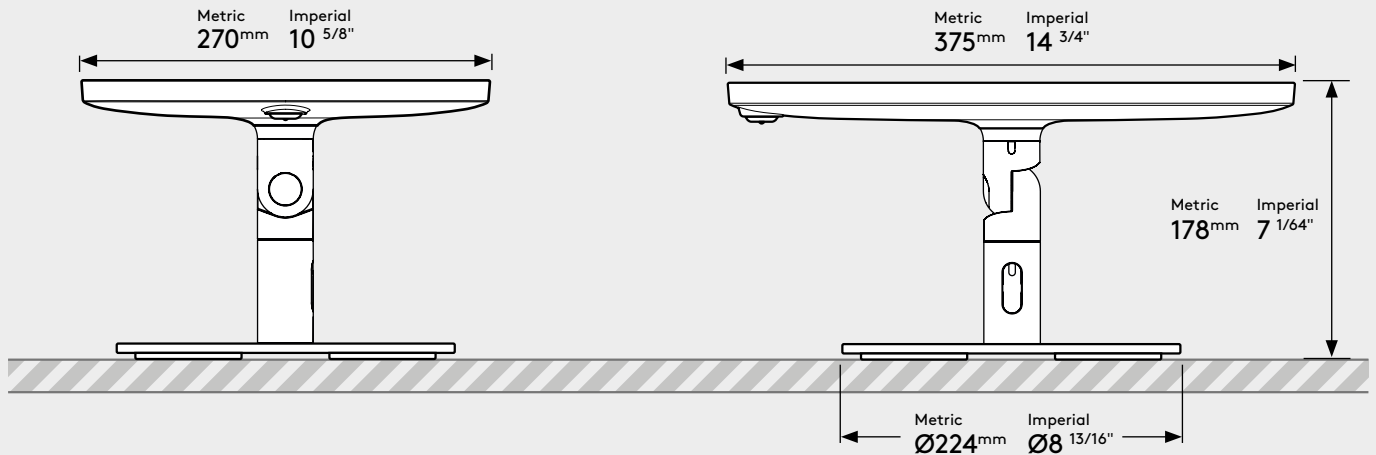
Parts in the Box



PRODUCT DATA SHEET - ORIGINAL TWIST-MINI + COUNTER BASE (MEGA) **bouncepad®**

Case: Mega **Arm:** Twist-Mini **Mounting:** Counter Base **Packaged weight:** 4.32kg **Colour:** White
Black

Dimensions



Parts in the Box

