

Original Twist-Mini

Assembly Instructions

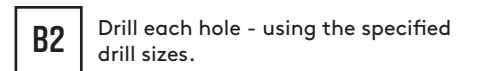
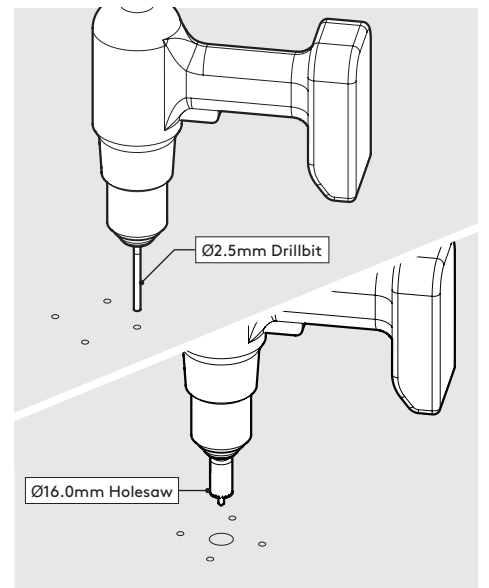
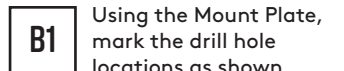
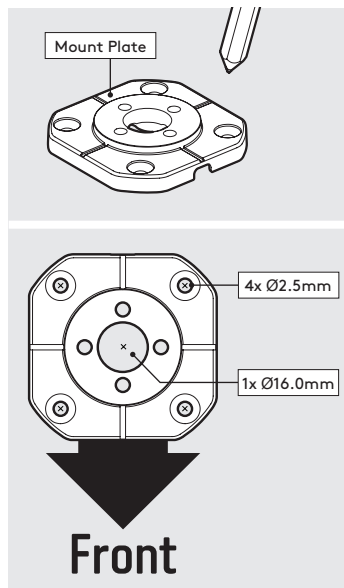
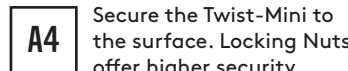
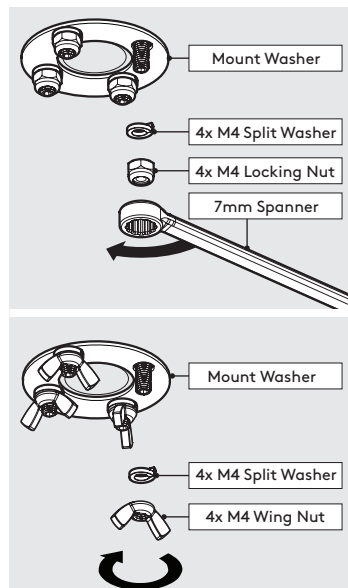
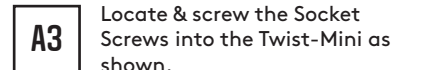
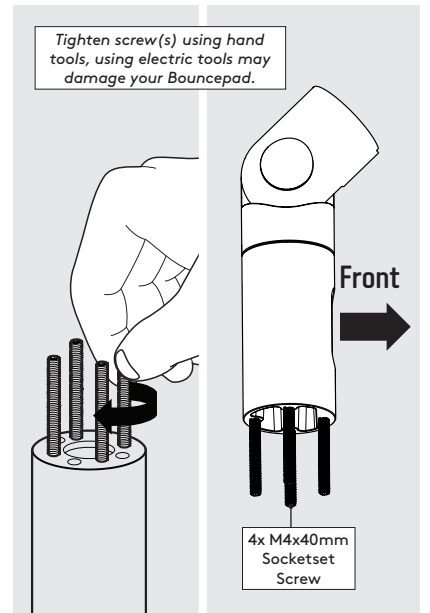
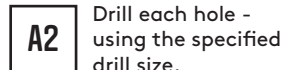
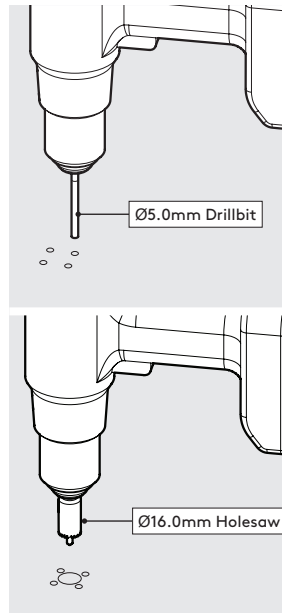
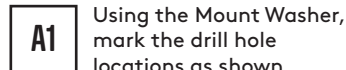
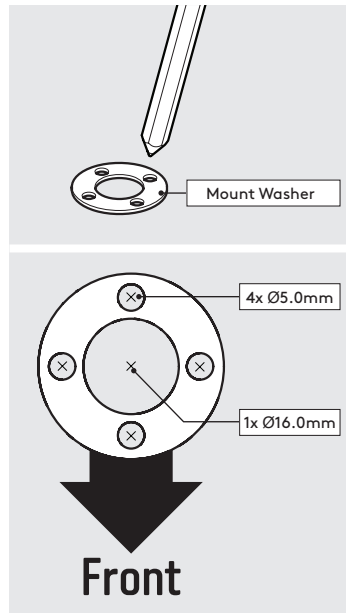
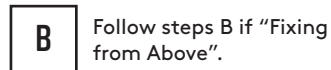
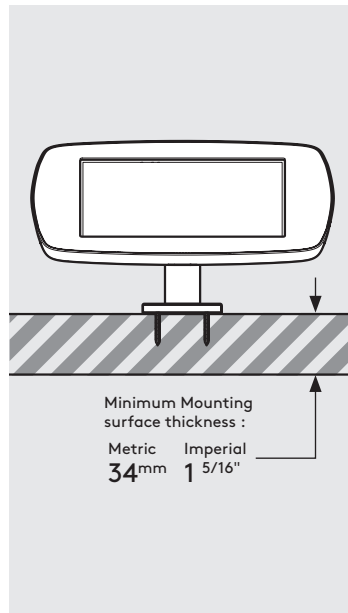
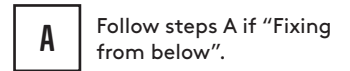
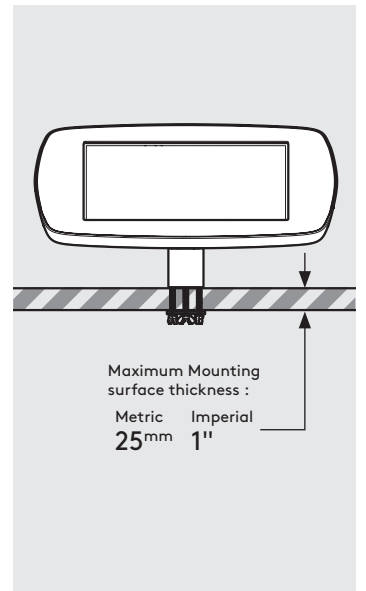
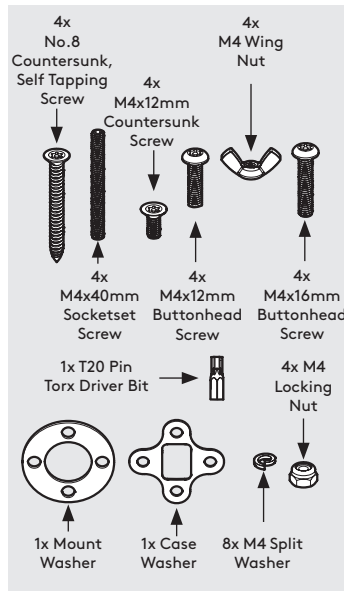
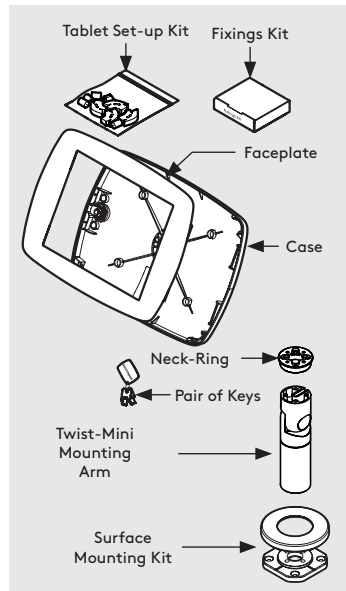
Tools Required:

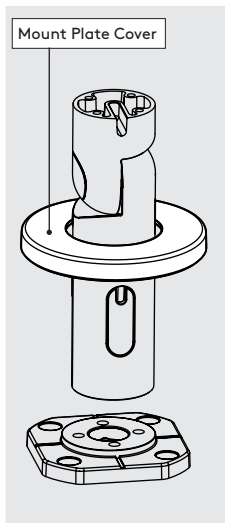
- Pencil
- Electric Drill
- 7mm Spanner *or adjustable spanner
- 5.0mm Drillbit *if fixing from below
- 2.5mm Drillbit *if fixing from above
- 16mm Holesaw *if routing the tablet cable through your mounting surface
- Socket Driver

Sheet Code: BP-IM-097_REV0

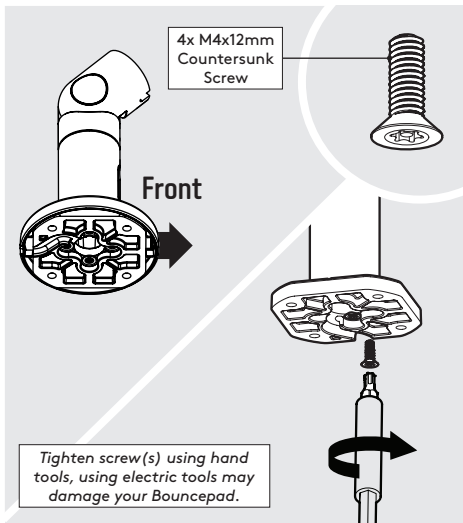
Release Date: 01/02/2025

Copyright 2025 Spotspot Ltd. (T/A Bouncepad) all rights reserved. Confidential, no part of this publication may be reproduced or transmitted in any form without the written permission of the copyright holder.

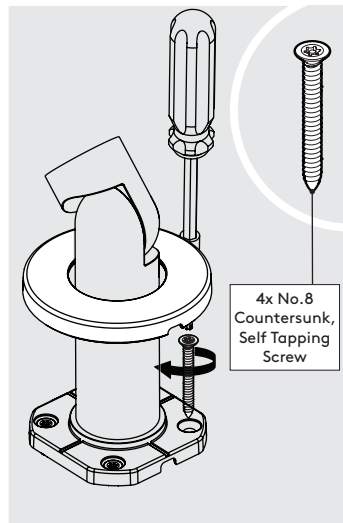




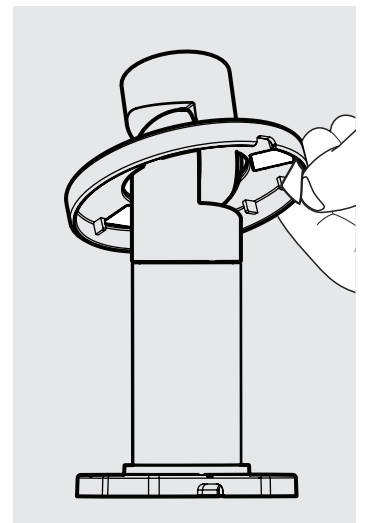
B3 Locate the Cover onto the Twist-Mini.



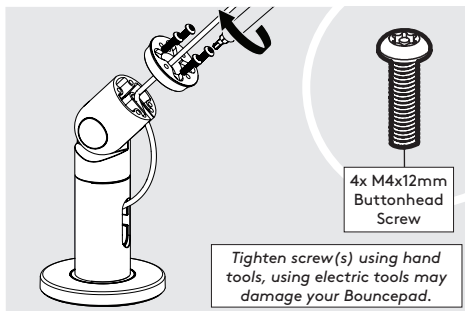
B4 Join the Twist-Mini & Mount Plate in the orientation shown.



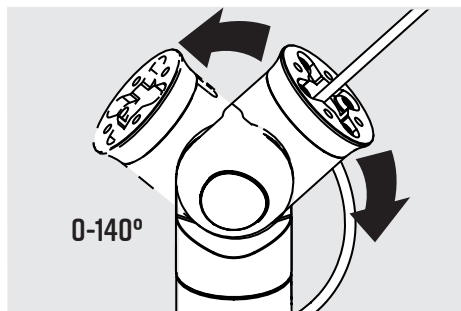
B5 Secure the Twist-Mini to the surface with the 4x Countersunk Fixings



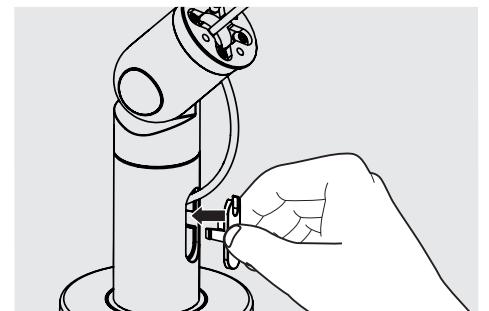
B6 Adhere the Mount Cover onto the Mount Plate with the adhesive tabs.



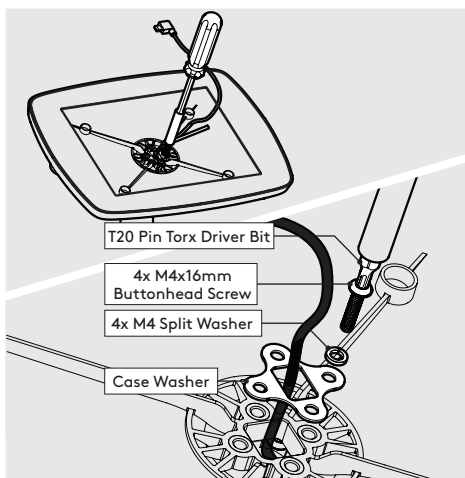
1 Feed Cable through Neck-Ring & cable channel. Use 4x M4x12mm Buttonhead Screws to attach Neck-Ring.



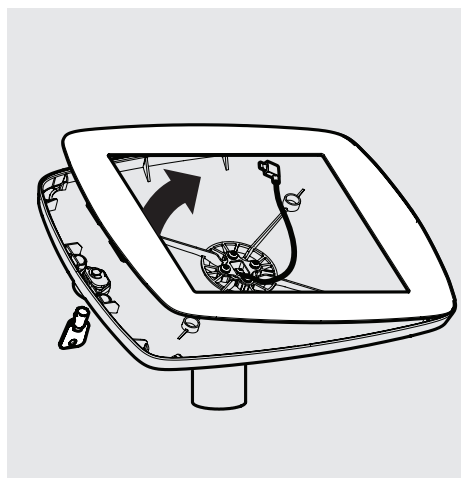
2 Feed Cable through channel. Test rotate & tilt to ensure enough cable slack through the full range of tilt.



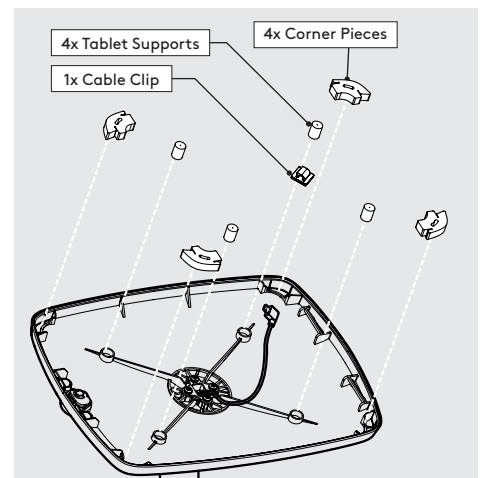
3 Fit Cable Cover as shown.



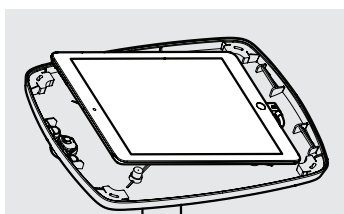
4 Locate & attach the Case to the Twist-Mini as shown.



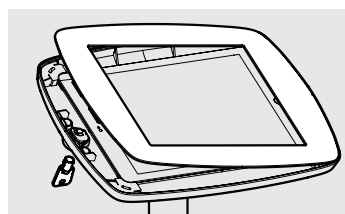
5 Unlock & remove the Faceplate from the Case.



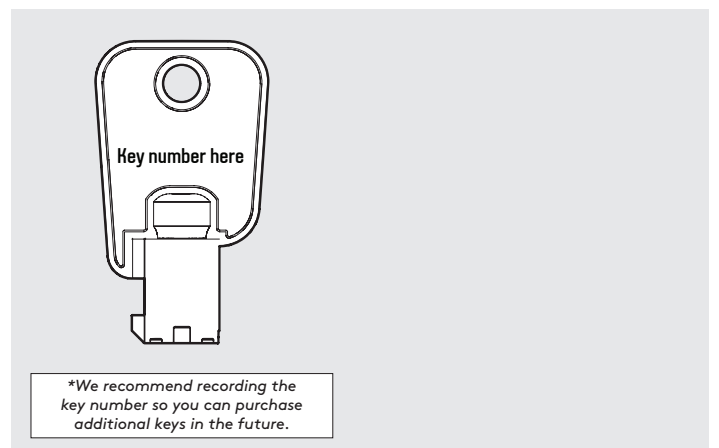
6 Install the Tablet Setup Kit. Each kit is specific per Tablet & Case.



7 Place the Tablet into the Case & connect to power.



8 Locate & lock the Faceplate onto the Case.



9 Installation is now complete.

*We recommend recording the key number so you can purchase additional keys in the future.