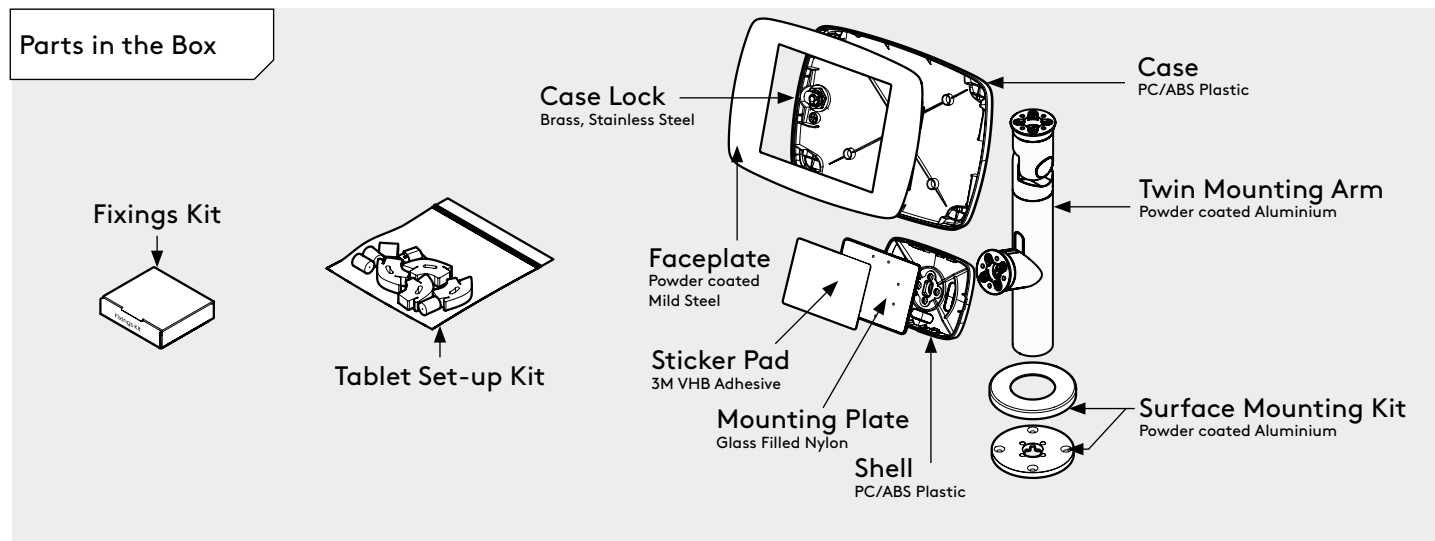
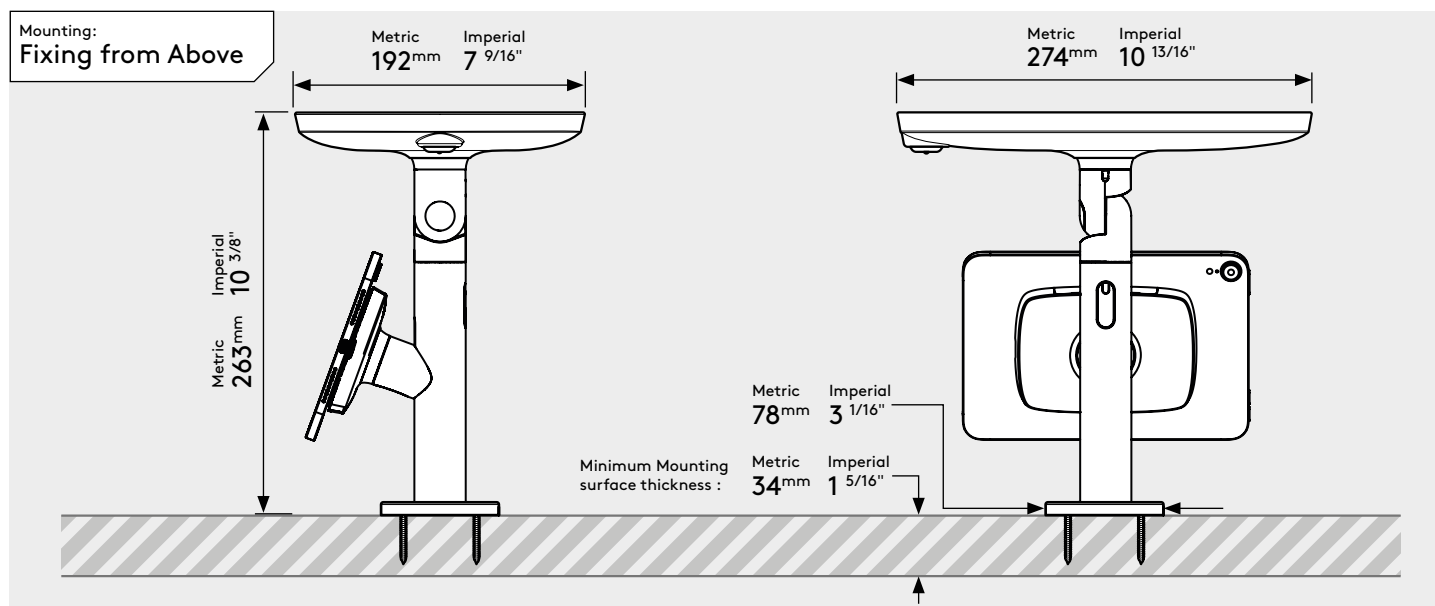
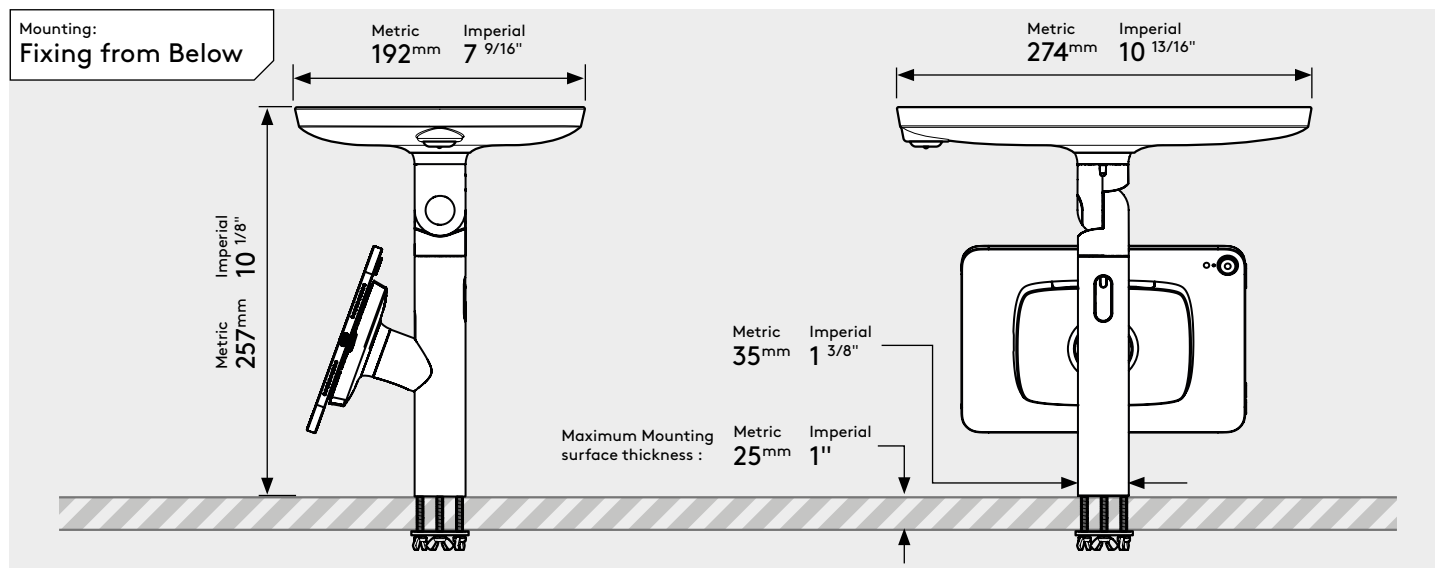


# PRODUCT DATA SHEET - ORIGINAL TWIN (MINI CASE)

**bouncepad®**

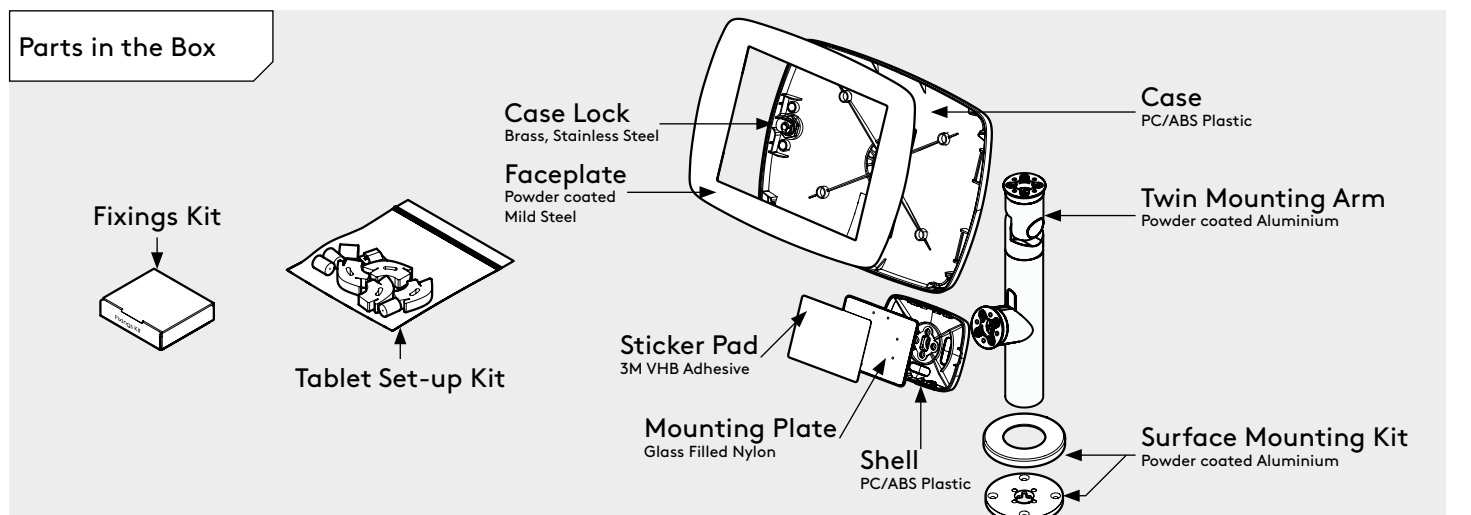
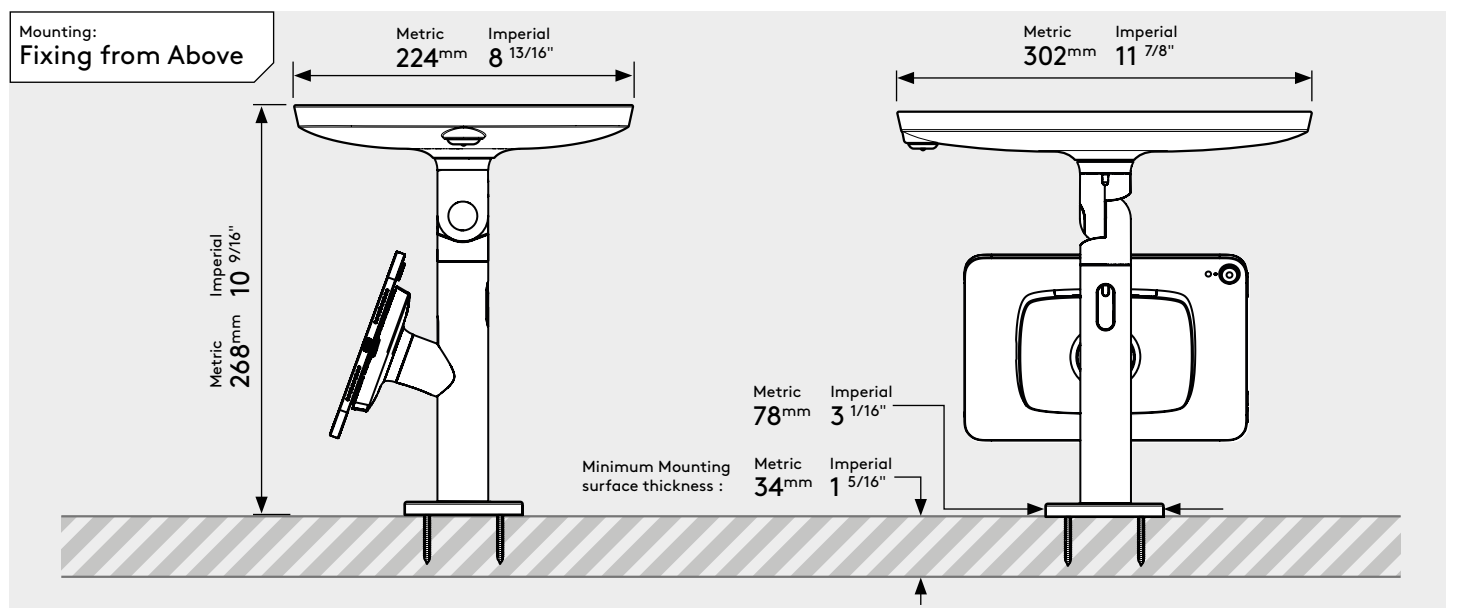
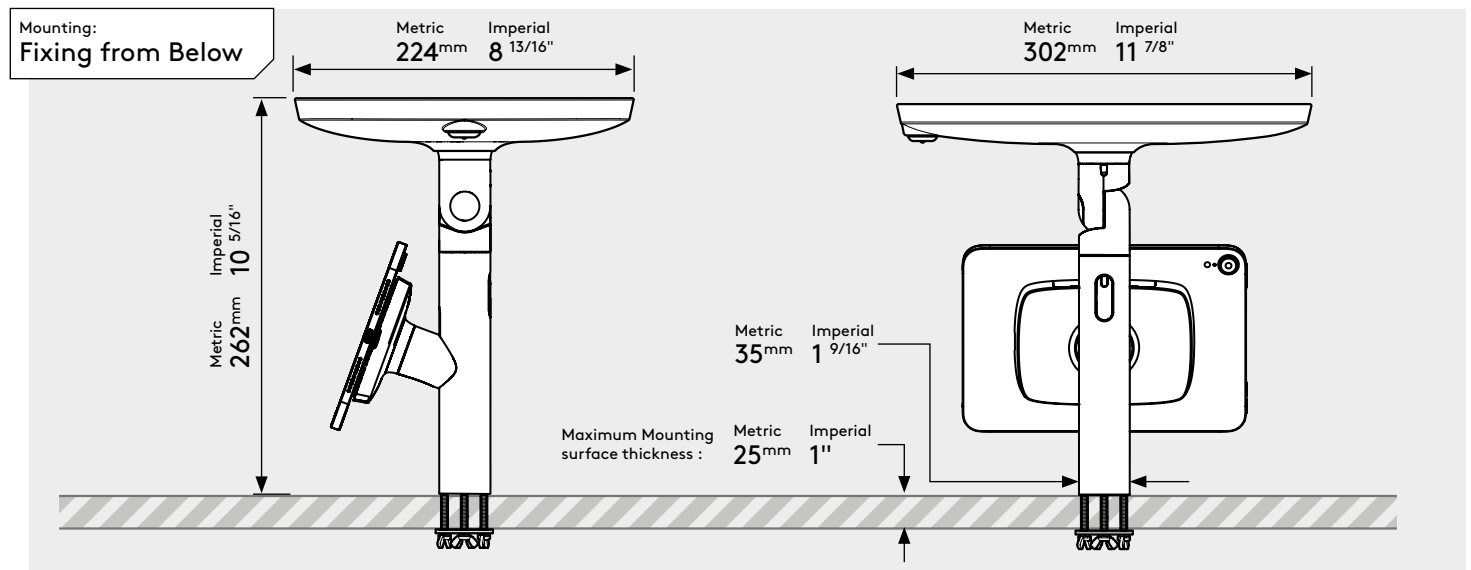
Case:	Arm:	Mounting:	Packaged weight:	Colour:
Mini	Twin	Fixing from <b>Below</b> Fixing from <b>Above</b>	2.16kg	White Black



# PRODUCT DATA SHEET - ORIGINAL TWIN (MIDI CASE)

**bouncepad®**

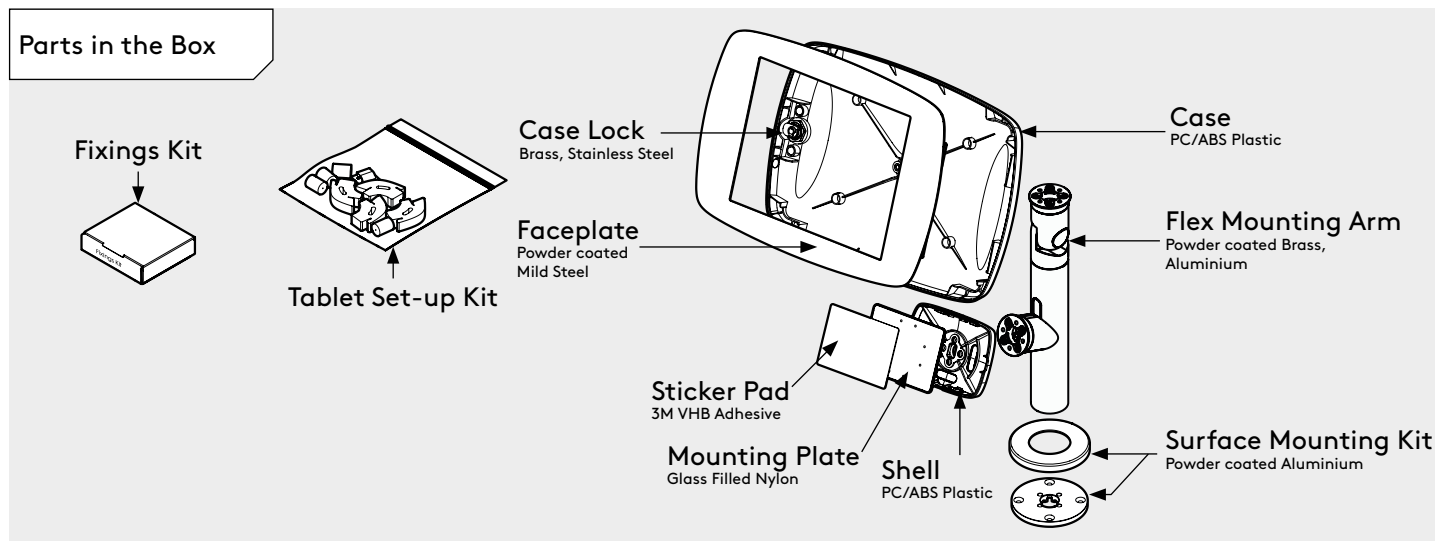
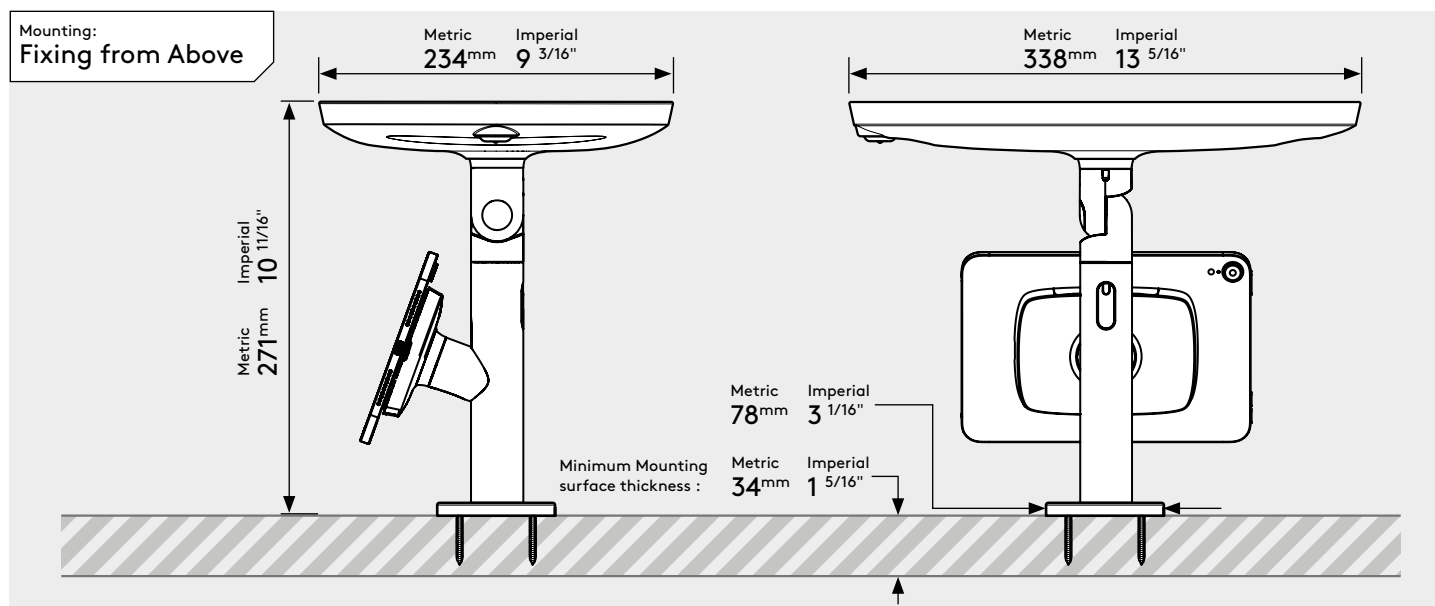
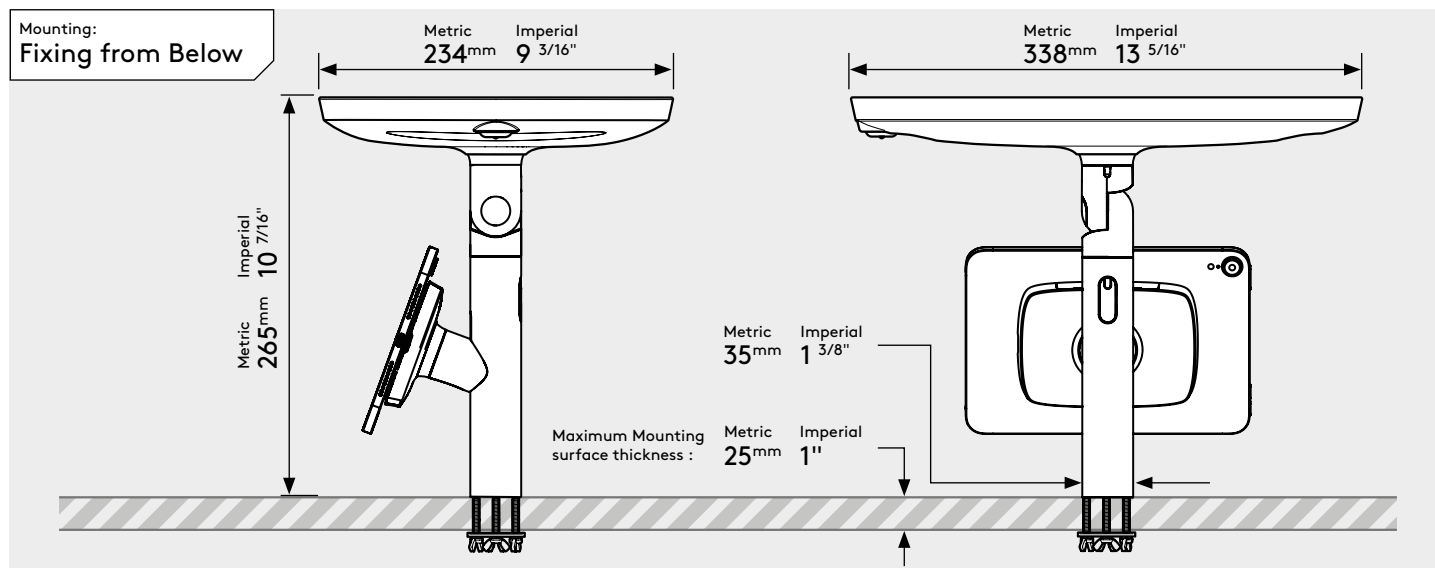
Case:	Arm:	Mounting:	Packaged weight:	Colour:
Midi	Twin	Fixing from <b>Below</b>  Fixing from <b>Above</b>	2.48kg	White Black



# PRODUCT DATA SHEET - ORIGINAL TWIN (MAXI CASE)

**bouncepad®**

Case:	Arm:	Mounting:	Packaged weight:	Colour:
Maxi	Twin	Fixing from <b>Below</b> Fixing from <b>Above</b>	2.62kg	White Black



# PRODUCT DATA SHEET - ORIGINAL TWIN (MEGA CASE)

**bouncepad®**

Case:	Arm:	Mounting:	Packaged weight:	Colour:
Mega	Twin	Fixing from <b>Below</b> Fixing from <b>Above</b>	2.71kg	White Black

