



The product images are for illustration purposes only. Actual product appearance, ports, keyboard layout, and accessories may vary by model.

- Intel Core Ultra 7 265, 20C (8P + 12E) / 20T, Max Turbo up to 5.3GHz, 30MB Intel Smart Cache
- 1x 32GB SODIMM DDR5-5600
- 1TB SSD M.2 2280 PCIe 4.0x4 NVMe Opal 2.0
- NVIDIA GeForce RTX 5060 8GB GDDR7
- Windows 11 Pro, English
- Case color - Luna Grey
- 1-year, Onsite

Premier Support - A direct 24x7x365 line to our most elite technicians.

- Advanced technical support, 24x7x365, in more than 100 markets
- Technical Account Managers for proactive relationship and escalation management
- Comprehensive hardware & OEM software support
- Priority on service delivery and repair parts
- Single point of contact for simplified end-to-end case management
- Lenovo Service Connect Portal for customized reporting and product support

Accidental Damage Protection - Protection of your PC from the unexpected.

Experience shows that a significant portion of devices may be damaged (and not covered under warranty) in the first three years. Lenovo's Accidental Damage Protection service covers accidents beyond the system warranty such as drops, spills, bumps and even electrical surges. Make sure your new device has maximum protection, avoid unplanned costs and get peace of mind.

Base Warranty - Included with the systems you purchase, default 1- or 3-year coverage window.

Warranty Extensions & Upgrades - Service and protection that's right for your circumstances.

- Pick Up & Return Courier
- Onsite Support
- Technician Installed Customer
- Replaceable Unit Service
- International Warranty Upgrade

Recommended Accessories United Kingdom



Lenovo Wireless Speakerphone 6000

4Y71Q47766



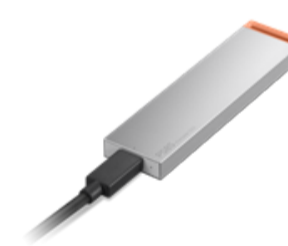
ThinkPad Bluetooth Presenter Mouse (Aura Edition)

4Y51T62792



Lenovo USB 20Gbps USB-C to USB-C Cable 1.5m

4X91U92143



Lenovo PS8S Portable SSD 4TB

4XB1T91892



Lenovo Select FHD Webcam Gen2

GXC1S15023



Kensington MicroSaver DS 2.0 Cable Lock from Lenovo

4XE1L68273

>> [View More Accessories](#)

PERFORMANCE**Processor**

Intel Core™ Ultra 7 265, 20C (8P + 12E) / 20T, Max Turbo up to 5.3GHz, 30MB Intel® Smart Cache

AI PC Category

AI PC^[1]

NPU

Integrated Intel® AI Boost, up to 13 TOPS

Graphics

NVIDIA GeForce RTX™ 5060 8GB GDDR7

Chipset

Intel® Q870 Chipset

Memory

1x 32GB SODIMM DDR5-5600

Memory Slots

Two DDR5 SODIMM slots, dual-channel capable

Max Memory^[2]

Up to 64GB DDR5-5600

Storage

1TB SSD M.2 2280 PCIe® 4.0x4 NVMe® Opal 2.0

Max Storage Support^[3]

Up to four drives, 4x M.2 SSD • M.2 SSD up to 2TB each^[4]

RAID Preset

None

Card Reader

No card reader

Optical

None

Audio Chip

High Definition (HD) Audio, one of Realtek® ALC233VB / Realtek® ALC256 / Conexant CX11771 codec.

Speakers

2Wx1

Power Supply

350W 92%

DESIGN**Keyboard**

USB, Calliope, Black, English (US)

Mouse

USB Calliope Mouse, Black

Expansion Slots

Five M.2 slots (one for WLAN, four for SSD / discrete NPU)

Case Color

Luna Grey

Pen

Pen Not Supported

Form Factor

Tiny (3.6L)

Dimensions (WxDxH)^[5]

- Ultra (without rubber feet) | 195 x 191 x 108 mm (7.68 x 7.52 x 4.25 inches)
- Ultra (with rubber feet) | 195 x 191 x 111 mm (7.68 x 7.52 x 4.37 inches)

Weight^[6]

Around 3.7 kg (8.2 lbs)

CONNECTIVITY**WLAN + Bluetooth**

Intel® Wi-Fi® 6E AX211, 802.11ax 2x2 + BT5.3, vPro®^[7]

WWAN

WWAN Not Supported

Ethernet

Integrated 100/1000M

Front Ports

- 1x USB-C® (USB 20Gbps / USB 3.2 Gen 2x2), data transfer only
- 2x USB-A (USB 10Gbps / USB 3.2 Gen 2), one supports 5V@2.1A charging
- 1x headphone / microphone combo jack (3.5mm)

Rear Ports^[8]

- 1x Thunderbolt™ 4 / USB4® 40Gbps (support data transfer and DisplayPort™ 1.4b)
- 1x USB-A (USB 5Gbps / USB 3.2 Gen 1)
- 3x USB-A (USB 10Gbps / USB 3.2 Gen 2), one supports Smart Power On
- 1x HDMI® 2.1 TMDS
- 1x HDMI® 2.1b FRL
- 1x DisplayPort™ 1.4b
- 3x DisplayPort™ 2.1b
- 1x Ethernet (GbE RJ-45)

Optional Rear Ports (configured)

- Thunderbolt™ 4
- 3x DP 2.1b, 1x HDMI® 2.1b FRL on NVIDIA GeForce RTX™ 5060

SECURITY & PRIVACY**Security Chip**

Discrete TPM 2.0, TCG certified, FIPS 140-2 certified

Fingerprint Reader

No fingerprint reader

Physical Locks

Kensington Security Slot™

MANAGEABILITY**System Management^[9]**

Intel® vPro® Enterprise

SERVICE**Base Warranty**

1-year, Onsite

Included Upgrade

None

CERTIFICATIONS**Green Certifications**

- ENERGY STAR® 9.0
- ErP Lot 3
- GREENGUARD®
- RoHS compliant
- TCO Certified, generation 10

Other Certifications

TÜV Rheinland® Low Noise

SOFTWARE**Operating System**

Windows® 11 Pro, English

Bundled Software

None

ACCESSORIES**Bundled Accessories**

None

MODEL

TopSeller : Yes **EAN / UPC / JAN**: 199272766285
Announce Date: 2025-08-26 **End of Support** : 2032-01-10

Note:

- [1] AI PCs have a NPU capable of 10+ TOPs to run the Copilot assistant by pressing the optional Microsoft Copilot key or using Win + C.
 [2] The max memory is based on the test results with current Lenovo memory offerings.
 [3] The max capacity of each disk type is based on the test results with current Lenovo storage offerings.
 [4] Discrete NPU and 1st SSD are mutually exclusive.
 [5] The system dimensions may vary depending on configurations.
 [6] The system weight is approximate and based on results in Lenovo lab, which varies depending on the source of component, variance of the distribution of each component, and manufacturing process. It may not be the exact weight for each specific model.
 [7] Intel vPro platform requires the hardware and software necessary to deliver the manageability use cases, security features, system performance, and stability that define the platform. For detailed vPro support information, please refer to the System Management section.
 [8] For video ports on discrete graphics, please see [graphics section](#)
 [9] Intel vPro offers a superset of DASH's defined capabilities.

- Please refer to the official [Lenovo store website](#) or contact a local Lenovo sales representative or authorized business partner for current inventory and purchase options.
- Lenovo reserves the right to change specifications without notice.