



PERFORMANCE

Processor
Intel® Core Ultra 7 255H, 16C (6P + 8E + 2LPE) / 16T, Max Turbo up to 5.1GHz, 24MB Intel Smart Cache

AI PC Category
AI-Ready Workstations

NPU
Integrated Intel® AI Boost, up to 13 TOPS

Graphics
Integrated Intel® Arc™ 140T GPU Functions as Intel Graphics

Chipset
Intel® SoC Platform

Memory
1x 32GB SODIMM DDR5-5600 Non-ECC

Memory Slots
Two DDR5 SODIMM / CSODIMM slots, dual-channel capable

Max Memory
Up to 96GB (2x 48GB DDR5 CSODIMM)

Storage
512GB SSD M.2 2280 PCIe® 4.0x4 NVMe® Opal 2.0

Storage Slot
One M.2 2280 PCIe® 4.0 x4 slot

Max Storage Support^[1]
Up to one 2TB M.2 2280 Gen 5 Performance SSD

Card Reader
No card reader

Audio Chip
High Definition (HD) Audio, Realtek® ALC3287 codec

Speakers
Stereo speakers, 2W x2, Dolby Audio™

Microphone
2x, Array

Camera
5.0MP + IR with Privacy Shutter and Human Presence Detection

Battery
57Wh

Power Adapter
100W USB-C® Slim (3-pin)

DESIGN

Display
14.5" WUXGA (1920x1200) IPS 400nits Anti-glare, 45% NTSC, 60Hz, Eyesafe®, TÜV Low Blue Light, Touch

Touchscreen
Add-on Film Touch, 10-point Multi-touch

Screen-to-Body Ratio
88%

Color Calibration
AICCP Color Calibration

Pen
Pen Not Supported

Keyboard
Backlit, English

Dimensions (WxDxH)^[2]
325.5 x 227.6 x 11.2 / 15.1 (front / rear), 21.7 (maximum) mm 12.81 x 8.96 x 0.44 / 0.59 (front / rear), 0.85 (maximum) inches

Weight^[3]
• Models with integrated graphics | Starting at 1.60 kg (3.53 lbs)
• Models with discrete graphics | Starting at 1.64 kg (3.61 lbs)

Case Color
Black

Case Material
Aluminium (Top), Aluminium (Bottom)

SOFTWARE

Operating System
Windows® 11 Pro, English (US) / English (UK)

Bundled Software
Lenovo® AI Now

CONNECTIVITY

WLAN + Bluetooth
Intel® Wi-Fi® 7 BE201, 802.11be 2x2 + BT5.4

WWAN
Non-WWAN

SIM Card
None

Ethernet
100/1000M (RJ-45)

Standard Ports
• 1x USB-A (USB 5Gbps / USB 3.2 Gen 1)
• 1x USB-A (USB 5Gbps / USB 3.2 Gen 1), Always On
• 2x Thunderbolt™ 4, with USB PD 3.0
• 1x HDMI® 2.1, up to 4K/60Hz
• 1x Headphone / microphone combo jack (3.5mm)
• 1x Ethernet (GbE RJ-45)
• 1x Security keyhole

Docking
Various docking solutions supported via Thunderbolt™ or USB-C®. For more compatible docking solutions, please visit [Docking for ThinkPad P14s Gen 6 \(Intel\)](#)

SECURITY & PRIVACY

Security Chip
Discrete TPM 2.0 Enabled

Physical Locks

Kensington® Nano Security Slot, 2.5 x 6 mm

Fingerprint Reader
Touch Style, Match-on-Chip, Integrated in Power Button

Other Security
• Bottom cover tamper detection
• Camera privacy shutter
• Ultrasonic Human Presence Detection for IR camera
• IR camera for Windows® Hello (facial recognition)

MANAGEABILITY

System Management
Non-vPro®

SERVICE

Base Warranty
3-year, Courier or Carry-in with 1-year Battery

Included Upgrade
3Y Premier Support Upgrade from 3Y Courier/Carry-in

ACCESSORIES

CERTIFICATIONS

ISV Certifications
Please visit [ISV certifications for Lenovo® Workstations](#)

Green Certifications
• ENERGY STAR® 9.0
• EPEAT™ Gold Registered
• RoHS compliant
• TCO Certified, generation 10

Mil-Spec Test
MIL-STD-810H military test passed




Other Certifications
• Eyesafe® Certified 2.0
• TÜV Rheinland® Low Blue Light


MODEL

TopSeller : Yes **EAN / UPC / JAN:** 199272953623
Announce Date: 2025-09-13 **End of Support** : 2032-04-03

- Please refer to the official [Lenovo store website](#) or contact a local Lenovo sales representative or authorized business partner for current inventory and purchase options.
- Lenovo reserves the right to change specifications without notice. To see more note information, please access the [web page](#).

Premier Support - A direct 24x7x365 line to our most elite technicians.

-  Advanced technical support, 24x7x365, in more than 100 markets
-  Comprehensive hardware & OEM software support
-  Single point of contact for simplified end-to-end case management

-  Technical Account Managers for proactive relationship and escalation management
-  Priority on service delivery and repair parts
-  Lenovo Service Connect Portal for customized reporting and product support

Accidental Damage Protection - Protection of your PC from the unexpected.

Experience shows that a significant portion of devices may be damaged (and not covered under warranty) in the first three years. Lenovo's Accidental Damage Protection service covers accidents beyond the system warranty such as drops, spills, bumps and even electrical surges. Make sure your new device has maximum protection, avoid unplanned costs and get peace of mind.

Base Warranty - Included with the systems you purchase, default 1- or 3-year coverage window.

Warranty Extensions & Upgrades - Service and protection that's right for your circumstances.

- Pick Up & Return Courier
- Onsite Support
- Technician Installed Customer
- Replaceable Unit Service
- International Warranty Upgrade

Lenovo may not offer the products, services or features discussed in this document in all regions. Lenovo may withdraw an offering at any time. Information is subject to change without notice. Consult your local representative for information on offerings available in your area. Lenovo reserves the right to change specifications or other product information without notice. Lenovo is not responsible for photographic or typographical errors. Lenovo provides this publication "as is" without warranty of any kind, either express or implied, including the implied warranties of merchantability or fitness for a particular purpose.

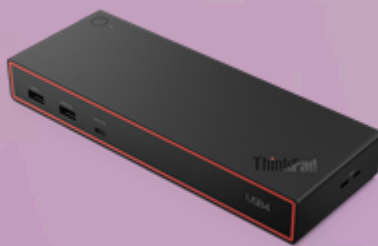
Recommended Accessories



Lenovo Dual-Mode Wireless ANC Headset 6550 (USB-C, Teams) 4XD1S19778



Lenovo Legion 17" Gaming Backpack GB800 (Light Gray) GX41U39300



ThinkPad USB4 Dock 5000 40BF0100EU

Please click [here](#) to view the full list of accessories.



PSREF
Product Specifications
Reference