

# Lenovo Yoga Pro 27UD-10 User Guide

**Lenovo**

# Product numbers

C25270UQ0

67E5RAC2WW



Dolby, Dolby Vision, Dolby Atmos, and the double-D symbol are registered trademarks of Dolby Laboratories Licensing Corporation. Manufactured under license from Dolby Laboratories. Confidential unpublished works. Copyright © 2012–2024 Dolby Laboratories. All rights reserved.

This monitor supports Dolby Vision experiences when connected to an Xbox Series X|S console or a PC running Windows 11 or later with the HEVC codec installed.

To enable the Dolby Vision feature, your graphics card must be of the AMD 7000 series or higher. If not, please disable the Freesync function before attempting again.

## First Edition (November 2025)

### © Copyright Lenovo 2025

LENOVO products, data, computer software, and services have been developed exclusively at private expense and are sold to governmental entities as commercial items as defined by 48 C.F.R. 2.101 with limited and restricted rights to use, reproduction and disclosure.

LIMITED AND RESTRICTED RIGHTS NOTICE: If products, data, computer software, or services are delivered pursuant a General Services Administration "GSA" contract, use, reproduction, or disclosure is subject to restrictions set forth in Contract No. GS-35F-05925.

---

# Contents

<b>Safety information</b> .....	<b>iii</b>
General Safety guidelines .....	iii
<b>Chapter 1. Getting started</b> .....	<b>1-1</b>
Shipping contents .....	1-1
Notice for use .....	1-1
Product overview .....	1-2
Types of adjustments .....	1-2
Tilt .....	1-2
Height Adjustment.....	1-2
Monitor controls .....	1-3
Cable lock slot .....	1-3
Audio.....	1-4
Mic .....	1-4
Ambient Light Sensor .....	1-4
Setting up your monitor .....	1-5
Connecting and turning on your monitor.....	1-5
Operating the monitor webcam .....	1-10
Registering your option.....	1-11
DP Power Saving Mode .....	1-12
<b>Chapter 2. Adjusting and using your monitor</b> .....	<b>2-1</b>
Screen surface cleaning .....	2-1
Comfort and accessibility.....	2-2
Arranging your work area .....	2-2
Positioning your monitor .....	2-2
Quick tips for healthy work habits .....	2-3
Adjusting your monitor image .....	2-4
Using the direct access controls .....	2-4
Using the On-Screen Display (OSD) controls.....	2-5
Selecting a supported display mode.....	2-9
Understanding power management .....	2-10
Caring for your monitor.....	2-11
Detaching the monitor base and stand.....	2-11
Wall Mounting (Optional) .....	2-11
<b>Chapter 3. Reference information</b> .....	<b>3-1</b>
Monitor specifications .....	3-1
Troubleshooting.....	3-3
Manually installing the monitor driver .....	3-5
Getting further help.....	3-5
<b>Appendix A. Service and Support</b> .....	<b>A-1</b>
Registering your option.....	A-1
Online technical support.....	A-1
Quebec Disclaimer .....	A-1
Telephone technical support.....	A-1
<b>Appendix B. Notices</b> .....	<b>B-1</b>
Recycling information .....	B-3
Trademarks .....	B-3
Power cords and power adapters.....	B-4

---

## Safety information

---

### General Safety guidelines

For tips to help you use your computer safely, go to:  
<http://www.lenovo.com/safety>

Before installing this product, read the Safety Information.



#### DANGER

##### To avoid shock hazard:

- Do not remove the covers.
- Do not operate this product unless the stand is attached.
- Do not connect or disconnect this product during an electrical storm.
- The power cord plug must be connected to a properly wired and grounded power outlet.
- Any equipment to which this product will be attached must also be connected to properly wired and grounded power outlets.
- To isolate the monitor from the electrical supply, you must remove the plug from the power outlet. The power outlet should be easily accessible.

To take special precautions to avoid the introduction of hazards when operating, installing, servicing, transporting or storing equipment, the necessary instructions shall be made available.

To reduce the risk of electric shock, do not perform any servicing other than that contained in the operating instructions unless you are qualified to do so.

##### Handling

- If your monitor weighs more than 18 kg (39.68 lb), it is recommended that it be moved or lifted by two people.



---

## Chapter 1. Getting started

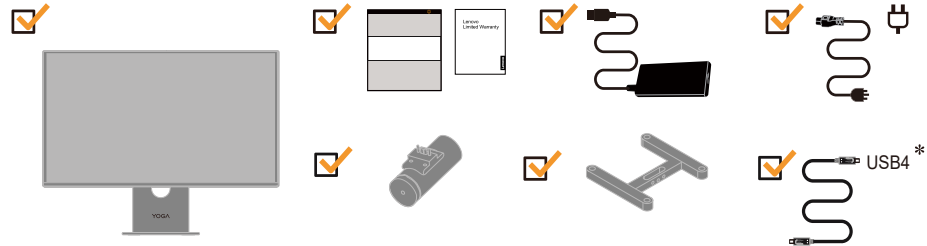
This User's Guide contains detailed information on your Flat OLED Monitor. For a quick overview, please see the Setup Poster that was shipped with your monitor. Yoga Pro 27UD-10 supports Lenovo Accessories and Display Manager - **Artery**.

---

### Shipping contents

The product package should include the following items:

- Flat OLED Monitor
- Information Flyer
- Lenovo Limited Warranty Booklet
- Adapter
- Power Cord
- USB4 Type-C Cable
- Camera
- VESA Transfer Mount



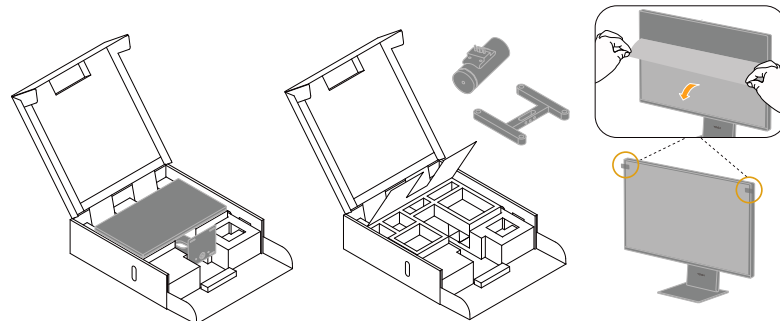
\*: Depending on many factors such as the processing capability of peripheral devices, file attributes, and other factors related to system configuration and operating environments, the actual transfer rate using the various USB connectors on this device will vary and is typically slower than the data rates as defined by the respective USB specifications: - 5 Gbit/s for USB 3.1 Gen 1; 10 Gbit/s for USB 3.1 Gen 2 & 20 Gbit/s for USB 3.2; 40 Gbit/s for USB4.

---

### Notice for use

To set up your monitor, please see the illustrations below.

**Note:** Do not touch the monitor within the screen area. The screen area is glass and can be damaged by rough handling or excessive pressure.



1. Lay the pizza box flat on the ground and fully open it.
2. Stand up the monitor with both hands carefully, and Take out accessories.
3. Be careful to remove the protective film of screen.

**Note 1:** Pinch both designated tear areas and slowly peel off the protective film in the direction of the arrow.

**Note 2:** To attach a VESA mount, please see "Wall Mounting (Optional)" on page 2-11.

---

## Product overview

This section will provide information on adjusting monitor positions, setting user controls, and using the cable lock slot.

### Types of adjustments

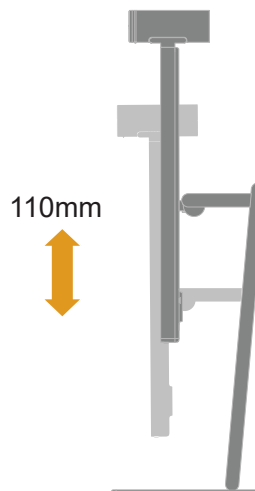
#### Tilt

Please see the illustration below for an example of the tilt range.



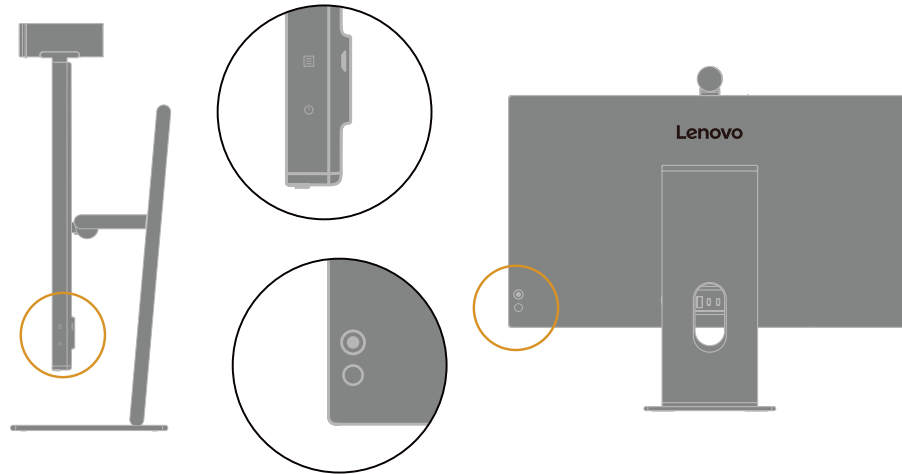
#### Height Adjustment

For height adjustment, user needs to press down or lift up the monitor.



## Monitor controls

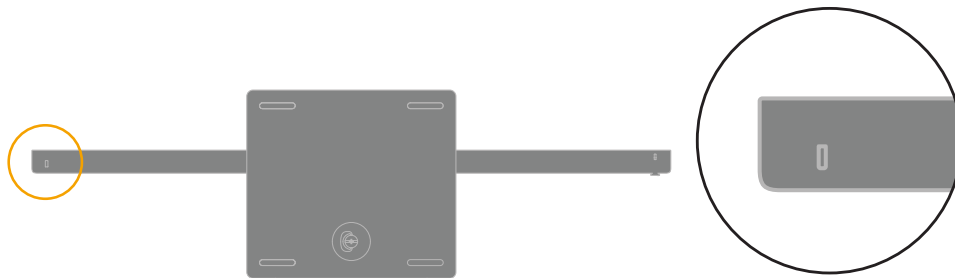
Your monitor has controls on the back which are used to adjust the display.



For information on how to use these controls, please see “Adjusting your monitor image” on page 2-4.

## Cable lock slot

Your monitor is equipped with a cable lock slot located on the bottom of your monitor.

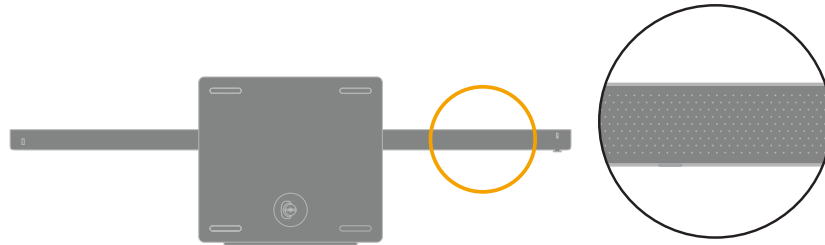


## Audio

Internal speakers Rated Power 34W(7W\*4 Woofer speaker & 3W\*2 Tweeter speaker), Audio features customized Dolby and Waves enhancements(To enable “Dolby Atmos”, please ensure you are connecting to Windows 11 PC).

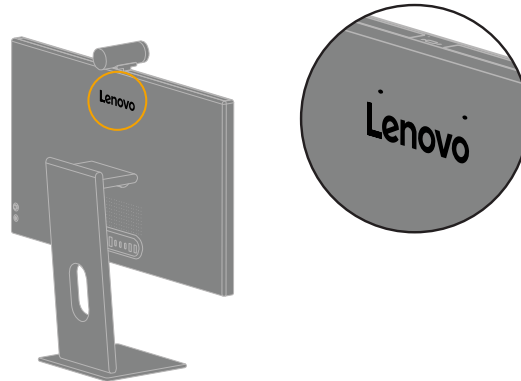
Dolby Atmos needs to be used in conjunction with Dolby software.When you perform a system update, the system will automatically download the “Dolby Setting”.

**Note:** When the calling software (such as Teams, WeChat) is turned on or monitor mics are enabled, the display will automatically enter phone mode, and at this time, there will be no Dolby or Waves sound effects.



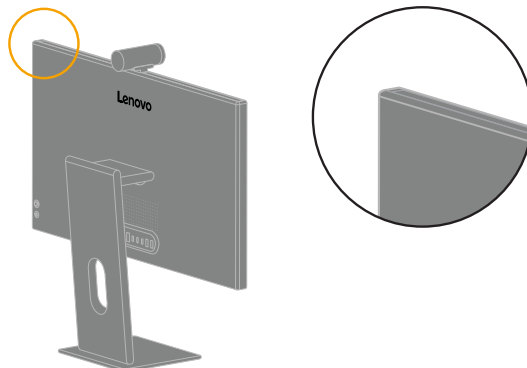
## Mic

Features active noise cancellation (4 Channel Microphone, SNR(Signal-to-Noise Ratio)70db).



## Ambient Light Sensor

Automatically adjusts monitor brightness.



---

## Setting up your monitor

This section provides information on how to set up your monitor.

### Connecting and turning on your monitor

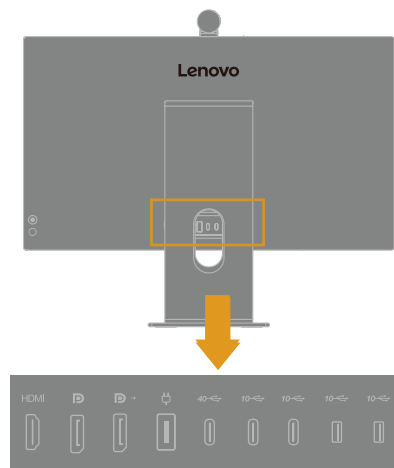
**Note:** Be sure to read the Safety information located on page iii before carrying out this procedure.

1. Power off your computer and all attached devices, and unplug the computer power cord.



**Note:** The type of plug & Socket shown here are for illustration only.

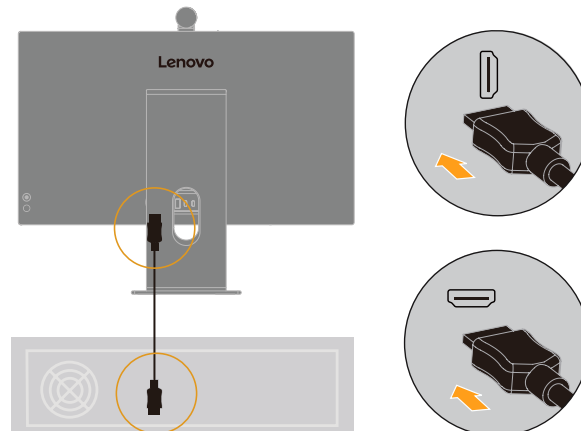
2. Connect the cables according to below icon indication.



3. For computer in HDMI connecting.

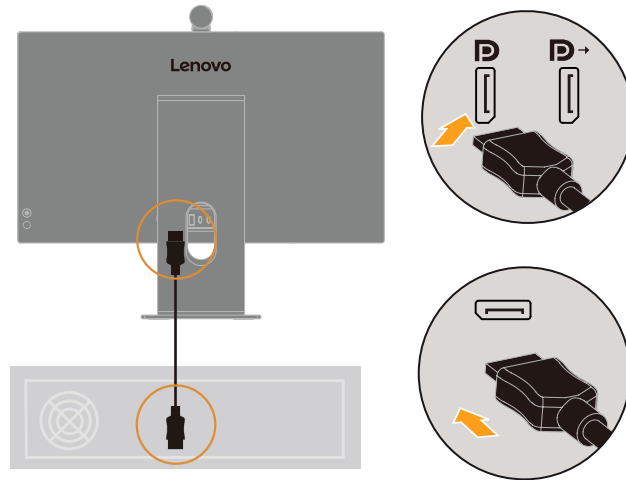
**Note:** Lenovo recommends that customers who require to use the HDMI input on their monitor purchase the “Lenovo HDMI to HDMI cable OB47070” [www.lenovo.com/support/monitoraccessories](http://www.lenovo.com/support/monitoraccessories).

### HDMI



4. For computer in DP connecting.

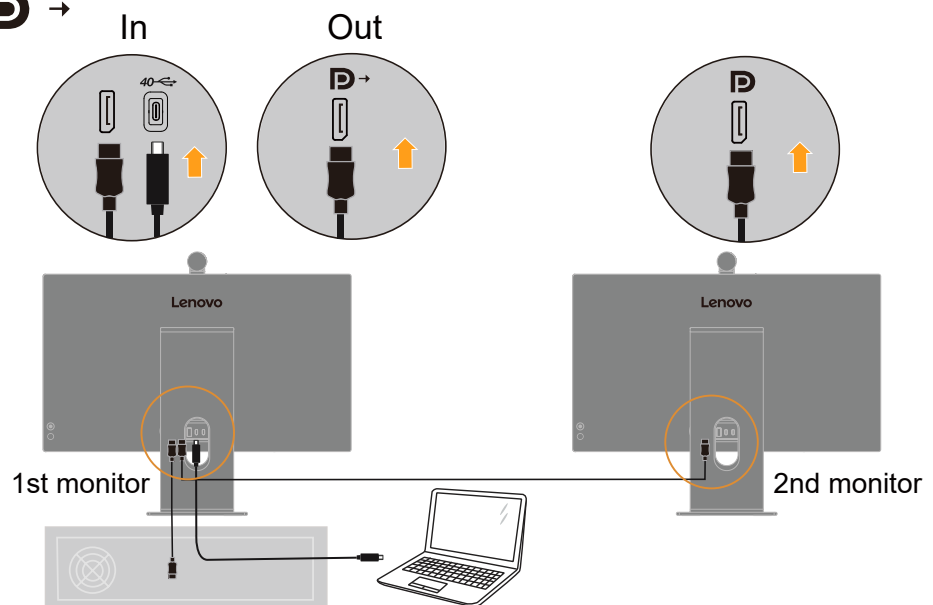
**Note :** The left DP port is for DP in, Don't plug it in wrongly.



5. Connect one end of the DP cable to the DP input on the back of another monitor, and the other end to the DP output connector (for daisy chain) on the monitor.

**Note :** Lenovo recommends that customers who require to use the Display Port input on their monitor purchase the “ Lenovo Display Port to Display Port Cable 0A36537 ”.

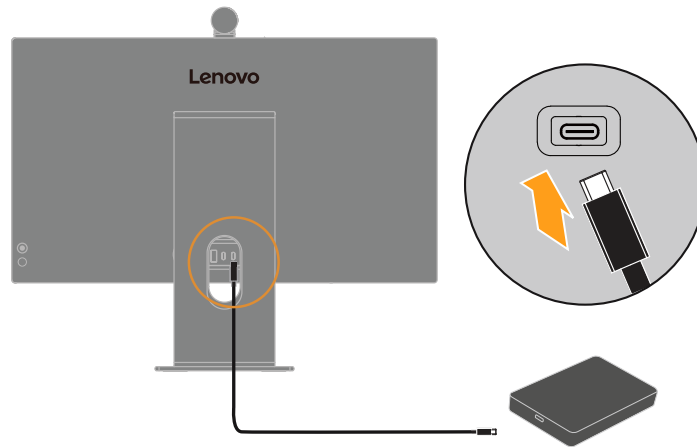
[www.lenovo.com/support/monitoraccessories](http://www.lenovo.com/support/monitoraccessories).



6. For computer in USB type C connecting.

**Note:** USB type C port 5V/0.9A

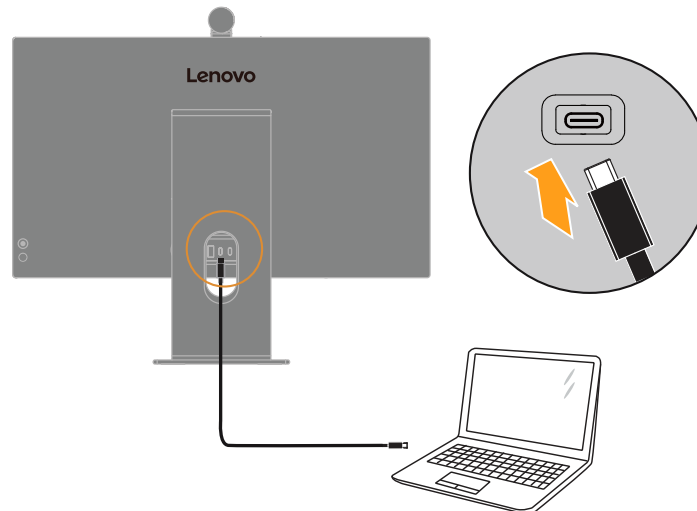
10  \*



7. For computer in USB4 Type-C connecting.

**Note:** 5Vdc/3A 9Vdc/3A 15Vdc/3A 20Vdc/5A 20Vdc/7A(Lenovo VID: 17EF; PID: A61B/ A63A/ A637/ A621) 28Vdc/5A

40  \*



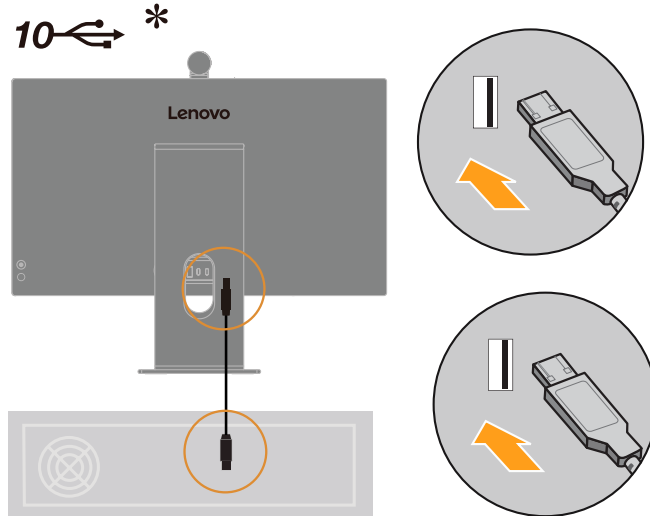
**WARNING:** The Lenovo 26.5" 4K Monitor-Yoga Pro 27UD-10 supports USB Type-C Power Delivery 3.1 specification and can provide a maximum output of up to 140 W. For safety consideration, this USB Type-C port must be connected to the approved products with the inbox USB Type-C cable. For the list of the approved products, refer the products compatible with USB Type-C Power Delivery 3.1 (Extended Power Range 140W) Tech sheet at <https://support.lenovo.com/solutions/ACC500306>.

If there are any \* tag, you can consult the comments on page 1-1.

8. Connect one end of the USB cable to the USB downstream terminal of the monitor, and connect the other end of the USB cable to an appropriate USB port on your device.

**Note:** The USB downstream port does not provide power while the monitor switch is off.

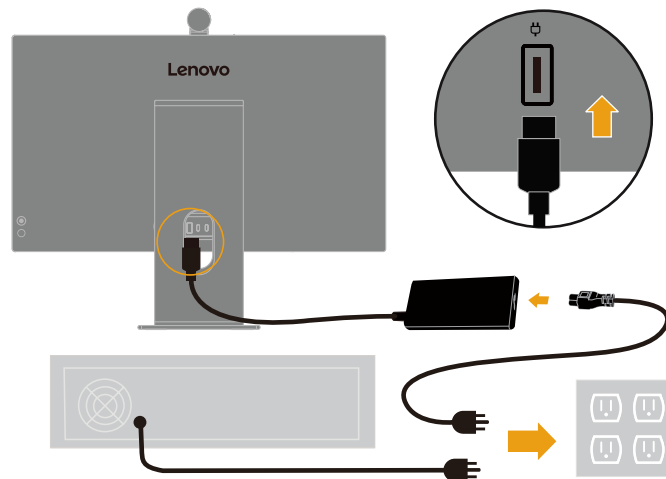
USBA port below, 5V/0.9A



If there are any \* tag, you can consult the comments on page 1-1

9. Connect the power cord to the power adapter and insert the power adapter into the monitor, then plug the monitor power cord and the computer cord into grounded electrical outlets. If a power cord is not included in the package, please use a compatible power cord or contact your supplier to purchase one.

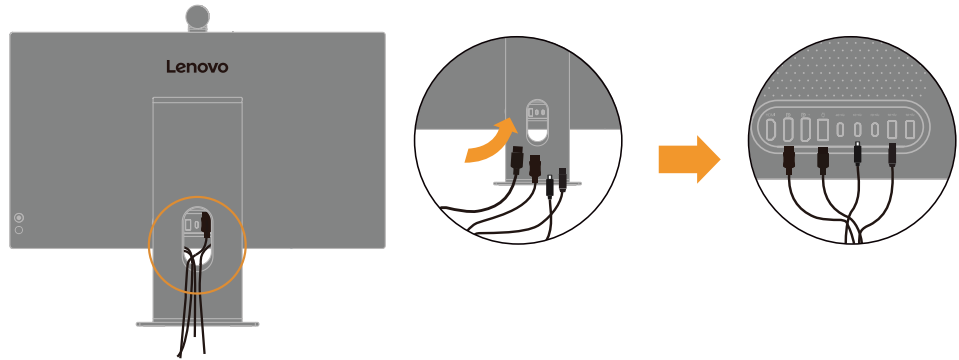
**Note:** A certified power supply cord has to be used with this equipment. The relevant national installation and or equipment regulations shall be considered. A certified power supply cord not lighter than ordinary polyvinyl chloride flexible cord according to IEC 60227 (designation H05VV-F 3G 0.75mm<sup>2</sup> or H05VVH2-F2 3G 0.75mm<sup>2</sup>) shall be used. Alternative a flexible cord be of synthetic rubber according to IEC 60245 (designation H05RR-F 3G 0.75mm<sup>2</sup>) shall be used.



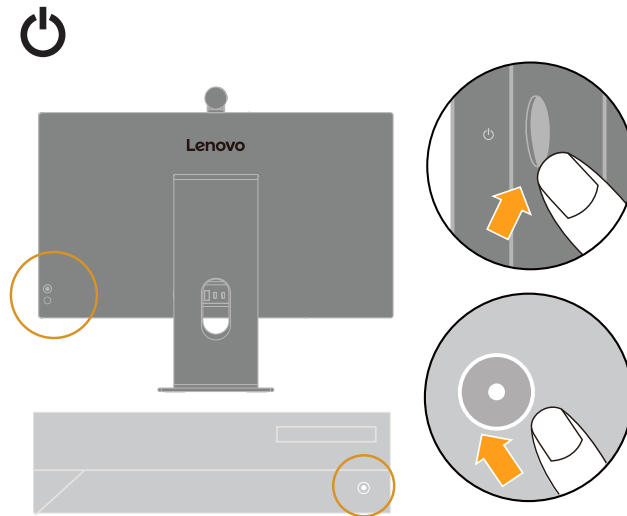
**Note:** The type of plug & Socket shown here are for illustration only.

10. Connect the cables with cable clip.

**Note:** When adjusting the tilt and height, ensure the cable connections are stable.



11. Power on the monitor and the computer.



12. When you install the monitor driver, download the driver that corresponds to your monitor model from the Lenovo website [https://pcsupport.lenovo.com/solutions/yoga\\_pro\\_27ud\\_10](https://pcsupport.lenovo.com/solutions/yoga_pro_27ud_10). Refer to the “Manually installing the monitor driver” on page 3-5” section to install the driver.



---

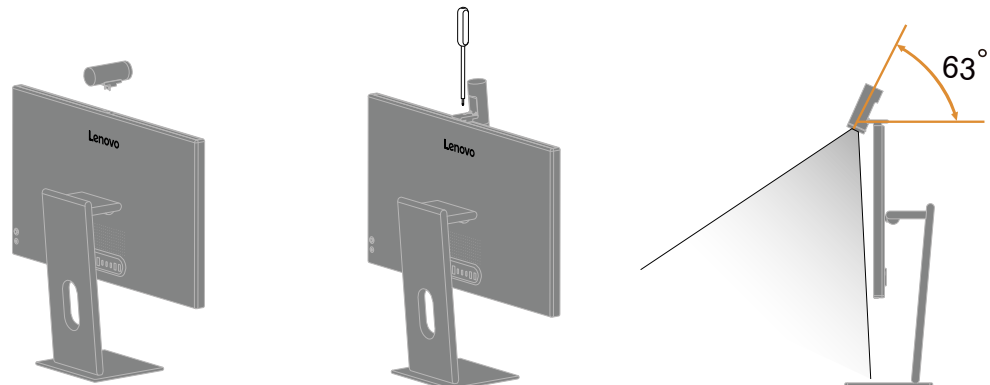
## Operating the monitor webcam

1. Take out the camera and insert it into the Type-C hole on the top side of the monitor.
2. Rotating the camera and lock the anti-theft screw in the lock hole with 1# Screwdriver.  
**Note:** The screwdriver needs to be purchased by the user.
3. Rotate the camera to a suitable angle as needed when use.  
**Note:** The camera suggest not to capture the screen when use.

### **Note:**

#### **The webcam which offers the following:**

- 4K video at 30 FPS and UHD Video.
- Auto Focus – FACE AE(Auto Exposure)/AF(Auto Focus).
- Support deskview by tilt, When the angle is  $50^{\circ} \pm 5^{\circ}$ , the view will rotate. The desk view function will be activated when the rotation angle exceeds  $55^{\circ}$ . It is recommended that the rotation angle does not exceed  $45^{\circ}$  during normal use.
- Video noise reduction.



---

## Registering your option

Thank you for purchasing this Lenovo product. Please take a few moments to register your Product and provide us with information that will help Lenovo to better serve you in the future. Your feedback is valuable to us in developing product and services that are important to you, as well as in developing better ways to communicate with you. Register your option on the following Web site: <http://www.lenovo.com/register>

Lenovo will send you information and updates on your registered product unless you indicate on the Web site questionnaire that you do not want to receive further information.

---

## DP Power Saving Mode

DP(DisplayPort) Power Saving is a Lenovo-unique feature that uses Panel Replay technology to lower refresh rate (e.g. to 48Hz) to save power

### Panel Replay

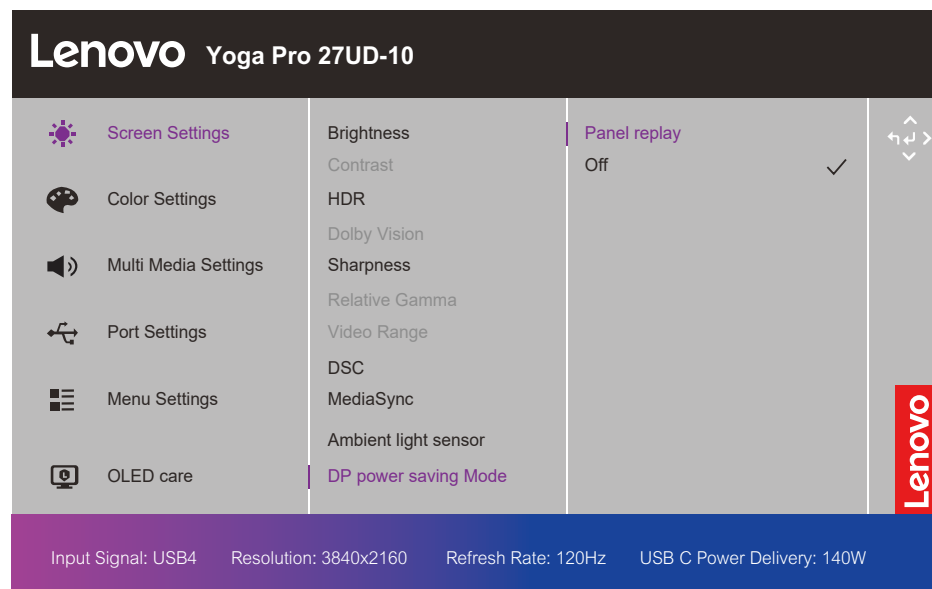
Panel Replay is an advanced display power-saving technology.

After Panel replay is enabled, under static image condition, the monitor will automatically drop from high refresh rate to low refresh rate , thus achieving power saving effect.

### Enable Panel Replay

This feature is applicable when connecting USB-C or DisplayPort to the source.

Press the Menu key to access the OSD menu, select Screen Settings to access the sub-menu of the next level, and then select the DP power saving mode/Panel replay option to access.



### Support PC list

DP Power Saving (Panel Replay) can only be enabled with compatible PCs, please refer to <https://pcsupport.lenovo.com> for details.

### Notes:

DP Power Saving (Panel Replay) is NOT supported when using the following features: Daisy Chain. When any of these features are enabled, the Panel Replay function will be grayed out (disabled) in the settings.

---

## Chapter 2. Adjusting and using your monitor

This section will give you information on adjusting and using your monitor.

---

### Screen surface cleaning

Cleaners		
	Available	Not available
Cloth	Microfiber Cloth (clean, soft, lint - free)	Paper Towel / Toilet Paper Eyeglass Wipes Abrasive Cloth
Cleaner	Filtered / Distilled water Neutral / Alkali Detergent (ex. Dish soap) with water LCD / LED Screen Cleaner (without Acetone)	Toluene / Acetone / Solvent Common Glass Cleaner Household Cleaning Products Abrasive Cleaning Solution Aerosol Spray Cleaner containing Hydrogen Peroxide
Cleaning method for stain(fingerprint)		
Weak level	① Using available dry cloth, wipe the screen surface in one direction at a time to remove stain and dust first. ② Using cloth soaked in distilled water, wipe screen surface in one direction. ③ Using available dry cloth, wipe screen surface to remove moisture.	
Strong level	① Using available dry cloth, wipe the screen surface in one direction at a time to remove stain and dust first. ② Wet a small amount(0.3~0.5ml, 1~2 Drops) of available cleaner in the cloth and wipe screen surface in one direction. <b>Note:</b> Do not directly spray the cleaners on the screen surface. ③ Using available dry cloth, wipe screen surface to remove moisture.	

**Note1:** If it is difficult to clean with cleaner, it is possible to wipe screen surface with cloth wetted a small amount(0.3~0.5ml, 1~2 Drops) of 70% concentration IPA(isopropyl alcohol). But when screen surface is continuously wiped or exposed to IPA, it may be occur screen damage.

**Note2:** When the oil content is accumulated, it is difficult to wipe it in a normal way. So if possible, wipe as soon as it get fingerprint on screen surface.

---

## Comfort and accessibility

Good ergonomic practice is important to get the most from your personal computer and to avoid discomfort. Arrange your workplace and the equipment you use to suit your individual needs and the kind of work that you perform. In addition, use healthy work habits to maximize your performance and comfort while using your computer. For more detailed information on any of these topics, visit the Healthy Computing Web site at: <http://www.lenovo.com/healthycomputing/>.

### Arranging your work area

Use a work surface of appropriate height and available working area to allow you to work in comfort.

Organize your work area to match the way you use materials and equipment. Keep your work area clean and clear for the materials that you typically use and place the items that you use most frequently, such as the computer mouse or telephone, within the easiest reach.

Equipment layout and setup play a large role in your working posture. The following topics describe how to optimize equipment setup to achieve and maintain good working posture.

### Positioning your monitor

Position and adjust your computer monitor for comfortable viewing by considering the following items:

- Recommended viewing distance between the eye and the monitor screen is 1.5x the diagonal of the screen. Solutions in meeting this required distance in cramped office situations include pulling desk away from wall or divider to make room for monitor, using flat panel or compact displays placing the monitor in the desk corner, or placing the keyboard in an adjustable drawer to create a deeper working surface.
- **Monitor height:** Position the monitor so your head and neck are in a comfortable and neutral (vertical, or upright) position. If your monitor does not have height adjustments, you might have to place books or other sturdy objects under the base of the monitor to achieve the desired height. A general guideline is to position the monitor such that the top of the screen is at or slightly below your eye-height when you are comfortably seated. However, be sure to optimize your monitor height so the line of site between your eyes and the center the monitor suits your preferences for visual distance and comfortable viewing when your eye muscles are in a relaxed state.
- **Tilt:** Adjust the tilt of your monitor to optimize the appearance of the screen content and to accommodate your preferred head and neck posture.
- **General location:** Position your monitor to avoid glare or reflections on the screen from overhead lighting or nearby windows.

The following are some other tips for comfortable viewing of your monitor:

- Use adequate lighting for the type of work you are performing.
- Use the monitor brightness, contrast controls, if equipped to optimize the image on your screen to meet your visual preferences.
- Keep your monitor screen clean so you can focus on the screen's contents.

Any concentrated and sustained visual activity can be tiring for your eyes. Be sure to periodically look away from your monitor screen and focus on a far object to allow your eye muscles to relax. If you have questions on eye fatigue or visual discomfort, consult a vision care specialist for advice.

## Quick tips for healthy work habits

The following information is a summary of some important factors to consider to help you remain comfortable and productive while you use your computer.

- **Good posture starts with equipment setup:** The layout of your work area and the setup of your computer equipment have a large effect on your posture while using your computer. Be sure to optimize the position and orientation of your equipment by following the tips outlined in “Arranging your work area” on page 2-1 so you can maintain a comfortable and productive posture. Also, be sure to use the adjustment capabilities of your computer components and office furniture to best suit your preferences now and as your preferences change over time.
- **Minor changes in posture can help avoid discomfort:** The longer you sit and work with your computer, the more important it is to observe your working posture. Avoid assuming any one posture for an extended period of time. Periodically make minor modifications in your posture to help deter any discomforts that might arise. Make use of any adjustments that your office furniture or equipment provide to accommodate changes in posture.
- **Short, periodic breaks help ensure healthy computing:** Because computing is primarily a static activity, it is particularly important to take short breaks from your work. Periodically, stand up from your work area, stretch, walk for a drink of water, or otherwise take a short break from using your computer. A short break from work gives your body a welcome change in posture and helps to ensure you remain comfortable and productive while you do work.

---








## Adjusting your monitor image

This section describes the control features to adjust your monitor image.

### Using the direct access controls

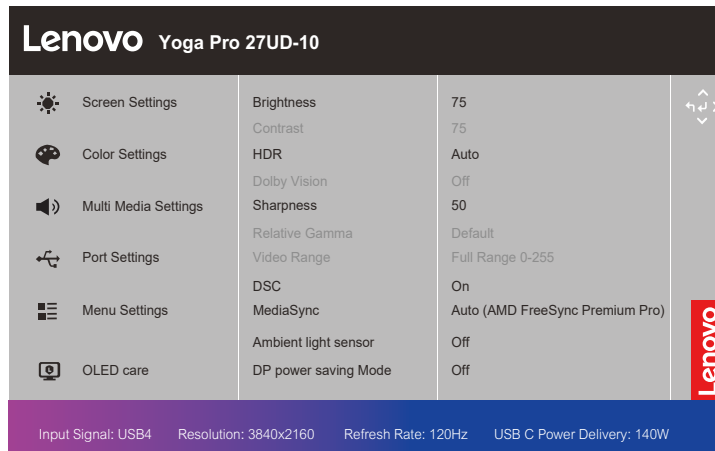
The direct access controls can be used when the On Screen Display (OSD) is not displayed.

Table 2-1. Direct access controls

	Icon	Control	Description
1		Exit	Exit from menu and return before menu
		Input Change	It is a shortcut for directly opening the menu of source-selecting while there is no OSD on the screen.
2		Increase	Press to increase current values on adjustment bar.
		Up	Press to move lighting-indicator on main menu up from active item to last one. It is a shortcut key for directly opening Color Sync Mode while there is no OSD on the screen and Color Sync Mode is enable.
3		Decrease	Press to decrease current values on adjustment bar.
		Down	It is shortcut key for directly adjust Volume while there is no OSD on the screen
4		Menu	Press to open main menu while there is no OSD on the screen . Press and hold for 10 seconds to Lock/un-Lock main menu.
		Enter	Press to enter next level on main menu or sub menu , or return back to previous level while on adjustment bar.
		Right	Press to enter next level on main menu It is a shortcut key for directly opening Fill light mode selection while there is no OSD on the screen.

## Using the On-Screen Display (OSD) controls

To adjust the settings, the user controls can be viewed through the OSD.



To use the controls:

1. Press Menu key to open the main OSD menu.
2. Use **↑** or **↓** to move among the icons. Select an icon and press **↵** to access that function. If there is a sub-menu, you can move between options using **↑** or **↓**, then press **↵** to select that function. Use **↑** or **↓** to make adjustments. Press **↵** to save.
3. Press **←** to move backwards through the sub-menus and exit from the OSD.
4. Press and hold **↵** for 10 seconds to lock the OSD. This will prevent accidental adjustments to the OSD. Press and hold **↵** for 10 seconds to unlock the OSD and allow adjustments to the OSD.

Table 2-2. OSD functions

OSD Icon on Main Menu	Sub menu	Description		Controls and Adjustments	
Screen Settings	Brightness	Adjust bar	-	All input signals	
	Contrast	Adjust bar	-		
	HDR	Auto HDR Photo HDR Movie HDR Game HDR 1000 HDR Off			
	Dolby Vision	On/Off	-		
	Sharpness	Adjust bar	-		
	Relative Gamma	-0.4/-0.2/Default/+0.2/+0.4/Off			
	Video Range	Auto Full Range 0-255 Limited Range 16-235			
	DSC	On/OFF		Only for DP and USB-C port	
	MediaSync/FreeSync Premium Pro	Auto (AMD FreeSync Premium Pro)/Off	-	All input signals	
	Ambient light sensor	On/Off	-		
	DP power saving mode	Panel reply/Off		Only for DP and USB-C port	
Color settings	Color Sync Mode	On/Off	-	All input signals	
	Color mode	sRGB		All input signals	
		DCI-P3			
		Adobe RGB			
		Neutral			
		Warm			
		Cool			
		User	Red-100		
		Green-100			
		Blue-100			
		Close			
	6-axis Color	6-axis Hue	Red Color		
			Green Color		
			Blue Color		
			Cyan Color		
Yellow Color					
Magenta Color					
Reset					
6-axis Saturate		Red Color			
		Green Color			
		Blue Color			
		Cyan Color			
		Yellow Color			
		Magenta Color			
		Reset			
Saturation	Adjust bar	-			
Multi Media Settings	Volume	Adjust bar(0-100)			
	Microphone	On/Off			
	Fill light mode	On/Off			

OSD Icon on Main Menu	Sub menu	Description		Controls and Adjustments
Port Settings	Input Signal	Auto Switch Input	check box	All input signals
		USB4	-	
		DP	-	
		HDMI	-	
	USB	USB Always on	On/ Off	only for USB C port
		USB hub Select	USB 3.2 USB 2.0	
	DP Select	DP1.2 DP1.4	Only for DP port	
DP daisy chain	Auto/on/off	Only for DP and USB-C port		
Mirrored power button	On/Off	only for USB C port		
Menu Settings	Information	Model name	value	All input signals
		Firmware	value	
		Serial Number	Vxxxxxxx	
		HDR	Auto	
		Format	10bit RGB4:4:4	
	Language	English		
		Français		
		Italiano		
		简体中文		
		繁體中文		
		Español		
		日本語		
		Deutsch		
	Русский			
	Українська			
	Thai (ไทย)			
	OSD Timeout	Adjust Bar (5-60)		
Menu Position	Adjust Bar(H/V)			
Button Repeat Rate	Default/ Slow/ Off			
Transparency	0			
	20			
	40			
	60			
	80			
DDC/CI	On/Off			
Reset All Settings	Cancel			
	Factory Reset			
OLED care	Pixel Shift	Slow/Normal/Fast	All input signals	
	Panel Protect	Execute/Cancel		
	Screen Protection notice	6hr/8hr/Off		
	Static Screen Detection	Off/65%/70%/75%/80%/85%/90%/95%		
	Multi Logo Detection	Off10%/20%		
	Taskbar Detection	Off/10%/15%/20%		
	Boundary Detection	Off/10%/15%/20%		
	Low Power	On/Off		
Thermal Modulation	On/Off			
Input: USB4      Resolution:3840*2160      Refresh Rate: 120Hz      USB C Power Delivery: 140W				

OSD Icon on Main Menu	Sub menu	Description	Controls and Adjustments
<p><b>Note1:</b> Please use the screen protection function to avoid image sticking or color spots on the display due to long periods of static images. Image sticking or color spots caused by prolonged use are not covered under this product's warranty.</p> <p><b>Note2:</b> OLED Care adds a screen-off protection reminder (default setting is 6 hours). Every 6/8 hours of use, an OLED Care reminder will pop up. Select Yes to start protection, or select No to continue using until the next six-hour reminder.</p>			

## Selecting a supported display mode

The display mode the monitor uses is controlled by the computer. Therefore, refer to your computer documentation for details on how to change display modes.

The image size, position and shape might change when the display mode changes. This is normal and the image can be readjusted using automatic image setup and the image controls.

Unlike CRT monitors, which require a high refresh rate to minimize flicker, OLED or Curved Panel technology is inherently flicker-free.

The monitor adopts Flicker-Free technology, which clears the eye visible flicker, brings comfort viewing experience and preventing users suffer from eye strain and fatigue.

**Note:** If your system has previously been used with a CRT monitor and is currently configured to a display mode outside the range of this monitor, you may need to reattach the CRT monitor temporarily until you have re-configured the system; preferably to 3840 x 2160 at 60 Hz, which is the Native Resolution Display mode.

The display modes shown below have been optimized at the factory.

*Table 2-3. Factory set display modes*

Timing	Refresh rate(Hz)
640 x 480	60 Hz, 67 Hz
720 x 400	70 Hz
800 x 600	60 Hz, 72 Hz, 75 Hz
832 x 624	75 Hz
1024 x 768	60 Hz, 70 Hz, 75 Hz
1280 x 720	60 Hz
1280 x 800	60 Hz
1280 x 1024	60 Hz, 75 Hz
1440 x 900	60 Hz
1600 x 900	60 Hz
1680 x 1050	60 Hz
1920 x 1080	60Hz
1920 x 1200	60Hz
2560 x 1440	60Hz,120Hz
3840 x 2160	60 Hz
3840 x 2160	120 Hz
480p	60 Hz
576p	50 Hz
720p	50 Hz, 60 Hz
1080p	50 Hz, 60 Hz, 120 Hz
2160p	60 Hz, 100 Hz, 120 Hz

---

## Understanding power management

Power management is invoked when the computer recognizes that you have not used your mouse or keyboard for a user-definable period. There are several states as described in the table below.

For optimal performance, switch off your monitor at the end of each working day, or whenever you expect to leave it unused for long periods during the day.

*Table 2-4.* Power indicator

State	Power Indicator	Screen	Restoring Operation
On	White	Normal	
Standby/Suspend	Amber	Blank	Press a key or move the mouse  There may be a slight delay before the image reappears. <b>Note:</b> Standby also occurs if there is no image output to the monitor.
Off	Off	Blank	Press the power button  There may be a slight delay before the image reappears.

---

## Caring for your monitor

Be sure to turn off the power before you perform any maintenance on the monitor.

### Do not:

- Apply water or liquid directly to your monitor.
- Use solvents or abrasives.
- Use flammable cleaning materials to clean your monitor or any other electrical equipment.
- Touch the screen area of your monitor with sharp or abrasive items. This type of contact may cause permanent damage to your screen.
- Use any cleaner which contains an anti-static solution or similar additives. This may harm the coating of the screen area.

### Do:

- Lightly dampen a soft cloth with water and use this to gently wipe the covers and the screen.
- Remove grease or finger marks with a damp cloth and a little mild detergent.

---

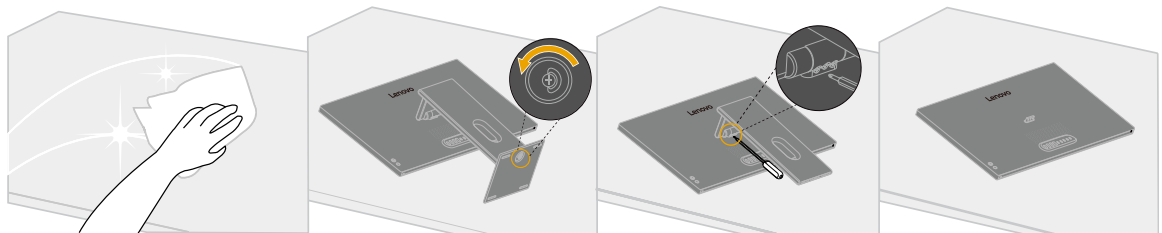
## Detaching the monitor base and stand

Step 1: Place the monitor on a soft and flat surface.

Step 2: Remove the base from the monitor with quick-release screw.

Step 3: Remove 3 screws from the stand with Long Handle Phillips Screwdriver.

Note: The screwdriver needs to be purchased by the user.



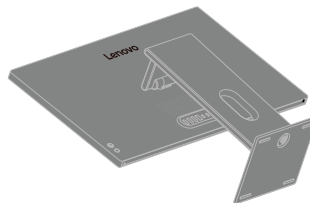
---

## Wall Mounting (Optional)

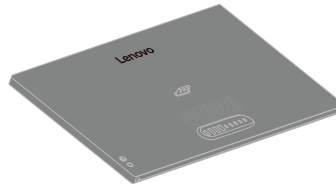
Refer to the instructions that come with the base mounting kit. To convert your OLED display from a desk-mounted to a wall-mounted display, do the following:

Step 1: Verify that the Power button is turned Off, then disconnect the power cord.

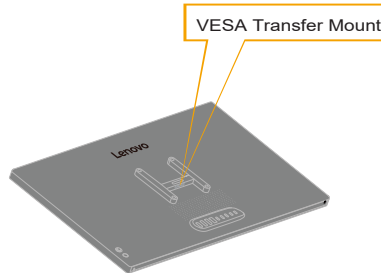
Step 2: Lay the OLED display face down on a towel or blanket.



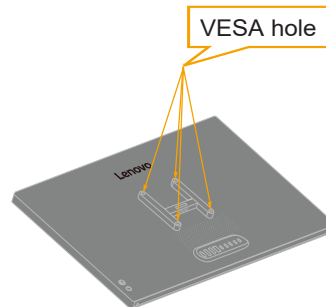
Step 3: Remove the base and stand from the monitor, refer to “Detaching the monitor base and stand”



Step 4: Mounting VESA Transfer Mount, 3 pieces mounting screw M4 x 10 mm



Step 5: Attach the mounting bracket from the VESA compatible wall mounting kit (100mm x100mm distance), VESA Mounting Screw M4 x 10 mm.



Step 6: Attach the OLED display to the wall, following the instructions in the wallmounting kit.

Note: For use only with UL or CSA or GS-listed wall mount bracket with minimum weight/load bearing capacity of 25.0 kg (55.1 lbs).

---

## Chapter 3. Reference information

This section contains monitor specifications, instructions to manually install the monitor driver, troubleshooting information, and service information.

---

### Monitor specifications

Table 3-1. Monitor specifications for type-model 67E5RAC2WW

Dimensions	Depth	184.3 mm (7.26 in.)
	Height	574.2 mm (22.61 in.)
	Width	611.0 mm (24.06 in.)
Panel	Size	26.5 in.
	Aspect ratio	16:9
Stand	Lift	110 mm
	Tilt	-5° to 22°
Weight	Weight with stand assembly	6.7 kg (14.8 lbs)
	Weight without stand assembly (For wall mount or VESA mount considerations - no cables)	4.5 kg (9.9 lbs)
VESA mount	Supported	100 mm x 100 mm (3.94 in. x 3.94 in.)
Image	Viewable image size	673.1 mm (26.5 inch)
	Maximum height	303.5 mm (13.01 inch)
	Maximum width	587.5 mm (23.13 inch)
	Pixel pitch	0.153 mm(0.01 inch)
Power input	Supply voltage	DC20 V
	Max supply current	20 A
Power input of the power supply unit	Supply voltage	100-240V AC 50-60Hz
	Max supply current	6 A
Power consumption	Normal operation	<310 W (max) <80 W (typical)
	Standby/Suspend	<0.5 W
	Off	<0.3 W

**Note:** Power consumption figures are for the monitor and the power supply combined

**Table 3-1.** Monitor specifications for type-model 67E5RAC2WW

Video input (HDMI)	Interface	HDMI
	Horizontal addressability	3840 pixels (max)
	Vertical addressability	2160 lines (max)
	Clock frequency	1200 MHz
Video input (DP)	Interface	DP
	Horizontal addressability	3840 pixels (max)
	Vertical addressability	2160 lines (max)
	Clock frequency	1200 MHz
Video input (USB4)	Interface	USB4
	Horizontal addressability	3840 pixels (max)
	Vertical addressability	2160 lines (max)
	Clock frequency	1200 MHz
Communications	VESA DDC	CI
Supported Display Modes	Horizontal frequency	30 kHz-280 KHz
	Vertical frequency	48 Hz-120 Hz
	Native Resolution	3840 x 2160 @ 60 Hz
Temperature	Operating	0° to 35° C (32° to 95° F)
	Storage	-20° to 60° C (-4° to 140° F)
	Shipping	-20° to 60° C (-4° to 140° F)
Humidity	Operating	8% to 80% non-condensing
	Storage	5% to 95% non-condensing
	Shipping	5% to 95% non-condensing

## Troubleshooting

If you have a problem setting up or using your monitor, you might be able to solve it yourself. Before calling your dealer or Lenovo, try the suggested actions that are appropriate to your problem.

*Table 3-2. Troubleshooting*

<b>Problem</b>	<b>Possible cause</b>	<b>Suggested action</b>	<b>Reference</b>
The words "Input not supported" are shown on the screen, and the power indicator is flashing green.	The system is set to a display mode which is not supported by the monitor.	If you are replacing an old monitor, reconnect it and adjust the display mode to within the specified range for your new monitor.  If using a Windows system, restart the system in safe mode, then select a supported display mode for your computer.  If these options do not work, contact the Support Center.	"Selecting a supported display mode" on page 2-9
The image quality is unacceptable.	The video signal cable is not connected with the monitor or system completely.	Be sure the signal cable is firmly plugged into the system and monitor.	"Connecting and turning on your monitor" on page 1-5
	The color settings may be incorrect.	Select another color setting from the OSD menu.	"Adjusting your monitor image" on page 2-4
The power indicator is not lit and there is no image.	<ul style="list-style-type: none"> <li>The monitor's power switch is not switched on.</li> <li>The power cord is loose or disconnected.</li> <li>There is no power at the outlet.</li> </ul>	<ul style="list-style-type: none"> <li>Be sure the power cord is connected properly.</li> <li>Be sure the outlet has power.</li> <li>Power on the monitor.</li> <li>Try using another power cord.</li> <li>Try using another electrical outlet.</li> </ul>	"Connecting and turning on your monitor" on page 1-5
Screen is blank and power indicator is amber.	The monitor is in Standby / Suspend mode.	<ul style="list-style-type: none"> <li>Press any key on the keyboard or move the mouse to restore operation.</li> <li>Check the Power Options settings on your computer.</li> </ul>	"Understanding power management" on page 2-10
The power indicator is orange, but there is no image.	The video signal cable is loose or disconnected from the system or monitor.	Be sure the video cable is connected with the system properly.	"Connecting and turning on your monitor" on page 1-5
	The monitor brightness and contrast are at the lowest setting.	Adjust the brightness and contrast setting on the OSD menu.	"Adjusting your monitor image" on page 2-4

Table 3-2. Troubleshooting

Problem	Possible cause	Suggested action	Reference
One or more of the pixels appear discolored.	This is a characteristic of the OLED technology and is not an OLED defect.	If there are more than five pixels missing, contact the Support Center.	Appendix A, "Service and Support" on page A-1
<ul style="list-style-type: none"> <li>Fuzzy lines in text or a blurry image.</li> <li>Horizontal or vertical lines through the image.</li> </ul>	<ul style="list-style-type: none"> <li>Image setup has not been optimized.</li> <li>Your system Display Properties setting have not been optimized.</li> </ul>	Adjust the resolution settings on your system to match the native resolution for this monitor: 3840 x 2160 at 60 Hz.	"Adjusting your monitor image" on page 2-4
		Perform automatic image setup. If automatic image setup does not help, perform manual image setup.	"Selecting a supported display mode" on page 2-9
		When working in the native resolution, you may find additional improvements by adjusting the Dots Per Inch (DPI) setting on your system.	See the Advanced section of your system's display properties.
Dolby Vision No Effect	The current Windows version is too old.	Dolby Vision is only applicable to Windows 11 systems with HEVC decoding. Please upgrade your Windows system to the latest version.	
Dolby Atmos No Effect	The current Windows version is too old.	Dolby Atmos is only applicable to Windows 11 systems. Please upgrade your Windows system to the latest version.	
Dolby Vision No Effect	Dolby Vision has compatibility limitations with AMD FreeSync Premium Pro.	For graphics cards other than the AMD 7000 series, you must set Screen Settings -> Media Sync/ FreeSync Premium Pro to Off in the OSD menu to experience Dolby Vision effects.	
Color Sync Mode Is Grayed Out and Cannot Be Selected	<ul style="list-style-type: none"> <li>Lenovo Pro 9i Aura Edition (16", 11)</li> <li>Yoga Pro 9i Aura Edition (16", 11)</li> <li>YOGA Pro 16 Aura Edition IPH11</li> </ul> A notebook-specific feature.	This feature can be enabled only when these three notebook models are used.	
Noise Reduction Mode Not Working or Malfunctioning	<ul style="list-style-type: none"> <li>Lenovo Pro 9i Aura Edition (16", 11)</li> <li>Yoga Pro 9i Aura Edition (16", 11)</li> <li>YOGA Pro 16 Aura Edition IPH11</li> </ul> A notebook-specific feature.	This feature can be enabled only when these three notebook models are used.	

## Manually installing the monitor driver

Below are steps for manually installing the monitor driver in Microsoft Windows 10, Microsoft Windows 11.

1. Turn off the computer, all attached devices.
2. Ensure that the monitor is connected correctly.
3. Turn on the monitor and then the system unit. Allow your computer to start the Windows operating system.
4. From the Lenovo website [https://pcsupport.lenovo.com/solutions/yoga\\_pro\\_27ud\\_10](https://pcsupport.lenovo.com/solutions/yoga_pro_27ud_10), find the corresponding monitor driver and download it to a PC to which this monitor is connected (such as a desktop).
5. Right-click the Windows **Start** button on the desktop, then click **Device Manager**, and double click **Monitor**.
6. Double-click **Generic Monitor**.
7. Click the **Driver** tab.
8. Click **Update Driver**, and then click **Browse Computer to find the driver**.
9. Click **Let me pick from a list of available drivers on my computer**.
10. Click the **Have Disk...** button. By clicking the **Browse** button, browse and point to the following path: **X:\Monitor Drivers\Windows** (where X indicates "the folder in which the downloaded driver is located" (such as a desktop)).
11. Select **Yoga Pro 27UD-10.inf** file, Click **Open** button. Click **OK** button.
12. In the new window, select **Yoga Pro 27UD-10** and click **Next**.
13. After the installation is complete, delete all downloaded files and close all Windows.
14. Restart the system. The system will automatically select the refresh rate and the corresponding color matching profile.

**Note:** On OLED monitors, unlike CRTs, a faster refresh rate does not improve display quality. Lenovo recommends using either 3840 x 2160 at a refresh rate of 60 Hz, or 640 x 480 at a refresh rate of 60 Hz.

## Getting further help

If you still can't solve your problem, please contact the Lenovo Support Center. For more information on contacting the Support Center, please see Appendix A."Service and Support"on page A-1

---

## Appendix A. Service and Support

The following information describes the technical support that is available for your product, during the warranty period or throughout the life of your product. Refer to the Lenovo Limited Warranty for a full explanation of Lenovo warranty terms.

---

### Registering your option

Register to receive product service and support updates, as well as free and discounted computer accessories and content. Go to: <http://www.lenovo.com/register>

---

### Online technical support

Online technical support is available during the lifetime of a product at: <http://www.lenovo.com/support>

Product replacement assistance or exchange of defective components also is available during the warranty period. In addition, if your option is installed in a Lenovo computer, you might be entitled to service at your location. A Lenovo technical support representative can help you determine the best alternative.

---

### Quebec Disclaimer

#### **Quebec Disclaimer: English**

#### **IMPORTANT NOTICE FOR QUEBEC CONSUMERS:**

In regard to section 79.18 of Quebec's Regulation respecting the application of the Consumer Protection Act, Lenovo in no way guarantees the availability of (a) replacement parts; (b) repair services; and (c) information necessary to maintain or repair the goods. For up-to-date information on the technical support and parts available for your purchase, please consult <https://support.lenovo.com/ca/en>

#### **Quebec Disclaimer: Canadian French**

#### **AVIS IMPORTANT POUR LES CONSOMMATEURS DU QUÉBEC:**

En ce qui concerne l'article 79.18 du Règlement d'application de la Loi sur la protection du consommateur du Québec, Lenovo ne garantit en aucune façon la disponibilité des éléments suivants : (a) les pièces de rechange; (b) les services de réparation; et (c) les renseignements nécessaires à l'entretien à la réparation du bien. Pour obtenir des renseignements à jour sur le soutien technique et les pièces disponibles pour votre achat, veuillez consulter <https://support.lenovo.com/ca/fr>.

---

### Telephone technical support

Installation and configuration support through the Customer Support Center will be available until 90 days after the option has been withdrawn from marketing. After that time, the support is cancelled, or made available for a fee, at Lenovo's discretion. Additional support is also available for a nominal fee.

Before contacting a Lenovo technical support representative, please have the following information available: option name and number, proof of purchase, computer manufacturer, model, serial number and manual, the exact wording of any error message, description of the problem, and the hardware and software configuration information for your system.

Your technical support representative might want to walk you through the problem while you are at your computer during the call.

Telephone numbers are subject to change without notice. The most up-to-date telephone list for Lenovo Support is always available at: <http://consumersupport.lenovo.com>

<b>Country or Region</b>	<b>Telephone Number</b>
Argentina	0800-666-0011 (Spanish, English)
Australia	1-800-041-267 (English)
Austria	0810-100-654 (For local rate) (German)
Belgium	Warranty service and support: 02-339-36-11 (Dutch, French)
Bolivia	0800-10-0189 (Spanish)

---

## Appendix B. Notices

Lenovo may not offer the products, services, or features discussed in this document in all countries. Consult your local Lenovo representative for information on the products and services currently available in your area. Any reference to a Lenovo product, program, or service is not intended to state or imply that only that Lenovo product, program, or service may be used. Any functionally equivalent product, program, or service that does not infringe any Lenovo intellectual property right may be used instead.

However, it is the user 's responsibility to evaluate and verify the operation of any other product, program, or service.

Lenovo may have patents or pending patent applications covering subject matter described in this document. The furnishing of this document does not give you any license to these patents. You can send license inquiries, in writing, to:

*Lenovo (United States), Inc.  
1009 Think Place - Building One  
Morrisville, NC 27560  
U.S.A.  
Attention: Lenovo Director of Licensing*

LENOVO PROVIDES THIS PUBLICATION "AS IS" WITHOUT WARRANTY OF ANY KIND, EITHER EXPRESS OR IMPLIED, INCLUDING, BUT NOT LIMITED TO, THE IMPLIED WARRANTIES OF NON-INFRINGEMENT, MERCHANTABILITY OR FITNESS FOR A PARTICULAR PURPOSE. Some jurisdictions do not allow disclaimer of express or implied warranties in certain transactions, therefore, this statement may not apply to you.

This information could include technical inaccuracies or typographical errors. Changes are periodically made to the information herein; these changes will be incorporated in new editions of the publication. Lenovo may make improvements and/or changes in the product(s) and/or the program(s) described in this publication at any time without notice.

The products described in this document are not intended for use in implantation or other life support applications where malfunction may result in injury or death to persons. The information contained in this document does not affect or change Lenovo product specifications or warranties. Nothing in this document shall operate as an express or implied license or indemnity under the intellectual property rights of Lenovo or third parties. All information contained in this document was obtained in specific environments and is presented as an illustration. The result obtained in other operating environments may vary.

Lenovo may use or distribute any of the information you supply in any way it believes appropriate without incurring any obligation to you.

Any references in this publication to non-Lenovo Web sites are provided for convenience only and do not in any manner serve as an endorsement of those Web sites. The materials at those Web sites are not part of the materials for this Lenovo product, and use of those Web sites is at your own risk.

Any performance data contained herein was determined in a controlled environment. Therefore, the result obtained in other operating environments may vary significantly. Some measurements may have been made on development-level systems and there is no guarantee that these measurements will be the same on generally available

systems. Furthermore, some measurements may have been estimated through extrapolation. Actual results may vary. Users of this document should verify the applicable data for their specific environment.

---

## Recycling information

Lenovo encourages owners of information technology (IT) equipment to responsibly recycle their equipment when it is no longer needed. Lenovo offers a variety of programs and services to assist equipment owners in recycling their IT products. For information on recycling Lenovo products, go to:

<http://www.lenovo.com/recycling>

環境配慮に関して

本機器またはモニターの回収リサイクルについて

企業のお客様が、本機器が使用済みとなり廃棄される場合は、資源有効利用促進法の規定により、産業廃棄物として、地域を管轄する県知事あるいは、政令市長の許可を持った産業廃棄物処理業者に適正処理を委託する必要があります。また、弊社では資源有効利用促進法に基づき使用済みパソコンの回収および再利用・再資源化を行う「PC回収リサイクル・サービス」を提供しています。詳細は、

[https://www.lenovo.com/jp/ja/services\\_warranty/recycle/pcrecycle/](https://www.lenovo.com/jp/ja/services_warranty/recycle/pcrecycle/)

をご参照ください。

また、同法により、家庭で使用済みとなったパソコンのメーカー等による回収再資源化が2003年10月1日よりスタートしました。詳細は、

[https://www.lenovo.com/jp/ja/services\\_warranty/recycle/pcrecycle/](https://www.lenovo.com/jp/ja/services_warranty/recycle/pcrecycle/)

をご参照ください。

重金属を含む内部部品の廃棄処理について

本機器のプリント基板等には微量の重金属（鉛など）が使用されています。使用後は適切な処理を行うため、上記「本機器またはモニターの回収リサイクルについて」に従って廃棄してください。

### Collecting and recycling a disused Lenovo computer or monitor

If you are a company employee and need to dispose of a Lenovo computer or monitor that is the property of the company, you must do so in accordance with the Law for Promotion of Effective Utilization of Resources. Computers and monitors are categorized as industrial waste and should be properly disposed of by an industrial waste disposal contractor certified by a local government. In accordance with the Law for Promotion of Effective Utilization of Resources, Lenovo Japan provides, through its PC Collecting and Recycling Services, for the collecting, reuse, and recycling of disused computers and monitors. For details, visit the Lenovo Web site at [https://www.lenovo.com/jp/ja/services\\_warranty/recycle/pcrecycle/](https://www.lenovo.com/jp/ja/services_warranty/recycle/pcrecycle/). Pursuant to the Law for Promotion of Effective Utilization of Resources, the collecting and recycling of home-used computers and monitors by the manufacturer was begun on October 1, 2003. This service is provided free of charge for home-used computers sold after October 1, 2003. For details, visit the Lenovo Web site at [https://www.lenovo.com/jp/ja/services\\_warranty/recycle/personal/](https://www.lenovo.com/jp/ja/services_warranty/recycle/personal/).

### Disposing of Lenovo computer components

Some Lenovo computer products sold in Japan may have components that contain heavy metals or other environmental sensitive substances. To properly dispose of disused components, such as a printed circuit board or drive, use the methods described above for collecting and recycling a disused computer or monitor.

---

## Trademarks

The following terms are trademarks of Lenovo in the United States, other countries, or both:

Lenovo  
The Lenovo logo  
ThinkCenter  
ThinkPad  
ThinkVision

Microsoft, Windows, and Windows NT are trademarks of the Microsoft group of companies.

Other company, product, or service names may be trademarks or service marks of others.

---

## Power cords and power adapters

Use only the power cords and power adapters supplied by the product manufacture Do not use the ac power cord for other devices.