

AMD

AMD

The product images are for illustration purposes only. Actual product appearance, ports, keyboard layout, and accessories may vary by model.

- AMD Ryzen 5 220 (6C / 12T, 3.2 / 4.9GHz, 6MB L2 / 16MB L3)
- 1x 16GB SODIMM DDR5-5600
- 256GB SSD M.2 2242 PCIe 4.0x4 NVMe
- Integrated AMD Radeon 740M Graphics
- Windows 11 Pro, English (US) / English (UK)
- Case color - Arctic Grey
- 1-year, Courier or Carry-in

Premier Support - A direct 24x7x365 line to our most elite technicians.

- Advanced technical support, 24x7x365, in more than 100 markets
- Comprehensive hardware & OEM software support
- Single point of contact for simplified end-to-end case management
- Technical Account Managers for proactive relationship and escalation management
- Priority on service delivery and repair parts
- Lenovo Service Connect Portal for customized reporting and product support

Accidental Damage Protection - Protection of your PC from the unexpected.

Experience shows that a significant portion of devices may be damaged (and not covered under warranty) in the first three years. Lenovo's Accidental Damage Protection service covers accidents beyond the system warranty such as drops, spills, bumps and even electrical surges. Make sure your new device has maximum protection, avoid unplanned costs and get peace of mind.

Base Warranty - Included with the systems you purchase, default 1- or 3-year coverage window.

Warranty Extensions & Upgrades - Service and protection that's right for your circumstances.

- Pick Up & Return Courier
- Onsite Support
- Technician Installed Customer
- Replaceable Unit Service
- International Warranty Upgrade

Recommended Accessories United Kingdom



Lenovo Wired VoIP Headset 5000 (Teams)

4XD1R88995



Lenovo Essential Wireless Combo Keyboard & Mouse Gen2 Black-UK English

4X31R64490



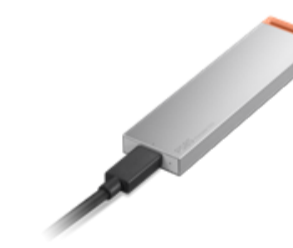
Lenovo 16" Laptop Everyday Backpack B510

4X41U80414



Lenovo Dual USB-C 65W GaN Charger

GOA6065WUK



Lenovo PS8S Portable SSD 4TB

4XB1T91892



Lenovo Charging GaN Dock

GOAE0065UK

>> [View More Accessories](#)

PERFORMANCE**Processor**

AMD Ryzen™ 5 220 (6C / 12T, 3.2 / 4.9GHz, 6MB L2 / 16MB L3)

AI PC Category

Non-AI PC

NPU

None

Graphics

Integrated AMD Radeon™ 740M Graphics

Chipset

AMD SoC Platform

Memory

1x 16GB SODIMM DDR5-5600

Memory Slots

Two DDR5 SODIMM slots, dual-channel capable

Max Memory^[1]

Up to 64GB DDR5-5600

Storage

256GB SSD M.2 2242 PCIe® 4.0x4 NVMe®

Storage Slot

Two M.2 slots • One M.2 2242 PCIe® 4.0 x4 slot • One M.2 2280 PCIe® 4.0 x4 slot

Max Storage Support^[2]

Up to two drives, 2x M.2 SSD • M.2 2242 SSD up to 2TB • M.2 2280 SSD up to 2TB

Card Reader

SD Card Reader

Audio Chip

High Definition (HD) Audio, Realtek® ALC3287 codec

Speakers

Stereo speakers, 2W x2, Dolby Audio™

Microphone

2x, Array

Camera

FHD 1080p + IR Hybrid with Privacy Shutter

Battery

48Wh

Power Adapter

65W USB-C® Slim (2-pin, Wall-mount)

Special Features

Modern Standby

DESIGN**Display**16" WUXGA (1920x1200) IPS 400nits Anti-glare, 45% NTSC, 60Hz^[3]**Touchscreen**

None

Screen-to-Body Ratio

90%

Color Calibration

No Color Calibration

Pen

Pen Not Supported

Keyboard

Backlit, English

Touchpad

Buttonless Mylar® surface multi-touch touchpad, supports Precision TouchPad (PTP), 75 x 120 mm (2.95 x 4.72 inches)

Dimensions (WxDxH)^[4]

356 x 253.5 x 17.5 mm (14.01 x 9.98 x 0.69 inches)

Weight^[5]

Starting at 1.7 kg (3.75 lbs)

Case Color

Arctic Grey

Case Material

Aluminium (Top), PC-ABS (Bottom)

Surface Treatment

Anodizing Sandblasting (Top), Texture (Bottom)

SOFTWARE**Operating System**

Windows® 11 Pro, English (US) / English (UK)

Bundled Software

Office Trial

CONNECTIVITY**WLAN + Bluetooth**

Wi-Fi® 7, 802.11be 2x2 + BT5.4

WWAN

WWAN Not Supported

Ethernet

100/1000M (RJ-45)

Standard Ports

- 1x USB-A (USB 5Gbps), Always On
- 1x USB-A (USB 5Gbps)
- 2x USB-C® (USB4® 40Gbps), with USB PD 45-65W and DisplayPort™ 1.4a
- 1x HDMI® 2.1, up to 4K/60Hz
- 1x Headphone / microphone combo jack (3.5mm)
- 1x Ethernet (RJ-45)
- 1x SD card reader

DockingVarious docking solutions supported via USB-C®. For more compatible docking solutions, please visit [Docking for ThinkBook® 16 G9 AHP](#)**SECURITY & PRIVACY****Security Chip**

Discrete TPM 2.0 Enabled

Physical Locks

Kensington Nano Security Slot™, 2.5 x 6 mm

Fingerprint Reader

Touch Style, Match-on-Chip, Integrated in Power Button

Other Security

- Camera privacy shutter
- IR camera for Windows® Hello (facial recognition)

SERVICE**Base Warranty**

1-year, Courier or Carry-in

Included Upgrade

None

ACCESSORIES**Bundled Accessories**

None

CERTIFICATIONS**Green Certifications**

- ENERGY STAR® 9.0
- EPEAT™ Gold Registered^[6]
- ErP Lot 6/26
- RoHS compliant
- TCO Certified, generation 10

Mil-Spec Test

MIL-STD-810H military test passed

Other Certifications

TÜV Rheinland® Low Blue Light (Software Solution)

MODEL**TopSeller** : Yes **EAN / UPC / JAN:** 199272126041**Announce Date:** 2025-12-05 **End of Support** : 2032-06-14**Note:**^[1] Maximum memory 64GB DDR5-5600 is only to test technical readiness of notebook. Available memory to sell would vary.^[2] The system supports dual SSD via two M.2 slots, but Lenovo offers only one SSD configuration with a second slot for user self-expansion. The max storage capacity is only technical readiness and may be different from current Lenovo storage offerings.^[3] IPS (in-plane switching) technology may refer to IPS, PLS, ADS, AHVA, AAS.^[4] The system dimensions may vary depending on configurations.

- Please refer to the official [Lenovo store website](#) or contact a local Lenovo sales representative or authorized business partner for current inventory and purchase options.
 - Lenovo reserves the right to change specifications without notice.
 - California Electronic Waste Recycling Fee In California, per state law, Lenovo charges an electronic waste recycling fee on this covered device at the time of sale of the product. For more information, go to: <https://www.calrecycle.ca.gov/Electronics/Consumer>
- To see more note information, please access the [web page](#).