

PERFORMANCE

Processor

Intel Core™ 5 210H, 8C (4P + 4E) / 12T, P-core 2.2 / 4.8GHz, E-core 1.6 / 3.6GHz, 12MB Intel® Smart Cache

Graphics

Integrated Intel® Graphics

Chipset

Intel® SoC Platform

Memory

1x 16GB SODIMM DDR5-5200

Memory Slots

Two DDR5 SODIMM slots, dual-channel capable

Max Memory^[1]

Up to 32GB DDR5-5200

Storage

512GB SSD M.2 2280 PCIe® 4.0x4 NVMe® Opal 2.0

Max Storage Support^[2]

One drive, up to 1TB M.2 2280 SSD

Card Reader

No card reader

Optical

None

Audio Chip

High Definition (HD) Audio, Realtek® ALC233-CG codec

Speakers

3Wx2

Camera

5.0MP

Microphone

2x, Array

Power Supply

90W 89% Adapter

DESIGN

Display^[3]

23.8" FHD (1920x1080) IPS Anti-glare 250nits, 99% sRGB, touch

Touchscreen

10-point Multi-touch

Keyboard

USB Calliope Keyboard, Black, German

Mouse

USB Calliope Mouse, Black

Expansion Slots

Two M.2 slots (one for WLAN, one for SSD)

Case Color

Luna Grey

Stand

Monitor Stand

Mounting

None

Wireless Charger

No Wireless Charger

Form Factor

AIO (23.8 inches)

Dimensions (WxDxH)^[4]

540 x 192 x 431 mm (21.25 x 7.56 x 16.97 inches)

Weight^[5]

Around 6.0 kg (13.23 lbs)

CONNECTIVITY

WLAN + Bluetooth

Intel® Wi-Fi® 6 AX201, 802.11ax 2x2 + BT5.2

WWAN

WWAN Not Supported

Ethernet

Integrated 100/1000M

Rear Ports

- 1x USB-A (USB 10Gbps / USB 3.2 Gen 2)
- 2x USB-A (Hi-Speed USB / USB 2.0)
- 1x HDMI®-in 1.4
- 1x HDMI®-out 2.1 TMDS
- 1x Ethernet (RJ-45)
- 1x power connector

Left Ports

- 1x USB-C® (USB 10Gbps / USB 3.2 Gen 2), data transfer and 15W charging
- 1x headphone / microphone combo jack (3.5mm)

SECURITY & PRIVACY

Security Chip

Firmware TPM 2.0 integrated in SoC

Physical Locks

Kensington Security Slot™, 3 x 7 mm^[6]

Chassis Intrusion Switch

No chassis intrusion switch

MANAGEABILITY

System Management

None

SERVICE

Base Warranty

1-year, Courier or Carry-in

Included Upgrade

1Y Onsite from 1Y Depot WHB (CPN)

CERTIFICATIONS

Green Certifications

- ENERGY STAR® 8.0
- EPEAT™ Gold Registered
- ErP Lot 3/7
- GREENGUARD®
- RoHS / WEEE / REACH

Other Certifications

- TÜV Rheinland® Flicker Free
- TÜV Rheinland® Low Blue Light
- TÜV Rheinland® Ultra Low Noise

SOFTWARE

Operating System

Windows® 11 Pro, German

Bundled Software

None

MODEL

TopSeller : Yes EAN / UPC / JAN: 0198156862433

Announce Date: 2025-01-24 End of Support : 2031-03-30

Note:

[1] The max memory is based on the test results with current Lenovo memory offerings.

[2] The max capacity of each disk type is based on the test results with current Lenovo storage offerings.

[3] IPS (in-plane switching) technology may refer to IPS, PLS, ADS, AHVA, AAS.

[4] The system dimensions may vary depending on configurations.

[5] The system weight is approximate and based on results in Lenovo lab, which varies depending on the source of component, variance of the distribution of each component, and manufacturing process. It may not be the exact weight for each specific model.

[6] The Kensington security slot is standard on models manufactured on or after February 10, 2025. For models manufactured before this date, the Kensington security slot may not be configured, please refer to the actual product.

- Please refer to the official [Lenovo store website](#) or contact a local Lenovo sales representative or authorized business partner for current inventory and purchase options.
- Lenovo reserves the right to change specifications without notice.

Premier Support - A direct 24x7x365 line to our most elite technicians.



Advanced technical support, 24x7x365, in more than 100 markets



Technical Account Managers for proactive relationship and escalation management



Comprehensive hardware & OEM software support



Priority on service delivery and repair parts



Single point of contact for simplified end-to-end case management



Lenovo Service Connect Portal for customized reporting and product support

Accidental Damage Protection - Protection of your PC from the unexpected.

Experience shows that a significant portion of devices may be damaged (and not covered under warranty) in the first three years. Lenovo's Accidental Damage Protection service covers accidents beyond the system warranty such as drops, spills, bumps and even electrical surges. Make sure your new device has maximum protection, avoid unplanned costs and get peace of mind.

Base Warranty - Included with the systems you purchase, default 1- or 3-year coverage window.

Warranty Extensions & Upgrades - Service and protection that's right for your circumstances.

- Pick Up & Return Courier
- Onsite Support
- Technician Installed Customer
- Replaceable Unit Service
- International Warranty Upgrade

Lenovo may not offer the products, services or features discussed in this document in all regions. Lenovo may withdraw an offering at any time. Information is subject to change without notice. Consult your local representative for information on offerings available in your area. Lenovo reserves the right to change specifications or other product information without notice. Lenovo is not responsible for photographic or typographical errors. Lenovo provides this publication "as is" without warranty of any kind, either express or implied, including the implied warranties of merchantability or fitness for a particular purpose.

Recommended Accessories

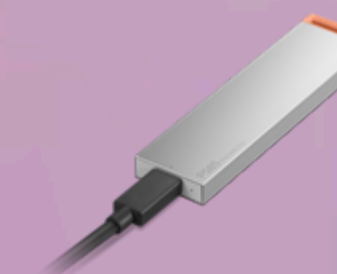
 United Kingdom



Lenovo Wired VoIP Headset (Teams)
4XD1M45626



Lenovo 350 Bluetooth Silent Mouse (Fan Edition - Argentina) GY51U71763



Lenovo PS8S Portable SSD 4TB 4XB1T91892

Please click [here](#) to view the full list of accessories.

Lenovo

PSREF
Product Specifications
Reference