

PERFORMANCE**Processor**

AMD Ryzen™ AI 7 350 (8C / 16T, 2.0 / 5.0GHz, 8MB L2 / 16MB L3)

AI PC CategoryCopilot+ PC^[1]**NPU**Integrated AMD Ryzen™ AI, up to 50 TOPS^[2]**Graphics**

Integrated AMD Radeon™ 860M Graphics

Chipset

AMD SoC Platform

Memory

1x 16GB SODIMM DDR5-5600

Memory Slots

Two DDR5 SODIMM slots, dual-channel capable

Max Memory^[3]

Up to 32GB DDR5-5600

Storage

512GB SSD M.2 2280 PCIe® 4.0x4 NVMe® Opal

Max Storage Support^[4]

- Up to two drives, 2x M.2 SSD • M.2 2280 SSD up to 1TB • The second M.2 SSD slot is only for customer self-upgrade^[5]
- To install a second SSD storage, additional thermal pad is required.

Card Reader

No card reader

Optical

None

Audio Chip

High Definition (HD) Audio, Realtek® ALC3341 codec

Speakers

3Wx2, HARMAN

Camera

5.0MP + IR

Microphone

2x, Array

Power Supply

135W 90% Adapter

DESIGN**Display^[6]**

23.8" FHD (1920x1080) IPS Anti-glare 250nits, 99% sRGB

Touchscreen

None

Keyboard

USB, Calliope, Black, German

Mouse

USB Calliope Mouse, Black

Expansion SlotsThree M.2 slots (one for WLAN, two for SSD)^[5]**Case Color**

Luna Grey

Stand

Monitor Stand

Mounting

None

Wireless Charger

Wireless Charger

Form Factor

AIO (23.8 inches)

Dimensions (WxDxH)^[7]

539.5 x 192.1 x 431.17 mm (21.24 x 7.56 x 16.98 inches)

Weight^[8]

Around 6.0 kg (13.23 lbs)

CONNECTIVITY**WLAN + Bluetooth**

Realtek® Wi-Fi® 6 RTL8852BE, 802.11ax 2x2 + BT5.2

WWAN

WWAN Not Supported

Ethernet

Integrated 100/1000M

Rear Ports

- 1x USB-A (USB 10Gbps / USB 3.2 Gen 2)
- 2x USB-A (Hi-Speed USB / USB 2.0)
- 1x HDMI®-in 1.4
- 1x HDMI®-out 2.1 TMDS
- 1x Ethernet (RJ-45)
- 1x power connector

Left Ports

- 1x USB-C® (USB 10Gbps / USB 3.2 Gen 2), data transfer and 15W charging
- 1x headphone / microphone combo jack (3.5mm)

SECURITY & PRIVACY**Security Chip**

Firmware TPM 2.0 integrated in SoC

Physical Locks

Kensington Security Slot™

Chassis Intrusion Switch

No chassis intrusion switch

MANAGEABILITY**System Management**

None

SERVICE**Base Warranty**

1-year, Courier or Carry-in

Included Upgrade

1Y Onsite from 1Y Depot WHB (CPN)

CERTIFICATIONS**Green Certifications**

- ENERGY STAR® 9.0
- EPEAT™ Gold Registered
- ErP Lot 3/7
- GREENGUARD®
- RoHS / WEEE / REACH

Other Certifications

- TÜV Rheinland® Flicker Free
- TÜV Rheinland® Low Blue Light
- TÜV Rheinland® Ultra Low Noise

SOFTWARE**Operating System**

Windows® 11 Pro, German

Bundled Software

None

MODEL

TopSeller : Yes EAN / UPC / JAN: 0199271345498

Announce Date: 2025-07-30 End of Support : 2032-01-09

Note:

[1] Copilot+ PCs have at least 16GB RAM, 256GB storage, and a NPU that runs 40+ TOPs to run the latest AI tools build-in latest Windows 11 to accelerate productivity and creativity.

[2] Only for the models with AMD Ryzen AI 5 340 or AMD Ryzen AI 7 350 processor.

[3] The max memory is based on the test results with current Lenovo memory offerings.

[4] The max capacity of each disk type is based on the test results with current Lenovo storage offerings.

[5] The second M.2 SSD slot is only for customer self-upgrade purpose. The second SSD hard drive, additional thermal pad is sold separately.

[6] IPS (in-plane switching) technology may refer to IPS, PLS, ADS, AHVA, AAS.

[7] The system dimensions may vary depending on configurations.

[8] The system weight is approximate and based on results in Lenovo lab, which varies depending on the source of component, variance of the distribution of each component, and manufacturing process. It may not be the exact weight for each specific model.

- Please refer to the official [Lenovo store website](#) or contact a local Lenovo sales representative or authorized business partner for current inventory and purchase options.
- Lenovo reserves the right to change specifications without notice.

Premier Support - A direct 24x7x365 line to our most elite technicians.



Advanced technical support, 24x7x365, in more than 100 markets



Technical Account Managers for proactive relationship and escalation management



Comprehensive hardware & OEM software support



Priority on service delivery and repair parts



Single point of contact for simplified end-to-end case management



Lenovo Service Connect Portal for customized reporting and product support

Accidental Damage Protection - Protection of your PC from the unexpected.

Experience shows that a significant portion of devices may be damaged (and not covered under warranty) in the first three years. Lenovo's Accidental Damage Protection service covers accidents beyond the system warranty such as drops, spills, bumps and even electrical surges. Make sure your new device has maximum protection, avoid unplanned costs and get peace of mind.

Base Warranty - Included with the systems you purchase, default 1- or 3-year coverage window.

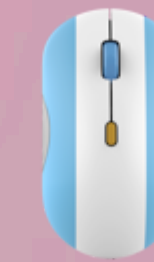
Warranty Extensions & Upgrades - Service and protection that's right for your circumstances.

- Pick Up & Return Courier
- Onsite Support
- Technician Installed Customer
- Replaceable Unit Service
- International Warranty Upgrade

Lenovo may not offer the products, services or features discussed in this document in all regions. Lenovo may withdraw an offering at any time. Information is subject to change without notice. Consult your local representative for information on offerings available in your area. Lenovo reserves the right to change specifications or other product information without notice. Lenovo is not responsible for photographic or typographical errors. Lenovo provides this publication "as is" without warranty of any kind, either express or implied, including the implied warranties of merchantability or fitness for a particular purpose.

Recommended Accessories

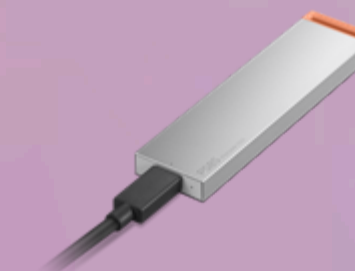
 United Kingdom



Lenovo 350 Bluetooth Silent Mouse (Fan Edition - Argentina) GY51U71763



Lenovo Analog In-Ear Headphones Gen II Bulk Package (20pcs) 4XD1T54899



Lenovo PS8S Portable SSD 4TB 4XB1T91892

Please click [here](#) to view the full list of accessories.

Lenovo

PSREF
Product Specifications
Reference