

PERFORMANCE

Processor

Intel Core™ i7-14700, 20C (8P + 12E) / 28T, Max Turbo up to 5.4GHz, P-core 2.1 / 5.3GHz, E-core 1.5 / 4.2GHz, 33MB Intel® Smart Cache

AI PC Category^[1]

AI-Ready Workstations

Processor Sockets

1x FCLGA1700

Integrated Graphics

Integrated Intel® UHD Graphics 770

Discrete Graphics

None

Chipset

Intel® W680 Chipset

Memory

1x 32GB SODIMM DDR5-4800 Non-ECC

Memory Slots

Four DDR5 SODIMM slots, dual-channel capable

Max Memory^[2]

Up to 192GB (4x 48GB DDR5 SODIMM)

PCIe NVMe Controller

Integrated NVMe® controller

PCIe NVMe Drive

1x 512GB SSD M.2 2280 PCIe® 4.0x4 Performance NVMe® Opal

SATA Controller

Integrated SATA controller

SATA/SAS Drive

None

Audio Chip

High Definition (HD) Audio, Realtek® ALC897-Q codec

Power Supply

170W 90% Adapter

DESIGN

Keyboard

USB Traditional Keyboard, Black, German

Mouse

USB Calliope Mouse, Black

Dust Filter

None

Dimensions (WxDxH)^[3]

87 x 223 x 202 mm (3.43 x 8.78 x 7.95 inches)

Weight^[4]

3.6 kg (7.94 lbs, maximum configuration)

CONNECTIVITY

Onboard Ethernet

Intel® I225-LM + I210-AT, 2x RJ-45, 2.5GbE + GbE

Optional Ethernet

None

WLAN + Bluetooth

None

Front Ports

- 2x Thunderbolt™ 4
- 1x USB-A (USB 10Gbps / USB 3.2 Gen 2)
- 1x headphone / microphone combo jack (3.5mm)

Rear Ports^[5]

- 4x USB-A (USB 10Gbps / USB 3.2 Gen 2)
- 3x DisplayPort™ 1.2
- 1x Ethernet (2.5GbE RJ-45)
- 1x Ethernet (GbE RJ-45)

Optional Rear Ports (configured)

None

SECURITY & PRIVACY

Security Chip

Discrete TPM 2.0, TCG certified, FIPS 140-2 certified

Physical Locks

Kensington Security Slot™, 3 x 7 mm

Chassis Intrusion Switch

Chassis Intrusion Switch

MANAGEABILITY

System Management^[6]

Intel® vPro® Enterprise with Intel® AMT 16

SERVICE

Base Warranty

3-year, Onsite

Included Upgrade

1Y Premier Support from 3Y Onsite Windchill bundles (CPN)

CERTIFICATIONS

ISV Certifications

Please visit [ISV certifications for Lenovo® Workstations](#)

Mil-Spec Test

MIL-STD-810H military test passed

SOFTWARE

Operating System

Windows® 11 Pro, German

Bundled Software

None

MODEL

TopSeller : Yes EAN / UPC / JAN: 0199274204266
 Announce Date: 2025-12-13 End of Support : 2031-05-24



Product image is a sample, it may not match the real color of this model
 Note:

[1] With scalable configurations of higher-performance CPUs and professional NVIDIA RTX GPUs, in addition to advantage of the same modern AI PC technology, AI-Ready workstation power the demanding AI consumption & development workflows.

[2] The max memory is based on the test results with current Lenovo memory offerings.

[3] The system dimensions may vary depending on configurations.

[4] The system weight is approximate and based on results in Lenovo lab, which varies depending on the source of component, variance of the distribution of each component, and manufacturing process. It may not be the exact weight for each specific model.

[5] For video ports on discrete graphics, please see graphics section.

[6] Intel vPro offers a superset of DASH's defined capabilities.

- Please refer to the official [Lenovo store website](#) or contact a local Lenovo sales representative or authorized business partner for current inventory and purchase options.
- Lenovo reserves the right to change specifications without notice.

Premier Support - A direct 24x7x365 line to our most elite technicians.



Advanced technical support, 24x7x365, in more than 100 markets



Technical Account Managers for proactive relationship and escalation management



Comprehensive hardware & OEM software support



Priority on service delivery and repair parts



Single point of contact for simplified end-to-end case management



Lenovo Service Connect Portal for customized reporting and product support

Accidental Damage Protection - Protection of your PC from the unexpected.

Experience shows that a significant portion of devices may be damaged (and not covered under warranty) in the first three years. Lenovo's Accidental Damage Protection service covers accidents beyond the system warranty such as drops, spills, bumps and even electrical surges. Make sure your new device has maximum protection, avoid unplanned costs and get peace of mind.

Base Warranty - Included with the systems you purchase, default 1- or 3-year coverage window.

Warranty Extensions & Upgrades - Service and protection that's right for your circumstances.

- Pick Up & Return Courier
- Onsite Support
- Technician Installed Customer
- Replaceable Unit Service
- International Warranty Upgrade

Lenovo may not offer the products, services or features discussed in this document in all regions. Lenovo may withdraw an offering at any time. Information is subject to change without notice. Consult your local representative for information on offerings available in your area. Lenovo reserves the right to change specifications or other product information without notice. Lenovo is not responsible for photographic or typographical errors. Lenovo provides this publication "as is" without warranty of any kind, either express or implied, including the implied warranties of merchantability or fitness for a particular purpose.

Recommended Accessories

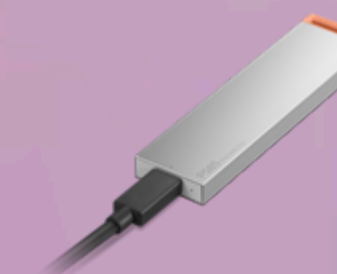
 United Kingdom



Lenovo Wired VoIP Headset (Teams)
4XD1M45626



Lenovo 350 Bluetooth Silent Mouse (Fan Edition - Argentina) GY51U71763



Lenovo PS8S Portable SSD 4TB 4XB1T91892

Please click [here](#) to view the full list of accessories.

Lenovo

PSREF
Product Specifications
Reference