

Lenovo ThinkBook 16p Gen 6 Hardware Maintenance Manual

Lenovo
ThinkBook



Lenovo

First Edition (May 2025)

© Copyright Lenovo 2025.

Contents

About this manual iii

Chapter 1. Safety information 1

General safety	1
Electrical safety	1
Safety inspection guide	2
Handling devices that are sensitive to electrostatic discharge	3
Grounding requirements	4
Safety notices (multilingual translations)	4

Chapter 2. General checkout 21

What to do first	21
CRU list	22

Chapter 3. Identifying FRUs (CRUs) 23

Locate FRUs and CRUs	23
--------------------------------	----

Chapter 4. Removing a FRU or CRU 27

Service tools	27
General guidelines	27
Handling thermal interface materials	28
Type, quantity, and areas of thermal interface materials application on the heat sink	28
Areas on the system board where thermal interface materials are applied	29
Remove the lower case	29
Remove the battery pack	30
Remove the solid-state drives	31
Remove the 2280 solid-state drive (for ThinkBook 16p G6 IAX)	31
Remove the 2242 solid-state drive	33
Remove the DNPU (for ThinkBook 16p G6 IAX)	35
Remove the Wi-Fi card	36
Remove the memory shielding and the memory module	38
Remove the HDMI bracket	39
Remove the DC-in bracket	40
Remove the thermal module	41
Remove the touchpad board cable	44

Remove the forcepad board cables (for ThinkBook 16p G6 IAX)	45
Remove the coin-cell battery	46
Remove the USB-A bracket	47
Remove the I/O board and the bracket	48
Remove the fingerprint sensor module (for ThinkBook 16p G6 IAX)	50
Remove the power button and the power cable (for ThinkBook 16p G6 ADR)	52
Remove the system board and the I/O board cable	53
Write key product information to a replacement system board	56
Remove the speakers (for ThinkBook 16p G6 IAX)	57
Remove the woofers (near the battery)	57
Remove the tweeters (under the system board)	58
Remove the thermal fin	59
Remove the hinge cap	60
Remove the LCD module	62
Remove the upper case (with keyboard)	65
Disassemble the LCD module	65
Remove the LCD bezel	65
Remove the LCD panel	66
Remove the camera shutter	68
Remove the ALS rubber (for ThinkBook 16p G6 IAX)	68
Remove the microphone rubbers	69
Remove the IR sponges (for ThinkBook 16p G6 IAX)	70
Remove the camera board	71

Appendix A. Label locations 73

Appendix B. Artworks for laser etched labels (for ThinkBook 16p G6 IAX) 77

Appendix C. Artworks for laser etched labels (for ThinkBook 16p G6 ADR) 81

Trademarks	lxxxiii
----------------------	---------

About this manual

This manual contains service and reference information for the following Lenovo products.

Machine	Machine type (MT)
ThinkBook 16p G6 IAX	21R0
ThinkBook 16p G6 IAX D1	
ThinkBook 16p G6 ADR	21U0

Important:

- It is recommended that these products be repaired by trained service technicians. For customers electing to repair their own Lenovo products, please follow all instructions carefully.
- Before servicing a Lenovo product, be sure to read all the information under Chapter 1 “Safety information” on page 1.

Chapter 1. Safety information

This chapter presents the following safety information that you need to be familiar with before you service a Lenovo notebook computer.

General safety

Follow these rules to ensure general safety:

- Observe good housekeeping in the area of the machines during and after maintenance.
- When lifting any heavy object:
 1. Make sure that you can stand safely without slipping.
 2. Distribute the weight of the object equally between your feet.
 3. Use a slow lifting force. Never move suddenly or twist when you attempt to lift.
 4. Lift by standing or by pushing up with your leg muscles; this action removes the strain from the muscles in your back. *Do not attempt to lift any object that weighs more than 16 kg (35 lb) or that you think is too heavy for you.*
- Do not perform any action that causes hazards to the customer, or that makes the equipment unsafe.
- Before you start the machine, make sure that other people are not in a hazardous position.
- Place removed covers and other parts in a safe place, away from all personnel, while you are servicing the machine.
- Keep your tool case away from walk areas so that other people will not trip over it.
- Do not wear loose clothing that can be trapped in the moving parts of a machine. Make sure that your sleeves are fastened or rolled up above your elbows. If your hair is long, fasten it.
- Insert the ends of your necktie or scarf inside clothing or fasten it with a non-conductive clip, about 8 centimeters (3 inches) from the end.
- Do not wear jewelry, chains, metal-frame eyeglasses, or metal fasteners for your clothing.

Attention: Metal objects are good electrical conductors.

- Wear safety glasses when you are hammering, drilling, soldering, cutting wire, attaching springs, using solvents, or working in any other conditions that might be hazardous to your eyes.
- After service, reinstall all safety shields, guards, labels, and ground wires. Replace any safety device that is worn or defective.
- Reinstall all covers correctly before returning the machine to the customer.
- Fan louvers on the machine help to prevent overheating of internal components. Do not obstruct fan louvers or cover them with labels or stickers.

Electrical safety

Observe the following rules when working on electrical equipment.

Important: Use only approved tools and test equipment. Some hand tools have handles covered with a soft material that does not insulate you when working with live electrical currents. Many customers have, near their equipment, rubber floor mats that contain small conductive fibers to decrease electrostatic discharges. Do not use this type of mat to protect yourself from electrical shock.

- Find the room emergency power-off (EPO) switch, disconnecting switch, or electrical outlet. If an electrical accident occurs, you can then operate the switch or unplug the power cord quickly.
- Do not work alone under hazardous conditions or near equipment that has hazardous voltages.
- Disconnect all power before:
 - Performing a mechanical inspection
 - Working near power supplies
 - Removing or installing main units

- Before you start to work on the machine, unplug the power cord. If you cannot unplug it, ask the customer to power-off the wall box that supplies power to the machine, and to lock the wall box in the off position.
- If you need to work on a machine that has *exposed* electrical circuits, observe the following precautions:
 - Ensure that another person, familiar with the power-off controls, is near you.

Attention: Another person must be there to switch off the power, if necessary.

- Use only one hand when working with powered-on electrical equipment; keep the other hand in your pocket or behind your back.

Attention: An electrical shock can occur only when there is a complete circuit. By observing the above rule, you may prevent a current from passing through your body.

- When using testers, set the controls correctly and use the approved probe leads and accessories for that tester.
- Stand on suitable rubber mats (obtained locally, if necessary) to insulate you from grounds such as metal floor strips and machine frames.

Observe the special safety precautions when you work with very high voltages; Instructions for these precautions are in the safety sections of maintenance information. Use extreme care when measuring high voltages.

- Regularly inspect and maintain your electrical hand tools for safe operational condition.
- Do not use worn or broken tools and testers.
- *Never assume* that power has been disconnected from a circuit. First, *check* that it has been powered off.
- Always look carefully for possible hazards in your work area. Examples of these hazards are moist floors, non-grounded power extension cables, power surges, and missing safety grounds.
- Do not touch live electrical circuits with the reflective surface of a plastic dental mirror. The surface is conductive; such touching can cause personal injury and machine damage.
- Do not service the following parts *with the power on* when they are removed from their normal operating places in a machine:
 - Power supply units
 - Pumps
 - Blowers and fans
 - Motor generators
 - Similar units as listed above
 This practice ensures correct grounding of the units.
- If an electrical accident occurs:
 - Use caution; do not become a victim yourself.
 - Switch off power.
 - Send another person to get medical aid.

Safety inspection guide

The purpose of this inspection guide is to assist you in identifying potentially unsafe conditions. As each machine was designed and built, required safety items were installed to protect users and service technicians from injury. This guide addresses only those items. You should use good judgment to identify potential safety hazards due to attachment of non-Lenovo features or options not covered by this inspection guide.

If any unsafe conditions are present, you must determine how serious the apparent hazard could be and whether you can continue without first correcting the problem.

Consider these conditions and the safety hazards they present:

- Electrical hazards, especially primary power (primary voltage on the frame can cause serious or fatal electrical shock)
- Explosive hazards, such as a damaged cathode ray tube (CRT) face or a bulging capacitor
- Mechanical hazards, such as loose or missing hardware

To determine whether there are any potentially unsafe conditions, use the following checklist at the beginning of every service task. Begin the checks with the power off, and the power cord disconnected.

Checklist:

1. Check exterior covers for damage (loose, broken, or sharp edges).
2. Power off the computer. Disconnect the power cord.
3. Check the power cord for:
 - a. A third-wire ground connector is in good condition. Use a meter to measure third-wire ground continuity for 0.1 ohm or less between the external ground pin and the frame ground.
 - b. The power cord should be the authorized type specified for your computer. Go to: <http://www.lenovo.com/serviceparts-lookup>
 - c. Insulation must not be frayed or worn.
4. Check for cracked or bulging batteries.
5. Remove the cover.
6. Check for any obvious non-Lenovo alterations. Use good judgment as to the safety of any non-Lenovo alterations.
7. Check inside the unit for any obvious unsafe conditions, such as metal filings, contamination, water or other liquids, or signs of fire or smoke damage.
8. Check for worn, frayed, or pinched cables.
9. Check that the power-supply cover fasteners (screws or rivets) have not been removed or tampered with.

Handling devices that are sensitive to electrostatic discharge

Any computer part containing transistors or integrated circuits (ICs) should be considered sensitive to electrostatic discharge (ESD). ESD damage can occur when there is a difference in charge between objects. Protect against ESD damage by equalizing the charge so that the machine, the part, the work mat, and the person handling the part are all at the same charge.

Notes:

1. Use product-specific ESD procedures when they exceed the requirements noted here.
2. Make sure that the ESD protective devices you use have been certified (ISO 9000) as fully effective.

When handling ESD-sensitive parts:

- Keep the parts in protective packages until they are inserted into the product.
- Avoid contact with other people.
- Wear a grounded wrist strap against your skin to eliminate static on your body.
- Prevent the part from touching your clothing. Most clothing is insulative and retains a charge even when you are wearing a wrist strap.
- Use a grounded work mat to provide a static-free work surface. The mat is especially useful when handling ESD-sensitive devices.
- Select a grounding system, such as those listed below, to provide protection that meets the specific service requirement.

- Note:** The use of a grounding system to guard against ESD damage is desirable but not necessary.
- Attach the ESD ground clip to any frame ground, ground braid, or green-wire ground.
 - When working on a double-insulated or battery-operated system, use an ESD common ground or reference point. You can use coax or connector-outside shells on these systems.
 - Use the round ground prong of the ac plug on ac-operated computers.

Grounding requirements

Electrical grounding of the computer is required for operator safety and correct system function. Proper grounding of the electrical outlet can be verified by a certified electrician.

Safety notices (multilingual translations)

The safety notices in this section are provided in the following languages:

- English
- Arabic
- Brazilian Portuguese
- French
- German
- Hebrew
- Japanese
- Korean
- Spanish
- Traditional Chinese



DANGER

Before the computer is powered on after FRU replacement, make sure that all screws, springs, and other small parts are in place and are not left loose inside the computer. Verify this by shaking the computer and listening for rattling sounds. Metallic parts or metal flakes can cause electrical short circuits.



DANGER

Some standby batteries contain a small amount of nickel and cadmium. Do not disassemble a standby battery, recharge it, throw it into fire or water, or short-circuit it. Dispose of the battery as required by local ordinances or regulations. Use only the battery in the appropriate parts listing. Use of an incorrect battery can result in ignition or explosion of the battery.



DANGER

The battery pack contains small amounts of nickel. Do not disassemble it, throw it into fire or water, or short-circuit it. Dispose of the battery pack as required by local ordinances or regulations. Use only the battery in the appropriate parts listing when replacing the battery pack. Use of an incorrect battery can result in ignition or explosion of the battery.



DANGER

The lithium battery can cause a fire, an explosion, or a severe burn. Do not recharge it, remove its polarized connector, disassemble it, heat it above 100°C (212°F), incinerate it, or expose its cell contents to water. Dispose of the battery as required by local ordinances or regulations. Use only the battery in the appropriate parts listing. Use of an incorrect battery can result in ignition or explosion of the battery.



DANGER

If the LCD breaks and the fluid from inside the LCD gets into your eyes or on your hands, immediately wash the affected areas with water for at least 15 minutes. Seek medical care if any symptoms from the fluid are present after washing.



DANGER

To avoid shock, do not remove the plastic cover that protects the lower part of the inverter card.



DANGER

Though the main batteries have low voltage, a short-circuited or grounded battery can produce enough current to burn personnel or combustible materials.



DANGER

Unless hot swap is allowed for the FRU being replaced, do as follows before removing it: power off the computer, unplug all power cords from electrical outlets, remove the battery pack, and disconnect any interconnecting cables.



قبل إعادة تشغيل الحاسب بعد الانتهاء من استبدال FRU، تأكد من أنه قد تم إعادة كل من المسامير والسوست وكل الأجزاء الصغيرة الأخرى في أماكنهم ولم يتم فقدهم داخل الحاسب. ويمكن التحقق من ذلك عن طريق هز الحاسب والاستماع لأي صوت صاخب يصدر منه. قد تؤدي الأجزاء أو الرقائق المعدنية إلى حدوث دائرة قصر.



تحتوي بعض البطاريات الاحتياطية على كمية صغيرة من مادتي النيكل والكاديوم. لا تقم بفك أو إعادة شحن البطارية الاحتياطية ولا تقم أيضا بالقائها في النار أو الماء ولا تتسبب في أحداث دائرة قصر بها. قم بالتخلص من البطارية كما هو موضح في القوانين المحلية. استخدم نوع البطارية المحدد والذي يوصى باستخدامه. حيث أنه قد يؤدي استخدام نوع بطارية غير صحيح إلى اشتعالها أو انفجارها.



تحتوي حزمة البطارية على كمية صغيرة من مادة النيكل. لا تقم بفكها أو القاءها في النار أو الماء ولا تتسبب في أحداث دائرة قصر بها. تخلص من حزمة البطارية وفقا لما هو موضح في القوانين المحلية. قم، عند استبدال حزمة البطارية، باستخدام الأنواع المحددة فقط والتي يوصى باستخدامها. حيث أنه قد يؤدي استخدام نوع بطارية غير صحيح إلى اشتعالها أو انفجارها.



قد تتسبب بطارية الليثيوم في حدوث حريق أو انفجار أو حدوث حروق شديدة. لا تقم بإعادة شحن البطارية أو إزالة موصل الاستقطاب الخاص بها ولا تحاول أيضا فكها أو تسخينها لأكثر من ١٠٠ درجة مئوية (٢١٢١ فهرنهايت) أو حرقها أو تعريض محتويات الخانة الخاصة بها للماء. قم بالتخلص من البطارية وفقا لما هو موضح في القوانين المحلية. استخدم نوع البطارية المحدد والذي يوصى باستخدامه. حيث أنه قد يؤدي استخدام نوع بطارية غير صحيح إلى اشتعالها أو انفجارها.



إذا ما انكسرت شاشة LCD ولامس السائل الداخلي عينيك أو يديك، قم في الحال بغسلها بالماء لمدة لا تقل عن ١٥ دقيقة. إذا ما وجدت أي أعراض بعد الغسل اطلب عندئذ المساعدة الطبية.



لتجنب التعرض لأي صدمات، لا تقم بإزالة الغطاء البلاستيكي الذي يحمي الجزء الأسفل من بطاقة العاكس.



على الرغم من أن البطاريات الرئيسية يكون لها جهد منخفض، إلا أنه قد تقوم البطاريات التي حدث قصور بها أو التي تم توصيلها أرضيا بإصدار تيار يكفي لحدوث حروق للأفراد أو تعرض المواد القابلة للاشتعال للحريق.



ما لم يتم السماح بالتبديل الفوري لأي FRU الجاري استبداله بدون ضرورة اغلاق النظام، قم بتنفيذ ما يلي قبل ازالته، قم بإيقاف تشغيل الحاسب ونزع كل أسلاك الطاقة من المخارج الكهربائية وقم أيضا بإزالة حزمة البطارية ثم قم بفصل أي كابلات متصلة.



PERIGO

Antes de ligar o computador após a substituição da FRU, certifique-se de que todos os parafusos, molas e outras peças pequenas estejam no lugar e não estejam soltos dentro do computador. Verifique isso sacudindo o computador e procurando ouvir sons de peças soltas. Peças metálicas ou lascas de metal podem causar curto-circuito.



PERIGO

Algumas baterias reserva contêm uma pequena quantidade de níquel e cádmio. Não desmonte uma bateria reserva, recarregue-a, jogue-a no fogo ou na água, ou deixe-a entrar em curto-circuito. Descarte a bateria conforme requerido pelas leis ou regulamentos locais. Use somente a bateria nas partes listadas apropriadas. O uso de uma bateria incorreta pode resultar em combustão ou explosão da bateria.



PERIGO

O pacote da bateria contém uma pequena quantidade de níquel. Não o desmonte, jogue-o no fogo ou na água, ou deixe-o entrar em curto-circuito. Descarte o pacote da bateria conforme requerido pelas leis ou regulamentos locais. Use somente a bateria nas partes listadas apropriadas ao substituir o pacote da bateria. O uso de uma bateria incorreta pode resultar em combustão ou explosão da bateria.



PERIGO

A bateria de lítio pode causar incêndio, explosão ou graves queimaduras. Não a recarregue, remova seu conector polarizado, desmonte-a, aqueça-a acima de 100°C (212°F), incinere-a, ou exponha o conteúdo de sua célula à água. Descarte a bateria conforme requerido pelas leis ou regulamentos locais. Use somente a bateria nas partes listadas apropriadas. O uso de uma bateria incorreta pode resultar em combustão ou explosão da bateria.



PERIGO

Se o LCD quebrar e o fluido de dentro dele entrar em contato com seus olhos ou com suas mãos, lave as áreas afetadas imediatamente com água durante pelo menos 15 minutos. Procure cuidados médicos se algum sintoma causado pelo fluido surgir após a lavagem.



PERIGO

Para evitar choque elétrico, não remova a capa plástica que protege a parte inferior da placa inversora.



PERIGO

Embora as principais baterias possuam baixa voltagem, uma bateria em curto-circuito ou aterrada pode produzir corrente o bastante para queimar materiais de pessoal ou inflamáveis.



PERIGO

A menos que uma hot swap seja permitida para a FRU que está sendo substituída, faça o seguinte antes de removê-la: desligue o computador, desconecte todos os cabos de energia das tomadas, remova o pacote de baterias e desconecte quaisquer cabos de interconexão.



DANGER

Avant de remettre l'ordinateur sous tension après remplacement d'une unité en clientèle, vérifiez que tous les ressorts, vis et autres pièces sont bien en place et bien fixées. Pour ce faire, secouez l'unité et assurez-vous qu'aucun bruit suspect ne se produit. Des pièces métalliques ou des copeaux de métal pourraient causer un court-circuit.



DANGER

Certaines batteries de secours contiennent du nickel et du cadmium. Ne les démontez pas, ne les rechargez pas, ne les exposez ni au feu ni à l'eau. Ne les mettez pas en court-circuit. Pour les mettre au rebut, conformez-vous à la réglementation en vigueur. Lorsque vous remplacez la pile de sauvegarde ou celle de l'horloge temps réel, veillez à n'utiliser que les modèles cités dans la liste de pièces détachées adéquate. Une batterie ou une pile inappropriée risque de prendre feu ou d'exploser.



DANGER

La batterie contient du nickel. Ne la démontez pas, ne l'exposez ni au feu ni à l'eau. Ne la mettez pas en court-circuit. Pour la mettre au rebut, conformez-vous à la réglementation en vigueur. Lorsque vous remplacez la batterie, veillez à n'utiliser que les modèles cités dans la liste de pièces détachées adéquate. En effet, une batterie inappropriée risque de prendre feu ou d'exploser.



DANGER

La pile de sauvegarde contient du lithium. Elle présente des risques d'incendie, d'explosion ou de brûlures graves. Ne la rechargez pas, ne retirez pas son connecteur polarisé et ne la démontez pas. Ne l'exposez pas à une température supérieure à 100°C, ne la faites pas brûler et n'en exposez pas le contenu à l'eau. Mettez la pile au rebut conformément à la réglementation en vigueur. Une pile inappropriée risque de prendre feu ou d'exploser.



DANGER

Si le panneau d'affichage à cristaux liquides se brise et que vous recevez dans les yeux ou sur les mains une partie du fluide, rincez-les abondamment pendant au moins quinze minutes. Consultez un médecin si des symptômes persistent après le lavage.



DANGER

Afin d'éviter tout risque de choc électrique, ne retirez pas le cache en plastique protégeant la partie inférieure de la carte d'alimentation.



DANGER

Bien que le voltage des batteries principales soit peu élevé, le court-circuit ou la mise à la masse d'une batterie peut produire suffisamment de courant pour brûler des matériaux combustibles ou causer des brûlures corporelles graves.



DANGER

Si le remplacement à chaud n'est pas autorisé pour l'unité remplaçable sur site que vous remplacez, procédez comme suit avant de retirer l'unité : mettez l'ordinateur hors tension, débranchez tous les cordons d'alimentation des prises de courant, retirez le bloc de batterie et déconnectez tous les câbles d'interconnexion.



VORSICHT

Bevor nach einem FRU-Austausch der Computer wieder angeschlossen wird, muß sichergestellt werden, daß keine Schrauben, Federn oder andere Kleinteile fehlen oder im Gehäuse vergessen wurden. Der Computer muß geschüttelt und auf Klappergeräusche geprüft werden. Metallteile oder-splitter können Kurzschlüsse erzeugen.



VORSICHT

Die Bereitschaftsbatterie, die sich unter dem Diskettenlaufwerk befindet, kann geringe Mengen Nickel und Cadmium enthalten. Sie darf nur durch die Verkaufsstelle oder den IBM Kundendienst ausgetauscht werden. Sie darf nicht zerlegt, wiederaufgeladen, kurzgeschlossen, oder Feuer oder Wasser ausgesetzt werden. Die Batterie kann schwere Verbrennungen oder Verätzungen verursachen. Bei der Entsorgung die örtlichen Bestimmungen für Sondermüll beachten. Beim Ersetzen der Bereitschafts- oder Systembatterie nur Batterien des Typs verwenden, der in der Ersatzteilliste aufgeführt ist. Der Einsatz falscher Batterien kann zu Entzündung oder Explosion führen.



VORSICHT

Akkus enthalten geringe Mengen von Nickel. Sie dürfen nicht zerlegt, wiederaufgeladen, kurzgeschlossen, oder Feuer oder Wasser ausgesetzt werden. Bei der Entsorgung die örtlichen Bestimmungen für Sondermüll beachten. Beim Ersetzen der Batterie nur Batterien des Typs verwenden, der in der Ersatzteilliste aufgeführt ist. Der Einsatz falscher Batterien kann zu Entzündung oder Explosion führen.



VORSICHT

Die Systembatterie ist eine Lithiumbatterie. Sie kann sich entzünden, explodieren oder schwere Verbrennungen hervorrufen. Batterien dieses Typs dürfen nicht aufgeladen, zerlegt, über 100°C erhitzt oder verbrannt werden. Auch darf ihr Inhalt nicht mit Wasser in Verbindung gebracht oder der zur richtigen Polung angebrachte Verbindungsstecker entfernt werden. Bei der Entsorgung die örtlichen Bestimmungen für Sondermüll beachten. Beim Ersetzen der Batterie nur Batterien des Typs verwenden, der in der Ersatzteilliste aufgeführt ist. Der Einsatz falscher Batterien kann zu Entzündung oder Explosion führen.



VORSICHT

Die Leuchtstoffröhre im LCD-Bildschirm enthält Quecksilber. Bei der Entsorgung die örtlichen Bestimmungen für Sondermüll beachten. Der LCD-Bildschirm besteht aus Glas und kann zerbrechen, wenn er unsachgemäß behandelt wird oder der Computer auf den Boden fällt. Wenn der Bildschirm beschädigt ist und die darin befindliche Flüssigkeit in Kontakt mit Haut und Augen gerät, sollten die betroffenen Stellen mindestens 15 Minuten mit Wasser abgespült und bei Beschwerden anschließend ein Arzt aufgesucht werden.



VORSICHT

Aus Sicherheitsgründen die Kunststoffabdeckung, die den unteren Teil der Spannungswandlerplatine umgibt, nicht entfernen.



VORSICHT

Obwohl Hauptbatterien eine niedrige Spannung haben, können sie doch bei Kurzschluß oder Erdung genug Strom abgeben, um brennbare Materialien zu entzünden oder Verletzungen bei Personen hervorzurufen.



VORSICHT

Wenn ein Austausch der FRU bei laufendem Betrieb nicht erlaubt ist, gehen Sie beim Austausch der FRU wie folgt vor: Schalten Sie den Computer aus, ziehen Sie alle Netzkabel von den Netzsteckdosen ab, entfernen Sie den Akku und ziehen Sie alle miteinander verbundenen Kabel ab.



סכנה

לפני הפעלת המחשב לאחר החלפת FRU יש לוודא שכל תברגים, הקפיצים, וחלקים קטנים אחרים נמצאים במקומם ואינם חופשיים לזוז בתוך המחשב. כדי לוודא זאת, יש לטלטל את המחשב ולחקשיב לגילוי קולות שקשוק. חלקי או שבבי מתכת עלולים לגרום לקצרים חשמליים.



סכנה

סוללות המתנה מסוימות מכילות כמוט קטנה של ניקל וקדמיום. אין לפרק סוללת המתנה, לטעון אותה מחדש, להשליך אותה לאש או למים או לקצר אותה. יש לסלק את הסוללה כנדרש על ידי התקנות וחוקים המקומיים. יש להשתמש רק בסוללה המופיעה ברשימת החלקים המתאימה. שימוש בסוללה לא מתאימה עלול לגרום להצתה או התמוצות של הסוללה.



סכנה

מארו הסוללה מכיל כמוט קטנה של ניקל וקדמיום. אין לפרק את מארו הסוללה, להשליך אותו לאש או למים או לקצר אותו. יש לסלק את מארו הסוללה הסוללה כנדרש על ידי התקנות וחוקים המקומיים. יש להשתמש רק בסוללה המופיעה ברשימת החלקים המתאימה בזמן החלפת מארו הסוללה. שימוש בסוללה לא מתאימה עלול לגרום להצתה או התמוצות של הסוללה.



סכנה

סוללת חליתיום עלולה לגרום לשריפה, להתפוצצות או לכוויות קשות. אין לטעון אותה מחדש, לסלק את המחבר המקוטב שלה, לפרק אותה או לחמם אותה לטמפרטורה העולה על 100 מעלות צלזיוס. אין לשרוף את הסוללה ואין לחשוף את תוכן התא למים. יש לסלק את הסוללה כנדרש בתקנות ובחוקים המקומיים. יש להשתמש רק בסוללה המופיעה ברשימת החלקים המתאימים. שימוש בסוללה אחרת עלול לגרום לסכנת שריפה או התפוצצות.



סכנה

אם מסך חגביש הנוזלי (LCD) נשבר והנוזל מתוך המסך בא במגע עם עיניכם או ידיכם, שטפו את האזורים הנוגעים מיד במים במשך 15 דקות לפחות. פנו לקבלת עזרה רפואית אם תסמינים הנובעים מחמצע עם הנוזל נמשכים לאחר השטיפה.



סכנה

כדי למנוע התחשמלות, אין להסיר את מכסה הפלסטיק המגן על חלקו התחתון של הכרטיס ההפוך.



סכנה

אף שהסוללות הראשיות הן בעלות מתח נמוך, סוללה מקוצרת או מוארכת עלולה להפיק זרם מספיק לגרימת כוויות או להצתת חומרים דליקים.



סכנה

אלא אם כן מותרת 'החלפה חמה' של ה-FRU המוחלף, פעלו כדלהלן לפני הסרתו: כבו את המחשב, נתקו את כל כבלי החשמל מהשקעים, חוציאו את מארז הסוללות ונתקו את כל הכבלים המחוברים.



כִּינָה

FRU の交換後、ThinkPad の電源を入れる前に、ねじ、バネ、その他の小さな部品がすべて正しい位置にあり、また ThinkPad の内部で緩んでいないことを確認してください。これを確認するには、ThinkPad を振って、カチャカチャと音がしないか確かめます。金属部品や金属破片はショートの原因になることがあります。



כִּינָה

予備バッテリーの中には少量のニッケルとカドミウムが含まれているものがあります。したがって、予備バッテリーの分解、再充電、火または水の中への投棄、またはショートさせることは決して行わないでください。バッテリーを廃棄する場合は地方自治体の条例に従ってください。適切なパーツ・リストにあるバッテリーだけを使用してください。誤ったバッテリーを使用すると、バッテリーが発火したり、爆発したりすることがあります。



危険

バッテリー・パックには少量のニッケルが含まれています。バッテリー・パックを分解したり、火または水の中に投げ込んだり、ショートさせないでください。バッテリー・パックの廃棄にあたっては、地方自治体の条例または規則に従ってください。バッテリー・パックを交換するときは、適切なパーツ・リストにあるバッテリーだけを使用してください。誤ったバッテリーを使用すると、バッテリーが発火したり、爆発したりすることがあります。



危険

リチウム・バッテリーは、火災、爆発、または重症のやけどを引き起こすことがあります。バックアップ・バッテリーの充電、その極性コネクタの取り外し、バッテリー本体の分解、100 °C (212 °F) 以上への加熱、焼却、電池の中身を水に浸すことはしないでください。バッテリーを廃棄する場合は地方自治体の条例に従ってください。適切なパーツ・リストにあるバッテリーだけを使用してください。誤ったバッテリーを使用すると、バッテリーが発火したり、爆発したりすることがあります。



危険

LCD が破損し、LCD 中の液体が目に入ったり、手に触れたりした場合は、液体が触れた部分を少なくとも 15 分間洗い流してください。洗い流した後に、液体によって何らかの症状が現れた場合は、医師の治療を受けてください。



危険

感電を防ぐため、インバーター・カードの下部を保護しているプラスチック・カバーを外さないでください。



危険

メイン・バッテリーの電圧は低くても、ショートしたり、接地したバッテリーが、作業者にやけどを負わせたり、可燃物を燃やすだけの電流を発生させる場合があります。



危険

交換しようとしている FRU がホット・スワップに対応していない場合、それを取り外す前に、コンピューターの電源をオフにし、すべての電源コードをコンセントから抜き、バッテリー・パックを取り外して、相互接続しているケーブルをすべて切り離してください。



위험

FRU를 교체하고 나서 컴퓨터 전원을 켜기 전에 모든 나사, 스프링 및 기타 작은 부품들이 올바른 위치에 있는지, 컴퓨터 내부에 단단하게 연결되어 있는지 확인하십시오. 컴퓨터를 흔들어 달걀거리는 소리가 나지 않는지 확인하십시오. 금속 부품 또는 금속 조각은 누전을 일으킬 수 있습니다.



위험

일부 보조 배터리에는 소량의 니켈 및 카드뮴이 포함되어 있습니다. 보조 배터리를 분해하거나, 다시 충전하거나, 불 또는 물에 던지거나, 단락시키지 마십시오. 배터리 팩을 폐기할 때에는 해당 지역의 법률 규정을 따르십시오. 배터리 팩을 교체할 때에는 올바른 배터리만 사용하십시오. 올바르지 않은 배터리를 사용하면 배터리가 발화되거나 폭발할 수 있습니다.



위험

배터리 팩에는 소량의 니켈이 포함되어 있습니다. 배터리 팩을 분해하거나, 불 또는 물에 던지거나, 단락시키지 마십시오. 배터리 팩을 폐기할 때에는 해당 지역의 법률 규정을 따르십시오. 배터리 팩을 교체할 때에는 올바른 배터리만 사용하십시오. 올바르지 않은 배터리를 사용하면 배터리가 발화되거나 폭발할 수 있습니다.



위험

리튬 배터리는 화재, 폭발 또는 심각한 화상을 일으킬 수 있습니다. 리튬 배터리를 다시 충전하거나, 극성 커넥터를 제거하거나, 분해하거나, 100C(212F) 이상으로 가열하거나, 소각하거나, 전지 내용물을 물에 노출시키지 마십시오. 배터리를 폐기할 때에는 해당 지역의 법률 규정을 따르십시오. 올바른 배터리만 사용하십시오. 올바르지 않은 배터리를 사용하면 배터리가 발화되거나 폭발할 수 있습니다.



위험

LCD가 파손되어 LCD 내부의 액체가 눈에 들어가거나 손에 묻으면 즉시 깨끗한 물로 15분 이상 닦아 내십시오. 씻은 후에 조금이라도 이상을 느끼면 즉시 병원에 가서 의사의 진찰을 받아야 합니다.



위험

전기적 위험을 방지하려면 인버터 카드의 아래 부분을 보호하는 플라스틱 덮개를 제거하지 마십시오.



위험

기본 배터리의 전압은 낮지만, 단락되거나 접지된 배터리는 화상을 입히기에 충분한 전류와 가연성 물질을 발생시킬 수 있습니다.



위험

FRU 교체 시 Hot Swap이 지원되지 않는 경우, FRU를 제거하기 전에 컴퓨터의 전원을 끄고, 전기 콘센트에서 전원 코드를 분리하고, 배터리를 제거한 후, 연결된 모든 케이블을 분리하십시오.



PELIGRO

Antes de encender el sistema después de sustituir una FRU, compruebe que todos los tornillos, muelles y demás piezas pequeñas se encuentran en su sitio y no se encuentran sueltas dentro del sistema. Compruébelo agitando el sistema y escuchando los posibles ruidos que provocarían. Las piezas metálicas pueden causar cortocircuitos eléctricos.



PELIGRO

Algunas baterías de reserva contienen una pequeña cantidad de níquel y cadmio. No las desmonte, ni recargue, ni las eche al fuego o al agua ni las cortocircuite. Deséchelas tal como dispone la normativa local. Utilice sólo baterías que se encuentren en la lista de piezas. La utilización de una batería no apropiada puede provocar la ignición o explosión de la misma.



PELIGRO

Las baterías contienen pequeñas cantidades de níquel. No las desmonte, ni recargue, ni las eche al fuego o al agua ni las cortocircuite. Deséchelas tal como dispone la normativa local. Utilice sólo baterías que se encuentren en la lista de piezas al sustituir la batería. La utilización de una batería no apropiada puede provocar la ignición o explosión de la misma.



PELIGRO

La batería de repuesto es una batería de litio y puede provocar incendios, explosiones o quemaduras graves. No la recargue, ni quite el conector polarizado, ni la desmonte, ni caliente por encima de los 100°C (212°F), ni la incinere ni esponga el contenido de sus celdas al agua. Deséchela tal como dispone la normativa local.



PELIGRO

Si la LCD se rompe y el fluido de su interior entra en contacto con sus ojos o sus manos, lave inmediatamente las áreas afectadas con agua durante 15 minutos como mínimo. Obtenga atención médica si se presenta algún síntoma del fluido después de lavarse.



PELIGRO

Para evitar descargas, no quite la cubierta de plástico que rodea la parte baja de la tarjeta invertida.



PELIGRO

Aunque las baterías principales tienen un voltaje bajo, una batería cortocircuitada o con contacto a tierra puede producir la corriente suficiente como para quemar material combustible o provocar quemaduras en el personal.



PELIGRO

Salvo que se permita el intercambio en caliente para la unidad sustituible localmente, realice lo siguiente antes de extraerla: apague el sistema, desconecte todos los cables de alimentación de las tomas de alimentación eléctrica, extraiga la batería y desconecte los cables de interconexión.



危險

完成 FRU 更換之後，在開啟電腦的電源之前，請確定所有螺絲、彈簧及其他小零件都已歸位，沒有遺留在電腦內部。
若要確認這一點，請搖晃電腦，聽聽看是否有卡嗒的聲響。
金屬零件或儀錶的火花會造成電線短路。



危險

部分備用電池含有微量的鎳和鎘。請勿拆開備用電池、再充電、丟入火或水中，或使其形成短路。請按照當地法令或規定來棄置電池。
僅限使用零件清單中的電池。使用不適當的電池會導致電池起火或爆炸。



危險

電池套件含有微量的鎳。請勿拆開電池套件、丟入火或水中，或使其形成短路。請按照當地法令或規定來棄置電池套件。
更換電池套件時，僅限使用零件清單中的電池。使用不適當的電池會導致電池起火或爆炸。



危險

鋰電池會導致起火、爆炸或嚴重燒傷。請勿再充電、拔除其電極接頭、拆開、加熱超過 100°C (212°F)、焚燒，或讓電池組成物浸到水。請按照當地法令或規定來棄置電池。
僅限使用零件清單中的電池。使用不適當的電池會導致電池起火或爆炸。



危險

如果 LCD 破裂導致 LCD 流出的液體沾到您的眼睛或手，請立即以清水沖洗沾染部位至少 15 分鐘。如果在清洗後出現該液體所造成的任何症狀，請就醫治療。



危險

為避免電擊，請勿拆下轉換卡下面的塑膠護蓋。



危險

雖然主電池的電壓很低，但短路或接地電池所產生的電流，仍足以使人燒傷或使可燃物質起火。



危險

除非 FRU 允許以熱抽換來替換，否則請依下列方式將其移除：將電腦關機，拔除插座上所有電源線，移除電池包，並拔開任何交互連接的線材。

Chapter 2. General checkout

This chapter contains the following topics:

Before you go to the checkout instructions, ensure that you read the following important notes.

Important notes:

- **It is recommended that only certified trained personnel perform service on the Computer. For customers electing to repair their own machines, please follow all instructions carefully.**
- **Before replacing any FRU, read the entire page on removing and replacing FRUs.**
- **Be extremely careful during such writing operations as copying, saving, or formatting.** Drives in the computer that you are servicing sequence might have been altered. If you select an incorrect drive, data or programs might be overwritten.
- **Replace a FRU only with another FRU of the correct model.** When you replace a FRU, make sure that the model of the machine and the FRU part number are correct by referring to the FRU parts list.
- **A FRU should not be replaced because of a single, unreproducible failure.** Single failures can occur for a variety of reasons that have nothing to do with a hardware defect, such as cosmic radiation, electrostatic discharge, or software errors. Consider replacing a FRU only when a problem recurs. If you suspect that a FRU is defective, clear the error log and run the test again. If the error does not recur, do not replace the FRU.
- **Be careful not to replace a nondefective FRU.**

What to do first

When you return a FRU, you must include the following information in the parts exchange form or parts return form that you attach to it:

1. Name and phone number of service technician
2. Date of service
3. Date on which the machine failed
4. Date of purchase
5. Failure symptoms, error codes appearing on the display, and beep symptoms
6. Procedure index and page number in which the failing FRU was detected
7. Failing FRU name and part number
8. Machine type, model number, and serial number
9. Customer's name and address

Note: During the warranty period, the customer may be responsible for repair costs if the computer damage was caused by misuse, accident, modification, unsuitable physical or operating environment, or improper maintenance by the customer. Following is a list of some common items that are not covered under warranty and some symptoms that might indicate that the system was subjected to stress beyond normal use.

Before checking problems with the computer, determine whether the damage is covered under the warranty by referring to the following list:

The following are not covered under warranty:

- LCD panel cracked from the application of excessive force or from being dropped
- Scratched (cosmetic) parts
- Distortion, deformation, or discoloration of the cosmetic parts
- Plastic parts, latches, pins, or connectors that have been cracked or broken by excessive force

- Damage caused by liquid spilled into the system
- Damage caused by the improper insertion of a personal-computer card (PC card) or the installation of an incompatible card
- Improper disc insertion or use of an external optical drive
- Fuses blown by attachment of a non-supported device
- Forgotten computer password (making the computer unusable)
- Sticky keys caused by spilling a liquid onto the keyboard
- Use of an incorrect ac power adapter on laptop products

The following symptoms might indicate damage caused by non-warranted activities:

- Missing parts might be a symptom of improper service or modification.
- Check for obvious damage to a hard disk drive. If the spindle of a hard disk drive becomes noisy, the hard disk drive might have been dropped or subject to excessive force.

CRU list

Table 1. CRU list

CRU	Type
ac power adapter	self-service
power cord	self-service

Chapter 3. Identifying FRUs (CRUs)

Locate FRUs and CRUs

The exploded illustrations help Lenovo service technicians identify FRUs or CRUs that they may need to replace when servicing a customer's computer.

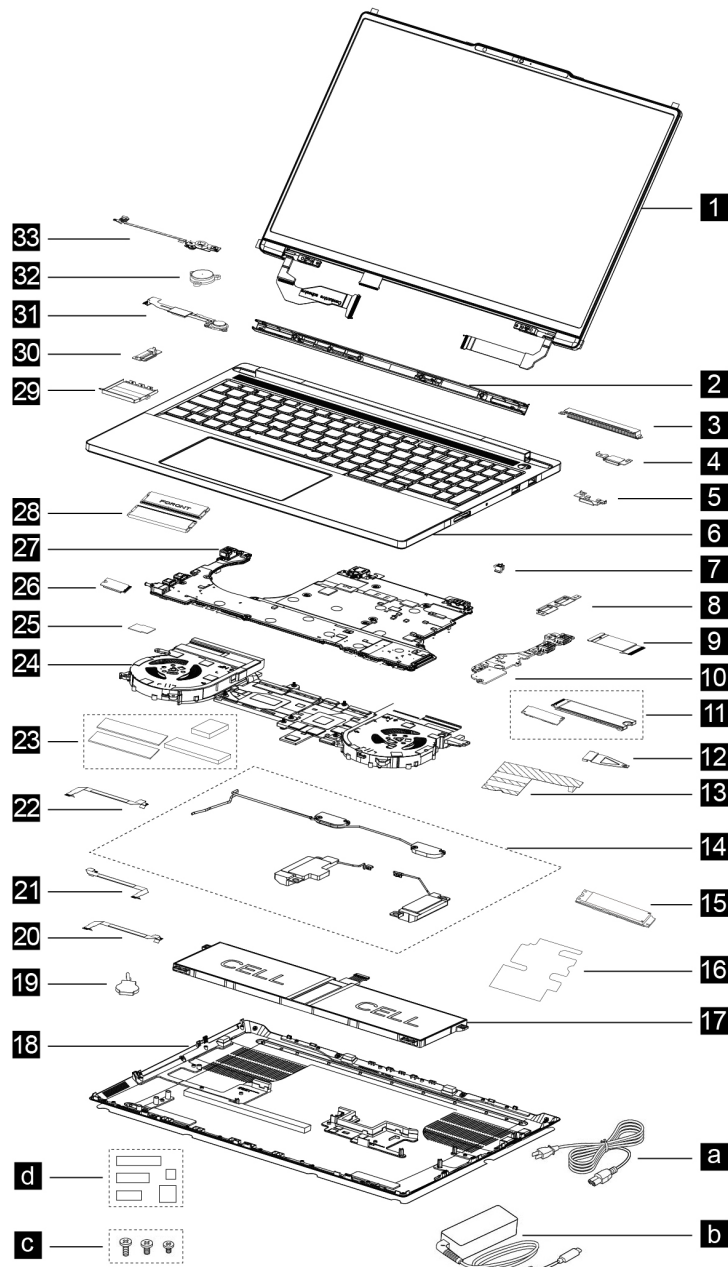


Figure 1. System exploded view

Table 2. FRU (CRU) categories

No.	FRU (CRU) category
1	LCD module Note: The LCD module as a whole is not a FRU, but it contains FRUs as its components.
2	Hinge cap
3	Thermal fin
4	DC-in bracket
5	HDMI bracket
6	Upper case (with keyboard)
7	System board hook
8	I/O bracket
9	I/O board cable
10	I/O board
11	2242 solid-state drive and 2280 solid-state drive Note: The 2280 solid-state drive is available for ThinkBook 16p G6 IAX only.
12	2242 solid-state drive bracket
13	Solid-state drive Cu foil mylar
14	Speakers* Note: For ThinkBook 16p G6 ADR, the speakers are not classified as FRU, but are supplied as part of the upper case.
15	DNPU*
16	DNPU graphite*
17	Battery pack
18	Lower case
19	Coin-cell battery
20	Left forcepad board cable*
21	Right forcepad board cable*
22	Touchpad board cable
23	Thermal pads
24	Thermal module
25	Wi-Fi card mylar
26	Wi-Fi card
27	System board
28	Memory module
29	Memory shielding
30	USB-A bracket
31	Fingerprint sensor module*
32	Power button (without fingerprint sensor)

Table 2. FRU (CRU) categories (continued)

33	Power cable
a	Power cord
b	ac power adapter
c	Screw kit
d	Label kit

* For ThinkBook 16p G6 IAX only

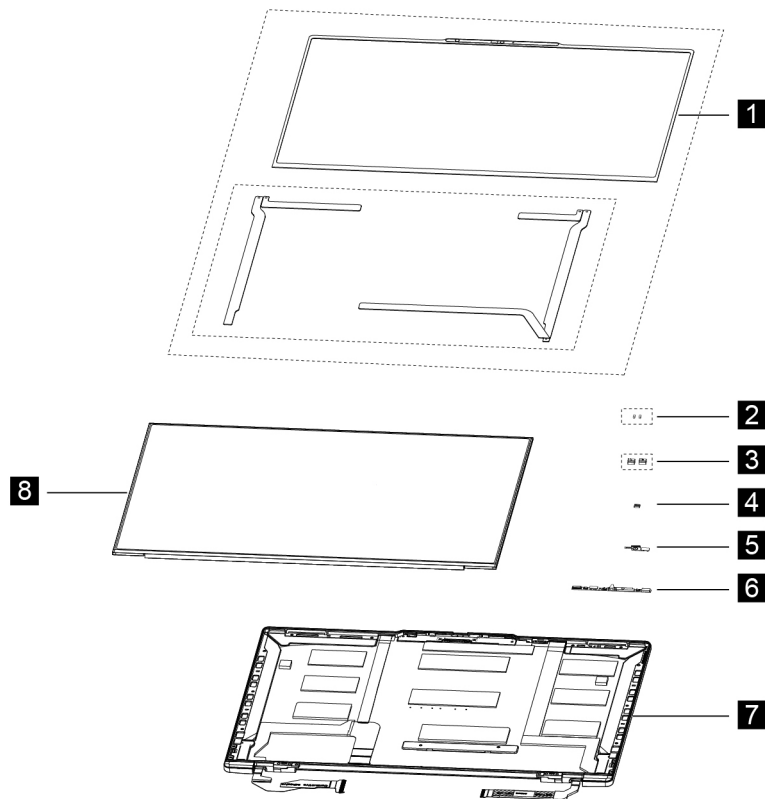


Figure 2. LCD exploded view

Table 3. FRU (CRU) categories

No.	FRU (CRU) category
1	LCD bezel Note: Five pieces of removable tape as a whole are not classified as FRU, but are supplied as part of the LCD bezel.
2	IR sponges*
3	Microphone rubbers
4	Ambient light sensor (ALS) rubber*
5	Camera shutter

Table 3. FRU (CRU) categories (continued)

6	Camera board
7	LCD cover
8	LCD panel

* For ThinkBook 16p G6 IAX only

Chapter 4. Removing a FRU or CRU

Service tools

The following table lists tools for servicing Lenovo computers. Tools with a cross mark are needed for servicing the product models as described by this publication. Prepare them before you service the product.

Table 4. Service tools

Service tool and consumable	Model applicability
Screw driver (Phillips head) (PH1/PH0)	X
Screw driver (Torx head) (T5)	X
Screw driver (Torx head) (T30)	
Pry tool 1	X
Tweezers (conductive)	X
Tweezers (isolated)	
Suction cup	
Hexagonal socket	
Thermal interface materials	X
Acetate tape	X
Polyamide tape	
Mylar tape	
Electrical tape	
Double-sided tape	
Conductive tape	
Eraser	
Heat gun	
Brown brush	

Notes:

- T30 screw drivers are used to service the new Intel Xeon CPUs.
- Hexagonal sockets are used to remove antenna connectors.

General guidelines

When removing or replacing a FRU, ensure that you observe the following general guidelines:

1. It is recommended that only certified trained personnel perform service on computers. For customers electing to repair their own machines, please follow all instructions carefully.
2. Begin by removing any FRUs that have to be removed before replacing the failing FRU. Any such FRUs are listed at the beginning of each FRU replacement procedure. Remove them in the order in which they are listed.

3. Follow the correct sequence in the steps for removing a FRU, as shown in the illustrations by the numbers in square callouts.
4. When removing a FRU, move it in the direction as shown by the arrow in the illustration.
5. To install a new FRU in place, perform the removal procedure in reverse and follow any notes that pertain to replacement.
6. When replacing a FRU, carefully retain and reuse all screws.
7. When replacing the base cover, reapply all labels that come with the replacement base cover. If some original labels are not included with the replacement base cover, peel them off from the original base cover and paste them on the replacement base cover.



Before removing any FRU or CRU, shut down the computer and unplug all power cords from electrical outlets.

Attention: After replacing a FRU, do not turn on the computer until you have ensured that all screws, springs, and other small parts are in place and none are loose inside the computer. Verify this by shaking the computer gently and listening for rattling sounds. Metallic parts or metal flakes can cause electrical short circuits.

Attention: The system board is sensitive to and can be damaged by ESD. Before touching it, establish personal grounding by touching a ground point with one hand or by using an ESD strap (P/N 6405959).

Handling thermal interface materials

Thermal interface materials are typically applied between a heat sink and a CPU (and/or GPU) die to enhance the heat transfer capability of the heat sink. If thermal interface materials are exposed during computer servicing, such as when replacing the heat sink or system board, it is important to handle the thermal interface materials properly.

- You need to completely remove the old thermal interface materials from the CPU and/or GPU die.
- You need to apply new thermal interface materials onto the heat sink according to the type, quantity, and application areas specified in this publication.

Related tasks

“Remove the thermal module” on page 41

“Remove the system board and the I/O board cable” on page 53

Type, quantity, and areas of thermal interface materials application on the heat sink

The table and figure below provide information on the type and quantity of thermal interface materials, as well as the specific areas on the heat sink where these materials should be applied.

Area	Type	Quantity
a	PTM7958	1 piece, 15.4 mm × 13.2 mm × 0.18 mm
b	PTM7958	1 piece, 27 mm × 13 mm × 0.18 mm

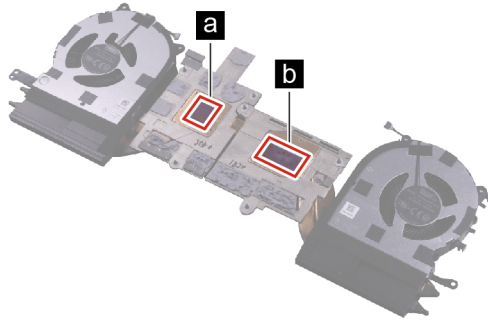


Figure 3. Areas on the heat sink where thermal interface materials should be applied

Areas on the system board where thermal interface materials are applied

The following figure shows the areas on the system board where thermal interface materials are applied.

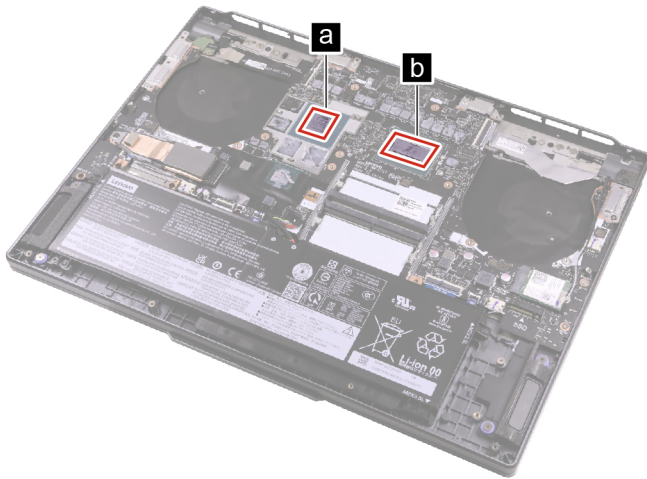


Figure 4. Areas on the system board where thermal interface materials are applied

Remove the lower case

Make sure the computer has been shut down before servicing the computer.

- Step 1. Place the computer upside down on a flat surface.
- Step 2. Remove ten screws (1). Then, pry up the latches and remove the lower case (2).

CAUTION:

To avoid scratching the sealing edges of the upper case, do not forcibly pry open the lower case with tools.

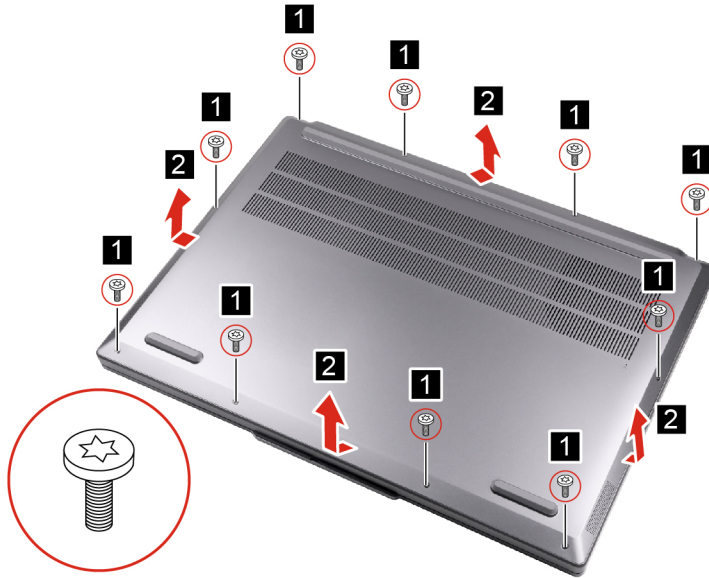


Figure 5. Remove ten screws and the lower case

Screw specifications	Number of screws	Torque force (kgf.cm)
M2 × L2.6	10	1.85 ± 0.15

Go to <https://support.lenovo.com/partslookup> to look up the Lenovo part numbers of the following replacement part:

Lower case

Remove the battery pack

Make sure the following FRU (or CRU) has been removed.

“Remove the lower case” on page 29

Step 1. Disconnect the battery pack cable from the system board (1). Then, remove four screws (2) and remove the battery pack (3).

Attention: Use your fingernail to pull the connector to unplug it. Do not pull the cable.

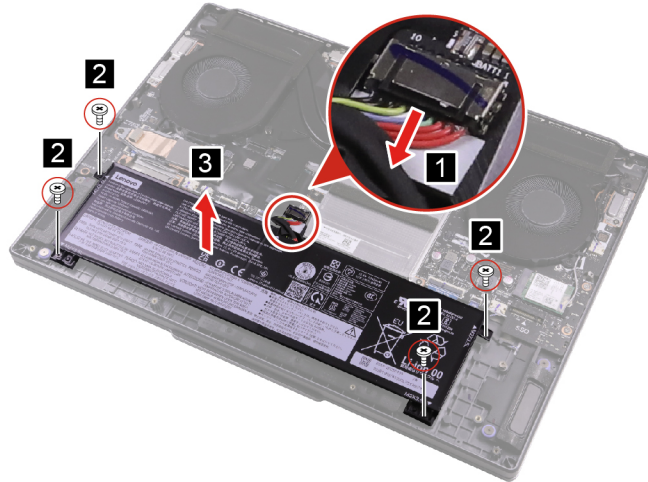


Figure 6. Remove four screws and the battery pack

Screw specifications	Number of screws	Torque force (kgf.cm)
M2 × L3.5	4	1.85 ± 0.15

Go to <https://support.lenovo.com/partslookup> to look up the Lenovo part numbers of the following replacement part:

Battery pack

Remove the solid-state drives

Note: The product supports up to two solid-state drives. Remove both if needed.

Remove the 2280 solid-state drive (for ThinkBook 16p G6 IAX)

Make sure the following FRU (or CRU) has been removed.

“Remove the lower case” on page 29

Step 1. Disconnect the battery pack cable from the system board (1). Then, remove one screw (2) and remove the 2280 solid-state drive by pulling it away from the slot (3).

Attention: Use your fingernail to pull the connector to unplug it. Do not pull the cable.

Note: The thermal pad for the 2280 solid-state drive is pasted on the lower case. Remove the thermal pad if needed.

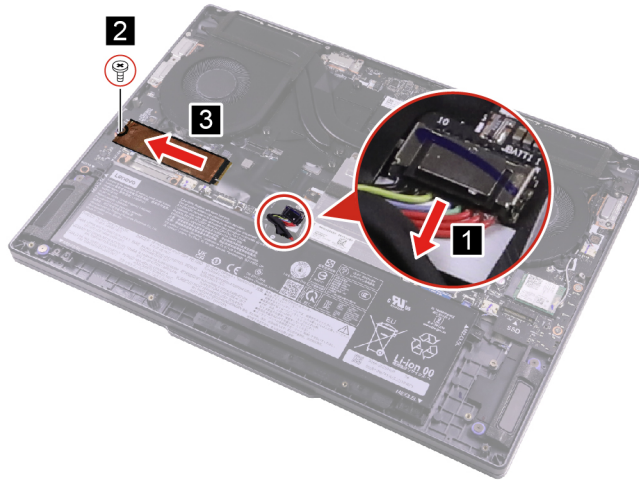


Figure 7. Disconnect the battery pack cable and remove one screw and the 2280 solid-state drive

Screw specifications	Number of screws	Torque force (kgf.cm)
M2 × L2	1	1.85 ± 0.15

Step 2. Peel off the solid-state drive Cu foil mylar (4).



Figure 8. Peel off the solid-state drive Cu foil mylar

Go to <https://support.lenovo.com/partslookup> to look up the Lenovo part numbers of the following replacement parts:

2280 solid-state drive

Solid-state drive Cu foil mylar

Thermal pad

Remove the 2242 solid-state drive

Make sure the following FRU (or CRU) has been removed.

“Remove the lower case” on page 29

Step 1. Disconnect the battery pack cable from the system board (1). Then, remove the 2242 solid-state drive thermal pad (2).

Attention: Use your fingernail to pull the connector to unplug it. Do not pull the cable.

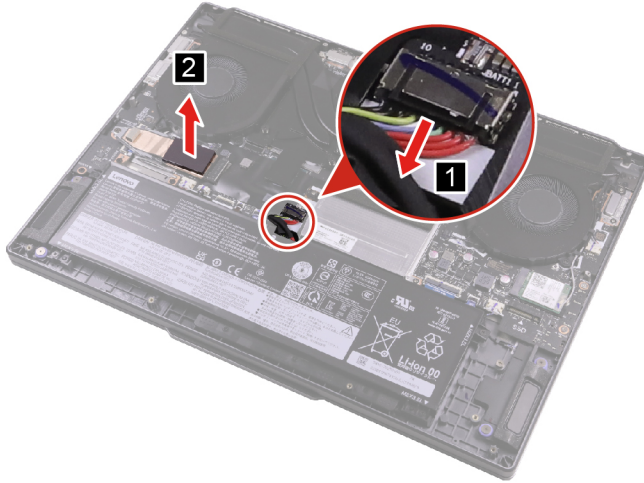


Figure 9. Disconnect the battery pack cable and remove the 2242 solid-state drive thermal pad

Step 2. Remove one screw (3). Then, remove the 2242 solid-state drive by pulling it away from the slot (4).

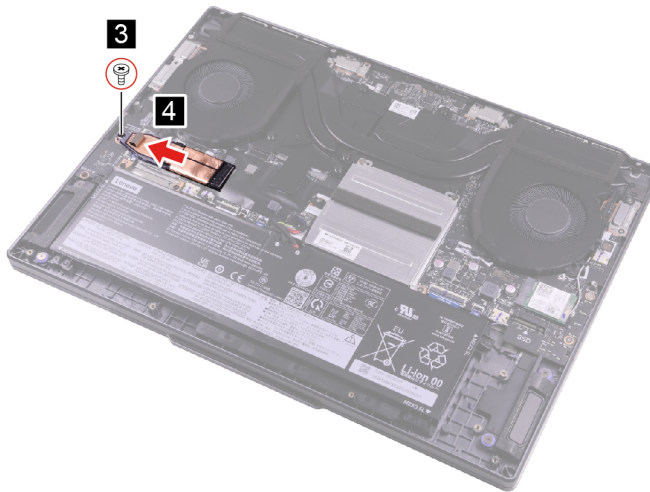


Figure 10. Remove one screw and the 2242 solid-state drive

Screw specifications	Number of screws	Torque force (kgf.cm)
M2 × L2	1	1.85 ± 0.15

Step 3. Peel off the solid-state drive Cu foil mylar (5).



Figure 11. Peel off the solid-state drive Cu foil mylar

Step 4. Remove the 2242 solid-state drive bracket (6).



Figure 12. Remove the 2242 solid-state drive bracket

Go to <https://support.lenovo.com/partslookup> to look up the Lenovo part numbers of the following replacement parts:

- 2242 solid-state drive
- solid-state drive Cu foil mylar
- 2242 solid-state drive bracket
- Thermal pad

Remove the DNPU (for ThinkBook 16p G6 IAX)

Make sure the following FRU (or CRU) has been removed.

“Remove the lower case” on page 29

Step 1. Disconnect the battery pack cable from the system board (1). Then, remove the thermal pad from the DNPU (2).

Attention: Use your fingernail to pull the connector to unplug it. Do not pull the cable.

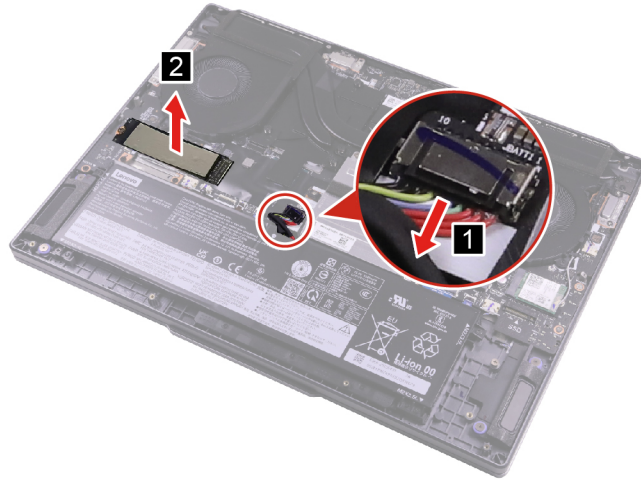


Figure 13. Disconnect the battery pack cable and remove the thermal pad from the DNPU

Step 2. Remove one screw (3) and remove the DNPU by pulling it away from the slot (4).

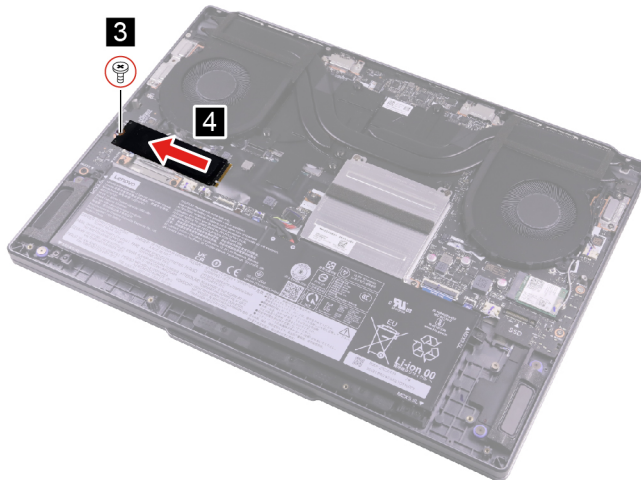


Figure 14. Remove one screw and remove the DNPU

Screw specifications	Number of screws	Torque force (kgf.cm)
M2 × L2	1	1.85 ± 0.15

Note: The DNPU graphite is pasted on the lower case. Peel it off from the lower case if needed (5).

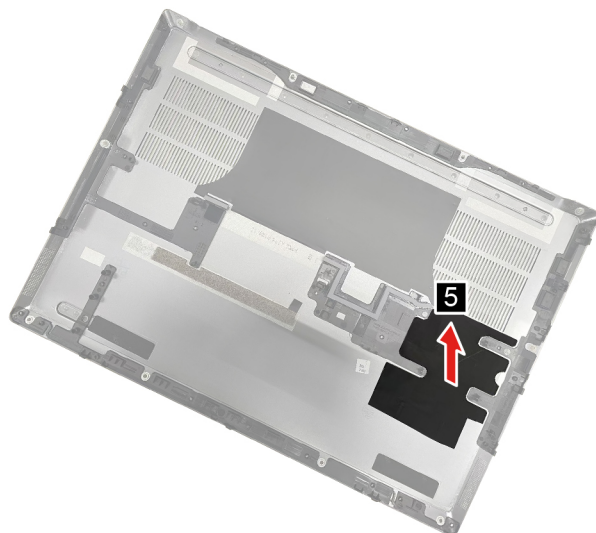


Figure 15. Remove the DNPU graphite

Go to <https://support.lenovo.com/partslookup> to look up the Lenovo part numbers of the following replacement parts:

- DNPU
- DNPU graphite
- Thermal pad

Remove the Wi-Fi card

Make sure the following FRU (or CRU) has been removed.

“Remove the lower case” on page 29

Step 1. Disconnect the battery pack cable from the system board (1). Then, peel off the Wi-Fi card mylar (2) and disconnect the Wi-Fi antennas from the Wi-Fi card (3).

Attention: Use your fingernail to pull the connector to unplug it. Do not pull the cable.

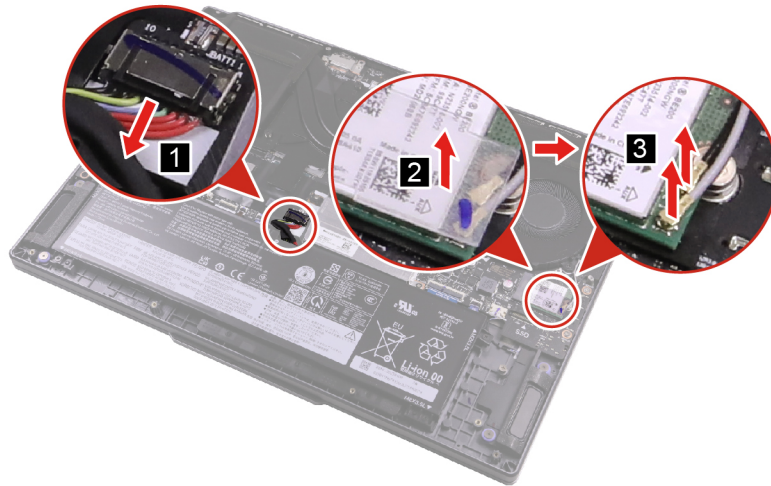


Figure 16. Disconnect the battery pack cable, peel off the Wi-Fi card mylar, and disconnect the Wi-Fi antennas

Step 2. Remove one screw (4). Then, remove the Wi-Fi card (5).

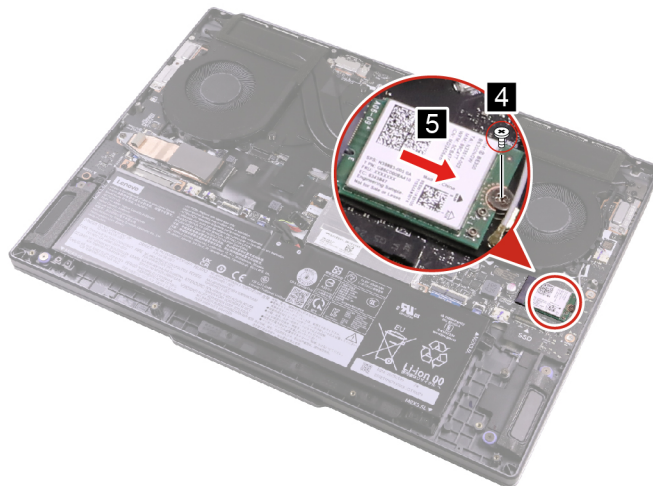


Figure 17. Remove one screw and the Wi-Fi card

Screw specifications	Number of screws	Torque force (kgf.cm)
M2 × L2	1	1.85 ± 0.15

Go to <https://support.lenovo.com/partslookup> to look up the Lenovo part numbers of the following replacement parts:

- Wi-Fi card
- Wi-Fi card mylar

Remove the memory shielding and the memory module

Make sure the following FRU (or CRU) has been removed.

“Remove the lower case” on page 29

Step 1. Disconnect the battery pack cable from the system board (1).

Attention: Use your fingernail to pull the connector to unplug it. Do not pull the cable.

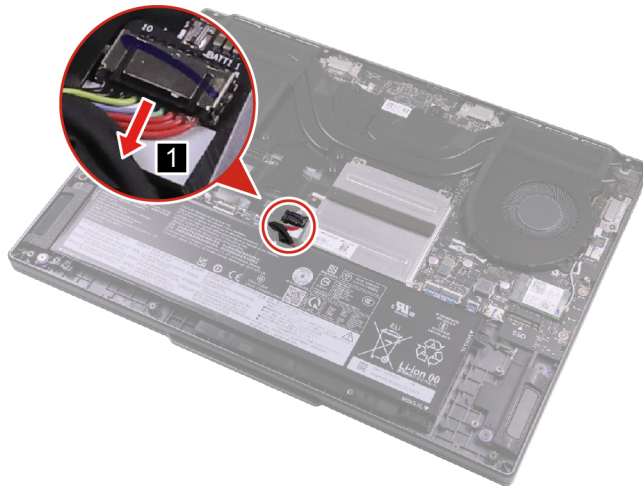


Figure 18. Disconnect the battery pack cable

Step 2. Remove four screws and the system board hook (2 and 3). Then, remove the memory shielding (4).

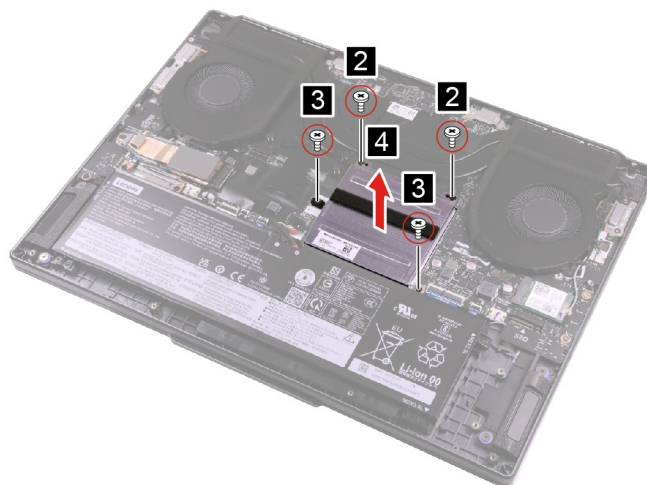


Figure 19. Remove four screws and the system board hook, and then remove the memory shielding

Screw specifications	Number of screws	Torque force (kgf.cm)
M2 × L2	2	1.85 ± 0.15
M2 × L5	2	1.85 ± 0.15

Step 3. Open the latches (5) and remove the memory modules (6).

Note: For ThinkBook 16p G6 ADR, if two 32 GB memory modules are installed, the thermal pads must be removed from them.

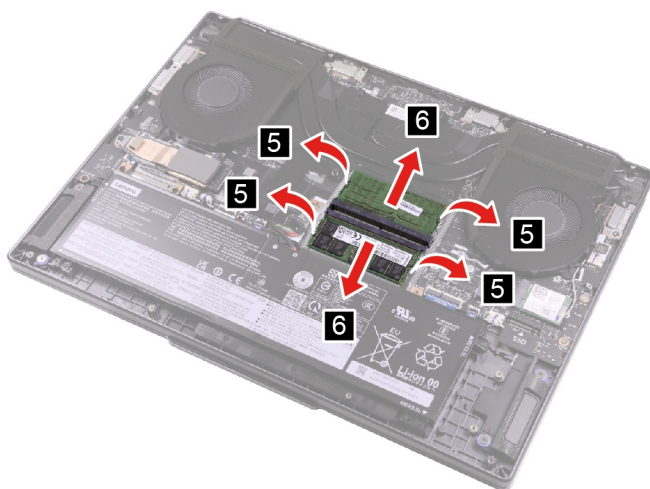


Figure 20. Remove the memory modules

Go to <https://support.lenovo.com/partslookup> to look up the Lenovo part numbers of the following replacement parts:

- Memory module
- Memory shielding
- System board hook

Remove the HDMI bracket

Make sure the following FRU (or CRU) has been removed.

“Remove the lower case” on page 29

Step 1. Disconnect the battery pack cable from the system board (1). Then, remove two screws (2) and remove the HDMI bracket (3).

Attention: Use your fingernail to pull the connector to unplug it. Do not pull the cable.

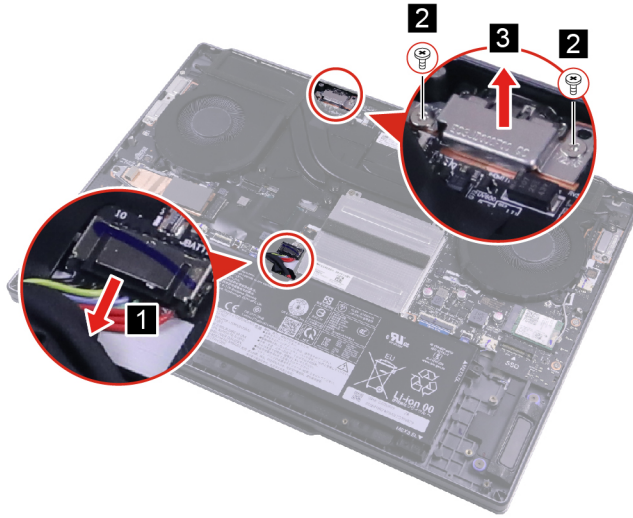


Figure 21. Disconnect the battery pack cable, remove two screws, and remove the DC-in bracket

Screw specifications	Number of screws	Torque force (kgf.cm)
M2 × L5	2	1.85 ± 0.15

Go to <https://support.lenovo.com/partslookup> to look up the Lenovo part numbers of the following replacement part:

HDMI bracket

Remove the DC-in bracket

Make sure the following FRU (or CRU) has been removed.

“Remove the lower case” on page 29

Step 1. Disconnect the battery pack cable from the system board (1). Then, remove two screws (2) and remove the DC-in bracket (3).

Attention: Use your fingernail to pull the connector to unplug it. Do not pull the cable.

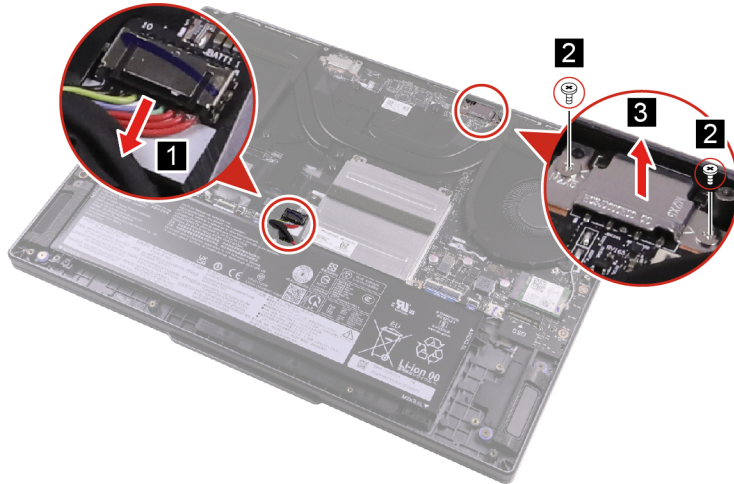


Figure 22. Disconnect the battery pack cable, remove two screws, and remove the DC-in bracket

Screw specifications	Number of screws	Torque force (kgf.cm)
M2 × L5	2	1.85 ± 0.15

Go to <https://support.lenovo.com/partslookup> to look up the Lenovo part numbers of the following replacement part:

DC-in bracket

Remove the thermal module

Make sure the following FRU (or CRU) has been removed.

“Remove the lower case” on page 29

Step 1. Disconnect the battery pack cable from the system board (1).

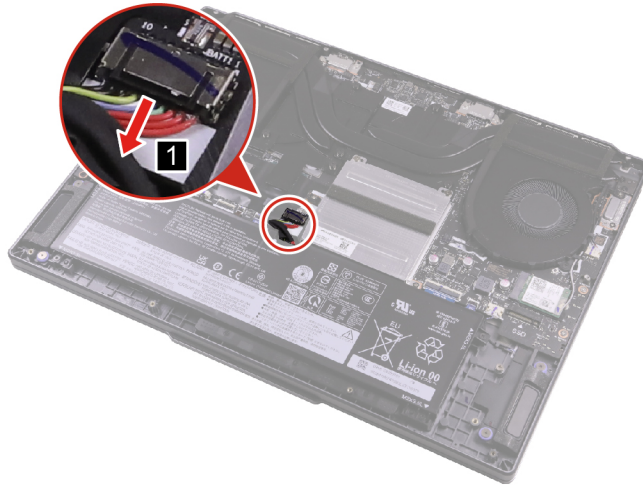


Figure 23. Disconnect the battery pack cable

Step 2. Remove four screws and the system board hook (2 and 3). Then, remove the memory shielding (4).

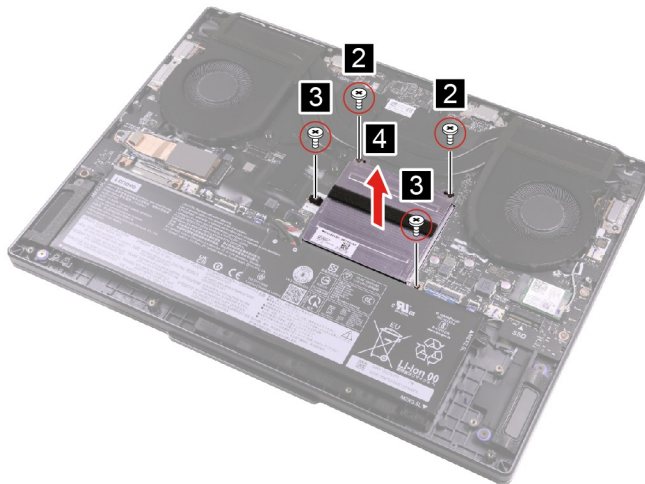


Figure 24. Remove four screws, the system board hook, and the memory shielding

Screw specifications	Number of screws	Torque force (kgf.cm)
M2 × L2	2	1.85 ± 0.15
M2 × L5	2	1.85 ± 0.15

Step 3. Disconnect the thermal module cables from the system board (5). Then, remove six screws (6 and 7).

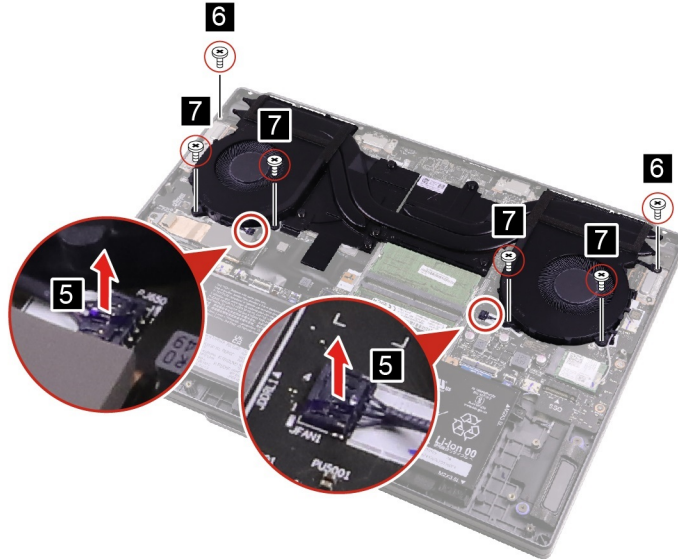


Figure 25. Disconnect the thermal module cables and remove six screws

Screw specifications (ThinkBook 16p G6 IAX)	Number of screws	Torque force (kgf.cm)
M2 × L5	2	1.85 ± 0.15
M2 × L3.5	4	1.85 ± 0.15

Screw specifications (ThinkBook 16p G6 ADR)	Number of screws	Torque force (kgf.cm)
M2 × L5	6	1.85 ± 0.15

Step 4. Loosen six screws in alphabetical order (from 8a to 8f), carefully release the Wi-Fi card antennas and the tweeters cable (if any) from the cable guide around the thermal module (9), and then remove the thermal module (10).

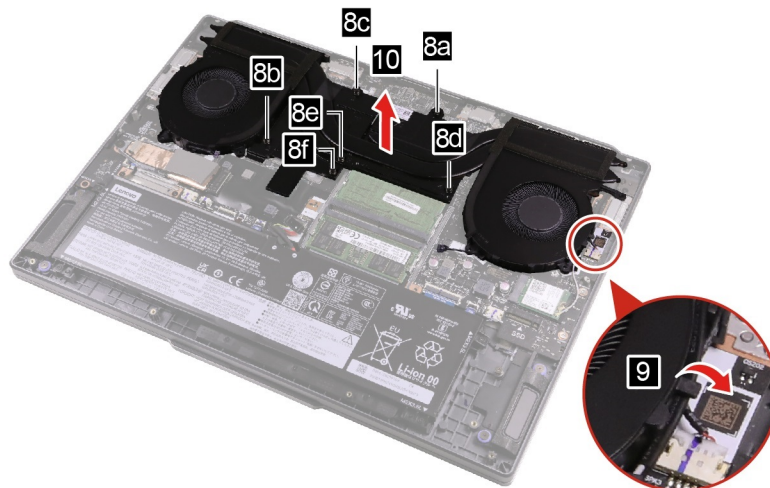


Figure 26. Loosen six screws, release the cables from the cable guide, and remove the thermal module

Go to <https://support.lenovo.com/partslookup> to look up the Lenovo part numbers of the following replacement parts:

- Thermal module
- System board hook
- Memory shielding

Remove the touchpad board cable

Make sure the following FRUs (or CRUs) have been removed.

- “Remove the lower case” on page 29
- “Remove the battery pack” on page 30

Step 1. Disconnect the touchpad board cable from the touchpad board and the system board (1 and 2). Then, remove the touchpad board cable (3).

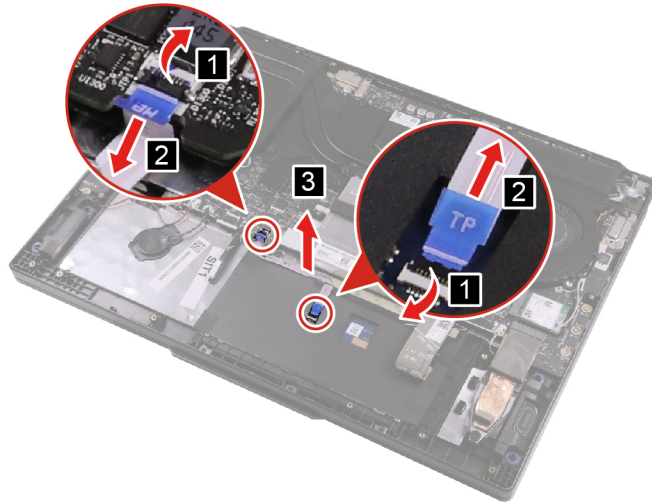


Figure 27. Disconnect and remove the touchpad board cable

Go to <https://support.lenovo.com/partslookup> to look up the Lenovo part numbers of the following replacement part:

Touchpad board cable

Remove the forcepad board cables (for ThinkBook 16p G6 IAX)

Make sure the following FRUs (or CRUs) have been removed.

“Remove the lower case” on page 29

“Remove the battery pack” on page 30

Step 1. Disconnect the forcepad board cables from the forcepad board and the system board (1 and 2). Then, remove the forcepad board cables (3).

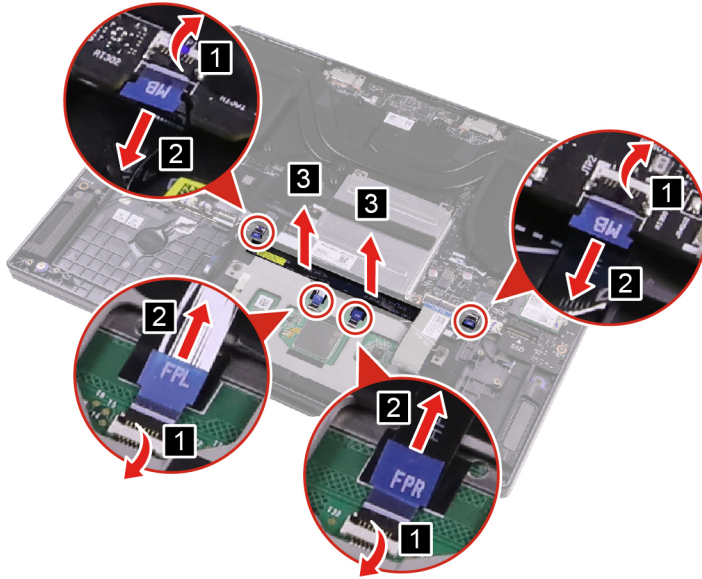


Figure 28. Disconnect and remove the forcepad board cables

Go to <https://support.lenovo.com/partslookup> to look up the Lenovo part numbers of the following replacement part:

Left forcepad board cable

Right forcepad board cable

Remove the coin-cell battery

Make sure the following FRUs (or CRUs) have been removed.

“Remove the lower case” on page 29

“Remove the battery pack” on page 30

Step 1. Disconnect the coin-cell battery cable from the system board (1). Then, carefully remove the coin-cell battery (2).

Attention: Use your fingernail to pull the connector to unplug it. Do not pull the cable.

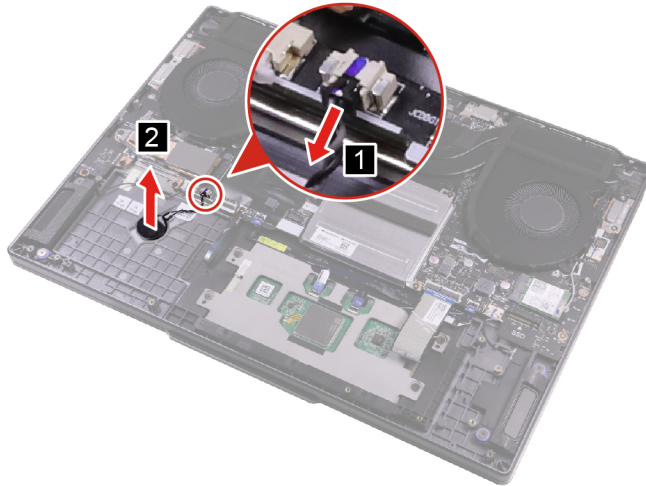


Figure 29. Remove the coin-cell battery

Go to <https://support.lenovo.com/partslookup> to look up the Lenovo part numbers of the following replacement part:

Coin-cell battery

Remove the USB-A bracket

Make sure the following FRUs (CRUs) have been removed:

“Remove the lower case” on page 29

“Remove the thermal module” on page 41

Step 1. Remove one screw (1). Then, remove the USB-A bracket (2).

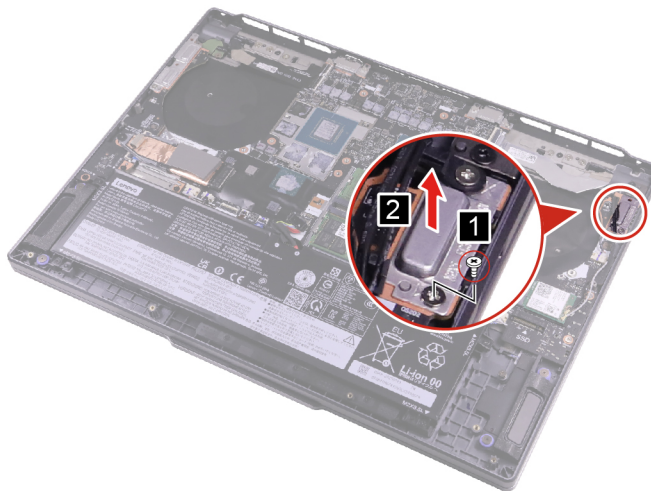


Figure 30. Remove one screw and the USB-A bracket

Screw specifications	Number of screws	Torque force (kgf.cm)
M2 x L5	1	1.85 ± 0.15

Go to <https://support.lenovo.com/partslookup> to look up the Lenovo part numbers of the following replacement part:

USB-A bracket

Remove the I/O board and the bracket

Make sure the following FRUs (or CRUs) have been removed.

- “Remove the lower case” on page 29
- “Remove the battery pack” on page 30
- “Remove the solid-state drives” on page 31
- “Remove the DNPU (for ThinkBook 16p G6 IAX)” on page 35
- “Remove the thermal module” on page 41

Step 1. Remove one screw (1) or two screws (1). Then, remove the I/O bracket (2).

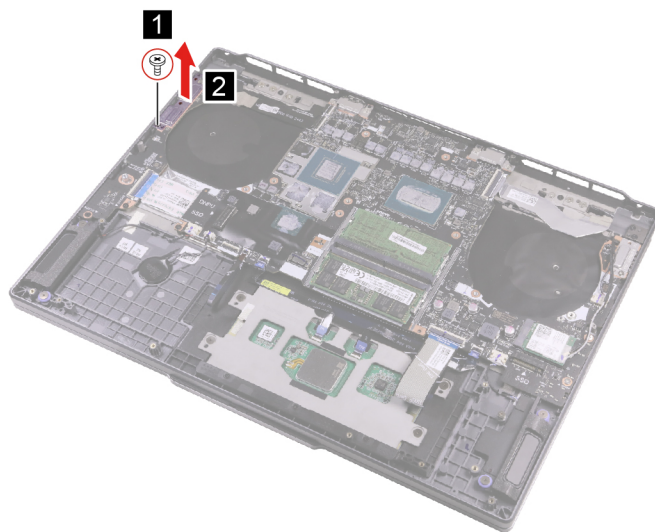


Figure 31. ThinkBook 16p G6 IAX: Remove one screw and the I/O bracket

Screw specifications (ThinkBook 16p G6 IAX)	Number of screws	Torque force (kgf.cm)
M2 x L5	1	1.85 ± 0.15

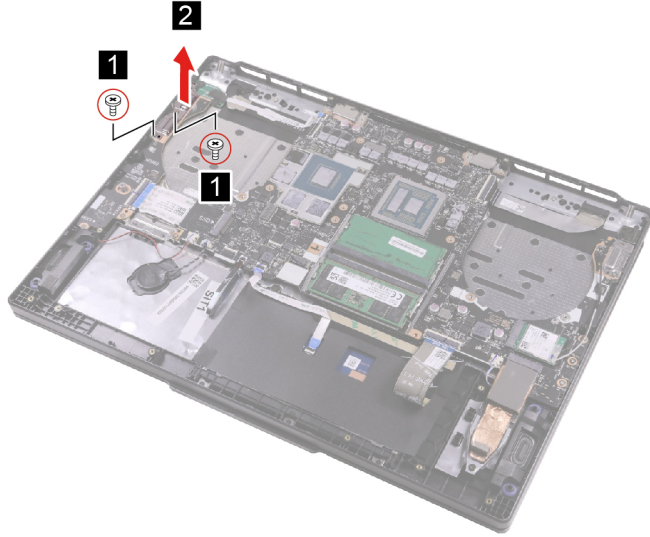


Figure 32. ThinkBook 16p G6 ADR: Remove two screws and the I/O bracket

Screw specifications (ThinkBook 16p G6 ADR)	Number of screws	Torque force (kgf.cm)
M2 x L5	2	1.85 ± 0.15

Step 2. Disconnect the I/O board cable from the I/O board (3 and 4).

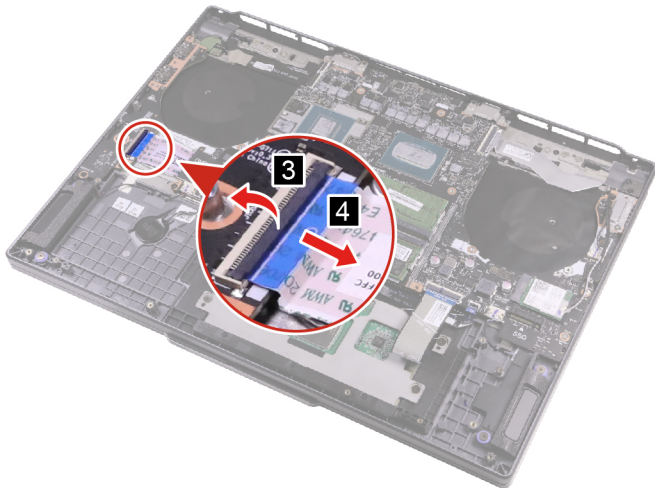


Figure 33. Disconnect the I/O board cable from the I/O board

Step 3. Remove two screws (5). Then, remove the I/O board (6).

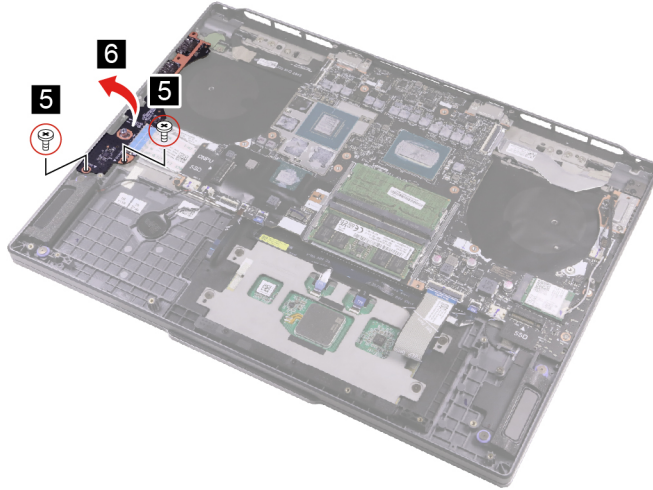


Figure 34. Remove two screws and the I/O board

Screw specifications	Number of screws	Torque force (kgf.cm)
M2 × L3.5	2	1.85 ± 0.15

Go to <https://support.lenovo.com/partslookup> to look up the Lenovo part numbers of the following replacement parts:

- I/O board
- I/O bracket

Remove the fingerprint sensor module (for ThinkBook 16p G6 IAX)

Make sure the following FRUs (or CRUs) have been removed.

- “Remove the lower case” on page 29
- “Remove the battery pack” on page 30
- “Remove the solid-state drives” on page 31
- “Remove the DNPU (for ThinkBook 16p G6 IAX)” on page 35
- “Remove the thermal module” on page 41
- “Remove the I/O board and the bracket” on page 48

Step 1. Disconnect the fingerprint sensor cable and the POGO cable from the system board (1 and 2). Then, carefully lift the POGO cable (3).

Note: After replacing the fingerprint sensor module, cover it with the POGO cable.

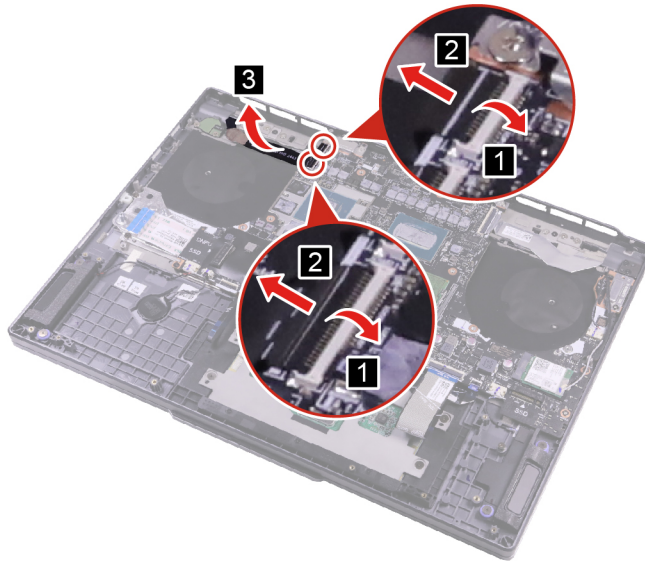


Figure 35. Disconnect the fingerprint sensor cable and the POGO cable and then lift the POGO cable

Step 2. Remove two screws (4). Then, carefully lift the fingerprint sensor module (5).

CAUTION:

The fingerprint sensor module includes a secondary flex cable that is pre-routed to the upper case. This connector will automatically release during the module removal. To avoid damaging the connector, do not apply vertical force while detaching the module. Make sure that the connector is fully detached before lifting the module.

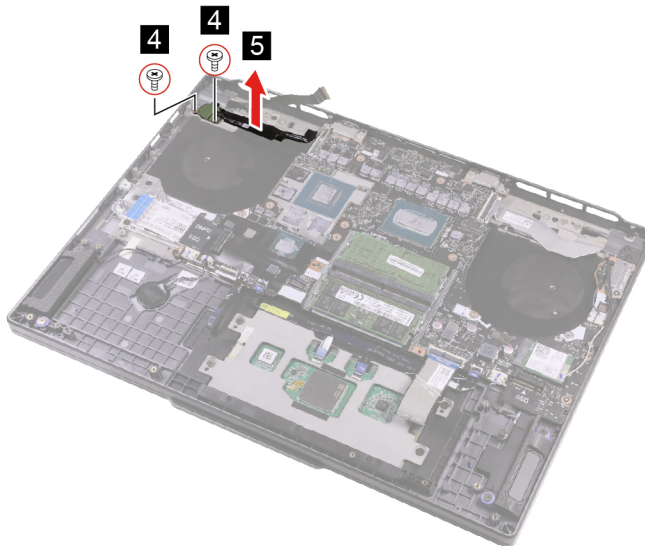


Figure 36. Remove two screws and lift the fingerprint sensor module

Screw specifications	Number of screws	Torque force (kgf.cm)
M2 × L2	2	1.85 ± 0.15

Go to <https://support.lenovo.com/partslookup> to look up the Lenovo part numbers of the following replacement part:

Fingerprint sensor module

Remove the power button and the power cable (for ThinkBook 16p G6 ADR)

Make sure the following FRUs (or CRUs) have been removed.

“Remove the lower case” on page 29

“Remove the battery pack” on page 30

“Remove the solid-state drives” on page 31

“Remove the thermal module” on page 41

“Remove the I/O board and the bracket” on page 48

Step 1. Disconnect the power cable from the system board (1 and 2). Then, remove two screws (3) and remove the power cable (4).

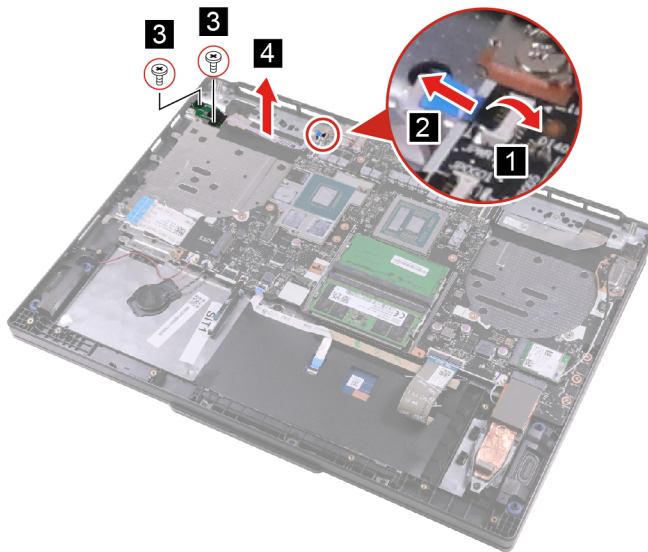


Figure 37. Disconnect the power cable, remove two screws, and remove the power cable

Screw specifications	Number of screws	Torque force (kgf.cm)
M2 × L2	2	1.85 ± 0.15

Step 2. Remove the power button (5).

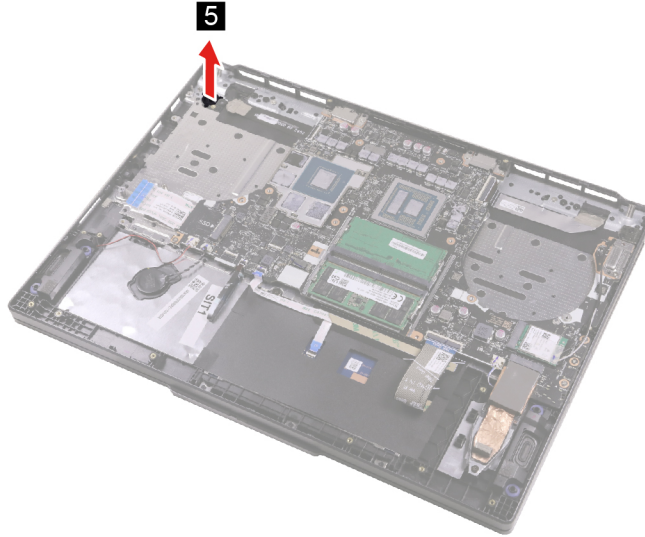


Figure 38. Remove the power button

Go to <https://support.lenovo.com/partslookup> to look up the Lenovo part numbers of the following replacement part:

- Power button
- Power cable

Remove the system board and the I/O board cable

Make sure the following FRUs (or CRUs) have been removed.

- “Remove the lower case” on page 29
- “Remove the battery pack” on page 30
- “Remove the solid-state drives” on page 31
- “Remove the DNPU (for ThinkBook 16p G6 IAX)” on page 35
- “Remove the Wi-Fi card” on page 36
- “Remove the memory shielding and the memory module” on page 38
- “Remove the HDMI bracket” on page 39
- “Remove the DC-in bracket” on page 40
- “Remove the thermal module” on page 41
- “Remove the USB-A bracket” on page 47

Step 1. Disconnect the fingerprint sensor cable or power button cable, POGO cable, I/O board cable, woofer connectors, coin-cell battery connector, keyboard backlight cable, touchpad board or forcepad board cables, keyboard cable, tweeter connector, and EDP cable from the system board (1 and 2).



Figure 39. Disconnect all connections from the system board

Step 2. Remove three or four screws (3 and 4). Then, remove the system board (5).

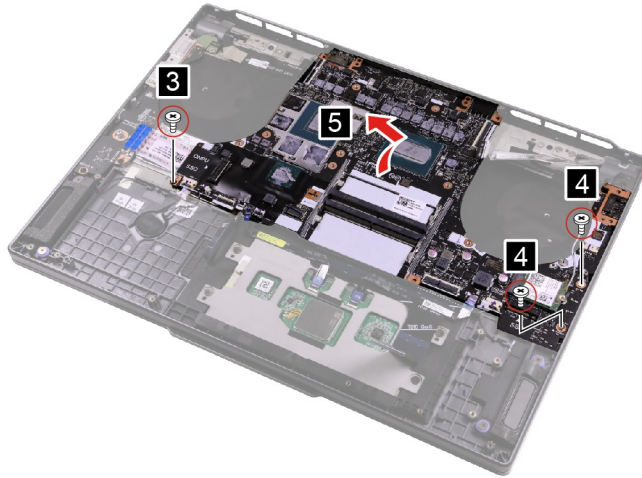


Figure 40. ThinkBook 16p G6 IAX: Remove three screws and remove the system board

Screw specifications (ThinkBook 16p G6 IAX)	Number of screws	Torque force (kgf.cm)
M2 × L3.5	1	1.85 ± 0.15
M2 × L5	2	1.85 ± 0.15

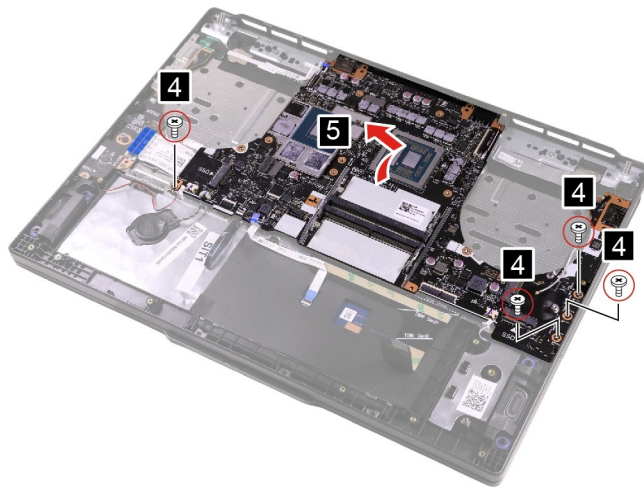


Figure 41. ThinkBook 16p G6 ADR: Remove four screws and remove the system board

Screw specifications (ThinkBook 16p G6 ADR)	Number of screws	Torque force (kgf.cm)
M2 × L5	4	1.85 ± 0.15

Step 3. Turn over the system board. Then, disconnect the I/O board cable from the system board (6 and 7).

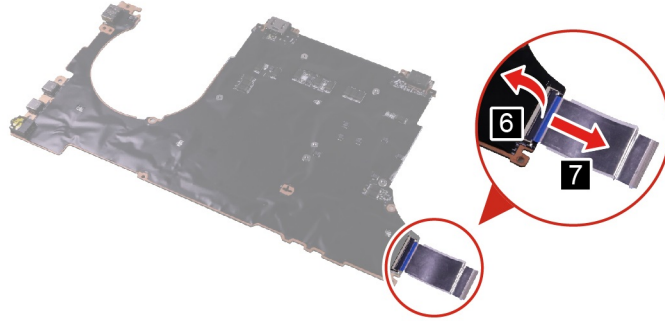


Figure 42. Turn over the system board and disconnect the I/O board cable

Go to <https://support.lenovo.com/partslookup> to look up the Lenovo part numbers of the following replacement parts:

- System board
- System board hook
- I/O board cable

Write key product information to a replacement system board

Some key product information and settings are stored in the ROMs of the PC's system board. The information and settings are essential for using and servicing a Lenovo PC. After replacing a system board for a Lenovo PC, you need to use a Lenovo-provided software tool to write key information—including machine type model (MTM), serial number (SN), and product name—as well as settings such as keyboard language to the replacement system board.

For service technicians, go to <https://support.lenovo.com/us/en/solutions/ht102004> for detailed instructions on how to create and use a Golden Key U1 tool or a normal BIOS tool.

For users, [follow these steps](#):

Attention: Take extra caution when entering the MTM and SN and when selecting the product name and keyboard language. Carefully verify these details before committing the writing action. Once recorded on the system board, they cannot be altered. Consult Lenovo service if you are uncertain about the MTM, SN, and product name for your PC.

- Step 1. Connect the ac power adapter and turn on the computer.
- Step 2. Download the tool package and double-click the WinMBDWizard.exe file to run the tool. To download the tool, go to <https://support.lenovo.com/solutions/HT516532>.
- Step 3. Follow the on-screen instructions to input the MTM and SN, [then](#) select the product name and keyboard language of the computer.
- Step 4. Click **Start Update** to update the product information.
- Step 5. Click **Yes** in the confirmation window to continue the update.
- Step 6. Click **Finish** to close the tool.
- Step 7. Click **Yes** in the confirmation window to restart the computer and apply the configuration on the system board.

Note: Do not turn off the computer or disconnect the computer from ac power during the whole process.

Remove the speakers (for ThinkBook 16p G6 IAX)

Note: The product supports the woofers and the tweeters. Remove both if needed.

Note: For some models, the speakers are not classified as FRU, but are supplied as part of the upper case.

Remove the woofers (near the battery)

Make sure the following FRUs (CRUs) have been removed.

“Remove the lower case” on page 29

“Remove the battery pack” on page 30

“Remove the solid-state drives” on page 31

Step 1. If a solid-state drive is installed in the lower corner slot, carefully lift the mylar (1) after removing the solid-state drive.

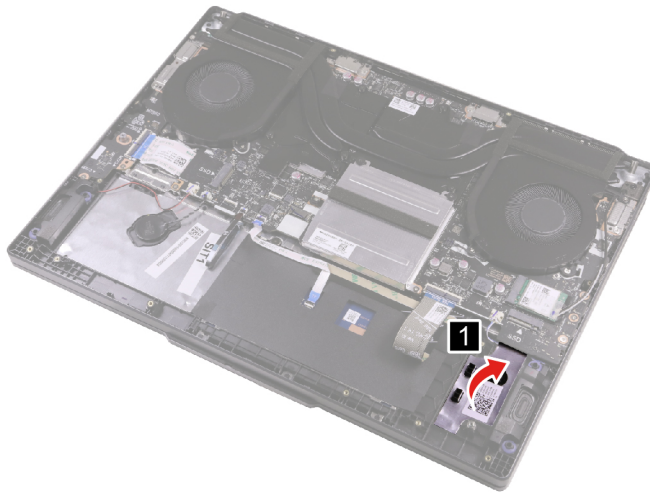


Figure 43. Lift the mylar

Step 2. Disconnect the woofer connectors from the system board (2). Then, remove four screws (3) and carefully remove the woofers (4).

Attention: Use your fingernail to pull the connector to unplug it. Do not pull the cable.

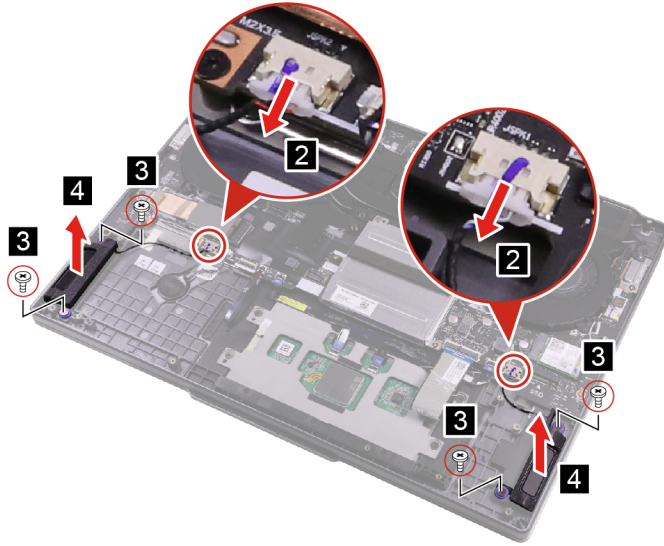


Figure 44. Disconnect the woofer connectors and remove the woofers

Screw specifications	Number of screws	Torque force (kgf.cm)
M1.6 × L1.5	4	1.0 ± 0.15

Go to <https://support.lenovo.com/partslookup> to look up the Lenovo part numbers of the following replacement part:

Speakers (woofers)

Remove the tweeters (under the system board)

Make sure the following FRUs (CRUs) have been removed.

- “Remove the lower case” on page 29
- “Remove the battery pack” on page 30
- “Remove the solid-state drives” on page 31
- “Remove the DNPU (for ThinkBook 16p G6 IAX)” on page 35
- “Remove the Wi-Fi card” on page 36
- “Remove the memory shielding and the memory module” on page 38
- “Remove the HDMI bracket” on page 39
- “Remove the DC-in bracket” on page 40
- “Remove the thermal module” on page 41
- “Remove the USB-A bracket” on page 47
- “Remove the system board and the I/O board cable” on page 53

Step 1. Carefully lift the EDP cable (1).

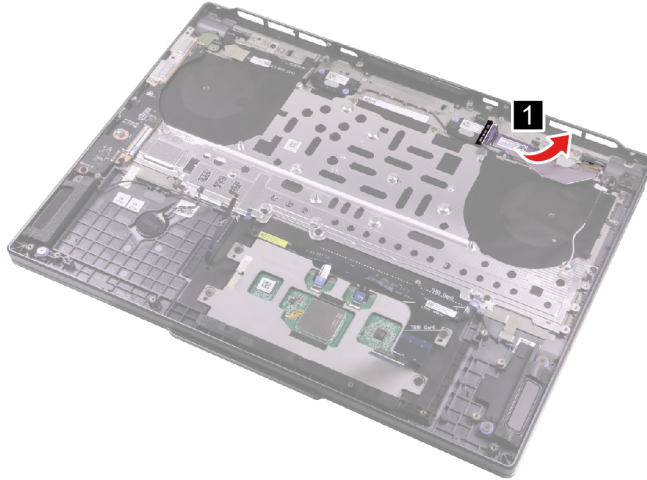


Figure 45. Lift the EDP cable

Step 2. Release the tweeters cable from the cable guide (2). Then, carefully remove the tweeters (3).

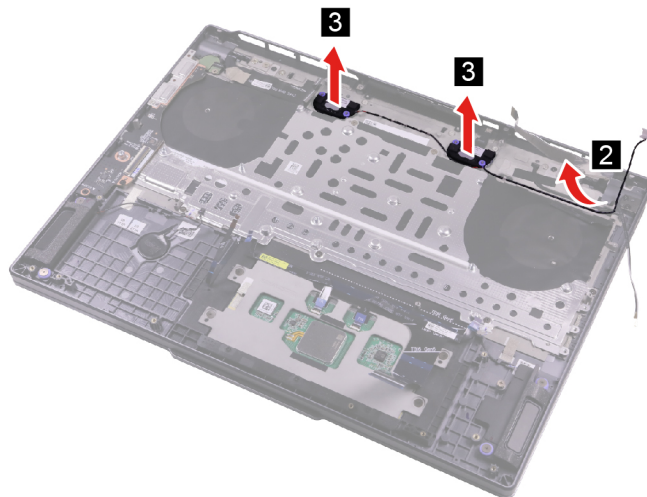


Figure 46. Remove the tweeters

Go to <https://support.lenovo.com/partslookup> to look up the Lenovo part numbers of the following replacement part:

Speakers (tweeters)

Remove the thermal fin

Make sure the following FRUs (CRUs) have been removed.

“Remove the lower case” on page 29

“Remove the battery pack” on page 30

“Remove the solid-state drives” on page 31

“Remove the DNPU (for ThinkBook 16p G6 IAX)” on page 35

- “Remove the Wi-Fi card” on page 36
- “Remove the memory shielding and the memory module” on page 38
- “Remove the HDMI bracket” on page 39
- “Remove the DC-in bracket” on page 40
- “Remove the thermal module” on page 41
- “Remove the USB-A bracket” on page 47
- “Remove the system board and the I/O board cable” on page 53

Step 1. Remove the thermal fin (1).

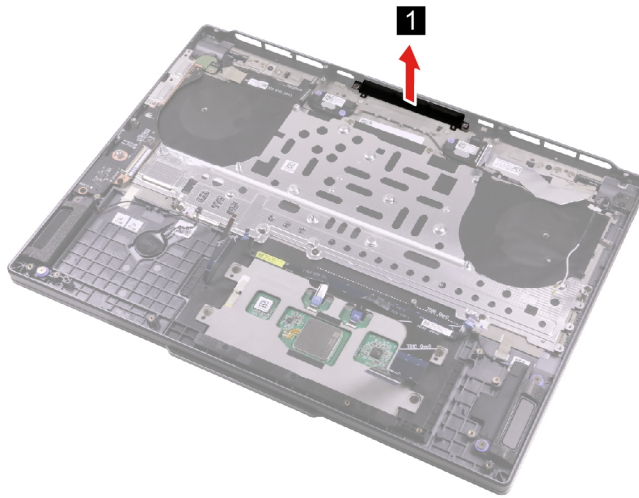


Figure 47. Remove the thermal fin

Go to <https://support.lenovo.com/partslookup> to look up the Lenovo part numbers of the following replacement part:

Thermal fin

Remove the hinge cap

Make sure the following FRUs (or CRUs) have been removed.

- “Remove the lower case” on page 29
- “Remove the battery pack” on page 30
- “Remove the solid-state drives” on page 31
- “Remove the DNPU (for ThinkBook 16p G6 IAX)” on page 35
- “Remove the Wi-Fi card” on page 36
- “Remove the memory shielding and the memory module” on page 38
- “Remove the HDMI bracket” on page 39
- “Remove the DC-in bracket” on page 40
- “Remove the thermal module” on page 41
- “Remove the USB-A bracket” on page 47
- “Remove the system board and the I/O board cable” on page 53

“Remove the thermal fin” on page 59

Step 1. Remove five screws (1).

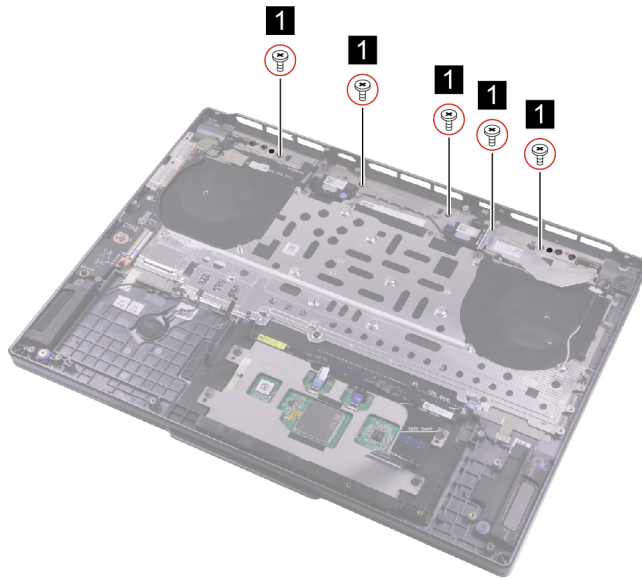


Figure 48. Remove five screws

Screw specifications (ThinkBook 16p G6 IAX)	Number of screws	Torque force (kgf.cm)
M2 × L5	5	1.85 ± 0.15

Screw specifications (ThinkBook 16p G6 ADR)	Number of screws	Torque force (kgf.cm)
M2 × L6.5	5	1.85 ± 0.15

Step 2. Turn over the computer. Then, remove the hinge cap (2).



Figure 49. Remove the hinge cap

Go to <https://support.lenovo.com/partslookup> to look up the Lenovo part numbers of the following replacement part:

Hinge cap

Remove the LCD module

Make sure the following FRUs (CRUs) have been removed.

- “Remove the lower case” on page 29
- “Remove the battery pack” on page 30
- “Remove the solid-state drives” on page 31
- “Remove the DNPU (for ThinkBook 16p G6 IAX)” on page 35
- “Remove the Wi-Fi card” on page 36
- “Remove the HDMI bracket” on page 39
- “Remove the DC-in bracket” on page 40
- “Remove the thermal module” on page 41
- “Remove the USB-A bracket” on page 47
- “Remove the system board and the I/O board cable” on page 53
- “Remove the thermal fin” on page 59
- “Remove the hinge cap” on page 60

Step 1. Remove six screws (1 and 2).

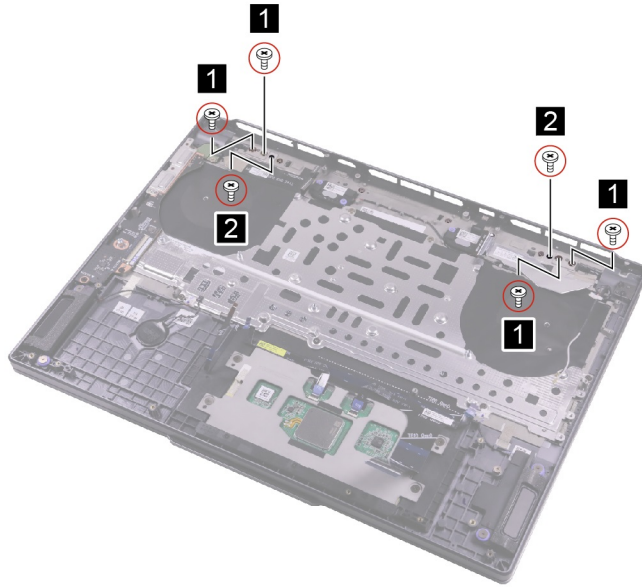


Figure 50. Remove six screws

Screw specifications (ThinkBook 16p G6 IAX)	Number of screws	Torque force (kgf.cm)
M2.5 × L4.5	4	1.85 ± 0.15
M2 × L3.5	2	1.85 ± 0.15

Screw specifications (ThinkBook 16p G6 ADR)	Number of screws	Torque force (kgf.cm)
M2.5 × L4.5	4	1.85 ± 0.15
M2 × L5	2	1.85 ± 0.15

Step 2. Carefully lift the EDP cable and the POGO cable (3).

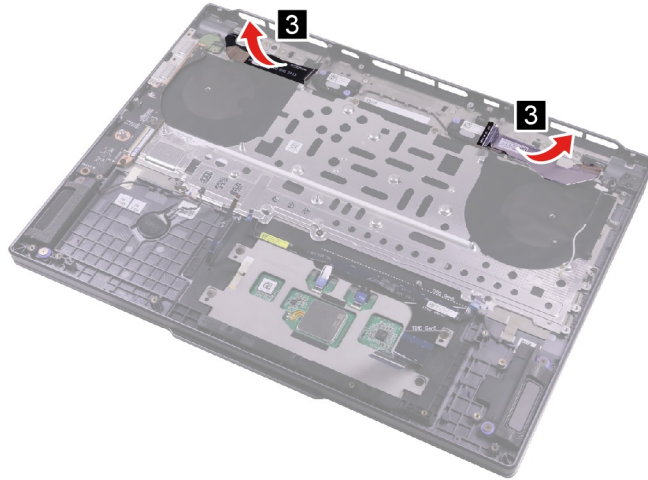


Figure 51. Lift the EDP cable and the POGO cable

Step 3. Turn over the computer. Then, carefully remove the LCD module (4).



Figure 52. Remove the LCD module

Notes: For LCD panel with the factory color calibration feature, do the following to install new color profiles:

1. Connect your computer to the network.
2. Go to https://pcsupport.lenovo.com/downloads/x_rite_color_tool to download the ColorTool.ZIP file.
3. Unzip to local drive and double-click the ColorTool.EXE file. Then, follow the on-screen instruction to input the display serial number and click “Submit”. When the new color profiles are installed successfully, all steps will be marked with “√”.
4. After LCD panel replacement, press Shift + Delete to permanently delete the ColorTool folder on the customer’s device.

You will also find the instructions that come with the LCD panel.

Go to <https://support.lenovo.com/partslookup> to look up the Lenovo part numbers of the following replacement part:

LCD module

Remove the upper case (with keyboard)

Make sure the following FRUs (CRUs) have been removed.

- “Remove the lower case” on page 29
- “Remove the battery pack” on page 30
- “Remove the solid-state drives” on page 31
- “Remove the DNPU (for ThinkBook 16p G6 IAX)” on page 35
- “Remove the Wi-Fi card” on page 36
- “Remove the memory shielding and the memory module” on page 38
- “Remove the HDMI bracket” on page 39
- “Remove the DC-in bracket” on page 40
- “Remove the thermal module” on page 41
- “Remove the touchpad board cable” on page 44
- “Remove the forcepad board cables (for ThinkBook 16p G6 IAX)” on page 45
- “Remove the coin-cell battery” on page 46
- “Remove the USB-A bracket” on page 47
- “Remove the I/O board and the bracket” on page 48
- “Remove the fingerprint sensor module (for ThinkBook 16p G6 IAX)” on page 50
- “Remove the power button and the power cable (for ThinkBook 16p G6 ADR)” on page 52
- “Remove the system board and the I/O board cable” on page 53
- “Remove the speakers (for ThinkBook 16p G6 IAX)” on page 57
- “Remove the thermal fin” on page 59
- “Remove the hinge cap” on page 60
- “Remove the LCD module” on page 62

Go to <https://support.lenovo.com/partslookup> to look up the Lenovo part numbers of the following replacement part:

Upper case (with keyboard)

Disassemble the LCD module

Before disassembling the LCD module, make sure it has been detached from the upper case assembly.

Remove the LCD bezel

Make sure the following FRUs (CRUs) have been removed.

- “Remove the lower case” on page 29
- “Remove the LCD module” on page 62

Step 1. Lift the LCD bezel from the inner side sequentially (from 1 to 4). Then, remove the LCD bezel.

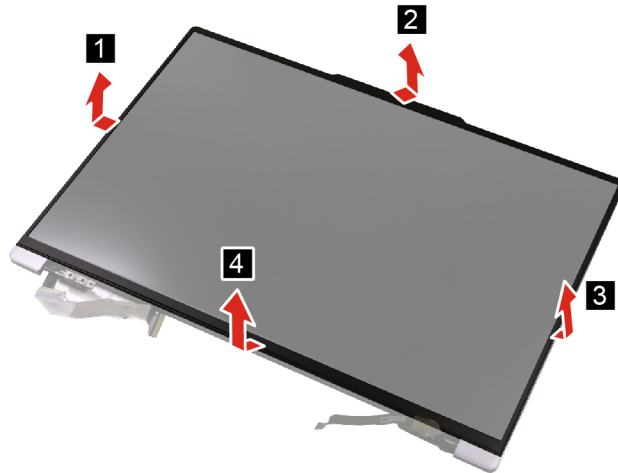


Figure 53. Lift and remove the LCD bezel

Note: The LCD bezel is fragile and should be replaced if damaged.

Go to <https://support.lenovo.com/partslookup> to look up the Lenovo part numbers of the following replacement part:

LCD bezel

Remove the LCD panel

Make sure the following FRUs (CRUs) have been removed.

“Remove the lower case” on page 29

“Remove the LCD module” on page 62

“Remove the LCD bezel” on page 65

Step 1. Remove the strip covers (1).



Figure 54. Remove the strip covers

Step 2. Pull out five pieces of the removable tape (2). Then, carefully lift the LCD panel (3).

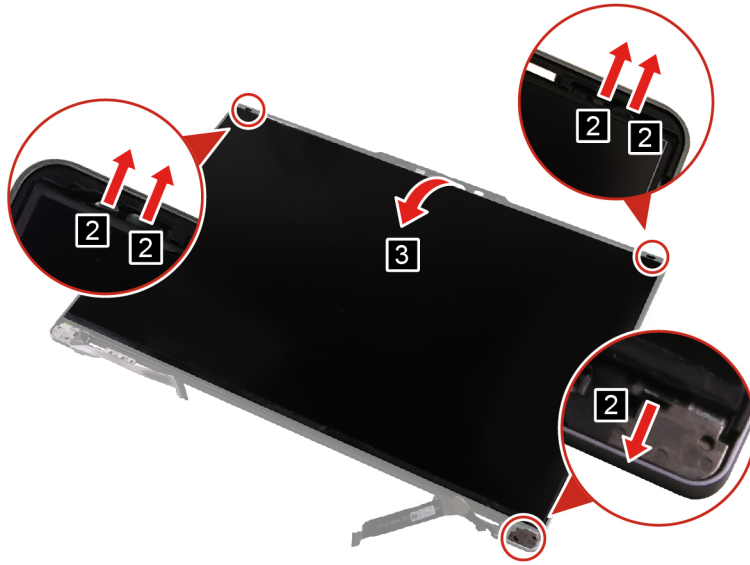


Figure 55. Pull out five pieces of removable tape and lift the LCD panel

Step 3. Peel back the mylar (4). Then, disconnect the EDP cable (5 and 6) and remove the LCD panel (7).

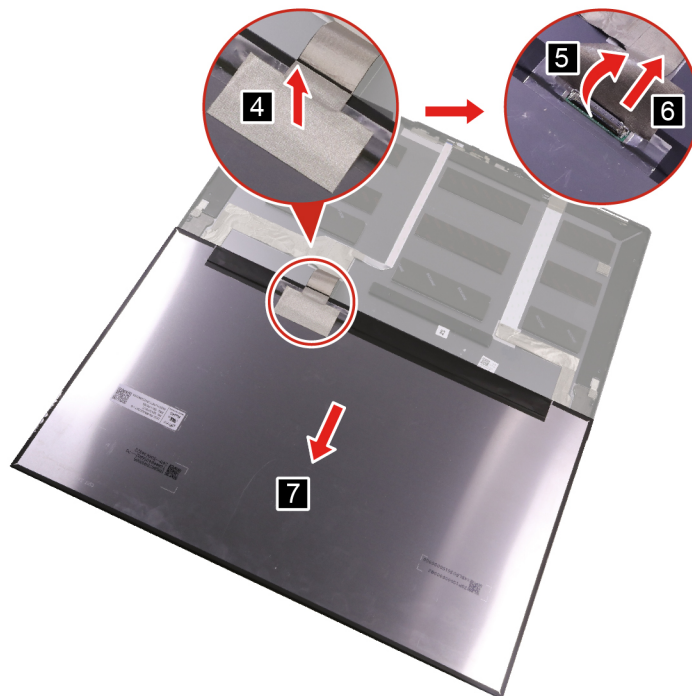


Figure 56. Disconnect the EDP cable and remove the LCD panel

Notes: When you turn on the computer and the LCD goes black, run LCD Self-Test to help you determine whether the LCD functions normally.

To run LCD Self-Test:

1. Ensure that the computer is connected to ac power. Then, press the power button for about seven seconds to turn off the computer.
2. Press fn, left Ctrl, and the power button at the same time. If the computer displays five solid colors in sequence across the entire screen, it indicates that the LCD functions normally.
3. The test lasts for about 20 seconds and then exits automatically. You also can press the power button to exit the test.

Go to <https://support.lenovo.com/partslookup> to look up the Lenovo part numbers of the following replacement part:

LCD panel

Remove the camera shutter

Make sure the following FRUs (CRUs) have been removed.

- “Remove the lower case” on page 29
- “Remove the LCD module” on page 62
- “Remove the LCD bezel” on page 65
- “Remove the LCD panel” on page 66

Step 1. Remove the camera shutter (1).

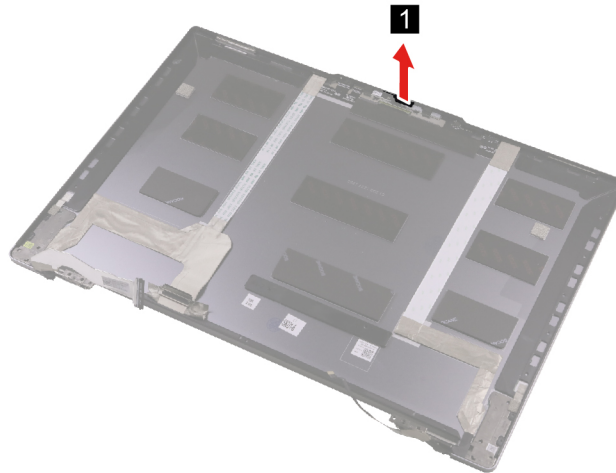


Figure 57. Remove the camera shutter

Go to <https://support.lenovo.com/partslookup> to look up the Lenovo part numbers of the following replacement part:

Camera shutter

Remove the ALS rubber (for ThinkBook 16p G6 IAX)

Make sure the following FRUs (CRUs) have been removed.

- “Remove the lower case” on page 29
- “Remove the LCD module” on page 62

“Remove the LCD bezel” on page 65

“Remove the LCD panel” on page 66

Step 1. Remove the ALS rubber (1).

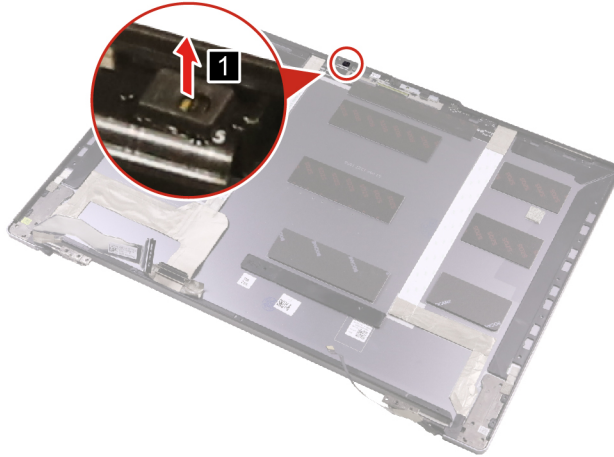


Figure 58. Remove the ALS rubber

Go to <https://support.lenovo.com/partslookup> to look up the Lenovo part numbers of the following replacement part:

ALS rubber

Remove the microphone rubbers

Make sure the following FRUs (CRUs) have been removed.

“Remove the lower case” on page 29

“Remove the LCD module” on page 62

“Remove the LCD bezel” on page 65

“Remove the LCD panel” on page 66

“Remove the camera shutter” on page 68

Step 1. Remove the microphone rubbers (1).

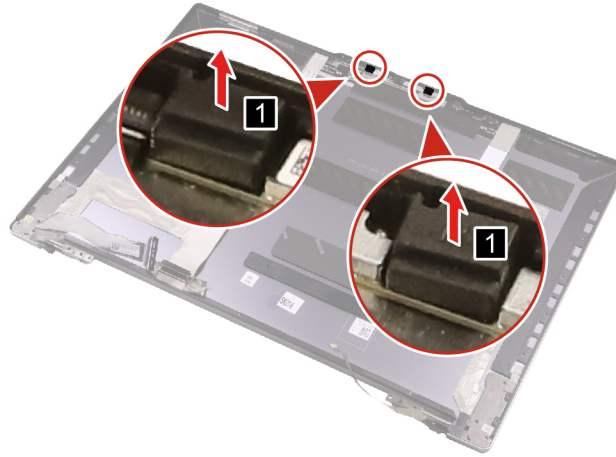


Figure 59. Remove the microphone rubbers

Note: The two microphone rubbers are marked with embossed “R” (Right) and “L” (Left) identifiers. When installing the microphone rubbers, ensure the correct orientation.

Go to <https://support.lenovo.com/partslookup> to look up the Lenovo part numbers of the following replacement part:

Microphone rubber

Remove the IR sponges (for ThinkBook 16p G6 IAX)

Make sure the following FRUs (CRUs) have been removed.

- “Remove the lower case” on page 29
- “Remove the LCD module” on page 62
- “Remove the LCD bezel” on page 65
- “Remove the LCD panel” on page 66
- “Remove the camera shutter” on page 68

Step 1. Remove the IR sponges (1).

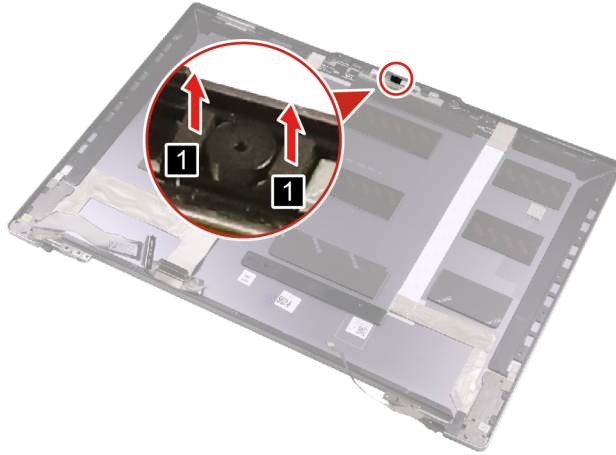


Figure 60. Remove the IR sponges

Go to <https://support.lenovo.com/partslookup> to look up the Lenovo part numbers of the following replacement part:

IR sponge

Remove the camera board

Make sure the following FRUs (CRUs) have been removed.

- “Remove the lower case” on page 29
- “Remove the LCD module” on page 62
- “Remove the LCD bezel” on page 65
- “Remove the LCD panel” on page 66
- “Remove the camera shutter” on page 68
- “Remove the microphone rubbers” on page 69
- “Remove the IR sponges (for ThinkBook 16p G6 IAX)” on page 70

Step 1. Disconnect the camera cable (1 and 2). Then, remove the camera board (3).

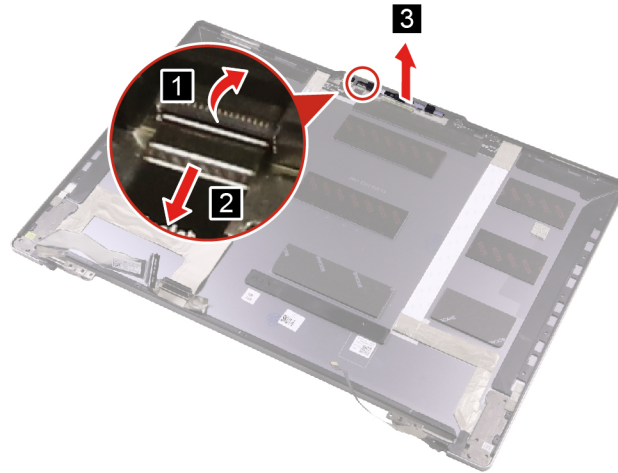


Figure 61. Disconnect the camera cable and remove the camera board

Go to <https://support.lenovo.com/partslookup> to look up the Lenovo part numbers of the following replacement part:

Camera board

Appendix A. Label locations

Label locations on the top side of the upper case (for ThinkBook 16p G6 IAX)

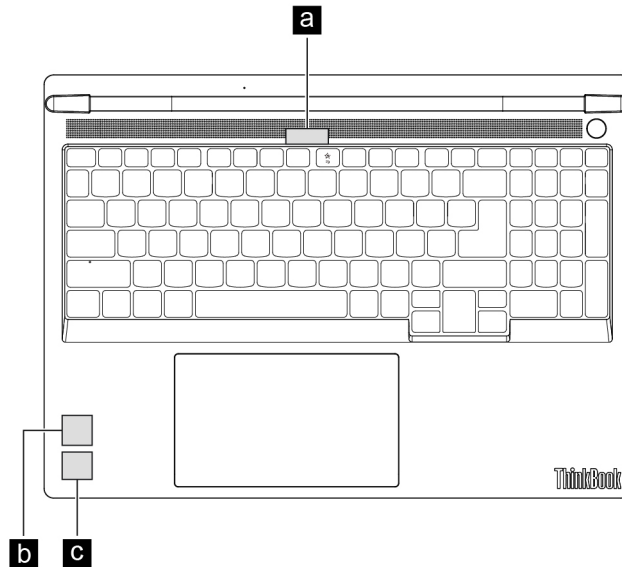


Figure 62. Label layout on the top side of the upper case (for ThinkBook 16p G6 IAX)

Labels attached to the upper case are country/region specific. Make sure to apply the appropriate labels to the replacement upper case.

Table 5. All upper case labels (for ThinkBook 16p G6 IAX)

Label	Label description	Applied country/region	Label dimensions
a	AI PC label C cover PRC	All	25.5 mm × 9 mm
b	GPU label	All	18 mm × 18 mm
c	Intel CPU label	All	18.0086 mm × 18.0086 mm

Label locations on the top side of the upper case (for ThinkBook 16p G6 ADR)

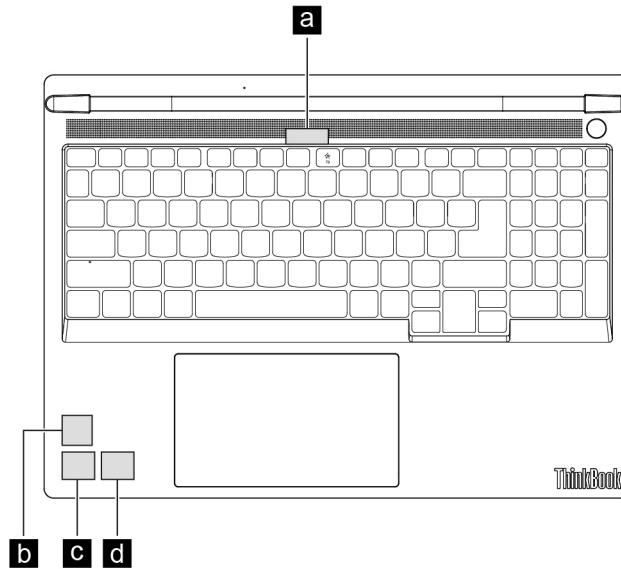


Figure 63. Label layout on the top side of the upper case (for ThinkBook 16p G6 ADR)

Labels attached to the upper case are country/region specific. Make sure to apply the appropriate labels to the replacement upper case.

Table 6. All upper case labels (for ThinkBook 16p G6 ADR)

Label	Label description	Applied country/region	Label dimensions
a	AI PC label C cover PRC	All	25.5 mm × 9 mm
b	GPU label	All	18 mm × 18 mm
c	AMD CPU label	All	19.53 mm × 16.51 mm
d	AMD CPU label	All	19.53 mm × 16.51 mm

Label locations on the back side of the lower case

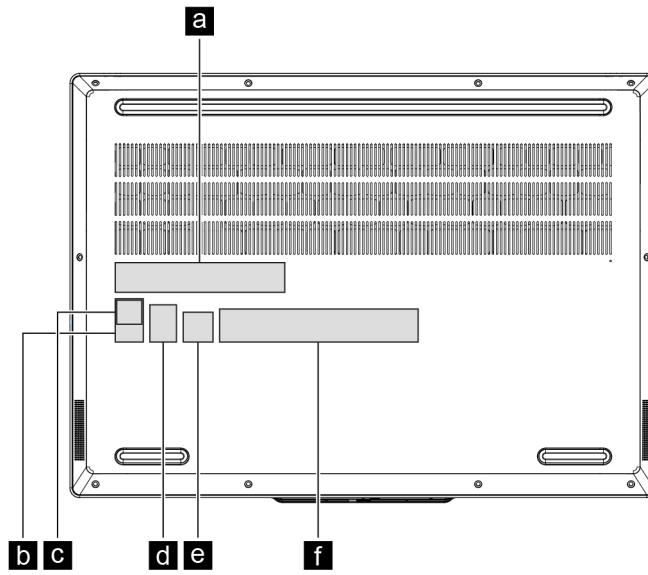


Figure 64. Label layout on the back side of the lower case

Labels attached to the lower case are country/region specific. Make sure to apply the appropriate labels to the replacement lower case.

Table 7. All base cover labels

Label	Label description	Applied country/region	Label dimensions
a	Rating label	All	102.5 mm × 17.8 mm
b	QR label	All	17 mm × 26.1 mm
c	Transparent raised label	EAA	17 mm × 17 mm
d	OS label	All	16.077 mm × 22.501 mm
e	CO2 label	All	18 mm × 18 mm
f	RTC battery label	US	120 mm × 20 mm

Note: Depending on the country/region where the computer is purchased, the upper case and the lower case may include one or more of the above listed labels. For the laser etched label, print the label and apply it to the replacement case according to the label location illustrated above. The artworks for the laser etched labels are country/region specific and can be found in Appendix B “Artworks for laser etched labels (for ThinkBook 16p G6 IAX)” on page 77 and Appendix C “Artworks for laser etched labels (for ThinkBook 16p G6 ADR)” on page 81.

Appendix B. Artworks for laser etched labels (for ThinkBook 16p G6 IAX)

Brazil and Argentina

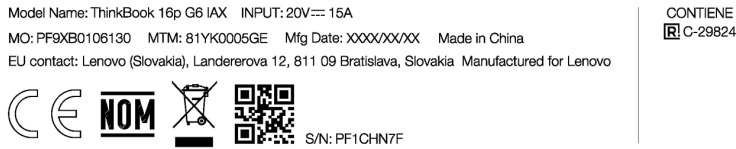


Figure 65. Artworks for the laser etched label used in Brazil and Argentina

India

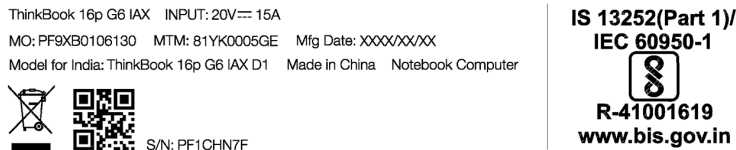


Figure 66. Artworks for the laser etched label used in India

Japan



Figure 67. Artworks for the laser etched label used in Japan

South Africa



Figure 72. Artworks for the laser etched label used in South Africa

Taiwan



Figure 73. Artworks for the laser etched label used in Taiwan

USCA

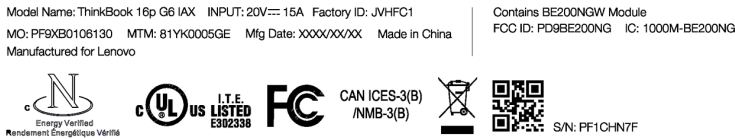


Figure 74. Artworks for the laser etched label used in USCA

Vietnam



Figure 75. Artworks for the laser etched label used in Vietnam

WW

筆記型電腦 Model Name (型號): ThinkBook 16p G6 IAX INPUT (電壓/電流): 20V= 1.5A
MO: FF9XB0106130 MTM: 81YK0005GE Mfg Date: XXXX/XX/XX Made in China 中國製造
EU contact: Lenovo (Slovakia), Landererova 12, 811 09 Bratislava, Slovakia Manufactured for Lenovo
UK contact: Lenovo, Redwood, Crockford Lane, Basingstoke, RG24 8WQ, UK



Figure 76. Artworks for the laser etched label used in WW

Appendix C. Artworks for laser etched labels (for ThinkBook 16p G6 ADR)

Morocco, EMAT, and France

Model Name: ThinkBook 16p G6 ADR INPUT: 20V \equiv 15A
 MO: PF9XB0106130 MTM: 81YK0005GE Mfg Date: XXXX/XX/XX Made in China
 EU contact: Lenovo (Slovakia), Landererova 12, 811 09 Bratislava, Slovakia Manufactured for Lenovo



Figure 77. Artworks for the laser etched label used in Morocco, EMAT, and France

PRC

便携式计算机 型号: ThinkBook 16p G6 ADR 输入电压/电流: 20V \equiv 15A CMIIT ID: 25J11874E819
 MO: PF9XB0106130 MTM: 81YK0005GE 生产日期: XXXX/XX/XX 服务网址: <https://support.lenovo.com.cn>
 联想(北京)有限公司 中国制造



Figure 78. Artworks for the laser etched label used in PRC

South Africa

Model Name: ThinkBook 16p G6 ADR INPUT: 20V \equiv 15A
 MO: PF9XB0106130 MTM: 81YK0005GE Mfg Date: XXXX/XX/XX Made in China
 EU contact: Lenovo (Slovakia), Landererova 12, 811 09 Bratislava, Slovakia Manufactured for Lenovo



Figure 79. Artworks for the laser etched label used in South Africa

WW

筆記型電腦 Model Name (型號): ThinkBook 16p G6 ADR INPUT (電壓/電流): 20V \equiv 15A
 MO: PF9XB0106130 MTM: 81YK0005GE Mfg Date: XXXX/XX/XX Made in China 中國製造
 EU contact: Lenovo (Slovakia), Landererova 12, 811 09 Bratislava, Slovakia Manufactured for Lenovo
 UK contact: Lenovo, Redwood, Crockford Lane, Basingstoke, RG24 8WQ, UK



Figure 80. Artworks for the laser etched label used in WW

Trademarks

LENOVO and the LENOVO logo are trademarks of Lenovo.

All other trademarks are the property of their respective owners. © 2025 Lenovo.

Lenovo