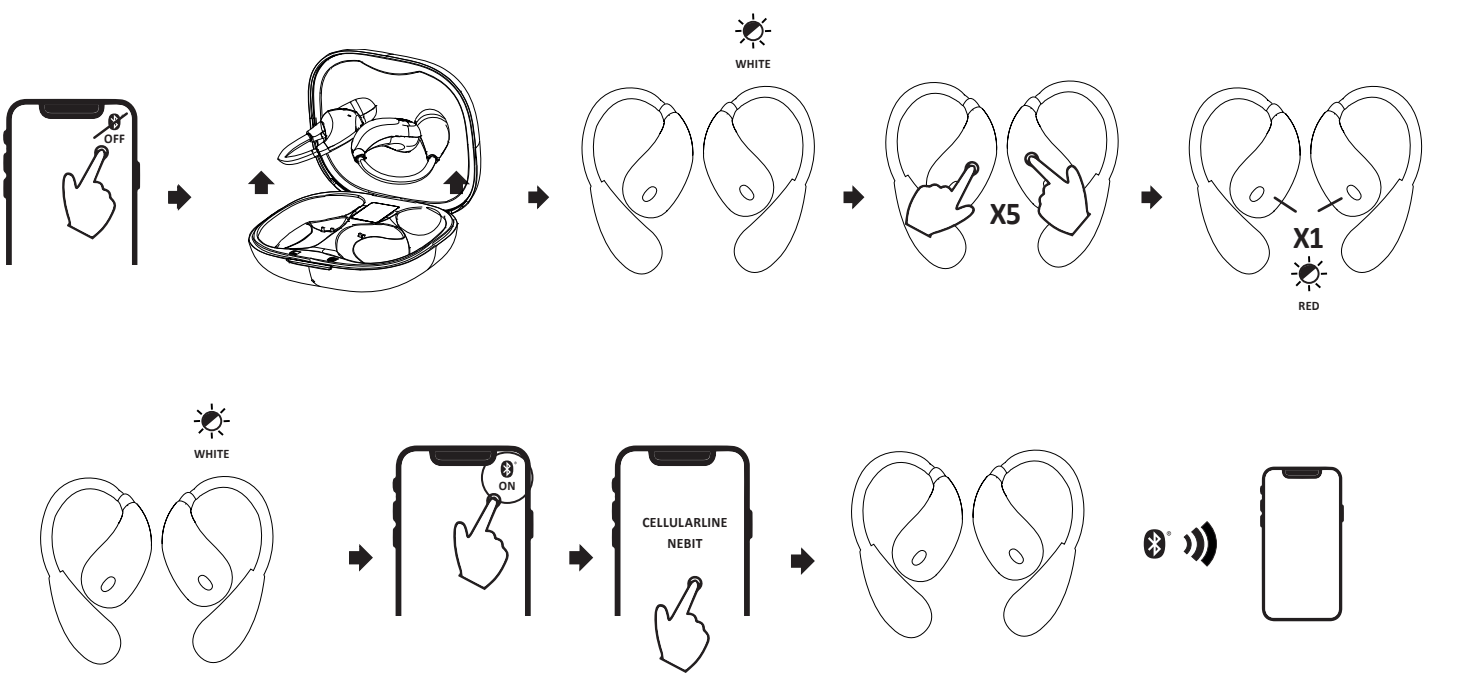
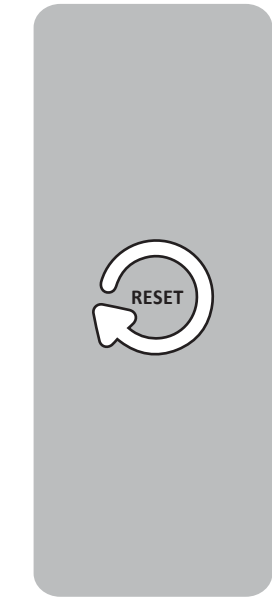
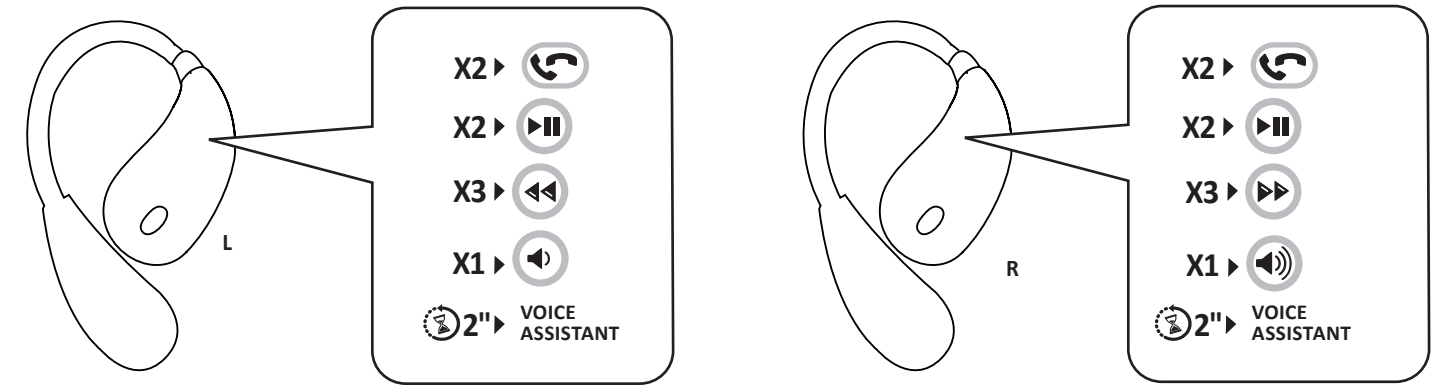
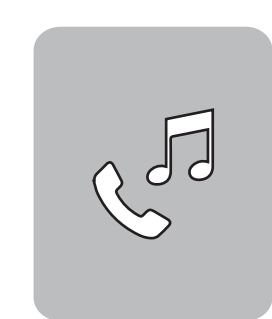
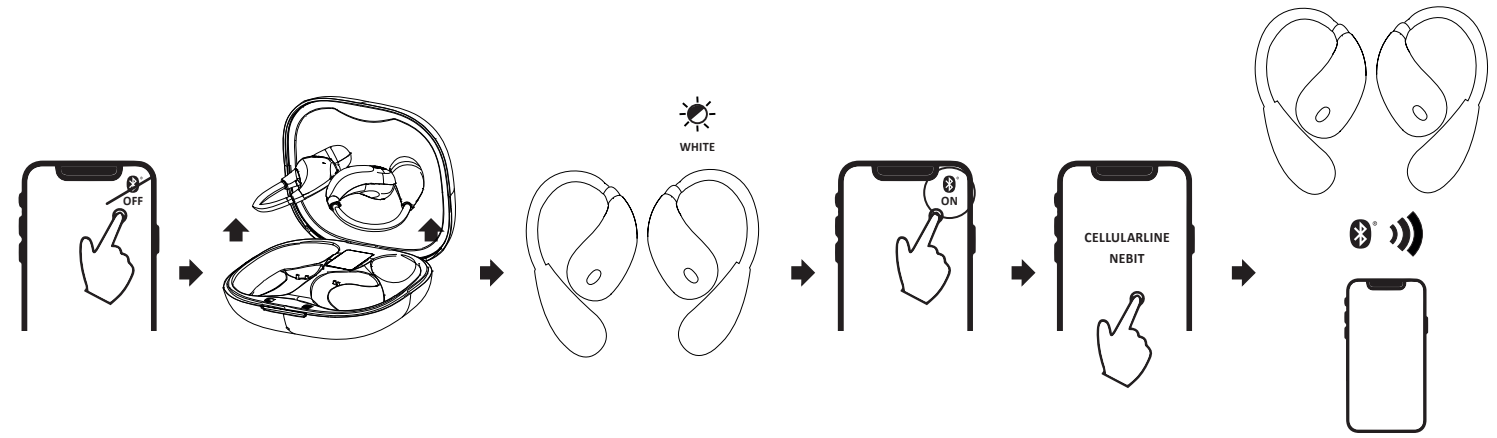
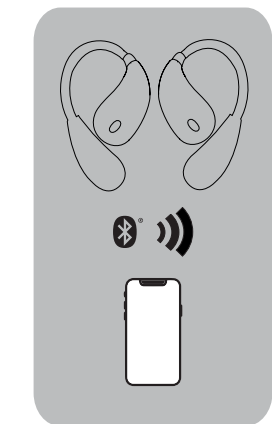
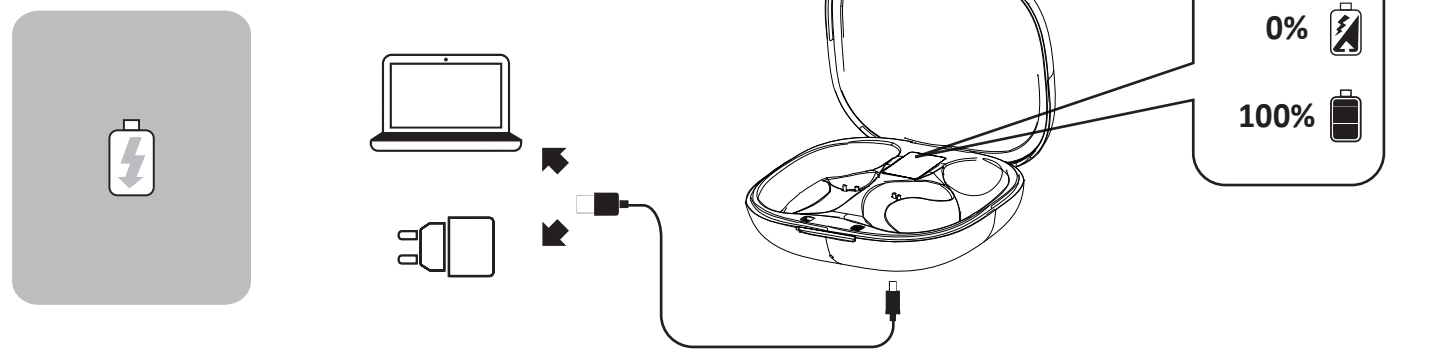
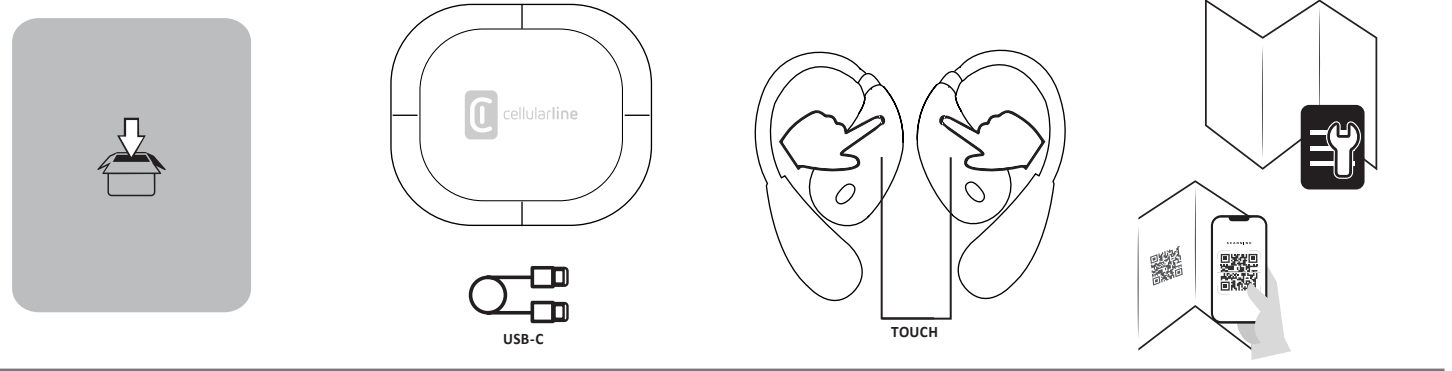


# NEBIT

BTNEBITWSK



**EN - Technical specifications:**

Bluetooth® / version: 5.4  
Supported profiles: HSP-HFP-A2DP-AVRCP  
Range / metres: 10  
Bluetooth® Frequency Range / Mhz: 2402-2480  
Battery Voltage / Volts: 3.7  
Battery capacity / mAh: 35x2  
Charging Case Battery Capacity / mAh: 300  
USB-C port Voltage (V) / Volts: 5  
USB-C port current (A) / Amperes: 0.5  
Maximum EIRP: 1.34dBm  
Earphone charging / hours/ approx.: 1  
Talk Time / hours/ approx.: 3  
Play Time / hours/ approx.: 4,5  
Charging Case / ore-circa: 2  
Weight / grams: 53

**IT - Specifiche tecniche:**

Bluetooth® / versione: 5.4  
Profili supportati: HSP-HFP-A2DP-AVRCP  
Portata / metri: 10  
Bluetooth® Frequency Range / Mhz: 2402-2480  
Battery Voltage / Volt: 3.7  
Battery Capacity / mAh: 35x2  
Charging Case Battery Capacity / mAh: 300  
USB-C port Voltage (V) / Volt: 5  
USB-C port current (A) / Ampere: 0.5  
Maximum EIRP: 1.34dBm  
Ricarica auricolari / ore-circa: 1  
Talk Time / ore-circa: 3  
Play Time / ore-circa: 4,5  
Ricarica Charging Case / ore-circa: 2  
Peso / grammi: 53

**FR - Caractéristiques techniques :**

Bluetooth® / version : 5.4  
Profils supportés : HSP-HFP-A2DP-AVRCP  
Portée / mètres : 10  
Bluetooth® Gamme de fréquences / Mhz : 2402-2480  
Tension de la batterie / Volt : 3.7  
Capacité de la batterie / mAh : 35x2  
Capacité de la batterie du Charging Case / mAh : 300  
Tension du port USB-C (V) / Volt : 5  
Courant du port USB-C (A) / Ampère : 0.5  
PIRE max : 1.34dBm  
Recharge des écouteurs / heures (environ) : 1  
Autonomie en conversation / heures (environ) : 3  
Autonomie en lecture / heures (environ) : 4,5  
Recharge du Charging Case / heures (environ) : 2  
Poids / grammes : 53

**DE - Technische Daten:**

Bluetooth® / Version: 5.4  
Unterstützte Profile: HSP-HFP-A2DP-AVRCP  
Reichweite / Meter: 10  
Bluetooth®-Frequenzbereich / Mhz: 2402-2480  
Akkuspannung / Volt: 3.7  
Akkukapazität / mAh: 35x2  
Charging Case Akkukapazität / mAh: 300  
USB-C-Anschluss Spannung (V) / Volt: 5  
USB-C-Anschluss Strom (A) / Ampere: 0.5  
Maximum EIRP: 1.34dBm  
Aufladen Headset / Stunden ca.: 1  
Gesprächszeit / Stunden ca.: 3  
Musikwiedergabezeit / Stunden ca.: 4,5  
Aufladen Charging Case / Stunden ca.: 2  
Gewicht / Gramm: 53

**ES - Especificaciones técnicas:**

Bluetooth® (versión): 5.4  
Perfiles admitidos: HSP-HFP-A2DP-AVRCP  
Alcance (metros): 10  
Rango de frecuencia Bluetooth® (MHz): 2402-2480  
Voltaje de la batería (volts): 3.7  
Capacidad de la batería (mAh): 35x2  
Capacidad de la batería del Charging Case (mAh): 300  
Voltaje del puerto USB-C (volts): 5  
Corriente del puerto USB-C (amperios): 0.5  
Potencia isotrópica radiada equivalente máxima (dBm): 1.34dBm  
Recarga de los auriculares (horas aprox.): 1  
Tiempo de conversación (horas aprox.): 3  
Tiempo de reproducción (horas aprox.): 4,5  
Recarga del Charging Case (horas aprox.): 2  
Peso (gramos): 53

**TR - Teknik özellikler:**

Bluetooth® / sürümü: 5.4  
Desteklenen profiller: HSP-HFP-A2DP-AVRCP  
Kapsama alanı / metre: 10  
Bluetooth® Frekans Aralığı / Mhz: 2402-2480  
Pili Voltajı / Volt: 3.7  
Pili Kapasitesi / mAh: 35x2  
Charging Case Pili Kapasitesi / mAh: 300  
USB-C port Gerilimi (V) / Volt: 5  
USB-C port akımı (A) / Amper: 0.5  
Maksimum EIRP: 1.34dBm  
Kulak içi kulaklıkların yeniden şarj edilmesi / saat-yaklaşık: 1  
Konuşma Süresi / saat-yaklaşık: 3  
Çalma Süresi / saat-yaklaşık: 4,5  
Charging Case Yeniden Şarj Edilmesi / saat-yaklaşık: 2  
Ağırlık / gram: 53

**NL - Technische kenmerken:**

Bluetooth® / versie: 5.4  
Ondersteunde profielen: HSP-HFP-A2DP-AVRCP  
Bereik / meter: 10  
Bluetooth® Frequentiebereik / Mhz: 2402-2480  
Batterijspanning / Volt: 3.7  
Batterijcapaciteit / mAh: 35x2  
Batterijcapaciteit oplaadcase / Volt: 300  
Spanning USB-C-poort (V) / Volt: 5  
Stroomsterkte USB-C-poort (A) / Ampère: 0.5  
Maximum EIRP: 1.34dBm  
Oplaatijd headset / uur-circa: 1  
Tijdsduur in gesprek / uur-circa: 3  
Afspeeltijd / uur-circa: 4,5  
Oplaatijd oplaadcase / uur-circa: 2  
Gewicht / gram: 53

**FI - Tekniset tiedot:**

Bluetooth® / versio: 5.4  
Tuetut profiilit: HSP-HFP-A2DP-AVRCP  
Kantavuus / metri: 10  
Bluetooth® taajuusalue / Mhz: 2402-2480  
Akun jännite / Voltti: 3.7  
Akun kapasiteetti / mAh: 35x2  
Charging Case -latauskotelon akun kapasiteetti / mAh: 300  
USB-C -portin jännite (V) / Volt: 5  
USB-C -portin virta (A) / Ampeeri: 0.5  
Maksimi EIRP: 1.34dBm  
Kuulokkeiden lataaminen / tuntia-noin: 1  
Puhelu / tuntia-noin: 3  
Musikinkuuntelu / tuntia-noin: 4,5  
Charging Case-latauskotelon lataaminen / tuntia-noin: 2  
Paino / grammaa: 53

**SV - Tekniska specifikationer:**

Bluetooth® / version: 5.4  
Profiler som stöds: HSP-HFP-A2DP-AVRCP  
Räckvidd / meter: 10  
Bluetooth® frekvensvidd / Mhz: 2402-2480  
Batterispänning / Volt: 3.7  
Batterikapacitet / mAh: 35x2  
Batterikapacitet för Charging Case / mAh: 300  
USB-C-portens spänning (V) / Volt: 5  
USB-C-portens ström (A) / Ampere: 0.5  
Maximal EIRP: 1.34dBm  
Laddning av hörlurar / timmar cirka: 1  
Samtalstid / timmar cirka: 3  
Speltid / timmar cirka: 4,5  
Laddning av laddningsfodral / timmar cirka: 2  
Vikt / gram: 53

**DA - Tekniske data:**

Bluetooth® / version: 5.4  
Understøttede profiler: HSP-HFP-A2DP-AVRCP  
Rækkevidde / meter: 10  
Bluetooth® frekvensområde / Mhz: 2402-2480  
Batterispænding / Volt: 3.7  
Batteriets kapacitet / mAh: 35x2  
Batterikapacitet charging case / mAh: 300  
USB-C-portens spænding (V) / Volt: 5  
USB-C-portens strøm (A) / Ampere: 0.5  
Maksimum EIRP: 1.34dBm  
Opladning af høretelefoner / timer-cirka: 1  
Taletid / timer-cirka: 3  
Afspilningstid / timer-cirka: 4,5  
Opladning af Charging Case / timer-cirka: 2  
Vægt / gram: 53

