



**WHITE**

DATASHEET

# CHERRY MX 8.2 PRO TMR TKL WIL RGB WHITE

## MAGNETIC / MECHANICAL GAMING KEYBOARD

Ultra-fast wireless. Extreme magnetic precision. Hot-swap between magnetic and mechanical switches. Built for gaming, ready for work. The MX 8.2 Pro TMR keyboard brings you the best of all worlds.

### MX 8.2 PRO TMR. MORE THAN MAGNETIC.

Ultra-fast wireless. Extreme magnetic precision. Hot-swap between magnetic and mechanical switches. Built for gaming, ready for work. The MX 8.2 Pro TMR keyboard brings you the best of all worlds.

### NEXT-LEVEL PRECISION: TMR WITH CHERRY MK MAGNETIC SWITCHES.

At the heart of the MX 8.2 Pro TMR are CHERRY MK switches powered by advanced TMR sensing. Unlike Hall sensors, TMR senses magnetic changes by measuring shifts in resistance, capturing input with 0.01 mm precision. The result: Sharper accuracy, lower power use and stronger in-game performance. CHERRY MK switches deliver ultra-responsive triggering, with a super-smooth linear feel.

### HOT-SWAP BETWEEN MAGNETIC AND MECHANICAL SWITCHES.

DualMaster means no compromises. MX 8.2 Pro TMR supports both CHERRY MK magnetic and MX mechanical switches. Magnetic precision for gaming. Tactile response for work. Swap anytime, with full flexibility across most keys\*. Find your perfect typing experience.

\*Magnetic-only hot-swap on the 3 rightmost key columns.

### CUSTOMIZE EVERY KEYSTROKE WITH CHERRY MAGCRATE SOFTWARE.

Take full control with CHERRY MagCrate. Adjust actuation points per key. Enable advanced features like RT, Dynamic Key travel (DKS), Mod Tap and SnapKey. Assign macros. Customize RGB lighting. And save it all onboard.

### ULTRA-FAST 8K WIRELESS + WIRED CONNECTIVITY.

While most magnetic switch keyboards stay wired, MX 8.2 Pro TMR goes wireless thanks to TMR's low-power efficiency. This keyboard supports USB, 2.4 GHz wireless and Bluetooth® connections. A high-frequency master chip powers both wired and wireless modes at an 8000 Hz polling rate. Reporting up to 8 times every millisecond, it enables your computer to react faster to every keystroke.

### 8000 MAH HIGH-CAPACITY BATTERY.

To keep you in the zone, MX 8.2 Pro TMR combines CHERRY's low-power magnetic sensing with an 8000 mAh battery for extended play across all modes. And when you need to plug in, you can keep playing without losing momentum.



## HIGHLIGHTS

- Tenkeyless design
- Triple connection modes: 2.4 GHz wireless, Bluetooth® and wired
- 8000 Hz wireless + wired polling rate
- CHERRY MK Crystal Magnetic switches
- Hot-swap between magnetic and mechanical switches
- PBT keycaps and 5-layer sound dampening

## SCOPE OF DELIVERY

- Manual
- Keyboard
- Dongle
- USB-A to USB-C Cable

# TECHNICAL DATA

## PRODUCT INFORMATION

Part number	G8E-3885HACAGB-0
EAN	4025112121197
Model number	G8E-3885
Colour	white
Product approvals	<ul style="list-style-type: none"><li>- CE</li><li>- China RoHS</li><li>- FCC</li><li>- UKCA</li></ul>
Operating system	<ul style="list-style-type: none"><li>- iOS</li><li>- Windows 7 or higher</li></ul>
Dimensions packaging	14,88 in × 7,32 in × 2,01 in   55.03 oz

## TEMPERATURE

Min. operating temperature	32 °F
Max. operating temperature	113 °F

## KEYBOARD

Keycap material	PBT
Key labeling	Double shot injection molding
Palm rest	Palm rest not available
Layout	GB (United Kingdom)
Number of keys	88
Illumination	RGB
Adjustable feet	yes

Status LEDs	in keys
Max. current consumption (mA) of keyboard	1,500 mA
Keyboard format	TKL (80%)
N-Key Rollover	yes
Anti-ghosting	yes
Key encryption	no
Internal memory	256 kBit
Windows key	with Windows key
Hotswap	yes
Stabilizers	<ul style="list-style-type: none"> <li>- Plate-mounted</li> <li>- Lubed</li> </ul>

## WIRELESS

USB dongle	yes
2.4 Ghz wireless connection	yes
Encryption in wireless mode	no
Latency	0.70 ms

## BLUETOOTH

Connection via Bluetooth	yes
Encryption in Bluetooth mode	yes
Bluetooth protocol	Bluetooth® 5.3

## BATTERY

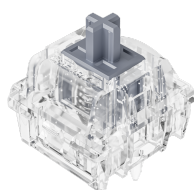
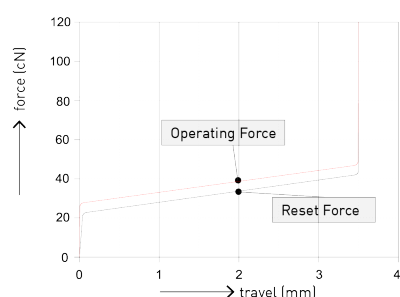
Number of batteries	1
Battery type	Li-Ion

Battery rechargeable	yes
Battery charging socket	USB-C
Maximum Charging Capability	6 mW
Minimum Charging Capability	1 mW

## CABLE

Polling rate	8000 Hz
--------------	---------

## SWITCHES:



Part number	MK1A-11LB
Type	magnetic, MK
Operating life	>100m.
Plunger colour	silver
Initial force	25 cN
Final force	50 cN
RGB	yes
Spring	Barrel geometry, stainless steel
Cover colour	transparent
Bottom housing colour	transparent

## © Cherry Americas

9522 58th Place Suite 100 • Kenosha WI 53144 • USA  
**cherry-world.com**

Sales Support · Technischer Support · eHealth Support

**Phone: 262.942.6508**  
**keyboardsupport@cherryamericas.com**

Errors, technical changes and delivery options reserved. Technical information refers only to the specification of the products. Properties are not guaranteed.