

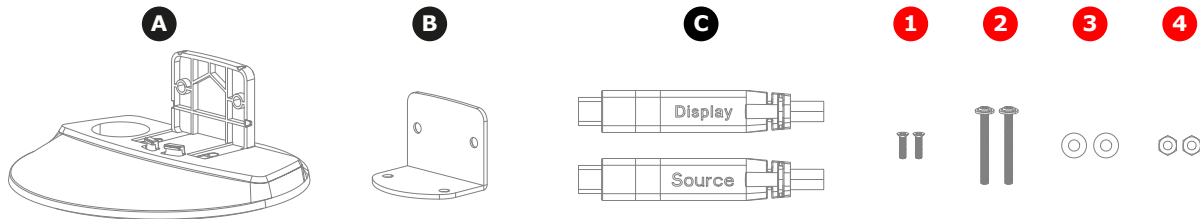


# Control Panel

## Quick start guide

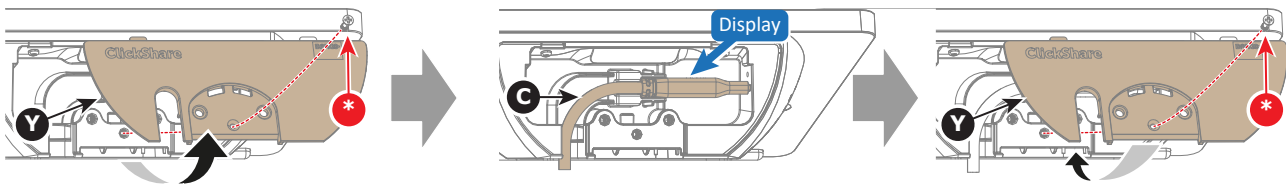
ClickShare

### Box content



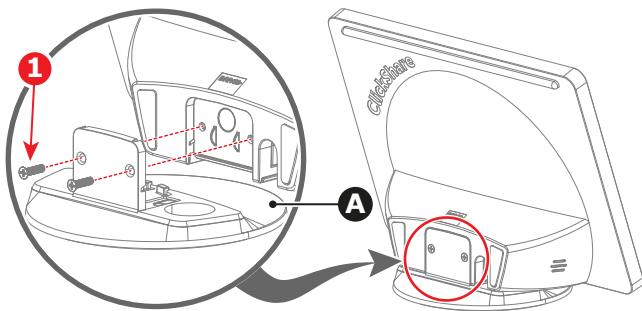
### How to connect the cable

1. Remove the bottom screw (\*) to remove the bottom cover (Y).
2. Connect the 'Display' side of the cable (C) to the Control Panel. Route the cable as illustrated.
3. Install the bottom cover (D) and secure it with the bottom screw (5).



### How to install standing on a table with the round stand

1. Install the round stand (A) on the Control Panel. Use the two short screws (1).
2. Place the assembled Control Panel in a desired location on the table.
3. Connect the 'Source' side of the cable (C) to the Base Unit.

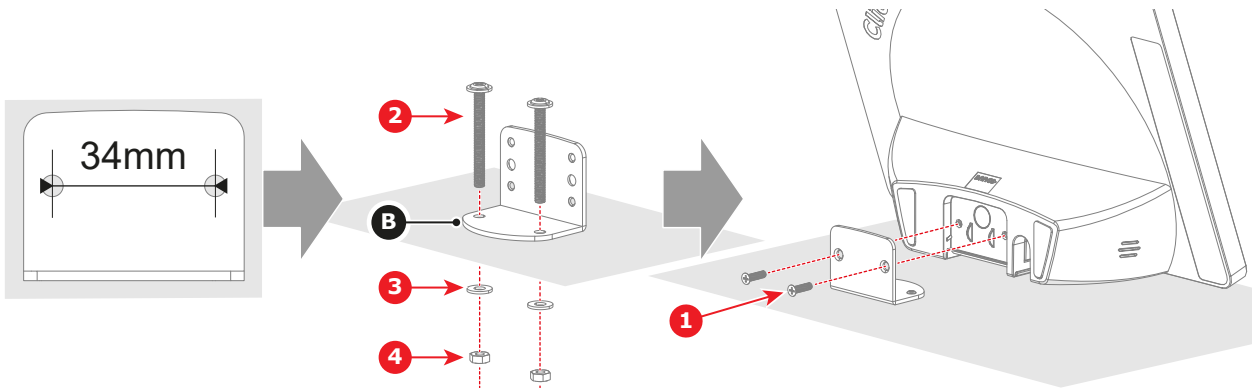


### How to secure to a table in the upright position

1. Drill two holes in the table at the desired location. Ensure the holes are spaced **34mm** apart.
2. Install the L-shape plate (B) in the desired location on the table. Use the two long screws (2), two washers (3) and two nuts (4).

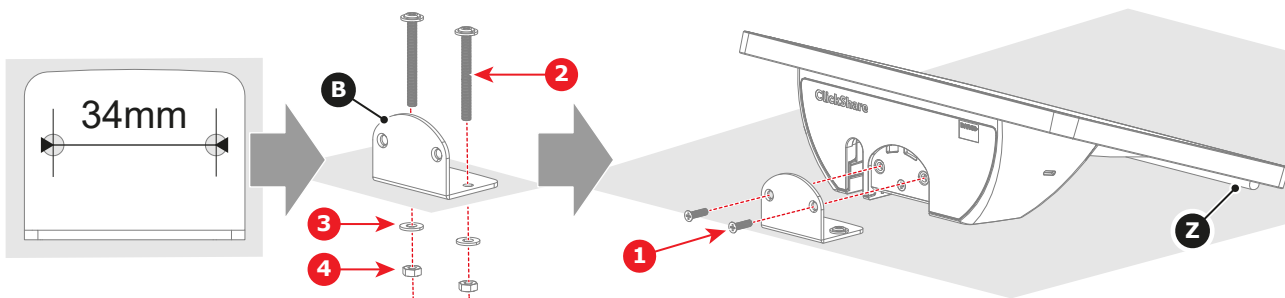


3. Install the Control Panel onto the prepared base as illustrated. Use the two short screws (1).
4. Connect the 'Source' side of the cable (C) to the Base Unit.



## How to secure to a table in the flat position

1. Drill two holes in the table at the desired location. Ensure the holes are spaced **34mm** apart.
2. Install the L-shape plate (B) in the desired location on the table. Use the two long screws (2), two washers (3) and two nuts (4).
3. Install the Control Panel onto the prepared base. Use the two short screws (1). Ensure the rubber strip (Z) makes contact with the table.
4. Connect the 'Source' side of the cable (C) to the Base Unit.



## How to secure to a wall

1. Drill two holes in the wall at the desired location. Ensure the holes are spaced **34mm** apart.
2. Install the L-shape plate (B) to the wall. Provide two **M4** screws at least **25.4mm** long (\*\*).
3. Install the Control Panel on the secured L-shape plate (B). Use the two short screws (1). Ensure the rubber strip (Z) makes contact with the wall.
4. Connect the 'Source' side of the cable (C) to the Base Unit.

