

# USER MANUAL

## *ProLite*

### LCD Monitor

ENGLISH

#### *ProLite XCB4594DQSU*

Thank you very much for choosing the iiyama LCD monitor.

We recommend that you take a few minutes to read carefully through this brief but comprehensive manual before installing and switching on the monitor. Please keep this manual in a safe place for your future reference.



## Dear user, we congratulate you on the purchase of your iiyama LCD.

For details on warranty and locally used pixel policies that apply directly after installation of your product please check the iiyama website.

**To report a fault, please contact  
your local support centre found at <https://iiyama.com>**

### Things to check before you call the iiyama information line

- | if the power cable is connected securely and turned on?
- | if the display has been turned on?
- | if the signal cable is connected securely and the correct input selected?
- | if the computer has been restarted with the display connected?
- | if the graphics card is correctly installed with the latest drivers possible?
- | if the correct native resolution has been selected via 'Display Properties'?
- | If the R/G/B signal configuration is correct?
- | if the displays On Screen Menu is shown?
- | if the correct brightness and contrast settings have been set?
- | if given display tolerances and compatibility have been considered?
- | if via the On Screen Menu you have performed a Factory Reset/Recall?

### Before reporting the screen defect, please prepare the following information/evidence:

- | model number \*
- | purchase receipt and serial number \*
- | name and address for collection
- | telephone/fax number, for availability during the day
- | convenient collection date (date, time)
- | short description of the defect

### Important Note:

If there is no fault found in the collected equipment after inspection, the transferring party shall incur charges for transport and administration.

If you have checked all of the above and there is still no picture, call our information line for assistance in your country.

### Feedback on health and safety issues

If you have any health and safety concerns or questions about the product (including when using the product), please contact iiyama support through our website. You can also contact us by calling +31 204460404. After receiving your feedback, we will ask the responsible unit to handle it as soon as possible and a dedicated person will get back to you. Your feedback will also be recorded and incorporated into our evaluation for improvements

\* see the identification plate on the back of the case.

## CE MARKING DECLARATION OF CONFORMITY

This LCD monitor complies with the requirements of the EC/EU Directive 2014/30/EU "EMC Directive", 2014/35/EU "Low Voltage Directive", 2009/125/EC "ErP Directive" and 2011/65/EU "RoHS Directive".

The electro-magnetic susceptibility has been chosen at a level that gives correct operation in residential areas, business and light industrial premises and small-scale enterprises, inside as well as outside of the buildings. All places of operation are characterized by their connection to the public low voltage power supply system.

IYAMA CORPORATION: Wijkmeerstraat 8, 2131 HA Hoofddorp, The Netherlands

Model No. : PL4594DQ



We recommend recycling of used product. Please contact your dealer or iiyama service center. Recycle information is obtained via the Internet, using the address: <https://iiyama.com>

You can access the Web page of different countries from there.

- We reserve the right to change specifications without notice.
- All trademarks used in this user manual are the property of their respective owners.
- Eprel registration number XCB4594DQSU-B1 : 2468748

# TABLE OF CONTENTS

FOR YOUR SAFETY .....	1
SAFETY PRECAUTIONS.....	1
SPECIAL NOTES ON LCD MONITORS .....	3
CUSTOMER SERVICE .....	3
CLEANING .....	4
BEFORE YOU OPERATE THE MONITOR .....	5
FEATURES.....	5
CHECKING THE CONTENTS OF THE PACKAGE .....	5
USING ARM OR STAND .....	6
FITTING AND REMOVAL OF STAND .....	7
CONTROLS AND CONNECTORS.....	10
CONNECTING YOUR MONITOR .....	11
COMPUTER SETTING .....	12
ADJUSTING THE HEIGHT AND THE VIEWING ANGLE .....	12
OPERATING THE MONITOR.....	13
NAVIGATION BUTTON .....	13
MENU CONTENTS .....	15
STANDBY FEATURE .....	24
TROUBLE SHOOTING .....	25
RECYCLING INFORMATION.....	26
APPENDIX .....	27
SPECIFICATIONS : ProLite XCB4594DQSU-B1 .....	27
DIMENSIONS.....	28
COMPLIANT TIMING .....	28

# FOR YOUR SAFETY

## SAFETY PRECAUTIONS

### WARNING

#### **STOP OPERATING THE MONITOR WHEN YOU SENSE TROUBLE**

If you notice any abnormal phenomena such as smoke, strange sounds or fumes, unplug the monitor and contact your dealer or iiyama service center immediately. Further use may be dangerous and can cause fire or electric shock.

#### **NEVER REMOVE THE CABINET**

High voltage circuits are inside the monitor. Removing the cabinet may expose you to the danger of fire or electric shock.

#### **DO NOT PUT ANY OBJECT INTO THE MONITOR**

Do not put any solid objects or liquids such as water into the monitor. In case of an accident, unplug your monitor immediately and contact your dealer or iiyama service center. Using the monitor with any object inside may cause fire, electric shock or damage.

#### **INSTALL THE MONITOR ON A FLAT, STABLE SURFACE**

The monitor may cause an injury if it falls or is dropped.

#### **DO NOT USE THE MONITOR NEAR WATER**

Do not use where water may be splashed or spilt onto the monitor as it may cause fire or electric shock.

#### **OPERATE UNDER THE SPECIFIED POWER SUPPLY**

Be sure to operate the monitor only with the specified power supply. Use of an incorrect voltage will cause malfunction and may cause fire or electric shock.

#### **PROTECT THE CABLES**

Do not pull or bend the power cable and signal cable. Do not place the monitor or any other heavy objects on the cables. If damaged, the cables may cause fire or electric shock.

#### **ADVERSE WEATHER CONDITIONS**

It is advisable not to operate the monitor during a heavy thunder storm as the continual breaks in power may cause malfunction. It is also advised not to touch the plug in these circumstances as it may cause electric shock.

### CAUTION

#### **INSTALLATION LOCATION**

Do not install the monitor where sudden temperature changes may occur, or in humid, dusty or smoky areas as it may cause fire, electric shock or damage. You should also avoid areas where the sun shines directly on the monitor.

#### **DO NOT PLACE THE MONITOR IN A HAZARDOUS POSITION**

The monitor may topple and cause injury if not suitably located. Please also ensure that you do not place any heavy objects on the monitor, and that all cables are routed such that children may not pull the cables and possibly cause injury.

## CAUTION

### MAINTAIN GOOD VENTILATION

Ventilation slots are provided to keep the monitor from overheating. Covering the slots may cause fire. To allow adequate air circulation, place the monitor at least 10cm (or 4 inches) from any walls. When removing the tilt stand, the ventilation slots on the back side of the monitor can be blocked. This may overheat the monitor and may cause fire or damage. Make sure to allow enough ventilation when removing the tilt stand. Operating the monitor on its back, side, upside down or on a carpet or any other soft material may also cause damage.

### DISCONNECT THE CABLES WHEN YOU MOVE THE MONITOR

When you move the monitor, turn off the power switch, unplug the monitor and be sure the signal cable is disconnected. If you do not disconnect them, it may cause fire or electric shock.

### UNPLUG THE MONITOR

If the monitor is not in use for a long period of time it is recommended that it is left unplugged to avoid accidents.

### HOLD THE PLUG WHEN DISCONNECTING

To disconnect the power cable or signal cable, always pull it by the plug. Never pull on the cable itself as this may cause fire or electric shock.

### DO NOT TOUCH THE PLUG WITH WET HANDS

Pulling or inserting the plug with wet hands may cause electric shock.

### WHEN YOU INSTALL THE MONITOR ON YOUR COMPUTER

Be sure the computer is strong enough to hold the weight of the monitor, otherwise, you may damage your computer.

### CAREFUL! PROTECT YOUR HANDS AND FINGERS

- Careful attention is required not to pinch your fingers or hands into the moving part of the stand when you change the angle.
- When adjusting the height, do not lower the monitor vigorously while keeping your hand between the lower part of the monitor and the base.

### REMARK FOR 24/7 USAGE

This product is not specifically designed for 24/7 usage in all environments.

### REMARK SPECIFIC TO DESKTOP USE

This product is designed for desktop use, not for digital signage (electronic signboard) applications such as ceiling hanging or wall mounting.

### DO NOT TILT THE MONITOR DOWNWARD TOO FAR

To avoid potential screen damage such as LCD panel peeling from the bezel, ensure that the monitor does not tilt downward beyond its adjustable range.

### DO NOT USE ALCOHOL OR DISINFECTANTS ON THE MONITOR

Do not spray alcohol or disinfectants directly onto the monitor or use them near the monitor. Also, do not wipe the monitor with a cloth or sheet that contains alcohol or disinfectants. These may cause discoloration, deterioration, or cracking of the cabinet, damage to the surface treatment of the LCD panel, and deterioration of components.

## OTHERS

### ERGONOMIC RECOMMENDATIONS

To eliminate eye fatigue, do not operate the monitor against a bright background or in a dark room. For optimal viewing comfort, the monitor should be just below eye level and 40-60cm (16-24 inches) away from your eyes. When using the monitor over a prolonged time, a ten minute break every hour is recommended as looking at the screen continuously can cause eye strain.

## SPECIAL NOTES ON LCD MONITORS

The following symptoms are normal with LCD monitors and do not indicate a problem.

### NOTE

- When you first turn on the LCD monitor, the picture may not fit in the display area because of the type of computer that is used. In this case, adjust the picture position to the correct position.
- You may find slightly uneven brightness on the screen depending on the desktop pattern you use.
- Due to the nature of the LCD screen, an afterimage of the previous screen may remain after switching the image, when the same image is displayed for hours. In this case, the screen can be recovered slowly by changing the image or turning off the Power Switch for some hours.

## CUSTOMER SERVICE

### NOTE

If you have to return your unit for service and the original packaging has been discarded, please contact your dealer or iiyama service center for advice or replacement packaging.

# CLEANING

## WARNING

- If you drop any materials or liquids such as water into the monitor when cleaning, unplug the power cable immediately and contact your dealer or iiyama service center.
- For safety reasons, turn off the power switch and unplug the monitor before you clean it.

## CAUTION

- Do not spray alcohol or disinfectants directly onto the monitor or use them near the monitor. Also, do not wipe the monitor with a cloth or sheet that contains alcohol or disinfectants. These may cause discoloration, deterioration, or cracking of the cabinet, damage to the surface treatment of the LCD panel, and deterioration of components.
- To avoid potential damage on the monitor (LCD panel / cabinet / connector terminals) or accessories, never use the following strong solvents or cleaning sheets. These may cause discoloration, deterioration, or cracking of the cabinet, damage to the surface treatment of the LCD panel, and deterioration of components.

Benzine	Hypochlorous acid water
Thinner	Acidic or alkaline solvents
Alcohol	Wax
Bleach	Abrasives
Peroxide	Office equipment cleaner
Acetone	Glass cleaner
Methylene chloride	Tissue paper
Toluene	Wet tissue
Ammonia	Chemical cloth
Sodium hypochlorite solution (Chlorine bleach)	Cleaning paper
	etc.

## NOTE

- To protect the LCD panel, do not scratch or rub the screen with a hard object.
- Do not leave the LCD panel wet. If water droplets or the like get on it, immediately wipe it off with a dry, soft cloth. Leaving it on may cause discoloration or stains on the LCD panel. In addition, if moisture gets inside the monitor, it may cause damage.
- Touching the cabinet with any product made from rubber or plastic for a long time may cause degeneration or loss of paint on the cabinet.

## Regular care

Gently wipe the cabinet with a soft, dry and clean cloth. If your monitor is particularly dirty, soak the cloth in a mild detergent thoroughly diluted with water, wring it out tightly, and then wipe the dirt off. Then immediately wipe it with a soft, dry cloth.

## Alcohol disinfection

Alcohol disinfection may cause discoloration, deterioration, or cracking of the cabinet, damage to the surface treatment of the LCD panel, and deterioration of components. Instead, we recommend disinfecting your hands away from the monitor before and after use.

If you absolutely must disinfect the monitor with alcohol, please understand above warnings and cautions in advance. Also, avoid frequent alcohol disinfection.



# BEFORE YOU OPERATE THE MONITOR

## FEATURES

- ◆ Supports Resolutions up to 5120 × 1440
- ◆ High Contrast 3000:1 (Typical), Advanced Contrast Function Available, Brightness 450cd/m<sup>2</sup> (Typical), Quick Response Time 2ms (Gray to Gray)
- ◆ Flicker - Free
- ◆ Blue Light Reducer
- ◆ Digital Character Smoothing
- ◆ 2 × 3W Stereo Speakers
- ◆ Standby Feature
- ◆ VESA Mounting Standard (100×100 / 200×100mm) Compliant
- ◆ Keyhole for Security Lock

## CHECKING THE CONTENTS OF THE PACKAGE

The following accessories are included in your package. Check to see if they are enclosed with the monitor. If anything is missing or damaged, please contact your local iiyama dealer or regional iiyama office.

- |                 |                     |                           |
|-----------------|---------------------|---------------------------|
| ■ Power Cable * | ■ HDMI Cable        | ■ DisplayPort Cable       |
| ■ USB Cable     | ■ Stand-Neck        | ■ Stand-Base with a screw |
| ■ Safety Guide  | ■ Quick Start Guide |                           |

### CAUTION

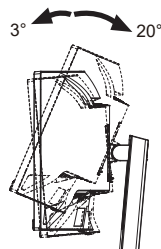
\* All guarantees and warranties are void for any problems or damage caused by a power cable not supplied by iiyama.

An approved power cable greater or equal to H05VVF, 3G, 0.75mm<sup>2</sup> must be used.

## USING ARM OR STAND

### CAUTION

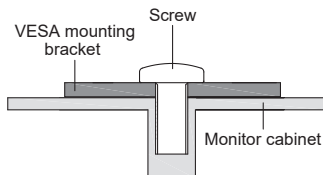
- This product is designed for desktop use, not for digital signage (electronic signboard) applications such as ceiling hanging or wall mounting.
- Before installation, make sure the display arm or desk arm stand is strong enough to hold the necessary weight of the monitor and the mount.
- The monitor angle should be within 20° upward and 3° downward. This product cannot be used facing upward or downward beyond this range.
- If the monitor is used (installed) at an angle more than 3° downward, the LCD may peel off from the bezel and fall, resulting in damage. In addition, such cases will not be covered by support or warranty.
- Regularly check the tightness of the screws. If the screws are not tight enough, the monitor may come off and cause injury or damage.



## [ DISPLAY ARM OR DESK ARM STAND ]

### CAUTION

When using a display arm or desk arm stand, consider the thickness of the VESA mounting bracket and use four M4×12mm screws to secure it to the monitor. Ensure all screws are tightened and secured properly. Using screws longer than this may cause electric shock or damage by contacting the electrical parts inside the monitor. For this product, the thickness of the VESA mounting bracket is assumed to be approx. 2.5mm.

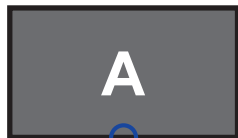


## [ LANDSCAPE MODE ]

This monitor can only be used in landscape. Do not rotate or operate the monitor in any other orientation than landscape.

### Available

Landscape



Navigation Button /  
Power Indicator

### Not Available



Portrait



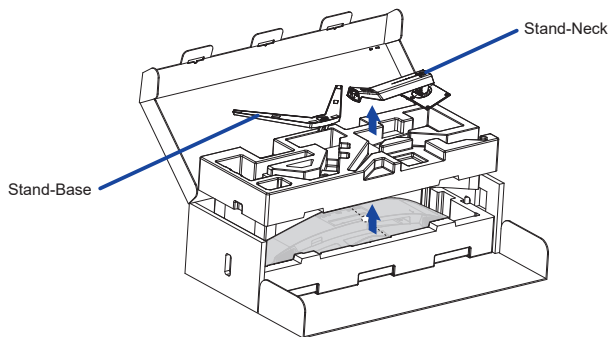
## FITTING AND REMOVAL OF STAND

### CAUTION

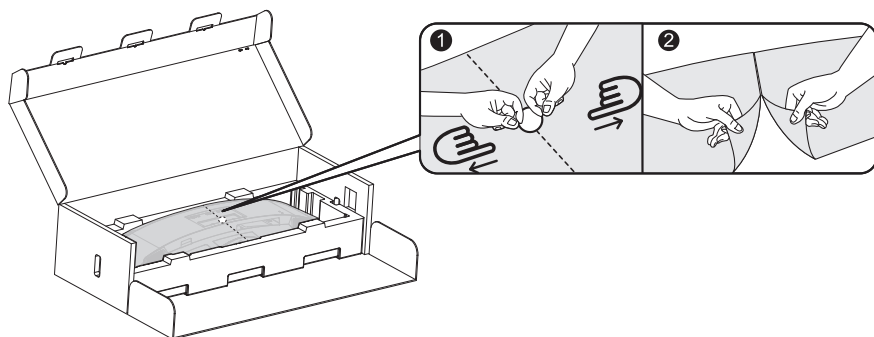
- Put the monitor on a stable surface. The monitor may cause injury or damage if it falls or is dropped.
- Do not give a strong impact to the monitor. It may cause damage.
- Unplug the monitor before removal or installation to avoid an electric shock or a damage.

### <Installation>

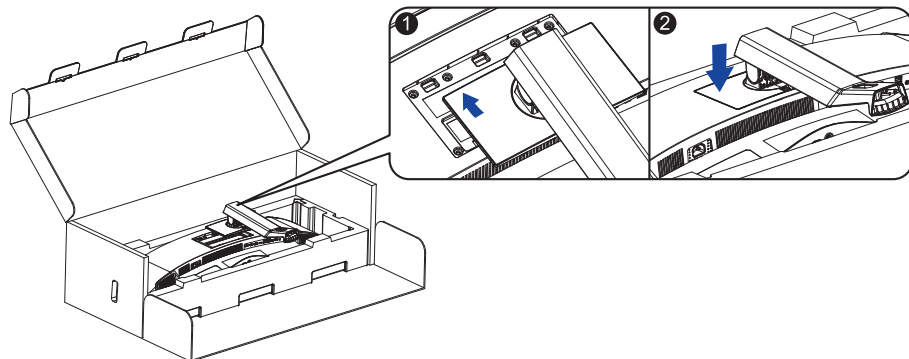
- ① Place the carton box on a flat surface as shown below. Take out the Stand-Neck and Stand-Base from the upper protecting cushion inside the carton box.



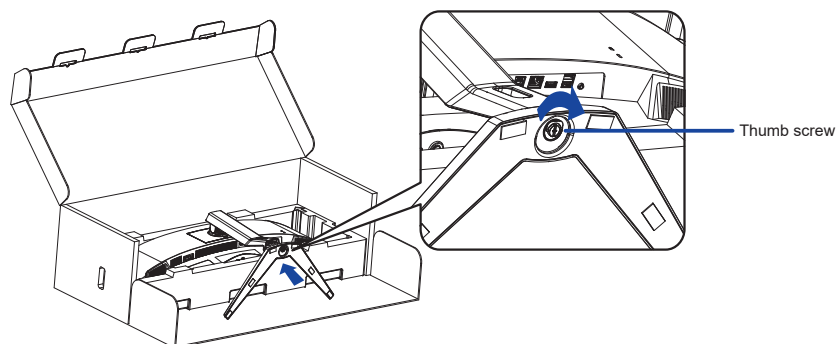
- ② Open the bag containing the monitor.



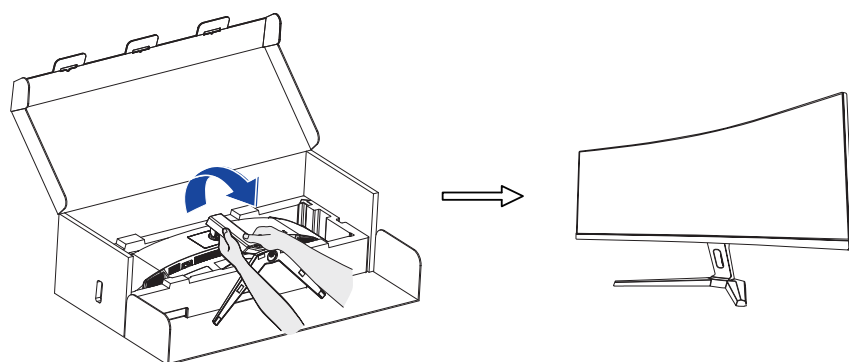
- ③ Install the Stand-Neck to the monitor in the lower protecting cushion.



- ④ Install the Stand-Base to the Stand-Neck and then tighten the thumb screw to secure it.

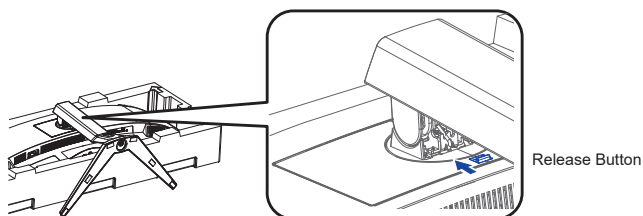


- ⑤ Carefully take out the assembled monitor from the protecting cushion and stand it up.

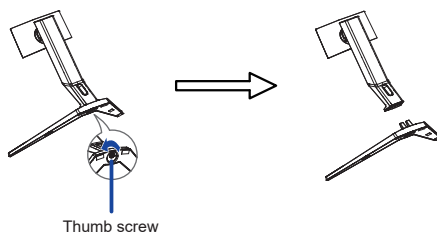


# <Removal>

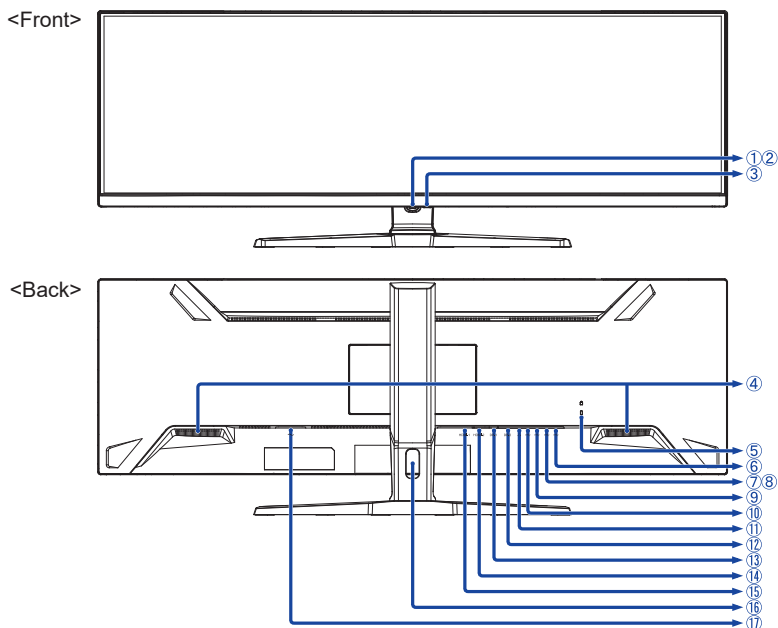
- ① Put the monitor protecting cushion on a flat surface and place the monitor face down in it.
- ② Press the release button in the direction of the arrow as shown below to remove the stand.



- ③ Loosen the thumb screw to disassemble the stand.



# CONTROLS AND CONNECTORS



① Navigation Button \* See NAVIGATION BUTTON on page 13.

② Power Indicator

**NOTE** Blue: Normal operation  
Orange: Standby mode

③ Power Button (⏻)

④ Speakers

⑤ Keyhole for Security Lock (🔒)

**NOTE** You can fasten a security lock and cable to prevent the monitor from being removed without your permission.

⑥ USB Type-C Downstream Connector (⚡) [USB3.2 Gen 1: 5Gbps, 5V, 1.5A]

⑦ USB Type-A Downstream Connector (⚡) [USB3.2 Gen 1: 5Gbps, 5V, 900mA]

⑧ USB Type-A Downstream Connector (⚡) [USB3.2 Gen 1: 5Gbps, 5V, 900mA]

⑨ USB Type-B Upstream Connector (⚡)

⑩ USB Type-C Downstream Connector (⚡) [USB3.2 Gen 1: 5Gbps, 5V, 1.5A]

⑪ Headphone Connector (🎧)

**NOTE** Proper operation of connected external devices other than headphones is not guaranteed.

⑫ DisplayPort Connector (DP-2)

⑬ DisplayPort Connector (DP-1)

⑭ HDMI Connector (HDMI-2)

⑮ HDMI Connector (HDMI-1)

⑯ Cable Hole

⑰ AC Connector ( ~ ) [Alternating current]

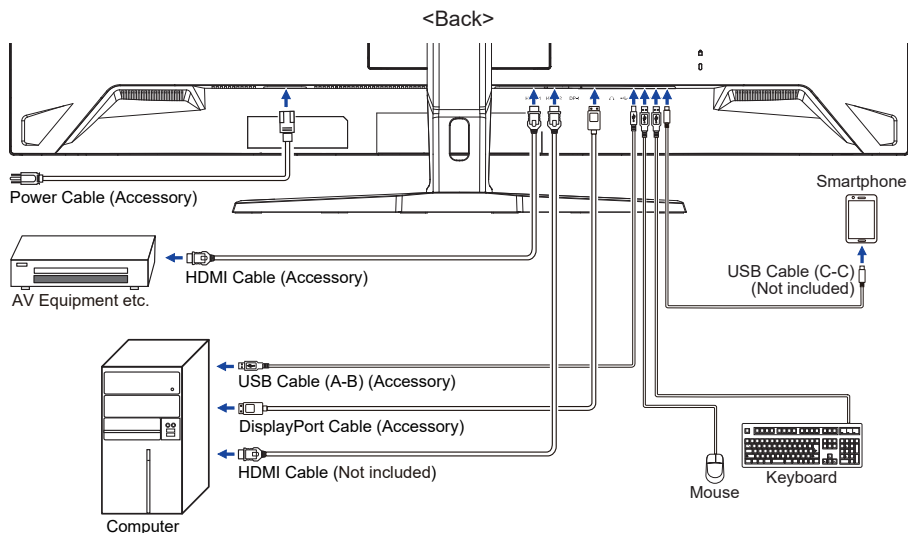
## CONNECTING YOUR MONITOR

- ① Ensure that both the computer and the monitor are switched off.
- ② Connect the computer to the monitor with the signal cable.
- ③ Connect the computer to the monitor with the USB Cable.
- ④ Connect the Power Cable to the monitor first and then to the power source.
- ⑤ Turn on your monitor and computer.

### NOTE

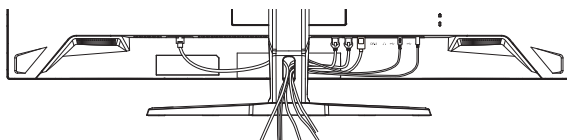
- Make sure that the building installation has a circuit breaker of 120/240V, 20A (maximum).
- The signal cables used for connecting the computer and monitor may vary with the type of computer used. An incorrect connection may cause serious damage to both the monitor and the computer. The cable supplied with the monitor is for a standard connector. If a special cable is required please contact your local iiyama dealer or regional iiyama office.
- The Class I pluggable equipment Type A must be connected to protective earth.
- The socket-outlet shall be installed near the equipment and shall be easily accessible.
- Excessive sound pressure from ear-/headphones can cause hearing damage/hearing loss.

### [ Example of Connection ]



### [ Collect Cables ]

Put the cables through the Cable Hole to bundle them.



## COMPUTER SETTING

### ■ Signal Timing

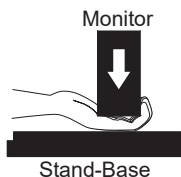
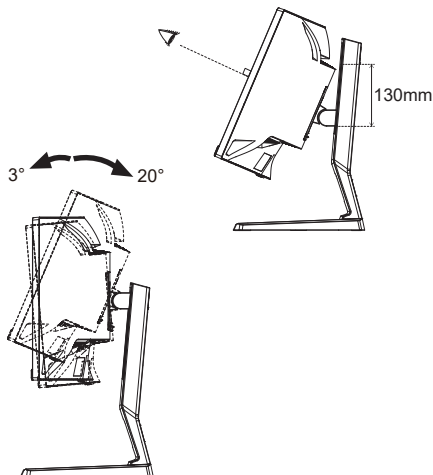
Change to the desired signal timing listed on page 28: COMPLIANT TIMING.

## ADJUSTING THE HEIGHT AND THE VIEWING ANGLE

- For optimal viewing it is recommended to position yourself directly opposite to the full face of the monitor, then adjust the monitor's height and angle to your own preference.
- Hold the panel so that the monitor does not topple when you change the monitor's height or angle.
- You are able to adjust the monitor's height up to 130mm, the angle up to 20° upward and 3° downward.

### NOTE

- Do not touch the LCD screen when you change the height or the angle. It may cause damage or break the LCD screen.
- Careful attention is required not to pinch your fingers or hands into the moving part of the stand when you change the angle.
- When adjusting the height, do not lower the monitor vigorously while keeping your hand between the lower part of the monitor and the base.

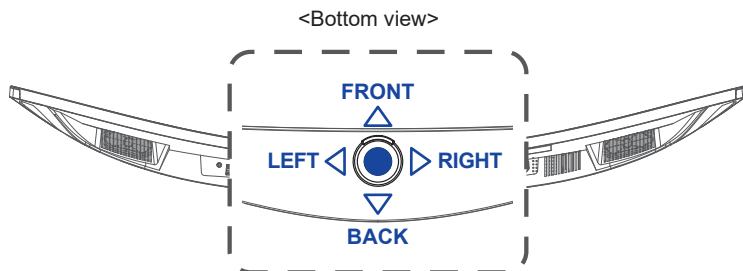




# OPERATING THE MONITOR

## NAVIGATION BUTTON

Press the following 5 places on the Navigation Button to move in each direction or make direct adjustments on the on-screen menu.



Direction	Function	
● (CENTER)	Main menu / Execution	
FRONT	Move down	<b>Shortcut</b> Submenu
BACK	Move up	<b>Direct</b> Input Select
RIGHT	Move right	<b>Direct</b> Volume
LEFT	Move left	<b>Direct</b> Volume

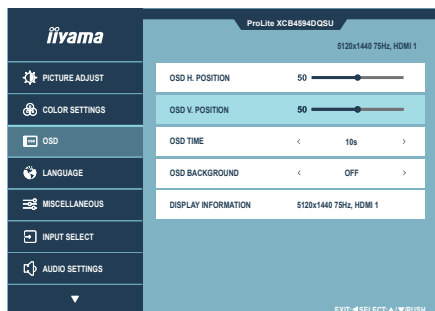
To create the best picture, your iiyama LCD monitor has been preset at the factory with the COMPLIANT TIMING shown on page 28. You are also able to adjust the picture by following the operation shown below.

- ① Press the Navigation Button **CENTER** to start the On-Screen Display (OSD) feature. The main menu icons are displayed and you can switch between them by pressing the Navigation Button **LEFT** / **RIGHT**.



- ② Select the main menu icon related to your desired adjustment or setting. Press **CENTER**. Then, press the Navigation Button **FRONT** / **BACK** to highlight the desired sub-menu.
- ③ Press **CENTER** again. Press **LEFT** / **RIGHT** to make the appropriate adjustment or setting.
- ④ Press **CENTER** and then press **LEFT** (or **FRONT** / **BACK**) to leave the menu, so that the settings you just made would be automatically saved.


For example, to correct for OSD vertical position, select **OSD** in the main menu and press **CENTER**. Then, select "OSD V. Position" by pressing **FRONT** / **BACK** and press **CENTER**. Press **LEFT** / **RIGHT** to change the OSD vertical position settings. The OSD vertical position should be changing accordingly while you are doing this.

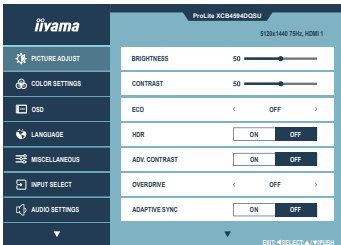










Press **CENTER** and then press **LEFT** lastly to close the On-Screen Display feature. All changes are saved in the memory.

#### NOTE

- When button operations are aborted during adjustment, On-Screen Display disappears when the time set for the "OSD Time" has passed. Also, the Navigation Button can be used to return previous menu and turn off the On-Screen Display.
- Any changes are automatically saved in the memory when the On-Screen Display disappears. Turning off the power should be avoided while using the Menu.


**Picture Adjust** \*<sup>1</sup>



Sub-menu	Problem / Option		Navigation Button
Brightness * <sup>2</sup> <b>Shortcut</b>	Too dark Too bright		 
Contrast	Too dull Too intense		 
ECO <b>Shortcut</b>	Off	Normal	 
	1	Brightness of back-light is reduced.	
	2	Brightness of back-light is reduced more than 1.	
	3	Brightness of back-light is reduced more than 2.	
HDR	On	For HDR (High Dynamic Range) signal	
	Off	For normal signal	
Adv. Contrast	On	Increased contrast ratio	
	Off	Typical Contrast Ratio	
Overdrive <b>Shortcut</b>	Off / 1 / 2 / 3 / 4 / 5 Improve the gray level response time of the LCD panel. A higher level results in a faster response time.		
Adaptive Sync * <sup>3</sup>	On	Enable Adaptive Sync function.	
	Off	Disable Adaptive Sync function.	
X-Res Technology	Off	Normal	
	Soft	Enhance the picture edge.	
	Middle	Enhance the picture edge more than the Soft option.	
	Hard	Enhance the picture edge more than the Middle option.	
Black Tuner	From -5 to +5 You can adjust dark shades.		 

\*<sup>1</sup> Selected adjustments and settings may not be possible due to other items that are enabled. See page 16 **Functional Interaction Matrix** for more details.

\*<sup>2</sup> Adjust the brightness when you are using the monitor in a dark room and feel the screen is too bright.

\*<sup>3</sup> Available for DisplayPort input only.

# Shortcut

You can shortcut to the specific menu by the following operations.  
Press the Navigation Button **FRONT** with no menu displayed and select the desired menu.



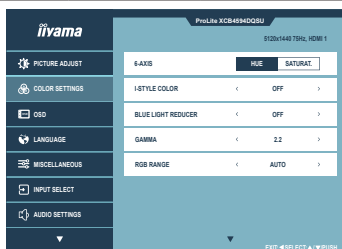
## Functional Interaction Matrix









Selected menu / Active menu		Picture Adjust					
		Brightness	Contrast	ECO	Adv. Contrast	Overdrive	Black Tuner
Picture Adjust	ECO	—	✓	/	—	✓	✓
	HDR	✓	✓		—	✓	—
	Adv. Contrast	—	✓	—	/	✓	✓
	Adaptive Sync	✓	✓	✓		✓	✓
	X-Res Technology	✓	✓	✓		✓	✓
Color Settings	i-Style Color	—	—	—	—	—	—
	Blue Light Reducer	—	✓	—	—	✓	✓






✓ : Available  
— : Not available



## Color Settings



Sub-menu	Problem / Option		Navigation Button	
6-Axis	Hue	Red	Too weak Too strong	   
		Yellow		
		Green		
		Cyan		
		Blue		
		Magenta		
	Saturat.	Red	Too weak Too strong	   
		Yellow		
		Green		
		Cyan		
		Blue		
		Magenta		
i-Style Color <sup>*1</sup> <div>Shortcut</div>	Off	Return to a state set by color adjustment except i-Style Color.		
	Standard	For general windows environment and monitor default setting		
	Game	For PC game environment		
	Cinema	For movie and video environment		
	Scenery	For displaying outdoor scenery images		
	Text	For text editing and viewing in a word processing environment		
Blue Light Reducer <sup>*2</sup>	Off	Normal		
	1	Blue light is reduced.		
	2	Blue light is reduced more than 1.		
	3	Blue light is reduced more than 2.		
Gamma <sup>*3</sup>	1.8	High contrast		
	2.2	Normal		
	2.6	Dark		
RGB Range <sup>*3</sup>	Auto	Automatically select color scale signal.		
	Full	For full-range color scale signal		
	Limited	For limited color scale signal		


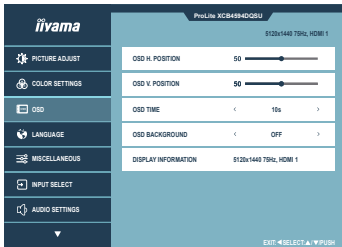














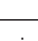

<div> Color Settings</div>				
Sub-menu		Problem / Option		Navigation Button
Color Temperature *4	9300K	Cool color		
	6500K	Normal color		
	5000K	Warm color		
	sRGB	sRGB-based color		
User Preset *4	Red	Too weak Too strong	<div></div> <div></div>	
	Green			
	Blue			

- \*1 Disabled when HDR or Blue Light Reducer is activated.
- \*2 Disabled when ECO, HDR, Adv. Contrast or i-Style Color is activated.
- \*3 Disabled when HDR is activated.
- \*4 Disabled when HDR, i-Style Color or Blue Light Reducer is activated.

### Shortcut

You can shortcut to the specific menu by the following operations.  
 Press the Navigation Button **FRONT** with no menu displayed and select the desired menu.



 <b>OSD</b>				
Sub-menu	Problem / Option		Navigation Button	
OSD H. Position	OSD is too left OSD is too right		 	 
OSD V. Position	OSD is too low OSD is too high		 	 
OSD Time	You can set the OSD display duration time. 5 / 10 / 30 / 60 seconds			  
OSD Background	The background of OSD is made transparent. Off / 1 / 2 / 3 / 4			  
Display Information	Display the information regarding the current input signal coming from the graphic card in your computer.			
	<b>NOTE</b> See your graphics card user guide for more information about changing the resolution and refresh.			

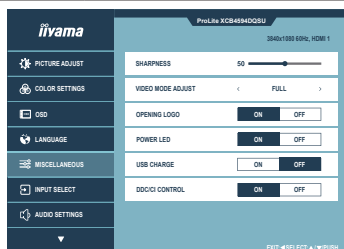
## Language

### Option

English	English	Nederlands	Dutch
Français	French	Český	Czech
Deutsch	German	Русский	Russian
Italiano	Italian	Українська	Ukrainian
Polski	Polish	日本語	Japanese
Español	Spanish		



## Miscellaneous




Sub-menu	Option		Navigation Button
Sharpness *1,2	You can change the picture quality from 0 to 100 (soft to sharp). Press  to change the picture quality in numerical order. Press  to change the picture quality in reverse numerical order.		
Video Mode Adjust *1,3	Full	Full screen display	
	Aspect	Expansion display of Aspect	
	Dot by Dot	Display the picture dot by dot.	
Opening Logo	On	iiyama Logo is displayed when the monitor is turned on.	
	Off	iiyama Logo is not displayed when the monitor is turned on.	
Power LED	On	The Power Indicator is turned On.	
	Off	The Power Indicator is turned Off.	
<b>NOTE</b> Turn Off the Power Indicator when you are bothered by the light.			
USB Charge	On	USB devices can be charged even when the monitor is in the standby mode.	
	Off	USB devices can not be charged when the monitor is in the standby mode.	
<b>NOTE</b> When the monitor is turned off, USB devices cannot be charged even if the USB Charge function is On.			
DDC/CI Control	On	Enable DDC/CI Control function.	
	Off	Disable DDC/CI Control function.	

\*1 Effective only when the resolution is less than 5120 × 1440.

\*2 Disabled when X-Res Technology is activated.

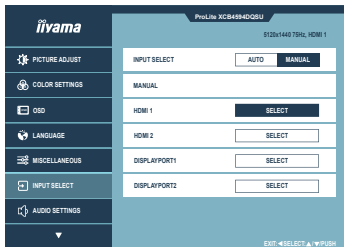
\*3 Disabled when Adaptive Sync is activated.





Input Select

Direct



Sub-menu		Option	
Input Select	Auto	Search for an available input source and select automatically.	
	Manual	HDMI 1	Select the HDMI 1 input.
		HDMI 2	Select the HDMI 2 input.
		DisplayPort1	Select the DisplayPort 1 input.
		DisplayPort2	Select the DisplayPort 2 input.

NOTE

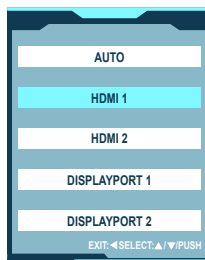
Auto option enables automatic selection of the input sources available.







The input source from the computer in standby mode can not be selected.

If you manually select one of the input sources, the other source is not automatically selected.

Direct

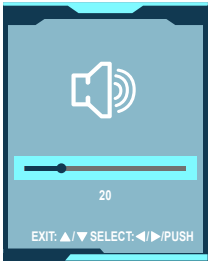
- Input Select: Pressing the Navigation Button **BACK** with no menu displayed will directly show the Input Select screen.



<div> <b>Audio Settings</b></div> <div></div>			
Sub-menu	Problem / Option		Navigation Button
Volume	Too soft Too loud		 
Mute	On	Turn off the sound temporarily.	 
	Off	Return the sound volume to the previous level.	

### Direct

- Volume: Pressing the Navigation Button **LEFT◀ / ▶RIGHT** with no menu displayed will directly show the Volume adjustment screen.



<div>  <b>Recall</b> </div> <div>  </div>		
Sub-menu	Option	
Recall All?	Yes	Factory-preset data is restored.

## ■ Lock Mode

### <OSD Menu>

1. The OSD lock will be activated by pressing the Navigation Button **RIGHT▶** for 5 seconds. If you try to access the OSD by pressing the Navigation Button, message "OSD LOCKED" will appear on the screen.
2. The OSD lock will be deactivated by pressing the Navigation Button **RIGHT▶** again for 5 seconds.

### <Power Button>

1. The Power Button lock will be activated by pressing the Navigation Button **LEFT◀** for 5 seconds. Locking the Power Button means that won't be able to turn off the Monitor while the Power Button is locked. If you press the Power Button, message "POWER BUTTON LOCKED" will appear on the screen.
2. The Power Button lock will be deactivated by pressing the Navigation Button **LEFT◀** again for 5 seconds.

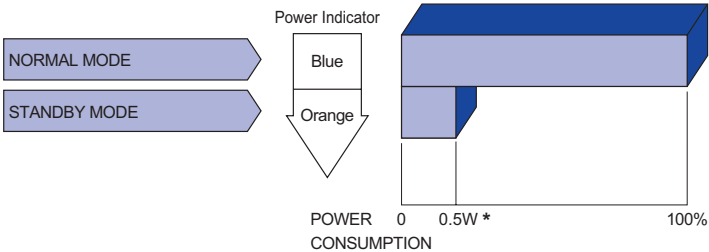
# STANDBY FEATURE

This product features the standby function. When activated, it automatically reduces unnecessary power consumption of the monitor when your computer is not in use.

There is a standby step the monitor takes as described below. The standby function, including any timer settings is configured by the operating system. Check your operating system manual for information on how this can be configured.

## Standby Mode

When the video signal from the computer is off, the monitor enters into Standby Mode which reduces the power consumption to 0.5W or less\*. The screen becomes dark, and the power indicator turns to orange. From Standby Mode, the image reappears in several seconds when either the keyboard or the mouse are touched again.



\* When the USB devices are not connected.

# TROUBLE SHOOTING

If the monitor fails to operate correctly, please follow the steps below for a possible solution.

1. Perform the adjustments described in OPERATING THE MONITOR, depending on the problem you have. If the monitor does not get a picture, skip to 2.
2. Consult the following items if you cannot find an appropriate adjustment item in OPERATING THE MONITOR or if the problem persists.
3. If you are experiencing a problem which is not described below or you cannot correct the problem, discontinue using the monitor and contact your dealer or iiyama service center for further assistance.

Problem		Check
①	The picture does not appear.	
	(Power indicator does not light up.)	<input type="checkbox"/> The Power Cable is firmly seated in the socket. <input type="checkbox"/> The Power Button is turned ON. <input type="checkbox"/> The AC socket is live. Please check with another piece of equipment.
	(Power indicator is blue.)	<input type="checkbox"/> If the blank screen saver is in active mode, touch the keyboard or the mouse. <input type="checkbox"/> Increase the Contrast and/or Brightness. <input type="checkbox"/> The computer is ON. <input type="checkbox"/> The Signal Cable is properly connected. <input type="checkbox"/> The signal timing of the computer is within the specification of the monitor.
	(Power indicator is orange.)	<input type="checkbox"/> If the monitor is in standby mode, touch the keyboard or the mouse. <input type="checkbox"/> The computer is ON. <input type="checkbox"/> The Signal Cable is properly connected. <input type="checkbox"/> The signal timing of the computer is within the specification of the monitor.
②	The screen is not synchronized.	<input type="checkbox"/> The Signal Cable is properly connected. <input type="checkbox"/> The signal timing of the computer is within the specification of the monitor.
③	The screen position is not in the center.	<input type="checkbox"/> The signal timing of the computer is within the specification of the monitor.
④	The screen is too bright or too dark.	<input type="checkbox"/> The video output level of the computer is within the specification of the monitor.
⑤	The screen is shaking.	<input type="checkbox"/> The power voltage is within the specification of the monitor. <input type="checkbox"/> The signal timing of the computer is within the specification of the monitor.
⑥	No sound.	<input type="checkbox"/> The audio equipment (computer etc.) is ON. <input type="checkbox"/> The Volume is turned up. <input type="checkbox"/> The Mute is OFF. <input type="checkbox"/> The audio output level of the audio equipment is within the specification of the monitor.
⑦	The sound is too loud or too quiet.	<input type="checkbox"/> The audio output level of the audio equipment is within the specification of the monitor.

## RECYCLING INFORMATION

For better environment protection please don't dispose your monitor.  
Please visit our web site: <https://iiyama.com> for monitor recycling.

## APPENDIX

Design and specifications are subject to change without prior notice.

### SPECIFICATIONS : ProLite XCB4594DQSU-B1

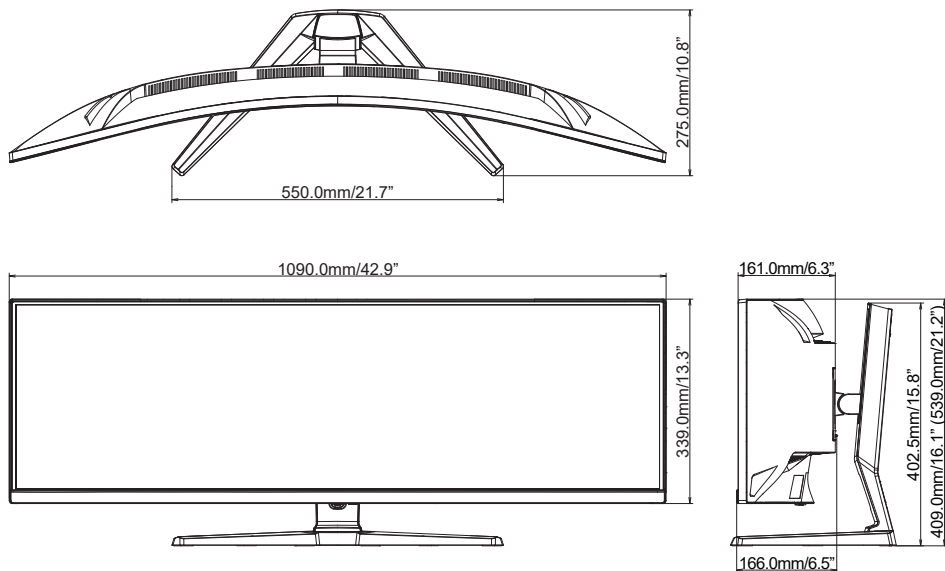
Size Category		45"
LCD Panel	Panel technology	VA
	Size	Diagonal: 44.5" (113cm)
	Curvature	1500R
	Pixel pitch	0.212mm H × 0.212mm V
	Brightness	450cd/m <sup>2</sup> (Typical), 185cd/m <sup>2</sup> (Default / Energy Saving)
	Contrast ratio	3000 : 1 (Typical), Advanced Contrast Function Available
	Viewable angle	Right / Left: 89° each, Up / Down: 89° each (Typical)
	Response time <sup>*1</sup>	2ms (Gray to Gray)
Display Colors		Approx. 16.7 Million
Sync Frequency		HDMI: Horizontal: 30.0-135.0kHz, Vertical: 48-75Hz DisplayPort: Horizontal: 30.0-115.0kHz, Vertical: 48-75Hz
Native Resolution		5120 × 1440, 7.4 MegaPixels
Supported max. resolution		HDMI: 5120 × 1440 75Hz 3840 × 2160 60Hz DisplayPort: 5120 × 1440 75Hz
Input Connector		HDMI × 2, DisplayPort × 2
Input Video Signal		HDMI, DisplayPort
USB Standard		USB3.2 Gen 1 (5Gbps)
Number of USB Ports		1 Upstream: Type-B
Connector shape		4 Downstream: Type-A (DC5V, 900mA) × 2, Type-C (DC5V, 1.5A) × 2
Headphone Connector <sup>*2</sup>		ø 3.5mm mini jack (Stereo)
Speakers		3W × 2 (Stereo speakers)
Maximum Screen Size		1087.5mm W × 305.9mm H / 42.8" W × 12.0" H
Power Source		100-240VAC, 50/60Hz, 1.3A
Power Consumption <sup>*3</sup>		37W (Typical) Standby mode: 0.5W maximum, Off mode: 0.3W maximum
Dimensions		1090.0 × 409.0 - 539.0 × 275.0mm / 42.9 × 16.1 - 21.2 × 10.8" (W×H×D)
Net Weight		10.5kg / 23.1lbs
Height Adjustment Range		130mm
Tilt Angle		Upward: 20°, Downward: 3°
Environmental Considerations		Operating: Temperature 5 to 35°C / 41 to 95°F Humidity 10 to 80% (No condensation) Storage: Temperature -20 to 60°C / -4 to 140°F Humidity 10 to 90% (No condensation)
Approvals		CE, UKCA, TÜV-Bauart, EAC, VCCI, PSE

**NOTE** <sup>\*1</sup> When "Overdrive" is set to 5.

<sup>\*2</sup> Proper operation of connected external devices other than headphones is not guaranteed.

<sup>\*3</sup> When the USB devices are not connected.

## DIMENSIONS



( ) : Maximum adjustment range

## COMPLIANT TIMING

Video Mode	Horizontal Frequency	Vertical Frequency	Dot Clock
800 × 600	37.879kHz	60.317Hz	40.000MHz
	46.875kHz	75.000Hz	49.500MHz
1024 × 768	48.363kHz	60.004Hz	65.000MHz
	60.023kHz	75.029Hz	78.750MHz
1280 × 1024	63.981kHz	60.020Hz	108.000MHz
	79.976kHz	75.025Hz	135.000MHz
1920 × 1080	67.500kHz	60.000Hz	148.500MHz
	83.844kHz	74.973Hz	174.500MHz
2560 × 1440	88.787kHz	59.951Hz	241.500MHz
	111.857kHz	74.971Hz	304.250MHz
3840 × 1080	66.625kHz	59.969Hz	266.500MHz
3840 × 2160	135.000kHz	60.000Hz	594.000MHz
5120 × 1440	88.824kHz	59.976Hz	468.990MHz
	111.074kHz	74.999Hz	586.470MHz

\* Available for HDMI input only.

The screen is displayed in a compressed state, causing text and lines to appear partially thinner, making it unsuitable for business use.