



The product images are for illustration purposes only. Actual product appearance, ports, keyboard layout, and accessories may vary by model.

- Intel Core Ultra 5 226V, 8C (4P + 4LPE) / 8T, Max Turbo up to 4.5GHz, 8MB Intel Smart Cache
- 16GB Soldered LPDDR5X-8533, MoP Memory
- 512GB SSD M.2 2242 PCIe 4.0x4 NVMe Opal 2.0
- Integrated Intel Arc Graphics 130V
- Windows 11 Pro, English (US) / English (UK)
- Case color - Black
- 1-year, Courier or Carry-in

Premier Support - A direct 24x7x365 line to our most elite technicians.

- Advanced technical support, 24x7x365, in more than 100 markets
- Comprehensive hardware & OEM software support
- Single point of contact for simplified end-to-end case management
- Technical Account Managers for proactive relationship and escalation management
- Priority on service delivery and repair parts
- Lenovo Service Connect Portal for customized reporting and product support

Accidental Damage Protection - Protection of your PC from the unexpected.

Experience shows that a significant portion of devices may be damaged (and not covered under warranty) in the first three years. Lenovo's Accidental Damage Protection service covers accidents beyond the system warranty such as drops, spills, bumps and even electrical surges. Make sure your new device has maximum protection, avoid unplanned costs and get peace of mind.

Base Warranty - Included with the systems you purchase, default 1- or 3-year coverage window.

Warranty Extensions & Upgrades - Service and protection that's right for your circumstances.

- Pick Up & Return Courier
- Onsite Support
- Technician Installed Customer
- Replaceable Unit Service
- International Warranty Upgrade

Recommended Accessories United Kingdom



ThinkPad Dual-Mode Wireless ANC Foldable Headset 8550 (Aura Edition) - USB-A,...
4XD1V23301



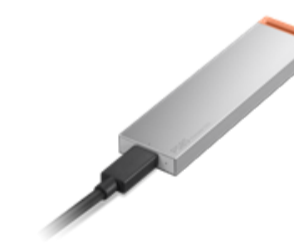
ThinkPad Bluetooth Presenter Mouse (Aura Edition)
4Y51T62792



Lenovo 16" Laptop Everyday Backpack B510
4X41U80414



Lenovo 16-inch Premium Clarity Privacy Filter for ThinkBook 16 Gen 4 (16:10)
4XJ1U03940



Lenovo PS8S Portable SSD 4TB
4XBIT91892



Lenovo 310 FHD Webcam Black
GXC1S15024

>> [View More Accessories](#)

PERFORMANCE**Processor**

Intel Core™ Ultra 5 226V, 8C (4P + 4LPE) / 8T, Max Turbo up to 4.5GHz, 8MB Intel® Smart Cache

AI PC Category

Copilot+ PC^[1]

NPU

Integrated Intel® AI Boost, up to 40 TOPS

Graphics

Integrated Intel® Arc™ Graphics 130V

Chipset

Intel® SoC Platform

Memory

16GB Soldered LPDDR5X-8533, MoP Memory

Memory Slots

Lunar Lake: memory soldered to systemboard, no slots, dual-channel

Max Memory

Lunar Lake: 16GB soldered memory, not upgradable

Storage

512GB SSD M.2 2242 PCIe® 4.0x4 NVMe® Opal 2.0

Storage Slot

Lunar Lake: one M.2 2280 PCIe® 4.0 x4 slot

Max Storage Support

Lunar Lake: one drive, up to 1TB M.2 2280 SSD

Card Reader

No card reader

Audio Chip

High Definition (HD) Audio, Senary SN6147 codec

Speakers

Stereo speakers, 2W x2, Dolby Atmos®, audio by HARMAN

Microphone

2x, Array

Camera

FHD 1080p + IR Hybrid with Privacy Shutter

Battery

48Wh

Power Adapter

65W USB-C® (2-pin)

DESIGN**Display**

16" WUXGA (1920x1200) IPS 300nits Anti-glare, 45% NTSC, 60Hz, Touch^[2]

Touchscreen

In-cell, 10-point Multi-touch

Screen-to-Body Ratio

90.7%

Pen

Pen Not Supported

Keyboard

Backlit, English

Dimensions (WxDxH)^[3]

356 x 249 x 10.1/17.05 (front/rear), 21.15 (maximum) mm; 14.01 x 9.80 x 0.40/0.67 (front/rear), 0.83 (maximum) inches

Weight^[4]

Starting at 1.61 kg (3.55 lbs)

Case Color

Black

Case Material

Aluminium (Top), Aluminium (Bottom)

SOFTWARE**Operating System**

Windows® 11 Pro, English (US) / English (UK)

Bundled Software

None

CONNECTIVITY**WLAN + Bluetooth**

Intel® Wi-Fi® 6E AX211, 802.11ax 2x2 + BT5.3

WWAN

WWAN Not Supported

SIM Card

No physical SIM card inbox

Ethernet

100/1000M (RJ-45)

NFC

No NFC

Standard Ports

- 1x USB-A (USB 5Gbps / USB 3.2 Gen 1)
- 1x USB-A (USB 10Gbps / USB 3.2 Gen 2), Always On
- 1x USB-C® (Thunderbolt™ 4 / USB4® 40Gbps), with USB PD 45-65W and DisplayPort™ 2.1
- 1x HDMI® 2.1, up to 4K/60Hz
- 1x Headphone / microphone combo jack (3.5mm)
- 1x Ethernet (RJ-45)

Optional Ports (configured)

1x USB-C® (Thunderbolt™ 4 / USB4® 40Gbps), with USB PD 45-65W and DisplayPort™ 2.1

Docking

Various docking solutions supported via Thunderbolt™ or USB-C®. For more compatible docking solutions, please visit [Docking for ThinkPad® E16 Gen 3 \(Intel®\)](#)

SECURITY & PRIVACY**ThinkShield**

ThinkShield is a comprehensive security solution that encompasses hardware, software, and supply chain components. For more details, visit [here](#)

Security Chip

Discrete TPM 2.0 Enabled

Physical Locks

Kensington Nano Security Slot™, 2.5 x 6 mm

Smart Card Reader

No Smart Card Reader

Fingerprint Reader

Touch Style, Match-on-Chip, Integrated in Power Button

Other Security

- Camera privacy shutter
- IR camera for Windows® Hello (facial recognition)

MANAGEABILITY**System Management**

Non-vPro®

SERVICE**Base Warranty**

1-year, Courier or Carry-in

Included Upgrade

None

ACCESSORIES**Bundled Accessories**

None

CERTIFICATIONS**Green Certifications**

- ENERGY STAR® 9.0
- EPEAT™ Gold Registered^[5]
- ErP Lot 6/26
- RoHS compliant
- TCO Certified, generation 10

Mil-Spec Test

MIL-STD-810H military test passed

Other Certifications

TÜV Rheinland® Low Blue Light (Software Solution)

MODEL

TopSeller : Yes **EAN / UPC / JAN:** 199274072698

Announce Date: 2026-03-03 **End of Support** : 2032-08-20

- Please refer to the official [Lenovo store website](#) or contact a local Lenovo sales representative or authorized business partner for current inventory and purchase options.
 - Lenovo reserves the right to change specifications without notice.
 - California Electronic Waste Recycling Fee In California, per state law, Lenovo charges an electronic waste recycling fee on this covered device at the time of sale of the product. For more information, go to: <https://www.calrecycle.ca.gov/Electronics/Consumer>
- To see more note information, please access the [web page](#).