



The product images are for illustration purposes only. Actual product appearance, ports, keyboard layout, and accessories may vary by model.

- Intel Core Ultra 5 226V, 8C (4P + 4LPE) / 8T, Max Turbo up to 4.5GHz, 8MB Intel Smart Cache
- 16GB Soldered LPDDR5X-8533, MoP Memory
- 512GB SSD M.2 2242 PCIe 4.0x4 NVMe Opal 2.0
- Integrated Intel Arc Graphics 130V
- Windows 11 Pro, English (US) / English (UK)
- Case color - Black
- 1-year, Courier or Carry-in

**Premier Support** - A direct 24x7x365 line to our most elite technicians.

- Advanced technical support, 24x7x365, in more than 100 markets
- Comprehensive hardware & OEM software support
- Single point of contact for simplified end-to-end case management
- Technical Account Managers for proactive relationship and escalation management
- Priority on service delivery and repair parts
- Lenovo Service Connect Portal for customized reporting and product support

**Accidental Damage Protection** - Protection of your PC from the unexpected.

Experience shows that a significant portion of devices may be damaged (and not covered under warranty) in the first three years. Lenovo's Accidental Damage Protection service covers accidents beyond the system warranty such as drops, spills, bumps and even electrical surges. Make sure your new device has maximum protection, avoid unplanned costs and get peace of mind.

**Base Warranty** - Included with the systems you purchase, default 1- or 3-year coverage window.

**Warranty Extensions & Upgrades** - Service and protection that's right for your circumstances.

- Pick Up & Return Courier
- Onsite Support
- Technician Installed Customer
- Replaceable Unit Service
- International Warranty Upgrade

**Recommended Accessories** United Kingdom



**ThinkPad Dual-Mode Wireless ANC Foldable Headset 8550 (Aura Edition) - USB-A,...**  
4XD1V23301



**ThinkPad Bluetooth Presenter Mouse (Aura Edition)**  
4Y51T62792



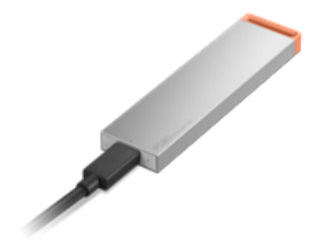
**Lenovo USB 20Gbps USB-C to USB-C Cable 1.5m**  
4X91U92143



**Lenovo 16" Laptop Everyday Backpack B510**  
4X41U80414



**Lenovo 16" Clarity Privacy Filter**  
4XJ1U03940



**Lenovo PS8S Portable SSD 4TB**  
4XB1T91892

>> [View More Accessories](#)

**PERFORMANCE****Processor**

Intel Core™ Ultra 5 226V, 8C (4P + 4LPE) / 8T, Max Turbo up to 4.5GHz, 8MB Intel® Smart Cache

**AI PC Category**

Copilot+ PC<sup>[1]</sup>

**NPU**

Integrated Intel® AI Boost, up to 40 TOPS

**Graphics**

Integrated Intel® Arc™ Graphics 130V

**Chipset**

Intel® SoC Platform

**Memory**

16GB Soldered LPDDR5X-8533, MoP Memory

**Memory Slots**

Lunar Lake: memory soldered to systemboard, no slots, dual-channel

**Max Memory**

Lunar Lake: 16GB soldered memory, not upgradable

**Storage**

512GB SSD M.2 2242 PCIe® 4.0x4 NVMe® Opal 2.0

**Storage Slot**

Lunar Lake: one M.2 2280 PCIe® 4.0 x4 slot

**Max Storage Support**

Lunar Lake: one drive, up to 1TB M.2 2280 SSD

**Card Reader**

No card reader

**Audio Chip**

High Definition (HD) Audio, Senary SN6147 codec

**Speakers**

Stereo speakers, 2W x2, Dolby Atmos®, audio by HARMAN

**Microphone**

2x, Array

**Camera**

FHD 1080p + IR Hybrid with Privacy Shutter

**Battery**

48Wh

**Power Adapter**

65W USB-C® (2-pin)

**DESIGN****Display**

16" WUXGA (1920x1200) IPS 300nits Anti-glare, 45% NTSC, 60Hz<sup>[2]</sup>

**Touchscreen**

None

**Screen-to-Body Ratio**

90.7%

**Pen**

Pen Not Supported

**Keyboard**

Backlit, English

**Dimensions (WxDxH)<sup>[3]</sup>**

356 x 249 x 10.1/17.05 (front/rear), 21.15 (maximum) mm; 14.01 x 9.80 x 0.40/0.67 (front/rear), 0.83 (maximum) inches

**Weight<sup>[4]</sup>**

Starting at 1.61 kg (3.55 lbs)

**Case Color**

Black

**Case Material**

Aluminium (Top), Aluminium (Bottom)

**SOFTWARE****Operating System**

Windows® 11 Pro, English (US) / English (UK)

**Bundled Software**

None

**CONNECTIVITY****WLAN + Bluetooth**

Intel® Wi-Fi® 6E AX211, 802.11ax 2x2 + BT5.3

**WWAN**

WWAN Not Supported

**SIM Card**

No physical SIM card inbox

**Ethernet**

100/1000M (RJ-45)

**NFC**

No NFC

**Standard Ports**

- 1x USB-A (USB 5Gbps / USB 3.2 Gen 1)
- 1x USB-A (USB 10Gbps / USB 3.2 Gen 2), Always On
- 1x USB-C® (Thunderbolt™ 4 / USB4® 40Gbps), with USB PD 45-65W and DisplayPort™ 2.1
- 1x HDMI® 2.1, up to 4K/60Hz
- 1x Headphone / microphone combo jack (3.5mm)
- 1x Ethernet (RJ-45)

**Optional Ports (configured)**

1x USB-C® (Thunderbolt™ 4 / USB4® 40Gbps), with USB PD 45-65W and DisplayPort™ 2.1

**Docking**

Various docking solutions supported via Thunderbolt™ or USB-C®. For more compatible docking solutions, please visit [Docking for ThinkPad® E16 Gen 3 \(Intel®\)](#)

**SECURITY & PRIVACY****ThinkShield**

ThinkShield is a comprehensive security solution that encompasses hardware, software, and supply chain components. For more details, visit [here](#)

**Security Chip**

Discrete TPM 2.0 Enabled

**Physical Locks**

Kensington Nano Security Slot™, 2.5 x 6 mm

**Smart Card Reader**

No Smart Card Reader

**Fingerprint Reader**

Touch Style, Match-on-Chip, Integrated in Power Button

**Other Security**

- Camera privacy shutter
- IR camera for Windows® Hello (facial recognition)

**MANAGEABILITY****System Management**

Non-vPro®

**SERVICE****Base Warranty**

1-year, Courier or Carry-in

**Included Upgrade**

None

**ACCESSORIES****Bundled Accessories**

None

**CERTIFICATIONS****Green Certifications**

- ENERGY STAR® 9.0
- EPEAT™ Gold Registered<sup>[5]</sup>
- ErP Lot 6/26
- RoHS compliant
- TCO Certified, generation 10

**Mil-Spec Test**

MIL-STD-810H military test passed

**Other Certifications**

TÜV Rheinland® Low Blue Light (Software Solution)

**MODEL**

**TopSeller** : Yes **EAN / UPC / JAN:** 199274072780  
**Announce Date:** 2026-03-03 **End of Support** : 2032-08-20

- Please refer to the official [Lenovo store website](#) or contact a local Lenovo sales representative or authorized business partner for current inventory and purchase options.
- Lenovo reserves the right to change specifications without notice.
- California Electronic Waste Recycling Fee In California, per state law, Lenovo charges an electronic waste recycling fee on this covered device at the time of sale of the product. For more information, go to: <https://www.calrecycle.ca.gov/Electronics/Consumer>
- To see more note information, please access the [web page](#).