

**IFP INTERACTIVE DISPLAYS****INFORMATION**

## 65" Google EDLA Certified IFP - Interactive display for seamless integration and collaboration in education and enterprise



The TE6513A-B2AG is a cutting-edge 4K UHD Google EDLA Certified interactive display that redefines performance and precision. Featuring a Zero-Gap Air Bonding LCD screen to eliminate parallax and with PureTouch-IR+ with Palm Rejection, it ensures smooth, accurate interaction.

Powered by iiWare 21E with Android 14-EDLA, WiFi-6E with Bluetooth 5.0 connectivity, [iiControl](#) (DMS), [iiShare](#) and integrated [EShare](#) app (wireless screen sharing), it integrates seamlessly into your ecosystem.

Enjoy added features like a PIR motion sensor for energy efficiency; perfect for workplaces and educational spaces, it fosters collaboration, communication, and progress.



## Google EDLA Certified

Google Enterprise Device License Agreement allows Google apps, accounts, files, and collaborative tools to be easily accessed directly from the Google EDLA certified iiyama displays, offering seamless integration with the Google ecosystem and the entire Microsoft 365 suite for enhanced user experience, productivity, and collaboration in all environments, especially the education and enterprise sectors alike.



## iiWare 21E (Android 14 OS)

Empower your presentations with iiWare 21E, featuring Google EDLA, iiControl (DMS), iiShare (Wireless Presentation), WhiteBoard, Cloud Drives, iiBrowser and file manager via an intuitive and user-friendly software that allows you to effortlessly manage, customize, and access various applications with ease.



## Quick Radial Menu

This feature provides a quick way to operate the interactive display. Long press with five fingers to bring up the Quick Radial Menu. Users can directly select the frequently used apps in the apps menu and place them in the Quick Radial Menu.



## iiControl - Device Management System

iiControl provides organizations with a convenient and fast unified management solution for terminal equipment, builds an efficient and real-time equipment management system, helps digitize the campus/office estate environment and makes device management ultra convenient. iiControl DMS is committed to maintaining compliance with GDPR.

## SPECIFICATION

### 01 DISPLAY CHARACTERISTICS

<b>Design</b>	Thin bezel
<b>Diagonal</b>	64.5", 163.9cm
<b>Panel</b>	IPS
<b>Touch Glass</b>	Anti-Glare glass with Anti-Gloss treatment, Anti-Bacterial coating, Ultra Smooth writing, Zero-Gap Air Bonding
<b>Native resolution</b>	3840 x 2160 (8.3 megapixel 4K UHD)
<b>Aspect ratio</b>	16:9
<b>Panel brightness</b>	500 cd/m <sup>2</sup>
<b>Brightness</b>	500 cd/m <sup>2</sup> (max.)
<b>Light transmittance</b>	88%
<b>Static contrast</b>	1200:1
<b>Response time (GTG)</b>	8ms
<b>Viewing zone</b>	horizontal/vertical: 178°/178°, right/left: 89°/89°, up/down: 89°/89°
<b>Colour support</b>	1.07B 10bit (8bit + Hi-FRC) (NTSC 72%)
<b>Horizontal Sync</b>	30 - 135kHz
<b>Viewable area W x H</b>	1428.5 x 803.5mm, 56.2 x 31.6"
<b>Bezel width (sides, top, bottom)</b>	16.5mm, 16.5mm, 41mm
<b>Pixel pitch</b>	0.372mm
<b>Bezel colour and finish</b>	black, matte

### 02 TOUCH

<b>Touch technology</b>	PureTouch-IR <sup>+</sup>
<b>Touch points</b>	40, 10pt writing (HID, only with supported OS, 32pt Touch with Android)
<b>Scan rate</b>	200Hz
<b>Touch response time</b>	5ms
<b>Touch accuracy</b>	+/- 1mm
<b>Touch method</b>	stylus, finger, glove (Passive pen, Opaque objects)
<b>Touch interface</b>	USB
<b>Supported operating systems</b>	All iiyama monitors are Plug & Play and compatible with Windows and Linux. For details regarding the supported OS for the touch models, please refer to the driver instruction file available in the downloads section.
<b>Palm rejection</b>	yes

### 03 INTERFACES / CONNECTORS / CONTROLS

<b>Digital signal input</b>	HDMI x2 (v2.0) (H1 CEC/ARC / H2 CEC) DisplayPort x1 (v1.2) USB-C x2 ((DP-Alt, Data, Touch) front 100W PD, side 65W PD)
<b>Audio input</b>	Mini jack x1 (Microphone)

<b>Monitor control input</b>	RS-232c x1 (DSUB 9pin)
<b>Digital signal output</b>	HDMI x1 (2.0, max. 3840x2160 @60Hz, YUV444 / RGB444) USB-C x1 (2.0, max. 3840x2160 @60Hz, YUV444 / RGB444, DP1 Alt Mode, USB-C X1 (3.2 Gen 1, 5 Gbps))
<b>Audio output</b>	S/PDIF (Optical) x1 Mini jack x1 (Headphone) Speakers 2 x 20W (Front facing + 20W Subwoofer on the backside)
<b>Monitor control output</b>	OPS Slot x1 (Intel OPS 80pin - When installed: USB-C front: 65W, side: 15W)
<b>HDCP</b>	2.2
<b>USB ports</b>	x6 (media playback / peripherals / storage – front side: 1x USB-C 3.2 (Gen 1, 5Gbit, 100W PD), 2x 3.2 (Gen 1, 5Gbit), side: 1x USB-C 2.0 (480 Mbps, 65W PD), 1x 2.0 (480Mbps), 1x 3.2 (Gen 1, 5Gbit))
<b>RJ45 (LAN)</b>	x2 (IN / OUT, Auto switch for PC & Android, 1000MB)

## 04 FEATURES

<b>Integrated software</b>	iiWare 21E (Android 14 OS, Android 16 summer 2026) featuring Google EDLA, iiControl (DMS), WhiteBoard, web browser, file manager, cloud drives and iiShare for wireless connection with Windows/iOS/Android devices
<b>WiFi</b>	yes (WiFi-6E, Bluetooth 5.0)
<b>Hardware</b>	SOC: RK3576 Octo-core A72*4 + A35*4, GPU: Mali G52 MC3, RAM: 8GB, ROM: 128 GB
<b>Extra</b>	Ambiant light Sensor, Pen Pick-up Sensor, PIR Motion Sensor, NFC, Slot for optional OPS PC, 4x Touch pen
<b>Max. non-stop operating time</b>	24/7 (While the components are rated for 24/7 operation, we recommend usage not exceeding 18 hours per day to ensure optimal product longevity)
<b>Media playback</b>	yes
<b>Glass thickness</b>	3.2mm
<b>Glass hardness</b>	7H
<b>Housing (bezel)</b>	metal
<b>OSD key lock</b>	yes

## 05 GENERAL

<b>OSD languages</b>	EN, DE, FR, ES, IT, RU, CZ, NL, PL, SV, FI, DA, NB, ET, LV, HU, UK
<b>Control buttons</b>	Power, Home, Freeze, Volume, Input (source)
<b>User controls</b>	general settings (input, volume, backlight), audio (volume, bass, treble, balance, sound mode, mute), screen settings (aspect ratio, pixel shift), display settings (brightness, contrast, hue, sharpness, display mode colour temp), settings (wireless & networks, share, device, personal, system)
<b>Blue light reducer</b>	yes
<b>Flicker free</b>	98" not supported
<b>Plug&amp;Play</b>	DDC2B
<b>Warranty</b>	5 years (for details and eligible countries please check the Warranty section of our website)

## 06 MECHANICAL

**Orientation** landscape

<b>Fanless design</b>	yes
<b>VESA mounting</b>	600 x 400mm
<b>Operation temperature range</b>	0°C - 40°C
<b>Storage temperature range</b>	- 20°C - 60°C
<b>MTBF</b>	50.000 hours (excluding backlight)

## 07 ACCESSORIES INCLUDED

<b>Cables</b>	power (EU 3m, UK 3m), USB (3m), HDMI (3m)
<b>Touch pen</b>	x4 (Dual function tips)
<b>Guides</b>	quick start guide, safety guide
<b>Other</b>	Wall Mounting Bracket (VESA 600x400), Webcam Mounting Bracket
<b>Remote control</b>	yes (batteries included)

## 08 POWER MANAGEMENT

<b>Power supply unit</b>	internal
<b>Power supply</b>	AC 100 - 240V, 50/60Hz
<b>Power usage</b>	182W typical, 0.5W stand by, 0.3W off mode

## 09 SUSTAINABILITY

<b>Regulations</b>	CB, CE, TÜV-Bauart, EAC, RoHS support, ErP, WEEE, REACH (RoHS)
<b>Energy efficiency class (Regulation (EU) 2017/1369)</b>	G
<b>REACH SVHC</b>	above 0.1%: Lead

## 10 DIMENSIONS / WEIGHT

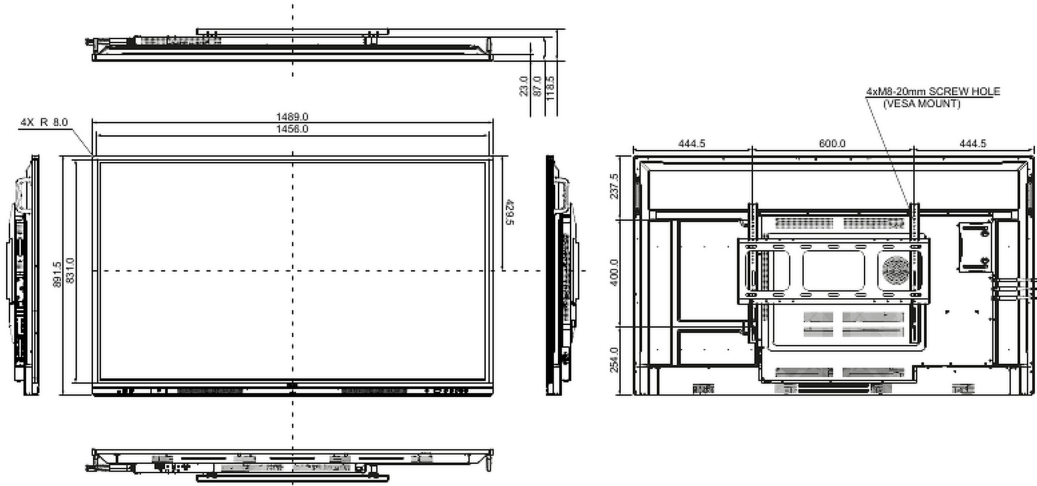
<b>Product dimensions W x H x D</b>	1489 x 891.5 x 87mm
<b>Box dimensions W x H x D</b>	1640 x 1010 x 185mm
<b>Pallet volume</b>	4pcs
<b>Weight (without box)</b>	39.4kg
<b>Weight (with box)</b>	48.5kg
<b>EAN code</b>	4948570125739

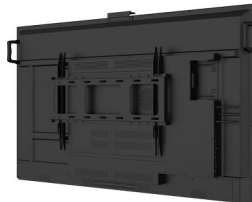
## 11 COMPATIBLE ACCESSORIES

**Other** OPC51204BC-1 (OPS Slot PC), MD-CAR2031-B1, MD-WLIFT2031-W1, MD-CART02-S1, UC CAM120ULB-1, UC-CAM10PRO-1, WP-D003C

## 12 EU ENERGY EFFICIENCY LABEL

Manufacturer	iiyama
Visible screen diagonal	164cm; 85.6"; (%3" segment)
ON mode power consumption	144W
Annual energy consumption	144kWh/annum*
Power in OFF Mode	0.5W off mode





**TE INTERACTIVE SERIES** *iiyama*  
TOUCH PENS WITH DUAL FUNCTION TIPS AND ANTI-BACTERIAL COATING



x4

**TE INTERACTIVE SERIES** *iiyama*  
MOUNTING BRACKET FOR WEBCAM



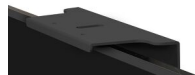
**TE INTERACTIVE SERIES** *iiyama*  
MOUNTING BRACKET FOR WEBCAM



**TE INTERACTIVE SERIES** *iiyama*  
MOUNTING BRACKET FOR WEBCAM



**TE INTERACTIVE SERIES** *iiyama*  
MOUNTING BRACKET FOR WEBCAM



All trademarks and registered trademarks acknowledged. E & O E. Specification subject to change without notice. All LCD's comply with ISO-9241-307:2008 in connection with pixel defects. © IYAMA CORPORATION. ALL RIGHTS RESERVED