

## PERFORMANCE

### Processor

Intel Core™ i5-14500T, 14C (6P + 8E) / 20T, P-core 1.7 / 4.8GHz, E-core 1.2 / 3.4GHz, 24MB Intel® Smart Cache

### AI PC Category

AI PC<sup>[1]</sup>

### NPU

None

### Graphics<sup>[2]</sup>

NVIDIA GeForce RTX™ 4060 8GB GDDR6

### Chipset

Intel® Q670 Chipset

### Memory

1x 16GB SODIMM DDR5-4800

### Memory Slots

Two DDR5 SODIMM slots, dual-channel capable

### Max Memory<sup>[3]</sup>

Up to 64GB DDR5-5200

### Storage

512GB SSD M.2 2280 PCIe® 4.0x4 NVMe® Opal 2.0

### Max Storage Support<sup>[4]</sup>

Dual SSD mode: up to two drives, 2x M.2 SSD • M.2 2280 SSD up to 2TB

### RAID Preset

None

### Card Reader

No card reader

### Optical

None

### Audio Chip

High Definition (HD) Audio

### Speakers

2Wx1

### Power Supply

350W 92%

## DESIGN

### Keyboard

USB Calliope Keyboard, Black, German

### Mouse

USB Calliope Mouse, Black

### Expansion Slots

Four M.2 slots (one for WLAN, one for AI Card, two for SSD)

### Case Color

Luna Grey

### Pen

Pen Not Supported

### Form Factor

Tiny (3.6L)

### Dimensions (WxDxH)<sup>[5]</sup>

195 x 191 x 108 mm (7.68 x 7.52 x 4.25 inches)

### Weight<sup>[6]</sup>

Around 3.5 kg (7.72 lbs)

## CONNECTIVITY

### WLAN + Bluetooth

Intel® Wi-Fi® 6E AX211, 802.11ax 2x2 + BT5.3, vPro<sup>[7]</sup>

### WWAN

WWAN Not Supported

### Ethernet

Integrated 100/1000M

### Front Ports

- 1x USB-C® (USB 20Gbps / USB 3.2 Gen 2x2), data transfer only
- 2x USB-A (USB 10Gbps / USB 3.2 Gen 2), one supports 5V@2.1A charging
- 1x headphone / microphone combo jack (3.5mm)

### Rear Ports<sup>[8]</sup>

- 2x USB-A (USB 10Gbps / USB 3.2 Gen 2)
- 2x USB-A (USB 5Gbps / USB 3.2 Gen 1)
- 1x HDMI® 2.1 TMDS
- 1x HDMI® 2.1a FRL
- 4x DisplayPort™ 1.4a
- 1x Ethernet (GbE RJ-45)

### Optional Rear Ports (configured)

1x HDMI® 2.1a FRL, 3x DP 1.4a (HBR3, DSC) on NVIDIA GeForce RTX™ 4060

## SECURITY & PRIVACY

### Security Chip

Firmware TPM 2.0 integrated in chipset

### Fingerprint Reader

No fingerprint reader

### Physical Locks

Kensington Security Slot™

## MANAGEABILITY

### System Management<sup>[9]</sup>

Intel® vPro® Enterprise

## SERVICE

### Base Warranty

1-year, Courier or Carry-in

### Included Upgrade

1Y Onsite from 1Y Depot WHB (CPN)

## CERTIFICATIONS

### Green Certifications

- ENERGY STAR® 8.0
- ErP Lot 3
- GREENGUARD®
- RoHS compliant
- TCO Certified

## SOFTWARE

### Operating System

Windows® 11 Pro, German

### Bundled Software

None

## ACCESSORIES

### Bundled Accessories

None

## MODEL

TopSeller : Yes EAN / UPC / JAN: 0199273188086

Announce Date: 2025-10-06 End of Support : 2031-01-29

Note:

- [1] AI PCs have a NPU capable of 10+ TOPs to run the Copilot assistant by pressing the optional Microsoft Copilot key or using Win + C.
- [2] The information of integrated graphics are not applicable for the models with processor which has no integrated graphics inside (for the details, please refer to processor section).
- [3] The max memory is based on the test results with current Lenovo memory offerings.
- [4] The max capacity of each disk type is based on the test results with current Lenovo storage offerings.
- [5] The system dimensions may vary depending on configurations.
- [6] The system weight is approximate and based on results in Lenovo lab, which varies depending on the source of component, variance of the distribution of each component, and manufacturing process. It may not be the exact weight for each specific model.
- [7] Intel vPro platform requires the hardware and software necessary to deliver the manageability use cases, security features, system performance, and stability that define the platform. For detailed vPro support information, please refer to the System Management section.
- [8] For video ports on discrete graphics, please see [graphics section](#)
- [9] Intel vPro offers a superset of DASH's defined capabilities.
- Please refer to the official [Lenovo store website](#) or contact a local Lenovo sales representative or authorized business partner for current inventory and purchase options.
- Lenovo reserves the right to change specifications without notice.

## Premier Support - A direct 24x7x365 line to our most elite technicians.



Advanced technical support, 24x7x365, in more than 100 markets



Technical Account Managers for proactive relationship and escalation management



Comprehensive hardware & OEM software support



Priority on service delivery and repair parts



Single point of contact for simplified end-to-end case management



Lenovo Service Connect Portal for customized reporting and product support

## Accidental Damage Protection - Protection of your PC from the unexpected.

Experience shows that a significant portion of devices may be damaged (and not covered under warranty) in the first three years. Lenovo's Accidental Damage Protection service covers accidents beyond the system warranty such as drops, spills, bumps and even electrical surges. Make sure your new device has maximum protection, avoid unplanned costs and get peace of mind.

## Base Warranty - Included with the systems you purchase, default 1- or 3-year coverage window.

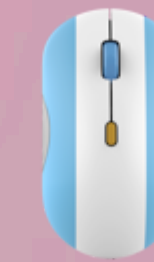
## Warranty Extensions & Upgrades - Service and protection that's right for your circumstances.

- Pick Up & Return Courier
- Onsite Support
- Technician Installed Customer
- Replaceable Unit Service
- International Warranty Upgrade

Lenovo may not offer the products, services or features discussed in this document in all regions. Lenovo may withdraw an offering at any time. Information is subject to change without notice. Consult your local representative for information on offerings available in your area. Lenovo reserves the right to change specifications or other product information without notice. Lenovo is not responsible for photographic or typographical errors. Lenovo provides this publication "as is" without warranty of any kind, either express or implied, including the implied warranties of merchantability or fitness for a particular purpose.

## Recommended Accessories

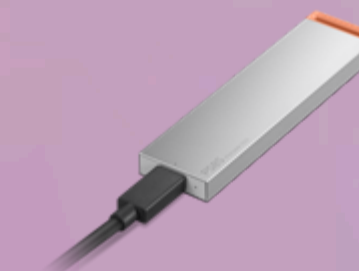
 United Kingdom



Lenovo 350 Bluetooth Silent Mouse (Fan Edition - Argentina) GY51U71763



Lenovo Analog In-Ear Headphones Gen II Bulk Package (20pcs) 4XD1T54899



Lenovo PS8S Portable SSD 4TB 4XB1T91892

Please click [here](#) to view the full list of accessories.

**Lenovo**

PSREF

Product Specifications Reference