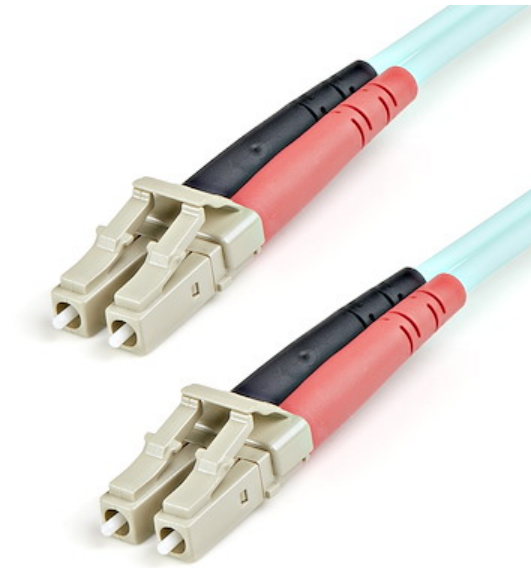


1m (3ft) LC/UPC to LC/UPC OM3 Multimode Fiber Optic Cable, Full Duplex 50/125m Zipcord Fiber Cable, 100G, Low Insertion Loss, LSZH Fiber Jumper Cord

Product ID: A50FBLCLC1



The A50FBLCLC1 1m 850nm Laser-Optimized Multimode Fiber (LOMMF) Aqua Cord features 50/125 micron fiber for high-speed, high bandwidth data transmissions over 10 Gigabit Ethernet and Fiber Channel networks - the perfect solution for fiber cable runs between multiple backbone switches, hubs and routers as well as higher end networking equipment.

This LC-LC patch cable is housed in a LSZH (Low-Smoke, Zero-Halogen) flame retardant jacket, to ensure minimal smoke, toxicity and corrosion when exposed to high sources of heat, in the event of a fire – an ideal solution for use in industrial settings, central offices and schools, as well as residential settings where building codes are a consideration.

Each Duplex 50/125 (OM3) Multimode Fiber Patch Cable is individually tested and certified to be within acceptable optical insertion loss limits for guaranteed compatibility and 100% reliability, and is backed by our lifetime warranty.

Certifications, Reports and Compatibility



Applications

- Use in 10 Gigabit High Speed Network Environments
- Ideal solution for data applications requiring high speed data transmission
- Broadband systems

- Telecommunication/Data communication
- Fiber Connections in Patch Panels, Hubs, Switches, Routers

Features

- **OM3 FIBER CABLE:** OM3 Laser-Optimized Multimode Fiber Cable delivers up to 100 Gbps Ethernet; Full-duplex zip-cord with color-coded TX/RX connectors for cabling servers and Storage Area Networks (SANs)
- **QUALITY CONSTRUCTION:** 50/125m fiber core/cladding is immune to EMI; Protective Aramid fiber sheath for improved tensile strength and crush resistance; LC/LC connectors with UPC polished ceramic ferrules for insertion loss below 0.3dB
- **RATINGS AND RELIABILITY:** Individually tested for signal integrity; LSZH jacket emits low-smoke and fumes in case of fire; TIA/EIA compliant fiber core; Attenuation value under 2.3dB/km meets or exceeds industry standards
- **WIDE COMPATIBILITY:** OM3 LC/LC multimode cable supports 1/10/40/100 Gbps networks; Backward compatible with OM3; For high-density network applications such as SANs, data servers, fiber switches, SFP+, QSFP+, and QSFP28 transceivers
- **SPECS:** 1m (3.3ft); Color: Aqua (OM3); LC/LC UPC; 850nm or 1300nm LED/VCSEL; Modal Bandwidth: 2000MHz·km at 850nm; Cable OD: 2.9mm; Bend Radius: Static 1.2in (3cm), Dynamic 2.4in (6cm); Backed for Life

Hardware

Warranty	Lifetime
Fiber Size	50/125
Cable Jacket Material	Low Smoke Zero Halogen
Fire Rating	LSZH Rated (Low Smoke Zero Halogen)
Fiber Classification	OM3

Performance

Maximum Data Transfer Rate	100Gbps
Cable Rating	1Gbps / 10Gbps / 40Gbps / 100Gbps
Type	Multi Mode
Wavelength	850nm

Connector(s)

Connector A	1 - Fiber Optic LC Duplex
Connector B	1 - Fiber Optic LC Duplex

Environmental

Operating Temperature	-20C to 60C (-4F to 140F)
Storage Temperature	-20C to 60C (-4F to 140F)
Humidity	0~90% RH

Physical Characteristics

Color	Aqua
Cable Length	3.3 ft [1 m]
Cable OD	0.1 in [3 mm]
Product Length	3.3 ft [1.0 m]
Product Width	0.6 in [1.5 cm]
Product Height	0.4 in [1.1 cm]
Weight of Product	0.5 oz [15.0 g]

Packaging Information

Package Quantity	1
Package Length	8.0 in [20.3 cm]
Package Width	7.8 in [19.7 cm]
Package Height	0.6 in [1.6 cm]
Shipping (Package) Weight	0.1 oz [2.0 g]

What's in the Box

Included in Package	1 - 1m 10Gb Aqua Multimode 50/125 Duplex LSZH Fiber Patch Cable LC - LC
---------------------	---

Warranty Information

Warranty	Lifetime
----------	----------

**Product appearance and specifications are subject to change without notice.*