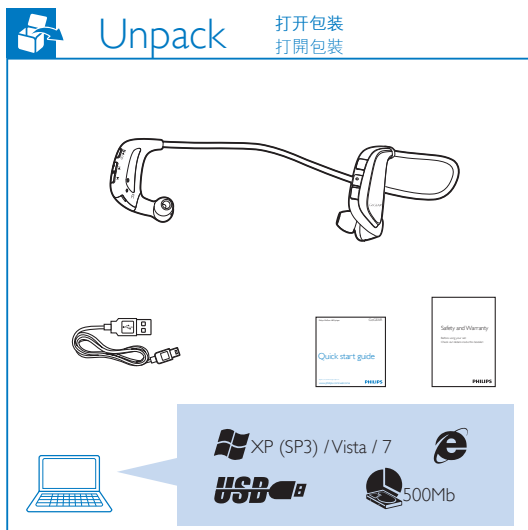


Quick start guide
快速入门指南
快速入門指南

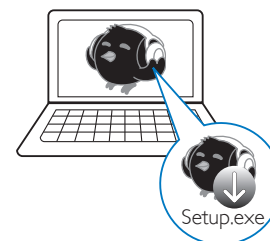
Quick start guide

Register your product and get support at
www.philips.com/welcome



1 Install Philips Songbird

安装
安裝



To get the latest Philips Songbird and user manuals, download from www.philips.com/Songbird and www.philips.com/support.
要获取最新的 Philips Songbird 和用户手册，可从 www.philips.com/Songbird 和 www.philips.com/support 网站下载。
要取得最新 Philips Songbird 及用戶手冊，請於 www.philips.com/Songbird 及 www.philips.com/support 下載。

About the water-resistance specifications of ACTION

The water-resistance specifications of the player meets the Ingress Protection Rating (IP Code) IPX5 of IEC60529:

- The test for compliance with IPX5 is conducted for each surface of the enclosure of the player, except for the headphone sections and when the USB cover of the player is closed properly;
- The player can work normally when it is subject to water that jets from a nozzle with an opening of 6.3-mm diameter, at a flow rate of 12.5 liters per minute, for a duration of more than three minutes, and from a distance of about three meters.

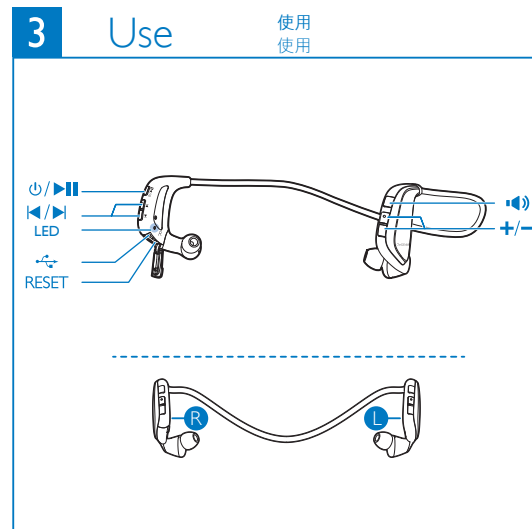
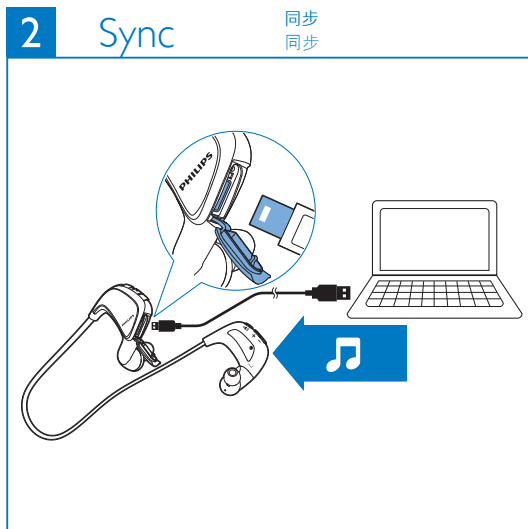
关于本播放器的防水规格

本播放器的防水规格达到IEC60529防护等级IPX5:

- 该IPX5防护等级测试涉及本播放器外壳的各个侧面，但不包括耳机部分且测试在USB盖完全闭合时进行；
- 本播放器受到如下水流喷射时仍能正常工作：水流来自内直径 6.3 mm 的喷水口；水流量每分钟12.5升，水喷射时间至少3分钟，且喷射距离约3米。



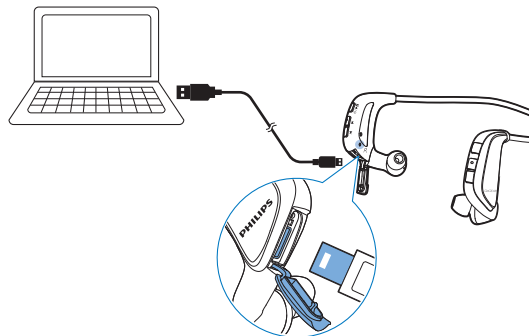
Specifications are subject to change without notice.
© 2012 Koninklijke Philips Electronics N.V.
All rights reserved.
SA4Action_93_QSG_V1.0
wk1213.2





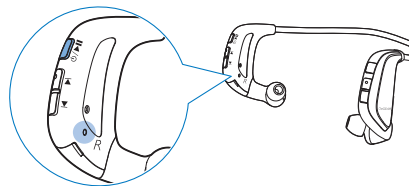
Charge

充电
充电



Red light: Power charging ongoing
Blue light: Power charging complete
红色指示灯: 正在充电
蓝色指示灯: 充电完成

紅燈: 充電進行中
藍燈: 充電完成



Press and hold until the indicator lights up. Blue light: Power on. Red light: Power off | 按住直到指示灯亮起。蓝色指示灯: 开启。红色指示灯: 关闭 | 按住直至指示灯亮起。藍燈: 開啟。紅燈: 關閉



Press to pause/ resume play. | 按下以暫停/繼續播放。| 按鍵以暫停/恢復播放。



Press to select the previous/ next song. To switch random play on or off, press and hold the two buttons together. You hear the voice feedback.

按下以选择上一首/下一首歌曲。如需打开或关闭随机播放, 同时按住两个按键。你可听到语音提示。

按鍵以選擇前一首/下一首曲目。如需開啟或關閉隨機播放, 同時按住兩個按鍵。你可聽到語音提示。



Press to increase/ decrease the volume. To switch FullSound on or off, press and hold the two buttons together. You hear the voice feedback.

按下以增大/减小音量。如需打开或关闭飞声功能, 同时按住两个按键。你可听到语音提示。

按鍵以增大/减小音量。如需開啟或關閉FullSound, 同時按住兩個按鍵。你可聽到語音提示。



Press to check the battery level. Press and hold to switch the workout mode on or off. When the workout mode is on, press to check your workout information.

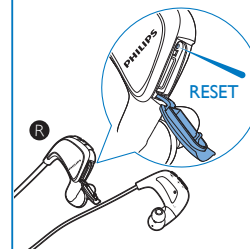
按下以获取电池电量信息。按住以打开或关闭锻炼跟踪模式。当锻炼跟踪模式打开时, 按下以获取锻炼状态信息。

按鍵以獲取電池電量信息。按住以開啟或關閉運動跟蹤模式。當運動跟蹤模式開啟時, 按鍵以獲取運動狀態信息。



Help

帮助
說明



Device does not respond to the pressing of keys

本机对按键操作无反应
裝置對按键操作沒有響應

Go to www.philips.com/support for support information.

有关支持信息, 请转到 www.philips.com/support。

請到 www.philips.com/support 獲取有關支持信息。